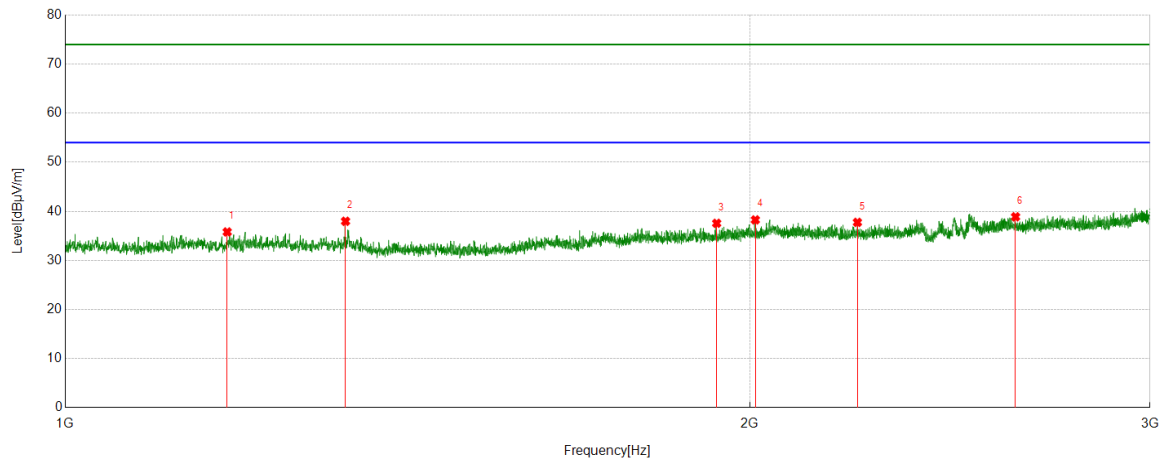




Test Mode	Channel	Polarization	Verdict
11B	HCH	Vertical	PASS



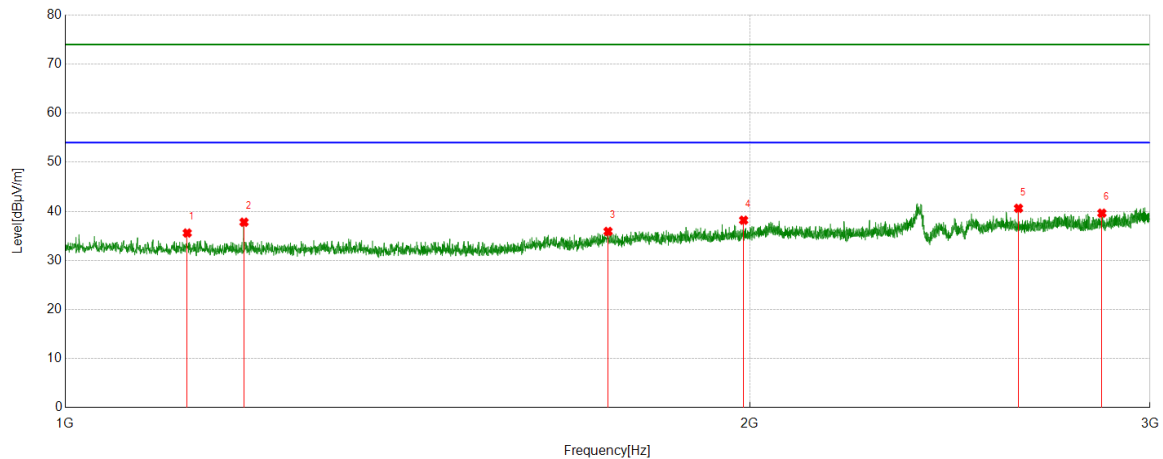
PK Result:

No.	Frequency	Reading Level	Correct Factor	Result	Limit	Margin	Remark
	[MHz]	[dBuV/m]	[dB]	[dBuV/m]	[dBuV/m]	[dB]	
1	1178.2723	41.96	-6.16	35.80	74.00	-38.20	Vertical
2	1328.291	44.38	-6.41	37.97	74.00	-36.03	Vertical
3	1934.3668	40.97	-3.41	37.56	74.00	-36.44	Vertical
4	2011.6265	41.20	-2.94	38.26	74.00	-35.74	Vertical
5	2230.6538	40.94	-3.19	37.75	74.00	-36.25	Vertical
6	2618.2023	40.40	-1.52	38.88	74.00	-35.12	Vertical

- Note: 1. Measurement = Reading Level + Correct Factor.
2. If Peak Result complies with AV limit, AV Result is deemed to comply with AV limit.
3. Test setup: RBW: 1 MHz, VBW: 3 MHz, Sweep time: auto.
4. Peak: Peak detector.
5. For below 3GHz part, filter losses were only considered in the spurious frequency bands and the authorized band was not corrected for Band Reject Filter losses.
6. Only the worst case emission was recorded, if it complies with the limit, the other emissions deemed to comply with the limit.



Test Mode	Channel	Polarization	Verdict
11G	LCH	Horizontal	PASS



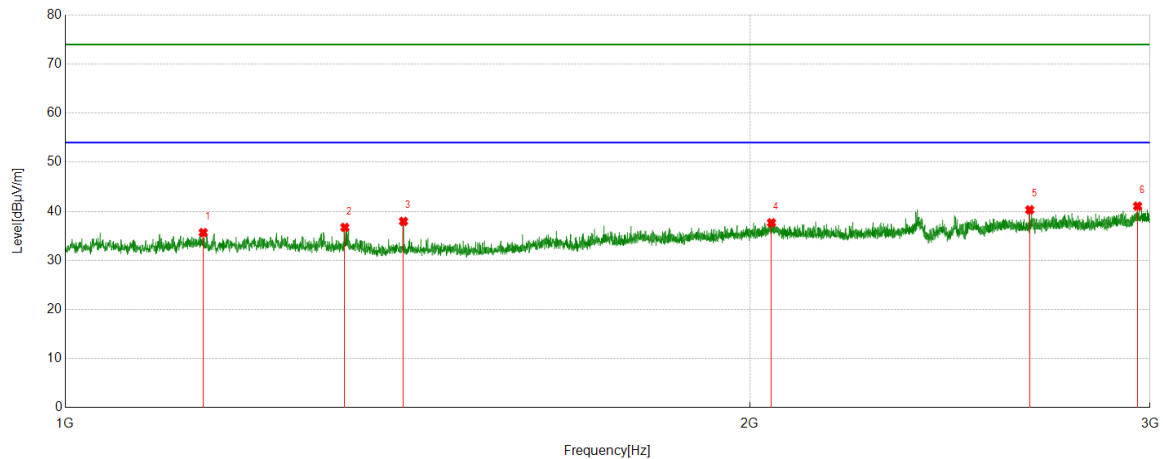
PK Result:

No.	Frequency	Reading Level	Correct Factor	Result	Limit	Margin	Remark
	[MHz]	[dBuV/m]	[dB]	[dBuV/m]	[dBuV/m]	[dB]	
1	1131.5164	41.63	-6.05	35.58	74.00	-38.42	Horizontal
2	1198.5248	44.46	-6.67	37.79	74.00	-36.21	Horizontal
3	1732.8416	40.61	-4.71	35.90	74.00	-38.10	Horizontal
4	1987.8735	41.42	-3.23	38.19	74.00	-35.81	Horizontal
5	2625.9532	42.25	-1.64	40.61	74.00	-33.39	Horizontal
6	2857.4822	40.75	-1.13	39.62	74.00	-34.38	Horizontal

- Note: 1. Measurement = Reading Level + Correct Factor.
2. If Peak Result complies with AV limit, AV Result is deemed to comply with AV limit.
3. Test setup: RBW: 1 MHz, VBW: 3 MHz, Sweep time: auto.
4. Peak: Peak detector.
5. For below 3GHz part, filter losses were only considered in the spurious frequency bands and the authorized band was not corrected for Band Reject Filter losses.
6. Only the worst case emission was recorded, if it complies with the limit, the other emissions deemed to comply with the limit.



Test Mode	Channel	Polarization	Verdict
11G	LCH	Vertical	PASS



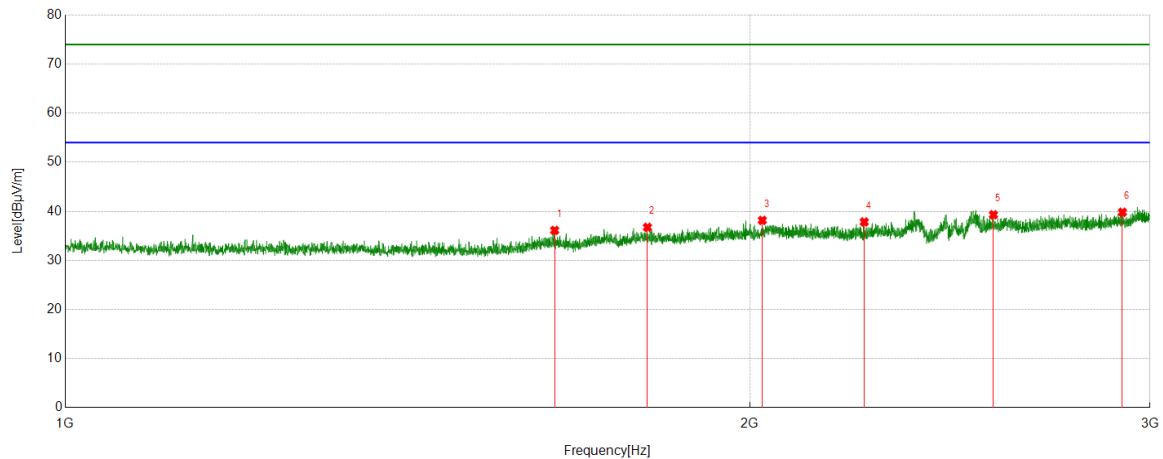
PK Result:

No.	Frequency	Reading Level	Correct Factor	Result	Limit	Margin	Remark
	[MHz]	[dBuV/m]	[dB]	[dBuV/m]	[dBuV/m]	[dB]	
1	1150.0188	41.73	-6.06	35.67	74.00	-38.33	Vertical
2	1327.2909	43.13	-6.40	36.73	74.00	-37.27	Vertical
3	1408.5511	44.57	-6.62	37.95	74.00	-36.05	Vertical
4	2044.6306	40.17	-2.50	37.67	74.00	-36.33	Vertical
5	2655.957	42.16	-1.86	40.30	74.00	-33.70	Vertical
6	2962.4953	40.72	0.33	41.05	74.00	-32.95	Vertical

- Note: 1. Measurement = Reading Level + Correct Factor.
2. If Peak Result complies with AV limit, AV Result is deemed to comply with AV limit.
3. Test setup: RBW: 1 MHz, VBW: 3 MHz, Sweep time: auto.
4. Peak: Peak detector.
5. For below 3GHz part, filter losses were only considered in the spurious frequency bands and the authorized band was not corrected for Band Reject Filter losses.
6. Only the worst case emission was recorded, if it complies with the limit, the other emissions deemed to comply with the limit.



Test Mode	Channel	Polarization	Verdict
11G	MCH	Horizontal	PASS



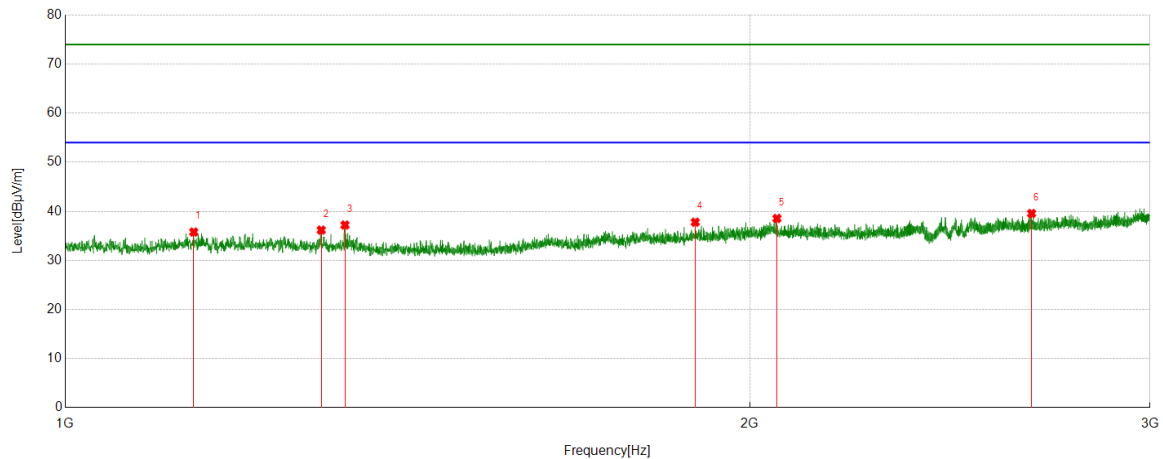
PK Result:

No.	Frequency	Reading Level	Correct Factor	Result	Limit	Margin	Remark
	[MHz]	[dBuV/m]	[dB]	[dBuV/m]	[dBuV/m]	[dB]	
1	1641.5802	41.43	-5.31	36.12	74.00	-37.88	Horizontal
2	1803.3504	41.02	-4.27	36.75	74.00	-37.25	Horizontal
3	2025.8782	41.03	-2.87	38.16	74.00	-35.84	Horizontal
4	2246.1558	41.10	-3.26	37.84	74.00	-36.16	Horizontal
5	2560.195	41.59	-2.28	39.31	74.00	-34.69	Horizontal
6	2917.4897	40.34	-0.53	39.81	74.00	-34.19	Horizontal

- Note: 1. Measurement = Reading Level + Correct Factor.
2. If Peak Result complies with AV limit, AV Result is deemed to comply with AV limit.
3. Test setup: RBW: 1 MHz, VBW: 3 MHz, Sweep time: auto.
4. Peak: Peak detector.
5. For below 3GHz part, filter losses were only considered in the spurious frequency bands and the authorized band was not corrected for Band Reject Filter losses.
6. Only the worst case emission was recorded, if it complies with the limit, the other emissions deemed to comply with the limit.



Test Mode	Channel	Polarization	Verdict
11G	MCH	Vertical	PASS



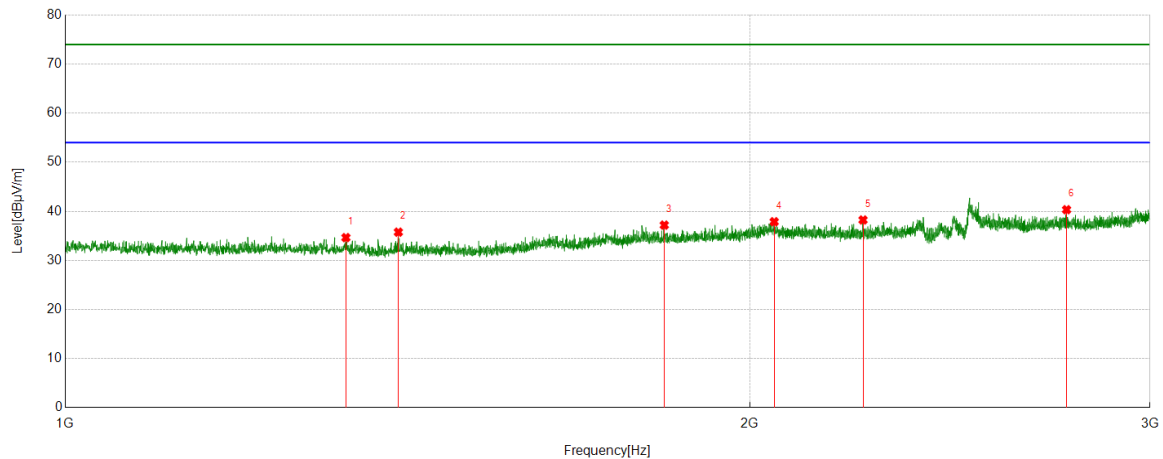
PK Result:

No.	Frequency	Reading Level	Correct Factor	Result	Limit	Margin	Remark
	[MHz]	[dBuV/m]	[dB]	[dBuV/m]	[dBuV/m]	[dB]	
1	1139.0174	41.84	-6.06	35.78	74.00	-38.22	Vertical
2	1296.037	42.43	-6.25	36.18	74.00	-37.82	Vertical
3	1327.5409	43.61	-6.40	37.21	74.00	-36.79	Vertical
4	1892.8616	41.60	-3.82	37.78	74.00	-36.22	Vertical
5	2056.132	41.26	-2.71	38.55	74.00	-35.45	Vertical
6	2660.9576	41.39	-1.83	39.56	74.00	-34.44	Vertical

- Note: 1. Measurement = Reading Level + Correct Factor.
2. If Peak Result complies with AV limit, AV Result is deemed to comply with AV limit.
3. Test setup: RBW: 1 MHz, VBW: 3 MHz, Sweep time: auto.
4. Peak: Peak detector.
5. For below 3GHz part, filter losses were only considered in the spurious frequency bands and the authorized band was not corrected for Band Reject Filter losses.
6. Only the worst case emission was recorded, if it complies with the limit, the other emissions deemed to comply with the limit.



Test Mode	Channel	Polarization	Verdict
11G	HCH	Horizontal	PASS



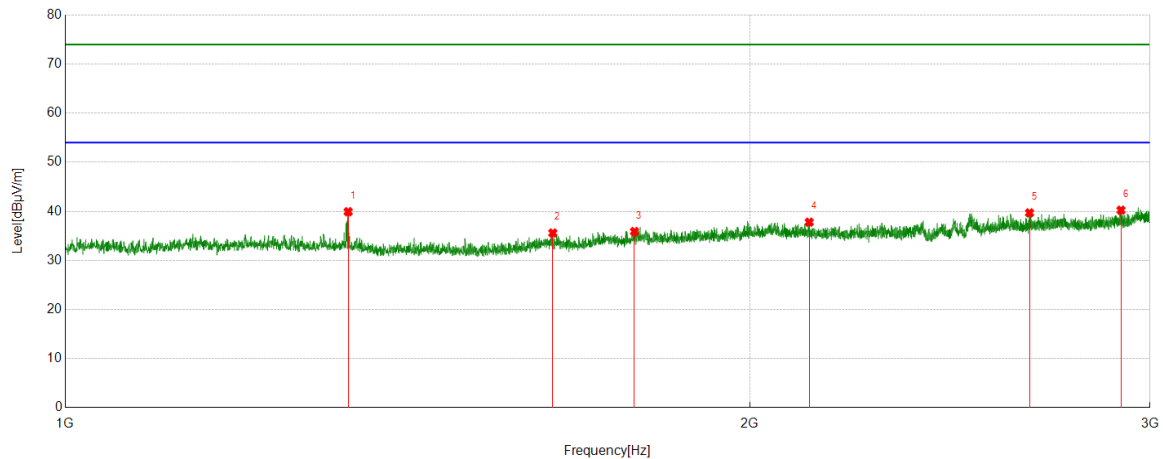
PK Result:

No.	Frequency	Reading Level	Correct Factor	Result	Limit	Margin	Remark
	[MHz]	[dBuV/m]	[dB]	[dBuV/m]	[dBuV/m]	[dB]	
1	1328.7911	41.06	-6.41	34.65	74.00	-39.35	Horizontal
2	1401.3002	42.18	-6.42	35.76	74.00	-38.24	Horizontal
3	1834.3543	41.48	-4.29	37.19	74.00	-36.81	Horizontal
4	2050.3813	40.42	-2.54	37.88	74.00	-36.12	Horizontal
5	2243.4054	41.50	-3.26	38.24	74.00	-35.76	Horizontal
6	2756.9696	41.64	-1.31	40.33	74.00	-33.67	Horizontal

- Note: 1. Measurement = Reading Level + Correct Factor.
2. If Peak Result complies with AV limit, AV Result is deemed to comply with AV limit.
3. Test setup: RBW: 1 MHz, VBW: 3 MHz, Sweep time: auto.
4. Peak: Peak detector.
5. For below 3GHz part, filter losses were only considered in the spurious frequency bands and the authorized band was not corrected for Band Reject Filter losses.
6. Only the worst case emission was recorded, if it complies with the limit, the other emissions deemed to comply with the limit.



Test Mode	Channel	Polarization	Verdict
11G	HCH	Vertical	PASS



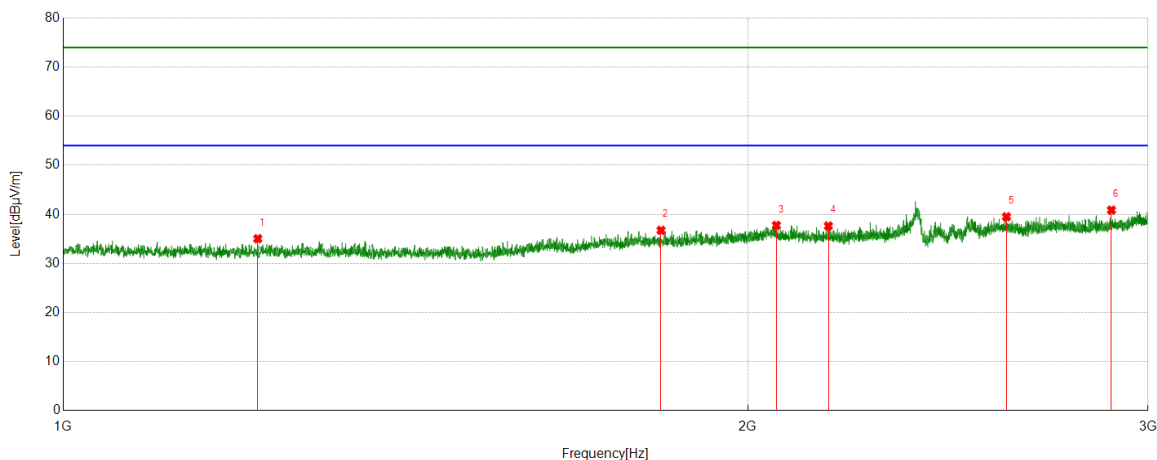
PK Result:

No.	Frequency	Reading Level	Correct Factor	Result	Limit	Margin	Remark
	[MHz]	[dBuV/m]	[dB]	[dBuV/m]	[dBuV/m]	[dB]	
1	1331.7915	46.34	-6.42	39.92	74.00	-34.08	Vertical
2	1638.5798	40.94	-5.35	35.59	74.00	-38.41	Vertical
3	1779.8475	40.28	-4.39	35.89	74.00	-38.11	Vertical
4	2124.3905	40.71	-2.92	37.79	74.00	-36.21	Vertical
5	2655.4569	41.55	-1.86	39.69	74.00	-34.31	Vertical
6	2913.2392	40.89	-0.66	40.23	74.00	-33.77	Vertical

- Note: 1. Measurement = Reading Level + Correct Factor.
2. If Peak Result complies with AV limit, AV Result is deemed to comply with AV limit.
3. Test setup: RBW: 1 MHz, VBW: 3 MHz, Sweep time: auto.
4. Peak: Peak detector.
5. For below 3GHz part, filter losses were only considered in the spurious frequency bands and the authorized band was not corrected for Band Reject Filter losses.
6. Only the worst case emission was recorded, if it complies with the limit, the other emissions deemed to comply with the limit.



Test Mode	Channel	Polarization	Verdict
11N HT20	LCH	Horizontal	PASS



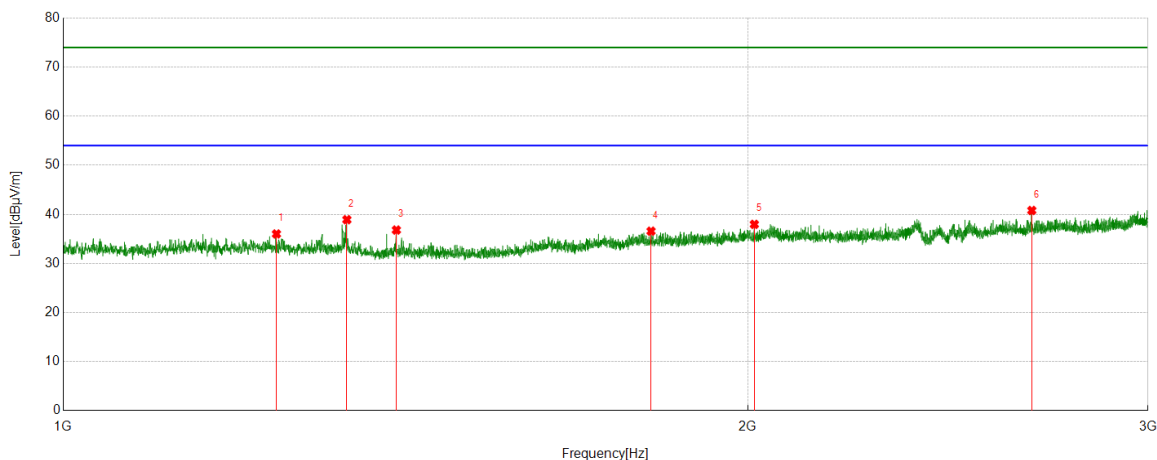
PK Result:

No.	Frequency	Reading Level	Correct Factor	Result	Limit	Margin	Remark
	[MHz]	[dBuV/m]	[dB]	[dBuV/m]	[dBuV/m]	[dB]	
1	1217.7772	41.56	-6.52	35.04	74.00	-38.96	Horizontal
2	1832.104	41.06	-4.32	36.74	74.00	-37.26	Horizontal
3	2059.1324	40.56	-2.81	37.75	74.00	-36.25	Horizontal
4	2170.3963	40.82	-3.19	37.63	74.00	-36.37	Horizontal
5	2599.4499	41.28	-1.77	39.51	74.00	-34.49	Horizontal
6	2890.9864	41.57	-0.71	40.86	74.00	-33.14	Horizontal

- Note: 1. Measurement = Reading Level + Correct Factor.
2. If Peak Result complies with AV limit, AV Result is deemed to comply with AV limit.
3. Test setup: RBW: 1 MHz, VBW: 3 MHz, Sweep time: auto.
4. Peak: Peak detector.
5. For below 3GHz part, filter losses were only considered in the spurious frequency bands and the authorized band was not corrected for Band Reject Filter losses.
6. Only the worst case emission was recorded, if it complies with the limit, the other emissions deemed to comply with the limit.



Test Mode	Channel	Polarization	Verdict
11N HT20	LCH	Vertical	PASS



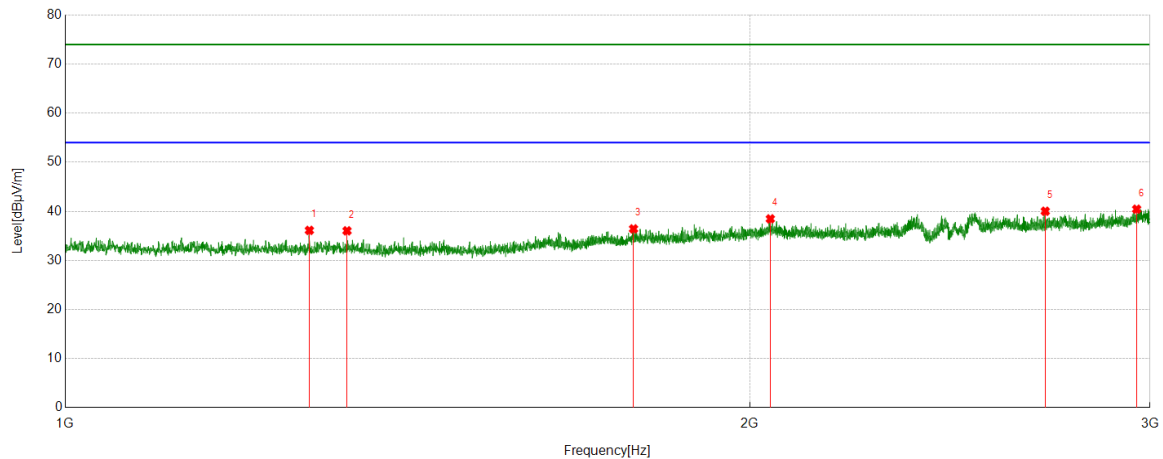
PK Result:

No.	Frequency	Reading Level	Correct Factor	Result	Limit	Margin	Remark
	[MHz]	[dBuV/m]	[dB]	[dBuV/m]	[dBuV/m]	[dB]	
1	1241.0301	42.34	-6.34	36.00	74.00	-38.00	Vertical
2	1332.7916	45.33	-6.42	38.91	74.00	-35.09	Vertical
3	1401.3002	43.22	-6.42	36.80	74.00	-37.20	Vertical
4	1813.6017	40.87	-4.30	36.57	74.00	-37.43	Vertical
5	2013.6267	40.89	-2.93	37.96	74.00	-36.04	Vertical
6	2666.9584	42.63	-1.84	40.79	74.00	-33.21	Vertical

- Note: 1. Measurement = Reading Level + Correct Factor.
2. If Peak Result complies with AV limit, AV Result is deemed to comply with AV limit.
3. Test setup: RBW: 1 MHz, VBW: 3 MHz, Sweep time: auto.
4. Peak: Peak detector.
5. For below 3GHz part, filter losses were only considered in the spurious frequency bands and the authorized band was not corrected for Band Reject Filter losses.
6. Only the worst case emission was recorded, if it complies with the limit, the other emissions deemed to comply with the limit.



Test Mode	Channel	Polarization	Verdict
11N HT20	MCH	Horizontal	PASS



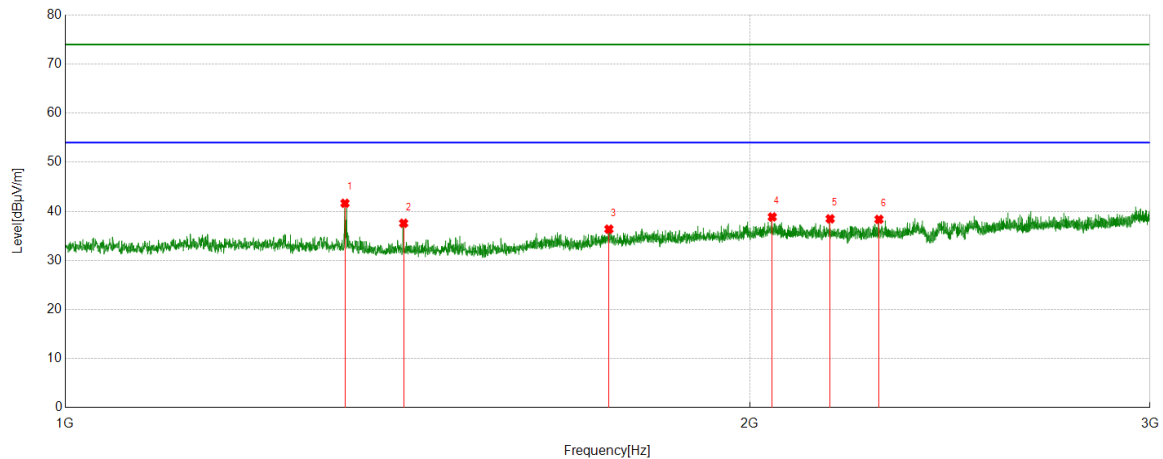
PK Result:

No.	Frequency	Reading Level	Correct Factor	Result	Limit	Margin	Remark
	[MHz]	[dBuV/m]	[dB]	[dBuV/m]	[dBuV/m]	[dB]	
1	1280.5351	42.48	-6.36	36.12	74.00	-37.88	Horizontal
2	1330.2913	42.45	-6.42	36.03	74.00	-37.97	Horizontal
3	1778.0973	40.87	-4.44	36.43	74.00	-37.57	Horizontal
4	2042.3803	40.96	-2.49	38.47	74.00	-35.53	Horizontal
5	2698.2123	41.47	-1.45	40.02	74.00	-33.98	Horizontal
6	2959.745	40.18	0.25	40.43	74.00	-33.57	Horizontal

- Note: 1. Measurement = Reading Level + Correct Factor.
2. If Peak Result complies with AV limit, AV Result is deemed to comply with AV limit.
3. Test setup: RBW: 1 MHz, VBW: 3 MHz, Sweep time: auto.
4. Peak: Peak detector.
5. For below 3GHz part, filter losses were only considered in the spurious frequency bands and the authorized band was not corrected for Band Reject Filter losses.
6. Only the worst case emission was recorded, if it complies with the limit, the other emissions deemed to comply with the limit.



Test Mode	Channel	Polarization	Verdict
11N HT20	MCH	Vertical	PASS



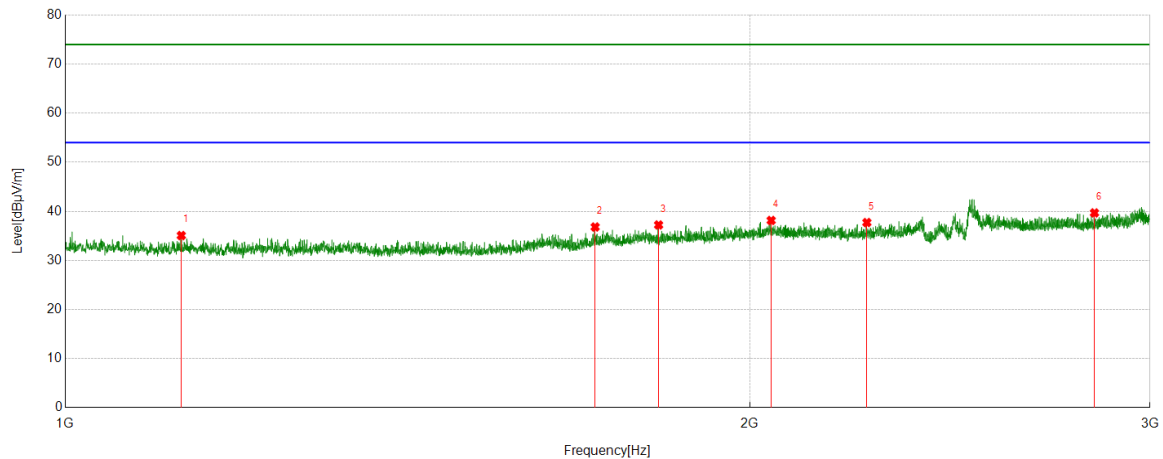
PK Result:

No.	Frequency	Reading Level	Correct Factor	Result	Limit	Margin	Remark
	[MHz]	[dBuV/m]	[dB]	[dBuV/m]	[dBuV/m]	[dB]	
1	1327.5409	48.04	-6.40	41.64	74.00	-32.36	Vertical
2	1408.8011	44.19	-6.62	37.57	74.00	-36.43	Vertical
3	1734.3418	41.11	-4.74	36.37	74.00	-37.63	Vertical
4	2046.3808	41.36	-2.51	38.85	74.00	-35.15	Vertical
5	2169.8962	41.66	-3.19	38.47	74.00	-35.53	Vertical
6	2279.91	41.56	-3.20	38.36	74.00	-35.64	Vertical

- Note: 1. Measurement = Reading Level + Correct Factor.
2. If Peak Result complies with AV limit, AV Result is deemed to comply with AV limit.
3. Test setup: RBW: 1 MHz, VBW: 3 MHz, Sweep time: auto.
4. Peak: Peak detector.
5. For below 3GHz part, filter losses were only considered in the spurious frequency bands and the authorized band was not corrected for Band Reject Filter losses.
6. Only the worst case emission was recorded, if it complies with the limit, the other emissions deemed to comply with the limit.



Test Mode	Channel	Polarization	Verdict
11N HT20	HCH	Horizontal	PASS



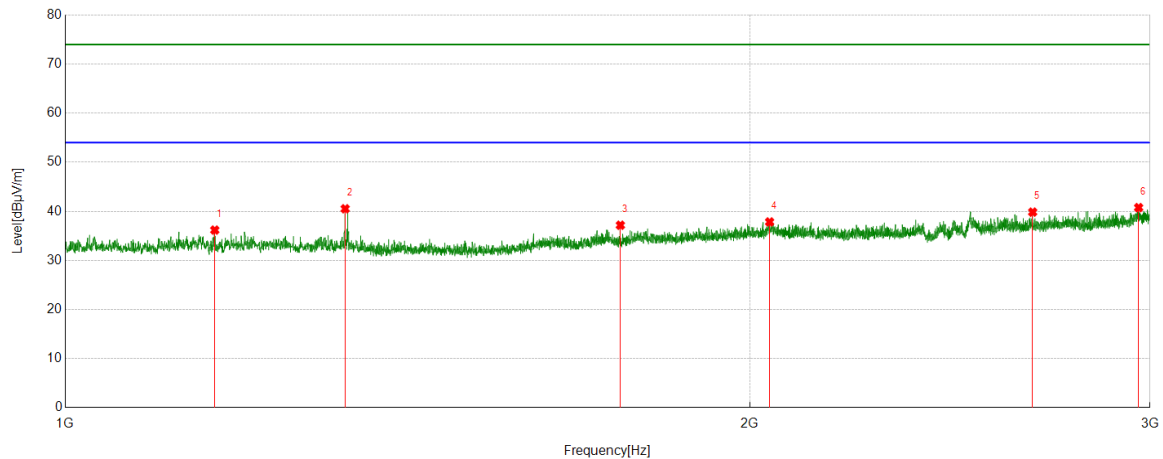
PK Result:

No.	Frequency	Reading Level	Correct Factor	Result	Limit	Margin	Remark
	[MHz]	[dBuV/m]	[dB]	[dBuV/m]	[dBuV/m]	[dB]	
1	1124.7656	41.12	-6.05	35.07	74.00	-38.93	Horizontal
2	1710.3388	41.57	-4.76	36.81	74.00	-37.19	Horizontal
3	1823.853	41.44	-4.22	37.22	74.00	-36.78	Horizontal
4	2044.1305	40.63	-2.49	38.14	74.00	-35.86	Horizontal
5	2252.1565	40.96	-3.24	37.72	74.00	-36.28	Horizontal
6	2835.9795	40.95	-1.27	39.68	74.00	-34.32	Horizontal

- Note: 1. Measurement = Reading Level + Correct Factor.
2. If Peak Result complies with AV limit, AV Result is deemed to comply with AV limit.
3. Test setup: RBW: 1 MHz, VBW: 3 MHz, Sweep time: auto.
4. Peak: Peak detector.
5. For below 3GHz part, filter losses were only considered in the spurious frequency bands and the authorized band was not corrected for Band Reject Filter losses.
6. Only the worst case emission was recorded, if it complies with the limit, the other emissions deemed to comply with the limit.



Test Mode	Channel	Polarization	Verdict
11N HT20	HCH	Vertical	PASS



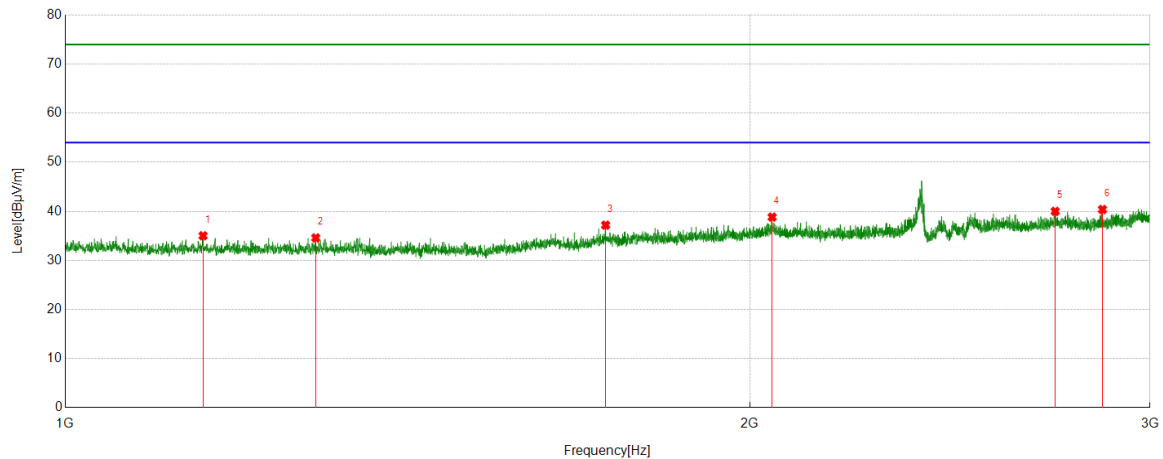
PK Result:

No.	Frequency	Reading Level	Correct Factor	Result	Limit	Margin	Remark
	[MHz]	[dBuV/m]	[dB]	[dBuV/m]	[dBuV/m]	[dB]	
1	1163.5204	42.39	-6.21	36.18	74.00	-37.82	Vertical
2	1327.791	46.92	-6.40	40.52	74.00	-33.48	Vertical
3	1754.5943	42.03	-4.86	37.17	74.00	-36.83	Vertical
4	2040.8801	40.32	-2.48	37.84	74.00	-36.16	Vertical
5	2663.958	41.68	-1.84	39.84	74.00	-34.16	Vertical
6	2965.7457	40.34	0.42	40.76	74.00	-33.24	Vertical

- Note: 1. Measurement = Reading Level + Correct Factor.
2. If Peak Result complies with AV limit, AV Result is deemed to comply with AV limit.
3. Test setup: RBW: 1 MHz, VBW: 3 MHz, Sweep time: auto.
4. Peak: Peak detector.
5. For below 3GHz part, filter losses were only considered in the spurious frequency bands and the authorized band was not corrected for Band Reject Filter losses.
6. Only the worst case emission was recorded, if it complies with the limit, the other emissions deemed to comply with the limit.



Test Mode	Channel	Polarization	Verdict
11N HT40	LCH	Horizontal	PASS



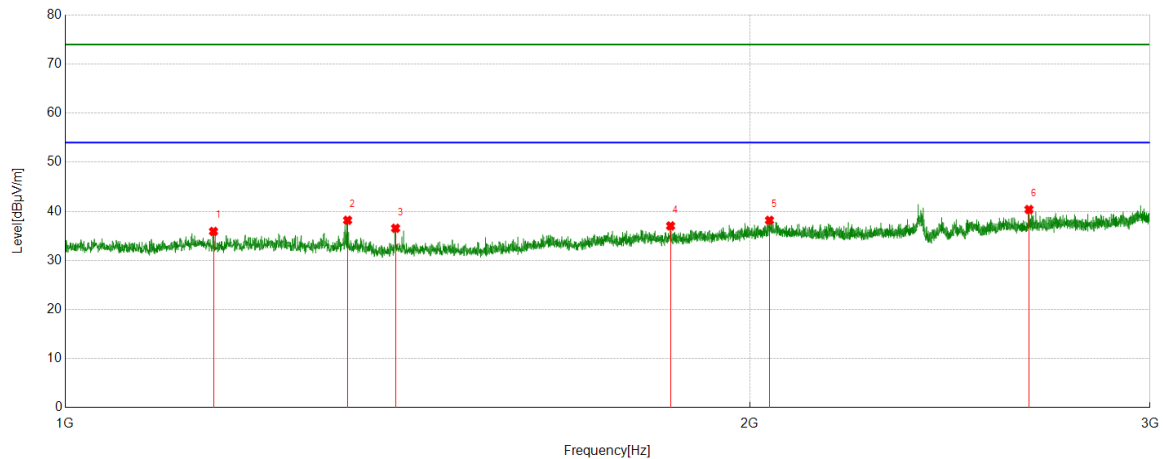
PK Result:

No.	Frequency	Reading Level	Correct Factor	Result	Limit	Margin	Remark
	[MHz]	[dBuV/m]	[dB]	[dBuV/m]	[dBuV/m]	[dB]	
1	1149.7687	41.08	-6.06	35.02	74.00	-38.98	Horizontal
2	1288.7861	41.02	-6.42	34.60	74.00	-39.40	Horizontal
3	1728.5911	41.88	-4.70	37.18	74.00	-36.82	Horizontal
4	2046.1308	41.33	-2.50	38.83	74.00	-35.17	Horizontal
5	2725.4657	41.34	-1.34	40.00	74.00	-34.00	Horizontal
6	2858.9824	41.50	-1.12	40.38	74.00	-33.62	Horizontal

- Note: 1. Measurement = Reading Level + Correct Factor.
2. If Peak Result complies with AV limit, AV Result is deemed to comply with AV limit.
3. Test setup: RBW: 1 MHz, VBW: 3 MHz, Sweep time: auto.
4. Peak: Peak detector.
5. For below 3GHz part, filter losses were only considered in the spurious frequency bands and the authorized band was not corrected for Band Reject Filter losses.
6. Only the worst case emission was recorded, if it complies with the limit, the other emissions deemed to comply with the limit.



Test Mode	Channel	Polarization	Verdict
11N HT40	LCH	Vertical	PASS



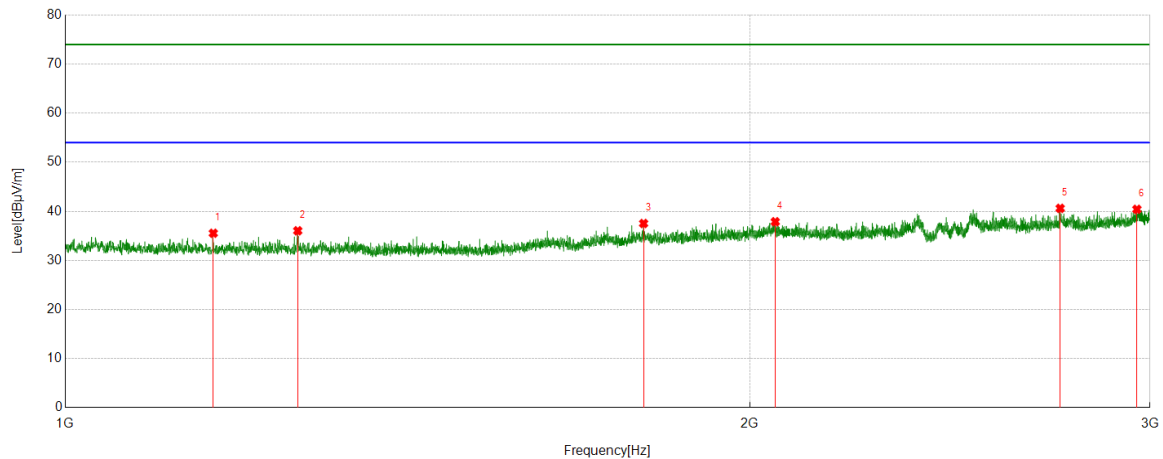
PK Result:

No.	Frequency	Reading Level	Correct Factor	Result	Limit	Margin	Remark
	[MHz]	[dBuV/m]	[dB]	[dBuV/m]	[dBuV/m]	[dB]	
1	1162.0203	42.09	-6.18	35.91	74.00	-38.09	Vertical
2	1331.0414	44.60	-6.42	38.18	74.00	-35.82	Vertical
3	1397.2997	43.03	-6.48	36.55	74.00	-37.45	Vertical
4	1846.1058	41.11	-4.08	37.03	74.00	-36.97	Vertical
5	2040.6301	40.65	-2.48	38.17	74.00	-35.83	Vertical
6	2653.9567	42.25	-1.88	40.37	74.00	-33.63	Vertical

- Note: 1. Measurement = Reading Level + Correct Factor.
2. If Peak Result complies with AV limit, AV Result is deemed to comply with AV limit.
3. Test setup: RBW: 1 MHz, VBW: 3 MHz, Sweep time: auto.
4. Peak: Peak detector.
5. For below 3GHz part, filter losses were only considered in the spurious frequency bands and the authorized band was not corrected for Band Reject Filter losses.
6. Only the worst case emission was recorded, if it complies with the limit, the other emissions deemed to comply with the limit.



Test Mode	Channel	Polarization	Verdict
11N HT40	MCH	Horizontal	PASS



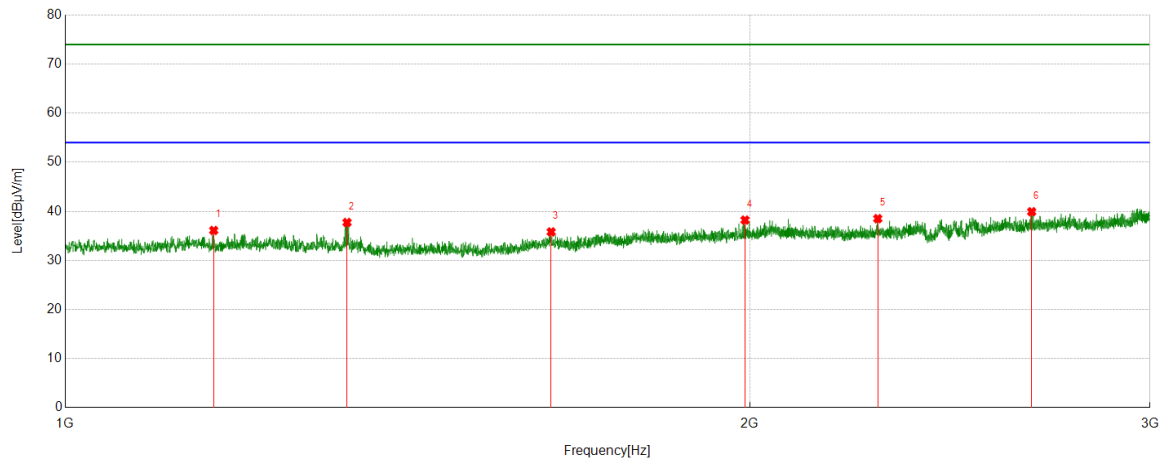
PK Result:

No.	Frequency	Reading Level	Correct Factor	Result	Limit	Margin	Remark
	[MHz]	[dBuV/m]	[dB]	[dBuV/m]	[dBuV/m]	[dB]	
1	1161.7702	41.72	-6.18	35.54	74.00	-38.46	Horizontal
2	1265.5332	42.27	-6.23	36.04	74.00	-37.96	Horizontal
3	1796.3495	41.79	-4.26	37.53	74.00	-36.47	Horizontal
4	2052.6316	40.49	-2.61	37.88	74.00	-36.12	Horizontal
5	2739.2174	42.05	-1.44	40.61	74.00	-33.39	Horizontal
6	2960.4951	40.14	0.27	40.41	74.00	-33.59	Horizontal

- Note: 1. Measurement = Reading Level + Correct Factor.
2. If Peak Result complies with AV limit, AV Result is deemed to comply with AV limit.
3. Test setup: RBW: 1 MHz, VBW: 3 MHz, Sweep time: auto.
4. Peak: Peak detector.
5. For below 3GHz part, filter losses were only considered in the spurious frequency bands and the authorized band was not corrected for Band Reject Filter losses.
6. Only the worst case emission was recorded, if it complies with the limit, the other emissions deemed to comply with the limit.



Test Mode	Channel	Polarization	Verdict
11N HT40	MCH	Vertical	PASS



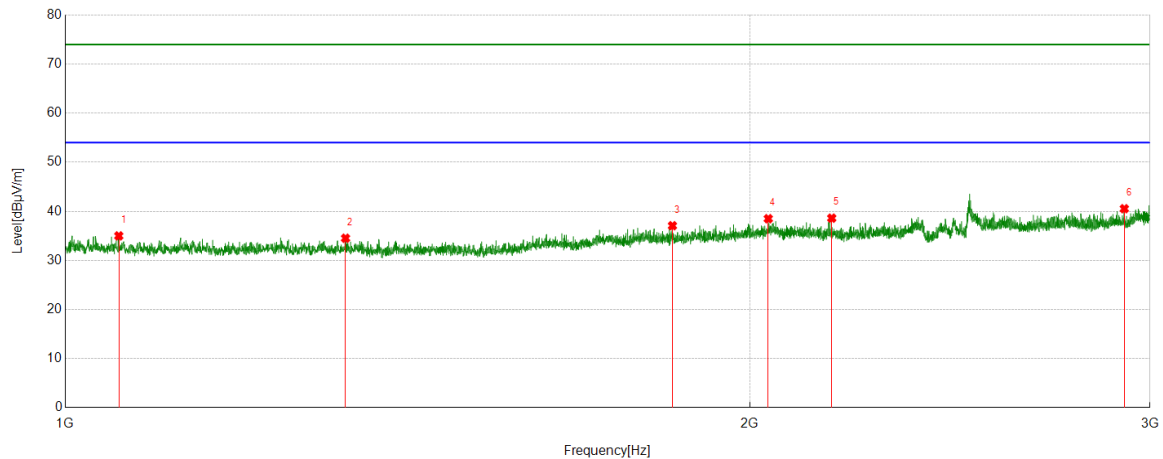
PK Result:

No.	Frequency	Reading Level	Correct Factor	Result	Limit	Margin	Remark
	[MHz]	[dBuV/m]	[dB]	[dBuV/m]	[dBuV/m]	[dB]	
1	1162.2703	42.30	-6.19	36.11	74.00	-37.89	Vertical
2	1330.2913	44.15	-6.42	37.73	74.00	-36.27	Vertical
3	1635.8295	41.17	-5.36	35.81	74.00	-38.19	Vertical
4	1990.6238	41.41	-3.19	38.22	74.00	-35.78	Vertical
5	2277.1596	41.72	-3.21	38.51	74.00	-35.49	Vertical
6	2661.2077	41.75	-1.83	39.92	74.00	-34.08	Vertical

- Note: 1. Measurement = Reading Level + Correct Factor.
2. If Peak Result complies with AV limit, AV Result is deemed to comply with AV limit.
3. Test setup: RBW: 1 MHz, VBW: 3 MHz, Sweep time: auto.
4. Peak: Peak detector.
5. For below 3GHz part, filter losses were only considered in the spurious frequency bands and the authorized band was not corrected for Band Reject Filter losses.
6. Only the worst case emission was recorded, if it complies with the limit, the other emissions deemed to comply with the limit.



Test Mode	Channel	Polarization	Verdict
11N HT40	HCH	Horizontal	PASS



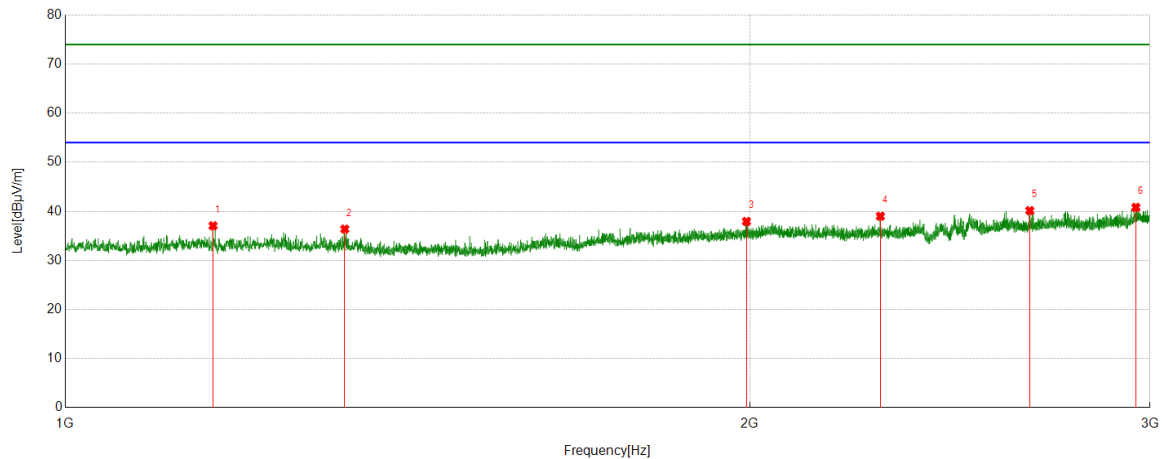
PK Result:

No.	Frequency	Reading Level	Correct Factor	Result	Limit	Margin	Remark
	[MHz]	[dBuV/m]	[dB]	[dBuV/m]	[dBuV/m]	[dB]	
1	1055.757	40.70	-5.70	35.00	74.00	-39.00	Horizontal
2	1328.291	40.93	-6.41	34.52	74.00	-39.48	Horizontal
3	1849.6062	41.08	-4.01	37.07	74.00	-36.93	Horizontal
4	2038.1298	41.04	-2.54	38.50	74.00	-35.50	Horizontal
5	2173.3967	41.80	-3.19	38.61	74.00	-35.39	Horizontal
6	2922.9904	41.01	-0.48	40.53	74.00	-33.47	Horizontal

- Note: 1. Measurement = Reading Level + Correct Factor.
2. If Peak Result complies with AV limit, AV Result is deemed to comply with AV limit.
3. Test setup: RBW: 1 MHz, VBW: 3 MHz, Sweep time: auto.
4. Peak: Peak detector.
5. For below 3GHz part, filter losses were only considered in the spurious frequency bands and the authorized band was not corrected for Band Reject Filter losses.
6. Only the worst case emission was recorded, if it complies with the limit, the other emissions deemed to comply with the limit.



Test Mode	Channel	Polarization	Verdict
11N HT40	HCH	Vertical	PASS



PK Result:

No.	Frequency	Reading Level	Correct Factor	Result	Limit	Margin	Remark
	[MHz]	[dBuV/m]	[dB]	[dBuV/m]	[dBuV/m]	[dB]	
1	1161.5202	43.22	-6.17	37.05	74.00	-36.95	Vertical
2	1327.2909	42.79	-6.40	36.39	74.00	-37.61	Vertical
3	1993.6242	41.08	-3.14	37.94	74.00	-36.06	Vertical
4	2283.1604	42.19	-3.19	39.00	74.00	-35.00	Vertical
5	2656.207	42.00	-1.86	40.14	74.00	-33.86	Vertical
6	2957.4947	40.64	0.16	40.80	74.00	-33.20	Vertical

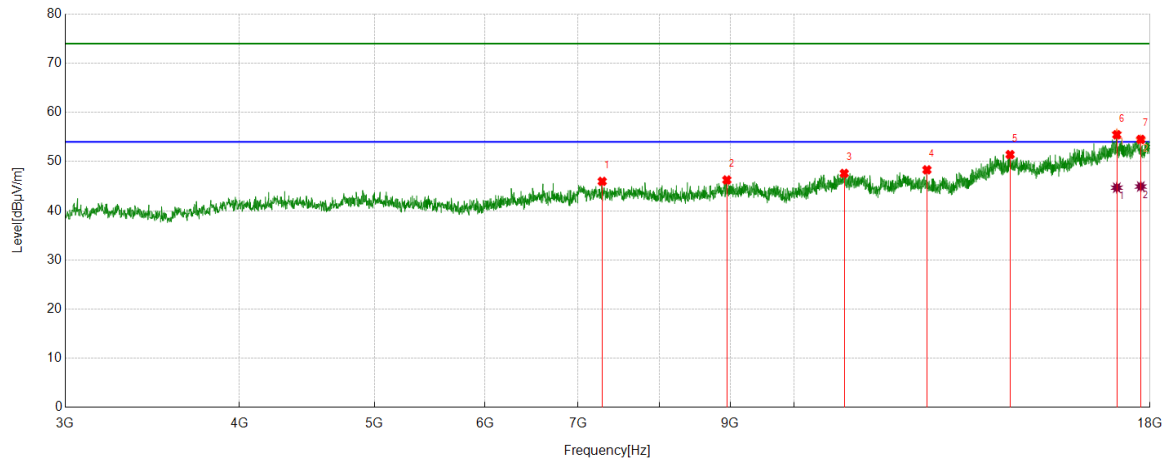
- Note: 1. Measurement = Reading Level + Correct Factor.
2. If Peak Result complies with AV limit, AV Result is deemed to comply with AV limit.
3. Test setup: RBW: 1 MHz, VBW: 3 MHz, Sweep time: auto.
4. Peak: Peak detector.
5. For below 3GHz part, filter losses were only considered in the spurious frequency bands and the authorized band was not corrected for Band Reject Filter losses.
6. Only the worst case emission was recorded, if it complies with the limit, the other emissions deemed to comply with the limit.



Part 2: 3GHz~18GHz

HARMONICS AND SPURIOUS EMISSIONS

Test Mode	Channel	Polarization	Verdict
11B	LCH	Horizontal	PASS



PK Result:

No.	Frequency	Reading Level	Correct Factor	Result	Limit	Margin	Remark
	[MHz]	[dBuV/m]	[dB]	[dBuV/m]	[dBuV/m]	[dB]	
1	7283.0354	37.33	8.64	45.97	74.00	-28.03	Horizontal
2	8948.2435	36.75	9.51	46.26	74.00	-27.74	Horizontal
3	10862.8579	35.46	12.14	47.60	74.00	-26.40	Horizontal
4	12453.0566	36.57	11.75	48.32	74.00	-25.68	Horizontal
5	14287.0359	35.47	15.95	51.42	74.00	-22.58	Horizontal
6	17039.88	36.02	19.43	55.45	74.00	-18.55	Horizontal
7	17728.091	35.15	19.36	54.51	74.00	-19.49	Horizontal

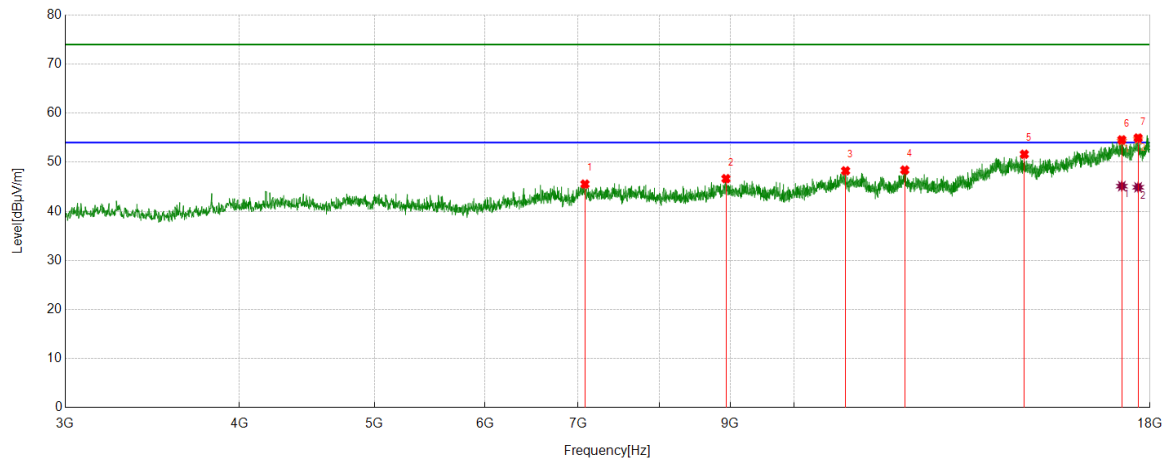
AV Result:

No.	Frequency	Reading Level	Correct Factor	Result	Limit	Margin	Remark
	[MHz]	[dBuV/m]	[dB]	[dBuV/m]	[dBuV/m]	[dB]	
1	17039.88	25.26	19.43	44.69	54.00	-9.31	Horizontal
2	17728.091	25.57	19.36	44.93	54.00	-9.07	Horizontal

- Note: 1. Measurement = Reading Level + Correct Factor.
2. If Peak Result complies with AV limit, AV Result is deemed to comply with AV limit.
3. Peak detector: RBW: 1 MHz, VBW: 3 MHz.
4. Average detector: RBW: 1 MHz, VBW: 1/T MHz(refer to clause 7.1.).
5. For above 3GHz part, filter losses were only considered in the spurious frequency bands and the authorized band was not corrected for HPF losses.
6. Only the worst case emission was recorded, if it complies with the limit, the other emissions deemed to comply with the limit.



Test Mode	Channel	Polarization	Verdict
11B	LCH	Vertical	PASS



PK Result:

No.	Frequency	Reading Level	Correct Factor	Result	Limit	Margin	Remark
	[MHz]	[dBuV/m]	[dB]	[dBuV/m]	[dBuV/m]	[dB]	
1	7078.6348	36.12	9.42	45.54	74.00	-28.46	Vertical
2	8935.1169	37.35	9.30	46.65	74.00	-27.35	Vertical
3	10887.2359	35.98	12.27	48.25	74.00	-25.75	Vertical
4	12004.8756	35.51	12.90	48.41	74.00	-25.59	Vertical
5	14626.4533	35.79	15.84	51.63	74.00	-22.37	Vertical
6	17182.3978	35.67	18.89	54.56	74.00	-19.44	Vertical
7	17651.2064	35.48	19.46	54.94	74.00	-19.06	Vertical

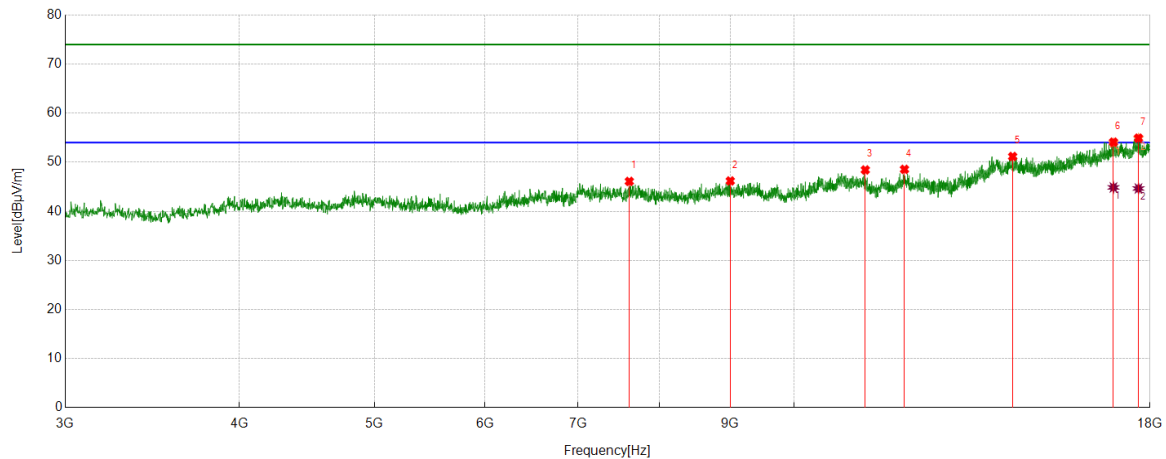
AV Result:

No.	Frequency	Reading Level	Correct Factor	Result	Limit	Margin	Remark
	[MHz]	[dBuV/m]	[dB]	[dBuV/m]	[dBuV/m]	[dB]	
1	17182.3978	26.24	18.89	45.13	54.00	-8.87	Vertical
2	17651.2064	25.44	19.46	44.90	54.00	-9.10	Vertical

- Note: 1. Measurement = Reading Level + Correct Factor.
2. If Peak Result complies with AV limit, AV Result is deemed to comply with AV limit.
3. Peak detector: RBW: 1 MHz, VBW: 3 MHz.
4. Average detector: RBW: 1 MHz, VBW: 1/T MHz(refer to clause 7.1.).
5. For above 3GHz part, filter losses were only considered in the spurious frequency bands and the authorized band was not corrected for HPF losses.
6. Only the worst case emission was recorded, if it complies with the limit, the other emissions deemed to comply with the limit.



Test Mode	Channel	Polarization	Verdict
11B	MCH	Horizontal	PASS



PK Result:

No.	Frequency	Reading Level	Correct Factor	Result	Limit	Margin	Remark
	[MHz]	[dBuV/m]	[dB]	[dBuV/m]	[dBuV/m]	[dB]	
1	7616.8271	37.56	8.54	46.10	74.00	-27.90	Horizontal
2	8998.8749	36.69	9.50	46.19	74.00	-27.81	Horizontal
3	11247.2809	36.70	11.73	48.43	74.00	-25.57	Horizontal
4	11999.2499	35.60	12.95	48.55	74.00	-25.45	Horizontal
5	14347.0434	35.17	16.00	51.17	74.00	-22.83	Horizontal
6	16946.1183	34.64	19.45	54.09	74.00	-19.91	Horizontal
7	17660.5826	35.30	19.61	54.91	74.00	-19.09	Horizontal

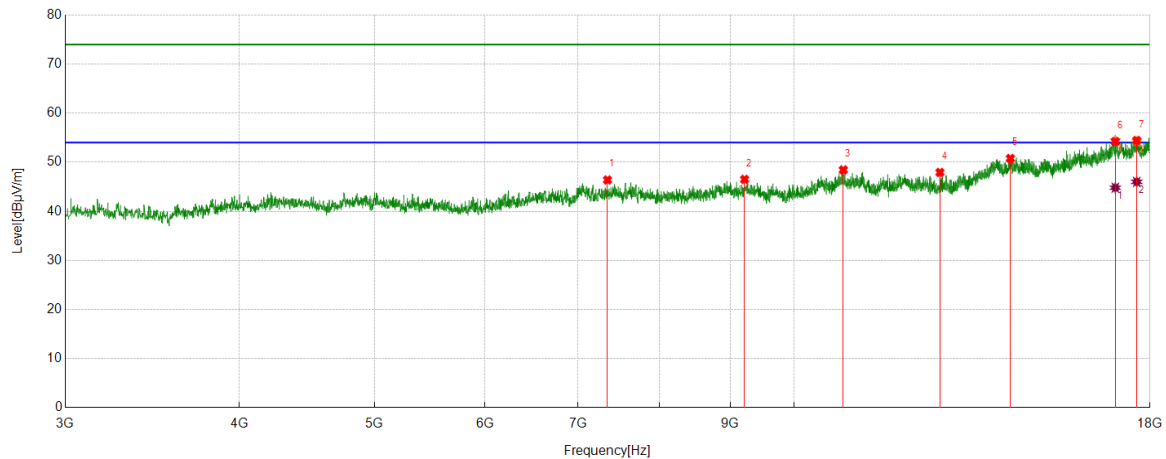
AV Result:

No.	Frequency	Reading Level	Correct Factor	Result	Limit	Margin	Remark
	[MHz]	[dBuV/m]	[dB]	[dBuV/m]	[dBuV/m]	[dB]	
1	16946.1183	25.42	19.45	44.87	54.00	-9.13	Horizontal
2	17660.5826	25.04	19.61	44.65	54.00	-9.35	Horizontal

- Note: 1. Measurement = Reading Level + Correct Factor.
2. If Peak Result complies with AV limit, AV Result is deemed to comply with AV limit.
3. Peak detector: RBW: 1 MHz, VBW: 3 MHz.
4. Average detector: RBW: 1 MHz, VBW: 1/T MHz(refer to clause 7.1.).
5. For above 3GHz part, filter losses were only considered in the spurious frequency bands and the authorized band was not corrected for HPF losses.
6. Only the worst case emission was recorded, if it complies with the limit, the other emissions deemed to comply with the limit.



Test Mode	Channel	Polarization	Verdict
11B	MCH	Vertical	PASS



PK Result:

No.	Frequency	Reading Level	Correct Factor	Result	Limit	Margin	Remark
	[MHz]	[dBuV/m]	[dB]	[dBuV/m]	[dBuV/m]	[dB]	
1	7346.7933	37.93	8.46	46.39	74.00	-27.61	Vertical
2	9214.5268	37.15	9.36	46.51	74.00	-27.49	Vertical
3	10845.9807	36.31	12.13	48.44	74.00	-25.56	Vertical
4	12723.0904	36.39	11.53	47.92	74.00	-26.08	Vertical
5	14292.6616	34.77	16.00	50.77	74.00	-23.23	Vertical
6	16998.6248	35.07	19.14	54.21	74.00	-19.79	Vertical
7	17609.9512	34.78	19.65	54.43	74.00	-19.57	Vertical

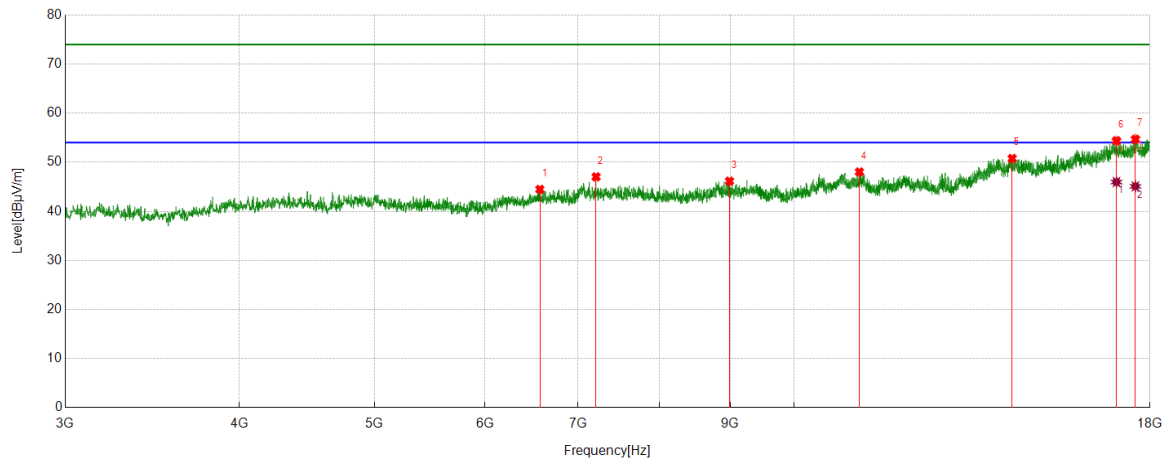
AV Result:

No.	Frequency	Reading Level	Correct Factor	Result	Limit	Margin	Remark
	[MHz]	[dBuV/m]	[dB]	[dBuV/m]	[dBuV/m]	[dB]	
1	16998.6248	25.67	19.14	44.81	54.00	-9.19	Vertical
2	17609.9512	26.36	19.65	46.01	54.00	-7.99	Vertical

- Note: 1. Measurement = Reading Level + Correct Factor.
2. If Peak Result complies with AV limit, AV Result is deemed to comply with AV limit.
3. Peak detector: RBW: 1 MHz, VBW: 3 MHz.
4. Average detector: RBW: 1 MHz, VBW: 1/T MHz(refer to clause 7.1.).
5. For above 3GHz part, filter losses were only considered in the spurious frequency bands and the authorized band was not corrected for HPF losses.
6. Only the worst case emission was recorded, if it complies with the limit, the other emissions deemed to comply with the limit.



Test Mode	Channel	Polarization	Verdict
11B	HCH	Horizontal	PASS



PK Result:

No.	Frequency	Reading Level	Correct Factor	Result	Limit	Margin	Remark
	[MHz]	[dBuV/m]	[dB]	[dBuV/m]	[dBuV/m]	[dB]	
1	6570.4463	36.00	8.47	44.47	74.00	-29.53	Horizontal
2	7209.9012	38.23	8.80	47.03	74.00	-26.97	Horizontal
3	8987.6235	36.77	9.38	46.15	74.00	-27.85	Horizontal
4	11138.5173	35.87	12.16	48.03	74.00	-25.97	Horizontal
5	14335.792	34.62	16.15	50.77	74.00	-23.23	Horizontal
6	17030.5038	35.04	19.34	54.38	74.00	-19.62	Horizontal
7	17572.4466	34.70	19.97	54.67	74.00	-19.33	Horizontal

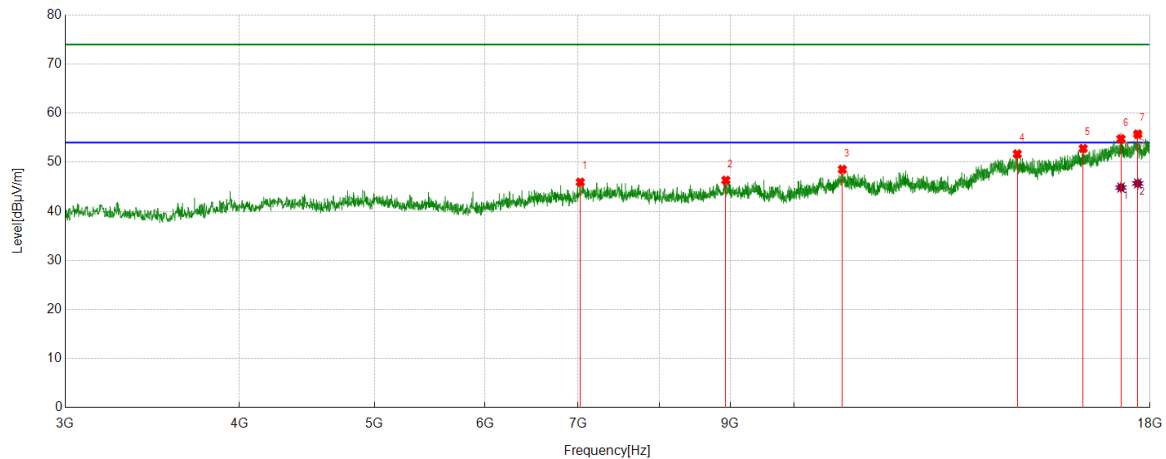
AV Result:

No.	Frequency	Reading Level	Correct Factor	Result	Limit	Margin	Remark
	[MHz]	[dBuV/m]	[dB]	[dBuV/m]	[dBuV/m]	[dB]	
1	17030.5038	26.63	19.34	45.97	54.00	-8.03	Horizontal
2	17572.4466	25.12	19.97	45.09	54.00	-8.91	Horizontal

- Note: 1. Measurement = Reading Level + Correct Factor.
2. If Peak Result complies with AV limit, AV Result is deemed to comply with AV limit.
3. Peak detector: RBW: 1 MHz, VBW: 3 MHz.
4. Average detector: RBW: 1 MHz, VBW: 1/T MHz(refer to clause 7.1.).
5. For above 3GHz part, filter losses were only considered in the spurious frequency bands and the authorized band was not corrected for HPF losses.
6. Only the worst case emission was recorded, if it complies with the limit, the other emissions deemed to comply with the limit.



Test Mode	Channel	Polarization	Verdict
11B	HCH	Vertical	PASS



PK Result:

No.	Frequency	Reading Level	Correct Factor	Result	Limit	Margin	Remark
	[MHz]	[dBuV/m]	[dB]	[dBuV/m]	[dBuV/m]	[dB]	
1	7024.253	36.70	9.24	45.94	74.00	-28.06	Vertical
2	8933.2417	37.03	9.30	46.33	74.00	-27.67	Vertical
3	10829.1036	36.31	12.23	48.54	74.00	-25.46	Vertical
4	14455.807	35.76	15.93	51.69	74.00	-22.31	Vertical
5	16119.1399	35.60	17.20	52.80	74.00	-21.20	Vertical
6	17158.0198	35.69	19.06	54.75	74.00	-19.25	Vertical
7	17639.955	36.44	19.29	55.73	74.00	-18.27	Vertical

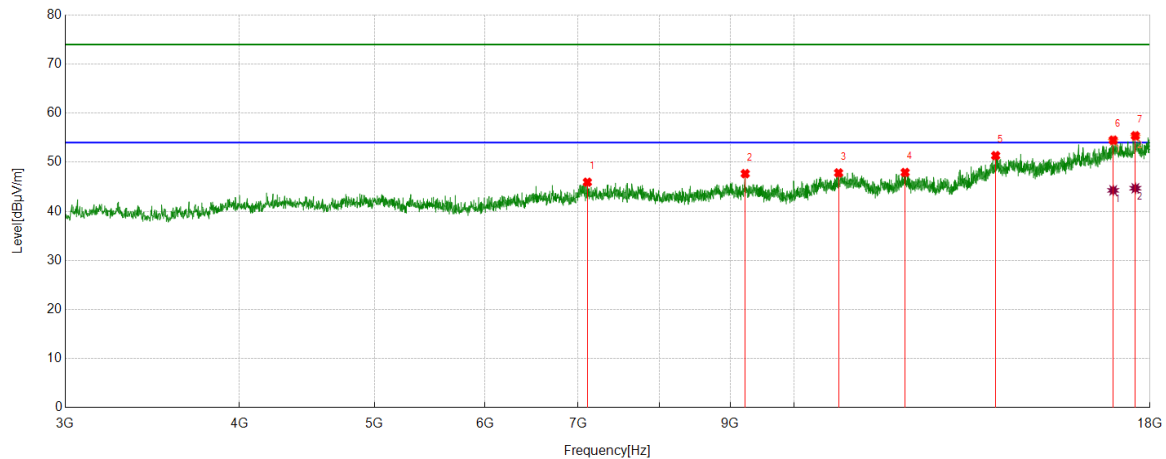
AV Result:

No.	Frequency	Reading Level	Correct Factor	Result	Limit	Margin	Remark
	[MHz]	[dBuV/m]	[dB]	[dBuV/m]	[dBuV/m]	[dB]	
1	17158.0198	25.79	19.06	44.85	54.00	-9.15	Vertical
2	17639.955	26.39	19.29	45.68	54.00	-8.32	Vertical

- Note: 1. Measurement = Reading Level + Correct Factor.
2. If Peak Result complies with AV limit, AV Result is deemed to comply with AV limit.
3. Peak detector: RBW: 1 MHz, VBW: 3 MHz.
4. Average detector: RBW: 1 MHz, VBW: 1/T MHz(refer to clause 7.1.).
5. For above 3GHz part, filter losses were only considered in the spurious frequency bands and the authorized band was not corrected for HPF losses.
6. Only the worst case emission was recorded, if it complies with the limit, the other emissions deemed to comply with the limit.



Test Mode	Channel	Polarization	Verdict
11G	LCH	Horizontal	PASS



PK Result:

No.	Frequency	Reading Level	Correct Factor	Result	Limit	Margin	Remark
	[MHz]	[dBuV/m]	[dB]	[dBuV/m]	[dBuV/m]	[dB]	
1	7106.7633	36.64	9.30	45.94	74.00	-28.06	Horizontal
2	9223.903	38.32	9.35	47.67	74.00	-26.33	Horizontal
3	10761.5952	35.86	11.97	47.83	74.00	-26.17	Horizontal
4	12012.3765	35.09	12.83	47.92	74.00	-26.08	Horizontal
5	13949.4937	35.81	15.54	51.35	74.00	-22.65	Horizontal
6	16938.6173	35.18	19.32	54.50	74.00	-19.50	Horizontal
7	17570.5713	35.36	20.04	55.40	74.00	-18.60	Horizontal

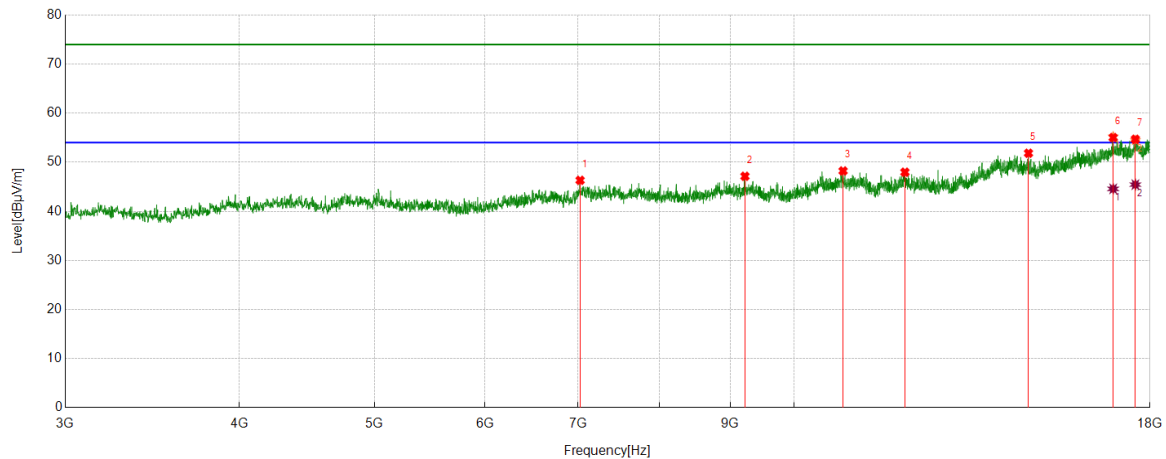
AV Result:

No.	Frequency	Reading Level	Correct Factor	Result	Limit	Margin	Remark
	[MHz]	[dBuV/m]	[dB]	[dBuV/m]	[dBuV/m]	[dB]	
1	16938.6173	24.95	19.32	44.27	54.00	-9.73	Horizontal
2	17570.5713	24.66	20.04	44.70	54.00	-9.30	Horizontal

- Note: 1. Measurement = Reading Level + Correct Factor.
2. If Peak Result complies with AV limit, AV Result is deemed to comply with AV limit.
3. Peak detector: RBW: 1 MHz, VBW: 3 MHz.
4. Average detector: RBW: 1 MHz, VBW: 1/T MHz(refer to clause 7.1.).
5. For above 3GHz part, filter losses were only considered in the spurious frequency bands and the authorized band was not corrected for HPF losses.
6. Only the worst case emission was recorded, if it complies with the limit, the other emissions deemed to comply with the limit.



Test Mode	Channel	Polarization	Verdict
11G	LCH	Vertical	PASS



PK Result:

No.	Frequency	Reading Level	Correct Factor	Result	Limit	Margin	Remark
	[MHz]	[dBuV/m]	[dB]	[dBuV/m]	[dBuV/m]	[dB]	
1	7022.3778	37.06	9.26	46.32	74.00	-27.68	Vertical
2	9220.1525	37.84	9.30	47.14	74.00	-26.86	Vertical
3	10842.2303	36.12	12.11	48.23	74.00	-25.77	Vertical
4	12008.6261	35.11	12.86	47.97	74.00	-26.03	Vertical
5	14727.716	36.45	15.39	51.84	74.00	-22.16	Vertical
6	16938.6173	35.70	19.32	55.02	74.00	-18.98	Vertical
7	17570.5713	34.64	20.04	54.68	74.00	-19.32	Vertical

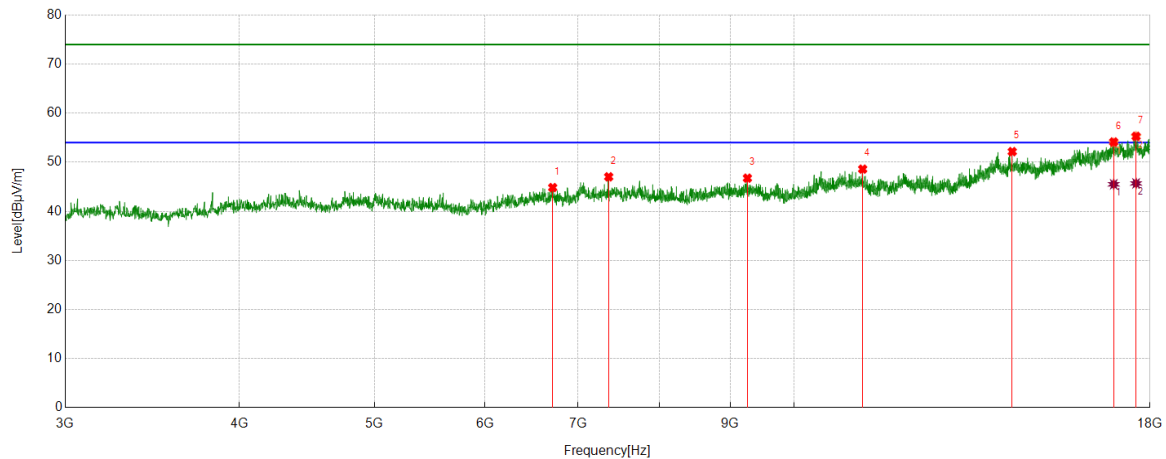
AV Result:

No.	Frequency	Reading Level	Correct Factor	Result	Limit	Margin	Remark
	[MHz]	[dBuV/m]	[dB]	[dBuV/m]	[dBuV/m]	[dB]	
1	16938.6173	25.26	19.32	44.58	54.00	-9.42	Vertical
2	17570.5713	25.40	20.04	45.44	54.00	-8.56	Vertical

- Note: 1. Measurement = Reading Level + Correct Factor.
2. If Peak Result complies with AV limit, AV Result is deemed to comply with AV limit.
3. Peak detector: RBW: 1 MHz, VBW: 3 MHz.
4. Average detector: RBW: 1 MHz, VBW: 1/T MHz(refer to clause 7.1.).
5. For above 3GHz part, filter losses were only considered in the spurious frequency bands and the authorized band was not corrected for HPF losses.
6. Only the worst case emission was recorded, if it complies with the limit, the other emissions deemed to comply with the limit.



Test Mode	Channel	Polarization	Verdict
11G	MCH	Horizontal	PASS



PK Result:

No.	Frequency	Reading Level	Correct Factor	Result	Limit	Margin	Remark
	[MHz]	[dBuV/m]	[dB]	[dBuV/m]	[dBuV/m]	[dB]	
1	6711.0889	36.02	8.82	44.84	74.00	-29.16	Horizontal
2	7361.7952	38.68	8.35	47.03	74.00	-26.97	Horizontal
3	9257.6572	37.47	9.29	46.76	74.00	-27.24	Horizontal
4	11198.5248	36.74	11.86	48.60	74.00	-25.40	Horizontal
5	14337.6672	35.97	16.19	52.16	74.00	-21.84	Horizontal
6	16953.6192	34.54	19.59	54.13	74.00	-19.87	Horizontal
7	17591.1989	35.55	19.73	55.28	74.00	-18.72	Horizontal

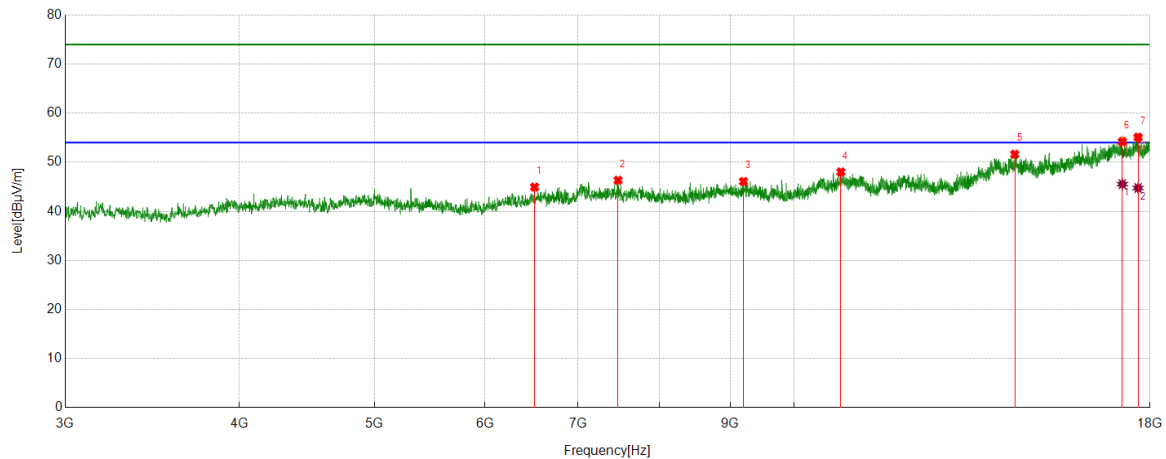
AV Result:

No.	Frequency	Reading Level	Correct Factor	Result	Limit	Margin	Remark
	[MHz]	[dBuV/m]	[dB]	[dBuV/m]	[dBuV/m]	[dB]	
1	16953.6192	25.92	19.59	45.51	54.00	-8.49	Horizontal
2	17591.1989	25.96	19.73	45.69	54.00	-8.31	Horizontal

- Note: 1. Measurement = Reading Level + Correct Factor.
2. If Peak Result complies with AV limit, AV Result is deemed to comply with AV limit.
3. Peak detector: RBW: 1 MHz, VBW: 3 MHz.
4. Average detector: RBW: 1 MHz, VBW: 1/T MHz(refer to clause 7.1.).
5. For above 3GHz part, filter losses were only considered in the spurious frequency bands and the authorized band was not corrected for HPF losses.
6. Only the worst case emission was recorded, if it complies with the limit, the other emissions deemed to comply with the limit.



Test Mode	Channel	Polarization	Verdict
11G	MCH	Vertical	PASS



PK Result:

No.	Frequency	Reading Level	Correct Factor	Result	Limit	Margin	Remark
	[MHz]	[dBuV/m]	[dB]	[dBuV/m]	[dBuV/m]	[dB]	
1	6514.1893	36.37	8.57	44.94	74.00	-29.06	Vertical
2	7476.1845	37.71	8.60	46.31	74.00	-27.69	Vertical
3	9197.6497	36.76	9.31	46.07	74.00	-27.93	Vertical
4	10802.8504	35.96	12.06	48.02	74.00	-25.98	Vertical
5	14397.6747	35.91	15.71	51.62	74.00	-22.38	Vertical
6	17197.3997	35.03	19.15	54.18	74.00	-19.82	Vertical
7	17649.3312	35.66	19.43	55.09	74.00	-18.91	Vertical

AV Result:

No.	Frequency	Reading Level	Correct Factor	Result	Limit	Margin	Remark
	[MHz]	[dBuV/m]	[dB]	[dBuV/m]	[dBuV/m]	[dB]	
1	17197.3997	26.39	19.15	45.54	54.00	-8.46	Vertical
2	17649.3312	25.32	19.43	44.75	54.00	-9.25	Vertical

Note: 1. Measurement = Reading Level + Correct Factor.

2. If Peak Result complies with AV limit, AV Result is deemed to comply with AV limit.

3. Peak detector: RBW: 1 MHz, VBW: 3 MHz.

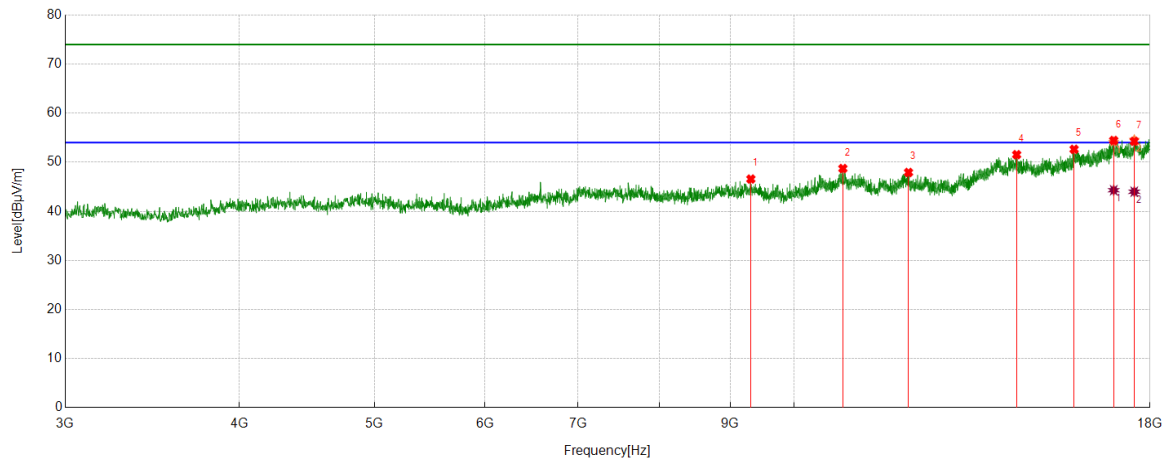
4. Average detector: RBW: 1 MHz, VBW: 1/T MHz(refer to clause 7.1.).

5. For above 3GHz part, filter losses were only considered in the spurious frequency bands and the authorized band was not corrected for HPF losses.

6. Only the worst case emission was recorded, if it complies with the limit, the other emissions deemed to comply with the limit.



Test Mode	Channel	Polarization	Verdict
11G	HCH	Horizontal	PASS



PK Result:

No.	Frequency	Reading Level	Correct Factor	Result	Limit	Margin	Remark
	[MHz]	[dBuV/m]	[dB]	[dBuV/m]	[dBuV/m]	[dB]	
1	9310.1638	37.31	9.27	46.58	74.00	-27.42	Horizontal
2	10838.4798	36.60	12.12	48.72	74.00	-25.28	Horizontal
3	12079.885	35.01	12.91	47.92	74.00	-26.08	Horizontal
4	14442.6803	35.49	16.05	51.54	74.00	-22.46	Horizontal
5	15879.1099	35.48	17.16	52.64	74.00	-21.36	Horizontal
6	16953.6192	34.84	19.59	54.43	74.00	-19.57	Horizontal
7	17538.6923	35.24	19.02	54.26	74.00	-19.74	Horizontal

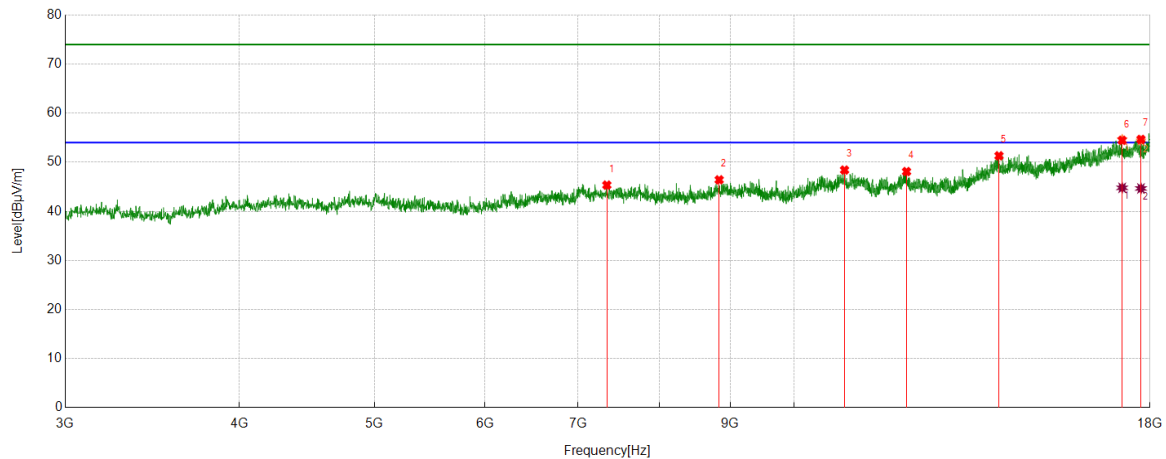
AV Result:

No.	Frequency	Reading Level	Correct Factor	Result	Limit	Margin	Remark
	[MHz]	[dBuV/m]	[dB]	[dBuV/m]	[dBuV/m]	[dB]	
1	16953.6192	24.71	19.59	44.30	54.00	-9.70	Horizontal
2	17538.6923	24.98	19.02	44.00	54.00	-10.00	Horizontal

- Note: 1. Measurement = Reading Level + Correct Factor.
2. If Peak Result complies with AV limit, AV Result is deemed to comply with AV limit.
3. Peak detector: RBW: 1 MHz, VBW: 3 MHz.
4. Average detector: RBW: 1 MHz, VBW: 1/T MHz(refer to clause 7.1.).
5. For above 3GHz part, filter losses were only considered in the spurious frequency bands and the authorized band was not corrected for HPF losses.
6. Only the worst case emission was recorded, if it complies with the limit, the other emissions deemed to comply with the limit.



Test Mode	Channel	Polarization	Verdict
11G	HCH	Vertical	PASS



PK Result:

No.	Frequency	Reading Level	Correct Factor	Result	Limit	Margin	Remark
	[MHz]	[dBuV/m]	[dB]	[dBuV/m]	[dBuV/m]	[dB]	
1	7339.2924	36.90	8.44	45.34	74.00	-28.66	Vertical
2	8835.7295	37.24	9.18	46.42	74.00	-27.58	Vertical
3	10868.4836	36.31	12.10	48.41	74.00	-25.59	Vertical
4	12040.5051	35.62	12.48	48.10	74.00	-25.90	Vertical
5	14026.3783	35.35	15.96	51.31	74.00	-22.69	Vertical
6	17191.774	35.27	19.20	54.47	74.00	-19.53	Vertical
7	17733.7167	35.37	19.28	54.65	74.00	-19.35	Vertical

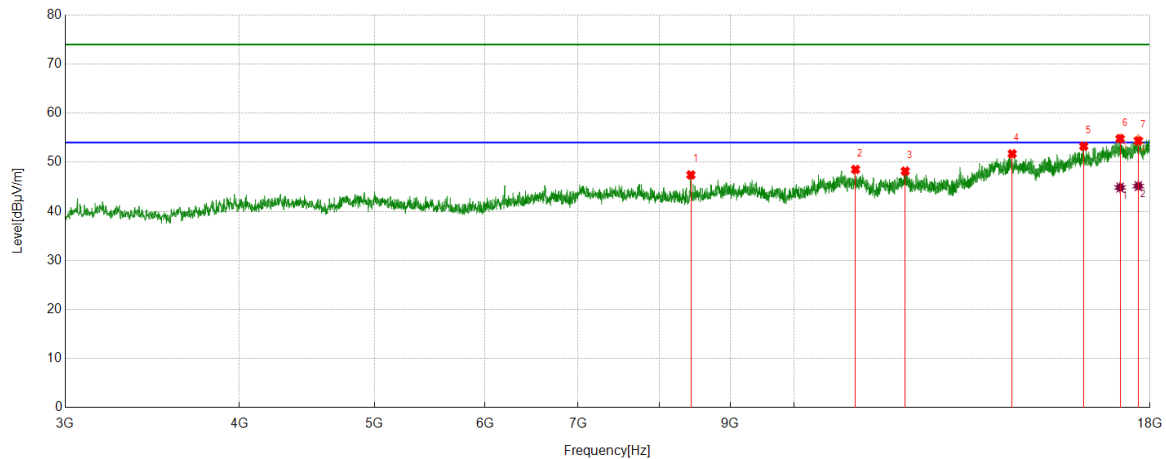
AV Result:

No.	Frequency	Reading Level	Correct Factor	Result	Limit	Margin	Remark
	[MHz]	[dBuV/m]	[dB]	[dBuV/m]	[dBuV/m]	[dB]	
1	17191.774	25.59	19.20	44.79	54.00	-9.21	Vertical
2	17733.7167	25.38	19.28	44.66	54.00	-9.34	Vertical

- Note: 1. Measurement = Reading Level + Correct Factor.
2. If Peak Result complies with AV limit, AV Result is deemed to comply with AV limit.
3. Peak detector: RBW: 1 MHz, VBW: 3 MHz.
4. Average detector: RBW: 1 MHz, VBW: 1/T MHz(refer to clause 7.1.).
5. For above 3GHz part, filter losses were only considered in the spurious frequency bands and the authorized band was not corrected for HPF losses.
6. Only the worst case emission was recorded, if it complies with the limit, the other emissions deemed to comply with the limit.



Test Mode	Channel	Polarization	Verdict
11N HT20	LCH	Horizontal	PASS



PK Result:

No.	Frequency	Reading Level	Correct Factor	Result	Limit	Margin	Remark
	[MHz]	[dBuV/m]	[dB]	[dBuV/m]	[dBuV/m]	[dB]	
1	8432.5541	39.27	8.15	47.42	74.00	-26.58	Horizontal
2	11067.2584	36.17	12.36	48.53	74.00	-25.47	Horizontal
3	12014.2518	35.37	12.82	48.19	74.00	-25.81	Horizontal
4	14335.792	35.58	16.15	51.73	74.00	-22.27	Horizontal
5	16134.1418	36.04	17.23	53.27	74.00	-20.73	Horizontal
6	17133.6417	36.05	18.76	54.81	74.00	-19.19	Horizontal
7	17656.8321	34.78	19.57	54.35	74.00	-19.65	Horizontal

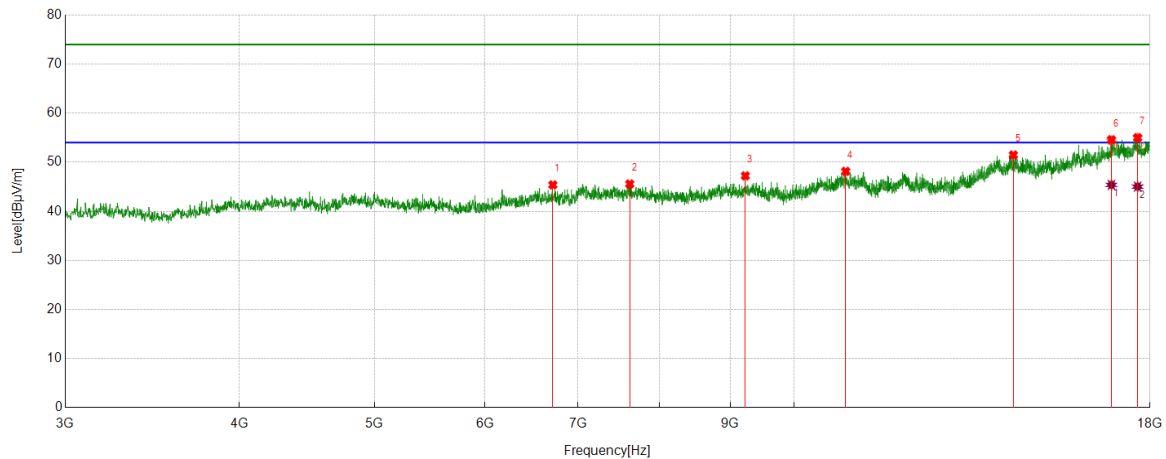
AV Result:

No.	Frequency	Reading Level	Correct Factor	Result	Limit	Margin	Remark
	[MHz]	[dBuV/m]	[dB]	[dBuV/m]	[dBuV/m]	[dB]	
1	17133.6417	26.10	18.76	44.86	54.00	-9.14	Horizontal
2	17656.8321	25.57	19.57	45.14	54.00	-8.86	Horizontal

- Note: 1. Measurement = Reading Level + Correct Factor.
2. If Peak Result complies with AV limit, AV Result is deemed to comply with AV limit.
3. Peak detector: RBW: 1 MHz, VBW: 3 MHz.
4. Average detector: RBW: 1 MHz, VBW: 1/T MHz(refer to clause 7.1.).
5. For above 3GHz part, filter losses were only considered in the spurious frequency bands and the authorized band was not corrected for HPF losses.
6. Only the worst case emission was recorded, if it complies with the limit, the other emissions deemed to comply with the limit.



Test Mode	Channel	Polarization	Verdict
11N HT20	LCH	Vertical	PASS



PK Result:

No.	Frequency	Reading Level	Correct Factor	Result	Limit	Margin	Remark
	[MHz]	[dBuV/m]	[dB]	[dBuV/m]	[dBuV/m]	[dB]	
1	6712.9641	36.51	8.88	45.39	74.00	-28.61	Vertical
2	7622.4528	37.11	8.46	45.57	74.00	-28.43	Vertical
3	9225.7782	37.86	9.37	47.23	74.00	-26.77	Vertical
4	10889.1111	35.88	12.26	48.14	74.00	-25.86	Vertical
5	14363.9205	35.80	15.68	51.48	74.00	-22.52	Vertical
6	16889.8612	36.10	18.48	54.58	74.00	-19.42	Vertical
7	17636.2045	35.62	19.38	55.00	74.00	-19.00	Vertical

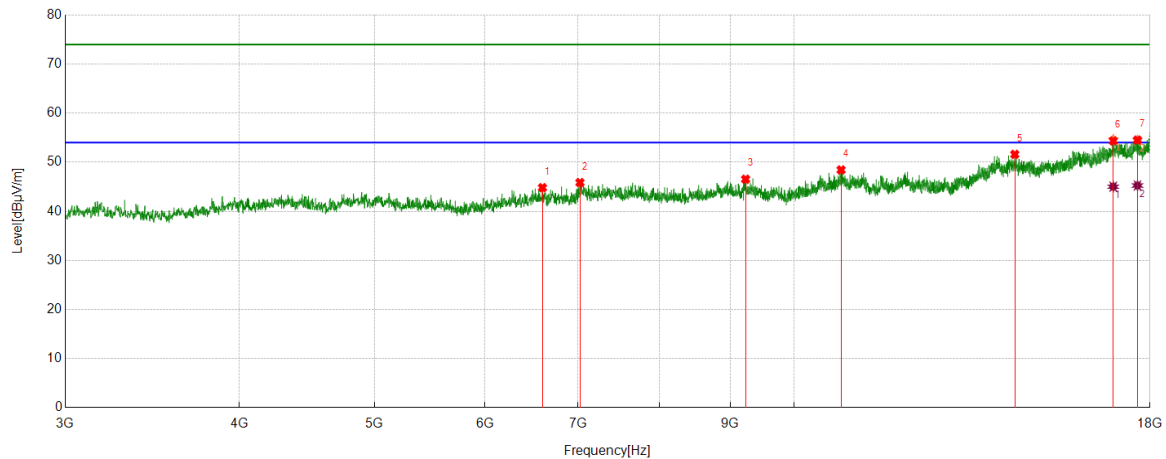
AV Result:

No.	Frequency	Reading Level	Correct Factor	Result	Limit	Margin	Remark
	[MHz]	[dBuV/m]	[dB]	[dBuV/m]	[dBuV/m]	[dB]	
1	16889.8612	26.91	18.48	45.39	54.00	-8.61	Vertical
2	17636.2045	25.65	19.38	45.03	54.00	-8.97	Vertical

- Note: 1. Measurement = Reading Level + Correct Factor.
2. If Peak Result complies with AV limit, AV Result is deemed to comply with AV limit.
3. Peak detector: RBW: 1 MHz, VBW: 3 MHz.
4. Average detector: RBW: 1 MHz, VBW: 1/T MHz(refer to clause 7.1.).
5. For above 3GHz part, filter losses were only considered in the spurious frequency bands and the authorized band was not corrected for HPF losses.
6. Only the worst case emission was recorded, if it complies with the limit, the other emissions deemed to comply with the limit.



Test Mode	Channel	Polarization	Verdict
11N HT20	MCH	Horizontal	PASS



PK Result:

No.	Frequency	Reading Level	Correct Factor	Result	Limit	Margin	Remark
	[MHz]	[dBuV/m]	[dB]	[dBuV/m]	[dBuV/m]	[dB]	
1	6598.5748	36.10	8.72	44.82	74.00	-29.18	Horizontal
2	7020.5026	36.58	9.28	45.86	74.00	-28.14	Horizontal
3	9229.5287	37.12	9.42	46.54	74.00	-27.46	Horizontal
4	10806.6008	36.35	12.09	48.44	74.00	-25.56	Horizontal
5	14397.6747	35.89	15.71	51.60	74.00	-22.40	Horizontal
6	16940.4926	34.96	19.39	54.35	74.00	-19.65	Horizontal
7	17632.4541	35.05	19.46	54.51	74.00	-19.49	Horizontal

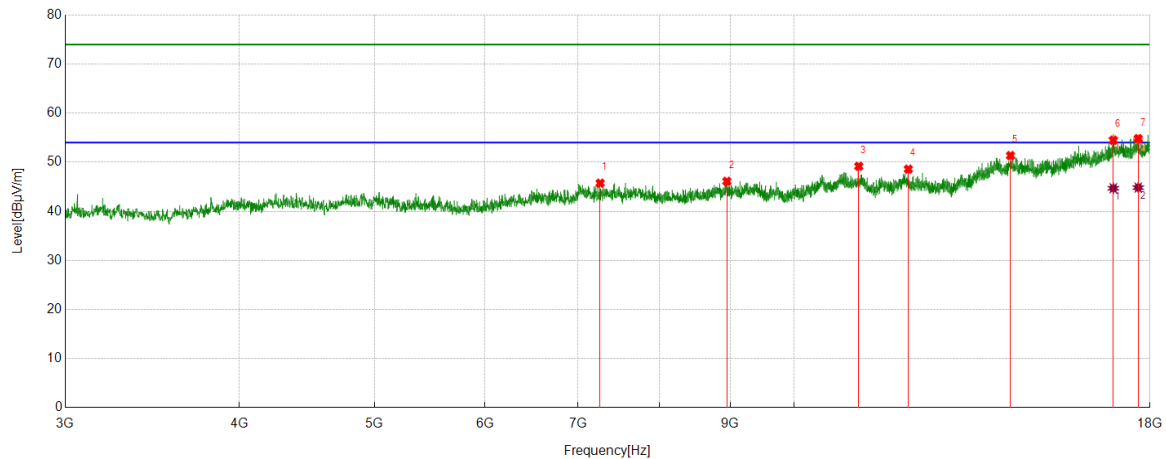
AV Result:

No.	Frequency	Reading Level	Correct Factor	Result	Limit	Margin	Remark
	[MHz]	[dBuV/m]	[dB]	[dBuV/m]	[dBuV/m]	[dB]	
1	16940.4926	25.63	19.39	45.02	54.00	-8.98	Horizontal
2	17632.4541	25.80	19.46	45.26	54.00	-8.74	Horizontal

- Note: 1. Measurement = Reading Level + Correct Factor.
2. If Peak Result complies with AV limit, AV Result is deemed to comply with AV limit.
3. Peak detector: RBW: 1 MHz, VBW: 3 MHz.
4. Average detector: RBW: 1 MHz, VBW: 1/T MHz(refer to clause 7.1.).
5. For above 3GHz part, filter losses were only considered in the spurious frequency bands and the authorized band was not corrected for HPF losses.
6. Only the worst case emission was recorded, if it complies with the limit, the other emissions deemed to comply with the limit.



Test Mode	Channel	Polarization	Verdict
11N HT20	MCH	Vertical	PASS



PK Result:

No.	Frequency	Reading Level	Correct Factor	Result	Limit	Margin	Remark
	[MHz]	[dBuV/m]	[dB]	[dBuV/m]	[dBuV/m]	[dB]	
1	7258.6573	37.07	8.67	45.74	74.00	-28.26	Vertical
2	8948.2435	36.60	9.51	46.11	74.00	-27.89	Vertical
3	11127.2659	37.01	12.17	49.18	74.00	-24.82	Vertical
4	12076.1345	35.75	12.84	48.59	74.00	-25.41	Vertical
5	14296.4121	35.32	16.04	51.36	74.00	-22.64	Vertical
6	16942.3678	35.07	19.41	54.48	74.00	-19.52	Vertical
7	17653.0816	35.31	19.50	54.81	74.00	-19.19	Vertical

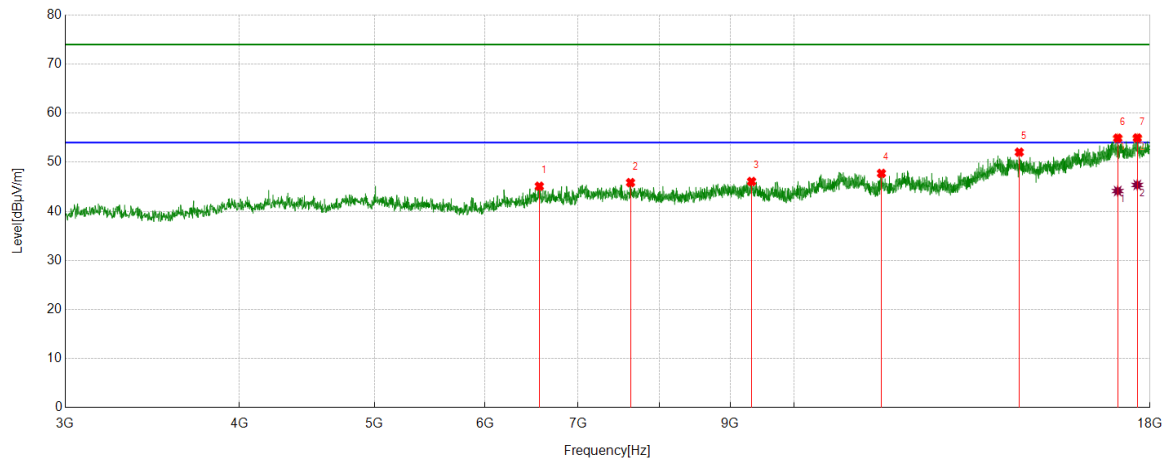
AV Result:

No.	Frequency	Reading Level	Correct Factor	Result	Limit	Margin	Remark
	[MHz]	[dBuV/m]	[dB]	[dBuV/m]	[dBuV/m]	[dB]	
1	16942.3678	25.29	19.41	44.70	54.00	-9.30	Vertical
2	17653.0816	25.33	19.50	44.83	54.00	-9.17	Vertical

- Note: 1. Measurement = Reading Level + Correct Factor.
2. If Peak Result complies with AV limit, AV Result is deemed to comply with AV limit.
3. Peak detector: RBW: 1 MHz, VBW: 3 MHz.
4. Average detector: RBW: 1 MHz, VBW: 1/T MHz(refer to clause 7.1.).
5. For above 3GHz part, filter losses were only considered in the spurious frequency bands and the authorized band was not corrected for HPF losses.
6. Only the worst case emission was recorded, if it complies with the limit, the other emissions deemed to comply with the limit.



Test Mode	Channel	Polarization	Verdict
11N HT20	HCH	Horizontal	PASS



PK Result:

No.	Frequency	Reading Level	Correct Factor	Result	Limit	Margin	Remark
	[MHz]	[dBuV/m]	[dB]	[dBuV/m]	[dBuV/m]	[dB]	
1	6564.8206	36.69	8.42	45.11	74.00	-28.89	Horizontal
2	7631.829	37.44	8.41	45.85	74.00	-28.15	Horizontal
3	9321.4152	36.73	9.35	46.08	74.00	-27.92	Horizontal
4	11551.0689	36.02	11.71	47.73	74.00	-26.27	Horizontal
5	14504.5631	35.92	16.13	52.05	74.00	-21.95	Horizontal
6	17066.1333	35.04	19.87	54.91	74.00	-19.09	Horizontal
7	17626.8284	35.52	19.43	54.95	74.00	-19.05	Horizontal

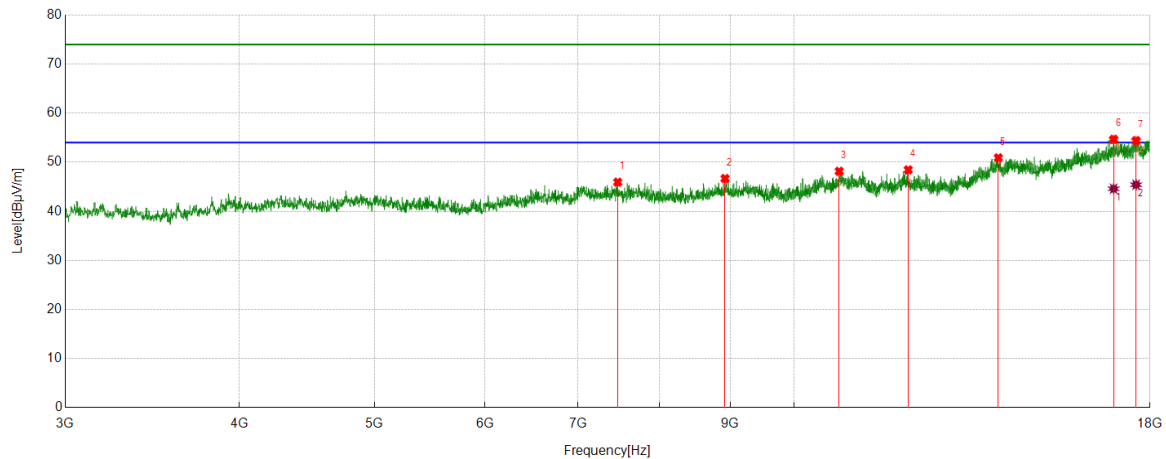
AV Result:

No.	Frequency	Reading Level	Correct Factor	Result	Limit	Margin	Remark
	[MHz]	[dBuV/m]	[dB]	[dBuV/m]	[dBuV/m]	[dB]	
1	17066.1333	24.27	19.87	44.14	54.00	-9.86	Horizontal
2	17626.8284	25.94	19.43	45.37	54.00	-8.63	Horizontal

- Note: 1. Measurement = Reading Level + Correct Factor.
2. If Peak Result complies with AV limit, AV Result is deemed to comply with AV limit.
3. Peak detector: RBW: 1 MHz, VBW: 3 MHz.
4. Average detector: RBW: 1 MHz, VBW: 1/T MHz(refer to clause 7.1.).
5. For above 3GHz part, filter losses were only considered in the spurious frequency bands and the authorized band was not corrected for HPF losses.
6. Only the worst case emission was recorded, if it complies with the limit, the other emissions deemed to comply with the limit.



Test Mode	Channel	Polarization	Verdict
11N HT20	HCH	Vertical	PASS



PK Result:

No.	Frequency	Reading Level	Correct Factor	Result	Limit	Margin	Remark
	[MHz]	[dBuV/m]	[dB]	[dBuV/m]	[dBuV/m]	[dB]	
1	7472.4341	37.27	8.66	45.93	74.00	-28.07	Vertical
2	8921.9902	37.35	9.33	46.68	74.00	-27.32	Vertical
3	10772.8466	36.21	11.95	48.16	74.00	-25.84	Vertical
4	12074.2593	35.64	12.81	48.45	74.00	-25.55	Vertical
5	14011.3764	35.04	15.86	50.90	74.00	-23.10	Vertical
6	16951.744	35.12	19.54	54.66	74.00	-19.34	Vertical
7	17591.1989	34.67	19.73	54.40	74.00	-19.60	Vertical

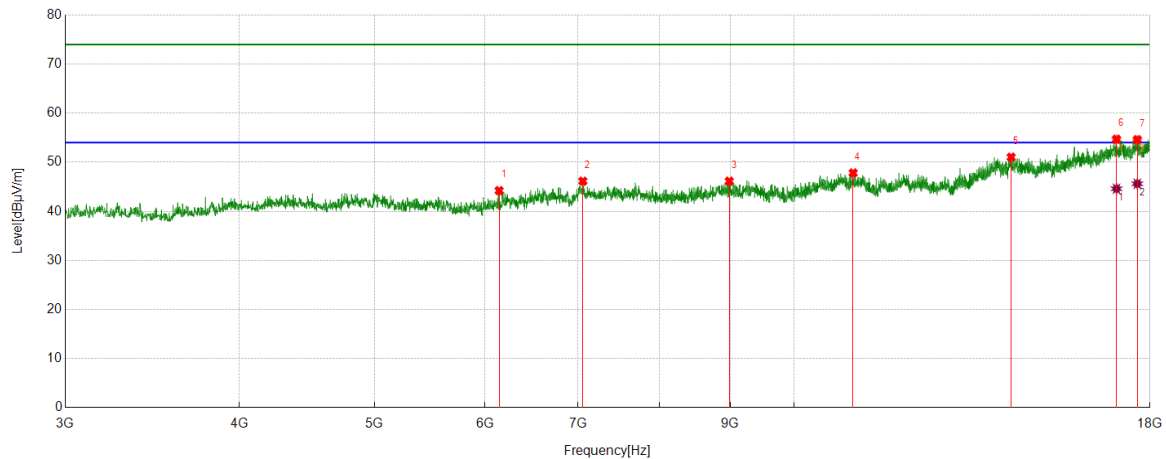
AV Result:

No.	Frequency	Reading Level	Correct Factor	Result	Limit	Margin	Remark
	[MHz]	[dBuV/m]	[dB]	[dBuV/m]	[dBuV/m]	[dB]	
1	16951.744	25.06	19.54	44.60	54.00	-9.40	Vertical
2	17591.1989	25.69	19.73	45.42	54.00	-8.58	Vertical

- Note: 1. Measurement = Reading Level + Correct Factor.
2. If Peak Result complies with AV limit, AV Result is deemed to comply with AV limit.
3. Peak detector: RBW: 1 MHz, VBW: 3 MHz.
4. Average detector: RBW: 1 MHz, VBW: 1/T MHz(refer to clause 7.1.).
5. For above 3GHz part, filter losses were only considered in the spurious frequency bands and the authorized band was not corrected for HPF losses.
6. Only the worst case emission was recorded, if it complies with the limit, the other emissions deemed to comply with the limit.



Test Mode	Channel	Polarization	Verdict
11N HT40	LCH	Horizontal	PASS



PK Result:

No.	Frequency	Reading Level	Correct Factor	Result	Limit	Margin	Remark
	[MHz]	[dBuV/m]	[dB]	[dBuV/m]	[dBuV/m]	[dB]	
1	6142.8929	38.57	5.65	44.22	74.00	-29.78	Horizontal
2	7054.2568	36.89	9.25	46.14	74.00	-27.86	Horizontal
3	8983.873	36.74	9.41	46.15	74.00	-27.85	Horizontal
4	11024.128	35.33	12.49	47.82	74.00	-26.18	Horizontal
5	14311.4139	35.13	15.90	51.03	74.00	-22.97	Horizontal
6	17032.379	35.33	19.36	54.69	74.00	-19.31	Horizontal
7	17626.8284	35.16	19.43	54.59	74.00	-19.41	Horizontal

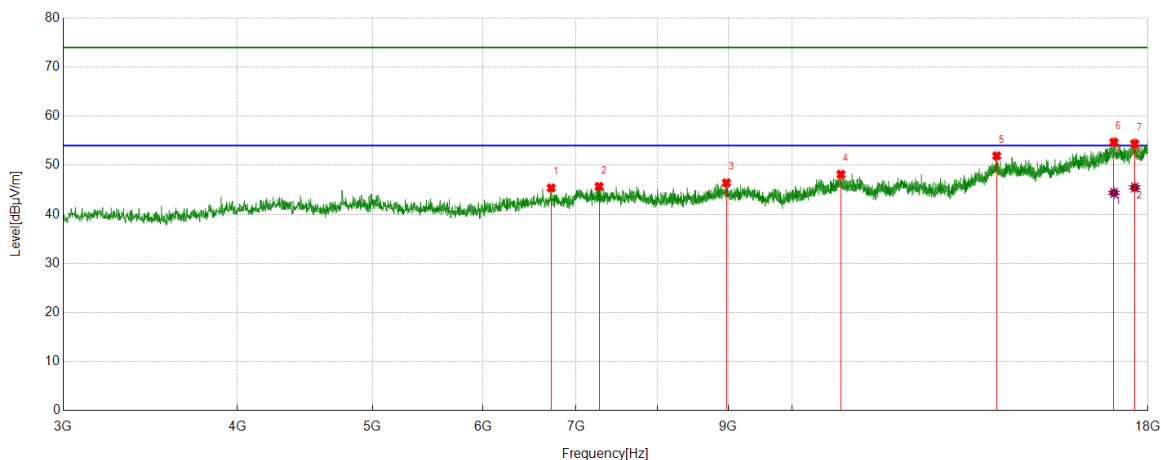
AV Result:

No.	Frequency	Reading Level	Correct Factor	Result	Limit	Margin	Remark
	[MHz]	[dBuV/m]	[dB]	[dBuV/m]	[dBuV/m]	[dB]	
1	17032.379	25.24	19.36	44.60	54.00	-9.40	Horizontal
2	17626.8284	26.19	19.43	45.62	54.00	-8.38	Horizontal

- Note: 1. Measurement = Reading Level + Correct Factor.
2. If Peak Result complies with AV limit, AV Result is deemed to comply with AV limit.
3. Peak detector: RBW: 1 MHz, VBW: 3 MHz.
4. Average detector: RBW: 1 MHz, VBW: 1/T MHz(refer to clause 7.1.).
5. For above 3GHz part, filter losses were only considered in the spurious frequency bands and the authorized band was not corrected for HPF losses.
6. Only the worst case emission was recorded, if it complies with the limit, the other emissions deemed to comply with the limit.



Test Mode	Channel	Polarization	Verdict
11N HT40	LCH	Vertical	PASS



PK Result:

No.	Frequency	Reading Level	Correct Factor	Result	Limit	Margin	Remark
	[MHz]	[dBuV/m]	[dB]	[dBuV/m]	[dBuV/m]	[dB]	
1	6716.7146	36.39	8.98	45.37	74.00	-28.63	Vertical
2	7269.9087	37.06	8.62	45.68	74.00	-28.32	Vertical
3	8970.7463	36.97	9.45	46.42	74.00	-27.58	Vertical
4	10840.355	36.05	12.10	48.15	74.00	-25.85	Vertical
5	14020.7526	36.03	15.88	51.91	74.00	-22.09	Vertical
6	17015.5019	35.68	19.01	54.69	74.00	-19.31	Vertical
7	17609.9512	34.73	19.65	54.38	74.00	-19.62	Vertical

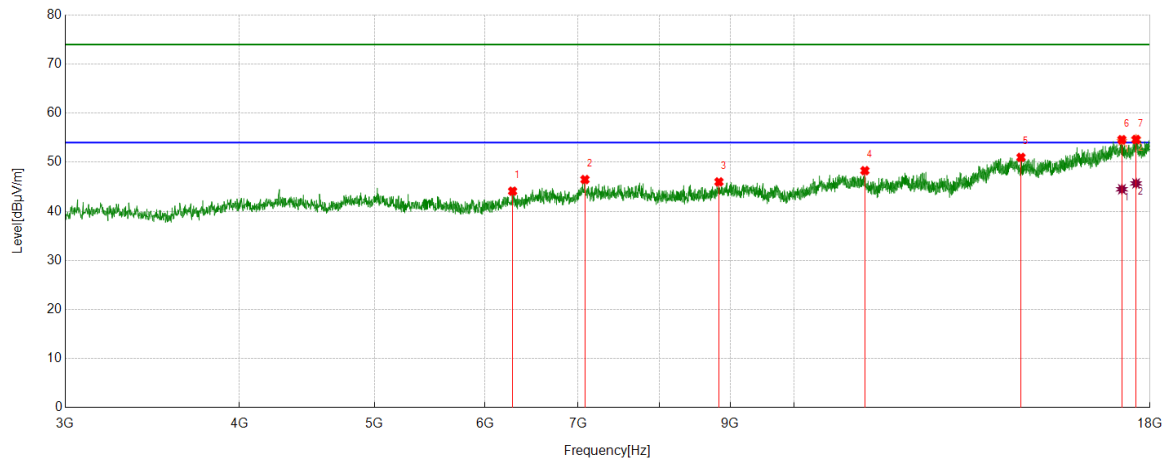
AV Result:

No.	Frequency	Reading Level	Correct Factor	Result	Limit	Margin	Remark
	[MHz]	[dBuV/m]	[dB]	[dBuV/m]	[dBuV/m]	[dB]	
1	17015.5019	25.36	19.01	44.37	54.00	-9.63	Vertical
2	17609.9512	25.81	19.65	45.46	54.00	-8.54	Vertical

- Note: 1. Measurement = Reading Level + Correct Factor.
2. If Peak Result complies with AV limit, AV Result is deemed to comply with AV limit.
3. Peak detector: RBW: 1 MHz, VBW: 3 MHz.
4. Average detector: RBW: 1 MHz, VBW: 1/T MHz(refer to clause 7.1.).
5. For above 3GHz part, filter losses were only considered in the spurious frequency bands and the authorized band was not corrected for HPF losses.
6. Only the worst case emission was recorded, if it complies with the limit, the other emissions deemed to comply with the limit.



Test Mode	Channel	Polarization	Verdict
11N HT40	MCH	Horizontal	PASS



PK Result:

No.	Frequency	Reading Level	Correct Factor	Result	Limit	Margin	Remark
	[MHz]	[dBuV/m]	[dB]	[dBuV/m]	[dBuV/m]	[dB]	
1	6281.6602	37.46	6.64	44.10	74.00	-29.90	Horizontal
2	7078.6348	37.05	9.42	46.47	74.00	-27.53	Horizontal
3	8831.979	36.78	9.22	46.00	74.00	-28.00	Horizontal
4	11239.78	36.54	11.75	48.29	74.00	-25.71	Horizontal
5	14545.8182	34.83	16.16	50.99	74.00	-23.01	Horizontal
6	17184.273	35.62	18.97	54.59	74.00	-19.41	Horizontal
7	17591.1989	34.90	19.73	54.63	74.00	-19.37	Horizontal

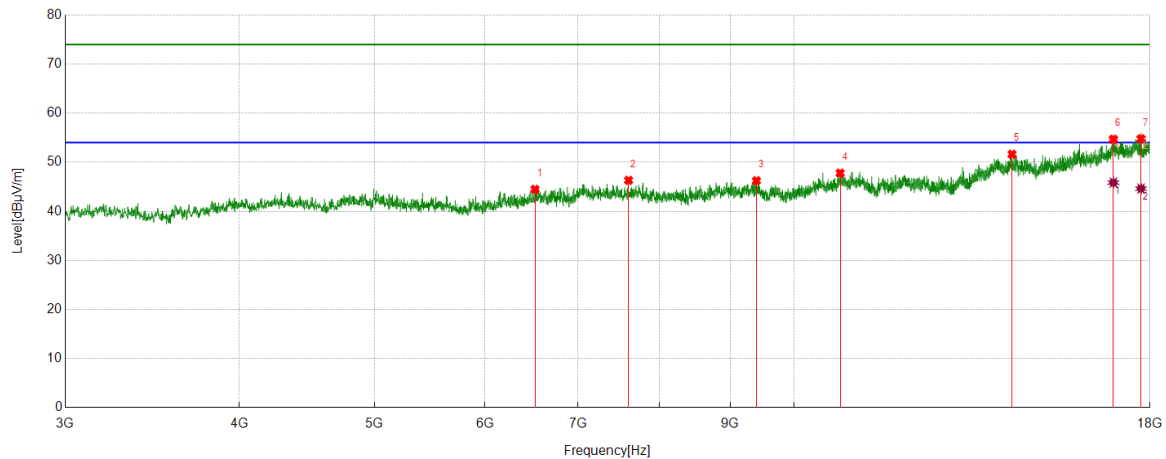
AV Result:

No.	Frequency	Reading Level	Correct Factor	Result	Limit	Margin	Remark
	[MHz]	[dBuV/m]	[dB]	[dBuV/m]	[dBuV/m]	[dB]	
1	17184.273	25.53	18.97	44.50	54.00	-9.50	Horizontal
2	17591.1989	25.96	19.73	45.69	54.00	-8.31	Horizontal

- Note: 1. Measurement = Reading Level + Correct Factor.
2. If Peak Result complies with AV limit, AV Result is deemed to comply with AV limit.
3. Peak detector: RBW: 1 MHz, VBW: 3 MHz.
4. Average detector: RBW: 1 MHz, VBW: 1/T MHz(refer to clause 7.1.).
5. For above 3GHz part, filter losses were only considered in the spurious frequency bands and the authorized band was not corrected for HPF losses.
6. Only the worst case emission was recorded, if it complies with the limit, the other emissions deemed to comply with the limit.



Test Mode	Channel	Polarization	Verdict
11N HT40	MCH	Vertical	PASS



PK Result:

No.	Frequency	Reading Level	Correct Factor	Result	Limit	Margin	Remark
	[MHz]	[dBuV/m]	[dB]	[dBuV/m]	[dBuV/m]	[dB]	
1	6517.9397	35.95	8.53	44.48	74.00	-29.52	Vertical
2	7607.4509	37.68	8.64	46.32	74.00	-27.68	Vertical
3	9396.4246	36.76	9.47	46.23	74.00	-27.77	Vertical
4	10789.7237	35.75	12.03	47.78	74.00	-26.22	Vertical
5	14332.0415	35.56	16.07	51.63	74.00	-22.37	Vertical
6	16944.243	35.25	19.43	54.68	74.00	-19.32	Vertical
7	17735.5919	35.50	19.26	54.76	74.00	-19.24	Vertical

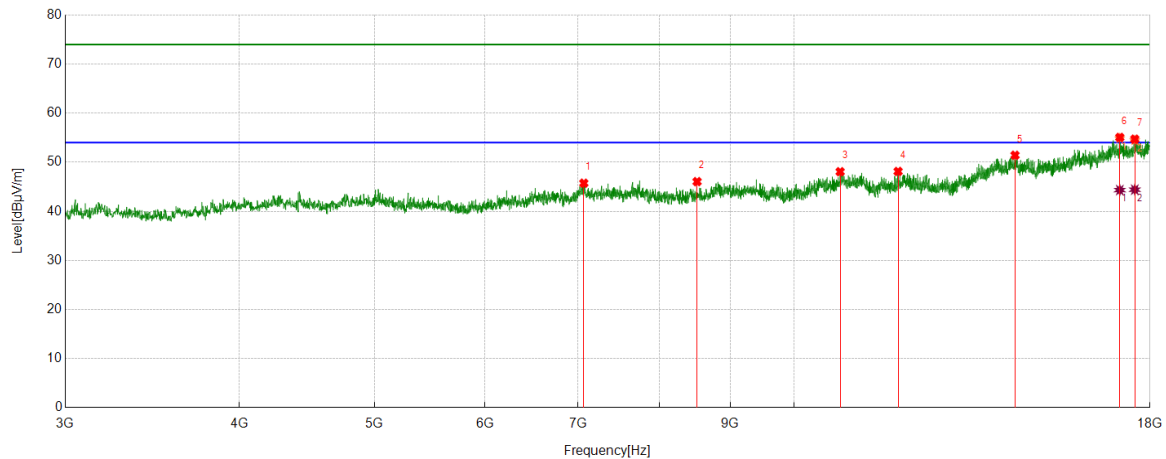
AV Result:

No.	Frequency	Reading Level	Correct Factor	Result	Limit	Margin	Remark
	[MHz]	[dBuV/m]	[dB]	[dBuV/m]	[dBuV/m]	[dB]	
1	16944.243	26.42	19.43	45.85	54.00	-8.15	Vertical
2	17735.5919	25.37	19.26	44.63	54.00	-9.37	Vertical

- Note: 1. Measurement = Reading Level + Correct Factor.
2. If Peak Result complies with AV limit, AV Result is deemed to comply with AV limit.
3. Peak detector: RBW: 1 MHz, VBW: 3 MHz.
4. Average detector: RBW: 1 MHz, VBW: 1/T MHz(refer to clause 7.1.).
5. For above 3GHz part, filter losses were only considered in the spurious frequency bands and the authorized band was not corrected for HPF losses.
6. Only the worst case emission was recorded, if it complies with the limit, the other emissions deemed to comply with the limit.



Test Mode	Channel	Polarization	Verdict
11N HT40	HCH	Horizontal	PASS



PK Result:

No.	Frequency	Reading Level	Correct Factor	Result	Limit	Margin	Remark
	[MHz]	[dBuV/m]	[dB]	[dBuV/m]	[dBuV/m]	[dB]	
1	7065.5082	36.54	9.19	45.73	74.00	-28.27	Horizontal
2	8518.8149	38.02	8.03	46.05	74.00	-27.95	Horizontal
3	10789.7237	36.04	12.03	48.07	74.00	-25.93	Horizontal
4	11873.6092	36.02	12.11	48.13	74.00	-25.87	Horizontal
5	14403.3004	35.71	15.71	51.42	74.00	-22.58	Horizontal
6	17124.2655	36.41	18.65	55.06	74.00	-18.94	Horizontal
7	17553.6942	35.45	19.25	54.70	74.00	-19.30	Horizontal

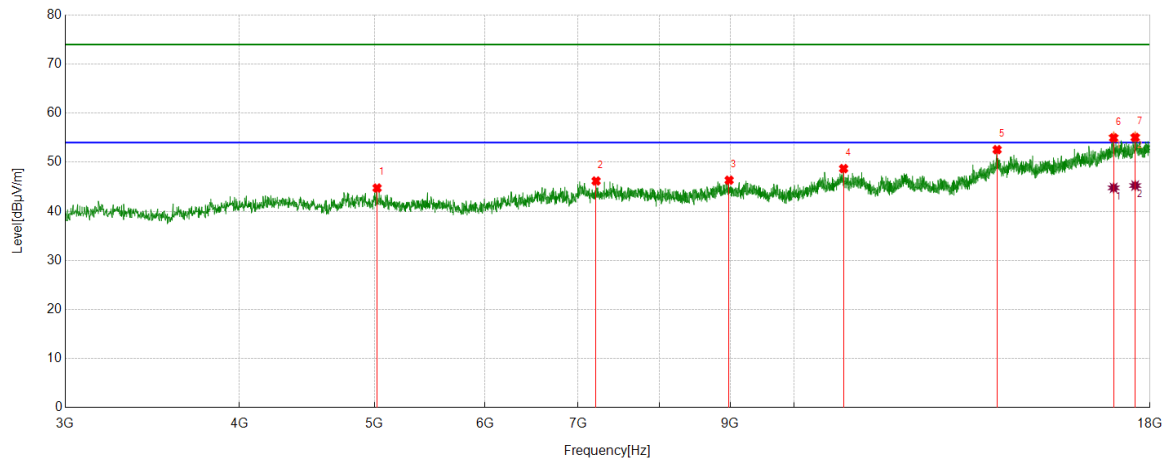
AV Result:

No.	Frequency	Reading Level	Correct Factor	Result	Limit	Margin	Remark
	[MHz]	[dBuV/m]	[dB]	[dBuV/m]	[dBuV/m]	[dB]	
1	17124.2655	25.68	18.65	44.33	54.00	-9.67	Horizontal
2	17553.6942	25.16	19.25	44.41	54.00	-9.59	Horizontal

- Note: 1. Measurement = Reading Level + Correct Factor.
2. If Peak Result complies with AV limit, AV Result is deemed to comply with AV limit.
3. Peak detector: RBW: 1 MHz, VBW: 3 MHz.
4. Average detector: RBW: 1 MHz, VBW: 1/T MHz(refer to clause 7.1.).
5. For above 3GHz part, filter losses were only considered in the spurious frequency bands and the authorized band was not corrected for HPF losses.
6. Only the worst case emission was recorded, if it complies with the limit, the other emissions deemed to comply with the limit.



Test Mode	Channel	Polarization	Verdict
11N HT40	HCH	Vertical	PASS



PK Result:

No.	Frequency	Reading Level	Correct Factor	Result	Limit	Margin	Remark
	[MHz]	[dBuV/m]	[dB]	[dBuV/m]	[dBuV/m]	[dB]	
1	5021.5027	39.29	5.46	44.75	74.00	-29.25	Vertical
2	7209.9012	37.38	8.80	46.18	74.00	-27.82	Vertical
3	8981.9978	36.91	9.43	46.34	74.00	-27.66	Vertical
4	10851.6065	36.54	12.16	48.70	74.00	-25.30	Vertical
5	13983.2479	36.59	15.97	52.56	74.00	-21.44	Vertical
6	16951.744	35.42	19.54	54.96	74.00	-19.04	Vertical
7	17564.9456	35.27	19.77	55.04	74.00	-18.96	Vertical

AV Result:

No.	Frequency	Reading Level	Correct Factor	Result	Limit	Margin	Remark
	[MHz]	[dBuV/m]	[dB]	[dBuV/m]	[dBuV/m]	[dB]	
1	16951.744	25.24	19.54	44.78	54.00	-9.22	Vertical
2	17564.9456	25.48	19.77	45.25	54.00	-8.75	Vertical

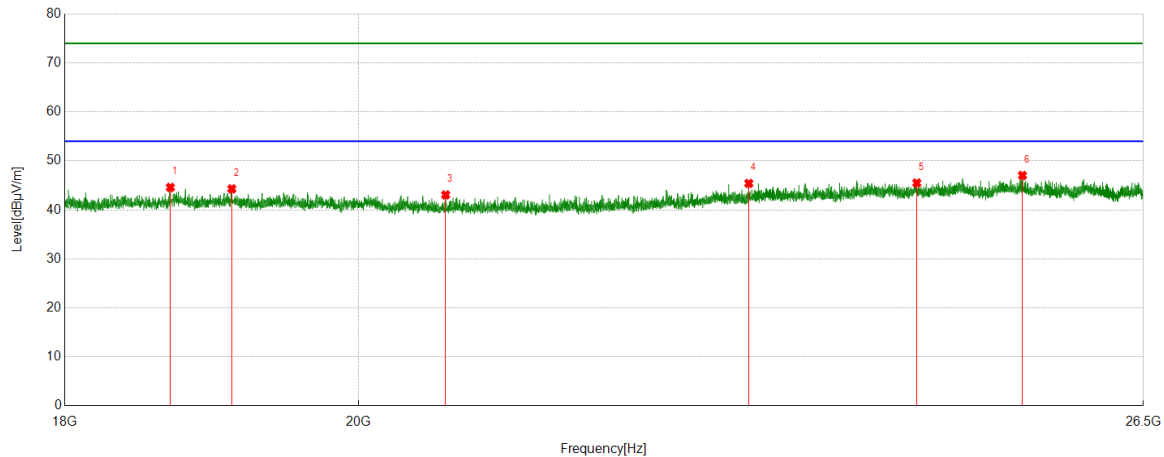
- Note: 1. Measurement = Reading Level + Correct Factor.
2. If Peak Result complies with AV limit, AV Result is deemed to comply with AV limit.
3. Peak detector: RBW: 1 MHz, VBW: 3 MHz.
4. Average detector: RBW: 1 MHz, VBW: 1/T MHz(refer to clause 7.1.).
5. For above 3GHz part, filter losses were only considered in the spurious frequency bands and the authorized band was not corrected for HPF losses.
6. Only the worst case emission was recorded, if it complies with the limit, the other emissions deemed to comply with the limit.



Part 3: 18GHz~26.5GHz

SPURIOUS EMISSIONS 18GHz TO 26.5GHz (WORST-CASE CONFIGURATION)

Test Mode	Channel	Polarization	Verdict
11B	MCH	Horizontal	PASS

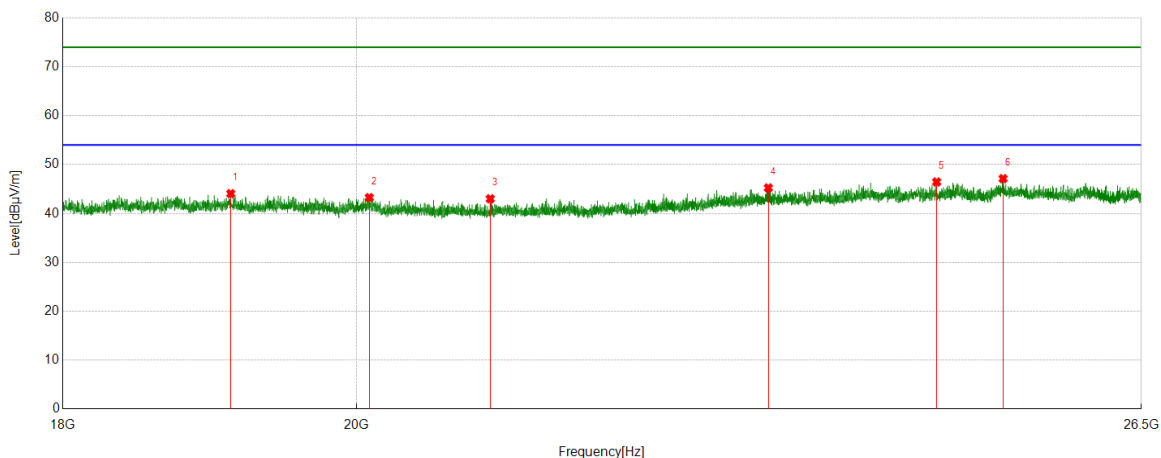


No.	Frequency	Reading Level	Correct Factor	Result	Limit	Margin	Remark
	[MHz]	[dBuV/m]	[dB]	[dBuV/m]	[dBuV/m]	[dB]	
1	18695.3695	50.88	-6.29	44.59	74.00	-29.41	Peak
2	19111.9112	50.19	-5.89	44.30	74.00	-29.70	Peak
3	20635.2635	48.89	-5.82	43.07	74.00	-30.93	Peak
4	23004.4504	48.94	-3.53	45.41	74.00	-28.59	Peak
5	24432.5933	48.45	-2.95	45.50	74.00	-28.50	Peak
6	25376.1876	50.31	-3.27	47.04	74.00	-26.96	Peak

Note: 1. If Peak Result complies with AV limit, AV Result is deemed to comply with AV limit.
2. Test setup: RBW: 1 MHz, VBW: 3 MHz, Sweep time: auto.
3. Measurement = Reading Level + Correct Factor.
4. Only the worst case emission was recorded, if it complies with the limit, the other emissions deemed to comply with the limit.



Test Mode	Channel	Polarization	Verdict
11B	MCH	Vertical	PASS



No.	Frequency	Reading Level	Correct Factor	Result	Limit	Margin	Remark
	[MHz]	[dBuV/m]	[dB]	[dBuV/m]	[dBuV/m]	[dB]	
1	19118.7119	49.93	-5.88	44.05	74.00	-29.95	Peak
2	20092.0592	48.39	-5.15	43.24	74.00	-30.76	Peak
3	20982.9483	49.01	-6.01	43.00	74.00	-31.00	Peak
4	23182.9683	48.64	-3.41	45.23	74.00	-28.77	Peak
5	24624.7125	49.56	-3.12	46.44	74.00	-27.56	Peak
6	25218.9219	50.50	-3.38	47.12	74.00	-26.88	Peak

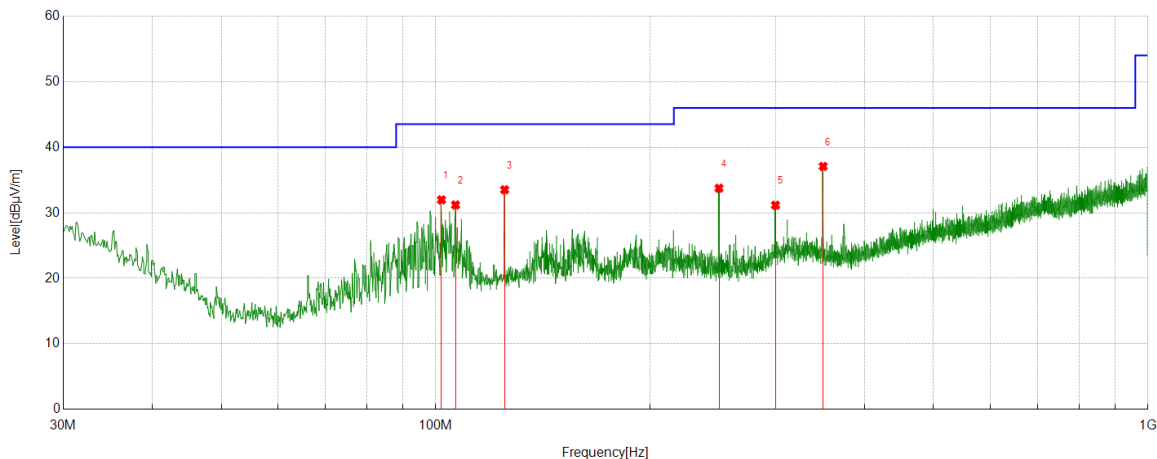
- Note: 1. If Peak Result complies with AV limit, AV Result is deemed to comply with AV limit.
2. Test setup: RBW: 1 MHz, VBW: 3 MHz, Sweep time: auto.
3. Measurement = Reading Level + Correct Factor.
4. Only the worst case emission was recorded, if it complies with the limit, the other emissions deemed to comply with the limit.



Part 4: 30MHz~1GHz

SPURIOUS EMISSIONS 30M TO 1GHz (WORST-CASE CONFIGURATION)

Test Mode	Channel	Polarization	Verdict
11B	MCH	Horizontal	PASS

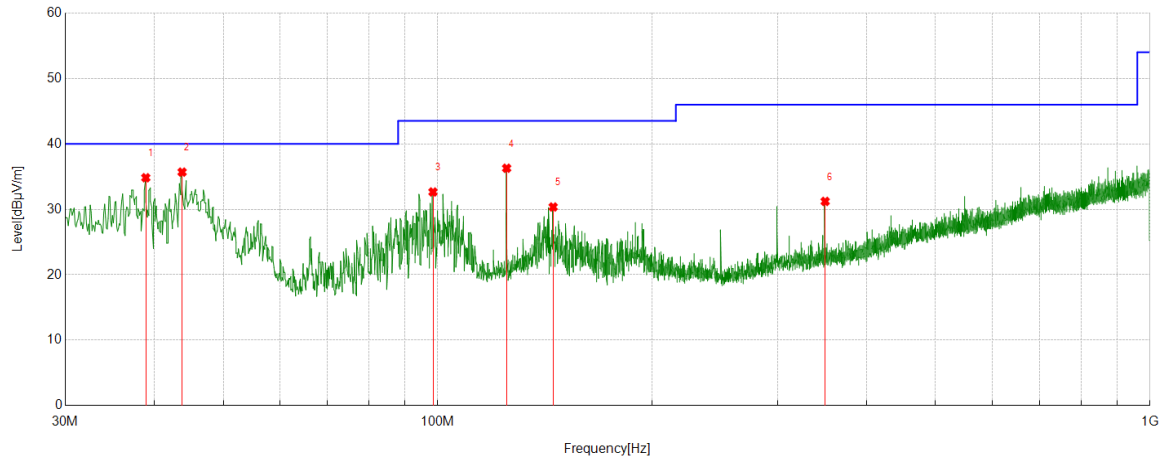


No.	Frequency	Reading Level	Correct Factor	Result	Limit	Margin	Remark
	[MHz]	[dBuV/m]	[dB]	[dBuV/m]	[dBuV/m]	[dB]	
1	101.8842	14.42	17.55	31.97	43.50	-11.53	Peak
2	106.6377	12.55	18.64	31.19	43.50	-12.31	Peak
3	124.9725	12.63	20.88	33.51	43.50	-9.99	Peak
4	249.921	14.28	19.46	33.74	46.00	-12.26	Peak
5	299.978	9.76	21.39	31.15	46.00	-14.85	Peak
6	349.938	14.84	22.23	37.07	46.00	-8.93	Peak

Note: 1. If Peak Result complies with QP limit, QP Result is deemed to comply with QP limit.
2. Test setup: RBW: 120 kHz, VBW: 300 kHz, Sweep time: auto.
3. Measurement = Reading Level + Correct Factor.



Test Mode	Channel	Polarization	Verdict
11B	MCH	Vertical	PASS



No.	Frequency	Reading Level	Correct Factor	Result	Limit	Margin	Remark
	[MHz]	[dBuV/m]	[dB]	[dBuV/m]	[dBuV/m]	[dB]	
1	38.9249	13.19	21.64	34.83	40.00	-5.17	Peak
2	43.7754	17.17	18.52	35.69	40.00	-4.31	Peak
3	98.4888	15.89	16.76	32.65	43.50	-10.85	Peak
4	124.9725	15.40	20.88	36.28	43.50	-7.22	Peak
5	145.2475	10.25	20.11	30.36	43.50	-13.14	Peak
6	349.938	8.98	22.23	31.21	46.00	-14.79	Peak

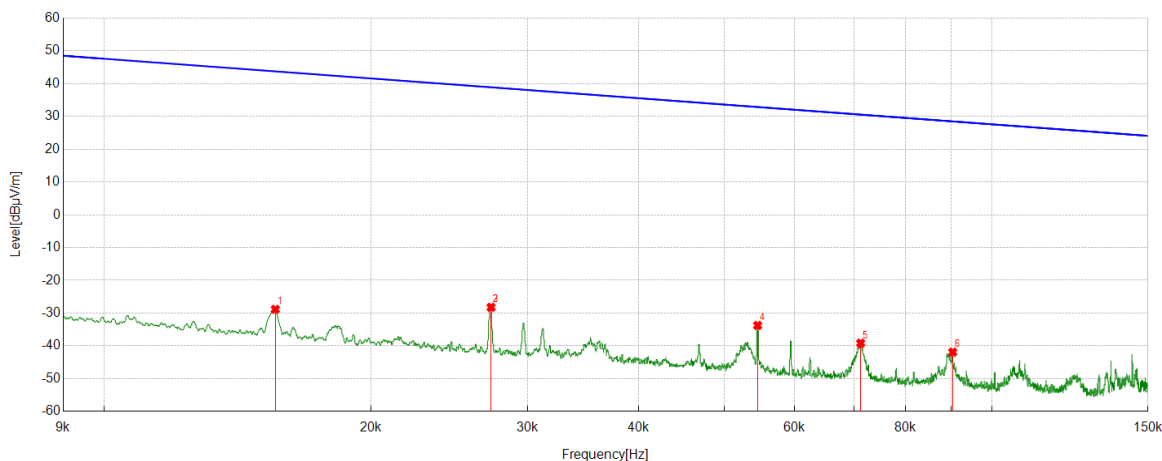
Note: 1. If Peak Result complies with QP limit, QP Result is deemed to comply with QP limit.
2. Test setup: RBW: 120 kHz, VBW: 300 kHz, Sweep time: auto.
3. Measurement = Reading Level + Correct Factor.



Part 5: 9kHz~30MHz

SPURIOUS EMISSIONS Below 30MHz (WORST CASE CONFIGURATION-FACE ON)

Test Mode	Channel	Frequency Range	Verdict
11B	MCH	9kHz~150kHz	PASS

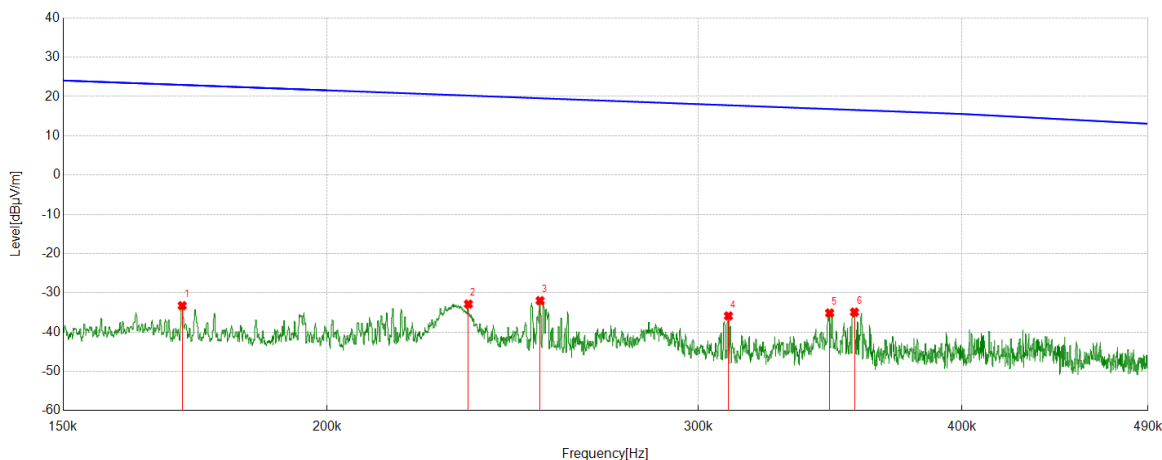


No.	Frequency	Reading Level	Correct Factor	Result	Limit	Margin	Remark
	[MHz]	[dBuV/m]	[dB]	[dBuV/m]	[dBuV/m]	[dB]	
1	0.0156	33.08	-61.93	-28.85	43.73	-72.58	Peak
2	0.0273	33.60	-61.82	-28.22	38.89	-67.11	Peak
3	0.0273	33.60	-61.82	-28.22	38.89	-67.11	Peak
4	0.0545	28.06	-61.81	-33.75	32.87	-66.62	Peak
5	0.0712	22.70	-61.86	-39.16	30.56	-69.72	Peak
6	0.0904	19.99	-61.89	-41.90	28.48	-70.38	Peak

- Note: 1. Measurement = Reading Level + Correct Factor.
2. If Peak Result complies with AV and QP limit, AV and QP Result are deemed to comply with AV limit.
3. All 3 polarizations(Horizontal, Face-on and Face-off) of the loop antenna had been tested, but only the worst data recorded in the report.



Test Mode	Channel	Frequency Range	Verdict
11B	MCH	150kHz~490kHz	PASS

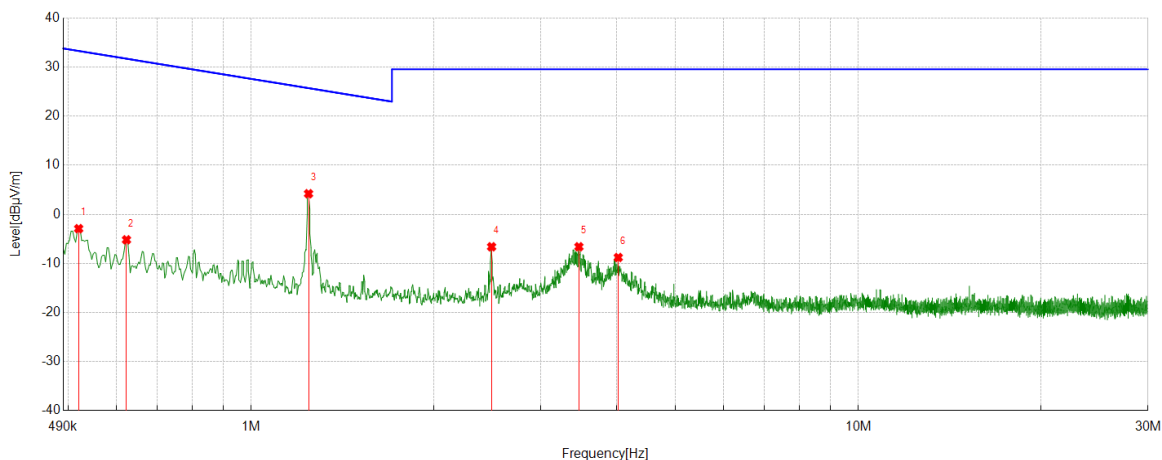


No.	Frequency	Reading Level	Correct Factor	Result	Limit	Margin	Remark
	[MHz]	[dBuV/m]	[dB]	[dBuV/m]	[dBuV/m]	[dB]	
1	0.1708	28.65	-61.91	-33.26	22.96	-56.22	Peak
2	0.2334	29.09	-61.94	-32.85	20.24	-53.09	Peak
3	0.2524	29.97	-61.95	-31.98	19.56	-51.54	Peak
4	0.31	26.09	-61.97	-35.88	17.78	-53.66	Peak
5	0.3462	26.84	-61.97	-35.13	16.82	-51.95	Peak
6	0.3557	27.07	-61.97	-34.90	16.58	-51.48	Peak

- Note: 1. Measurement = Reading Level + Correct Factor.
2. If Peak Result complies with AV and QP limit, AV and QP Result are deemed to comply with AV limit.
3. All 3 polarizations(Horizontal, Face-on and Face-off) of the loop antenna had been tested, but only the worst data recorded in the report.



Test Mode	Channel	Frequency Range	Verdict
11B	MCH	490kHz~30MHz	PASS



No.	Frequency	Reading Level	Correct Factor	Result	Limit	Margin	Remark
	[MHz]	[dBuV/m]	[dB]	[dBuV/m]	[dBuV/m]	[dB]	
1	0.5195	19.03	-21.95	-2.92	33.29	-36.21	Peak
2	0.6228	16.76	-21.95	-5.19	31.72	-36.91	Peak
3	1.2426	26.12	-21.92	4.20	25.72	-21.52	Peak
4	2.488	15.25	-21.86	-6.61	29.54	-36.15	Peak
5	3.4649	15.22	-21.83	-6.61	29.54	-36.15	Peak
6	4.0227	13.02	-21.81	-8.79	29.54	-38.33	Peak

- Note: 1. Measurement = Reading Level + Correct Factor.
2. If Peak Result complies with AV and QP limit, AV and QP Result are deemed to comply with AV limit.
3. All 3 polarizations(Horizontal, Face-on and Face-off) of the loop antenna had been tested, but only the worst data recorded in the report.

9. AC POWER LINE CONDUCTED EMISSIONS

LIMITS

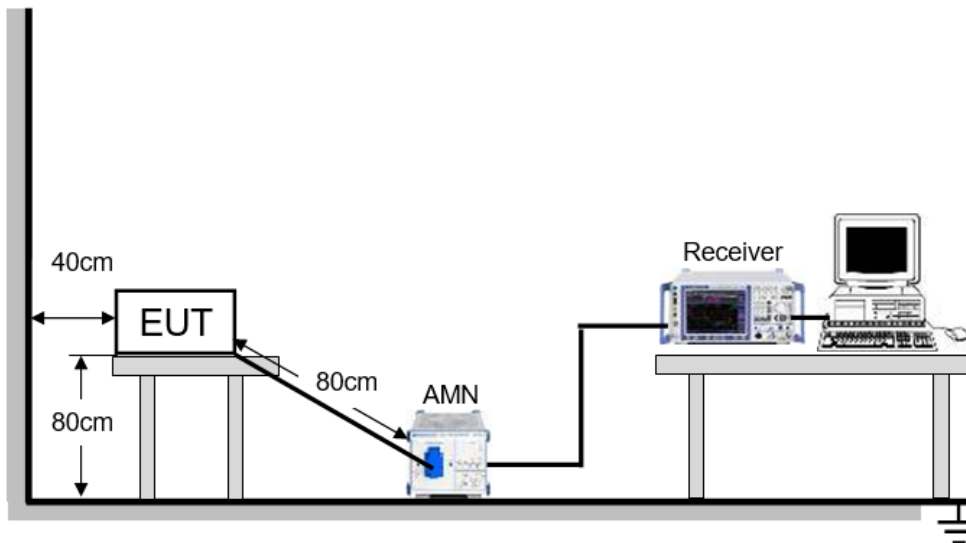
Please refer to FCC §15.207 (a)

FREQUENCY (MHz)	Limit (dBuV)	
	Quasi-peak	Average
0.15 -0.5	66 - 56 *	56 - 46 *
0.50 -5.0	56.00	46.00
5.0 -30.0	60.00	50.00

TEST ENVIRONMENT

Temperature	22°C	Relative Humidity	56%
Atmosphere Pressure	101kPa	Test Voltage	AC 120V

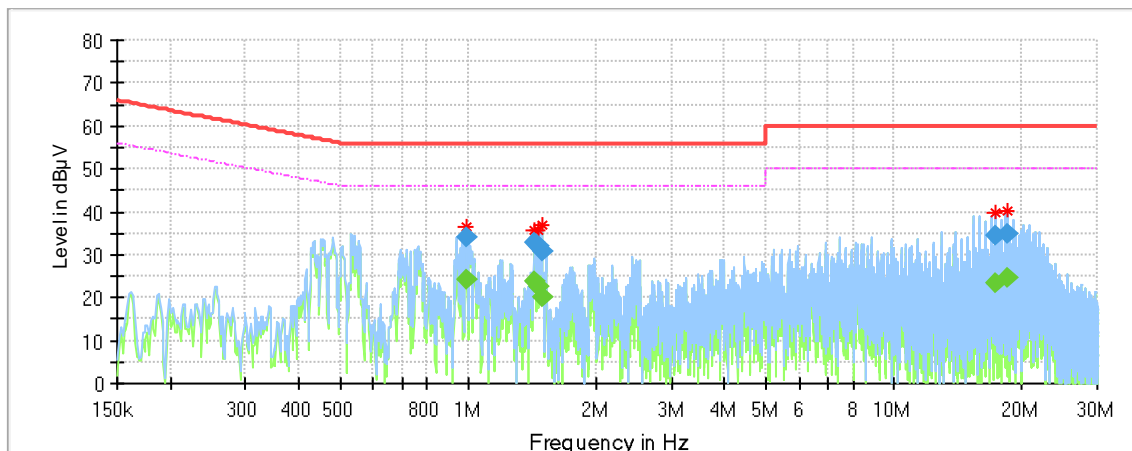
TEST SETUP AND PROCEDURE



The EUT is put on a table of non-conducting material that is 80cm high. The vertical conducting wall of shielding is located 40cm to the rear of the EUT. The power line of the EUT is connected to the AC mains through an Artificial Mains Network (A.M.N.). A EMI Measurement Receiver (R&S Test Receiver ESR3) is used to test the emissions from both sides of AC line. According to the requirements in Section 6.2 of ANSI C63.10-2013. Conducted emissions from the EUT measured in the frequency range between 0.15 MHz and 30MHz using CISPR Quasi-Peak and average detector mode. The bandwidth of EMI test receiver is set at 9kHz.

The arrangement of the equipment is installed to meet the standards and operating in a manner, which tends to maximize its emission characteristics in a normal application.

LINE L RESULTS (WORST-CASE CONFIGURATION)

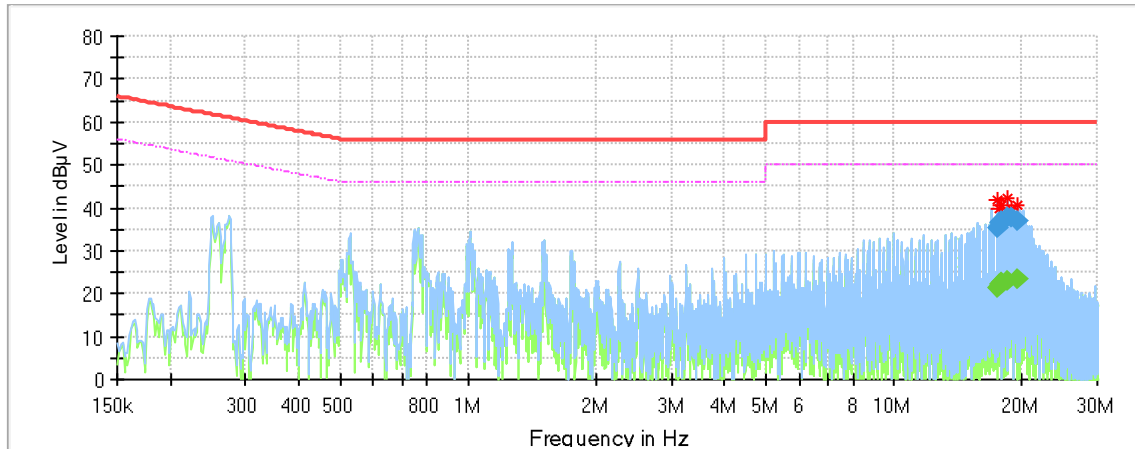


Final_Result

Frequency [MHz]	QuasiPeak [dBμV]	Average [dBμV]	Limit [dBμV]	Margin [dB]	Meas. Time [ms]	Bandwidth [kHz]	Line	Filter	Corr. [dB]
0.988785	---	24.21	46.00	21.79	1000.0	9.000	L1	OFF	9.6
0.988785	34.06	---	56.00	21.94	1000.0	9.000	L1	OFF	9.6
1.430565	---	23.69	46.00	22.31	1000.0	9.000	L1	OFF	9.7
1.430565	32.76	---	56.00	23.24	1000.0	9.000	L1	OFF	9.7
1.454445	---	22.55	46.00	23.45	1000.0	9.000	L1	OFF	9.7
1.454445	32.15	---	56.00	23.85	1000.0	9.000	L1	OFF	9.7
1.485788	30.56	---	56.00	25.44	1000.0	9.000	L1	OFF	9.7
1.485788	---	20.05	46.00	25.95	1000.0	9.000	L1	OFF	9.7
17.364495	34.43	---	60.00	25.57	1000.0	9.000	L1	OFF	9.6
17.364495	---	23.58	50.00	26.42	1000.0	9.000	L1	OFF	9.6
18.368948	---	24.60	50.00	25.40	1000.0	9.000	L1	OFF	9.7
18.368948	34.93	---	60.00	25.07	1000.0	9.000	L1	OFF	9.7

- Note: 1. If QP Result complies with AV limit, AV Result is deemed to comply with AV limit.
2. Test setup: RBW: 200 Hz (9 kHz—150 kHz), 9 kHz (150 kHz—30 MHz).
3. Step size: 80Hz (0.009MHz-0.15MHz), 4 kHz (0.15MHz-30MHz), Scan time: auto.
4. The extension cord/outlet strip was calibrated with the LISN as required by ANSI C63.10:2013 Clause 6.2.2.
5. Pre-testing all test modes and channels, and find the HCH of 11B which is the worst case, so only the worst case is included in this test report.

LINE N RESULTS (WORST-CASE CONFIGURATION)



Final_Result

Frequency [MHz]	QuasiPeak [dBμV]	Average [dBμV]	Limit [dBμV]	Margin [dB]	Meas. Time [ms]	Bandwidth [kHz]	Line	Filter	Corr. [dB]
17.419718	---	21.48	50.00	28.52	1000.0	9.000	N	OFF	9.8
17.419718	35.45	---	60.00	24.55	1000.0	9.000	N	OFF	9.8
17.688368	36.66	---	60.00	23.34	1000.0	9.000	N	OFF	9.8
17.689860	---	22.15	50.00	27.85	1000.0	9.000	N	OFF	9.8
17.934630	36.94	---	60.00	23.06	1000.0	9.000	N	OFF	9.9
17.934630	---	22.41	50.00	27.59	1000.0	9.000	N	OFF	9.9
17.939108	---	22.49	50.00	27.51	1000.0	9.000	N	OFF	9.9
18.439095	37.75	---	60.00	22.25	1000.0	9.000	N	OFF	9.9
18.439095	---	23.13	50.00	26.87	1000.0	9.000	N	OFF	9.9
18.806250	37.64	---	60.00	22.36	1000.0	9.000	N	OFF	10.0
19.558470	---	23.21	50.00	26.79	1000.0	9.000	N	OFF	10.0
19.558470	36.91	---	60.00	23.09	1000.0	9.000	N	OFF	10.0

- Note: 1. If QP Result complies with AV limit, AV Result is deemed to comply with AV limit.
2. Test setup: RBW: 200 Hz (9 kHz—150 kHz), 9 kHz (150 kHz—30 MHz).
3. Step size: 80Hz (0.009MHz-0.15MHz), 4 kHz (0.15MHz-30MHz), Scan time: auto.
4. The extension cord/outlet strip was calibrated with the LISN as required by ANSI C63.10:2013 Clause 6.2.2.
5. Pre-testing all test modes and channels, and find the HCH of 11B which is the worst case, so only the worst case is included in this test report.



10. ANTENNA REQUIREMENTS

APPLICABLE REQUIREMENTS

Please refer to FCC §15.203

An intentional radiator shall be designed to ensure that no antenna other than that furnished by the responsible party shall be used with the device. The use of a permanently attached antenna or of an antenna that uses a unique coupling to the intentional radiator shall be considered sufficient to comply with the provisions of this section. The manufacturer may design the unit so that a broken antenna can be replaced by the user, but the use of a standard antenna jack or electrical connector is prohibited.

Please refer to FCC §15.247(b)(4)

The conducted output power limit specified in paragraph (b) of this section is based on the use of antennas with directional gains that do not exceed 6 dBi. Except as shown in paragraph (c) of this section, if transmitting antennas of directional gain greater than 6 dBi are used, the conducted output power from the intentional radiator shall be reduced below the stated values in paragraphs (b)(1), (b)(2), and (b)(3) of this section, as appropriate, by the amount in dB that the directional gain of the antenna exceeds 6 dBi.

ANTENNA GAIN

The antenna gain of EUT is less than 6 dBi

END OF REPORT