

ZARAM Technology

Bluetooth HID Dongle

BT-300KMS

USER Manual

Please read this user manual before using.

This manual will be changed without notice.

There may be some differences between this manual and the actual equipment operation.

[Cautions]

- If USB power is not enough due to the unstable USB ports of personal computer, this device may not normal operation.
- Do not excessive force this device and do not drop from high.
- Do not use this device under cold, hot, humid and dusty area.
- Do not expose this device to direct sunlight.
- Avoid operating this device in the strong magnetic field.
- Keep away from the water and other liquids. If water or liquid has been spilled into the device, please separate this device from personal computer and dry quickly.
- Do not use chemicals when device cleaning and wipe with dry cloth.
- The company is not liable for any repairs (include user disassemble) resulting from the user which affect to device faults.

[Parts Name]

1. PC Connection Port
2. LED indicator
3. Portable ring hole



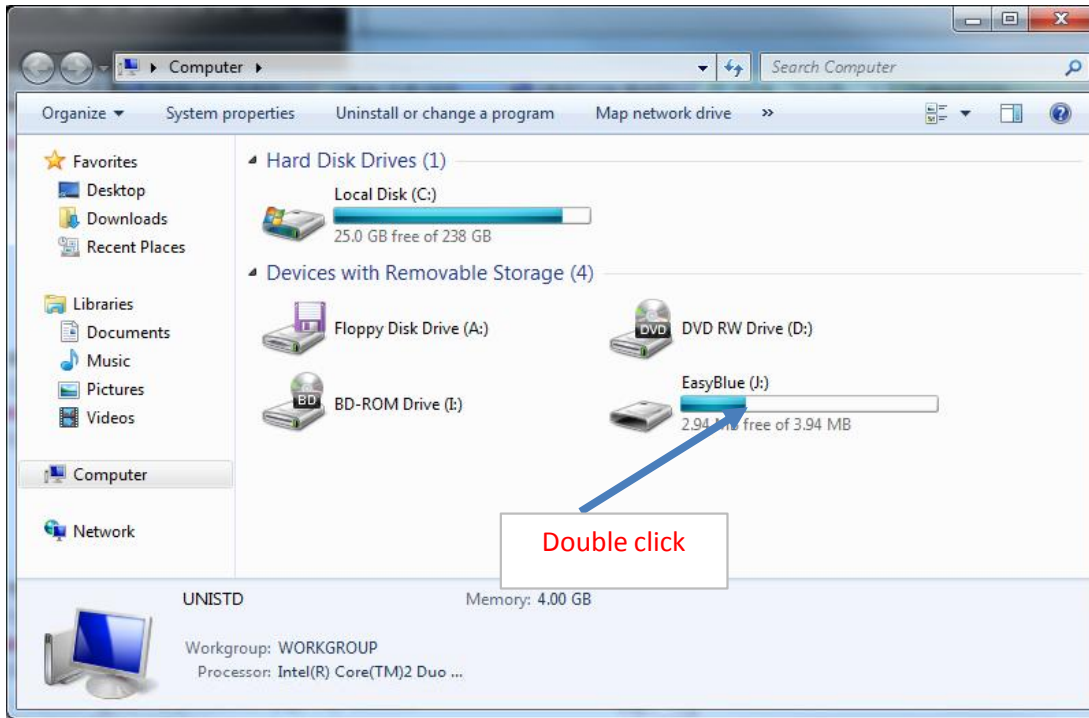
[Specifications]

Bluetooth	Bluetooth BDR
Support profile	HID Keyboard / Mouse
Operating Distance	Max. 10M(CLASS 2)
Power Supply	PC USB Power

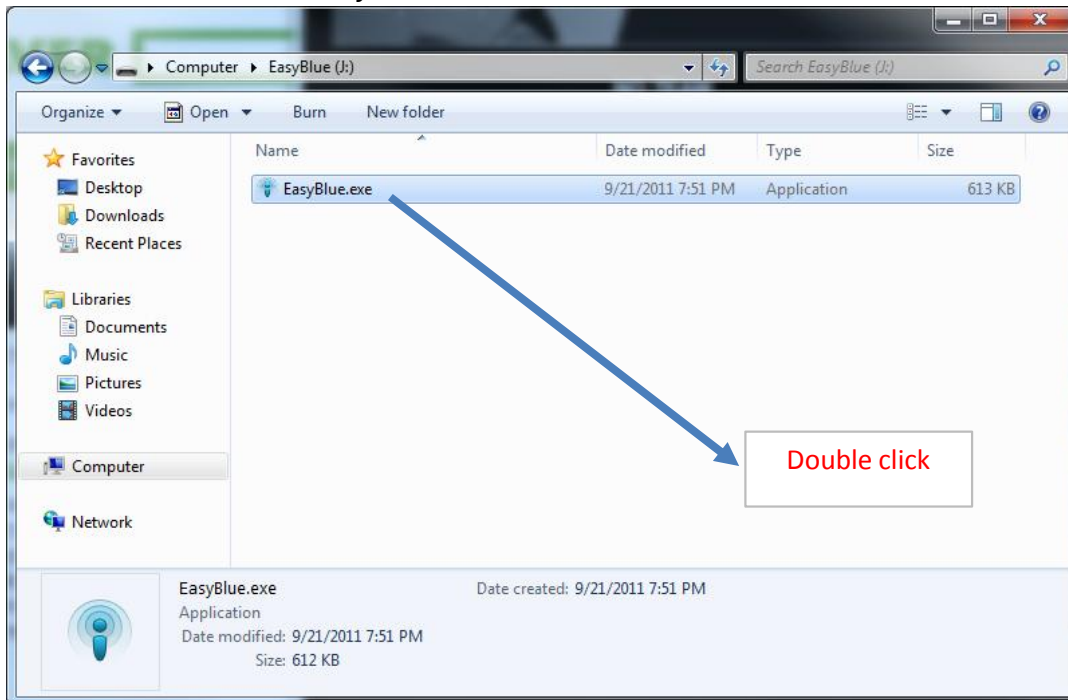
[Pairing with the HID(Keyboard, Mouse) supported Bluetooth device]

The pairing procedure with HID supported Bluetooth device is as follows.

1. Insert the device (EASYBLUE) to USB port of personal computer.
2. Open "My Computer" and double click on "EasyBlue".



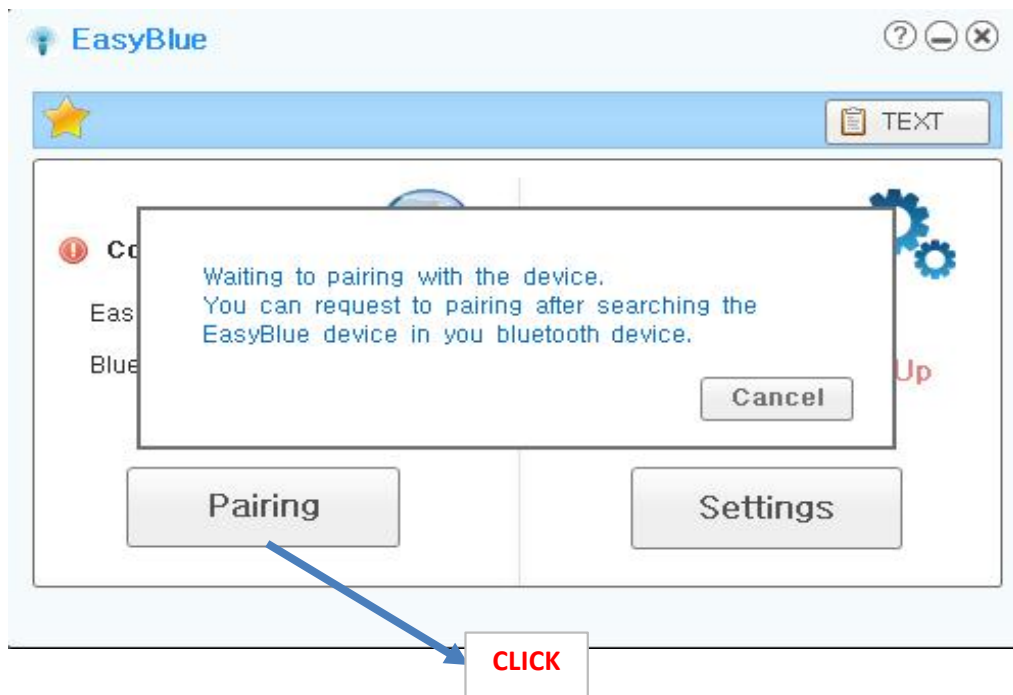
3. Double click on " EasyBlue".



4. Double click on " EasyBlue".



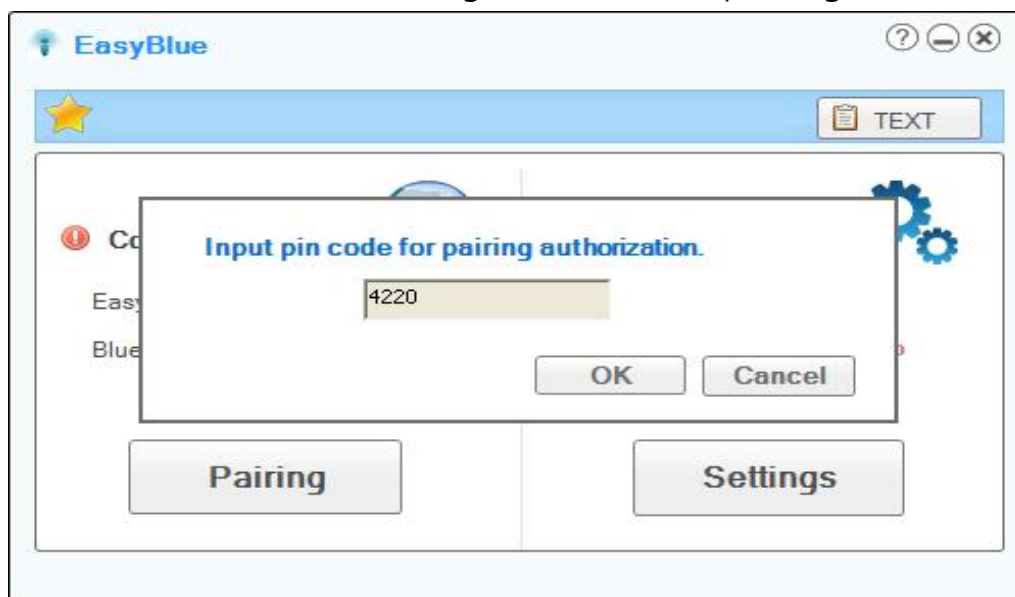
- 1) Local USB device : Connection status is correct, signed on "Connected".
 - 2) Bluetooth device : Indicate on the connection status with Bluetooth device.
 - 3) Pairing : Button for try to connect with Bluetooth device.
 - 4) Switch Hotkey : Press on 'Control+Up(↑)',
the controlling of the Keyboard and Mouse is moved.
 - 5) User Key Map : On the preference, the specify a particular key
on the keyboard and display that shows.
 - 6) Setting : Changing of various user-settings (Changing the name of EasyBlue,
Upgrade on the latest program, Specify the switching shortcut key).
 - 7) TEXT : Using the text input on the input-window or by use of insertions,
it's possible to transfer to Bluetooth device.
5. Click on 'Pairing' in the EasyBlue practice-window, then be 'Standby Pairing'.



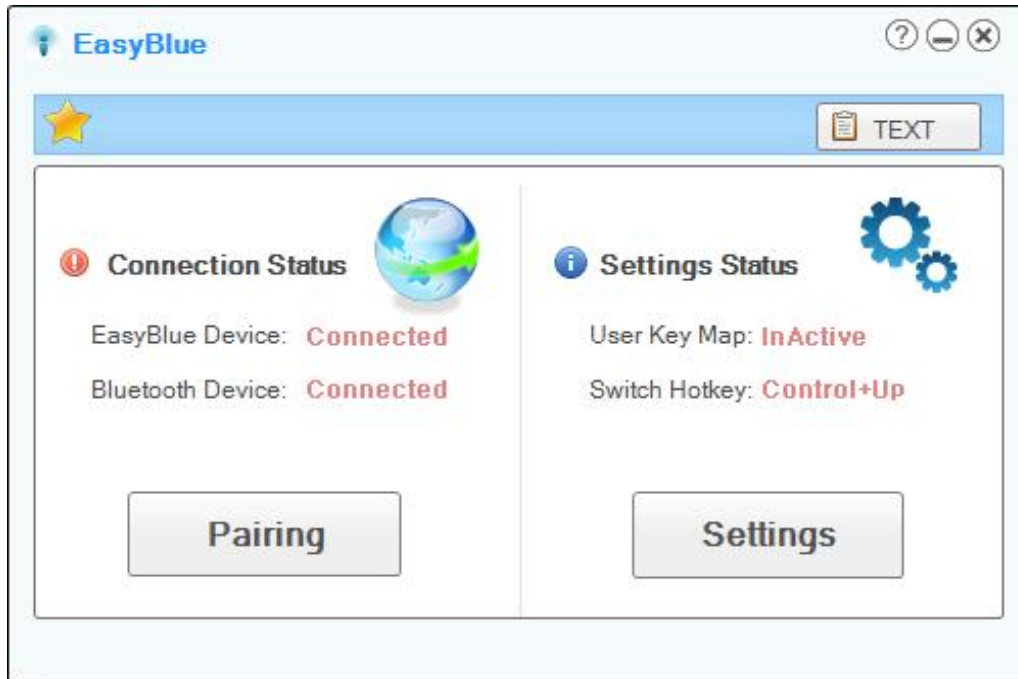
※ To cancel the Pairing of the Standby Pairing condition, Click the Cancel of the Pin Code input-window.

6. EasyBlue device will be under the 'Standby Pairing' condition and LED which integrated on device will be flash once per second.
7. To search the Easyblue, refer to the detailed instruction of [Search Device and Connecting] for Bluetooth device which supported HID profile Keyboard/Mouse.
8. Select "Device connection" on the Bluetooth device, and then PIN Code will be appeared.
9. The input-window for PIN Code appear on EasyBlue practice-window.

※ The PIN Code varies in length of number depending on the Bluetooth device.



10. Enter the 'PIN Code', press 'OK' and waiting for seconds, and then Bluetooth device connection will be completed.



[Using the EasyBlue]

1. When you click on [up](direction up)Key with [Ctrl]Key holding, Keyboard and Mouse is operated in normal on the Bluetooth device.
2. Click [Ctrl] + [up] Key again, Keyboard and Mouse is operated in normal on the personal computer.
3. According to the Bluetooth specifications, Mouse or Keyboard may not operate in normal.

[Smartphone Models – HID Profile Keyboard and Mouse supported]

Based on the first half of 2011 / Supported devices and specifications will be changed.

1. Samsung(OS version 2.2 Froyo and later, Keyboard/Mouse Supported [cursor method])
 - 1) Galaxy S , K , U (A is not supported)
 - 2) Galaxy Tab
2. Apple(iOS 4.0 and later, Keyboard supported only)
 - 1) iPhone 3G , 4
 - 2) iPod Touch
 - 3) iPad 1 , 2

3. Motorola

1) Atrix (Keyboard/Mouse supported, Icon Activate method according to the direction of mouse)

2) Xoom

4. HTC

1) Sensation

FCC Statement

Caution : Any changes or modifications in construction of this device which are not expressly approved by the party responsible for compliance could void the user's authority to operate the equipment.

This device complies with part 15 of the FCC Rules. Operation is subject to the following two conditions: (1) This device may not cause harmful interference, and (2) This device must accept any interference received, including interference that may cause undesired operation.

NOTE: The manufacturer is not responsible for any radio or TV interference caused by unauthorized modifications to this equipment. Such modifications could void the user's authority to operate the equipment.

NOTE: This equipment has been tested and found to comply with the limits for a Class B digital device, pursuant to part 15 of the FCC Rules. These limits are designed to provide reasonable protection against harmful interference in a residential installation. This equipment generates uses and can radiate radio frequency energy and, if not installed and used in accordance with the instructions, may cause harmful interference to radio communications. However, there is no guarantee that interference will not occur in a particular installation.

If this equipment does cause harmful interference to radio or television reception, which can be determined by turning the equipment off and on, the user is encouraged to try to correct the interference by one or more of the following measures:

- Reorient or relocate the receiving antenna.
- Increase the separation between the equipment and receiver.
- Connect the equipment into an outlet on a circuit different from that to which the receiver is connected.
- Consult the dealer or an experienced radio/TV technician for help.

Equipment : Bluetooth HID Dongle
Model: BT-300KMS
FCC ID : ZYGBT-300KMS



KCC-CRM-ZVR-BT-300KMS

XXXXXXXXXX

"해당 무선설비는 운용 중 전파혼신 가능성이 있음"