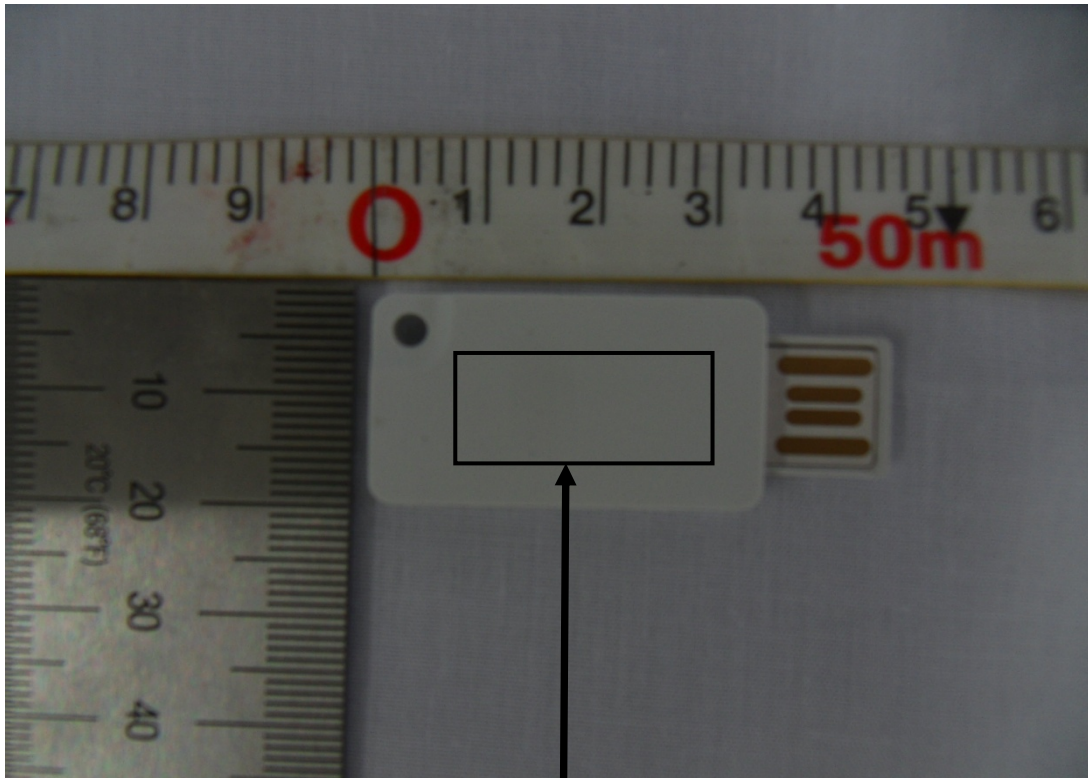


## Label



**Bluetooth HID Dongle**

**Model: BT-300KMS**

**FCC ID : ZYGBT-300KMS**

THIS DEVICE COMPLIES WITH PART 15 OF THE FCC RULES.  
OPERATION IS SUBJECT TO THE FOLLOWING TWO CONDITIONS:  
(1) THIS DEVICE MAY NOT CAUSE HARMFUL INTERFERENCE, AND  
(2) THIS DEVICE MUST ACCEPT ANY INTERFERENCE RECEIVED,  
INCLUDING INTERFERENCE THAT MAY CAUSE UNDESIRABLE OPERATION

**ZARAM TECHNOLOGY CO.,LTD.**