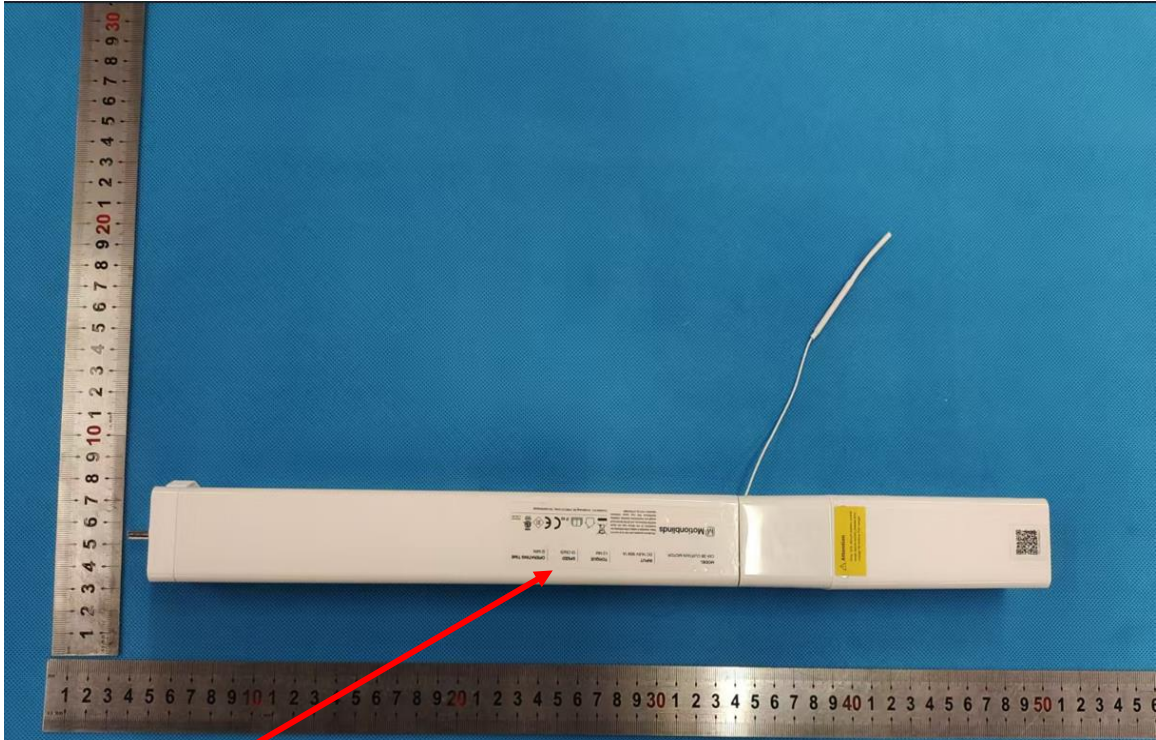



# Label & Location











Label position

## Label

MODEL	INPUT	TORQUE	SPEED	OPERATING TIME
CM-36 CURTAIN MOTOR	DC 14.8V 16W 1A	1.2 NM	13 CM/S	12 MIN

 **Motionblinds**

This device complies with Part 15 of the FCC Rules. Operation is subject to the following two conditions: (1) this device may not cause harmful interference, and (2) this device must accept any interference received, including interference that may cause undesired operation. | FCC ID: ZY4CM36B1

   IP 40      Conforms to UL Std. 325

Coulisse B.V. Vonderweg 48, 7468 DC Enter, The Netherlands