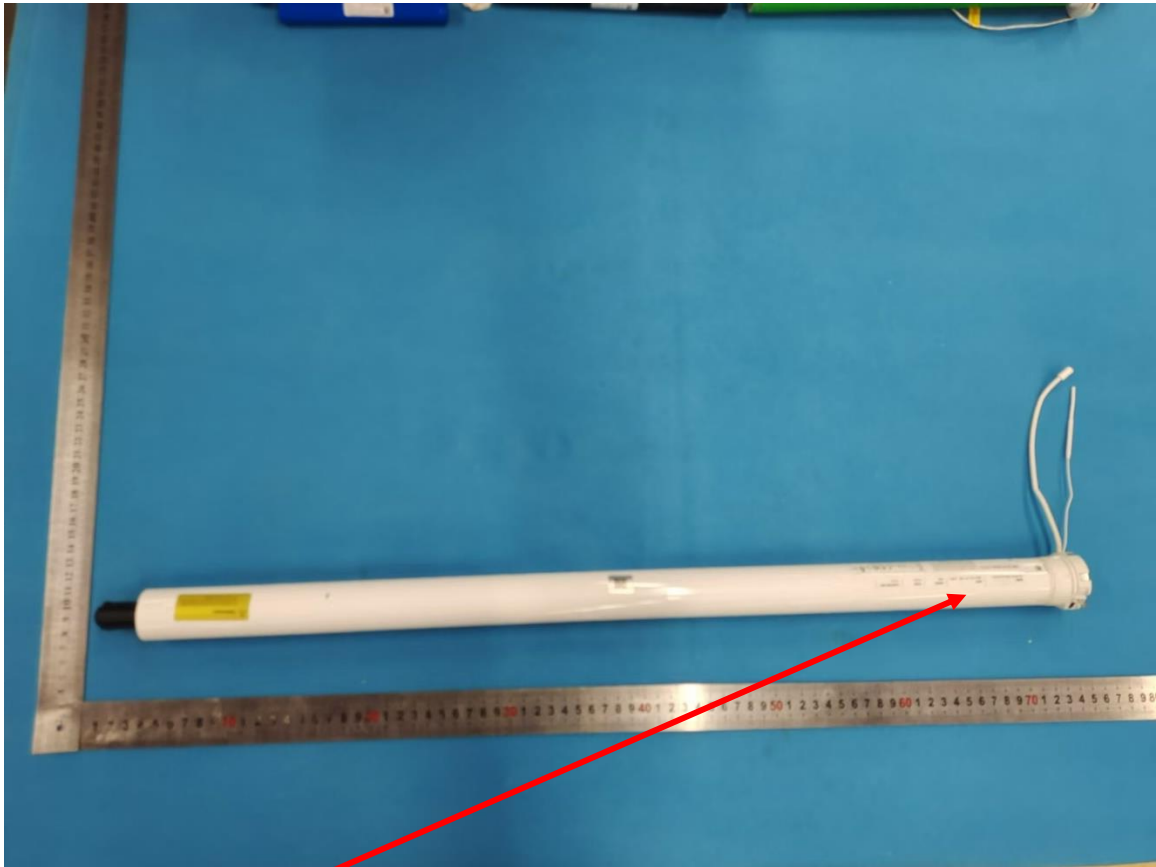











## Label & Location



Label position

## Label

<b>MODEL</b> CM-06-E-V VENETIAN MOTOR	<b>INPUT</b> USB-C 5V  38W 3.23A	<b>TORQUE</b> 6Nm	<b>SPEED</b> 24rpm	<b>OPERATING TIME</b> 12min
<div><div>eve.   MOTIONBLINDS</div><div><div><p>This device complies with Part 15 of the FCC Rules. Operation is subject to the following two conditions: (1) this device may not cause harmful interference, and (2) this device must accept any interference received, including interference that may cause undesired operation.   FCC ID: ZY4CM06E1   IC:28177-CM06E1</p></div><div><div>IP 20</div><div>Powered by</div><div>Conforms to ANSI/CAN/UL 508.505</div></div></div><div>Coulisse B.V. Vondeweg 48, 7468 DC Enter, The Netherlands</div></div>				