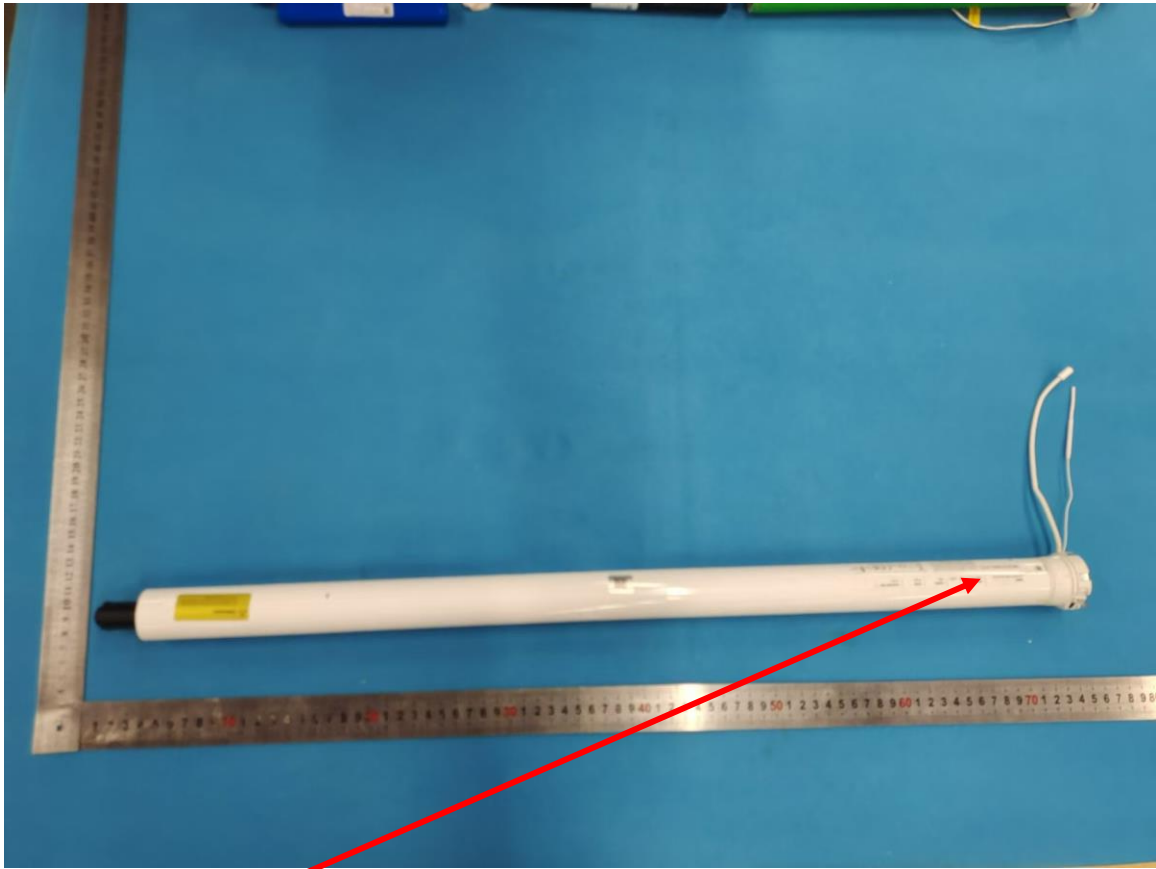










Label & Location



Label position

Label

MODEL CM-06 TUBULAR MOTOR	INPUT USB-C 5V  38W 3.23A	TORQUE 6 NM	SPEED 24 RPM	OPERATING TIME 12 MIN
 Motionblinds	<small>This device complies with Part 15 of the FCC Rules. Operation is subject to the following two conditions: (1) this device may not cause harmful interference, and (2) this device must accept any interference received, including interference that may cause undesired operation. FCC ID: ZY4CM06B1</small>	   IP 20	  	<small>Conforms to UL 506, 325</small>
<small>Coulisse B.V. Vonderweg 48, 7468 DC Enter, The Netherlands</small>				