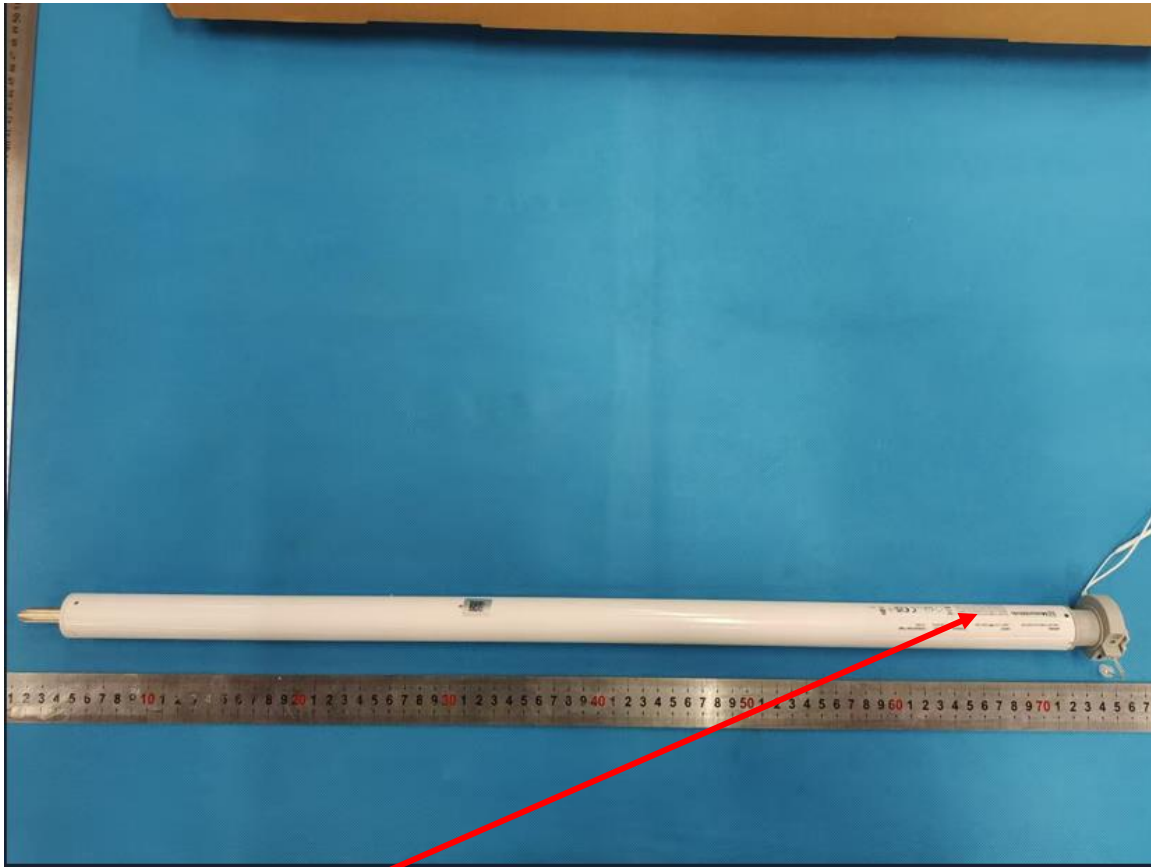











Label & Location



Label position

Label

MODEL CM-05 TUBULAR MOTOR	INPUT USB-C 5V  22W 1.6A	TORQUE 2.0 NM	SPEED 28 RPM	OPERATING TIME 12 MIN
<div> Motionblinds</div> <div><small>This device complies with Part 15 of the FCC Rules. Operation is subject to the following two conditions: (1) this device may not cause harmful interference, and (2) this device must accept any interference received, including interference that may cause undesired operation. FCC ID: ZY4CM05B1</small></div> <div>   IP 20     <small>Conforms to UL Std. 305</small></div> <div><small>Coulisse B.V. Vonderweg 48, 7468 DC Enter, The Netherlands</small></div>				