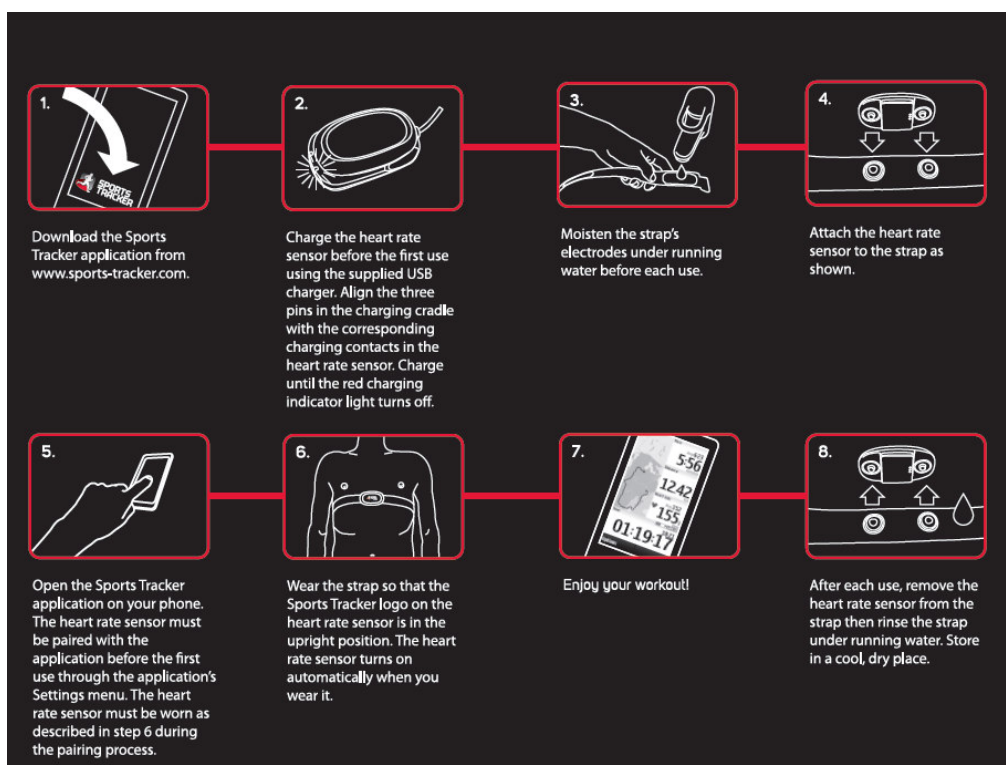
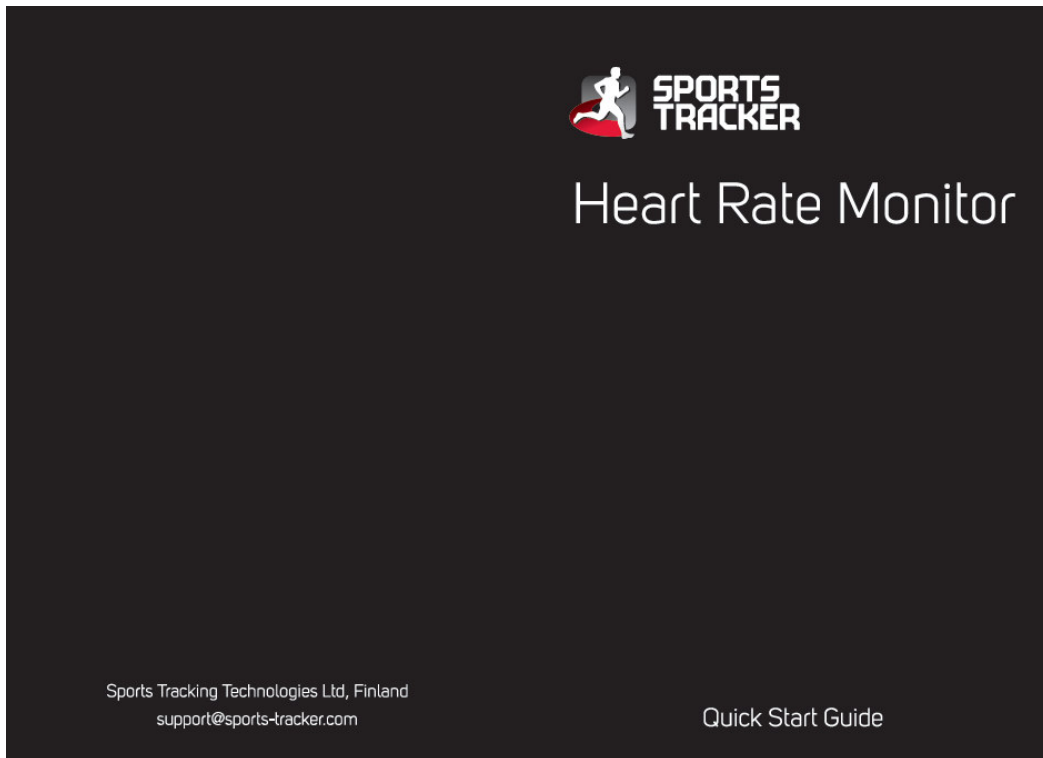


1.6 User Manual



Use

Before using the heart rate monitor for the first time, you have to pair it with the Sports Tracker application via the application's Settings menu. The application can display information on exercise intensity using heart rate zones. See www.sports-tracker.com/hrm for more information on downloading the Sports Tracker application, pairing, and how to adjust your heart rate zone limits.

Moisten the strap's electrodes under running water before each use. Attach the heart rate sensor to the strap. Launch the Sports Tracker application on your phone. Be sure to wear the HRM with the Sports Tracker logo in the upright position. The application will automatically connect with the heart rate sensor and display heart rate data when you are wearing the HRM. If the connection is lost, remove the heart rate sensor for 30 seconds, re-moisten the strap's electrodes and try again.

Disconnect the heart rate sensor and rinse the strap under running water after each use.

Charging

Use the supplied USB charger to charge the battery before the first use and whenever needed. When inserting the heart rate sensor into the cradle, align the charger pins with the charging contacts underneath the heart rate sensor. A green light on the charging cradle indicates that the charger is connected to a USB power source. A red light will show during charging and will turn off once the heart rate sensor is fully charged.

Care

Store the Sports Tracker Heart Rate Monitor in a cool, dry place with the heart rate sensor disconnected from the strap. Use a soft cloth to clean the heart rate sensor. Do not iron, tumble dry, or bleach the strap.



Technical information

Bluetooth® compliant, Class 2. Operating frequency: 2400-2483.5 MHz

Bluetooth® PIN code: 0000

Connection range: 10 m / 33 ft in open space

Operating time on full charge:
approximately 40 hours

Battery: rechargeable lithium polymer
battery (non-user-replaceable)

The heart rate sensor is water resistant

Sports Tracker and the Sports Tracker logo are trademarks of Sports Tracking Technologies Ltd. Other trademarks are the property of their respective owners.

This product contains a lithium polymer battery and must be disposed of properly, according to local regulations. Do not treat as household waste.

FCC statement

This device complies with Part 15 of the FCC Rules. Operation is subject to the following two conditions: (1) this device may not cause harmful interference, and (2) this device must accept any interference received, including interference that may cause undesired operation. Warning: Changes or modifications not expressly approved by the party responsible for compliance could void the user's authority to operate the equipment.

IC statement:

Operation is subject to the following two conditions:

1. This device may not cause interference.
2. This device must accept any interference, including interference that may cause undesired operation of the device.

Cet appareil utilisation est exposée aux deux conditions suivantes:

1. cet appareil ne causera aucune interférence
2. cet appareil acceptera toute interférence reçue, incluant des interférences qui pourraient en modifier son fonctionnement



FCC-ID: ZXU-6430043182021
IC: 9869A-STHRM
Bluetooth QD ID: B018498

Visit www.sports-tracker.com/hrm before using the Sports Tracker Heart Rate Monitor for important product information and warnings.

Always consult your physician before starting any exercise programme.

