

## Bluetooth Mouse



### Insert Mouse Batteries

Before using your Bluetooth Mouse, you must insert 2 AAA batteries. Batteries are not included.



### Connect your Bluetooth Mouse

In order to use your Bluetooth Mouse, you must first connect it to the device you intend to use it with. This is called "pairing". After you have paired your mouse, it will automatically connect to your device when the mouse is powered on and within its 30 feet operating range.

Below are instructions to pair your mouse with a computer with built-in Bluetooth. If you are using this mouse with a Bluetooth adapter, please refer to your adapter's documentation.

### Pair with Windows

1. Turn on your Bluetooth Mouse using the **ON/OFF Button** located on the bottom of your mouse.



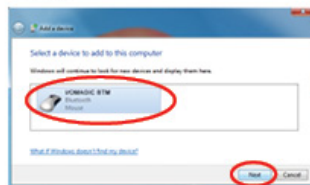
2. Click the Bluetooth icon located in your system tray. You can also find the Bluetooth icon in your system's Control Panel.



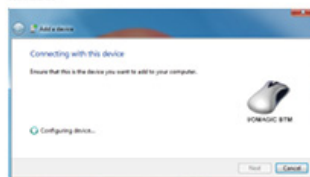
3. The Add a Device window will appear. Press the **Connect Button** on the bottom of your Bluetooth Mouse. Your new mouse will be detected and appear in the window.



4. Select your newly detected mouse and click **Next** to continue.



5. Windows will connect and configure your Bluetooth Mouse.



6. After connection is successful, click **Close**.



7. Windows will continue to install drivers and may take a few seconds before your mouse is active and ready to use.



8. Congratulations, you are now ready to use your Bluetooth Mouse.

### Product Registration / Warranty

To activate your product's warranty and obtain lifetime support, you must go to [www.iomagic.com](http://www.iomagic.com) to register your product.

### IOMagic Support

For Live Support, please visit our web site at [www.iomagic.com](http://www.iomagic.com), and click **Support** then **LiveChat**.

Call our Technical Support Hotline at

1-949-707-4888 • Monday-Friday 8am - 5pm PST.

©2011 IOMagic. The IOMagic logo and trademark is a registered trademark of IOMagic Corporation. All other logos and/or trademarks are their respective owners. IOMagic is not responsible for inadvertent errors.

## FCC STATEMENT

1. This device complies with Part 15 of the FCC Rules. Operation is subject to the following two conditions:

(1) This device may not cause harmful interference.

(2) This device must accept any interference received, including interference that may cause undesired operation.

2. Changes or modifications not expressly approved by the party responsible for compliance could void the user's authority to operate the equipment.

NOTE: This equipment has been tested and found to comply with the limits for a Class B digital device, pursuant to Part 15 of the FCC Rules. These limits are designed to provide reasonable protection against harmful interference in a residential installation.

This equipment generates uses and can radiate radio frequency energy and, if not installed and used in accordance with the instructions, may cause harmful interference to radio communications. However, there is no guarantee that interference will not occur in a particular installation. If this equipment does cause harmful interference to radio or television reception, which can be determined by turning the equipment off and on, the user is encouraged to try to correct the interference by one or more of the following measures:

- Reorient or relocate the receiving antenna.

- Increase the separation between the equipment and receiver.

- Connect the equipment into an outlet on a circuit different from that to which the receiver is connected.

- Consult the dealer or an experienced radio/TV technician for help.

## RF warning statement:

The device has been evaluated to meet general RF exposure requirement. The device can be used in portable exposure condition without restriction.