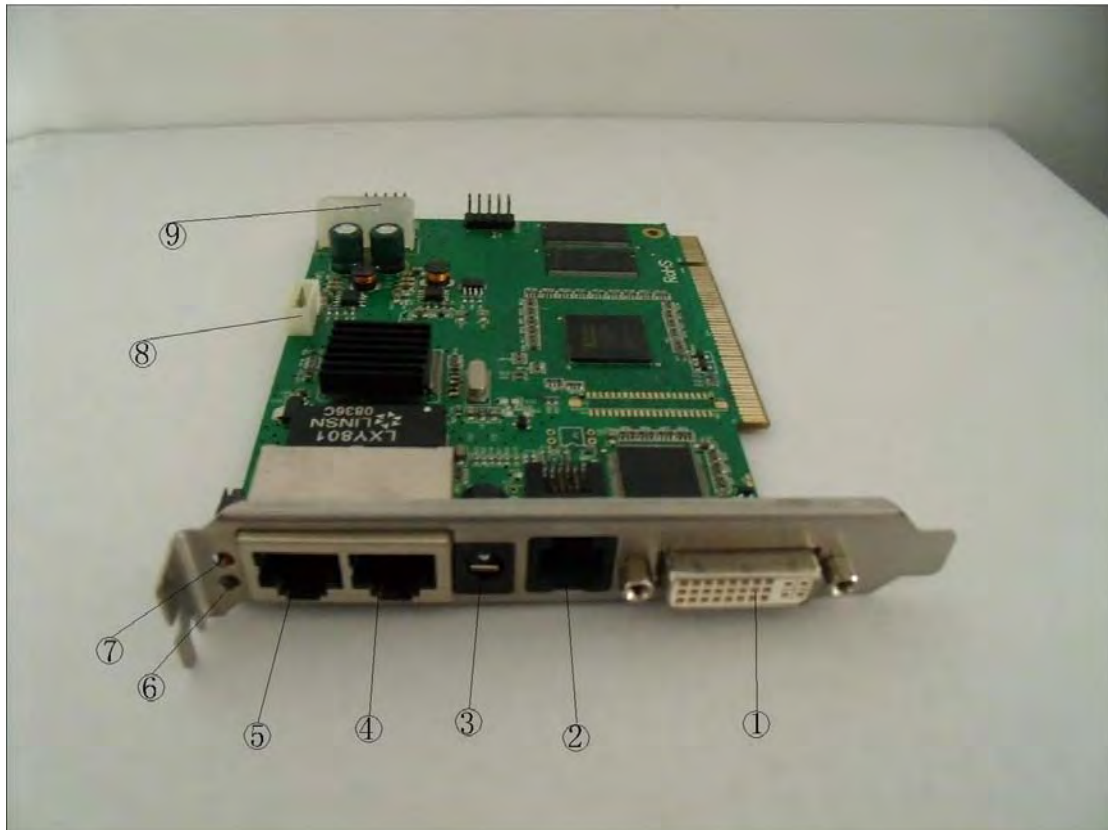


Specification of the control system

一、Components description

1、The sending card



- ① DVI input , connected to the DVI output of the graphics card.
- ② Serial por, connected to the serial port interface of the computer (RS232).
- ③ DIP interface, DC 5V power input.
- ④ 1U cable output, At output port 1.
- ⑤ 1D cable output, At output port 2.
- ⑥ Indicating lights of the power, the red light on for power

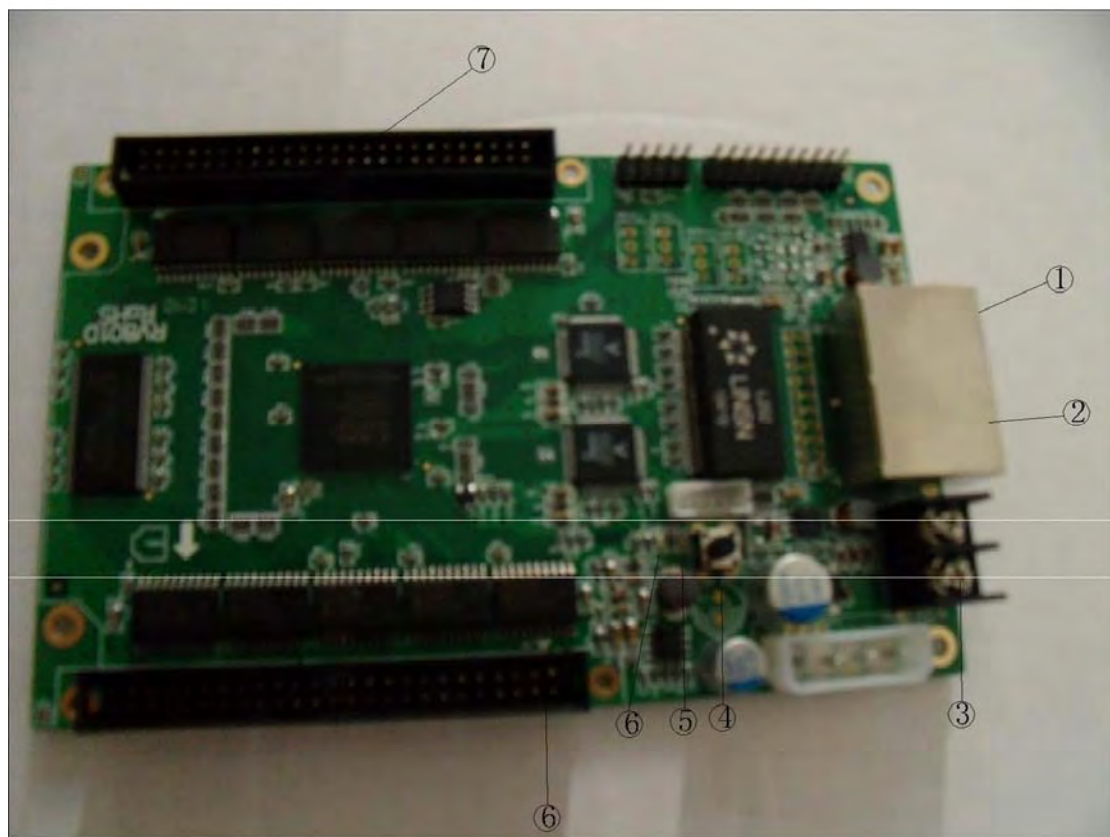
up.

⑦ Signal light, the green light on after the signal being inputed.

⑧ DIP interface, DC 5V power input.

⑨ DIP interface, DC 5V power input.

2、 The receiver card



① B-signal output or input.

② A-signal output of input.

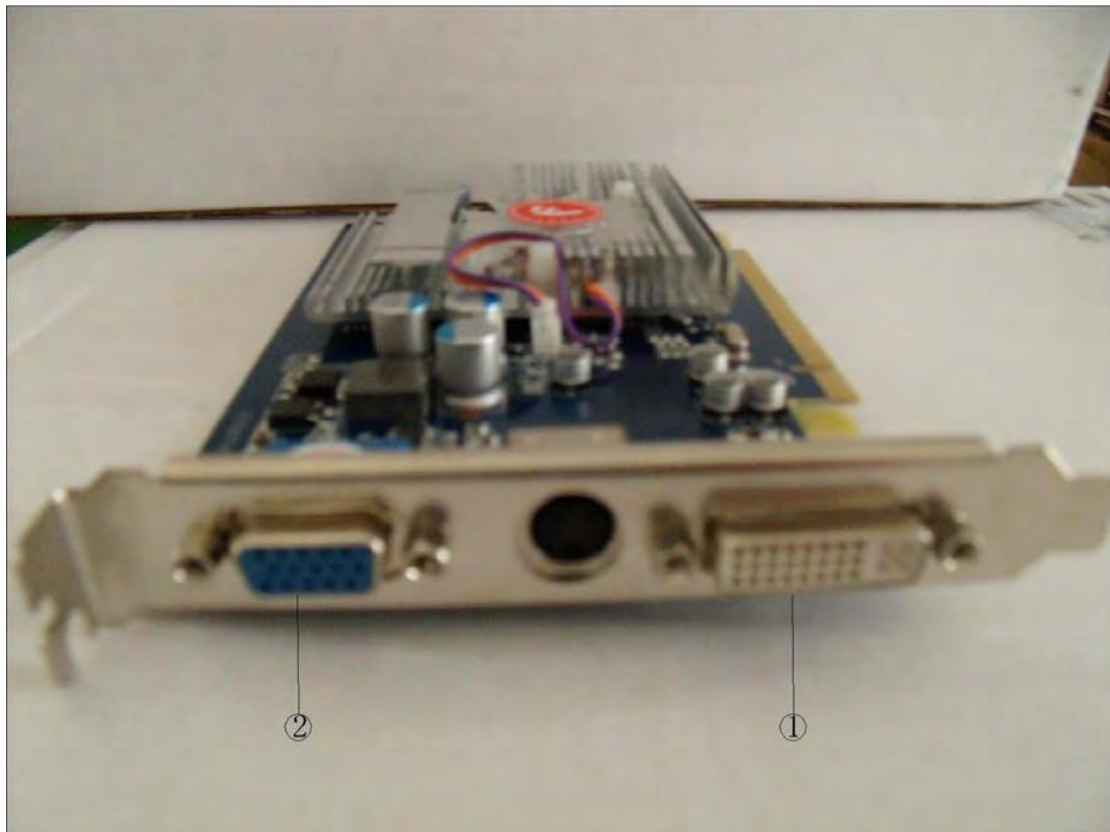
③ DC 5V input.

④ Automatic inspection, the inspection button when there' s no

signal.

- ⑤ Signal lights, the green light flashing after signal input.
- ⑥ The indicating lights of power, the red light on for DC 5v power up.
- ⑦ HUB interface, connect the screen to the conversion card with the same signal.
- ⑧ HUB interface, connect the screen to the conversion card with the same signal.

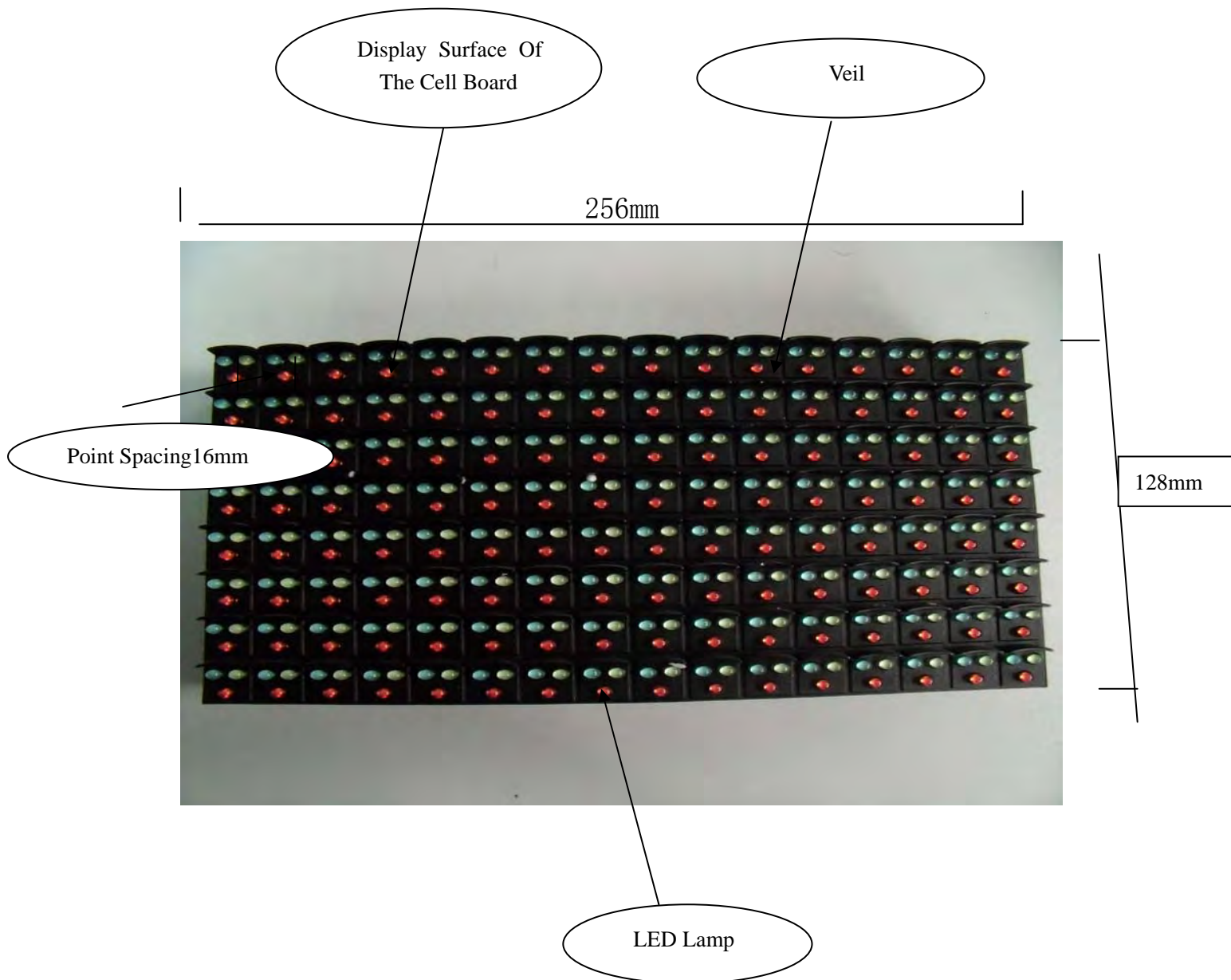
3、 The graphics card



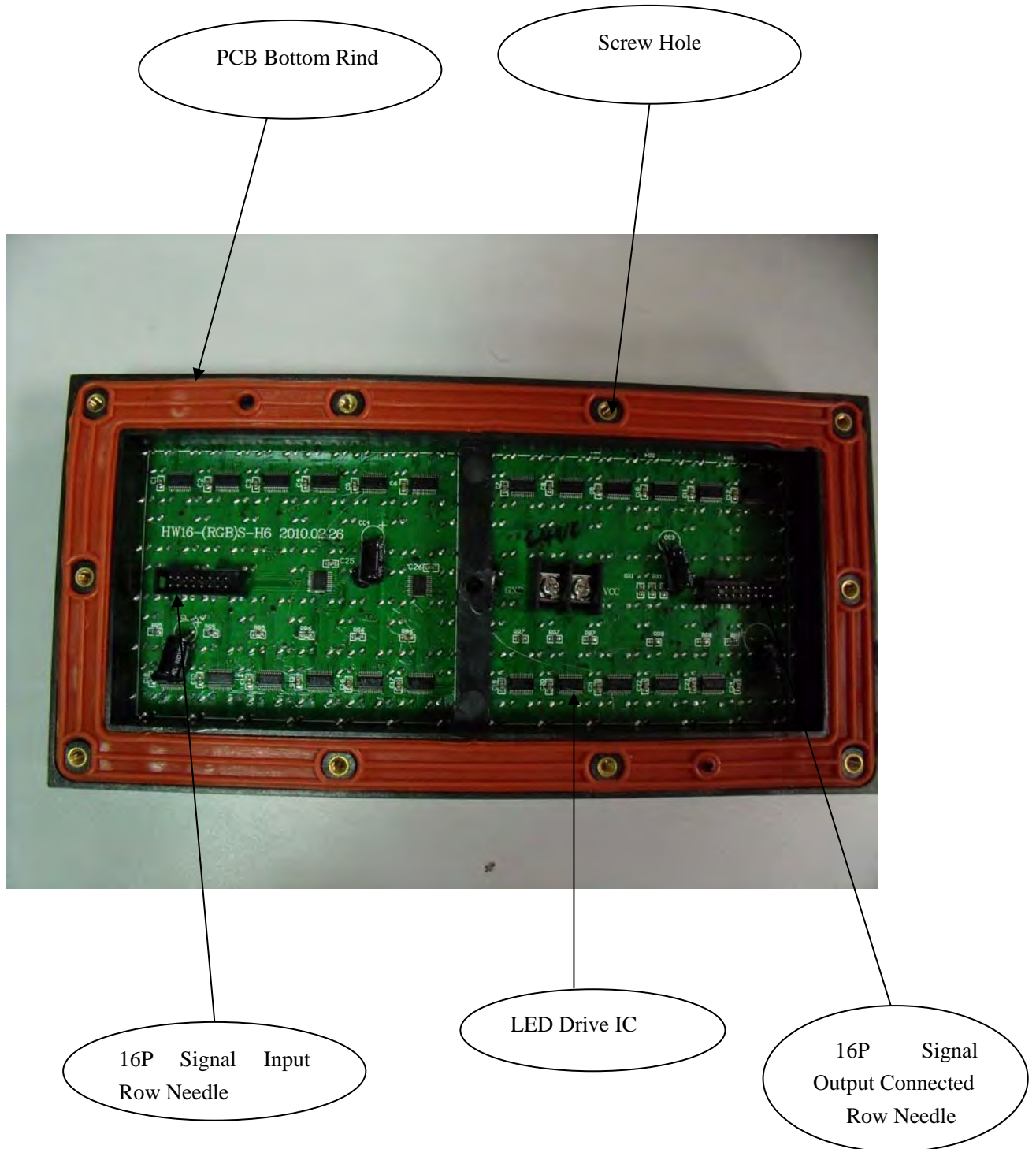
- ① DVI output, signal transmitted to the sending card 801.

② VGA output, signal transmitted to the display.

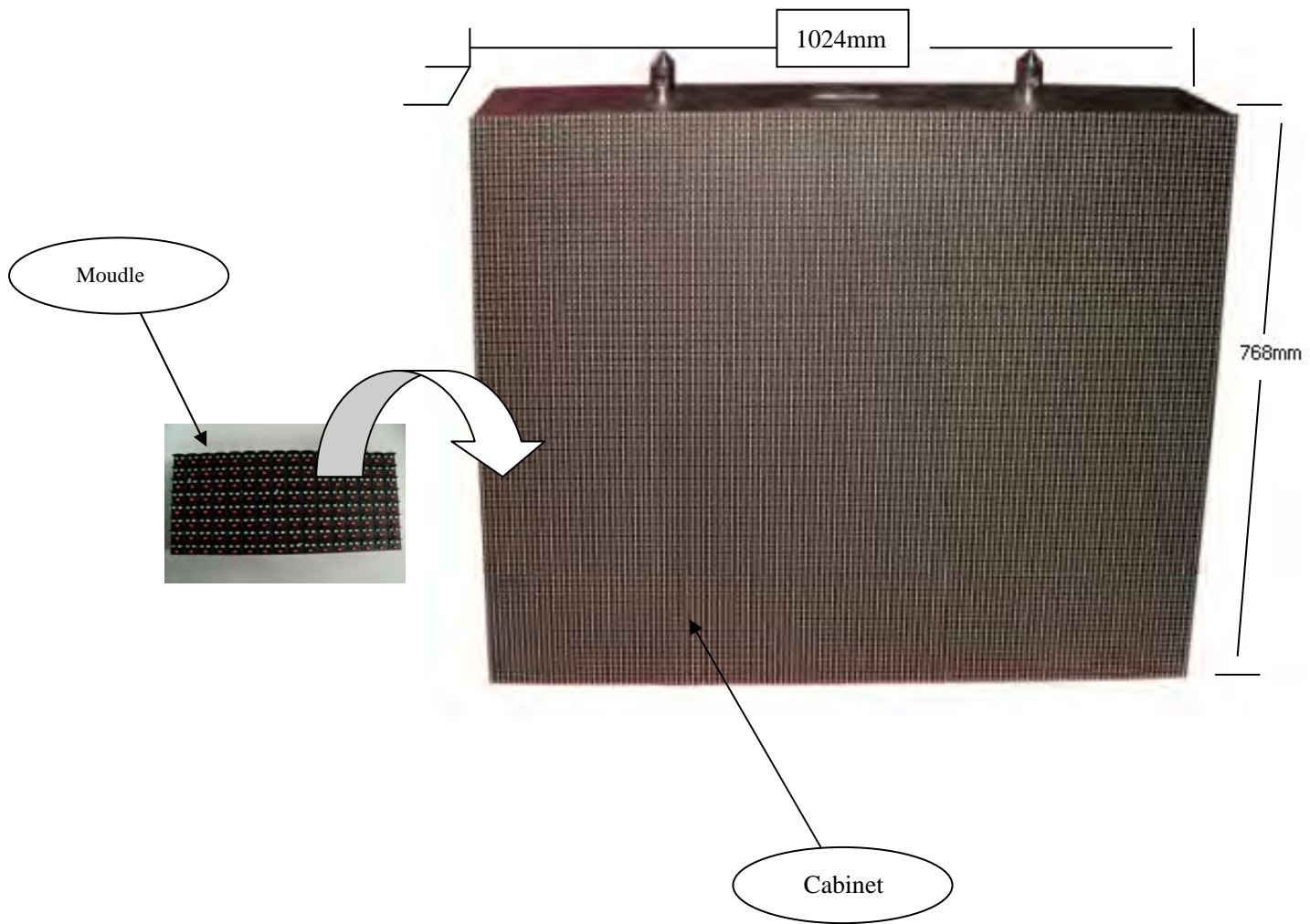
1、The Front Exploded View



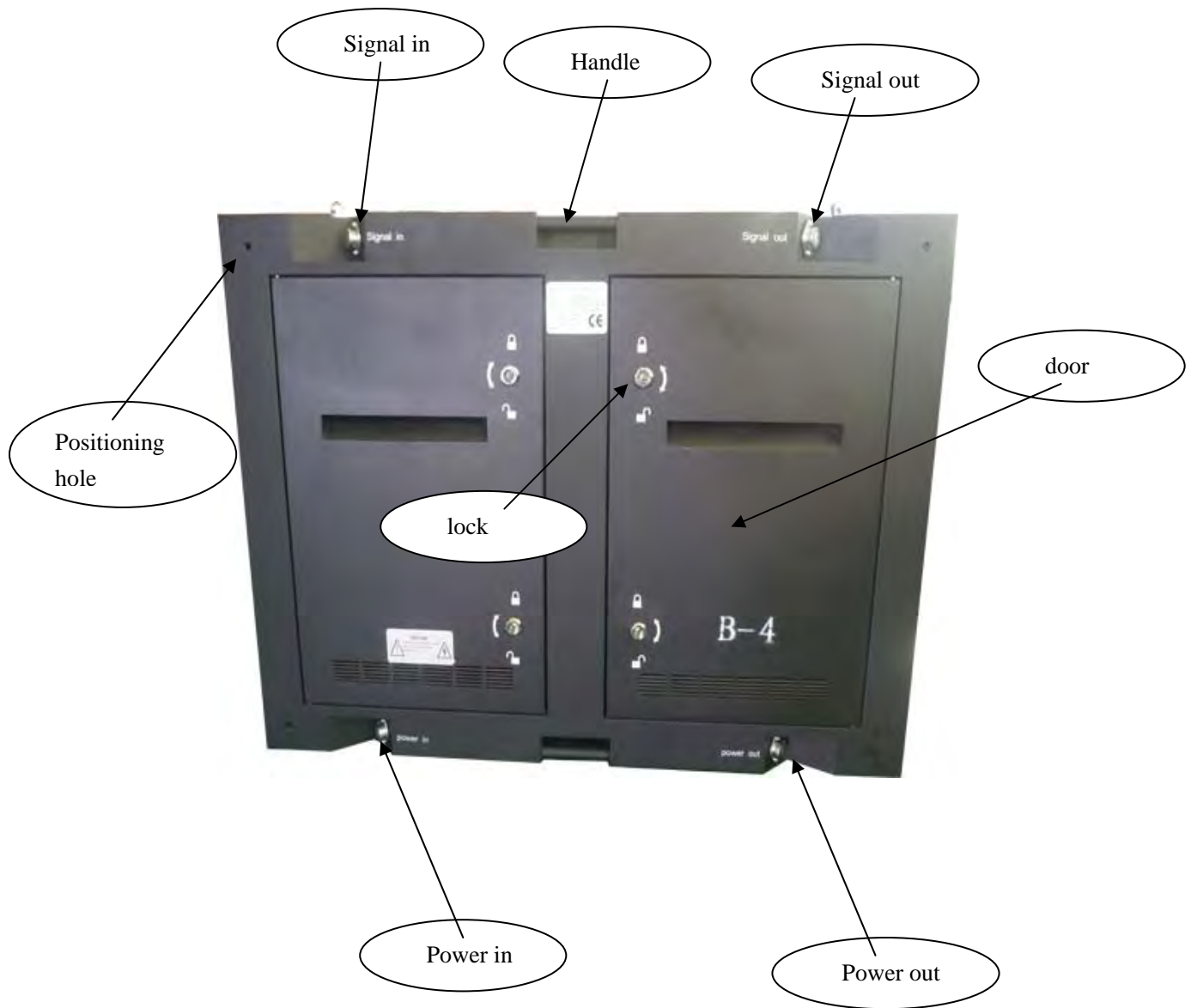
2、The Back Exploded View



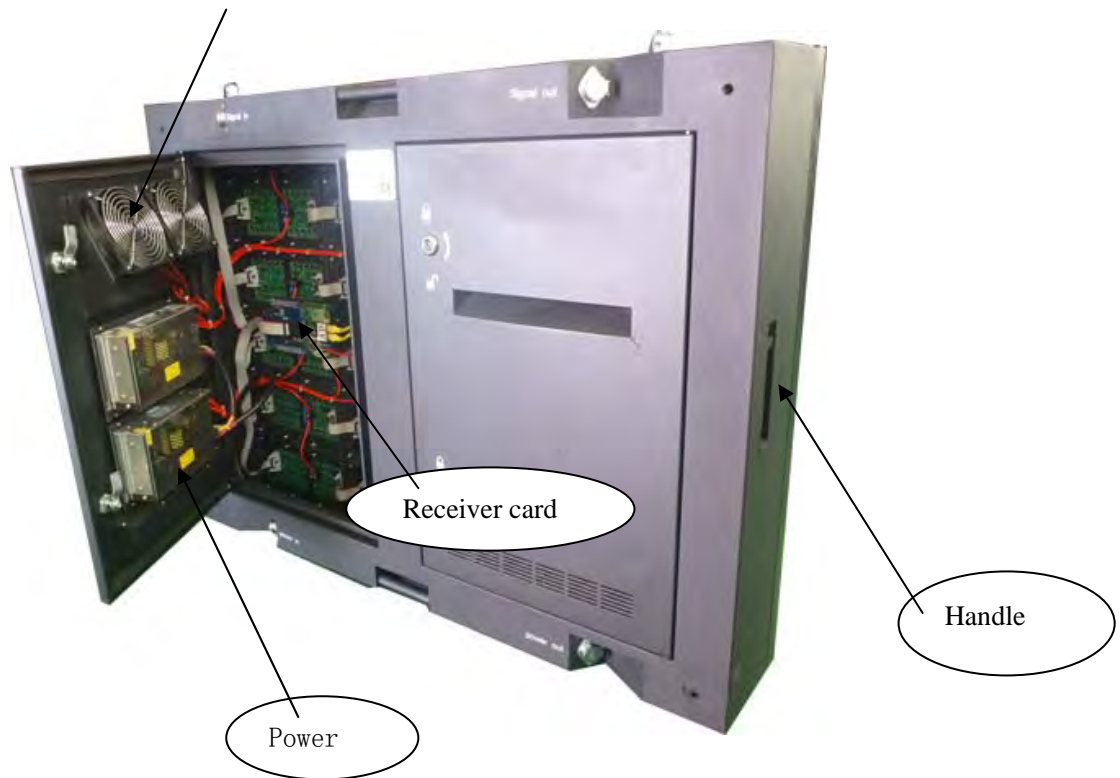
1、The Front Exploded View



2、The Back Exploded View



3、The Back Door Open Exploded View



Power line



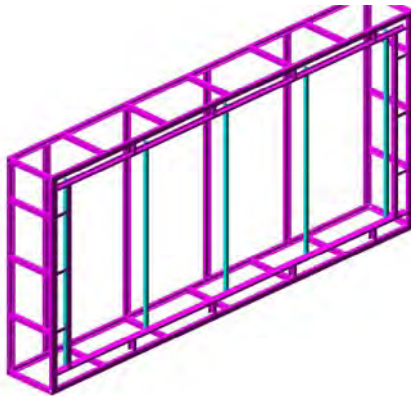
Signal line



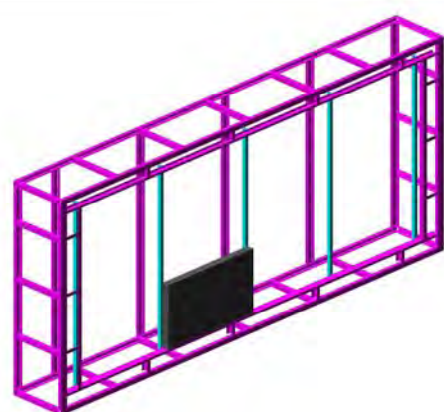
screw



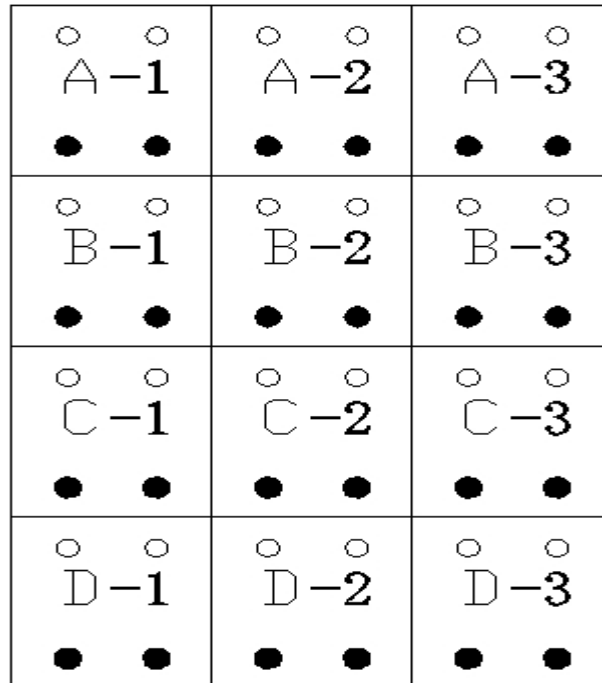
Lock for connecting
with each cabinet



Connecting every cabinet and the order is as follows:



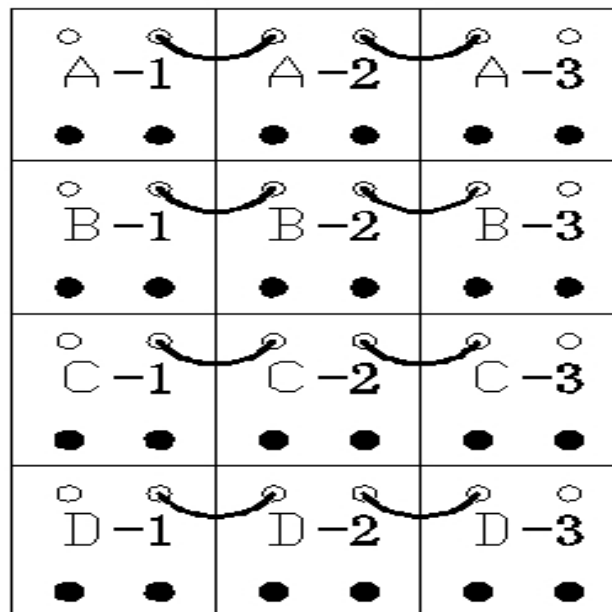
After fixing one cabinet



Screen back

2、Power and signal connection

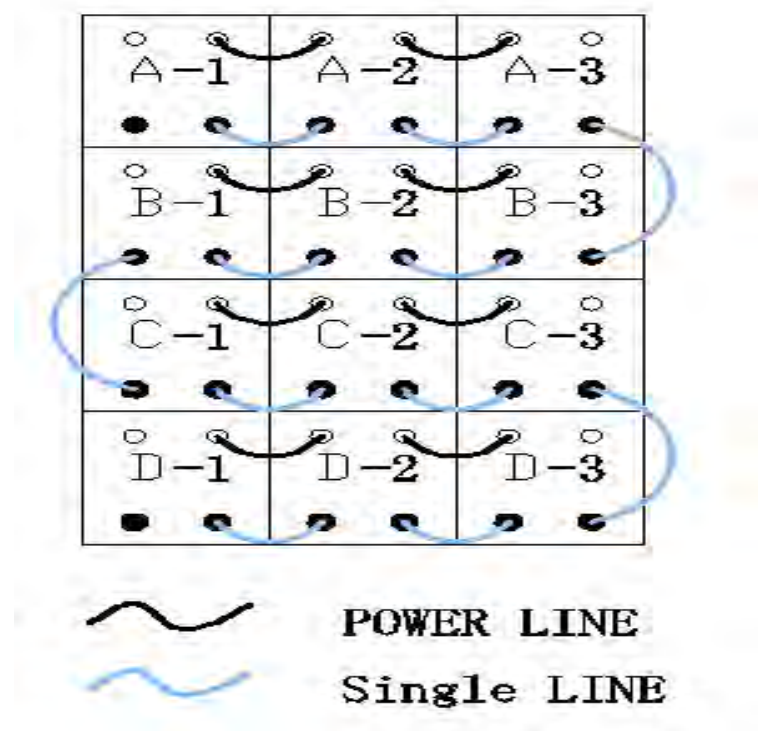
1): Connecting the power line for screen well, as shown in below.



 --POWER LINE

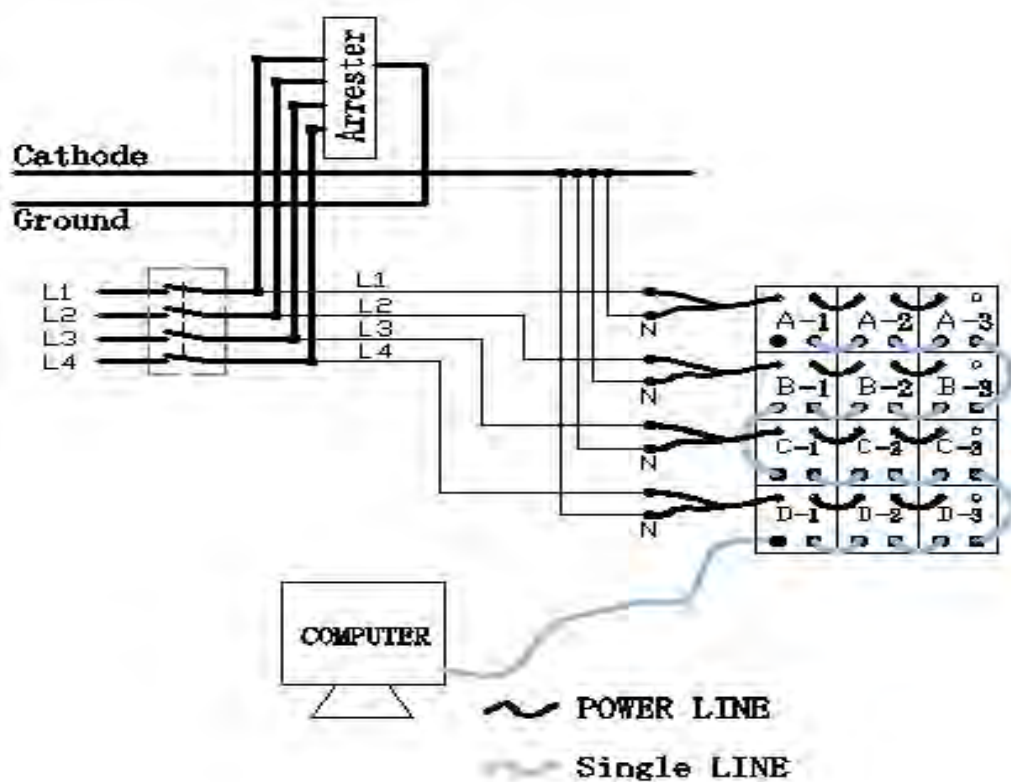
Screen Back

2): Connecting the signal line for screen well, as shown in below.。

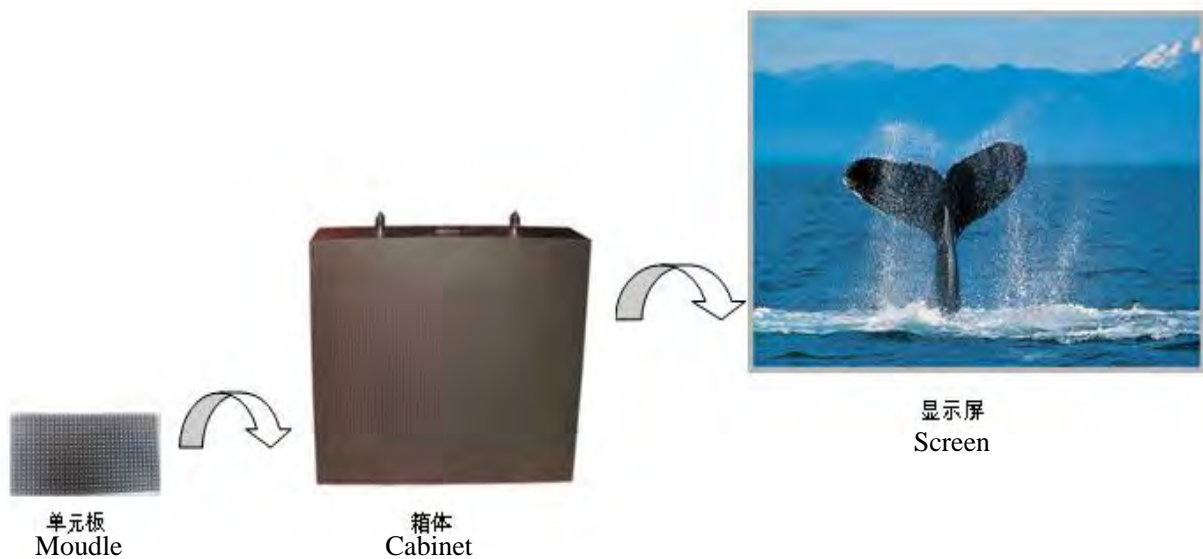


Screen Back

3) : Connecting screen power (input line) and network cable (signal input):



Screen Back



3、Graphic card, Sending Card installation and setup

Operating Environment

- ◆ **Operating system**
Chinese/English Windows98/me/2000/NT/XP
- ◆ **Hardware Configuration**
Pentium 300MHz or above
ROM: 64M
Graphics Card: Standard VGA 256mode or above
- ◆ **Related Software**
Microsoft Media player compulsory
OFFICE2000—in case of *. doc files
RealPlayer—in case of RealPlayer files

Operation steps:

- 1、 Put graphic card with DVI output into motherboard slot before starting PC



Sending card



Graphic card with DVI output

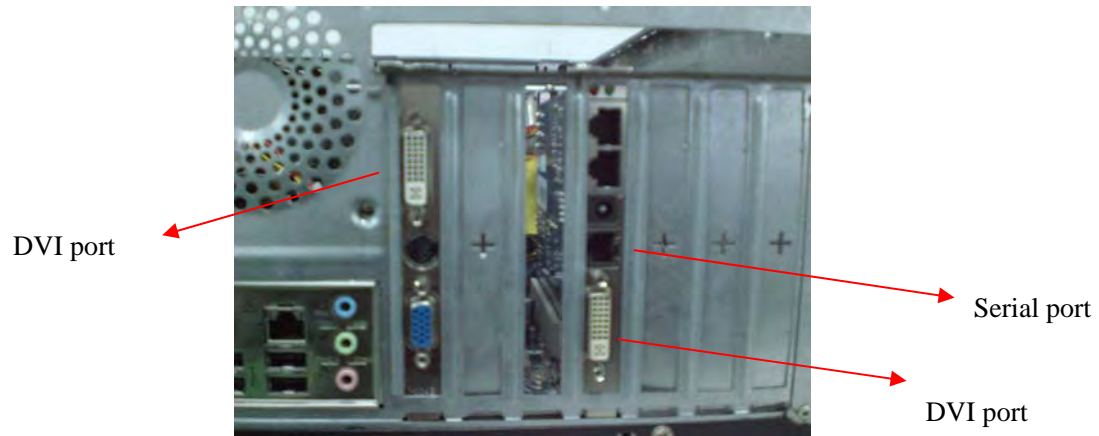


DVI LINE

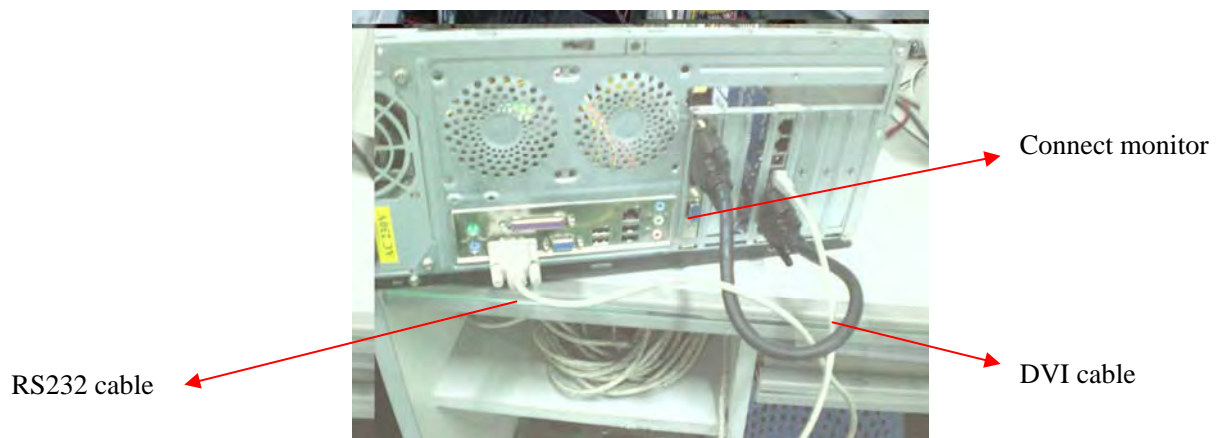


RS232 LINE

- 2、 Turn on PC
- 3、 Enter graphic card installation directory, and then choose the correspondent graphic card drive, and then double click to install it according to the instruction.
- 4、 After finish the installation, please close the PC by hand.
- 5、 After closing the PC, please put the sending card into PCI slot in motherboard.(Please don't use the DVI cable to connect Sending card with graphic card before starting the PC.)



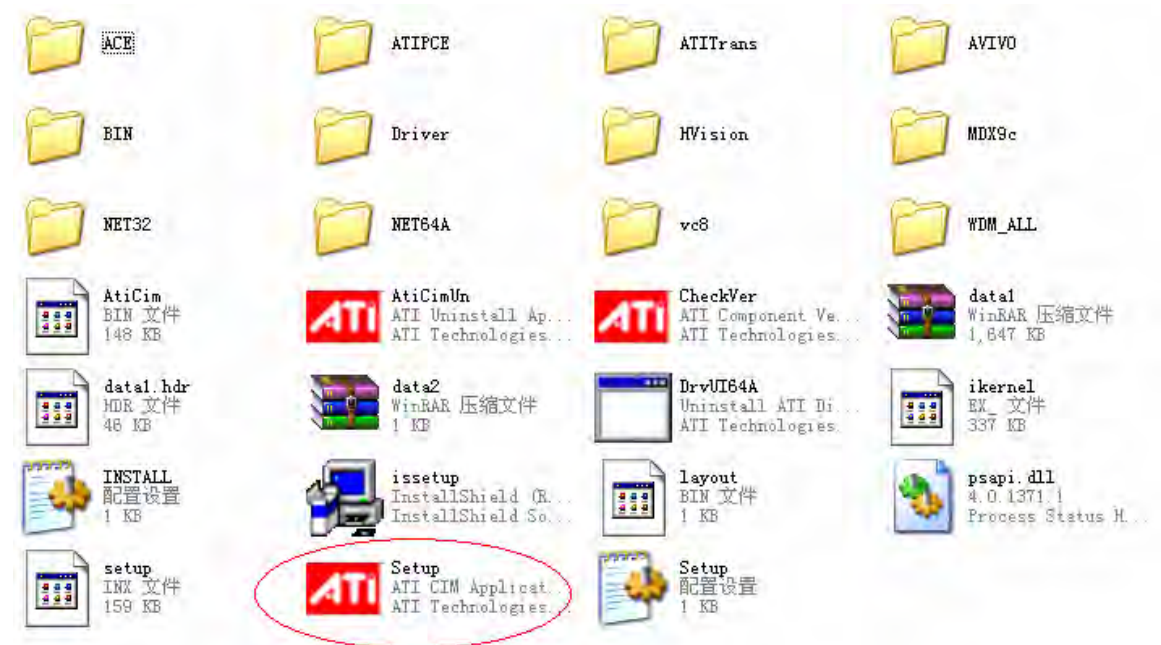
- 6、 Turn on PC
- 7、 Connecting sending card with graphic card through DVI cable, and combining sending card with PC serial port through serial cable (RS232)



二、 Graphics card setup

1、 If you want to install the ATI graphics card , please click “SETUP”

Double click “setup”begin setup



2; After the intallation is completed,click “catalyst control center”

setup done Double click”catalyst control center”



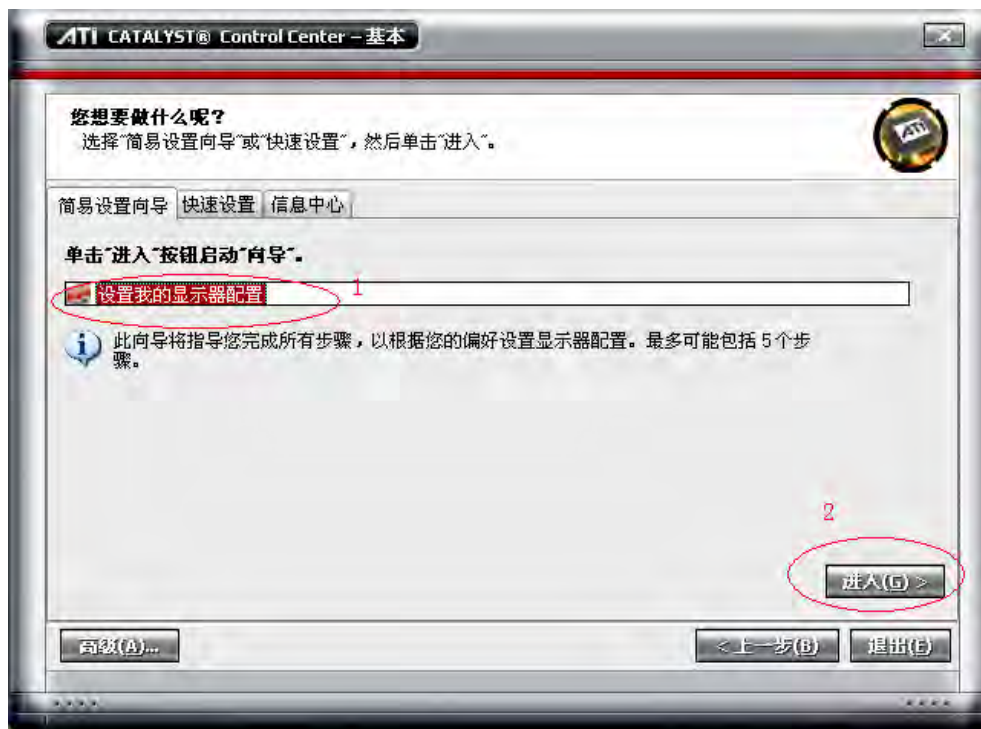
3、 Select the baqsic/simple setup wizard

choice “Basic{Easy Setup wizards and Quick Settings}

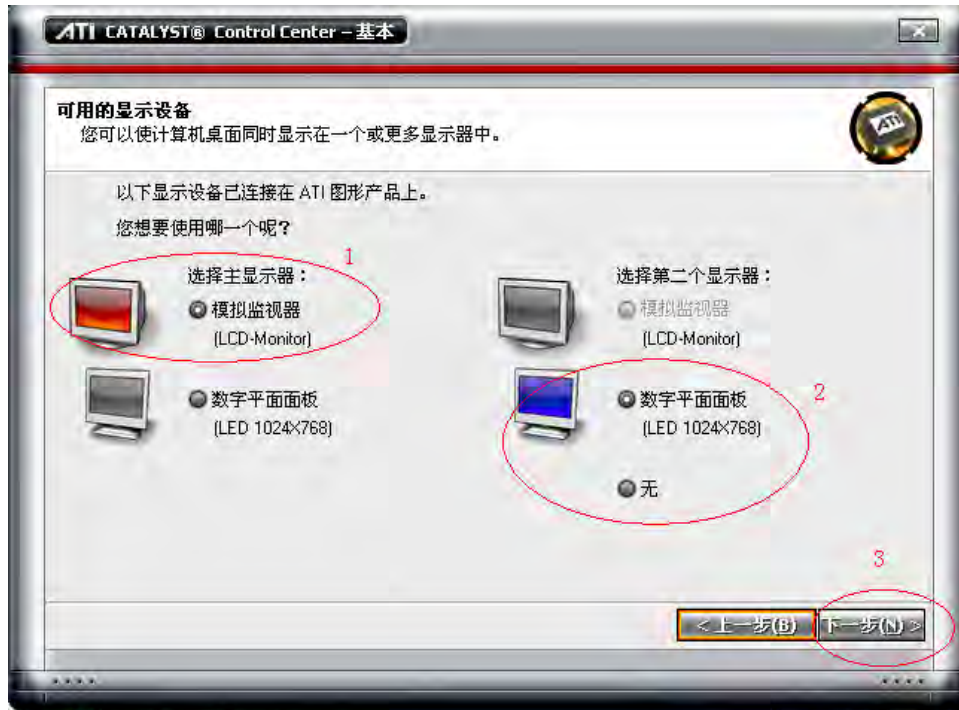
Click Next to continue



4, The fourth:
 setup my display configuration Click “Go” to continue



5、The five
 i). Available Display Devices:
 Choose main display Click “Analog Monitor” {Lcd-Monitar}
 Click “Digital Flat Panel” {Led 1027x768}
 Click “Next” to continue



The six

6、Select a Desktop Mode

Click :Clone">{Current Mode}

Click “Next” to continue

The Seven

7、Display Setings for Desktop Viewing

Desktop 1 is the main adapter(open:using and the main adapter),drag desktop 2 to the right
Of desktop 1.

Main: Lcd-Mantior And Clone:Led 1024x768

Desktop Area:1024x768

Click “Finish” to Succeed



A、monitor management

Desktop 1 (start-up(✓)、main monitor(✓))

B、Desktop and monitor setup

Desktop 1 + Desktop 2

Click “OK” to continue



8

8、A、Display manager

Desktop and Display setup :

{ main+copy}

2 start-up(✓)

B、Desktop2 monitor setup

Led 1024x768 {Explant} color {32bit} reftesh rate {60HZ}

C、Click “OK” to continue

三、LED studio installation

1). Please insert Led studio CD into PC CD-COM, and will pop-up installation dialog box. (If no dialog box pop-up, please double click the CD after select it.) As shown in below figure 4-1.



Figure 4-1

2). Choose “Install Led studio” to start installation guidance, as shown in below figure 4-2. And the serial no. is 888888.

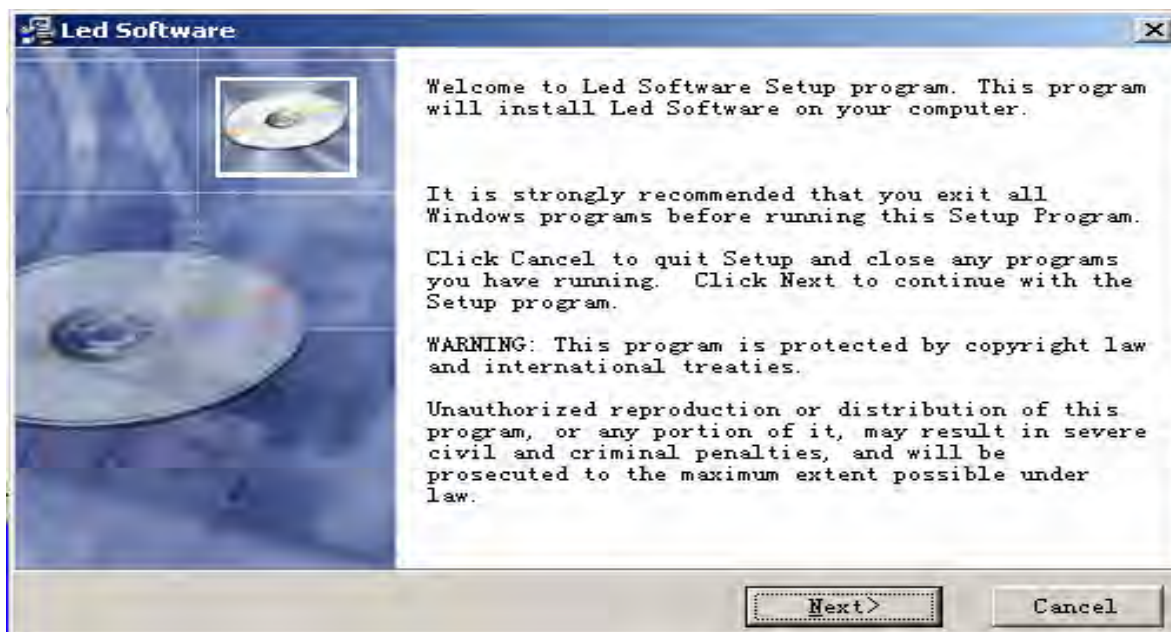


Figure 4-2

3. After “LED Studio” software has been successfully installed, there will be a “LED Software” program group in the 【Start】/【Program】 ,then move to the “LED Software” under this program group, click to start. As shown in figure 4-3 Also, there will be a “LED Studio” short-cup on your



be a “LED Studio” short-cup on your desktop: as shown in figure 4-4: LedStudio. Also, you can start the program by double click on the icon.

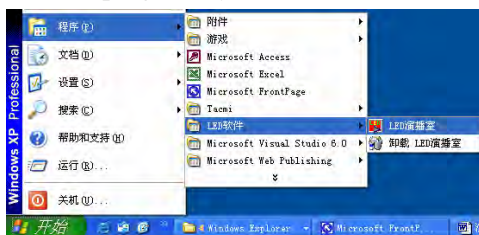


Figure 4-3

LedStudio



Figure 4-4

4.connect network cable between screen and computer, plug in power cable, opening led studio software.

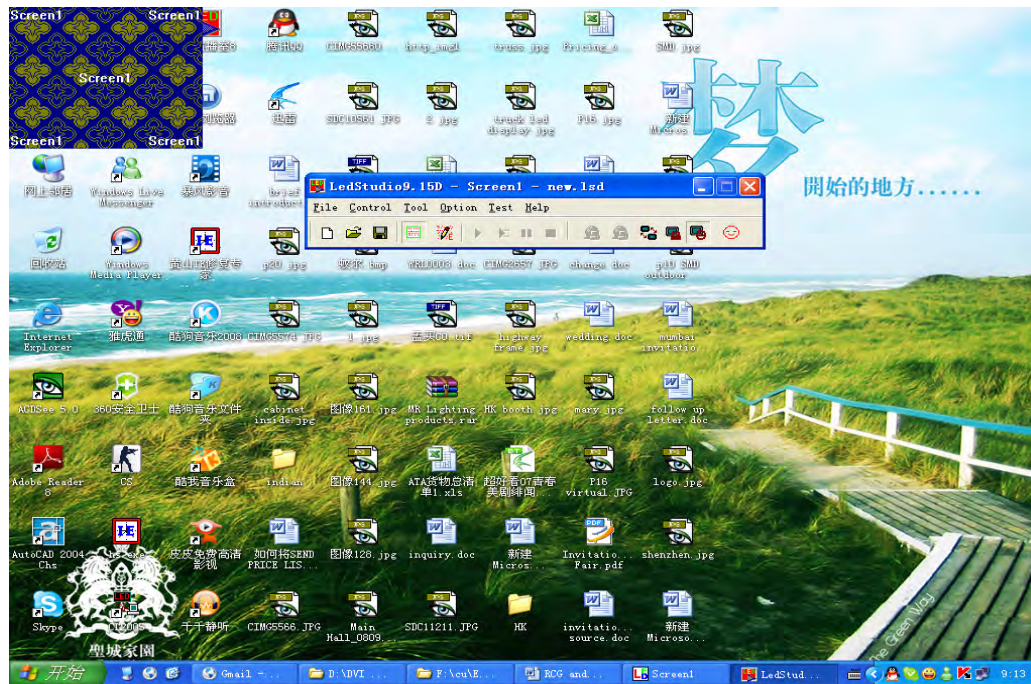


Figure 1

5.go to software setup, as shown in Figure 2



Figure 2

6.click on it, figure 3 will show up

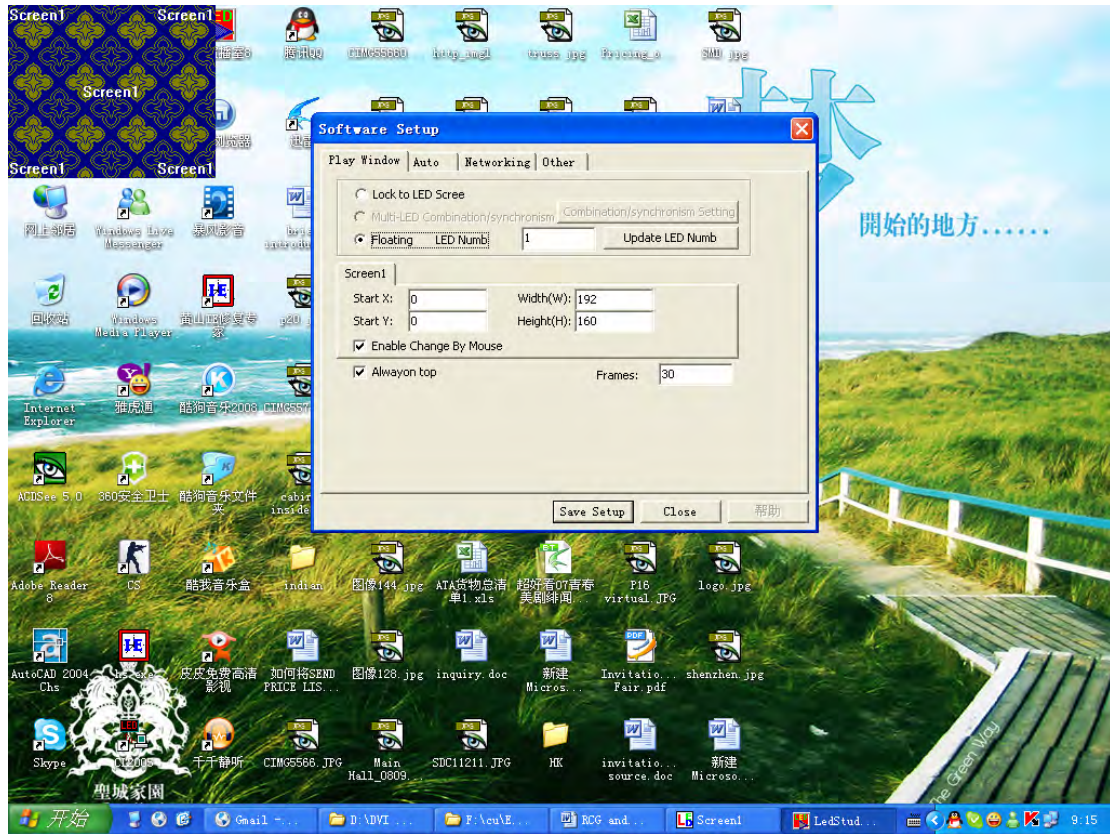


Figure 3

7.in this window, type “ linsn”, Figure 4 will come ask u for password, pls type “168” and u can go in.

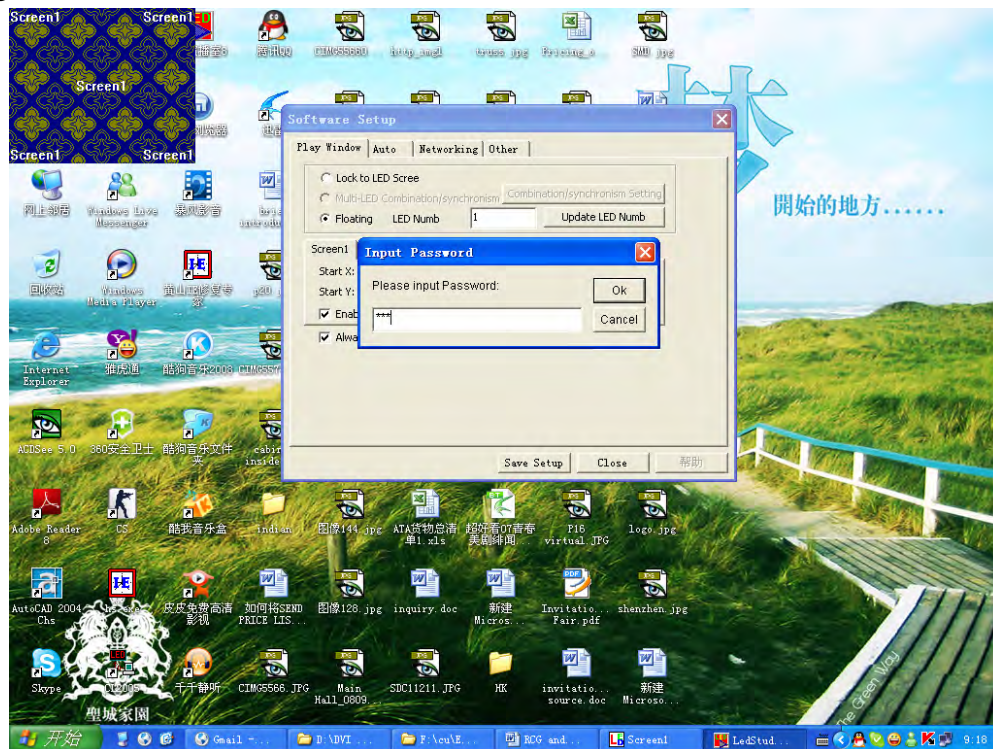


Figure 4

8.after typing in password, below figure comes.

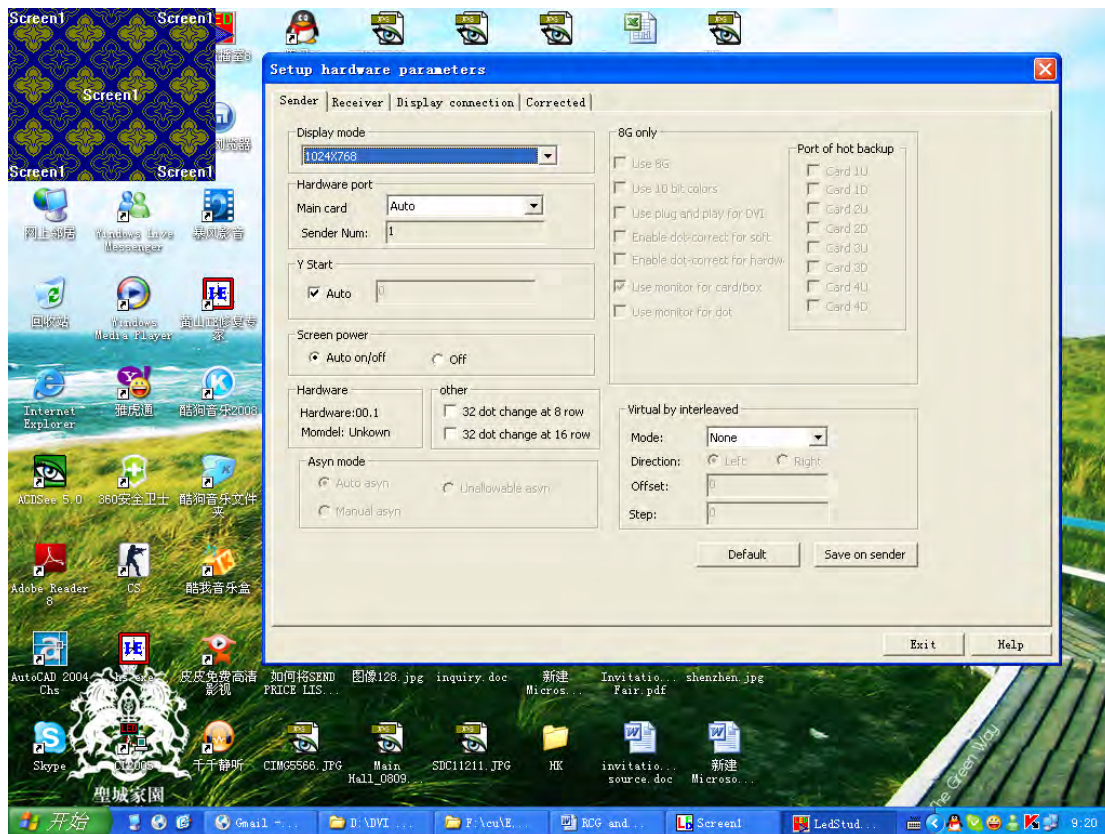
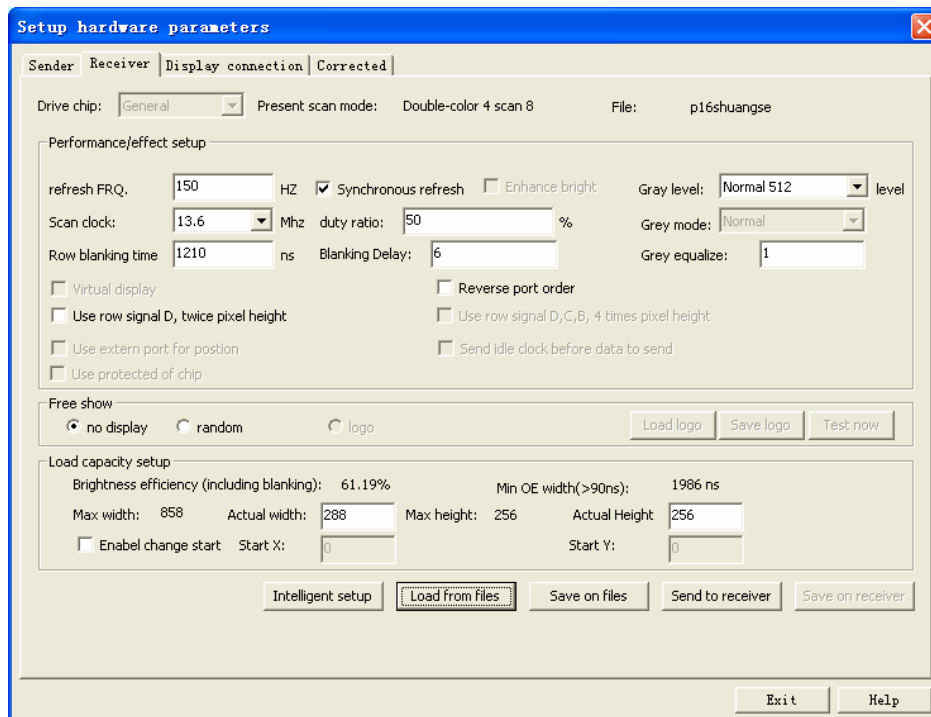


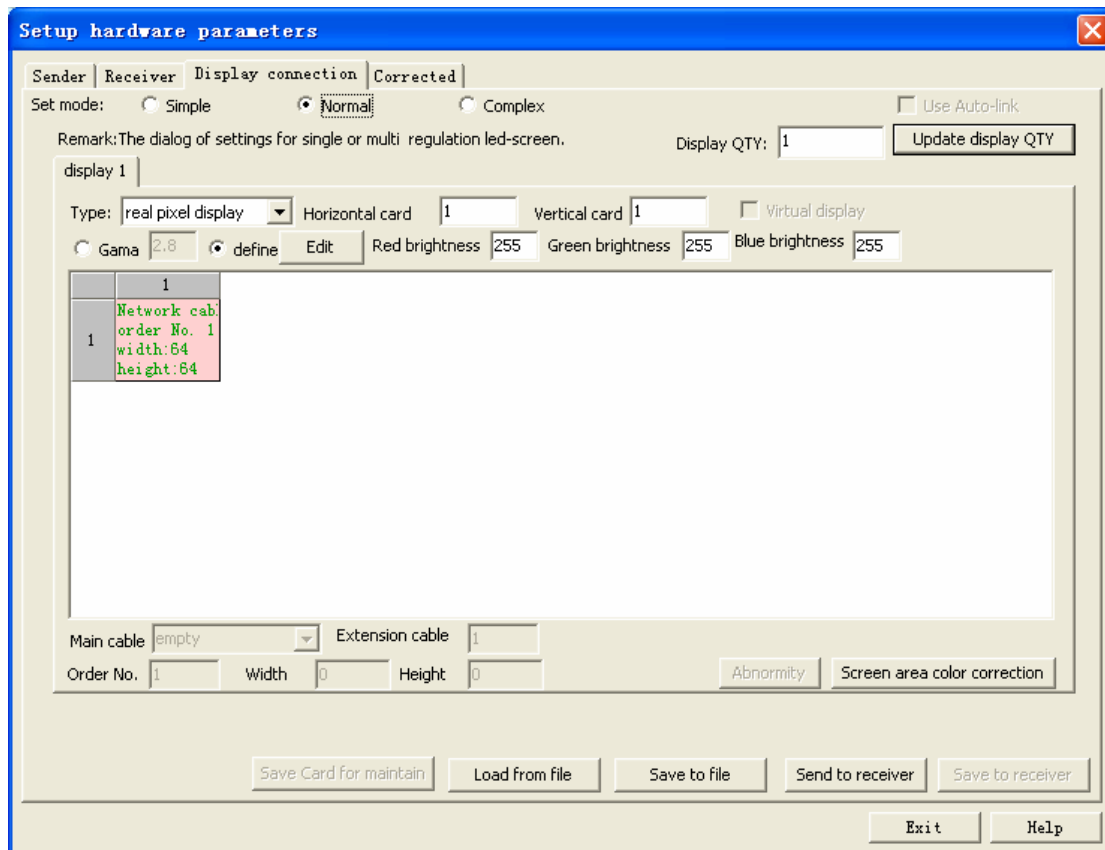
Figure 5

9. go to receiver tab, and u will see “load from file” in the bottom, click on it and then it asks u for rcg file, pls use the rcg file I save on the CD. click on” send to receiver” and then click on “ save on receiver.



10. go to display connection tab, and u will see “load from file” in the bottom, click on it and then it asks u for con file, pls use the con file I save on the CD. click on” send to receiver” and

then click on “ save on receiver. Exit, and click on save setup, now u have done led studio setting.



1. now u have finished led studio setting, click on arrow edit like figure 1



Figure 1

2. in the coming window, click on the one below screen 1.

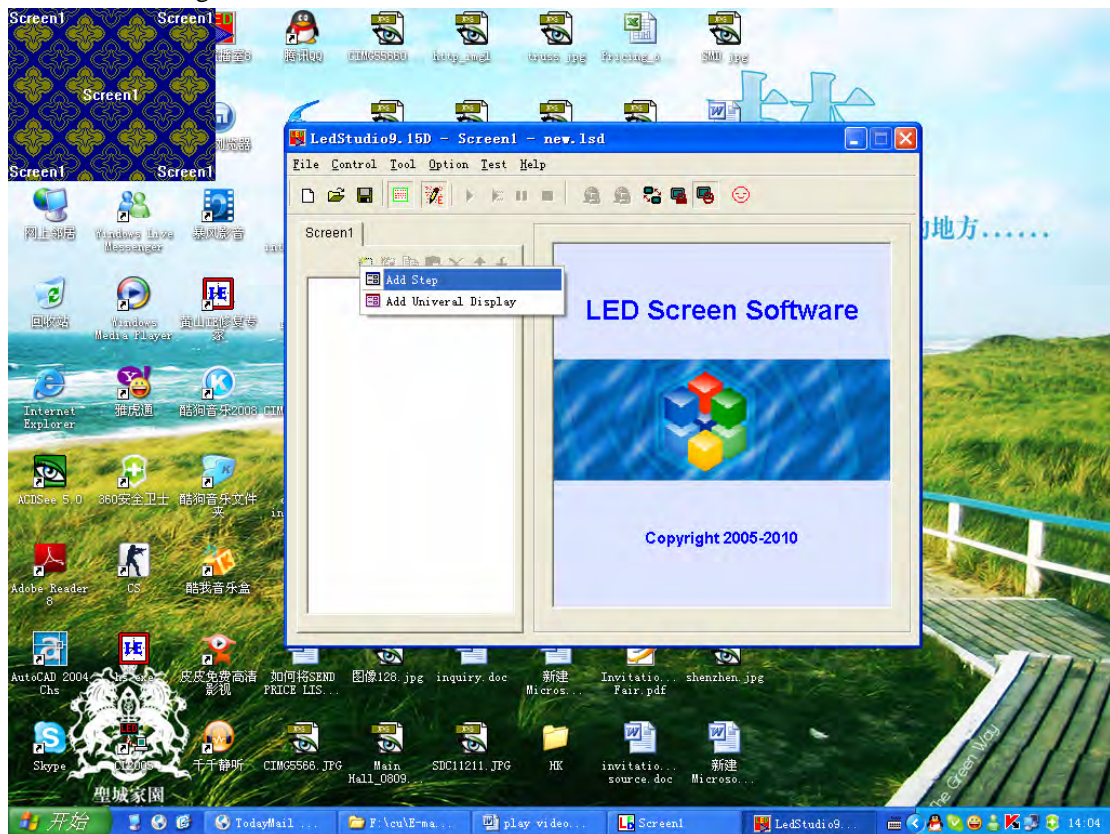


Figure 2

3. click on “add step”, figure 3 will show up

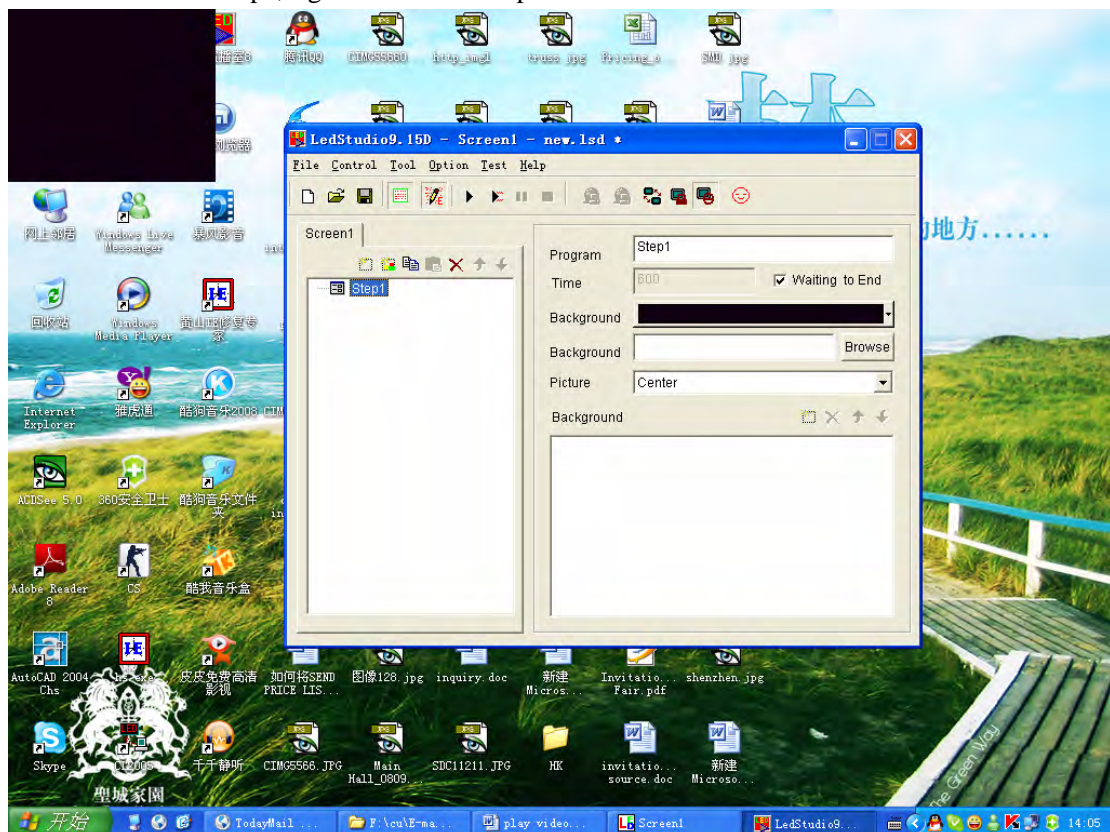


Figure 3

4. click on “new window”

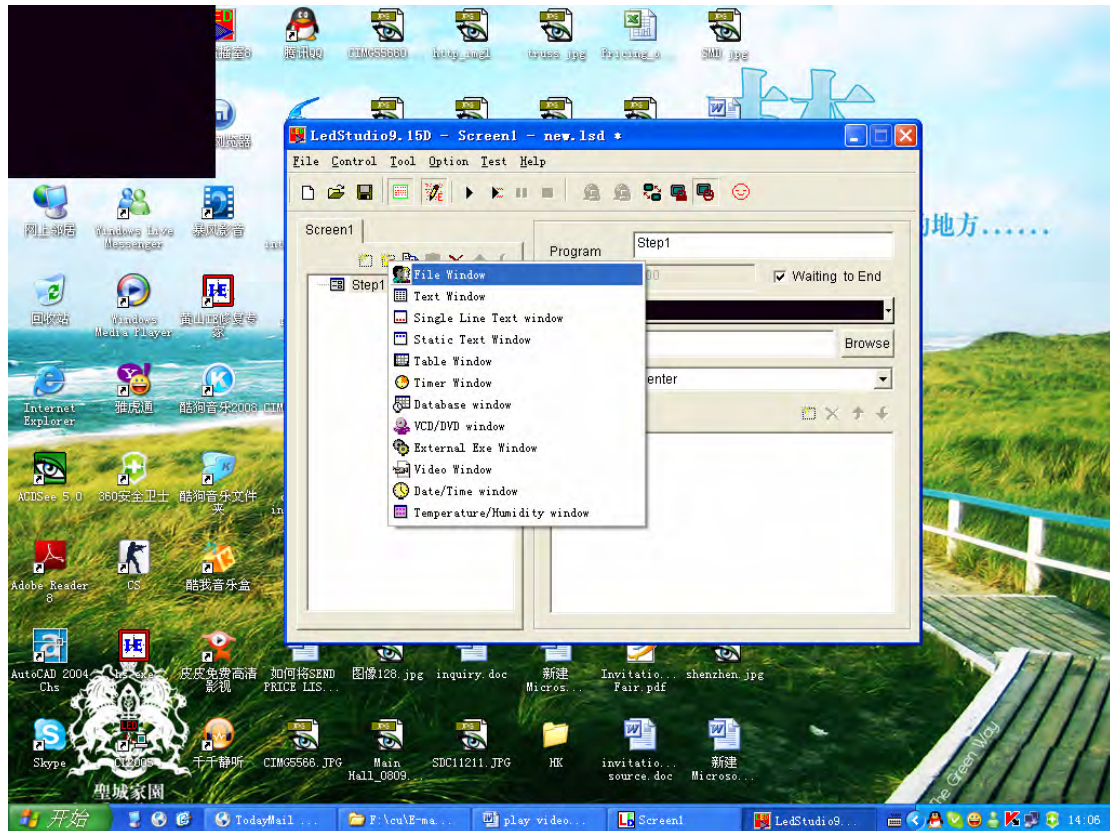


Figure 4

5. click on “file window” figure 5 comes

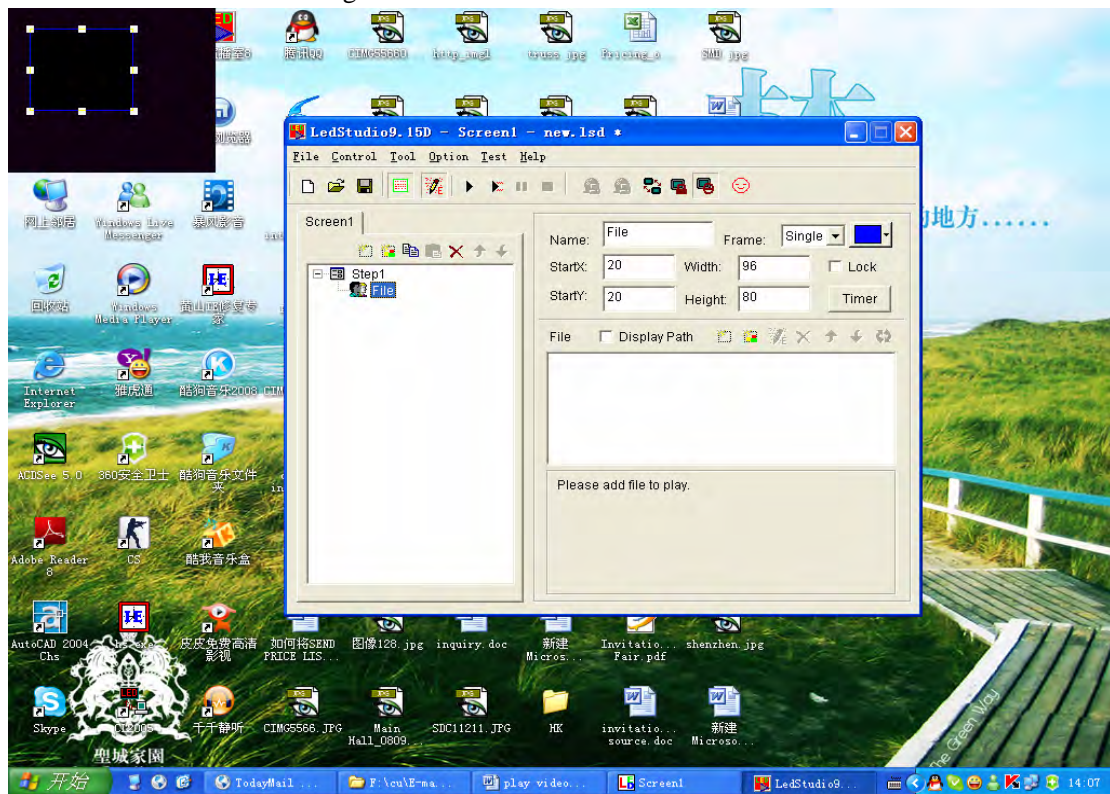


Figure 5

6. go to the blue box in the upper screen background. Right-click, go to “ the size” and click on full window.

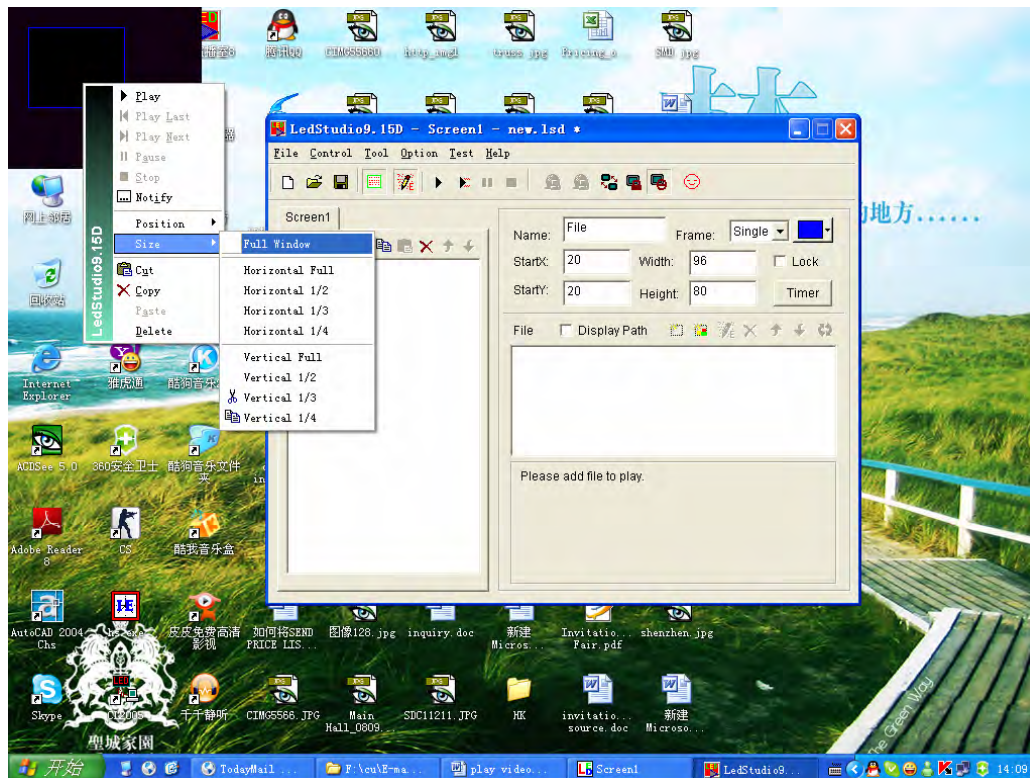


Figure 6

7. click on the one besides display path, figure 7 shows

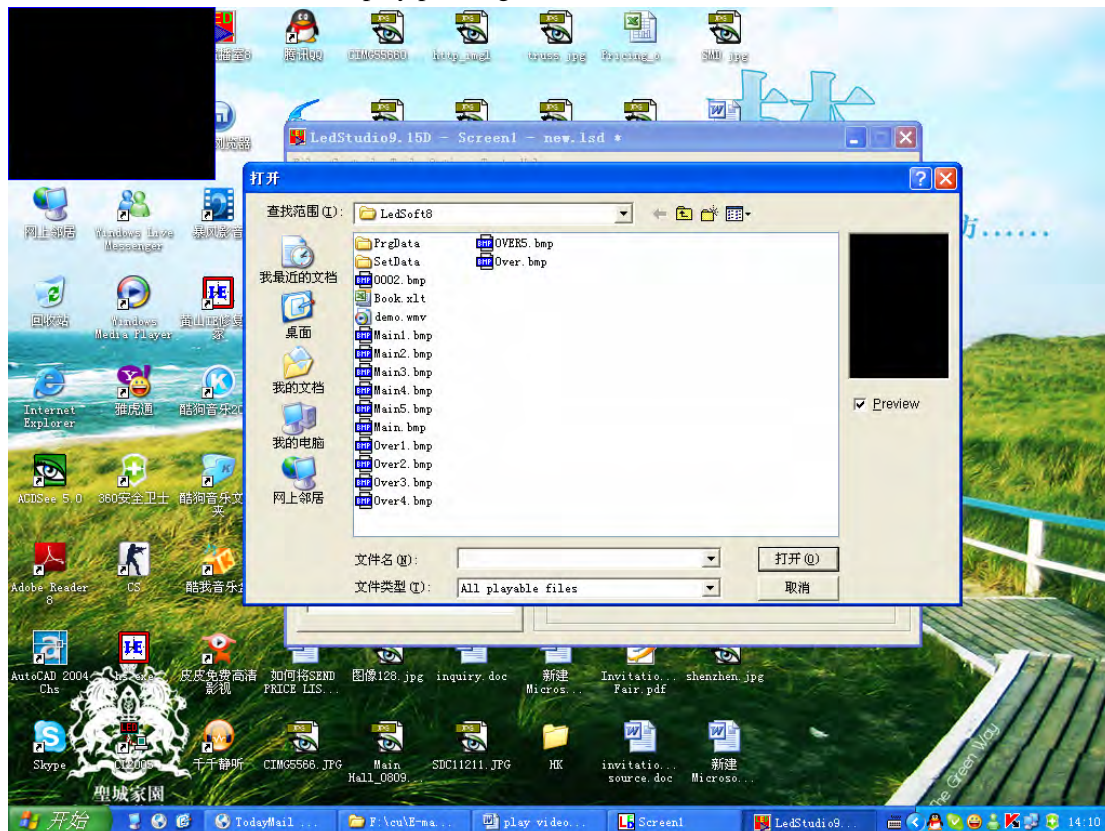


Figure 7

8. click on the one u want to play on the screen, and click on open, then the screen will show up the one u want to play.(for details, u can read led studio user's manual)



Federal Communication Commission Interference Statement

This equipment has been tested and found to comply with the limits for a Class B digital device, pursuant to Part 15 of the FCC Rules. These limits are designed to provide reasonable protection against harmful interference in a residential installation. This equipment generates, uses and can radiate radio frequency energy and, if not installed and used in accordance with the instructions, may cause harmful interference to radio communications. However, there is no guarantee that interference will not occur in a particular installation. If this equipment does cause harmful interference to radio or television reception, which can be determined by turning the equipment off and on, the user is encouraged to try to correct the interference by one of the following measures:

- 1) Reorient or relocate the receiving antenna.
- 2) Increase the separation between the equipment and receiver.
- 3) Connect the equipment into an outlet on a circuit different from that to which the receiver is connected.
- 4) Consult the dealer or an experienced radio/TV technician for help.

This device complies with Part 15 of the FCC Rules. Operation is subject to the following two conditions: (1) This device may not cause harmful interference, and (2) this device must accept any interference received, including interference that may cause undesired operation.

FCC Caution: Any changes or modifications not expressly approved by the party responsible for compliance could void the user's authority to operate this equipment.