



Shenzhen Cuckoo Wireless Co.,Ltd

User Manual

User Manual




Table of Contents


Install software	3
Connect internet	4
Statistics	4
Voice	5
Making or Receiving Call	6
Message.....	7
Message Mailbox	7
New, Delete Message	7
Reply, Forward Message	8
Write SMS.....	8
Save No	9
Phonebook.....	9
New, Delete Contacts	10
Contact Editor	10
Send Message.....	11
Search.....	11
Records	11
Settings.....	12
Ring Setting	12
SMS Setting	13
Uninstall software	13
FCC Regulations	13

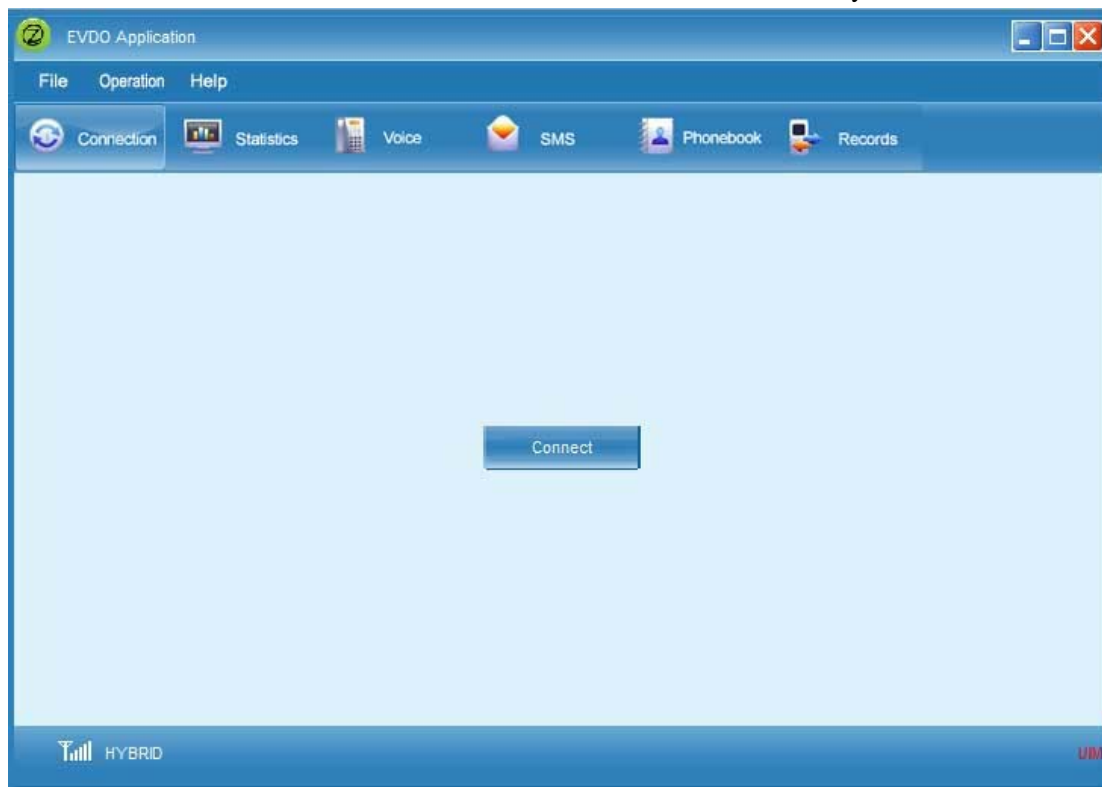
Install software

Please check the following operation under XP operation system.


1. Insert the modem into pc.
2. Enter into “my computer” you will find  ico .
3. Right-click-run automatic the ico or open the CD of Modem ED269 and double click Installation.exe file.
4. Please select "Next" in Software Installation interface.
5. Select installation directory. In the interface, the mini necessary disk space for the software installation will be displayed, please select install directory according to your practical computer situation.
6. Select additional task, and then click "Next".
7. Please click "Install" in "Ready to Install" interface.
8. While waiting for the installation, install progress is also being displayed.
9. Finish installation.

Connect internet


Press  button to connect internet. It will connect successfully as follows:

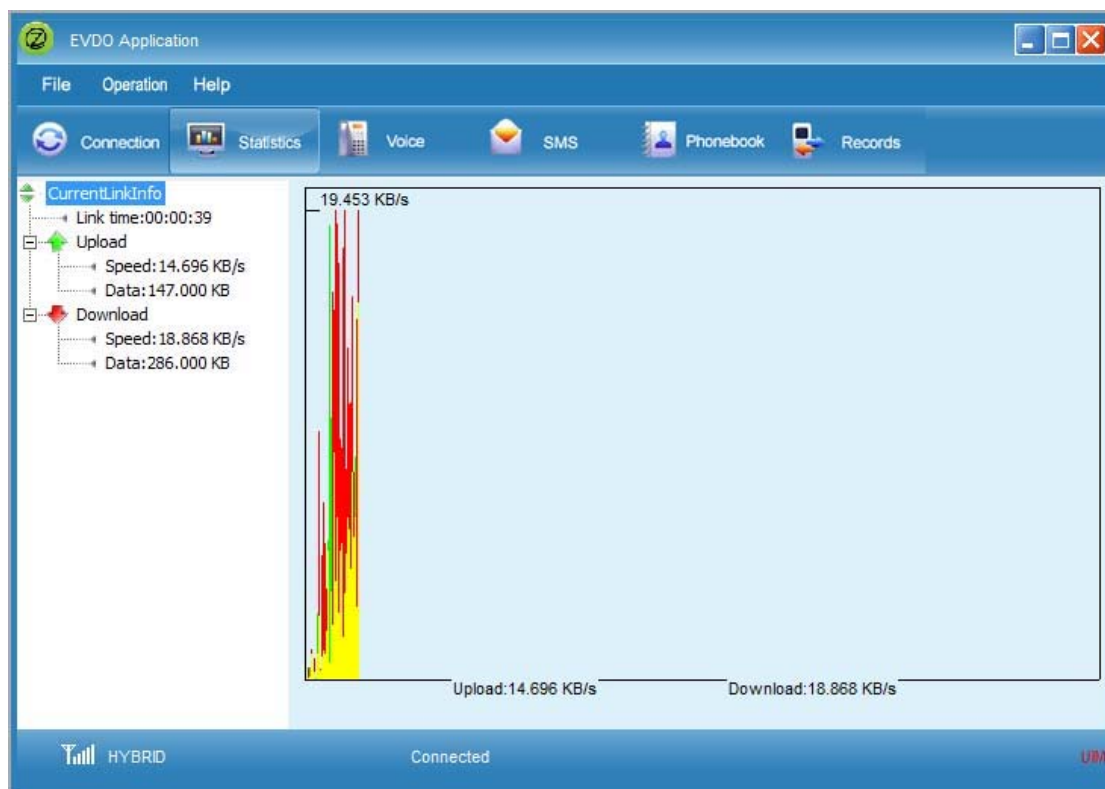


There will be a series of related information displayed in the bottom of the interface after dial-up succeeded.

Click  button to disconnect with the network


Statistics

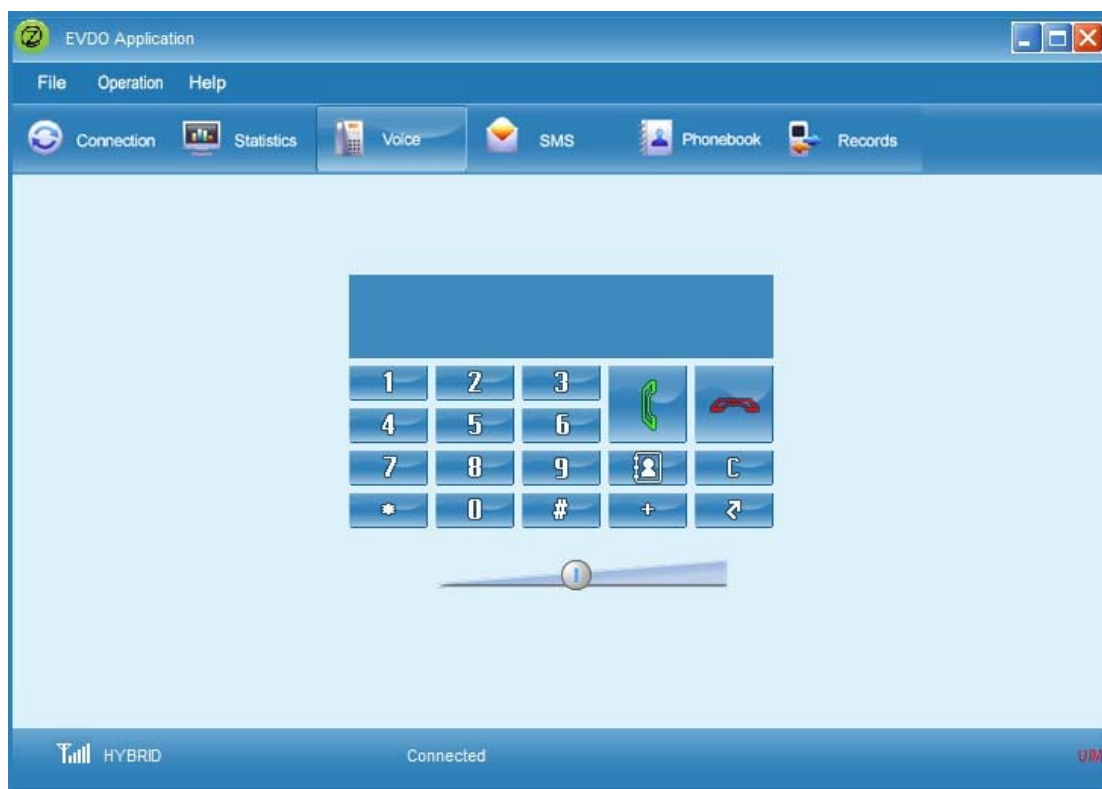
Click  button to enter statistics interface ,it can display the information about link time ,the speedup of upload and download and the data of upload and download, as follows:




Voice



Click  button to enter "Voice" interface. Here receiving and making calls as follows:




Making or Receiving Call

Enter phone number with mouse or keyboard, and answered the phone, click  for making call or receiving call;


Click  for ending the phone.

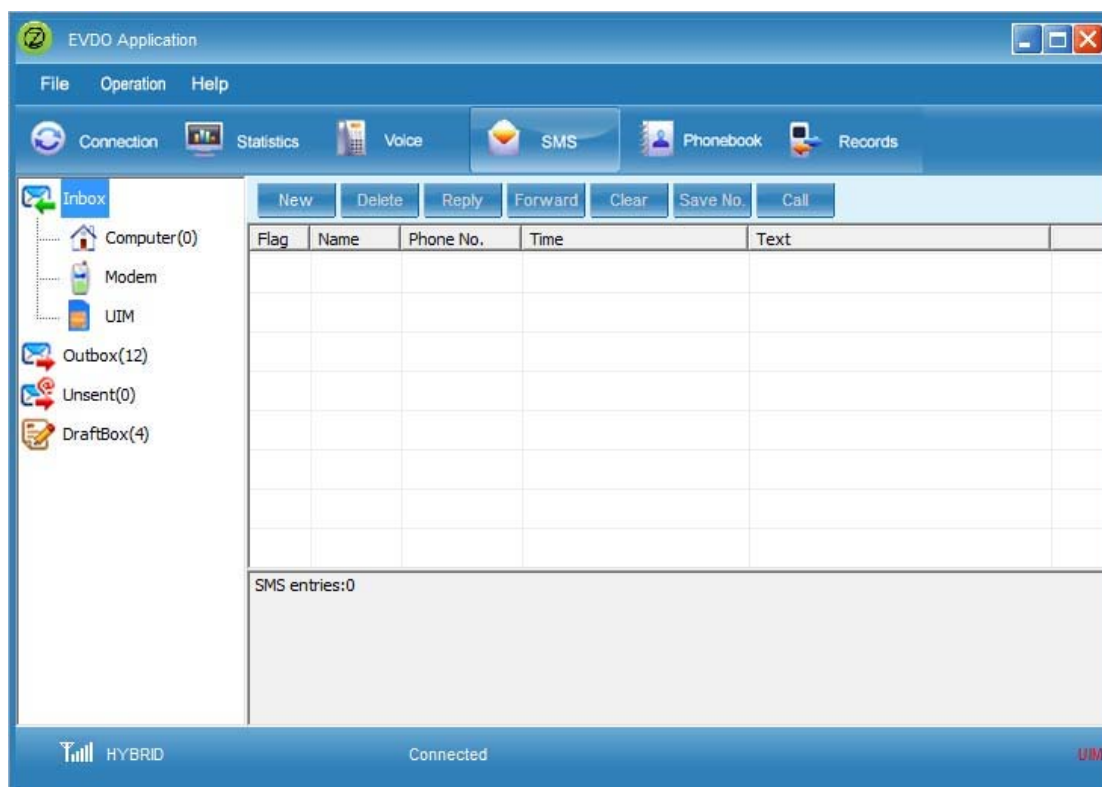
Click  for redialing phone

Click  for backspace the phone number

Click  for saving the phone number to phonebook

Message

Click  button and enter into the "sms" interface, the interface is as follows:



Message Mailbox

Click any one mailbox in the tree-node to see its messages.

Inbox: There're Modem, Computer, to store messages transferred from the inbox of the modem ,and received messages when using the software.

Outbox: It is used to store messages that have been sent successfully.

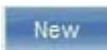
Unsent: It is used to store messages that have been sent unsuccessfully.

DraftsBox: Store messages edited with the software and ready to send. (Stored in the PC)


New, Delete Message

You can new or delete messages

New:

Click  button then the normal mode of " Write SMS " will pop-up, You can new messages .For details please refer to " Write SMS ".

Delete:

Select the messages you want to delete then click  button.

You can select  button to delete all messages in current mailbox.

Reply, Forward Message

Here, you can reply and forward the selected messages.

Reply:

Select messages you want to reply,then click  button, the normal mode of "Write SMS" will pop-up.

In the " Write SMS", the phone number of address has been inputed into "Recipient", just input the message content and send it.

Forward:


Select messages you want to forward, click  button, the normal mode of " Write SMS " will pop-up.

In the " Write SMS", just input phone number into Send to and send out the message. You can also edit the message content before send.

For details, please refer to: " Write SMS ".

Write SMS

We will introduce the normal mode of "Write SMS", with which you can edit and send messages easily.

Recipient: Input phone number here. You can click  to enter into "Select Contacts"

window to select contacts saved in computer, and in Modem, after click OK, the selected phone number and their names will be shown in the input field next to "Send ". If there are several phone numbers, they would be separated by ";"


SMS Content: input the content of message that will be sent

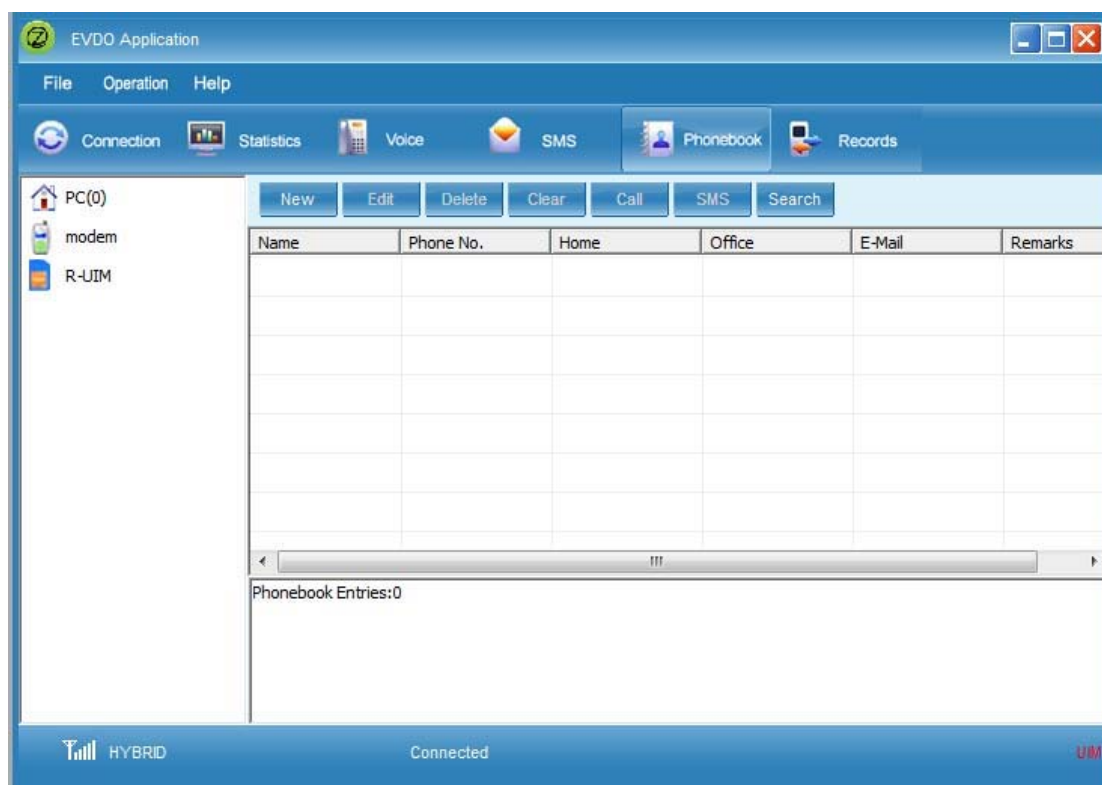
Save: You can save the edited messages.

Save No

You can select one message, then click  button to save the phone number.

Phonebook


Click  button to enter "Phonebook" interface. There are "Modem" and "Computer" as follows:



New, Delete Contacts

You can new or delete contacts with function button..

New:

Click  button to enter Contact editor.

Input the correct information in the editor and press “OK” button.

For details, please refer to: “Contact editor”.

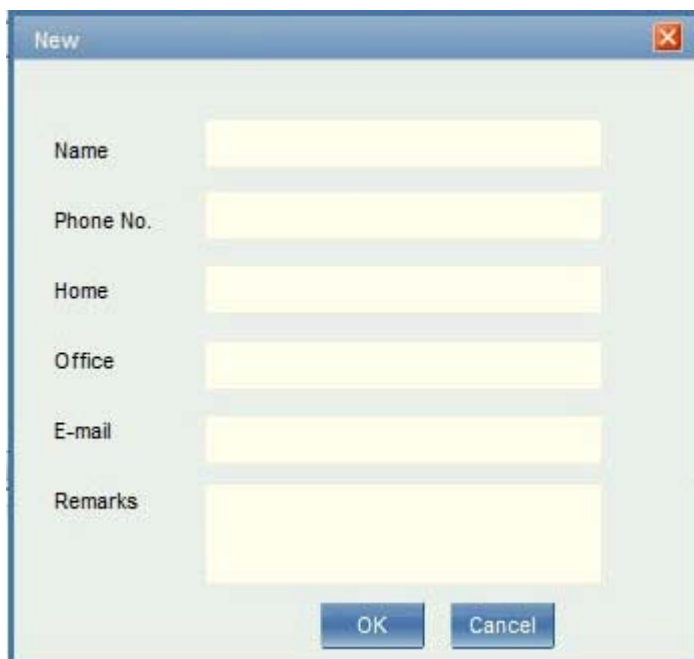
Delete:

Choose the contacts to be deleted, then press  button.

You can select  button to delete all contacts in current mailbox.

Contact Editor

New or edit contacts will enter "Contact editor" interface, with which you can new or edit the contact stored in the Computer contact



The image shows a software window titled "New" with a close button in the top right corner. The window contains several input fields for contact information: "Name", "Phone No.", "Home", "Office", "E-mail", and "Remarks". Each field is represented by a yellow rectangular box. At the bottom of the window, there are two buttons: "OK" and "Cancel".

Please input corresponding information in each field.

Send Message



You can send messages to the select contacts or the whole group.

Click  button to enter "SMS Editor" after contacts are selected.


You can send the message directly by pressing  after finish editing it in "Write SMS".

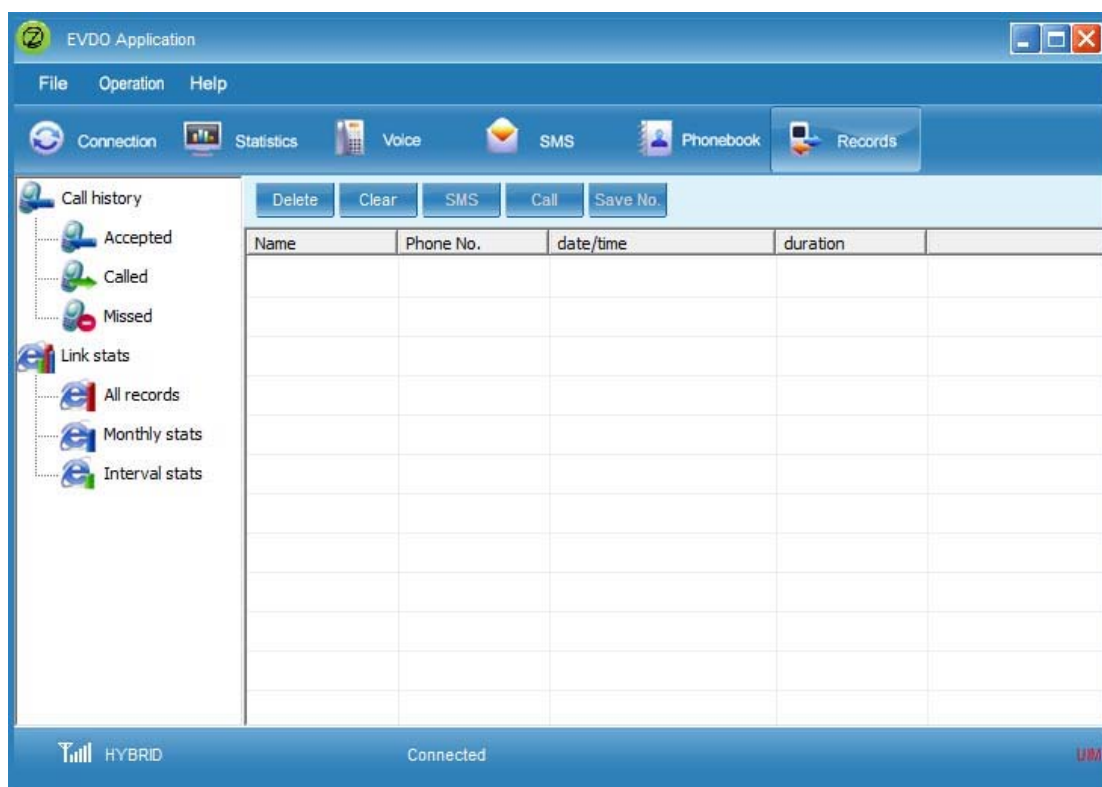
Search

You can search the items with special condition.

Click  button ,then input the search condition into the dialog of editor and press  button..

Records

Click  button to enter records interface, it can display the information about call history and link stats time, as follows:



Settings

Enter into File->Settings, you can open Settings window.


Mode Selection: you can set the mode when connecting the net.

EVDO: Select it, you will access network in a higher rate.

CDMA1X: Select it, you will access network with the mode of CDMA1X.

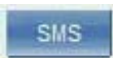
Hybrid (EVDO & CDMA 1X): Select it, you will access network with the mode mixed with EVDO and CDMA1X.

Ring Setting

Click  button to enter Ring setting interface

SMS: set the ring of incoming message.

SMS Setting

Click  button to enter Ring setting interface

Priority: set the Priority of message. you can set one of four statuses: Normal ,Interactive, Urgent and Emergency.

Storage: set the place where the message will be restored. Message can restore in pc or Modem.

Uninstall software

If you want to uninstall the software, you can use one of the following methods:

1. Go to "Add or delete program" in Control Panel to uninstall the software.
2. Run uninstall program (unins000.exe) under the software installation directory.
3. Run uninstall program in "Start" menu of Windows System.

Note: You need to delete the files manually that have not been deleted automatically.

FCC Regulations

●This modem complies with part 15 of the FCC Rules. Operation is subject to the following two conditions: (1) This device may not cause harmful interference, and (2) this device must accept any interference received, including interference that may cause undesired operation.

Changes or modifications not expressly approved by the party responsible for compliance could void the user's authority to operate the equipment.

► RF Exposure Information (SAR)

This modem meets the government's requirements for exposure to radio waves.

This modem is designed and manufactured not to exceed the emission limits for exposure to radio frequency (RF) energy set by the Federal Communications Commission of the U.S. Government.

The exposure standard for wireless modems employs a unit of measurement known as the Specific Absorption Rate, or SAR. The SAR limit set by the FCC is 1.6W/kg. *Tests for SAR are conducted using standard operating positions accepted by the FCC with the modem transmitting at its highest certified power level in all tested frequency bands. Although the SAR is determined at the highest certified power level, the actual SAR level of the modem while operating can be well



below the maximum value. Because the modem is designed to operate at multiple power levels so as to use only the power required to reach the network. In general, the closer you are to a wireless base station antenna, the lower the power output.

The highest SAR value for the modem as reported to the FCC when tested for use at the body, as described in this user guide, is 0.547 W/kg (Body-worn measurements differ among phone models, depending upon available enhancements and FCC requirements.)

While there may be differences between the SAR levels of various phones and at various positions, they all meet the government requirement.

The FCC has granted an Equipment Authorization for this modem with all reported SAR levels evaluated as in compliance with the FCC RF exposure guidelines. SAR information on this modem is on file with the FCC and can be found under the Display Grant section of <http://www.fcc.gov/oet/fccid> after searching on FCC ID: ZVFBUGU201101.

For body worn operation, this modem has been tested and meets the FCC RF exposure guidelines with the minimum distance of 0.5 cm from the body. Use of other enhancements may not ensure compliance with FCC RF exposure guidelines.