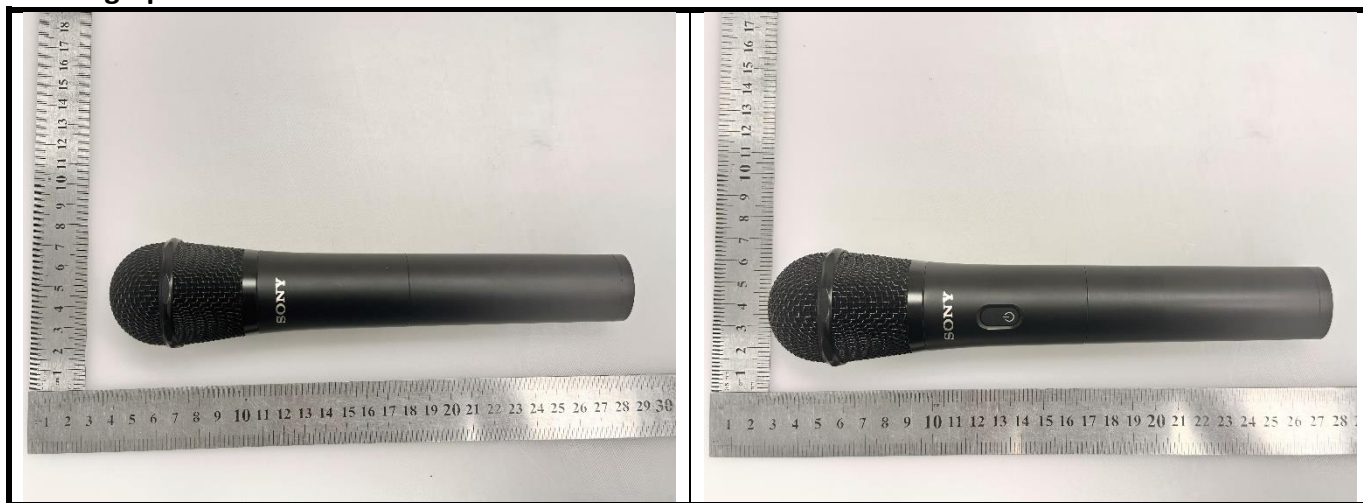
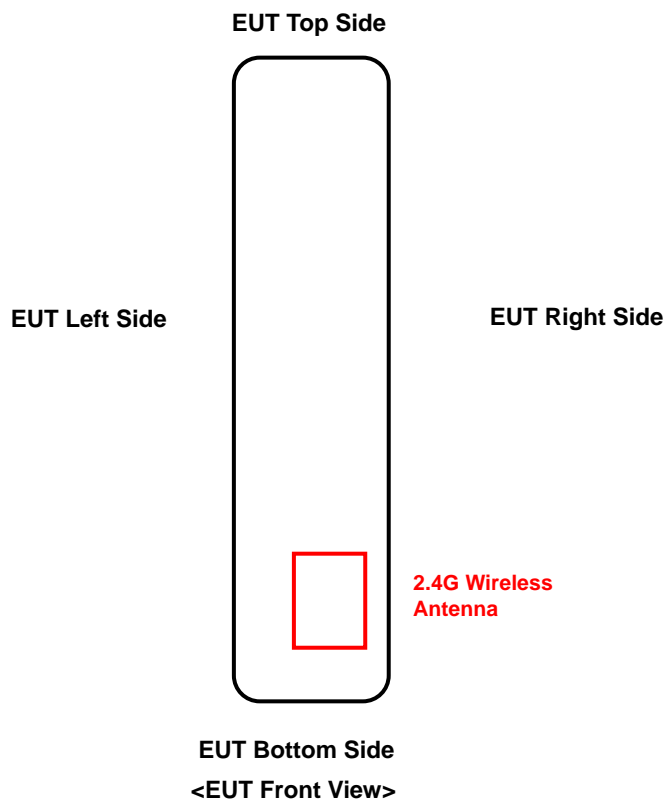


### <Photographs of EUT>



### <Antenna Location>



The separation distance for antenna to edge:

Antenna	To Left Side (mm)	To Right Side (mm)	To Top Side (mm)	To Bottom Side (mm)	To Front Side (mm)	To Rear Side (mm)
2.4G Wireless	21.4	5.6	206	14.9	13.6	20.3

**<Photographs of SAR Setup>**



**Front Side (EUT with 0 cm Gap)**



**Curved surface of Left (EUT with 0 cm Gap)**



**Curved surface of Right (EUT with 0 cm Gap)**



**Rear Side (EUT with 0 cm Gap)**



**Left Side (EUT with 0 cm Gap)**



**Right Side (EUT with 0 cm Gap)**



Top Side (EUT with 0 cm Gap)



Bottom Side (EUT with 0 cm Gap)