



# WIFI VISUAL INTERCOM DOORBELL

WIFI



WIFI VISUAL INTERCOM DOORBELL

This device complies with part 15 of the FCC Rules. Operation is subject to the following two conditions: (1) This device may not cause harmful interference, and (2) this device must accept any interference received, including interference that may cause undesired operation

Note: This equipment has been tested and found to comply with the limits for a Class B digital device, pursuant to part 15 of the FCC Rules. These limits are designed to provide reasonable protection against harmful interference in a residential installation. This equipment generates uses and can radiate radio frequency energy and, if not installed and used in accordance with the instructions, may cause harmful interference to radio communications. However, there is no guarantee that interference will not occur in a particular installation. If this equipment does cause harmful interference to radio or television reception, which can be determined by turning the equipment off and on, the user is encouraged to try to correct the interference by one or more of the following measures:

- Reorient or relocate the receiving antenna.
  - Increase the separation between the equipment and receiver.
  - Connect the equipment into an outlet on a circuit different from that to which the receiver is connected.
  - Consult the dealer or an experienced radio/TV technician for help.
- Any Changes or modifications not expressly approved by the party responsible for compliance could void the user's authority to operate the equipment.

This equipment complies with FCC radiation exposure limits set forth for an uncontrolled environment.

1、Introduce of product .....	1
2、Installation .....	2
3、Port definition .....	3
4、Operate Explanation .....	4
5、Doorbell Setting .....	5
5.1、Add doorbell settings .....	5
5.2、System settings .....	6
5.3、White list settings .....	7
5.4、Alarm settings .....	8
5.5、Equipment clock settings .....	9
5.6、Interface settings .....	9
5.7、Wifi settings .....	10
6、Introduce of functions .....	11
6.1、Intercom .....	11
6.2、Monitor .....	12
6.3、Real-time Alerts .....	13
6.4、Video replay .....	14
6.5、Local pictures .....	15
6. 6、Visitors/Alarm record .....	16
7、Software system settings .....	17
8、Specification of product .....	18
9、Components .....	19

## 1 . Introduce of product

Wifi Visual intercom doorbell is a doorbell with wifi connected camera . It connect with home wifi to achieve two-way intercom between doorbell and cell phone .When visitors press the doorbell ,doorbell sounds and meanwhile camera will start to work sending real-time video and call to smart phone . User receive the call and see the video to check who is outside ,can intercom with visitors and remotely unlock door etc . Wifi Visual intercom doorbell have alarm and motion detector functions, make your home security has more powerful barrier . Advance infrared light design make users can distinguish the visitors in the evening. AC/DC power supply , eliminate the troubles of frequently replacing battery .

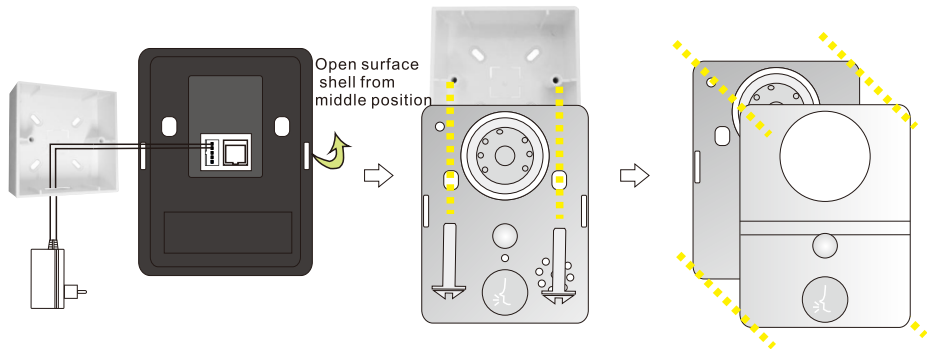
2.4G wifi transmission systems , real-time video transmission , Audio and video data transmission up to 100M at most , Support Android OS .

One doorbell can support 10 pcs cell phone at most . Make you see the outdoor anytime anywhere with wifi/3g/4g internet .

Pass CE , RoHS certification

Thank you for your support of this products , your satisfaction is our aim !

## 2、Installstion Diagram

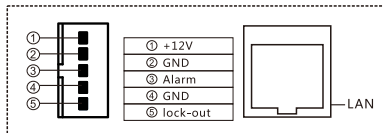
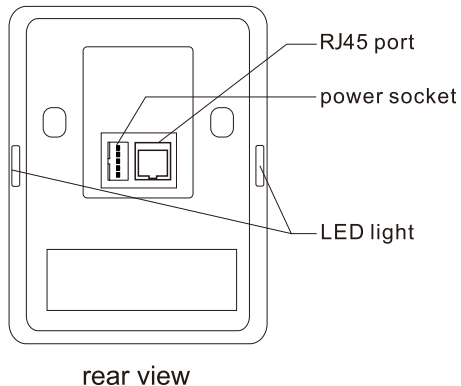
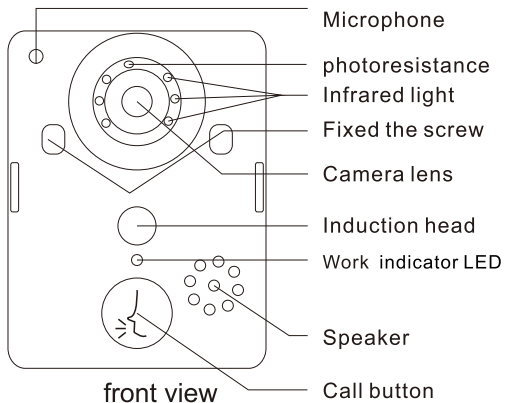


1. Switch four screws in the top part and bottom part . Open the cover from middle position ,connect 12V/1A power wire .

2. Fix the doorbell and 86 box with screws

3. Cover up the cover just opened , and install the 4 screws to finish .

### 3、Port Deflnation



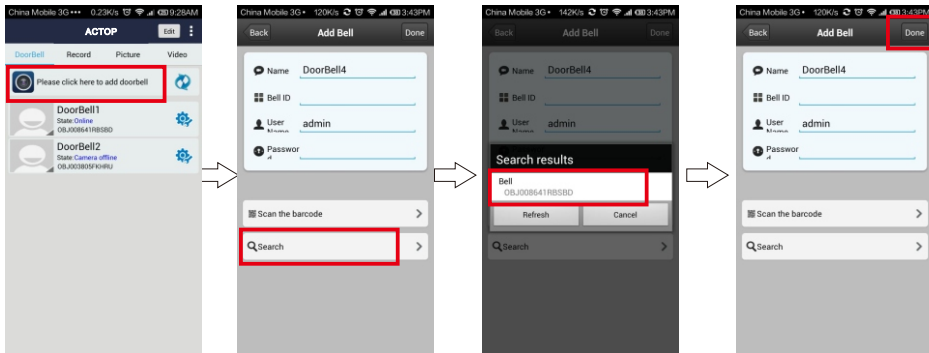
Rear connection diagram

### 三 . Operate explanation

1. According to the installation diagram and connection diagram install doorbell , connect to power and lock .
2. Wait about one minutes , after speak “successfully start system , welcome to use ” , doorbell start successful can normal working .
3. Cellphone Configuration :
  - 1.Install wifi door phone APP in cellphone . Press the doorbell button above 3 seconds , Doorbell enter in Configuration model , and give a notice “Network configuration model now , set it down in 5mins’ ’ .
  - 2.Open cell phone wifi , connect to the hot spot named “BELL-00\*\*\*\*\*” , Initial password is 123456789,.After connecting successful , open wifi door phone app again , press “ Add doorbell” , then click search or shake cellphone ,when smart phone show a ID number , Click the id number , then click “done” icon to finish.
  3. First connected cellphone Defaults to the administrator. If need to add cellphone user , set up at administrator cellphone phone .Enter into white list setting add user name and password .
4. Network Configuration :
  1. Enter into wifi settings , add home wifi ,click “done” to finish
  2. Insert internet cable to LAN port directly ,wifi setting is no need
5. Change administrator password : administrator cellphone enter into white list settings , click “admin user ” , put into password click “done” to finish .Notice :After set up administrator password , need to delete doorbell and add again by new password . Or cell phone will notice wrong password .
6. Each time connect to power, press the doorbell button above 10S , can restore factory settings .

## 5、The bell set

### 5.1、Add door bell



1.Click add door bell

2.can choose to manuallyinput,QR code scanning,or LAN search to find the door bell and add it

3.When search over LAN, pls make sure mobile phone is the same LAN with door bell device,then select the target device,regular target device name is bell(pls observe the ID number)

4.When operation is complete, click"finish"

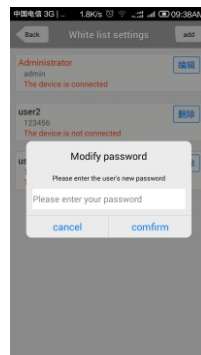
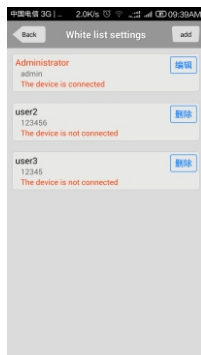
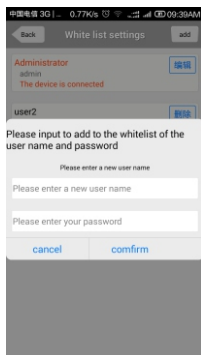


## 5.2、 System settings

- 1.Voice prompt switch : turn on or turn off . Turn on by factory settings.
- 2.Configuration mode switch: turn on or turn off .Turn on by factory settings.
- 3.Monitoring the maximum length of time : Range from 10 to 300 S.
- 4.Call maximum length of time: Range from 10 to 300 S.
- 5.Call waiting the maximum length of time : Range from 10 to 30 S.



## 5.3、White list settings



1.Administrator can add and delete other cellphone user . Common cellphone user only can Modify own password .Same user log in different cell phone is not allowed .

2.Modify user password

3.Add new cellphone user

## 5.4、Alarm settings

1. When alarm turn off (Disarm ) Any alarms are not notified to cellphone

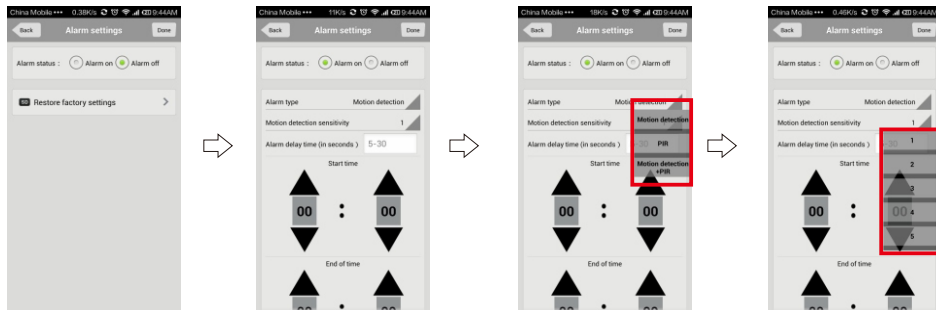
2. When alarm turn on (Arming) User can set up other parameters further

A. Alarm type : Motion detection ,PIR and so on

B. 1-5

C. Alarm delay

D. Alarm effective time

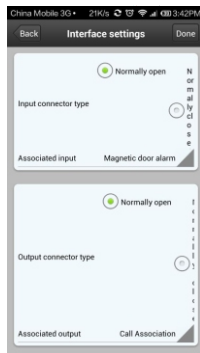


## 5.5、Equipment clock settings

According to actual situation , set correct local time .Time automatically be same with internet

## 5.6、 Port definition.

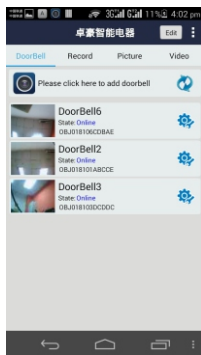
Used to define extended IO control , as well as the linkage function.



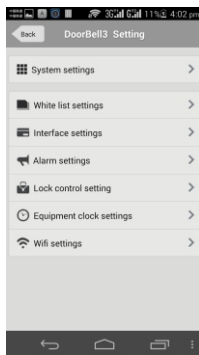
1.Equipment time setting

2. Port setting

## 5.7、WiFi settings



1.Click setting icon  
enter into setting in  
terface



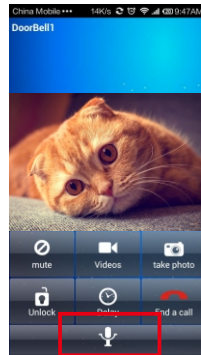
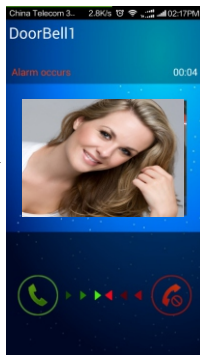
2.Click wifi setting enter  
into setting wifi



3.Doorbell will show all  
the valid routes in the list ,  
select destination routing  
(SSID)and click it to finish .

## 6、Function introduction

### 6.1、Intercom

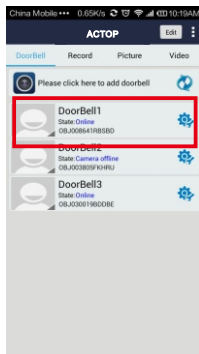


1. Visitors press the door bell

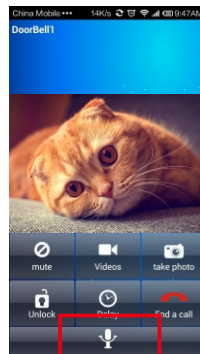
2. Slide right or left side to answer or hand up

3. Any cell phone answer it, others mobile will automatically hand up. In the process of intercom, can support taking video, picture, and remotely unlock door. Press microphone on screen to send voice to doorbell. Delay button can extend the talk time. Ending a call can press "end call" button

## 6.2、Proactive Monitor

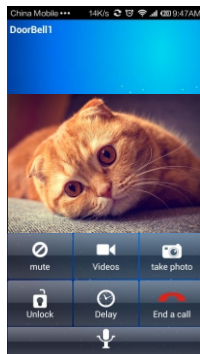
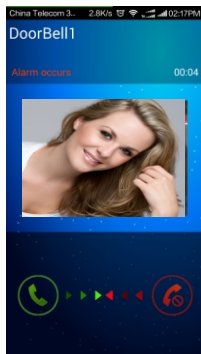


1. In main interface, directly click the door bell device (online), user can proactively monitor



2. In monitor interface, User can take video, picture, but don't support remotely unlocking

## 6.3、Real-time alerts

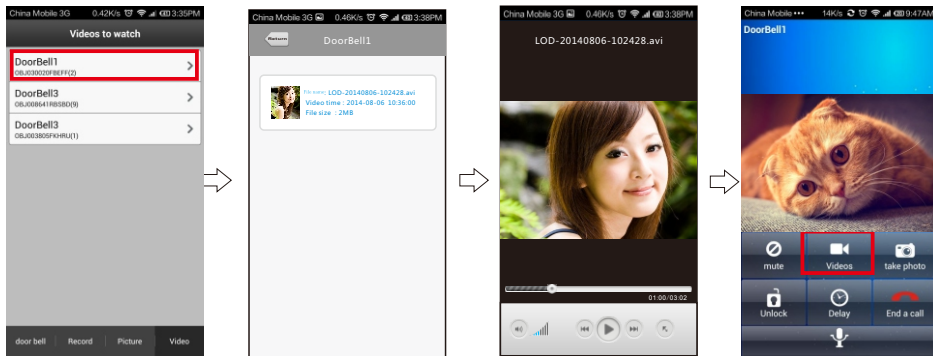


1. When alarm occurs, all registered mobile phone will receive instant notification. Slide green answer key, can connect with door bell device and real-time monitor, slide red hand up key to hand up

2. Alarm monitoring



## 6.4、Video Replay



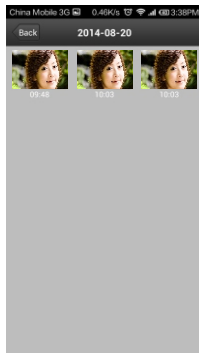
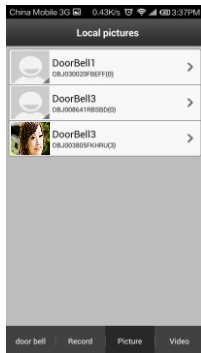
1.Navigate to video watching interface, select target device

2.Video file list, select object file.

3.Video playback, use a video player installed in mobile phone for video playback, Storm Media Player is recommended

4.In process of intercomand monitor, user can take videos

## 6.5、Local picture

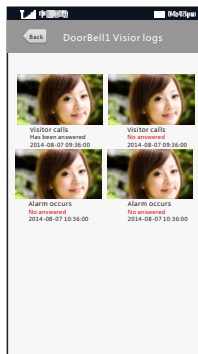
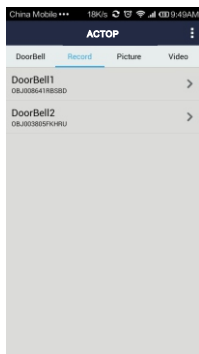


1. Select online door bell device

2. Group and sort by time

3. Click to see larger picture

## 6.6、Visitors/Alarm record

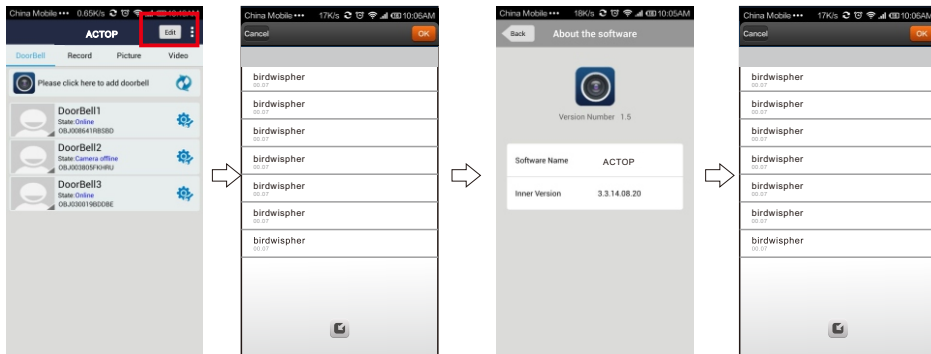


1.Navigate to record interface,select a target device , visitors call and alarm information are all saved

2.Overview

3.View the associated pictures

## 7、System setting



1.Navigate to above interface,click "Modify"button , appears tone setting ,software version etc

2.Set door bell ringtone

3.View software version

4.Set alarm ringtone

## 8、Specifications

Model	WIFI601
Camera	1/4"/F2.4/110°
Distinguishability	420 line
illumination	2 LUX
light source	6pcs Infrared light
Power	Standbay:DC 12V 1A
Power dissipation	Standby:Working:3.8W
Dimensions	120×96×34mm

## 9、Components included

- 1.Outdoor camera
- 2.Screws(standard)
- 3.User manual
- 4.Power Supply
- 5.The interface line

### **【Notes】**

- (1).Our Company is committed to reform and innovation, and reserves the right to make changes and improvements without further notice. Illustrations in this manual are for reference only.
- (2).All warranty and liability is void should you or your dealer open the unit without authorization or remove/deface the product labeling
- (3).Warranty: For one year from purchasing this product, we promise to provide you with free maintenance and technical support. This excludes damage during installation, unauthorized tampering and willful damage.
- (4).Warranty periods different from this cannot be support by the manufacturer.