

Attachment 2: Internal Photo of EUT



Photo 1: Internal View for PCB

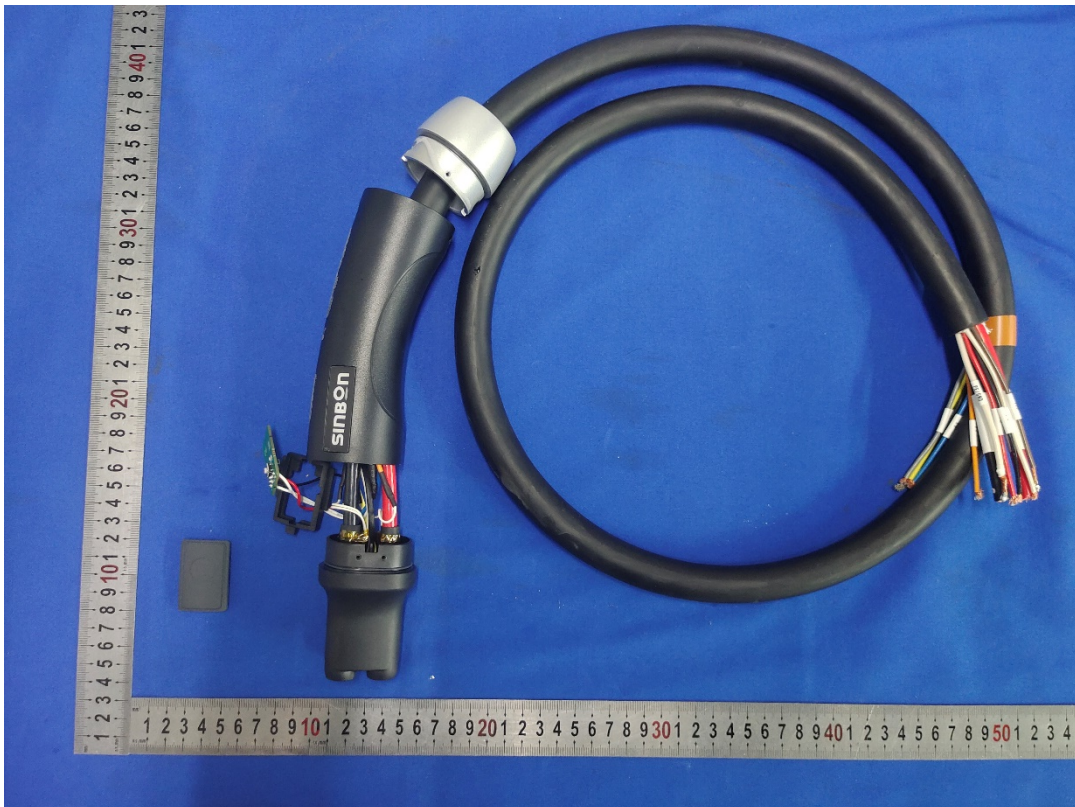


Photo 2: Internal View for PCB



Photo 3: Internal View for PCB

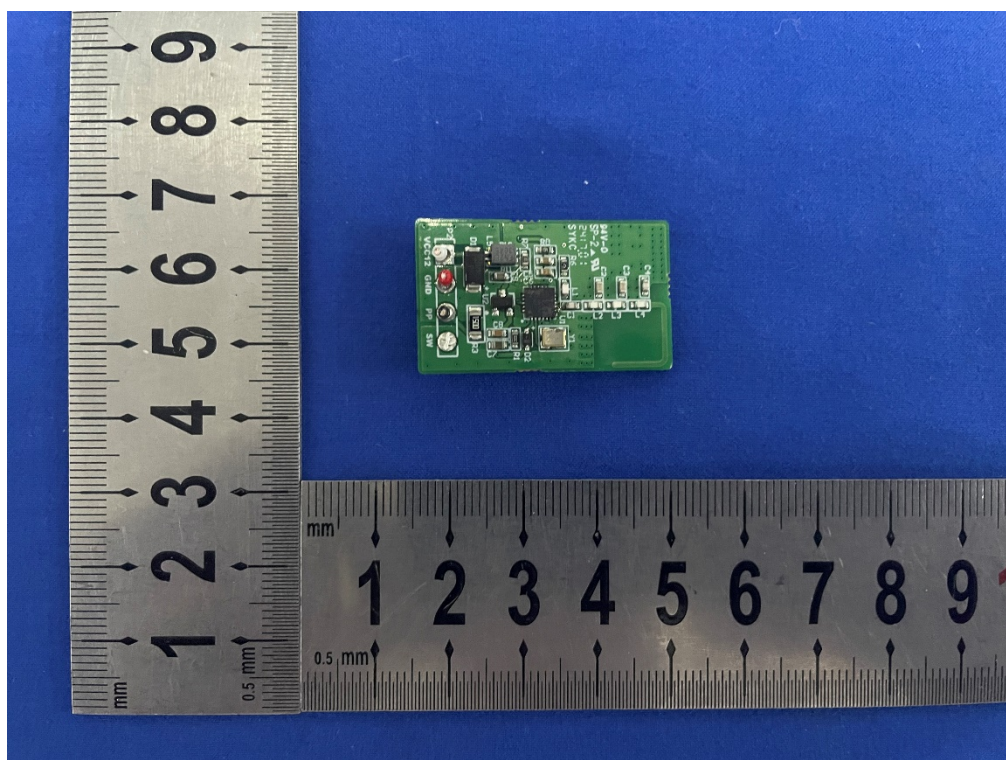


Photo 4: Internal View for PCB

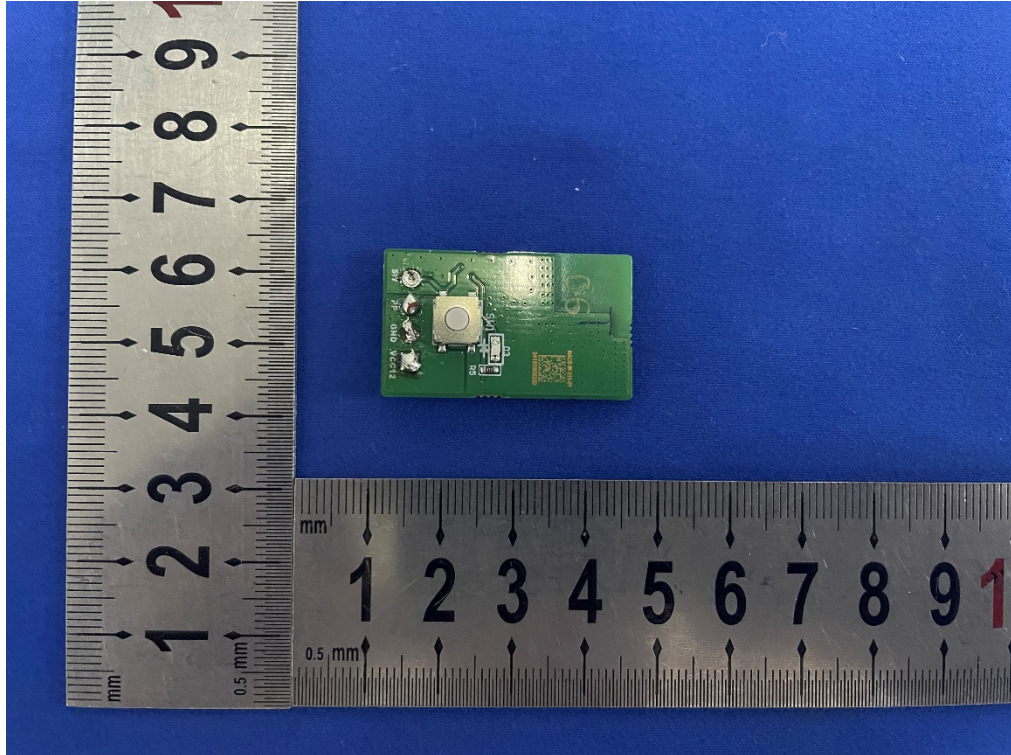


Photo 5: Internal View for PCB

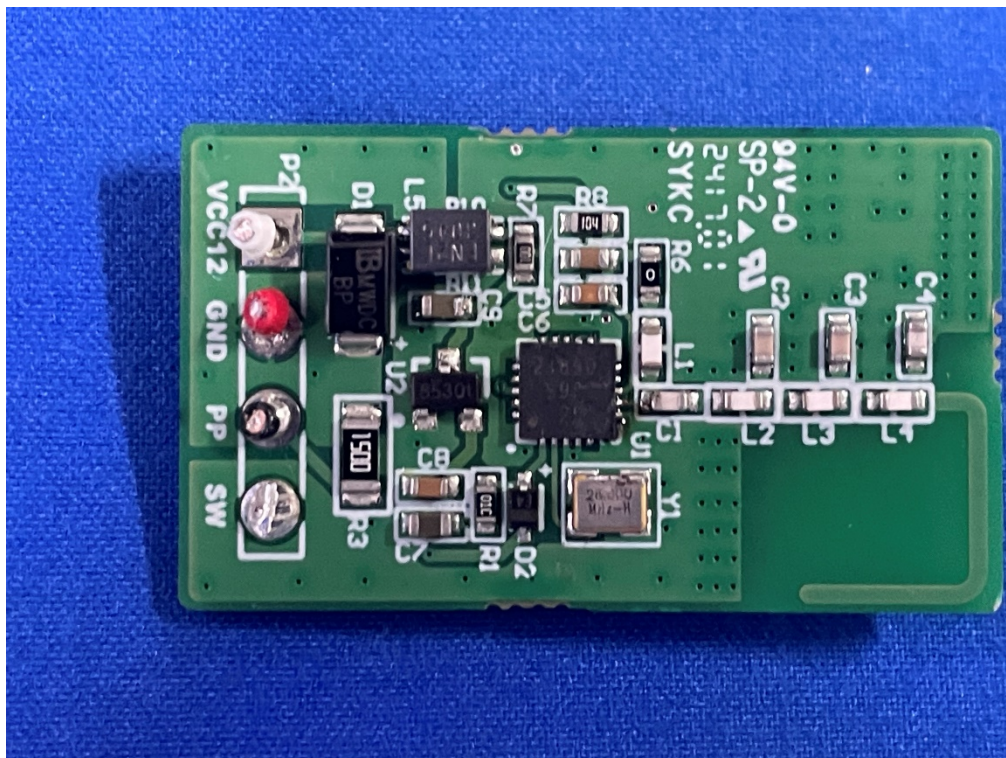


Photo 6: Internal View for PCB

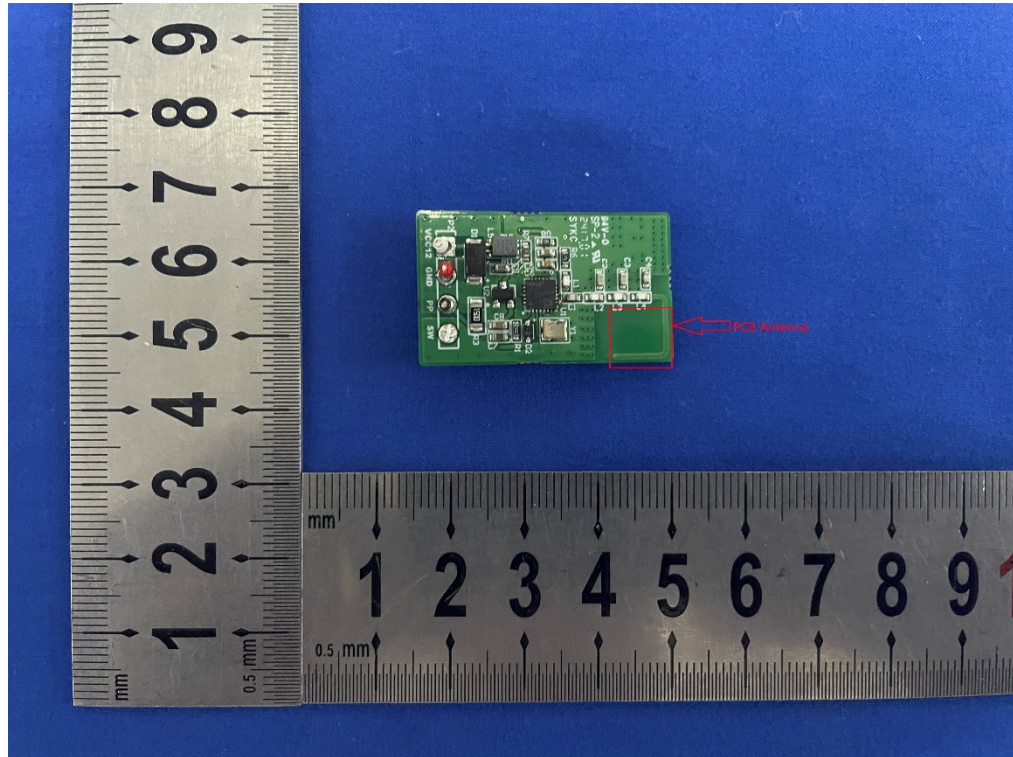


Photo 7: Internal View for 315MHz Antenna