



# WELCOME

## APOLLO

LONG RANGE HD WI-FI CAMERA

## GET STARTED

- 1 Find an installation location, attach the stand (a), attach the antenna (b), and plug in the Power Adapter (c). Do not mount your camera yet.



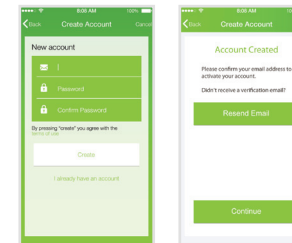
- 2 Download the Amped Wireless APOLLO Camera App for Android or iOS, on your phone or tablet.



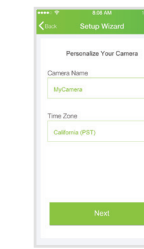
- 3 Open the App and tap **Camera Setup** to launch the Setup Wizard.



- 4 If you haven't already, you must now create an account. Once you tap **Create**, you will receive an email to verify your account. Follow the prompts in the email and then return to the App and press **Continue**.



- 5 Enter a name for your camera (i.e. Nursery). Tap **Next**.



- 6 Press and hold the gray Setup button on the back of the camera for 3 seconds. The power LED on the front will begin to blink. Tap **Next**.

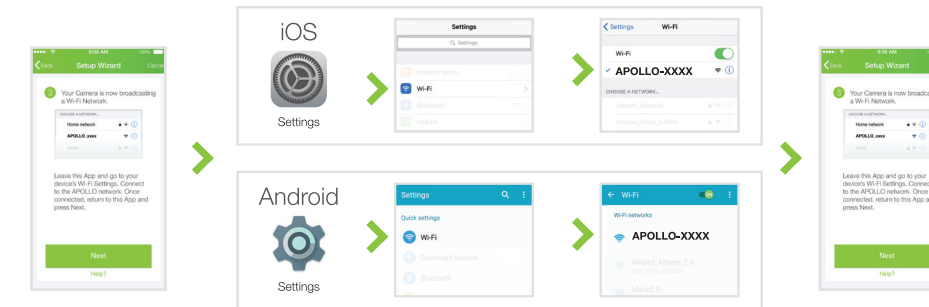
If it does not blink, hold the button down for another 3 seconds.



- 7 The camera is now broadcasting a Wi-Fi network.

Leave the APOLLO App to access your device's Wi-Fi settings and connect to the network: **APOLLO-XXXX**

Your Wi-Fi Network Name can be found on the back of the camera. Once connected, re-open the APOLLO App and tap **Next**.

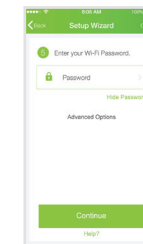


- 8 Select your Home Wi-Fi Network from the list.

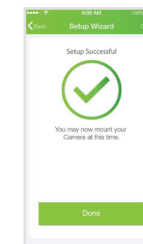
We recommend a network that has a 50% or greater signal strength and is green or yellow. If the signal is red or you do not see your network, you need to move the camera closer to your router.



- 9 If needed, enter the password for your Wi-Fi Network. Tap **Continue**.



- 10 Once you see the Setup Successful page, setup is complete. You may now mount the camera and begin recording.



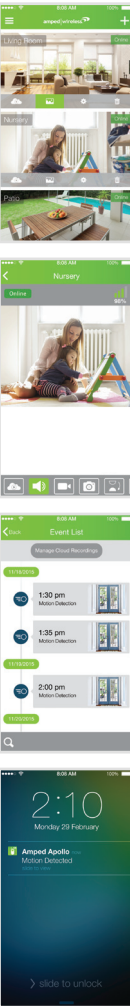
# EXPLORE THE APP

**Home Screen**  
Get a quick snapshot of every APOLLO Camera in your network, in one place. Here you can add or remove cameras and tap into each one for more actions.

**Camera View**  
Watch the live video feed and tap to hear what the camera hears, record what you see, or adjust camera settings.

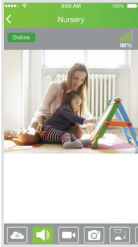
**Event Timeline**  
Scroll through a calendar of each camera's events. Recorded events like Motion Detection, Sound Detection or Full Time Recording are found here.

**Real Time Notifications**  
Receive instant or interval notifications from the camera when motion or noise is detected. Manage these alerts directly from the App.



**Viewing Features**  
Access and adjust a number of settings for each camera.

- |                                  |                             |
|----------------------------------|-----------------------------|
| View Cloud Recordings            | Horizontally flip the video |
| Listen to camera's audio         | Choose the video quality    |
| Record video to your device      | Change the lighting mode    |
| Take a snapshot of the live feed | Modify the brightness       |
| Vertically flip the video        | Adjust the contrast         |



**Camera & Notification Settings**  
Get a snapshot of your camera and APOLLO App settings.

- |                                   |                         |
|-----------------------------------|-------------------------|
| Connect to a new Wi-Fi Network    | See device information  |
| Turn Night Vision LEDs on and off | Reconnect to the camera |
| Choose your notification settings | Rename the camera       |
| Change the camera's time zone     | Remove the camera       |
| Adjust the event settings         |                         |

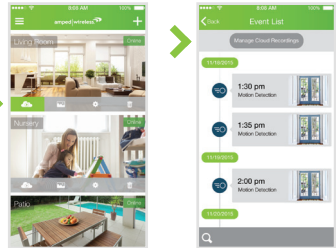


**Web Access**  
Live Camera feeds, recordings and settings are also accessible on the web.  
<http://apollo.ampedwireless.com>

# GET CLOUD RECORDING

Cloud Storage plans allow you to save, share, and revisit what your camera caught while you weren't looking. Your Cloud Recordings can be accessed on all of your devices, from wherever you are.

- Manage Cloud Recording**
1. Open the APOLLO App
  2. Tap on the Cloud Recording button
  3. Tap Manage Cloud Recording
  4. Select a plan that fits your needs



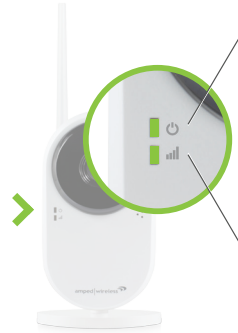
## Cloud Recording Plans

- |   |   |
|---|---|
| <b>Event-Based Recording</b> <ul style="list-style-type: none"><li>· Motion/sound triggered</li><li>· 1 plan for many cameras</li></ul> | <b>Continuous Recording</b> <ul style="list-style-type: none"><li>· Ongoing, 24/7</li><li>· 1 plan per camera</li></ul> |
|---|---|



You can also enable and manage Cloud Recording via the web.  
<http://apollo.ampedwireless.com>

# MEET THE CAMERA



**Power LED**  
Notifies you that the camera is on and recording. During the setup process, it will blink rapidly once the Setup button is activated.

- |  |                                    |
|--|------------------------------------|
|  | Connected, Camera is online        |
|  | Camera cannot connect to the cloud |

**Wi-Fi Signal Strength LED**  
Glows red, yellow, or green to inform you of the strength of the Wi-Fi signal that the camera is receiving. It assists with the camera's installation, allowing you to maximize the camera's range.

- |  |               |                              |
|--|---------------|------------------------------|
|  | 100% - 70%    | Excellent signal             |
|  | 69%-40%       | Good signal                  |
|  | Less than 40% | Poor signal, relocate camera |

# ASK FOR HELP

If you are experiencing problems with your camera setup, please contact our U.S.-based Elite Support.

1-800-573-8820 or 1-909-217-3168  
techsupport@ampedwireless.com  
<http://www.ampedwireless.com/support>

**ELITE SUPPORT**  
Free U.S.-Based Technical Support