

---

# FCC Test Report

---

Report No.: AGC055120201F2

**FCC ID** : ZRIVHF-04HHM

**PRODUCT DESIGNATION** : Wireless Microphone

**BRAND NAME** : PROAUDIO

**MODEL NAME** : VHF-04HHM

**CLIENT** : PROAUDIO ELECTRONICS CO.,LIMITED

**DATE OF ISSUE** : Feb.27, 2012

**STANDARD(S)** : FCC Part 74 Rules

**Attestation of Global Compliance Co., Ltd.**

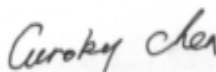
CAUTION: This report shall not be reproduced except in full without the written permission of the test laboratory and shall not be quoted out of context.


## VERIFICATION OF COMPLIANCE


|                      |   |
|----------------------|---|
| Applicant:           | PROAUDIO ELECTRONICS CO.,LIMITED  |
|                      | Office No.3 10/F Witty Commercial Building 1A-1L Tung Choi Street,Mongkok,Kowloon Hong Kong |
| Manufacturer:        | PROAUDIO ELECTRONICS CO.,LIMITED  |
|                      | Office No.3 10/F Witty Commercial Building 1A-1L Tung Choi Street,Mongkok,Kowloon Hong Kong |
| Product Description: | Wireless Microphone   |
| Brand Name:          | PROAUDIO  |
| Model Number:        | VHF-04HHM   |
| FCC ID:              | ZRIVHF-04HHM  |
| Date of Test:        | Feb.22~ Feb.27, 2012  |

### We hereby certify that:

The report for the equipment was prepared by Attestation Of Global Compliance Co., Ltd. The test data, data evaluation, test procedures, and equipment configurations shown in this report were made in accordance with the procedures given in TIA/EIA 603; ANSI C 63.4:2003 and the sample tested as described in this report is in compliance with the FCC Rules Part 74 Subpart H. The test results of this report relate only to the tested sample identified in this report.

Prepared By   
Curoky Chen Feb.27,2012

Checked By   
Forrest Lei Feb.27,2012

Authorized By   
Solger Zhang Feb.27,2012

## TABLE OF CONTENTS

|   |           |
|---|-----------|
| <b>1. GENERAL INFORMATION.....</b>                              | <b>4</b>  |
| 1.1 PRODUCT DESCRIPTION.....                                    | 4         |
| 1.2 RELATED SUBMITTAL(S) / GRANT (S).....                       | 5         |
| 1.3 TEST METHODOLOGY.....                                       | 5         |
| 1.4 TEST FACILITY.....  | 5         |
| 1.5 SPECIAL ACCESSORIE.....                                     | 5         |
| 1.6 EQUIPMENT MODIFICATIONS .....                               | 5         |
| 1.7 DIFFERENCES BETWEEN MODELS.....                             | 5         |
| <b>2. SYSTEM TEST CONFIGURATION .....</b>                       | <b>6</b>  |
| 2.1 EUT CONFIGURATION.....                                      | 6         |
| 2.2 EUT EXERCISE .....  | 6         |
| 2.3 GENERAL TECHNICAL REQUIREMENTS .....                        | 6         |
| 2.4 CONFIGURATION OF TESTED SYSTEM .....                        | 6         |
| <b>3. SUMMARY OF TEST RESULTS .....</b>                         | <b>7</b>  |
| <b>4. DESCRIPTION OF TEST MODES .....</b>                       | <b>7</b>  |
| <b>5. MAXIMUM TRANSMITTER POWER .....</b>                       | <b>8</b>  |
| 5.1 PROVISIONS APPLICABLE .....                                 | 8         |
| 5.2 MEASUREMENT PROCEDURE .....                                 | 8         |
| 5.3 TEST SETUP BLOCK DAIGRAM.....                               | 9         |
| 5.4 MEASUREMENT EQUIPMENT USED .....                            | 10        |
| 5.5 TEST RESULT .....   | 10        |
| <b>6. MODULATION CHARACTERISTICS.....</b>                       | <b>11</b> |
| 6.1 PROVISIONS APPLICABLE .....                                 | 11        |
| 6.2 MEASUREMENT METHOD.....                                     | 11        |
| 6.2.1 MODULATION LIMIT .....                                    | 11        |
| 6.2.2 AUDIO FREQUENCY RESPONSE .....                            | 11        |
| 6.3 MEASUREMENT INSTRUMENTS .....                               | 11        |
| 6.4 TEST RESULT .....   | 12        |
| <b>7. FREQUENCY TOLERANCE .....</b>                             | <b>16</b> |
| 7.1 PROVISIONS APPLICABLE .....                                 | 16        |
| 7.2 MEASUREMENT PROCEDURE .....                                 | 16        |
| 7.2.1 FREQUENCY STABILITY VERSUS ENVIRONMENTAL TEMPERATURE..... | 16        |
| 7.2.2 FREQUENCY STABILITY VERSUS INPUT VOLTAGE .....            | 16        |
| 7.3 TEST SETUP BLOCK DIAGRAM.....                               | 17        |
| 7.4 TEST EQUIPMENT USED .....                                   | 17        |
| 7.5 TEST RESULT .....   | 17        |
| <b>8. EMISSION BANDWIDTH .....</b>                              | <b>19</b> |
| 8.1 PROVISIONS APPLICABLE.....                                  | 19        |
| 8.2 MEASUREMENT PROCEDURE .....                                 | 19        |
| 8.3 TEST SETUP BLOCK DIAGRAM.....                               | 19        |
| 8.4 MEASUREMENT EQUIPMENT USED.....                             | 19        |
| 8.5 TEST RESULT .....   | 19        |
| <b>9. UNWANTED RADIATION.....</b>                               | <b>21</b> |

|  |           |
|--|-----------|
| 9.1 PROVISIONS APPLICABLE.....           | 21        |
| 9.2 MEASUREMENT PROCEDURE .....          | 21        |
| 9.3 TEST SETUP BLOCK DIAGRAM.....        | 22        |
| 9.4 MEASUREMENT EQUIPMENT USED.....      | 24        |
| 9.5 TEST RESULTS.....                    | 24        |
| <b>APPENDIX I .....</b>                  | <b>26</b> |
| <b>PHOTOGRAPHS OF TEST SETUP .....</b>   | <b>26</b> |
| <b>APPENDIX II .....</b>                 | <b>28</b> |
| <b>EXTERNAL PHOTOGRAPHS OF EUT .....</b> | <b>28</b> |
| <b>APPENDIX III .....</b>                | <b>31</b> |
| <b>EXTERNAL PHOTOGRAPHS OF EUT .....</b> | <b>31</b> |

## 1. GENERAL INFORMATION

### 1.1 PRODUCT DESCRIPTION

The EUT is a Wireless Microphone designed as Low Power Auxiliary Stations for transmitting voice only. It is designed by way of utilizing the FM modulation achieves the system operating.

A major technical description of EUT is described as following:

|                                 |  |
|---------------------------------|--|
| Communication Type              | Voice / Tone only                      |
| Modulation                      | FM                                     |
| Emission Type                   | 122KF3E                                |
| Emission Bandwidth              | 67.416kHz                              |
| Peak Frequency Deviation        | 48.74KHz                               |
| Frequency Response              | 12 KHz                                 |
| Maximum Output Power            | 7.21 mW                                |
| Output Power Modification       | Fixed                                  |
| Antenna Designation             | Integral                               |
| Power Supply                    | DC 9V                                  |
| Battery Endpoint                | DC 5.25V                               |
| Operation Frequency and Channel | Frequency: 179 MHz<br>Channel:1Channel |
| Frequency Tolerance             | 0.00096%                               |

## **1.2 RELATED SUBMITTAL(S) / GRANT (S)**

This submittal(s) (test report) is intended for FCC ID: ZRIVHF-04HHM filing to comply with the FCC Part 74, Subpart H Rules.

## **1.3 TEST METHODOLOGY**

The radiated emission testing was performed according to the procedures of ANSI TIA/EIA 603 and FCC CFR 47 2.1046, 2.1047, 2.1049, 2.1051, 2.1053, 2.1055 and 2.1057

## **1.4 TEST FACILITY**

. Attestation of Global Compliance Co., Ltd.

1F., No.2 Building, Huafeng No.1 Technical Industrial Park, Sanwei, Xixiang, Baoan District, Shenzhen

The test site is constructed and calibrated to meet the FCC requirements in documents ANSI C63.4: 2003.

FCC register No.: 259865

## **1.5 SPECIAL ACCESSORIE**

Not available for this EUT intended for grant.

## **1.6 EQUIPMENT MODIFICATIONS**

Not available for this EUT intended for grant.

## **1.7 DIFFERENCES BETWEEN MODELS**

Not available for this EUT intended for grant.

## 2. SYSTEM TEST CONFIGURATION

### 2.1 EUT Configuration

The EUT configuration for testing is installed on RF field strength measurement to meet the Commission's requirement and operating in a manner which intends to maximize its emission characteristics in a continuous normal application.

### 2.2 EUT EXERCISE

The Transmitter was operated in the normal operating mode. The TX frequency was fixed which was for the purpose of the measurements.

### 2.3 GENERAL TECHNICAL REQUIREMENTS

- a) Section 74.861 (e) - 1: Maximum transmitter power less than 50mW
- b) Section 74.861 (e) - 3: Peak Frequency Deviation less than  $\pm 75$  KHz
- c) Section 74.861 (e) - 4: Frequency Tolerance less than 0.005%
- d) Section 74.861 (e) - 5: Emission Bandwidth shall less than 200 KHz
- e). Section 74.861 (e) - 6: Unwanted radiation

According to Section 74.861 (e) – 6, the mean power of emission shall be attenuated below the mean output power of the transmitter in accordance with the following schedule:

- 1). At least 25 dB on any frequency removed from the center of the authorized bandwidth by more than 50% up to and including 100% of the authorized bandwidth.
- 2). At least 35 dB on any frequency removed from the center of the authorized bandwidth by more than 100% up to and including 250% of the authorized bandwidth.
- 4). At least  $43 + 10 \log_{10}(T)$  dB on any frequency removed from the center of the authorized bandwidth by more than 250%

### 2.4 CONFIGURATION OF TESTED SYSTEM

Fig. 2-1 Configuration of Tested System



Table 2-1 Equipment Used in Tested System

| Item | Equipment           | Mfr/Brand | Model/Type No. | FCC ID       | Series No. | Note |
|------|---------------------|-----------|----------------|--------------|------------|------|
| 1.   | Wireless Microphone | N/A       | VHF-04HHM      | ZRIVHF-04HHM | N/A        | EUT  |
| --   | --                  | --        | --             | --           | --         | --   |
| --   | --                  | --        | --             | --           | --         | --   |

### 3. SUMMARY OF TEST RESULTS

| FCC Rules     | Description Of Test | Result    |
|---------------|---------------------|-----------|
| §74.861 (e)-1 | Carrier Power       | Compliant |
| §74.861 (e)-3 | Frequency Deviation | Compliant |
| §74.861 (e)-4 | Frequency Tolerance | Compliant |
| §74.861 (e)-5 | Operating Bandwidth | Compliant |
| §74.861 (e)-6 | Unwanted Radiation  | Compliant |

### 4. DESCRIPTION OF TEST MODES

The EUT (Wireless Microphone) has been tested under normal operating condition. Three axes have been evaluated for radiated emission.



## **5. MAXIMUM TRANSMITTER POWER**

### **5.1 PROVISIONS APPLICABLE**

According to FCC Part 74 Section 74.861(e) – 1: The power of the measured unmodulated carrier power at the output of the transmitter power amplifier may not exceed 50mW

### **5.2 MEASUREMENT PROCEDURE**

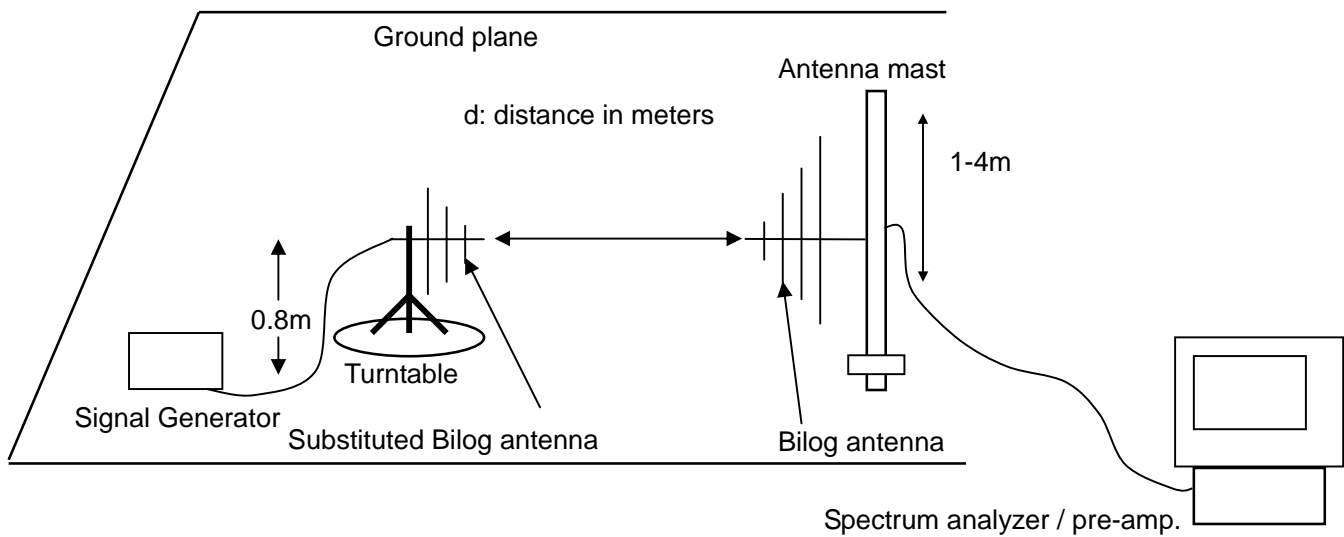
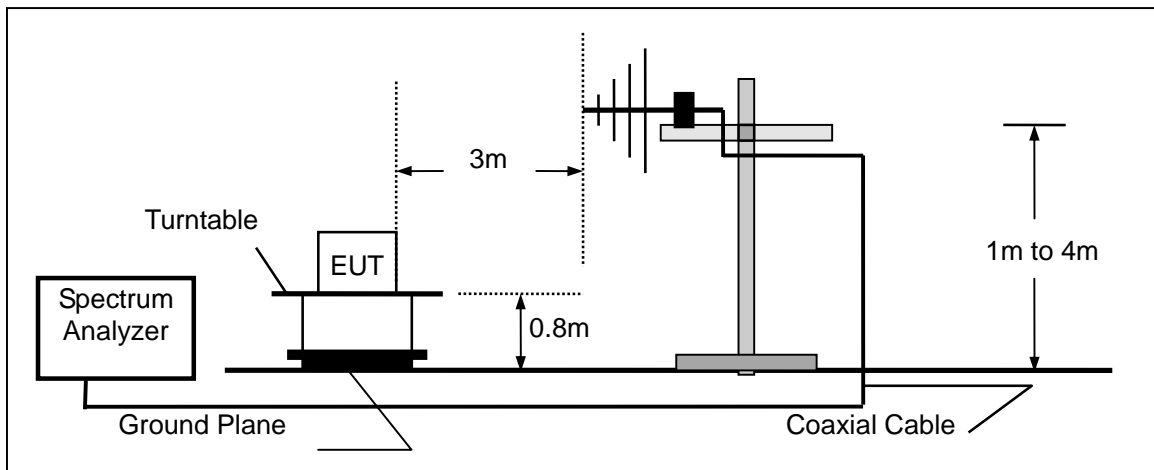
- 1). On a test site, the EUT shall be placed on a turntable, and in the position closest to the normal use as declared by the user.
- 2). The test antenna shall be oriented initially for vertical polarization located 3m from the EUT to correspond to the transmitter.
- 3). The output of the antenna shall be connected to the measuring receiver and either a peak or quasi-peak detector was used for the measurement as indicated on the report. The detector selection is based on how close the emission level was approaching the limit.
- 4). The transmitter shall be switched on; if possible, without the modulation and the measurement receiver shall be tuned to the frequency of the transmitter under test.
- 5). The test antenna shall be raised and lowered through the specified range of height until the measuring receiver detects a maximum signal level.
- 6). The transmitter shall then be rotated through 360° in the horizontal plane, until the maximum signal level is detected by the measuring receiver.
- 7). The test antenna shall be raised and lowered again through the specified range of height until the measuring receiver detects a maximum signal level.
- 8). The maximum signal level detected by the measuring receiver shall be noted.
- 9). Replace the antenna with a proper Antenna (substitution antenna).
- 10). The substitution antenna shall be oriented for vertical polarization and, if necessary, the length of the substitution antenna shall be adjusted to correspond to the frequency of transmitting.
- 11). The substitution antenna shall be connected to a calibrated signal generator.
- 12). If necessary, the input attenuator setting of the measuring receiver shall be adjusted in order to increase the sensitivity of the measuring receiver.
- 13). The test antenna shall be raised and lowered through the specified range of the height to ensure that the maximum signal is received.
- 14). The input signal to substitution antenna shall be adjusted to the level that produces a level detected by the measuring receiver, that is equal to the level noted while the transmitter radiated power was measured, corrected for the change of input attenuation setting of the measuring receiver.
- 15). The input level to the substitution antenna shall be recorded as power level in dBm, corrected for any change of input attenuator setting of the measuring receiver.
- 16). The measurement shall be repeated with the test antenna and the substitution antenna oriented

for horizontal polarization.

- 17). The measure of the effective radiated power is the larger of the two levels recorded, at the input to the substitution antenna, corrected for the gain of the substitution antenna if necessary.

### 5.3 TEST SETUP BLOCK DAIGRAM

#### TEST SETUP OF SUBSTITUTION METHOD



#### 5.4 MEASUREMENT EQUIPMENT USED

| EQUIPMENT TYPE    | MFR            | MODEL NO. | SERIAL NO. | CAL DATE. | NEXT CAL DAT. |
|-------------------|----------------|-----------|------------|-----------|---------------|
| EMI Test Receiver | R&S            | ESCS30    | 100307     | 2011.6.27 | 2012.6.26     |
| Pre-Amplifier     | HP             | 8447D     | 2944A07999 | 2011.6.27 | 2012.6.26     |
| Antenna           | A.H.           | SAS-521-4 | 128        | 2011.6.27 | 2012.6.26     |
| CABLE             | TIME MICROWAVE | LMR-400   | N-TYPE04   | 2011.6.27 | 2012.6.26     |

#### 5.5 TEST RESULT

##### Test Result @179 MHz

| Freq.<br>(MHz) | Antenna<br>Polarity | Reading<br>(dBm) | SG O/P<br>(dBm) | Ant. Gain<br>(dB) | Dipole<br>Gain<br>(dBi) | Cable<br>(dB) | Corrected Power |      | Limit<br>(mW) |
|----------------|---------------------|------------------|-----------------|-------------------|-------------------------|---------------|-----------------|------|---------------|
|                |                     |                  |                 |                   |                         |               | (dBm)           | (mW) |               |
| 179.000        | V                   | -8.37            | -5.22           | 15.21             | 0                       | 1.41          | 8.58            | 7.21 | 50            |
| 179.000        | H                   | -7.34            | -5.3            | 14.87             | 0                       | 1.32          | 8.25            | 6.68 | 50            |

## 6. MODULATION CHARACTERISTICS

### 6.1 PROVISIONS APPLICABLE

- According to CFR 47 section 2.1047(a), for Voice Modulation Communication Equipment, the frequency response of the audio modulation circuit over a range of 100 to 5000Hz shall be measured.
- According to CFR 47 section 74.861(e)-3, any form of modulation may be used. A maximum deviation of  $\pm 75$  KHz is permitted when frequency modulation is employed.

### 6.2 MEASUREMENT METHOD

#### 6.2.1 MODULATION LIMIT

- Configure the EUT as shown in figure 6-1, adjust the audio input for 60% of rated system deviation at 1KHz using this level as a reference (0dB) and vary the input level from  $-20$  to  $+20$ dB. Record the frequency deviation obtained as a function of the input level.
- Repeat step 1 with input frequency changing to 300, 1000, 3000, and 12000 Hz in sequence.

#### 6.2.2 AUDIO FREQUENCY RESPONSE

- Configure the EUT as shown in figure 6-1.
- Adjust the audio input for 20% of rated system deviation at 1 KHz using this level as a reference (0 dB).
- Vary the Audio frequency from 100 Hz to 30 KHz and record the frequency deviation.
- Audio Frequency Response =  $20\log_{10}$  (Deviation of test frequency/Deviation of 1 KHz reference).

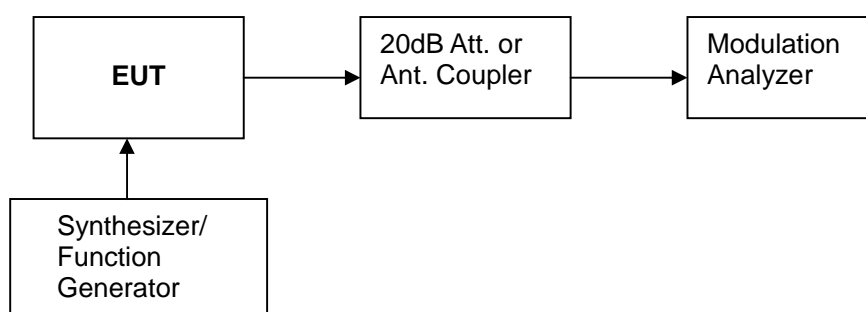


Figure 6-1: Modulation Characteristic Measurement Configuration

### 6.3 MEASUREMENT INSTRUMENTS

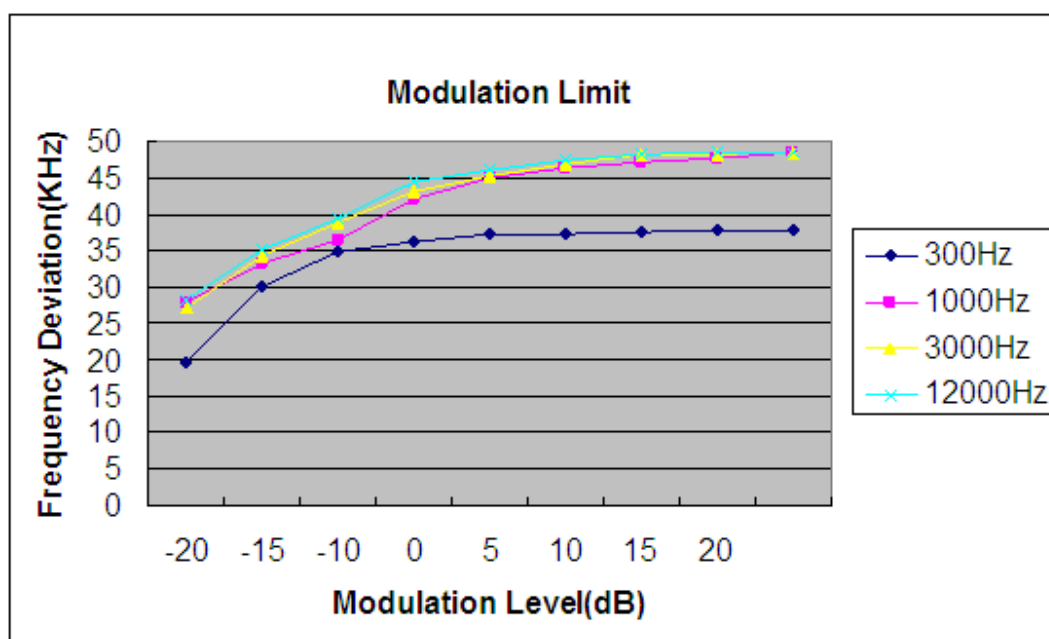
| EQUIPMENT TYPE         | MFR           | MODEL NUMBER | CAL DATE. | NEXT CAL DAT. |
|------------------------|---------------|--------------|-----------|---------------|
| Audio Signal Generator | HP            | 3325A        | 2011.6.27 | 2012.6.26     |
| Modulation Analyzer    | HP            | 8920B        | 2011.6.27 | 2012.6.26     |
| Attenuator             | MINI CIRCUITS | MCL BW-S20W2 | 2011.6.27 | 2012.6.26     |

## 6.4 TEST RESULT

### a). Modulation Limit:

#### Test Result @ 179 MHz

| Modulation Level (dB) | Peak Freq. Deviation At 300 Hz (KHz) | Peak Freq. Deviation At 1000 Hz (KHz) | Peak Freq. Deviation At 3000 Hz (KHz) | Peak Freq. Deviation At 12000 Hz (KHz) |
|-----------------------|--------------------------------------|---------------------------------------|---------------------------------------|--|
| -20                   | 19.53                                | 28.81                                 | 27.33                                 | 28.41                                  |
| -15                   | 30.27                                | 33.02                                 | 34.51                                 | 33.67                                  |
| -10                   | 35.27                                | 36.31                                 | 38.89                                 | 37.18                                  |
| -5                    | 36.15                                | 41.41                                 | 43.27                                 | 45.31                                  |
| 0                     | 36.25                                | 45.16                                 | 45.56                                 | 46.44                                  |
| +5                    | 37.34                                | 45.18                                 | 46.61                                 | 47.34                                  |
| +10                   | 37.48                                | 47.42                                 | 48.27                                 | 48.46                                  |
| +15                   | 37.69                                | 48.16                                 | 48.33                                 | 48.51                                  |
| +20                   | 37.91                                | 48.54                                 | 48.59                                 | 48.74                                  |



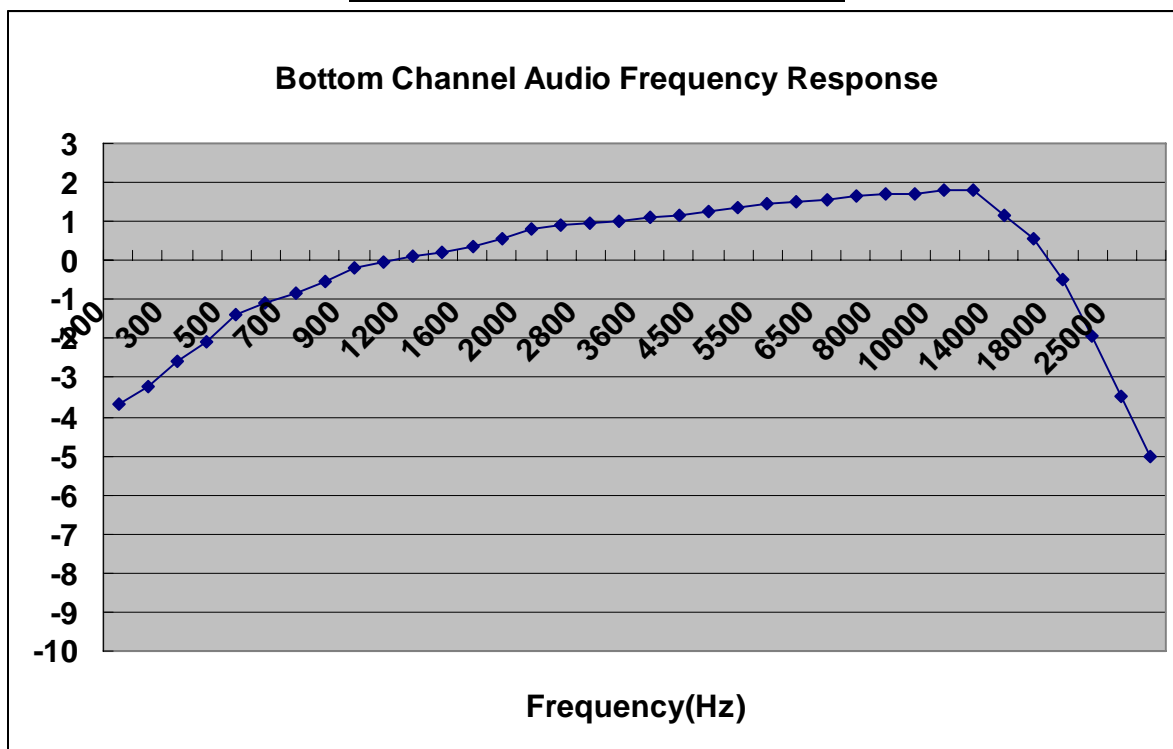


b). Audio Frequency Response:

**Test Result @ 179 MHz**

| Frequency (Hz) | Deviation (KHz) |
|----------------|-----------------|
| 100            | 10.33           |
| 200            | 10.51           |
| 300            | 11.24           |
| 400            | 11.81           |
| 500            | 12.83           |
| 600            | 12.29           |
| 700            | 13.44           |
| 800            | 14.20           |
| 900            | 14.74           |
| 1000           | 15.14           |
| 1200           | 15.48           |
| 1400           | 15.52           |
| 1600           | 15.74           |
| 1800           | 16.26           |
| 2000           | 16.59           |
| 2400           | 16.64           |
| 2800           | 16.81           |
| 3200           | 16.48           |
| 3600           | 17.22           |
| 4000           | 17.15           |
| 4500           | 17.37           |
| 5000           | 17.85           |
| 5500           | 17.89           |
| 6000           | 17.84           |
| 6500           | 18.11           |
| 7000           | 18.26           |
| 8000           | 18.33           |
| 9000           | 18.41           |
| 10000          | 18.49           |
| 12000          | 18.53           |
| 14000          | 17.21           |
| 16000          | 16.44           |
| 18000          | 14.23           |
| 20000          | 12.22           |
| 25000          | 10.05           |
| 30000          | 9.13            |

**Audio Frequency Response @179MHz**





## **7. FREQUENCY TOLERANCE**

### **7.1 PROVISIONS APPLICABLE**

- a). According to FCC Part 2 Section 2.1055(a)(1), the frequency stability shall be measured with variation of ambient temperature from  $-30^{\circ}\text{C}$  to  $+50^{\circ}\text{C}$  centigrade.
- b). According to FCC Part 2 Section 2.1055(d)(2), for hand carried battery powered equipment, the frequency stability shall be measured with reducing primary supply voltage to the battery operating end point, which is specified by the manufacture.
- c). According to FCC Part 74 Section 74.861(e)-4, the frequency tolerance must be maintained within 0.005%.

### **7.2 MEASUREMENT PROCEDURE**

#### **7.2.1 FREQUENCY STABILITY VERSUS ENVIRONMENTAL TEMPERATURE**

- 1) Setup the configuration per figure 7-1 for frequencies measurement inside an environment chamber, install new battery in the EUT.
- 2) Turn on EUT and set SA center frequency to the EUT radiated frequency. Set SA Resolution Bandwidth to 1KHz and Video Resolution Bandwidth to 1KHz and Frequency Span to 50KHz. Record this frequency as reference frequency.
- 3) Set the temperature of chamber to  $50^{\circ}\text{C}$ . Allow sufficient time (approximately 30 min) for the temperature of the chamber to stabilize. While maintaining a constant temperature inside the chamber, turn the EUT on and measure the EUT operating frequency.
- 4) Repeat step 2 with a  $10^{\circ}\text{C}$  decreased per stage until the lowest temperature  $-30^{\circ}\text{C}$  is measured, record all measured frequencies on each temperature step.

#### **7.2.2 FREQUENCY STABILITY VERSUS INPUT VOLTAGE**

- 1) Setup the configuration per figure 7-1 for frequencies measured at temperature if it is within  $15^{\circ}\text{C}$  to  $25^{\circ}\text{C}$ . Otherwise, an environment chamber set for a temperature of  $20^{\circ}\text{C}$  shall be used. Install new battery in the EUT.
- 2) Set SA center frequency to the EUT radiated frequency. Set SA Resolution Bandwidth to 1 KHz and Video Resolution Bandwidth to 1KHz. Record this frequency as reference frequency.
- 3) For battery operated only device, supply the EUT primary voltage at the operating end point which is specified by manufacturer and record the frequency.

### 7.3 TEST SETUP BLOCK DIAGRAM

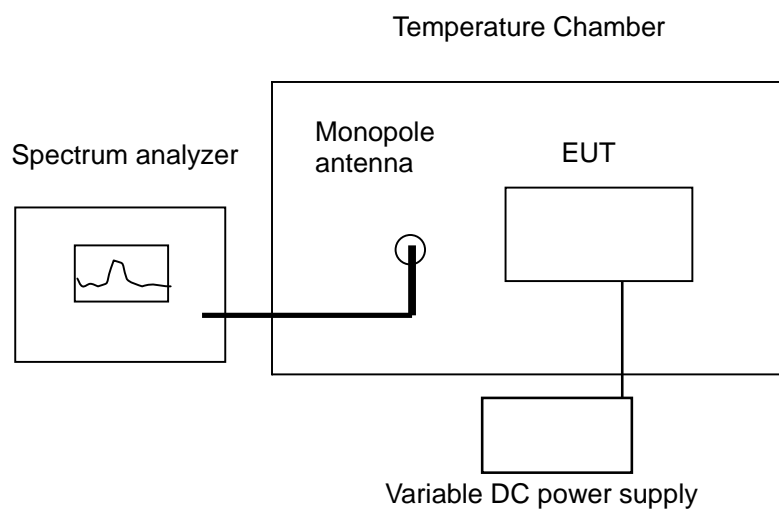


Figure 7-1

### 7.4 TEST EQUIPMENT USED

| EQUIPMENT TYPE      | MFR     | MODEL NO. | SERIAL NO. | CAL DATE. | NEXT CAL DAT. |
|---------------------|---------|-----------|------------|-----------|---------------|
| EMI Test Receiver   | R&S     | ESCS30    | 100307     | 2011.6.27 | 2012.6.26     |
| Temperature Chamber | SHIHIN  | BM50-CB   | 908        | 2011.6.27 | 2012.6.26     |
| DC Power Supply     | LONGWEI | WYK-605   | N/A        | 2011.6.27 | 2012.6.26     |

### 7.5 TEST RESULT

a) Frequency stability versus input voltage (battery operation end point voltage is 5.25 V)

| Wireless Microphone | Reference Frequency (MHz) | Frequency Measured at End Point Voltage | Frequency Error (%) | Limit (%) |
|---------------------|---------------------------|---|---------------------|-----------|
| Normal Frequency    | 179                       | 179.001596                              | 0.00089             | 0.005     |

b) Frequency stability versus ambient temperature

**Test Result @ Top Channel**

| Reference Frequency: 179MHz  |              |   | Limit: $\pm 0.005\%$ |  |
|------------------------------|--------------|---|----------------------|--|
| Environment Temperature (°C) | Power Supply | Frequency deviation measured with time Elapsed (30 minutes) |                      |  |
|                              |              | (MHz)   | %                    |  |
| 50                           | DC 9V        | 179.001314  | 0.00073              |  |
| 40                           | DC 9V        | 179.001723  | 0.00096              |  |
| 30                           | DC 9V        | 179.001641  | 0.00091              |  |
| 20                           | DC 9V        | 178.998403  | -0.00089             |  |
| 10                           | DC 9V        | 179.001525  | 0.00085              |  |
| 0                            | DC 9V        | 179.001124  | 0.00062              |  |
| -10                          | DC 9V        | 179.001315  | 0.00073              |  |
| -20                          | DC 9V        | 179.001245  | 0.00069              |  |
| -30                          | DC 9V        | 179.001241  | 0.00069              |  |

## 8. EMISSION BANDWIDTH

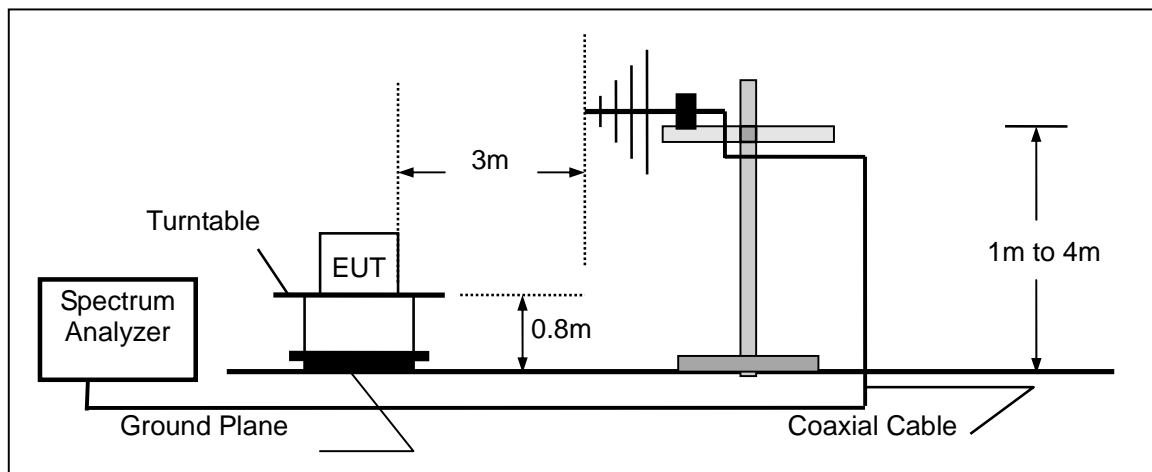
### 8.1 PROVISIONS APPLICABLE

According to FCC Part 74 Section 74.861(e)-5: The operation bandwidth shall not exceed 200 KHz

### 8.2 MEASUREMENT PROCEDURE

- 1). The EUT was placed on a turn table which is 0.8m above ground plane.
- 2). Set EUT as normal operation
- 3). Set SPA Center Frequency = fundamental frequency, RBW=1 KHz, VBW=1 KHz, Span =600 KHz.
- 4). Set SPA Max hold. Mark peak, -26dB.

### 8.3 TEST SETUP BLOCK DIAGRAM



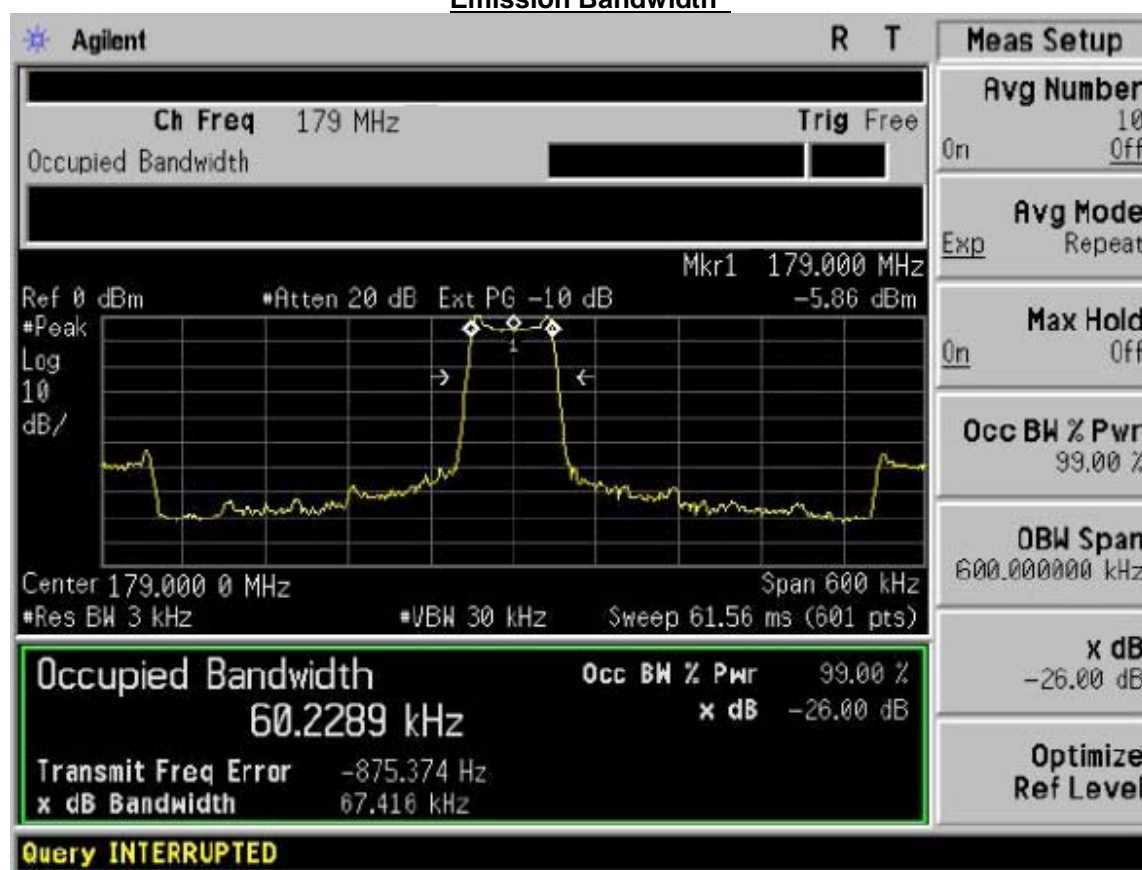
### 8.4 MEASUREMENT EQUIPMENT USED

| EQUIPMENT TYPE    | MFR  | MODEL NO. | SERIAL NO. | CAL DATE. | NEXT CAL DAT. |
|-------------------|------|-----------|------------|-----------|---------------|
| EMI Test Receiver | R&S  | ESCS30    | 100307     | 2011.6.27 | 2012.6.26     |
| Pre-Amplifier     | HP   | 8447D     | 2944A07999 | 2011.6.27 | 2012.6.26     |
| Antenna           | A.H. | SAS-521-4 | 128        | 2011.6.27 | 2012.6.26     |

### 8.5 TEST RESULT

| 26 dB Test Result |            |          |        |
|-------------------|------------|----------|--------|
| Operation Channel | Test Data  | Limit    | Result |
| Normal Channel    | 67.416 KHz | ≤200 KHz | Pass   |

### Emission Bandwidth



## **9. UNWANTED RADIATION**

### **9.1 PROVISIONS APPLICABLE**

According to Section 74.861(e)-6, the mean power of emissions shall be attenuated below the mean output power of the transmitter in accordance with the following schedule:

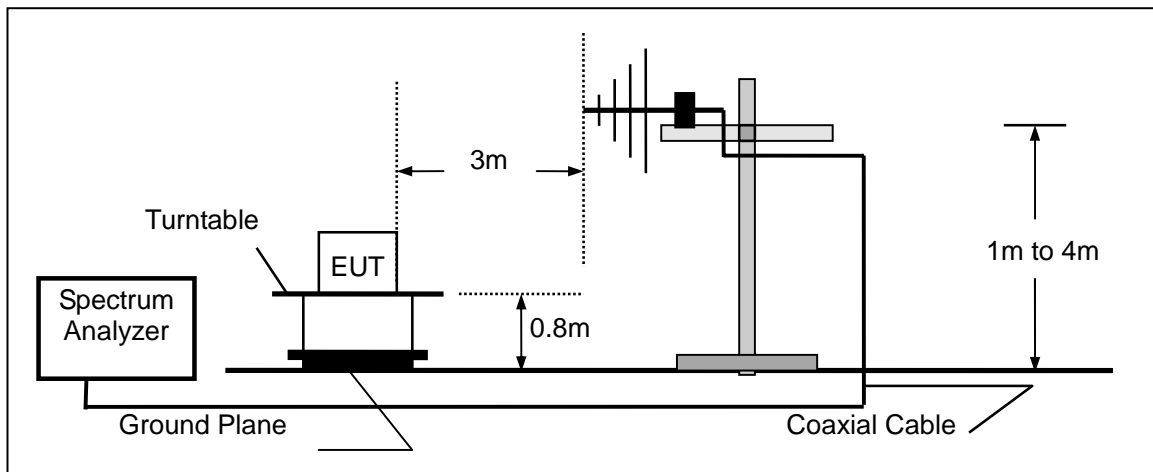
- 1). On any frequency removed from the operating frequency by more than 50 percent up to and including 100 percent of the authorized bandwidth: at least 25 dB;
- 2). On any frequency removed from the operating frequency by more than 100 percent up to and including 250 percent of the authorized bandwidth: at least 35 dB;
- 3). On any frequency removed from the operating frequency by more than 250 percent of the authorized bandwidth: at least  $43 + 10 \log_{10} (TP)$  dB

### **9.2 MEASUREMENT PROCEDURE**

- 1). On a test site, the EUT shall be placed on a turntable, and in the position closest to the normal use as declared by the user.
- 2). The test antenna shall be oriented initially for vertical polarization located 3m from the EUT to correspond to the transmitter.
- 3). The output of the antenna shall be connected to the measuring receiver and either a peak or quasi-peak detector was used for the measurement as indicated on the report. The detector selection is based on how close the emission level was approaching the limit.
- 4). The transmitter shall be switched on; if possible, without the modulation and the measurement receiver shall be tuned to the frequency of the transmitter under test.
- 5). The test antenna shall be raised and lowered through the specified range of height until the measuring receiver detects a maximum signal level.
- 6). The transmitter shall then be rotated through 360° in the horizontal plane, until the maximum signal level is detected by the measuring receiver.
- 7). The test antenna shall be raised and lowered again through the specified range of height until the measuring receiver detects a maximum signal level.
- 8). The maximum signal level detected by the measuring receiver shall be noted.
- 9). The measurement shall be repeated with the test antenna set to horizontal polarization.
- 10). Replace the antenna with a proper Antenna (substitution antenna).
- 11). The substitution antenna shall be oriented for vertical polarization and, if necessary, the length of the substitution antenna shall be adjusted to correspond to the frequency of transmitting.
- 12). The substitution antenna shall be connected to a calibrated signal generator.
- 13). If necessary, the input attenuator setting of the measuring receiver shall be adjusted in order to increase the sensitivity of the measuring receiver.
- 14). The test antenna shall be raised and lowered through the specified range of the height to ensure that the maximum signal is received.

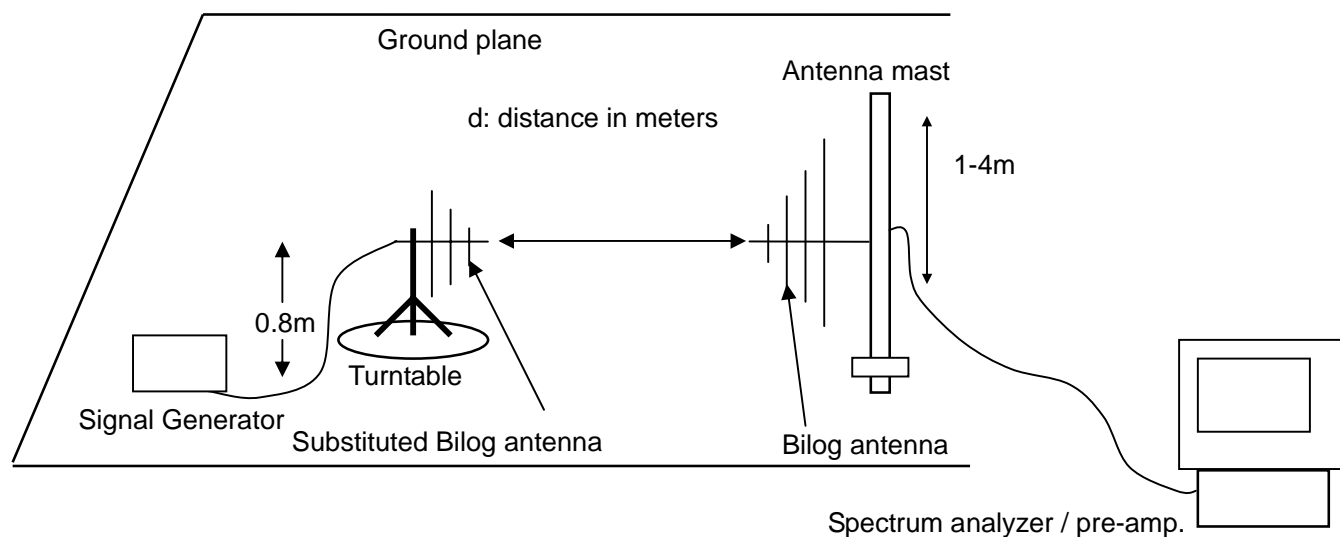
- 15). The input signal to substitution antenna shall be adjusted to the level that produces a level detected by the measuring receiver, that is equal to the level noted while the transmitter radiated power was measured, corrected for the change of input attenuation setting of the measuring receiver.
- 16). The input level to the substitution antenna shall be recorded as power level in dBm, corrected for any change of input attenuator setting of the measuring receiver.
- 17). The measurement shall be repeated with the test antenna and the substitution antenna oriented for horizontal polarization.

### 9.3 TEST SETUP BLOCK DIAGRAM

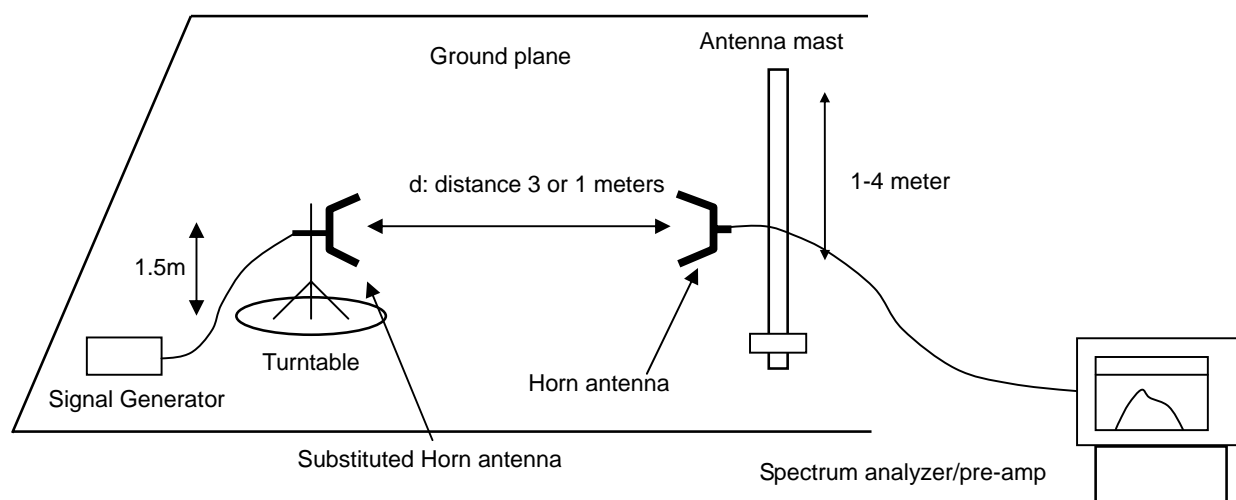


# **Substitution Method:**

## **Radiation below 1GHz**



## **Radiation above 1GHz**





#### 9.4 MEASUREMENT EQUIPMENT USED

| EQUIPMENT TYPE    | MFR  | MODEL NO. | SERIAL NO. | CAL DATE. | NEXT CAL DAT. |
|-------------------|------|-----------|------------|-----------|---------------|
| EMI Test Receiver | R&S  | ESCS30    | 100307     | 2011.6.27 | 2012.6.26     |
| Pre-Amplifier     | HP   | 8447D     | 2944A07999 | 2011.6.27 | 2012.6.26     |
| Antenna           | A.H. | SAS-521-4 | 128        | 2011.6.27 | 2012.6.26     |

#### 9.5 TEST RESULTS

Calculation: Limit (dBm) = EL - 43 - 10log10 (TP)

Notes: EL is the emission level of the Output Power expressed in dBm, in this application, the EL is 1.72 dBm.

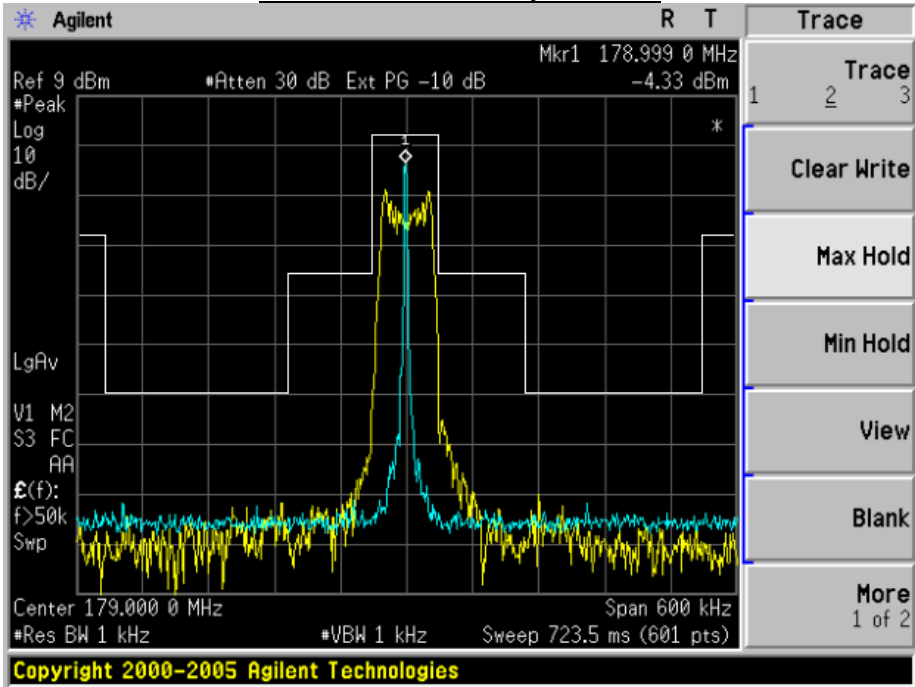
Limit (dBm) = 1.72 - 43 - 10log 10 (0.00149) = -13

##### Top Channel

| Frequency (MHz) | Reading Level (dBm) | Antenna Polarization | S.G. (dBm) (dBm) | Cabel Loss (dB) | Ant.Gain (dB) | Emission Level (dBm) | Limit (dBm) | Margin (dB) |
|-----------------|---------------------|----------------------|------------------|-----------------|---------------|----------------------|-------------|-------------|
| 348.4           | -65.93              | H                    | -45.35           | 1.47            | 13.37         | -33.45               | -13         | -20.45      |
| 348.4           | -62.54              | V                    | -40.31           | 1.47            | 13.37         | -28.41               | -13         | -15.41      |
| 390.0           | -64.46              | H                    | -43.34           | 1.52            | 13.42         | -31.44               | -13         | -18.44      |
| 390.0           | -61.17              | V                    | -41.35           | 1.52            | 13.42         | -29.45               | -13         | -16.45      |
| 431.6           | -65.55              | H                    | -42.25           | 1.58            | 13.67         | -30.16               | -13         | -17.16      |
| 431.6           | -61.39              | V                    | -41.80           | 1.58            | 13.67         | -29.71               | -13         | -16.71      |
| 522.6           | -80.34              | H                    | -62.24           | 1.61            | 13.83         | -50.02               | -13         | -37.02      |
| 522.6           | -75.37              | V                    | -60.36           | 1.61            | 13.83         | -48.14               | -13         | -35.14      |
| 585.0           | -81.26              | H                    | -63.54           | 1.64            | 13.87         | -51.31               | -13         | -38.31      |
| 585.0           | -79.14              | V                    | -61.27           | 1.64            | 13.87         | -49.04               | -13         | -36.04      |
| 647.4           | -82.43              | H                    | -63.45           | 1.69            | 13.95         | -51.19               | -13         | -38.19      |
| 647.4           | -80.33              | V                    | -61.05           | 1.69            | 13.95         | -48.79               | -13         | -35.79      |
| --              | --                  | --                   | --               | --              | --            | --                   | --          | --          |
| --              | --                  | --                   | --               | --              | --            | --                   | --          | --          |

Notes: -- means the output power of all the spurious frequency is at least 20dB down to the limit.

Emission Mask @ Top Channel



## **APPENDIX I**

### **PHOTOGRAPHS OF TEST SETUP**

### RADIATED EMISSION TEST SETUP



## **APPENDIX II**

### **EXTERNAL PHOTOGRAPHS OF EUT**

FRONT VIEW OF EUT



BACK VIEW OF EUT



LEFT VIEW OF EUT



## **APPENDIX III**

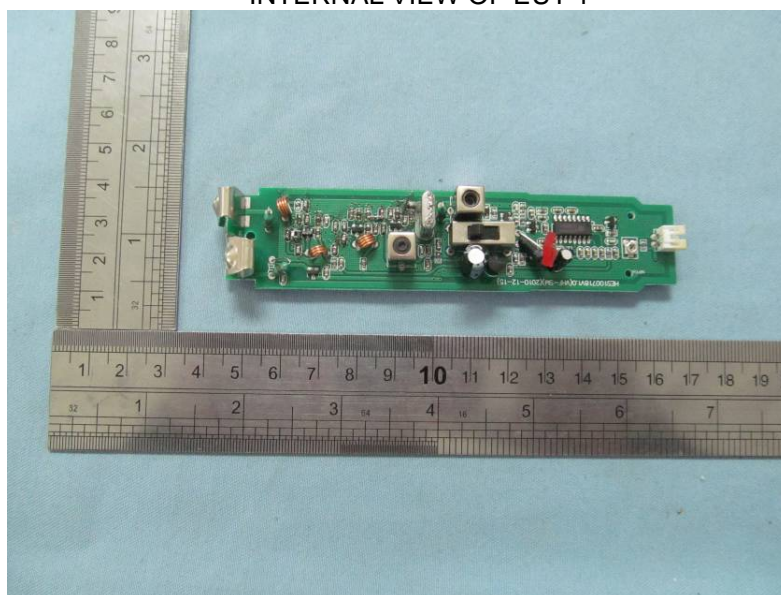
### **INTERNAL PHOTOGRAPHS OF EUT**



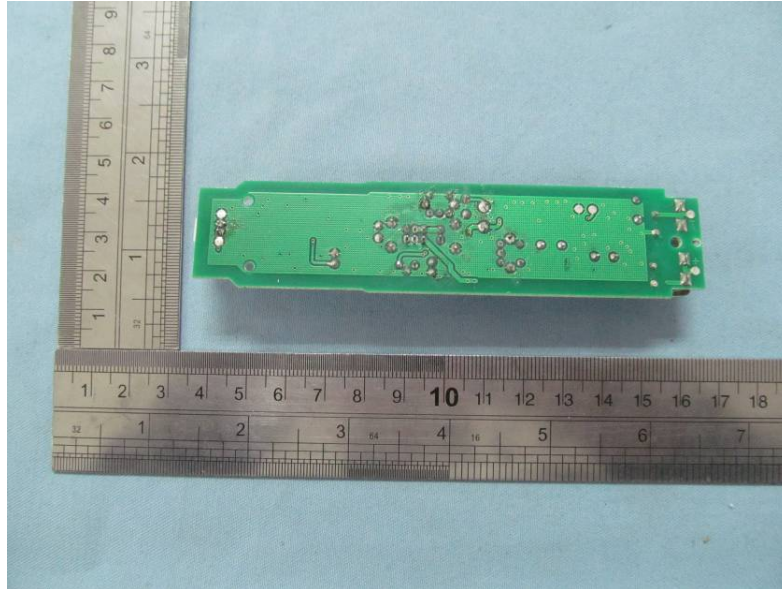
OPEN VIEW OF EUT-1



INTERNAL VIEW OF EUT-1



**INTERNAL VIEW OF EUT-2**



**---END OF REPORT---**