

FCC TEST REPORT

FCC ID : ZR9-02243
Applicant : Product Innovator Limited
Address : Room 1918, 19/F, Delta House, 3 On Yiu Street, Shatin, HONG KONG

Equipment Under Test (EUT) :

Product Name : 2.4GHz Dongle
Model No. : 02243

Standards : FCC Part 15.247:2009

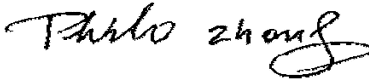
Date of Test : July 18, 2011 ~ July 20, 2011

Date of Issue : July 26, 2011

Test Engineer : Hunk yan



Reviewed By : Philo zhong



Test Result	: PASS
--------------------	---------------

Prepared By:

Waltek Services (Shenzhen) Co., Ltd.

1/F, Fukangtai Building, West Baima Rd., Songgang Street, Baoan District,
Shenzhen 518105, China

Tel :+86-755-27553488

Fax:+86-755-27553868

- ✧ The sample detailed above has been tested to the requirements of Council Directives ANSI C63.4:2003. The test results have been reviewed against the Directives above and found to meet their essential requirements.

WALTEK SERVICES

Reference No.: WT11073622-D-E-F

2 Test Summary

FCC Part 15 Requirements		
Test Items	Test Requirement	Result
Radiated Spurious Emissions (30MHz to 25GHz)	15.205(a) 15.209 15.247(d)	PASS
20dB Bandwidth	15.247(a)(1)	PASS
Maximum Peak Output Power	15.247(b)(1)	PASS
Frequency Separation	15.247(a)(1)	PASS
Number of Hopping Frequency	15.247(a)(1)(iii)	PASS
Dwell time	15.247(a)(1)(iii)	PASS
Maximum Permissible Exposure (Exposure of Humans to RF Fields)	1.1307(b)(1)	PASS

3 Contents

1	COVER PAGE.....	1
2	TEST SUMMARY	2
3	CONTENTS.....	3
4	GENERAL INFORMATION	4
4.1	CLIENT INFORMATION.....	4
4.2	GENERAL DESCRIPTION OF E.U.T.	4
4.3	DETAILS OF E.U.T.....	4
4.4	DESCRIPTION OF SUPPORT UNITS.....	4
4.5	STANDARDS APPLICABLE FOR TESTING	4
4.6	TEST FACILITY	5
4.7	TEST LOCATION	5
5	EQUIPMENT USED DURING TEST	6
6	CONDUCTED EMISSION	8
7	RADIATED SPURIOUS EMISSIONS.....	9
8	RADIATED EMISSIONS WHICH FALL IN THE RESTRICTED BANDS.....	20
9	20 DB BANDWIDTH MEASUREMENT.....	21
10	MAXIMUM PEAK OUTPUT POWER	23
11	HOPPING CHANNEL SEPARATION.....	24
12	NUMBER OF HOPPING FREQUENCY	27
13	DWELL TIME	28
14	ANTENNA REQUIREMENT	31
15	RF EXPOSURE	31
16	PHOTOGRAPHS - CONSTRUCTIONAL DETAILS.....	33
16.1	EUT – COMPONENT VIEW	33
16.2	EUT – APPEARANCE VIEW1	33
16.3	EUT – APPEARANCE VIEW2.....	34
16.4	EUT – OPEN VIEW1	34
16.5	EUT – OPEN VIEW2	35
16.6	PCB – FRONT VIEW	35
16.7	PCB – BACK VIEW	36
17	FCC LABEL.....	37

4 General Information

4.1 Client Information

Applicant : Product Innovator Limited
Address of Applicant : Room 1918, 19/F, Delta House, 3 On Yiu Street, Shatin, HONG KONG

Manufacturer : Dongguan Seagull Printing Co., Ltd.
Address of Manufacturer : Dongshan industrial District, Aobeiwei, Zhangmutou Town, Dongguan City, Guangdong Province, China

4.2 General Description of E.U.T.

Product Name : 2.4GHz Dongle
Model No. : 02243

4.3 Details of E.U.T.

Technical Data : DC 5.0V, Internal Li-battery 3.7V
Operation Frequency : 2404MHz ~ 2476MHz
Antenna Gain : 1.3dBi

4.4 Description of Support Units

The EUT has been tested as an independent unit.

4.5 Standards Applicable for Testing

The customer requested FCC tests for a 2.4GHz Dongle. The standards used were FCC Part 15.247:2009, Part 15.209:2009.

4.6 Test Facility

The test facility has a test site registered with the following organizations:

- **IC – Registration No.: IC7760A**

Waltek Services(Shenzhen) Co., Ltd. has been registered and fully described in a report filed with the Industry Canada. The acceptance letter from the Industry Canada is maintained in our files. Registration 7760A, Aug.03, 2010.

- **FCC – Registration No.: 880581**

Waltek Services(Shenzhen) Co., Ltd. EMC Laboratory has been registered and fully described in a report filed with the (FCC) Federal Communications Commission. The acceptance letter from the FCC is maintained in our files. Registration 880581, May 26, 2011.

4.7 Test Location

All the tests were performed at:

Waltek Services(Shenzhen) Co., Ltd. at 1/F, Fukangtai Building, West Baima Rd.,Songgang Street, Baoan District, Shenzhen, China

5 Equipment Used during Test

Equipment Name	Manufacturer Model	Equipment No	Internal No	Specification	Cal. Date	Due Date	Cert. No	Uncertainty
EMC Analyzer	Agilent/ E7405A	MY45114943	W2008001	9k-26.5GHz	Aug.03, 2010	Aug.03, 2011	Wws20081596	±1dB
Trilog Broadband Antenne	SCHWARZBECK MESS-ELEKTROM / VULB9163	336	W2008002	30-3000 MHz	Aug.03, 2010	Aug.03, 2011	-	±1dB
Broad-band Horn Antenna	SCHWARZBECK MESS-ELEKTROM / BBHA 9120D(1201)	667	W2008003	1-18GHz	Aug.03, 2010	Aug.03, 2011	-	f<10 GHz: ±1dB 10GHz<f<18 GHz: ±1.5dB
Broadband Preamplifier	SCHWARZBECK MESS-ELEKTROM / BBV 9718	9718-148	W2008004	0.5-18GHz	Aug.03, 2010	Aug.03, 2011	-	±1.2dB
10m Coaxial Cable with N-male Connectors	SCHWARZBECK MESS-ELEKTROM / AK 9515 H	-	-	-	Aug.03, 2010	Aug.03, 2011	-	-
10m 50 Ohm Coaxial Cable	SCHWARZBECK MESS-ELEKTROM / AK 9513	-	-	-	Aug.03, 2010	Aug.03, 2011	-	-
Positioning Controller	C&C LAB/ CC-C-IF	-	-	-	Aug.03, 2010	Aug.03, 2011	-	-
Color Monitor	SUNSPOT/ SP-14C	-	-	-	Aug.03, 2010	Aug.03, 2011	-	-
Test Receiver	ROHDE&SCHWARZ/ ESPI	101155	W2005001	9k-3GHz	Aug.03, 2010	Aug.03, 2011	Wws20080942	±1dB
EMI Receiver	Beijingkehuan	KH3931	-	9k-1GHz	Aug.03, 2010	Aug.03, 2011	-	-
Two-Line V-Network	ROHDE&SCHWARZ/ ENV216	100115	W2005002	50Ω/50μH	Aug.03, 2010	Aug.03, 2011	Wws20080941	±10%
Digital Power Analyzer	Em Test AG/Switzerland/ DPA 500	V0745103095	W2008012	Power: 2000VA Vol-range: 0-300V Freq_range: 10-80Hz	Aug.03, 2010	Aug.03, 2011	Wwd20081185	Voltage distinguish:0.025% Power_freq distinguish:0.02Hz
Power Source	Em Test AG/Switzerland/ ACS 500	V0745103096	W2008013	Vol-range: 0-300V Power_freq: 10-80Hz				

WALTEK SERVICES

Reference No.: WT11073622-D-E-F

Equipment Name	Manufacturer Model	Equipment No	Internal No	Specification	Cal. Date	Due Date	Cert. No	Uncertainty
RF Generator	TESEQ GmbH/ NSG4070	25781	W2008008	Fraq-range: 9K-1GHz RF voltage: -60 dBm- +10dBm	Aug.03, 2010	Aug.03, 2011	Wws20 081890	Power_freq distinguish0.1Hz RFelectricity distinguish 0.1 B
CDN M-Type	TESEQ GmbH/ CDN M016	25112	W2008009	Voltage correct factor 9.5 dB	Aug.03, 2010	Aug.03, 2011	Wwc20 082396	150K-80MHz: ±1dB 80-230MHz:-2-+3dB
EM-Clamp	TESEQ GmbH/ KEMZ 801	25453	W2008010	Freq_range : 0.15-1000 MHz	Aug.03, 2010	Aug.03, 2011	Wwc20 082397	0.3-400 MHz: ±4dB Other freq: ±5dB
Attenuator 6dB	TESEQ GmbH/ ATN6050	25365	-	-	Aug.03, 2010	Aug.03, 2011	Wws20 081597	-
All Modules Generator	SCHAFFNE R/6150	34579	W2008006	voltage:200V -4.4KV Pulse current: 100A-2.2KA	Aug.03, 2010	Aug.03, 2011	Wwc20 082401	voltage: ±10% Pulse current: ±10%
Capacitive Coupling Clamp	SCHAFFNE R/ CDN 8014	25311	-	-	Aug.03, 2010	Aug.03, 2011	Wwc20 082398	-
Signal and Data Line Coupling Network	SCHAFFNE R/ CDN 117	25627	W2008011	1.2/50µS	Aug.03, 2010	Aug.03, 2011	Wwc20 082399	-
AC Power Supply	TONGYUN/ DTDGC-4	-	-	-	Aug.03, 2010	Aug.03, 2011	Wws20 080944	-

6 Conducted Emission

Test Requirement: FCC Part15.207

Test Method: Base on ANSI C63.4:2003

Test Result: N/A

Remark: In the condition of continuously transmit mode, the power of EUT was supported by Internal Li-battery, so this test is not applicable.

7 Radiated Spurious Emissions

Test Requirement:	FCC Part15.209 & 15.247
Test Method:	Base on ANSI C63.4:2003
Test Result:	PASS
Frequency Range:	30MHz to 25GHz
Measurement Distance:	3m
15.209 Limit:	40.0 dBuV/m between 30MHz & 88MHz 43.5 dBuV/m between 88MHz & 216MHz 46.0 dBuV/m between 216MHz & 960MHz 54.0 dBuV/m above 960MHz
15.247 (d) Limit:	(d) In any 100 kHz bandwidth outside the frequency band in which the spread spectrum or digitally modulated intentional radiator is operating. The radio frequency power that is produced by the intentional radiator shall be at least 20 dB below that in the 100 kHz bandwidth within the band that Contains the highest level of the desired power, based on either an RF conducted or a radiated measurement, provided the transmitter demonstrates compliance with the peak conducted power limits.
Test mode:	The EUT was tested in continuously Transmit mode.

EUT Operation :

Operating Environment:

Temperature:	25.5 °C
Humidity:	51 % RH
Atmospheric Pressure:	1012 mbar

Measurement Uncertainty

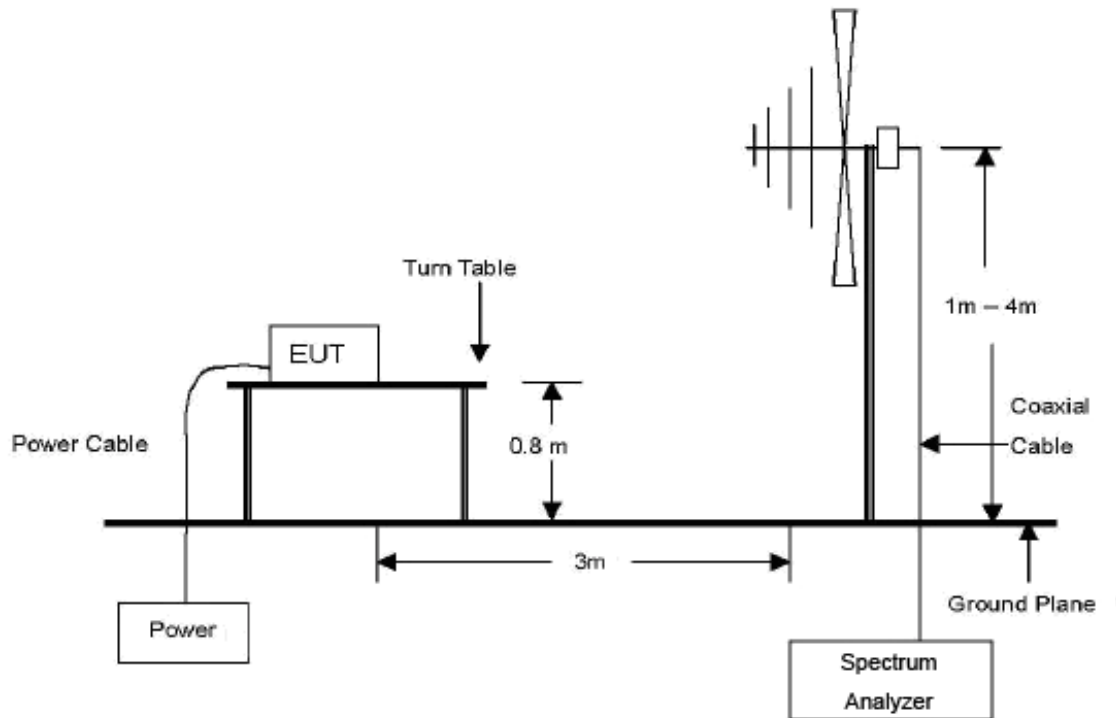
All measurements involve certain levels of uncertainties, especially in the field of EMC. The factors contributing to uncertainties are spectrum analyzer, cable loss, antenna factor calibration, antenna directivity, antenna factor variation with height, antenna phase center variation, antenna factor frequency interpolation, measurement distance variation, site imperfections, mismatch (average), and system repeatability.

Based on NIS 81, The Treatment of Uncertainty in EMC Measurements, the best estimate of the uncertainty of a radiation emissions measurement at Waltek EMC Lab is ± 5.03 dB.

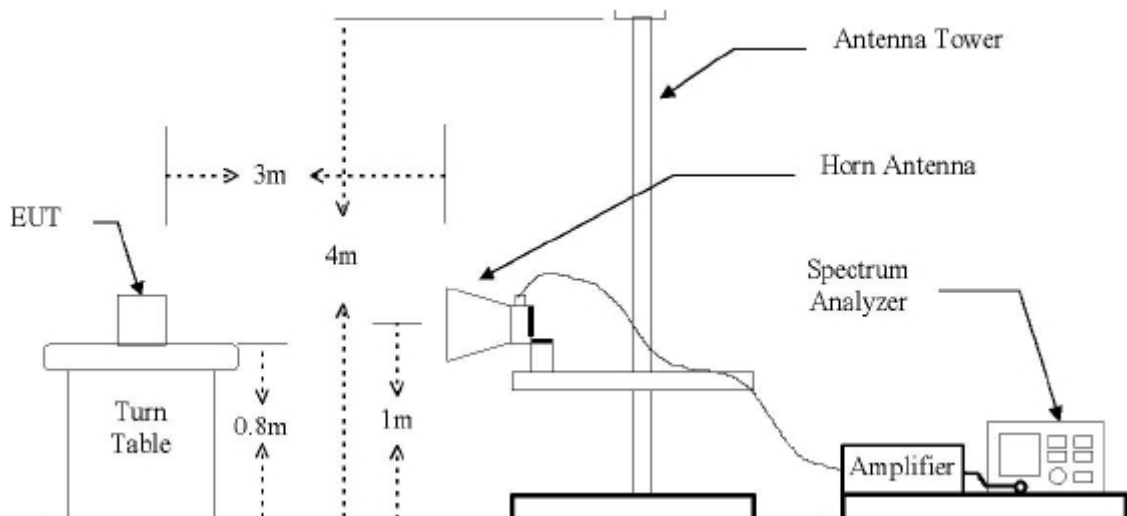
Test Setup

The radiated emission tests were performed in the 3m Semi- Anechoic Chamber test site, using the setup accordance with the ANSI C63.4:2003.

The diagram below shows the test setup that is utilized to make the measurements for emission from 30 MHz to 1 GHz Emissions.



The diagram below shows the test setup that is utilized to make the measurements for emission from 1 GHz to 25 GHz Emissions.



Spectrum Analyzer Setup

According to FCC Part15 Rules, the system was tested 30 to 25000MHz.

Below 1GHz

Start Frequency 30 MHz
Stop Frequency 1000MHz
Sweep Speed Auto
IF Bandwidth 120 KHz
Video Bandwidth 100KHz
Quasi-Peak Adapter Bandwidth 120 KHz
Quasi-Peak Adapter Mode Normal
Resolution Bandwidth 100KHz

Above 1GHz

Start Frequency 1000 MHz
Stop Frequency 25000MHz
Sweep Speed Auto
IF Bandwidth 120 KHz
Video Bandwidth 1MHz
Quasi-Peak Adapter Bandwidth 120 KHz
Quasi-Peak Adapter Mode Normal
Resolution Bandwidth 1MHz

Test Procedure

1. The EUT is placed on a turntable, which is 0.8m above ground plane.
2. The turntable shall be rotated for 360 degrees to determine the position of maximum emission level.
3. EUT is set 3m away from the receiving antenna, which is moved from 1m to 4m to find out the maximum emissions.
4. Maximum procedure was performed on the six highest emissions to ensure EUT compliance.
5. And also, each emission was to be maximized by changing the polarization of receiving antenna both horizontal and vertical.
6. Repeat above procedures until the measurements for all frequencies are complete.
7. The radiation measurements are performed in X(normal uses) axis positioning. And all the modes was tested in the report.Only the worst case is shown in the report.

Corrected Amplitude & Margin Calculation

The Corrected Amplitude is calculated by adding the Antenna Factor and Cable Factor, and subtracting the Amplifier Gain from the Amplitude reading. The basic equation is as follows:

$$\text{Corr. Ampl.} = \text{Indicated Reading} + \text{Antenna Factor} + \text{Cable Factor} - \text{Amplifier Gain}$$

The “**Margin**” column of the following data tables indicates the degree of compliance with the applicable limit. For example, a margin of -7dBμV means the emission is 7dBμV below the maximum limit for Class B. The equation for margin calculation is as follows:

$$\text{Margin} = \text{Corr. Ampl.} - \text{Limit}$$

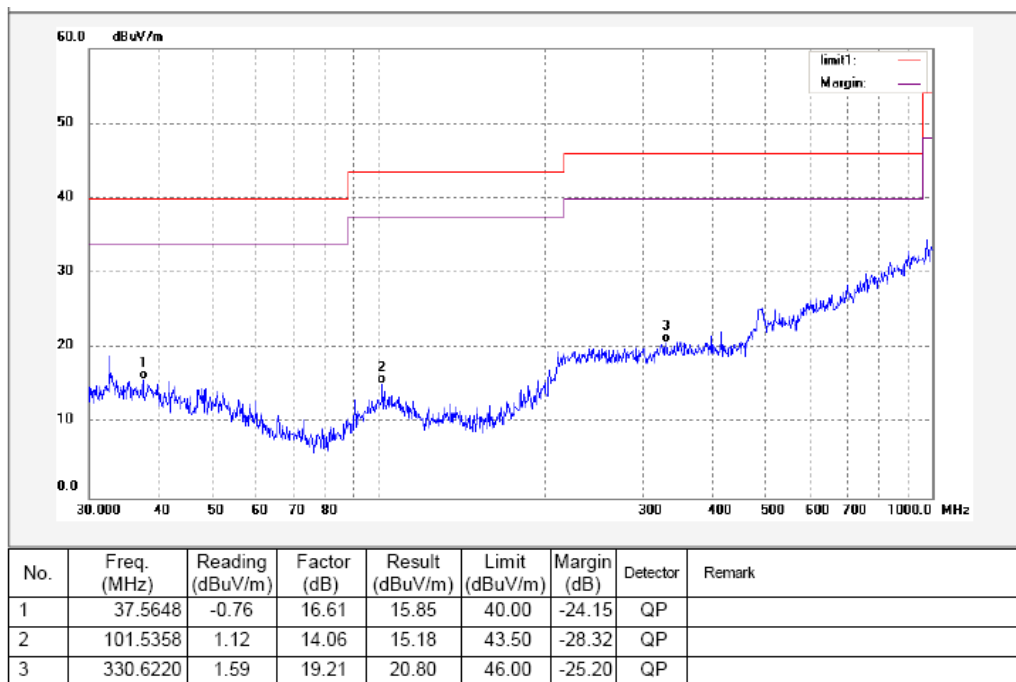
Summary of Test Results

According to the data in this section, the EUT complied with the FCC Part15.247 standards.

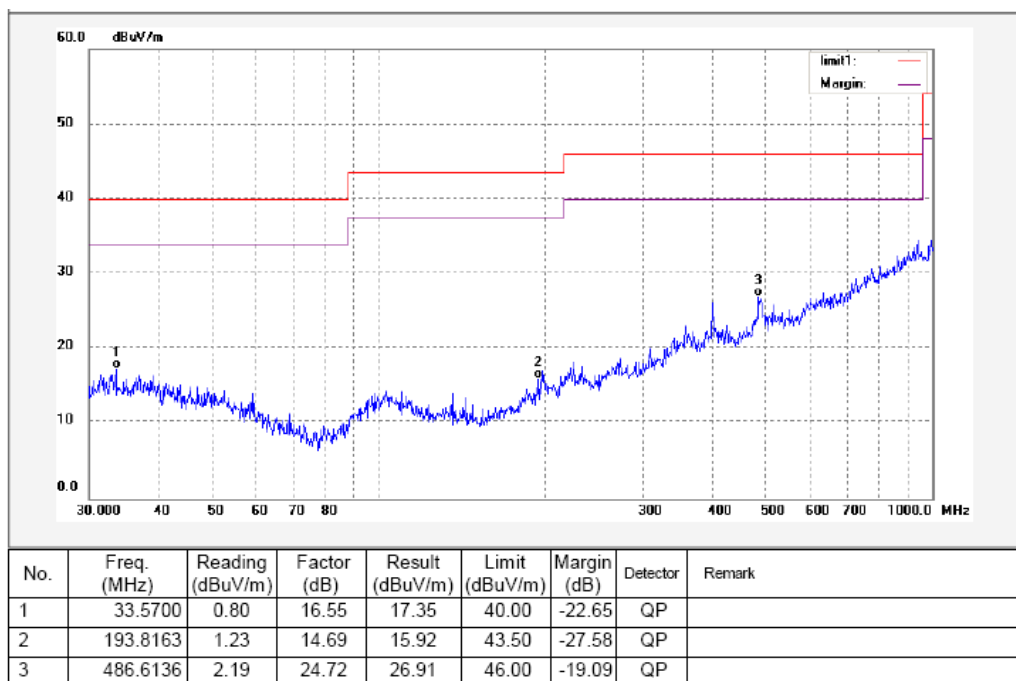
Low Channel

Test Frequency : 30MHz ~ 1000MHz

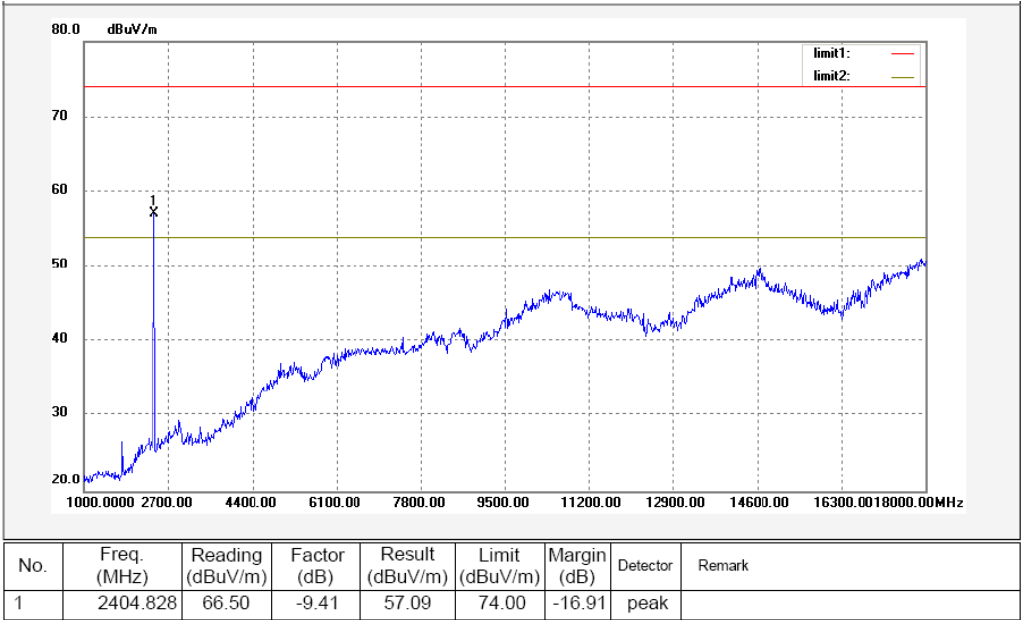
Antenna polarization: Vertical



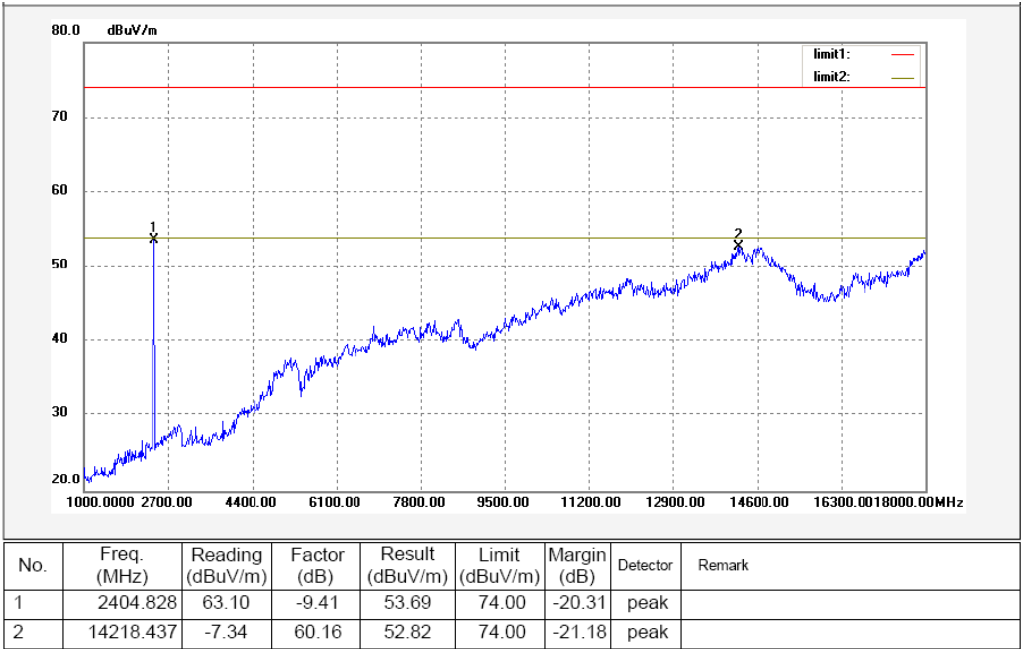
Antenna polarization: Horizontal



Test Frequency: Above 1GHz radiation test data:
Remark: above 18GHz,the test signal below the noise level,so the data was not performed.
Antenna polarization: Vertical



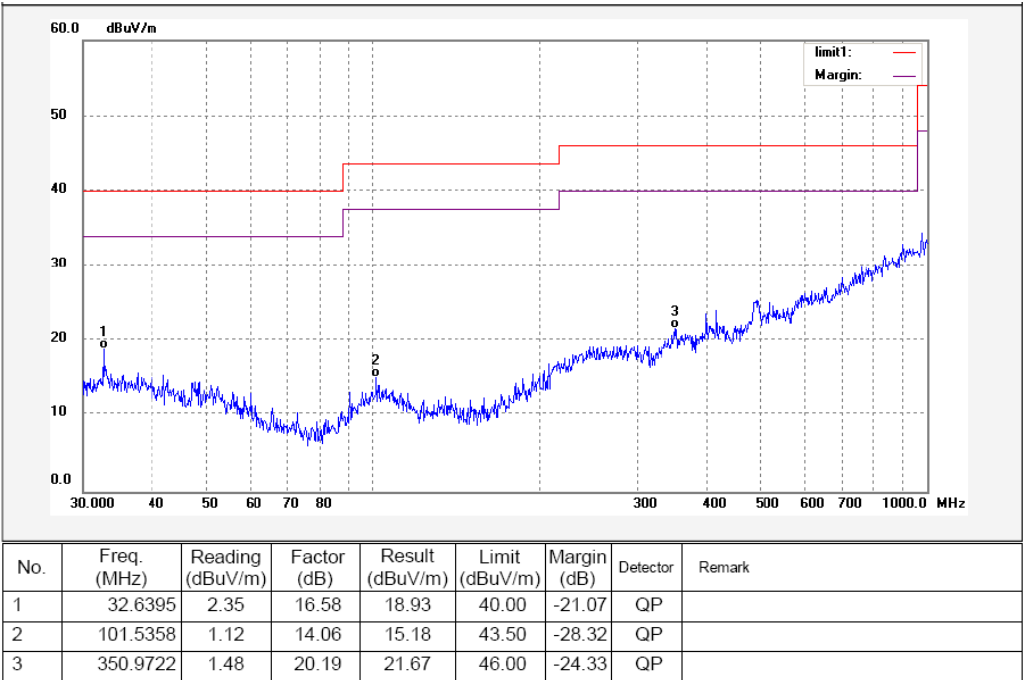
Antenna polarization: Horizontal



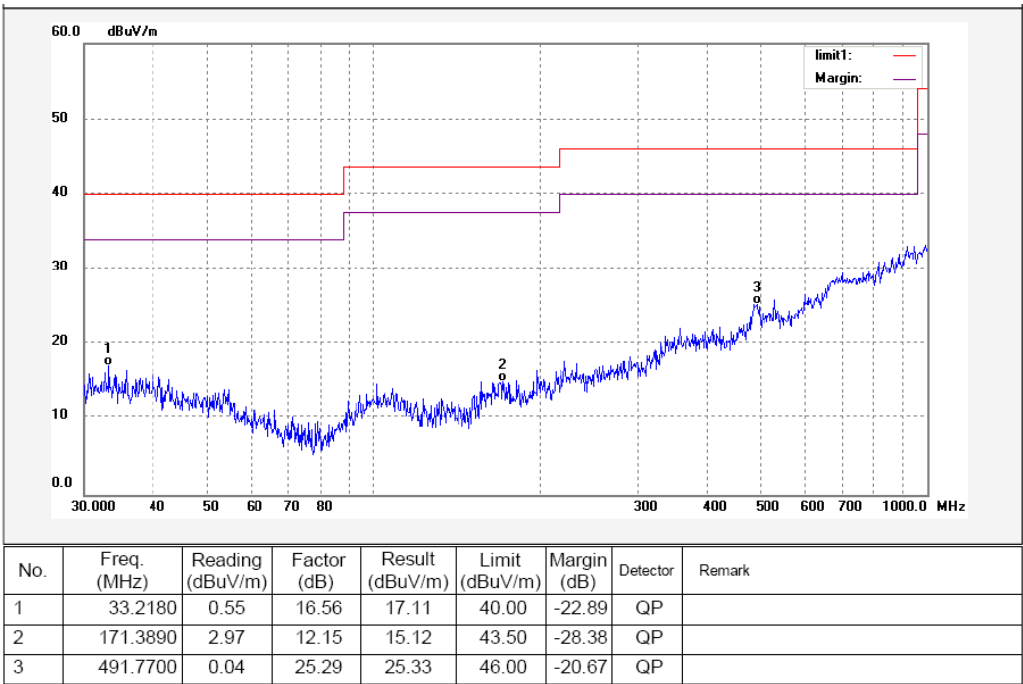
Middle Channel

Test Frequency : 30MHz ~ 1000MHz

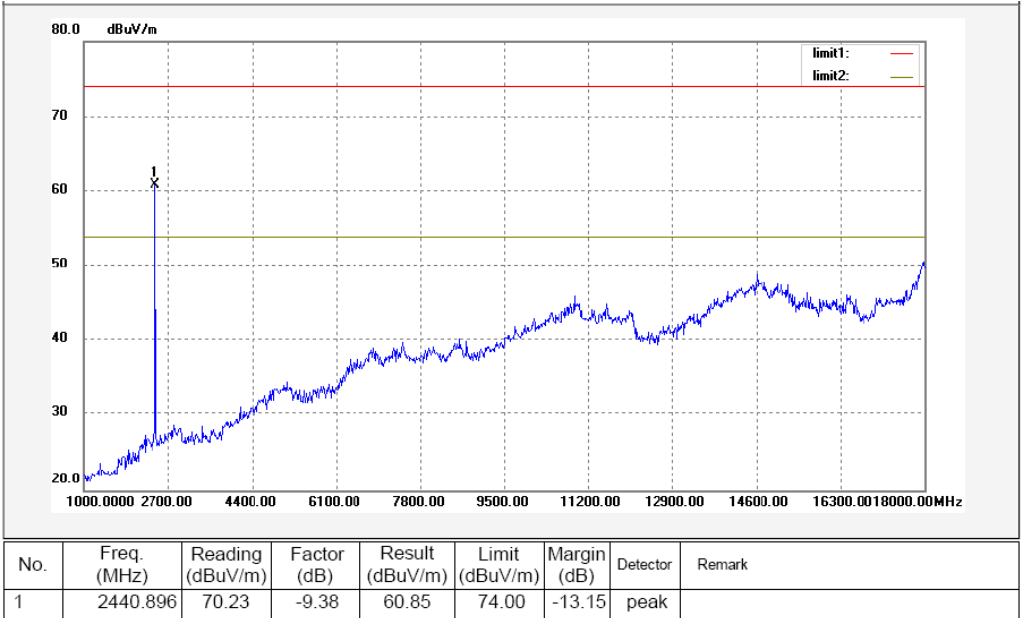
Antenna polarization: Vertical



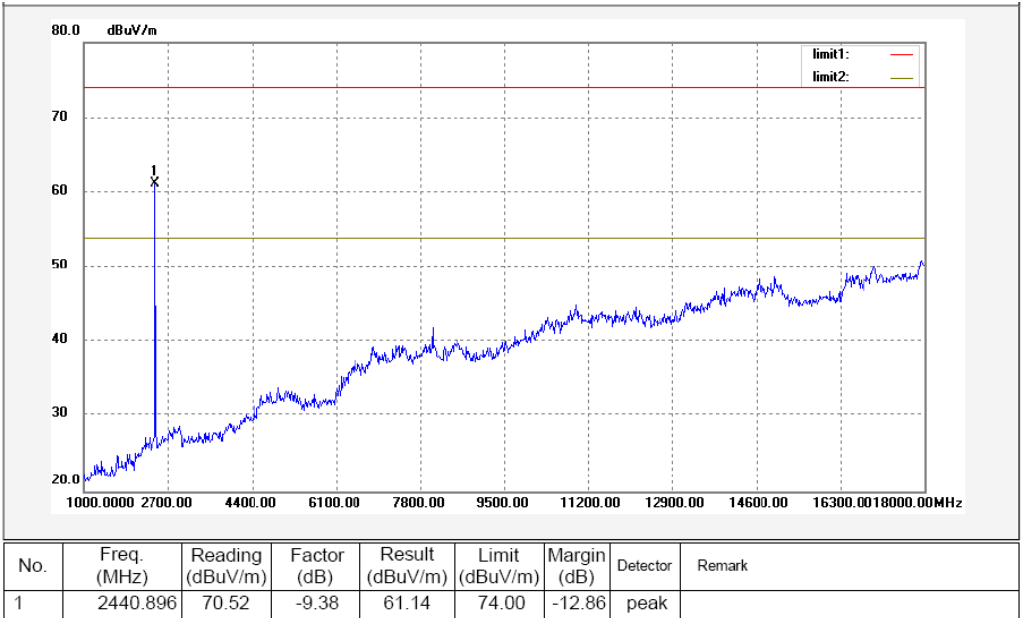
Antenna polarization: Horizontal



Test Frequency: Above 1GHz radiation test data:
Remark: above 18GHz,the test signal below the noise level,so the data was not perfomed.
Antenna polarization: Vertical



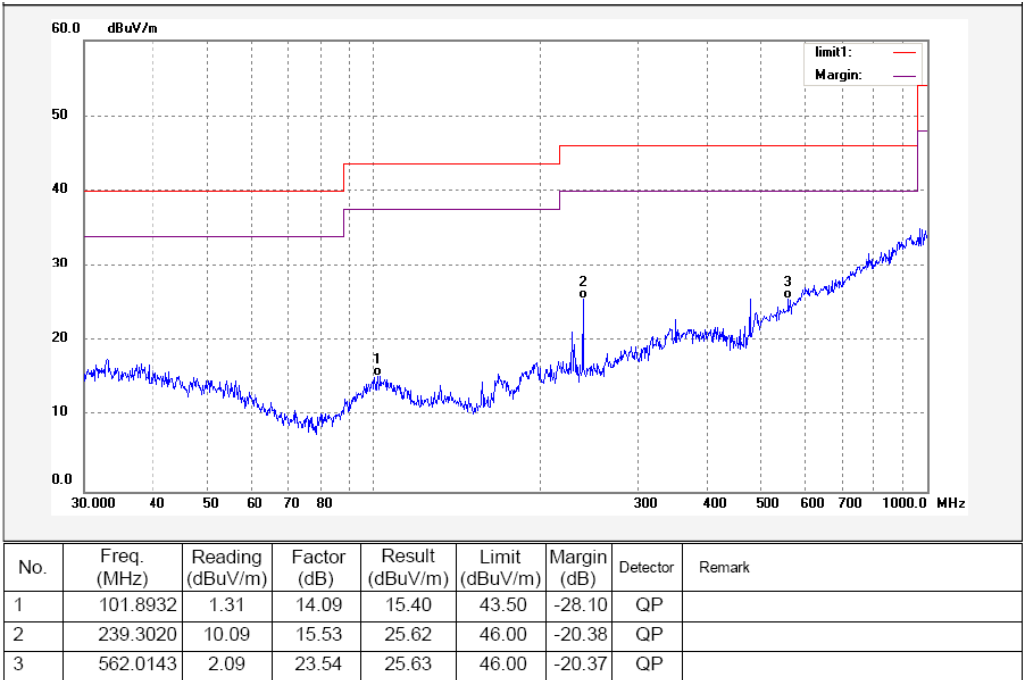
Antenna polarization: Horizontal



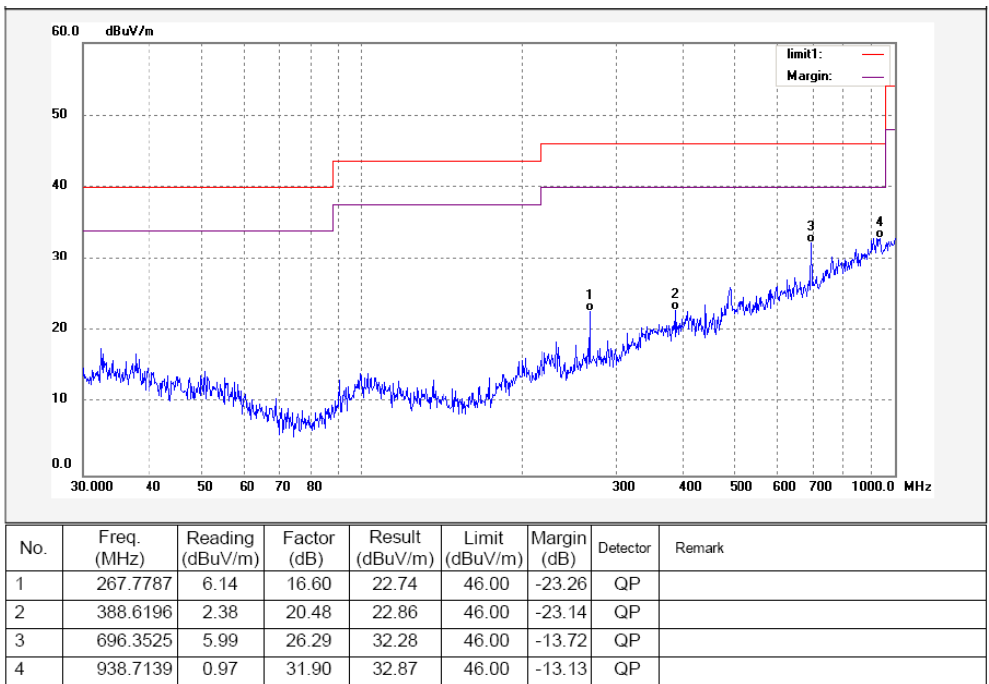
High Channel

Test Frequency : 30MHz ~ 1000MHz

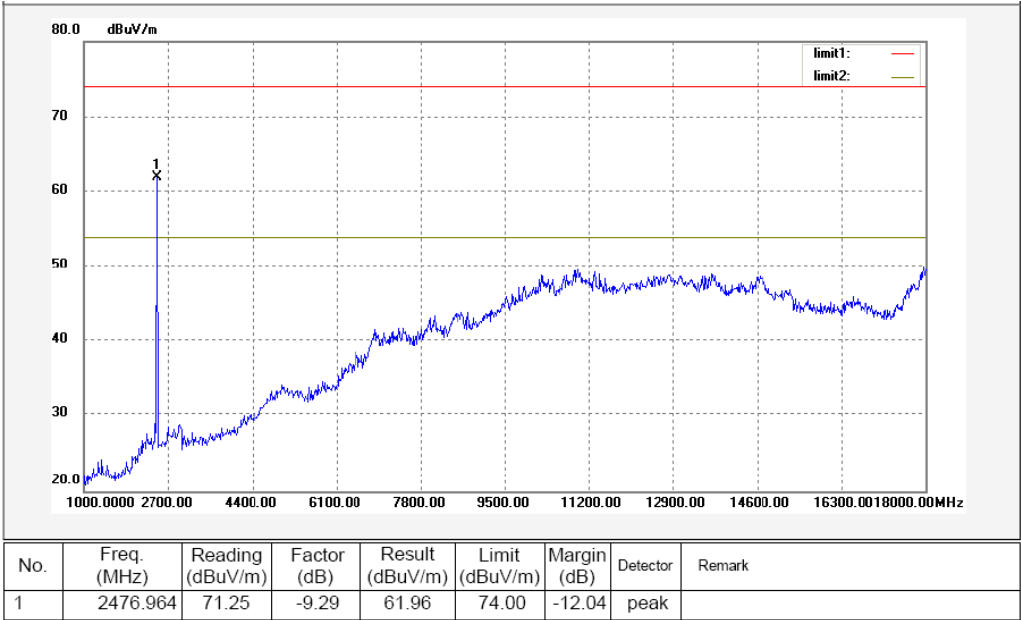
Antenna polarization: Vertical



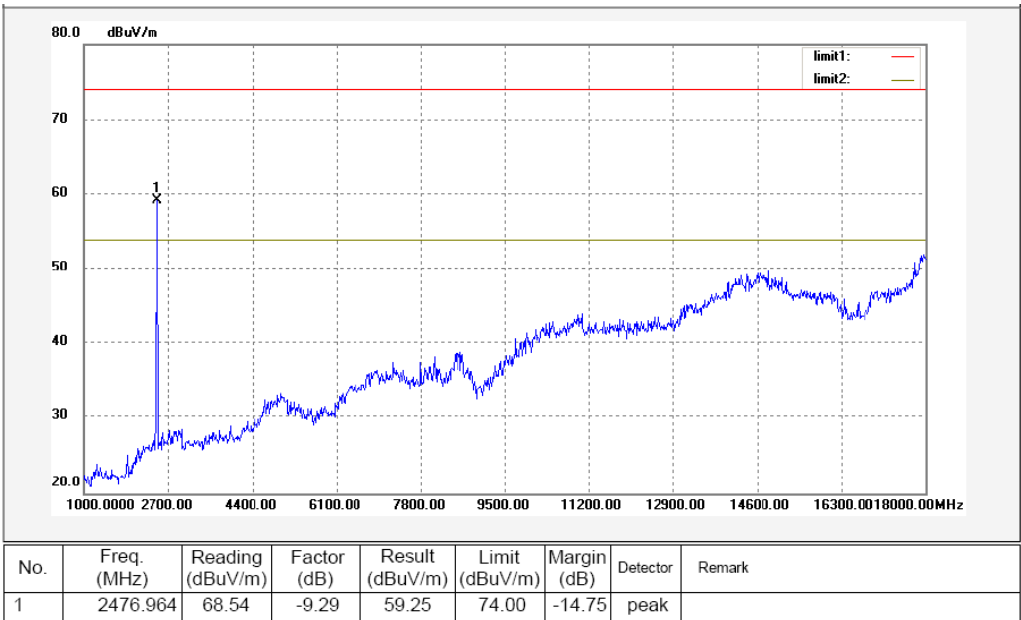
Antenna polarization: Horizontal



Test Frequency: Above 1GHz radiation test data:
Remark: above 18GHz,the test signal below the noise level,so the data was not performed.
Antenna polarization: Vertical

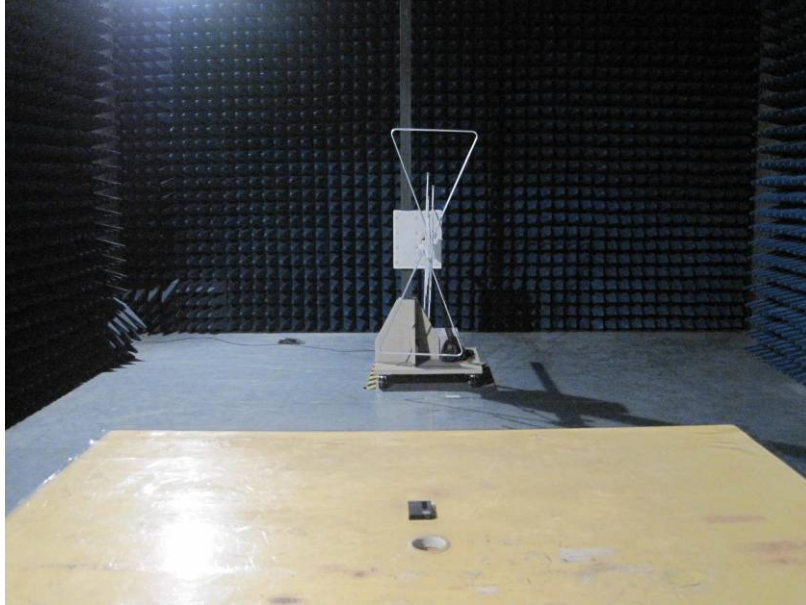


Antenna polarization: Horizontal

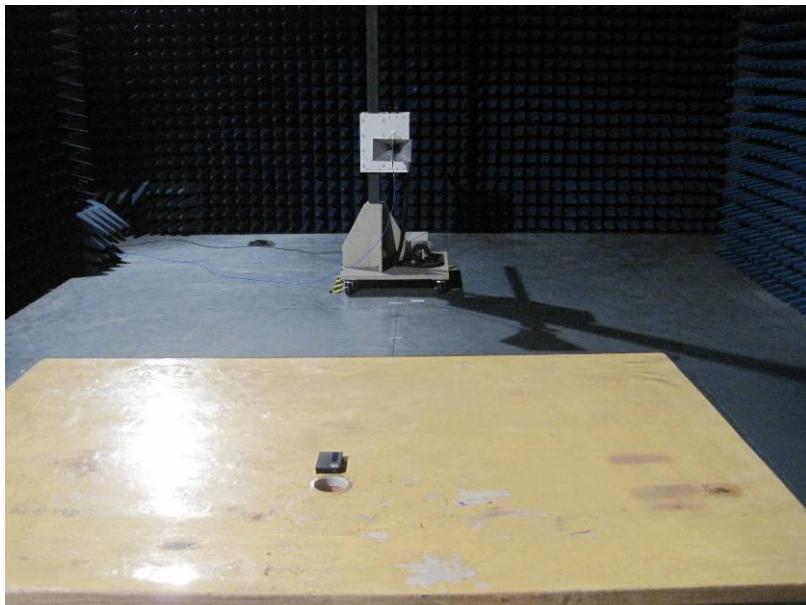


Photograph – Radiation Spurious Emission Test Setup

Below 1GHz



Above 1GHz



8 Radiated Emissions which fall in the restricted bands

Test Requirement:	Section 15.247(d) In addition, radiated emissions which fall in the restricted bands. as defined in Section 15.205(a), must also comply with the radiated emission limits specified in Section 15.209(a) (see Section 15.205(c)).
Test Method:	Base on ANSI C63.4:2003
Measurement Distance:	3m
Limit:	40.0 dBuV/m between 30MHz & 88MHz; 43.5 dBuV/m between 88MHz & 216MHz; 46.0 dBuV/m between 216MHz & 960MHz; 54.0 dBuV/m above 960MHz. 74.0 dBuV/m for peak above 1GHz 54.0 dBuV/m for AVG above 1GHz
Detector:	For Peak value: RBW = 1 MHz for $f \geq 1$ GHz VBW \geq RBW; Sweep = auto Detector function = peak Trace = max hold For AVG value: RBW = 1 MHz for $f \geq 1$ GHz VBW = 10Hz; Sweep = auto Detector function = AVG Trace = max hold

Test Result:

1. Low Channel

Frequency (MHz)	Peak Emission Level (dBuV/m)	AVG Emission Level (dBuV/m)
2390	59.91	47.42
2483.5	51.47	44.06

2. High Channel

Frequency (MHz)	Peak Emission Level (dBuV/m)	AVG Emission Level (dBuV/m)
2390	52.27	44.26
2483.5	60.72	45.74

9 20 dB Bandwidth Measurement

Test Requirement: FCC Part 15 C
 Test Method: Based on FCC Part 15.247
 Test Mode: Test in fixing operating frequency at low, Middle, high channel.

Test Procedure:

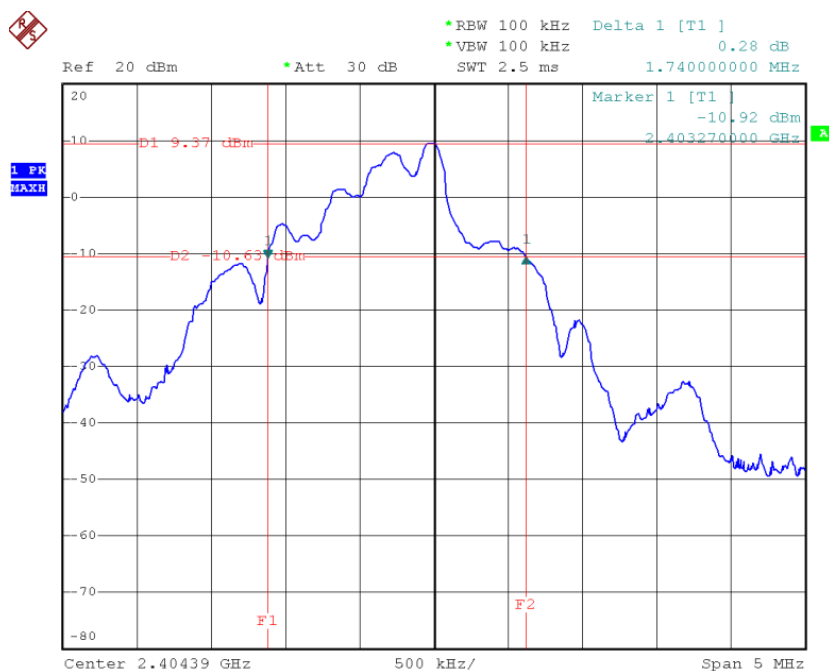
1. Remove the antenna from the EUT and then connect a low RF cable from the antenna port to the spectrum;
2. Set the spectrum analyzer: Span = 5MHz, RBW = 100kHz, VBW = 100kHz

Test Result:

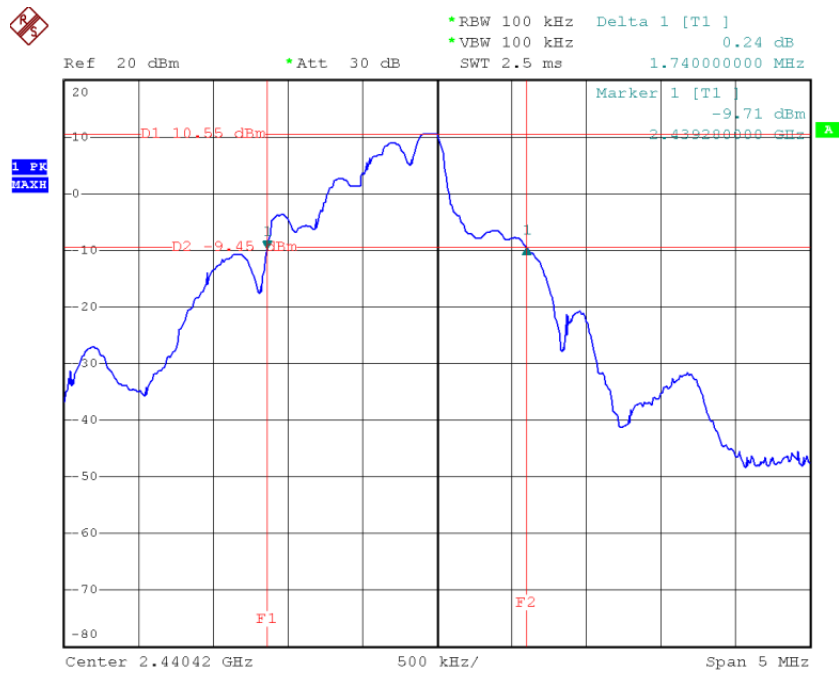
Test Channel	Bandwidth
Low	1.74MHz
Middle	1.74MHz
High	1.74MHz

Test result plot as follows:

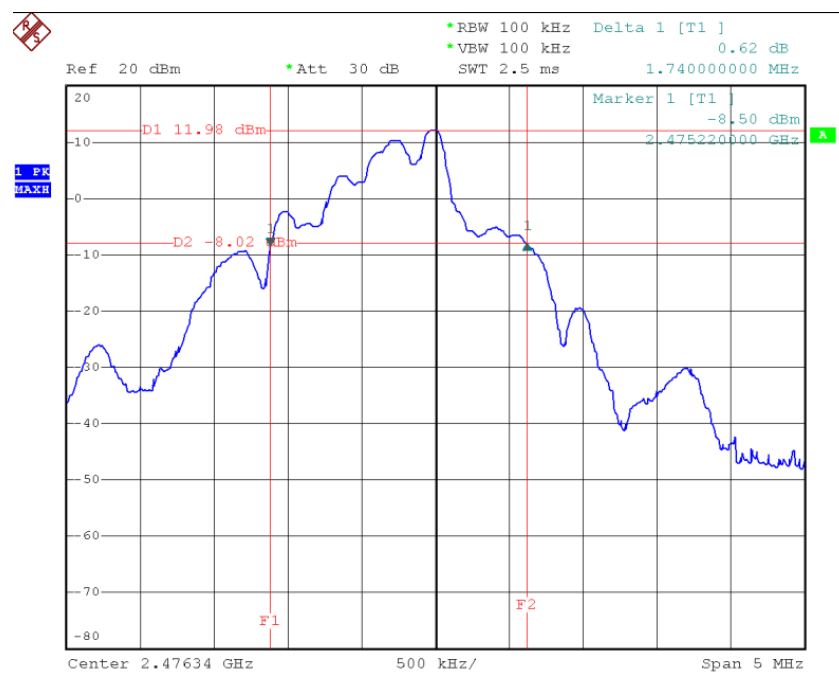
Low Channel



Middle Channel



High Channel



10 Maximum Peak Output Power

Test Requirement:	FCC Part 15.247
Test Method:	Based on ANSI C63.4:2003
Test Limit:	Regulation 15.247 (b)(1) For frequency hopping systems operating in the 2400-2483.5 MHz band employing at least 75 non-overlapping hopping channels, and all frequency hopping systems in the 5725-5850 MHz band: 1 watt. For all other frequency hopping systems in the 2400-2483.5 MHz band: 0.125 watts. Refer to the result “Number of Hopping Frequency” of this document. The 0.125watts (20.97 dBm) limit applies.
Test mode:	Test in fixing frequency transmitting mode.

Test Procedure:

1. Remove the antenna from the EUT and then connect a low RF cable from the antenna port to the spectrum.
2. Set the spectrum analyzer: RBW = 1 MHz. VBW = 1 MHz. Sweep = auto; Detector Function = Peak.
3. Keep the EUT in transmitting at lowest, medium and highest channel individually. Record the max value.

Test Result:

Test Channel	Output Power (dBm)	Limit (dBm)
Low	9.42	20.97
Middle	10.54	20.97
High	11.99	20.97

11 Hopping Channel Separation

Test Requirement:	FCC Part 15.247
Test Method:	Based on FCC Part 15.247
Test Limit:	Regulation 15.247(a)(1) Frequency hopping systems shall have hopping channel carrier frequencies separated by a minimum of 25 kHz or the 20 dB bandwidth of the hopping channel, whichever is greater. Alternatively, frequency hopping systems operating in the 2400-2483.5 MHz band may have hopping channel carrier frequencies that are separated by 25 kHz or two-thirds of the 20 dB bandwidth of the hopping channel, whichever is greater, provided the systems operate with an output power no greater than 125 mW.
Test Mode:	Test in hopping transmitting operating mode.

Test Procedure:

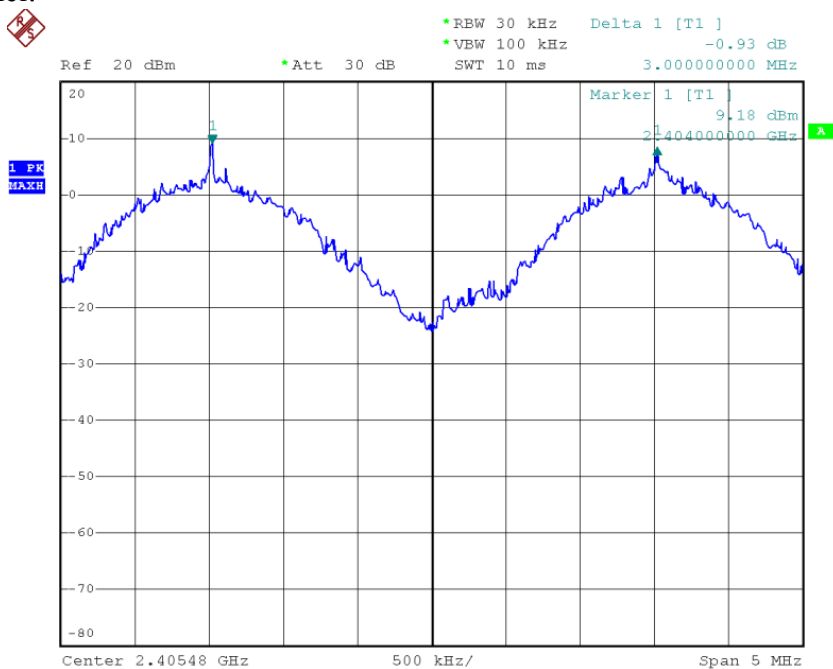
1. Remove the antenna from the EUT and then connect a low RF cable from the antenna port to the spectrum.
2. Set the spectrum analyzer: RBW = 30kHz. VBW = 100kHz , Span = 5MHz. Sweep = auto; Detector Function = Peak. Trace = Max hold.
3. Allow the trace to stabilize. Use the marker-delta function to determine the separation between the peaks of the adjacent channels. The limit is specified in one of the subparagraphs of this Section Submit this plot.

Test Result:

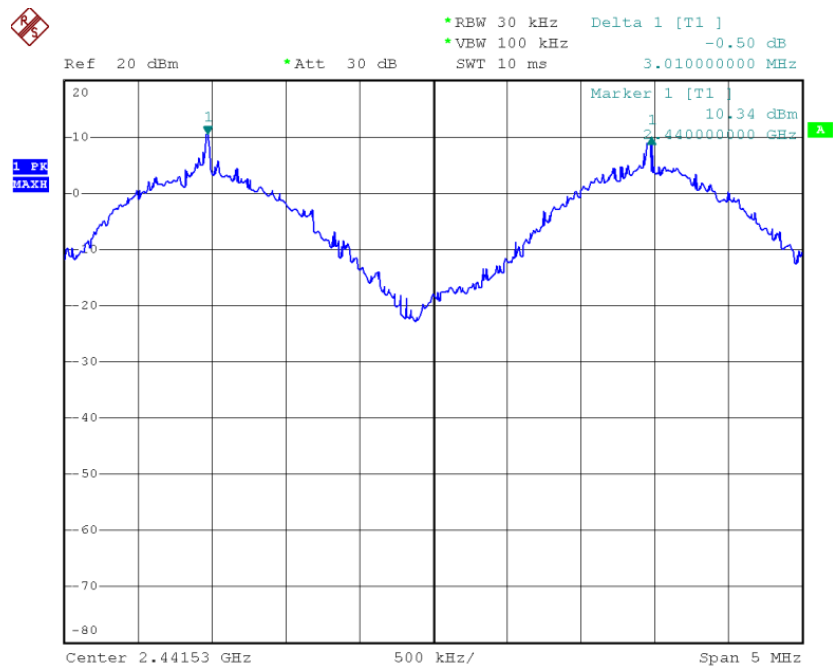
Test Channel	Separation (MHz)	Result
Low	3.00	PASS
Middle	3.01	PASS
High	2.99	PASS

Test result plot as follows:

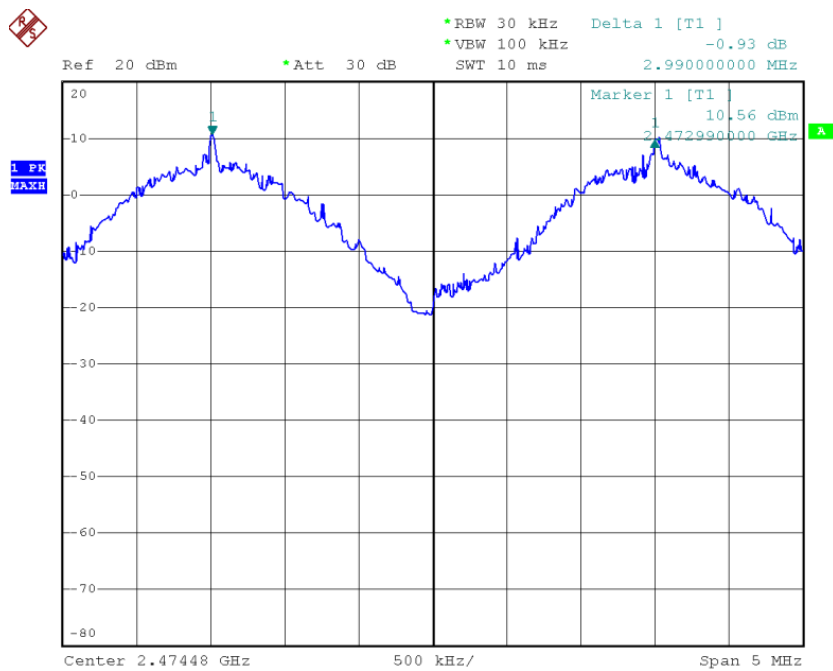
Low Channel:



Middle Channel



High Channel



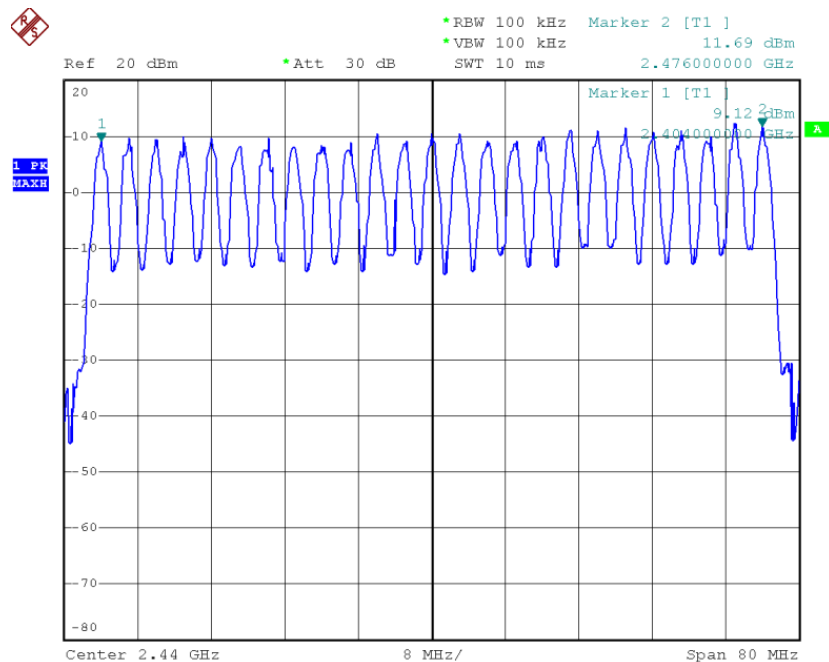
12 Number of Hopping Frequency

Test Requirement:	FCC Part 15.247
Test Method:	Based on FCC Part 15.247
Test Limit:	Regulation 15.247 (a)(1)(iii) Frequency hopping systems in the 2400-2483.5 MHz band shall use at least 15 channels.
Test Mode:	Test in hopping transmitting operating mode.

Test Procedure:

1. Remove the antenna from the EUT and then connect a low RF cable from the antenna port to the spectrum.
2. Set the spectrum analyzer: RBW = 100 kHz. VBW = 100 kHz. Sweep = auto; Detector Function = Peak. Trace = Max hold.
3. Allow the trace to stabilize. It may prove necessary to break the span up to sections. in order to clearly show all of the hopping frequencies. The limit is specified in one of the subparagraphs of this Section.
4. Set the spectrum analyzer: start frequency = 2402MHz. stop frequency = 2486MHz. Submit the test result graph.

Test Result: Total Channels are 25 Channels.



13 Dwell Time

Test Requirement:	FCC Part 15.247
Test Method:	Based on FCC Part 15.247
Test Limit:	Regulation 15.247(a)(1)(iii) Frequency hopping systems in the 2400-2483.5 MHz band shall use at least 15 channels. The average time of occupancy on any channel shall not be greater than 0.4 seconds within a period of 0.4 seconds multiplied by the number of hopping channels employed. Frequency hopping systems may avoid or suppress transmissions on a particular hopping frequency provided that a minimum of 15 channels are used.
Test Mode:	Test in hopping transmitting operating mode.

Test Procedure:

- 1.Remove the antenna from the EUT and then connect a low RF cable from the antenna port to the spectrum.
- 2.Set spectrum analyzer span = 0. centered on a hopping channel;
- 3.Set RBW = 1MHz and VBW = 1MHz.Sweep = as necessary to capture the entire dwell time per hopping channel.
- 4.Use the marker-delta function to determine the dwell time. If this value varies with different modes of operation (e.g.. data rate. modulation format. etc.). repeat this test for each variation. The limit is specified in one of the subparagraphs of this Section. Submit this plot(s).

Test Result:

Dwell time = Pulse wide x (Hopping rate / Number of channels) x Period

The test period: $T = 0.4 \text{ Second/Channel} \times 25 \text{ Channel} = 10 \text{ s}$

Low Channel: 2404MHz

Dwell time = $3.82(\text{ms}) \times (2500 / (10 \times 25)) \times 10 = 0.382\text{s}$

Middle Channel : 2440MHz

Dwell time = $3.82(\text{ms}) \times (2500 / (10 \times 25)) \times 10 = 0.382\text{s}$

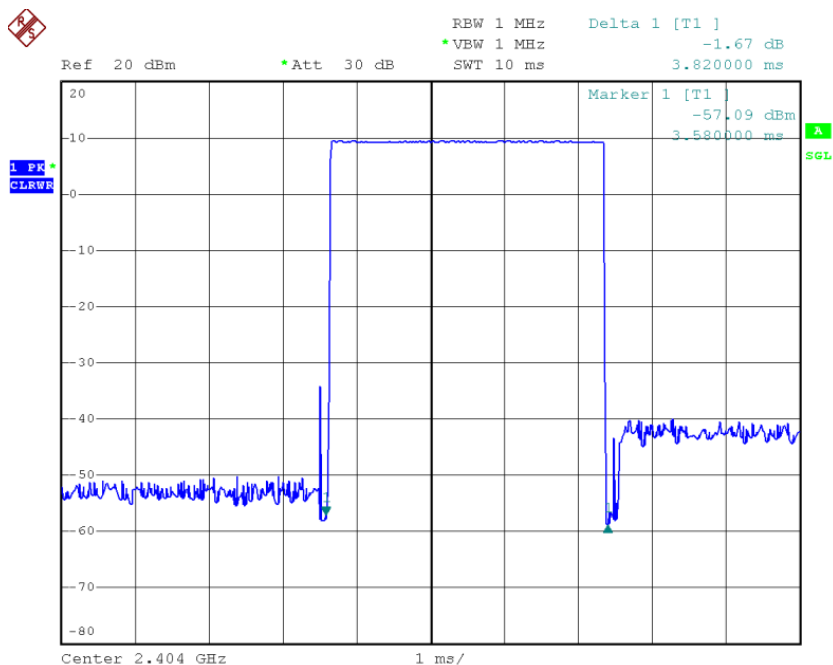
High Channel : 2476MHz

Dwell time = $3.82(\text{ms}) \times (2500 / (10 \times 25)) \times 10 = 0.382\text{s}$

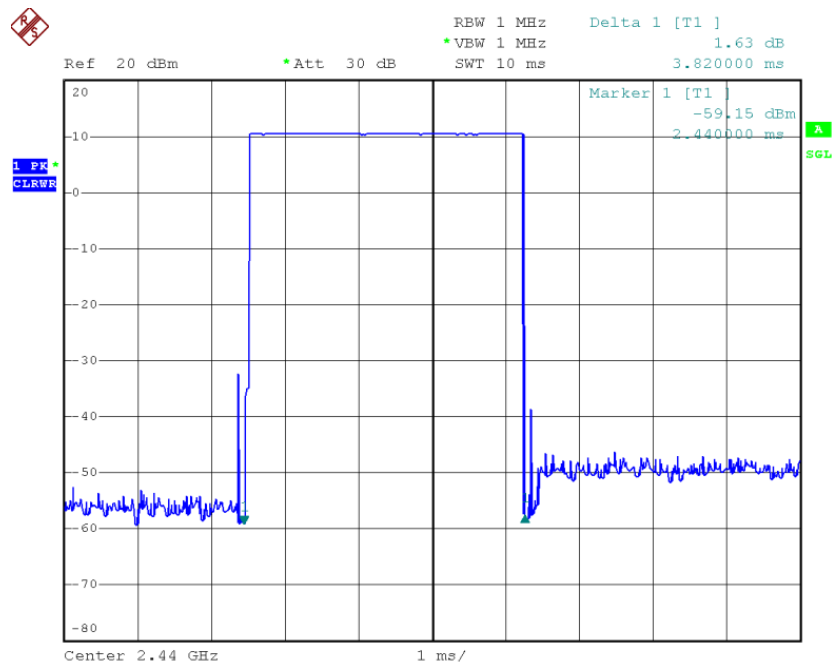
The results are less than 0.4s.

Please refer the graphs as below:

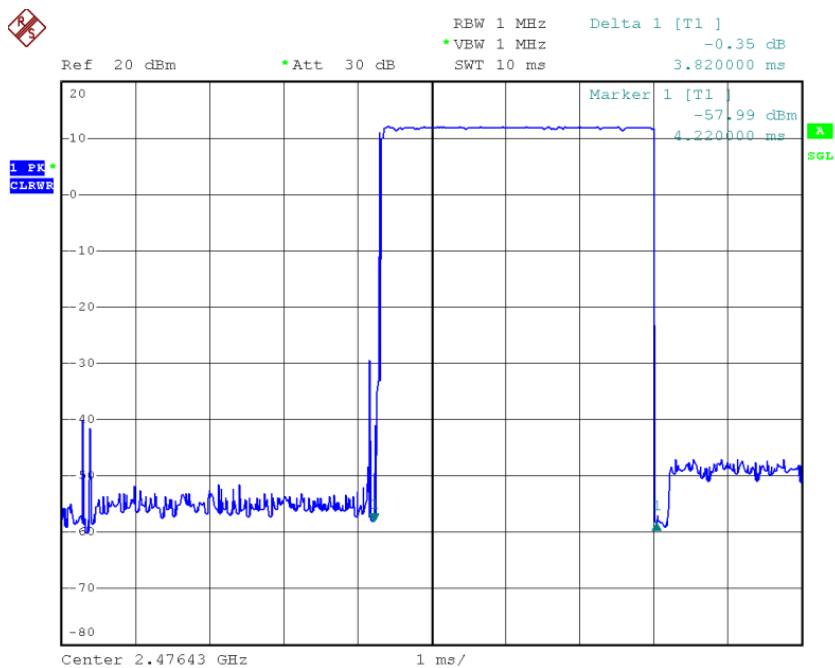
Low Channel:



Middle Channel:



High Channel:



WALTEK SERVICES

Reference No.: WT11073622-D-E-F

14 Antenna Requirement

According to the FCC Part 15 Paragraph 15.203, an intentional radiator shall be designed to ensure that no antenna other than that furnished by the responsible party shall be used with the device. The use of a permanently attached antenna or of an antenna that uses a unique coupling to the intentional radiator shall be considered sufficient to comply with the provisions of this section. This product has a permanent antenna, fulfill the requirement of this section.

15 RF Exposure

Test Requirement: FCC Part 1.1307
 Test Method: Based on FCC Part 15.247
 Test Mode: The EUT work in test mode(Tx).

Requiments:

Systems operating under the provisions of this section shall be operated in a manner that ensures that the public is not exposed to radio frequency energy levels in excess limit for maximum permissible exposure. In accordance with 47 CFR FCC Part 2 Subpart J, section 2.1091 this device has been defined as a mobile device whereby a distance of 0.2 m normally can be maintained between the user and the device.

The procedures / limit

(A) Limits for Occupational / Controlled Exposure

Frequency Range (MHz)	Electric Field Strength (E) (V/m)	Magnetic Field Strength (H) (A/m)	Power Density (S) (mW/ cm ²)	Averaging Time E ² , H ² or S (minutes)
0.3-3.0	614	1.63	(100)*	6
3.0-30	1842 / f	4.89 / f	(900 / f)*	6
30-300	61.4	0.163	1.0	6
300-1500			F/300	6
1500-100,000			5	6

(B) Limits for General Population / Uncontrolled Exposure

Frequency Range (MHz)	Electric Field Strength (E) (V/m)	Magnetic Field Strength (H) (A/m)	Power Density (S) (mW/ cm ²)	Averaging Time E ² , H ² or S (minutes)
0.3-1.34	614	1.63	(100)*	30
1.34-30	824/f	2.19/f	(180/f)*	30
30-300	27.5	0.073	0.2	30
300-1500			F/1500	30
1500-100,000			1.0	30

Note: f = frequency in MHz ; *Plane-wave equivalent power density

MPE Calculation Method

$$E \text{ (V/m)} = \frac{\sqrt{30 \times P \times G}}{d} \quad \text{Power Density: } Pd \text{ (W/m}^2\text{)} = \frac{E^2}{377}$$

E = Electric field (V/m)

P = Peak RF output power (W)

G = EUT Antenna numeric gain (numeric)

d = Separation distance between radiator and human body (m)

The formula can be changed to

$$Pd = \frac{30 \times P \times G}{377 \times d^2}$$

From the peak EUT RF output power, the minimum mobile separation distance, d=0.2m, as well as the gain of the used antenna, the RF power density can be obtained

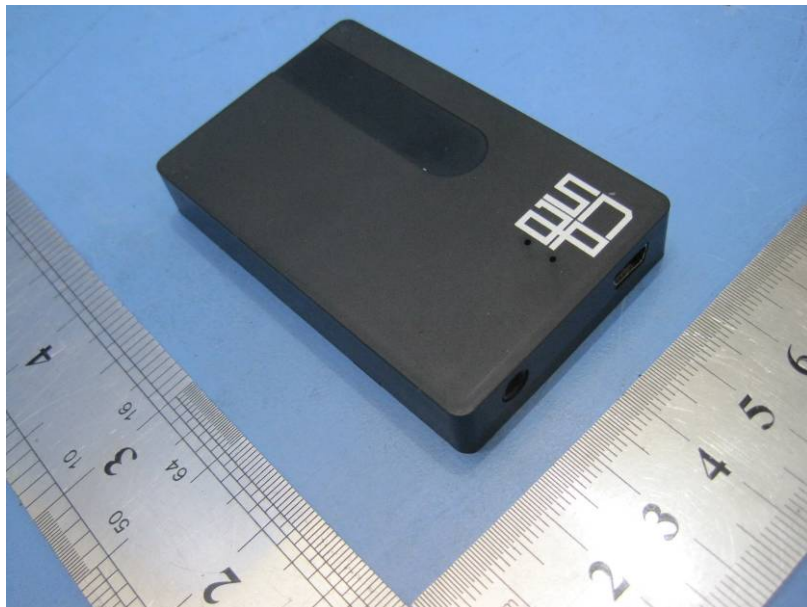
Antenna Gain (dBi)	Antenna Gain (numeric)	Peak Output Power (dBm)	Peak Output Power (mW)	Power Density (S) (mW/cm ²)	Limit of Power Density (S) (mW/cm ²)	Test Result
1.3	1.35	9.42	8.75	0.002350	1	Complies
1.3	1.35	10.54	11.32	0.003040	1	Complies
1.3	1.35	11.99	15.81	0.0042460	1	Complies

16 Photographs - Constructional Details

16.1 EUT – Component View



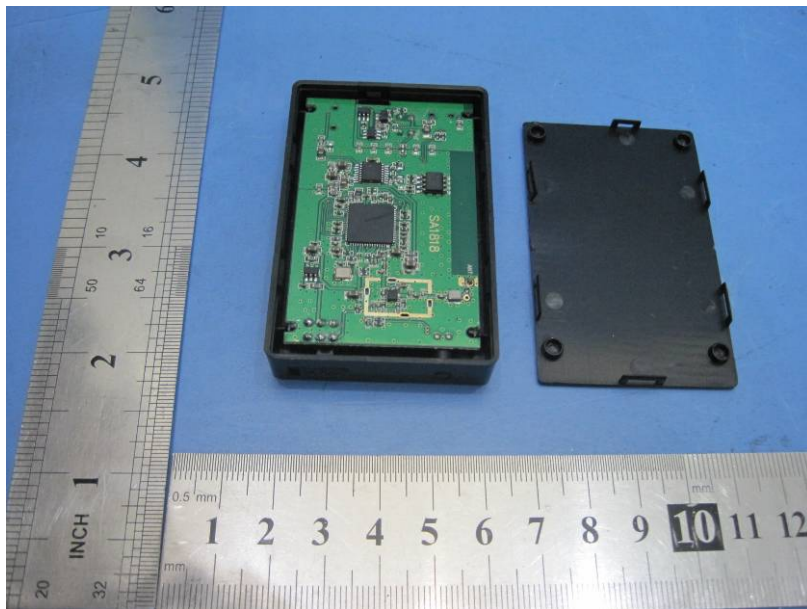
16.2 EUT – Appearance View1



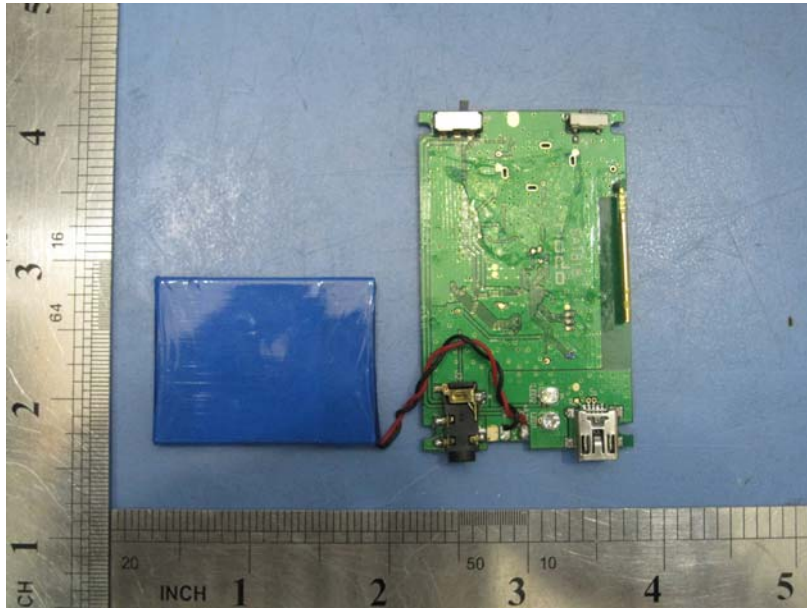
16.3 EUT – Appearance View2



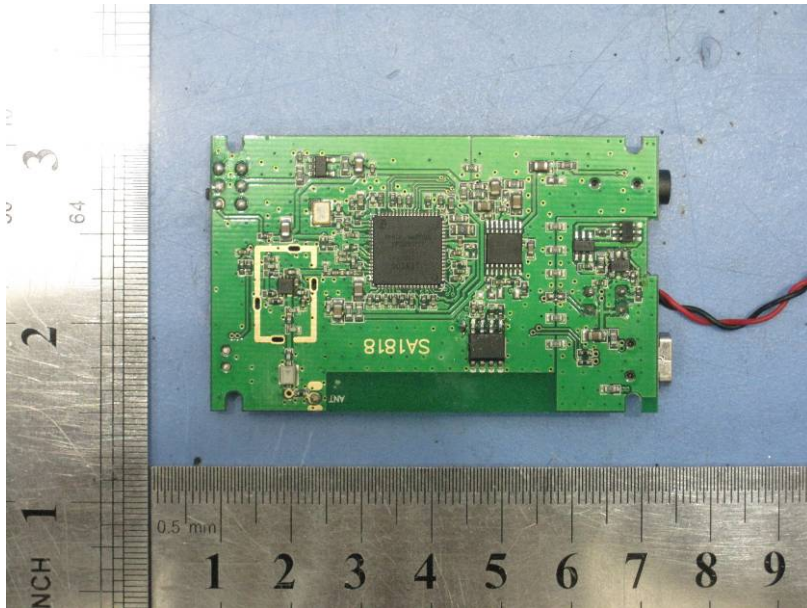
16.4 EUT – Open View1



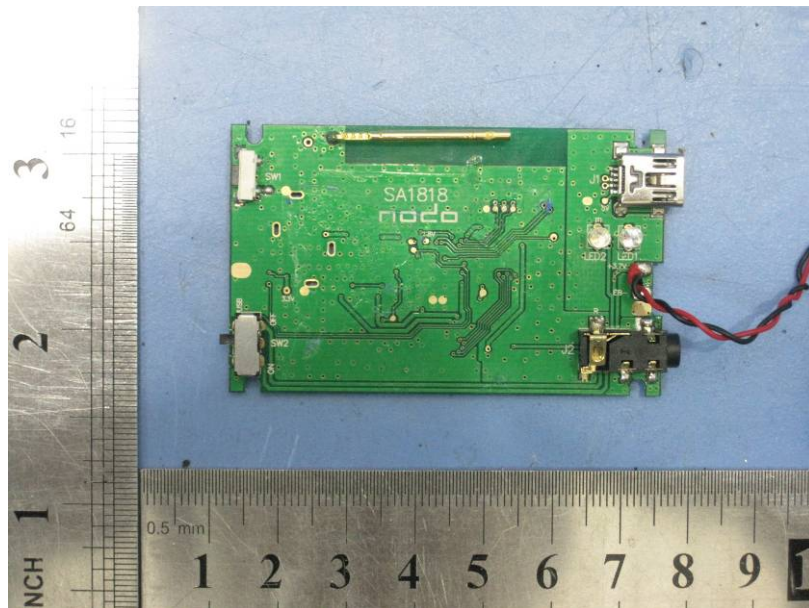
16.5 EUT – Open View2



16.6 PCB – Front View



16.7 PCB – Back View



17 FCC Label

This device complies with Part 15 of the FCC Rules. Operation is subject to the following two conditions:(1)this device may not cause harmful interference,and (2) this device must accept any interference received, including interference that may cause undesired operation

The Label must not be a stick-on paper. The Label on these products must be permanently affixed to the product and readily visible at the time of purchase and must last the expected lifetime of the equipment not be readily detachable.

