



Figure 2 - Rx IF board top

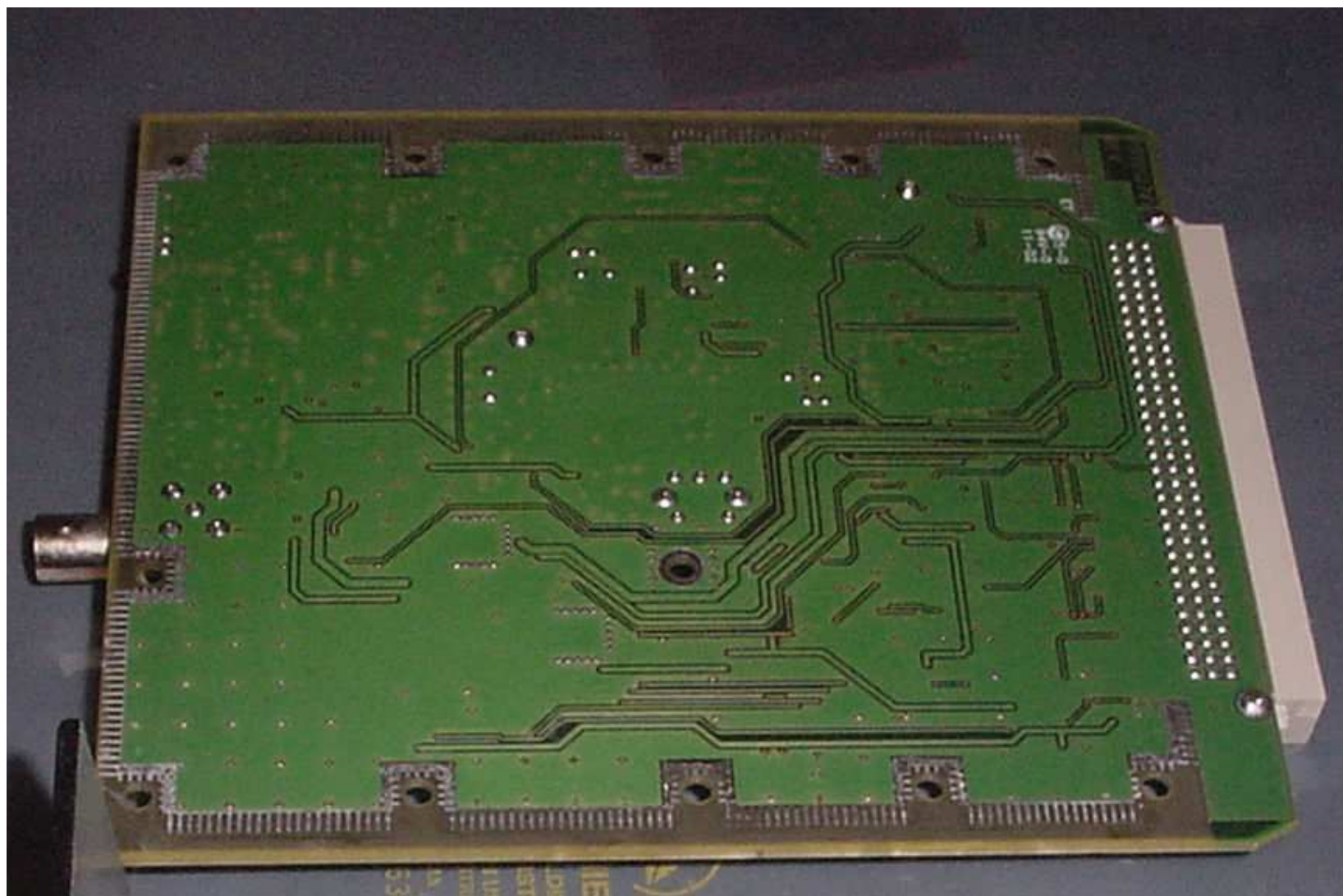


Figure 3 - Rx IF board bottom

Figure 1 Rx Front End module (top with cover)

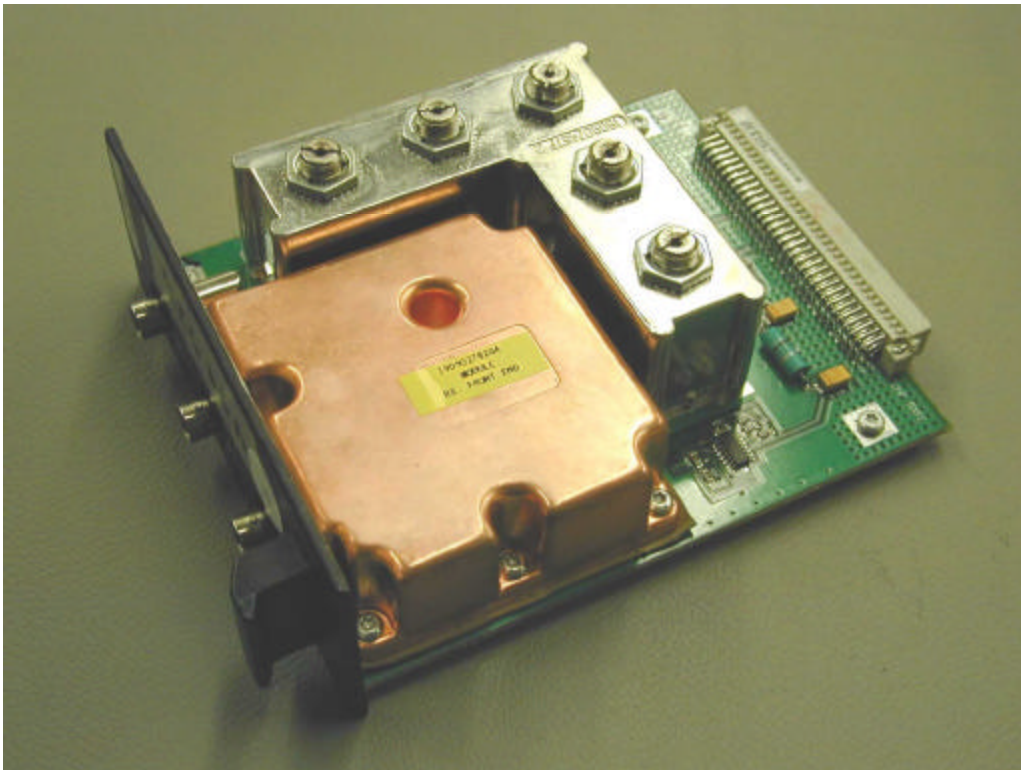


Figure 2 Rx Front End module (top without cover)

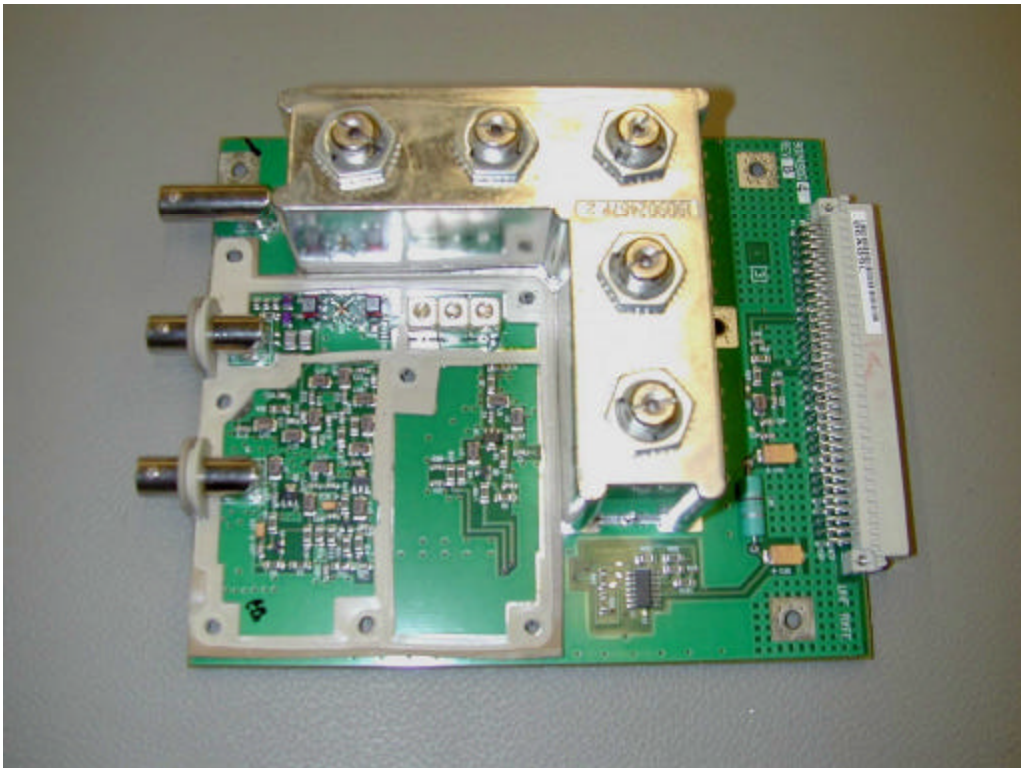


Figure 3 Rx Front End module (bottom with cover)

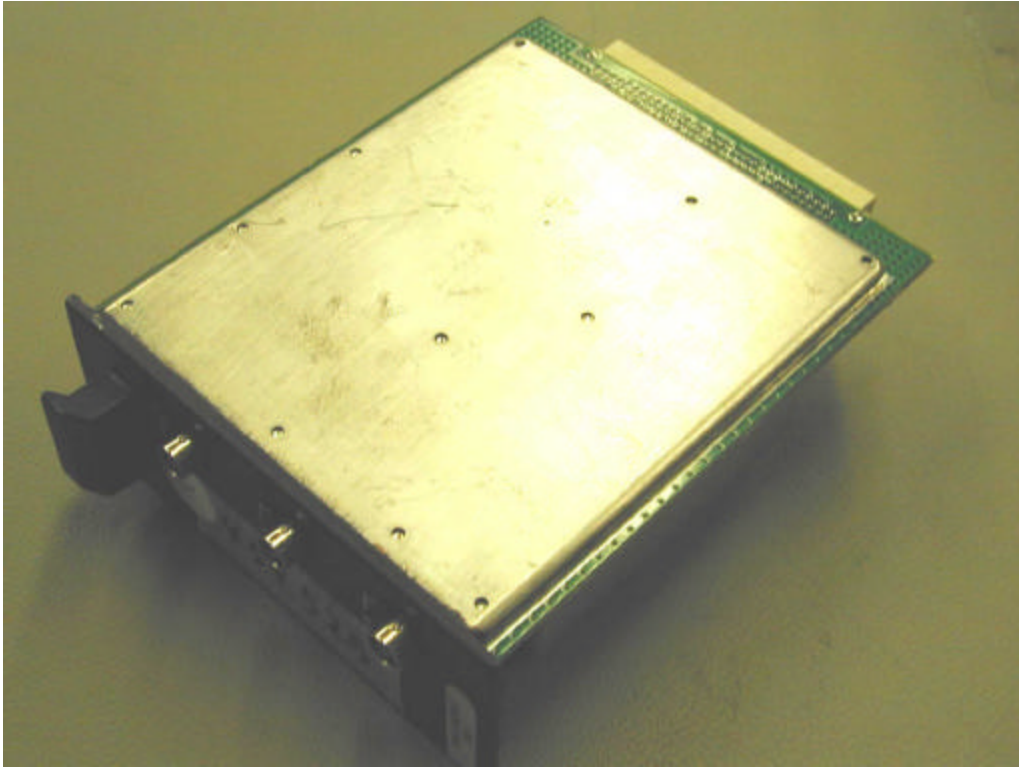
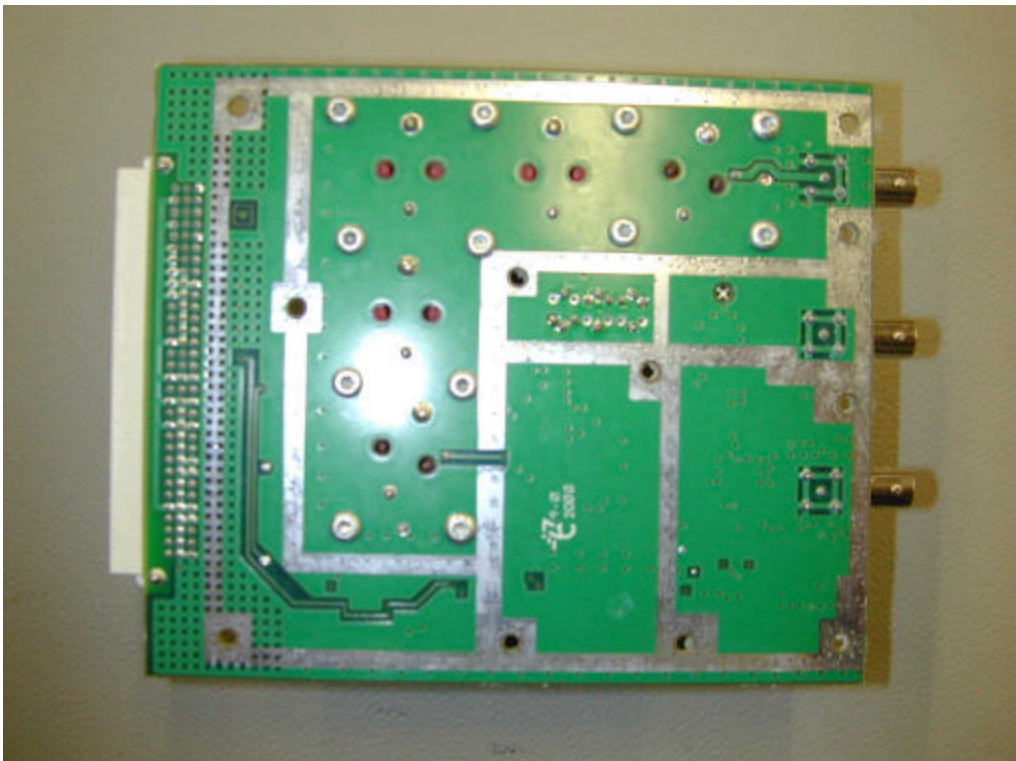
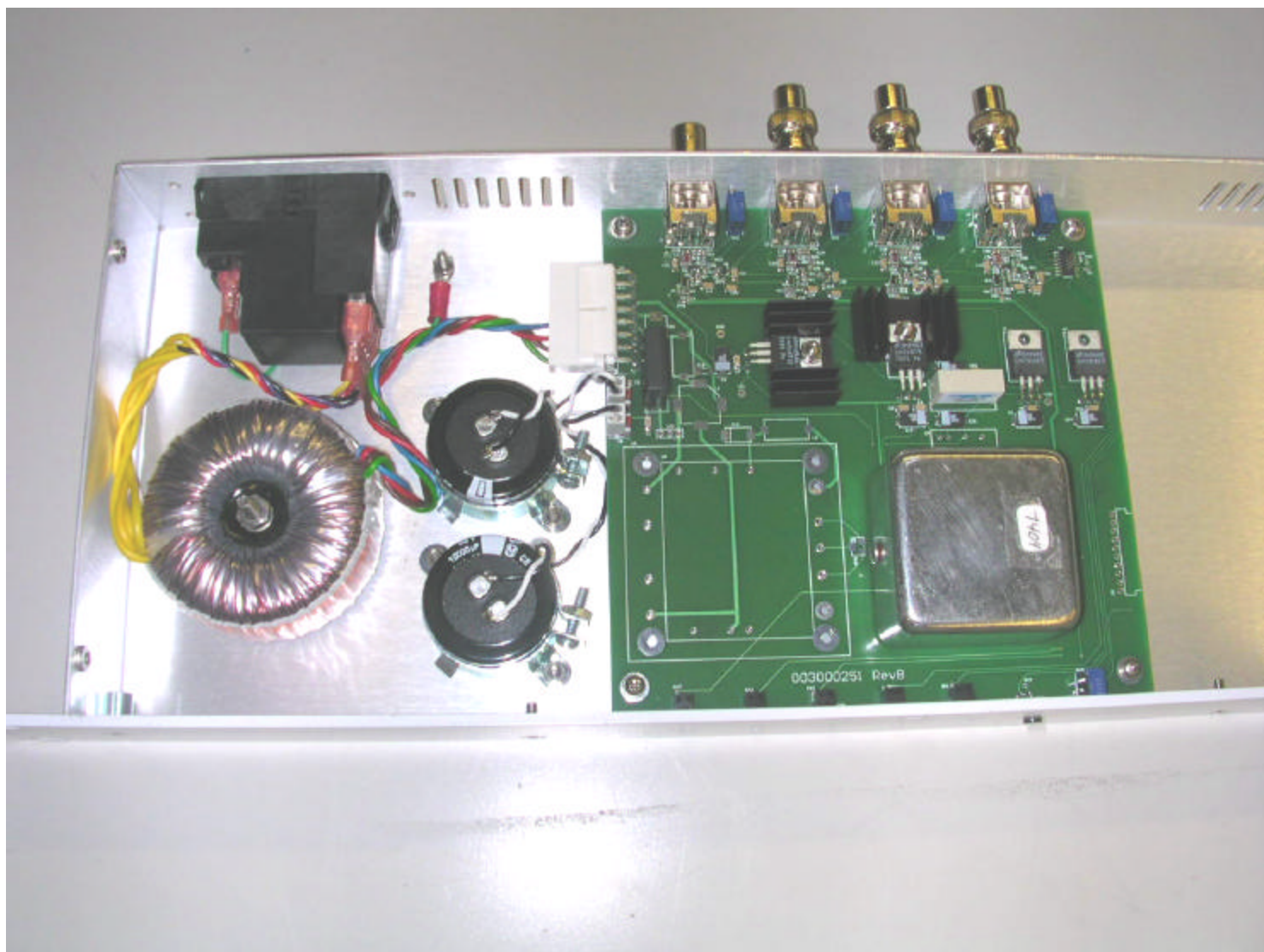
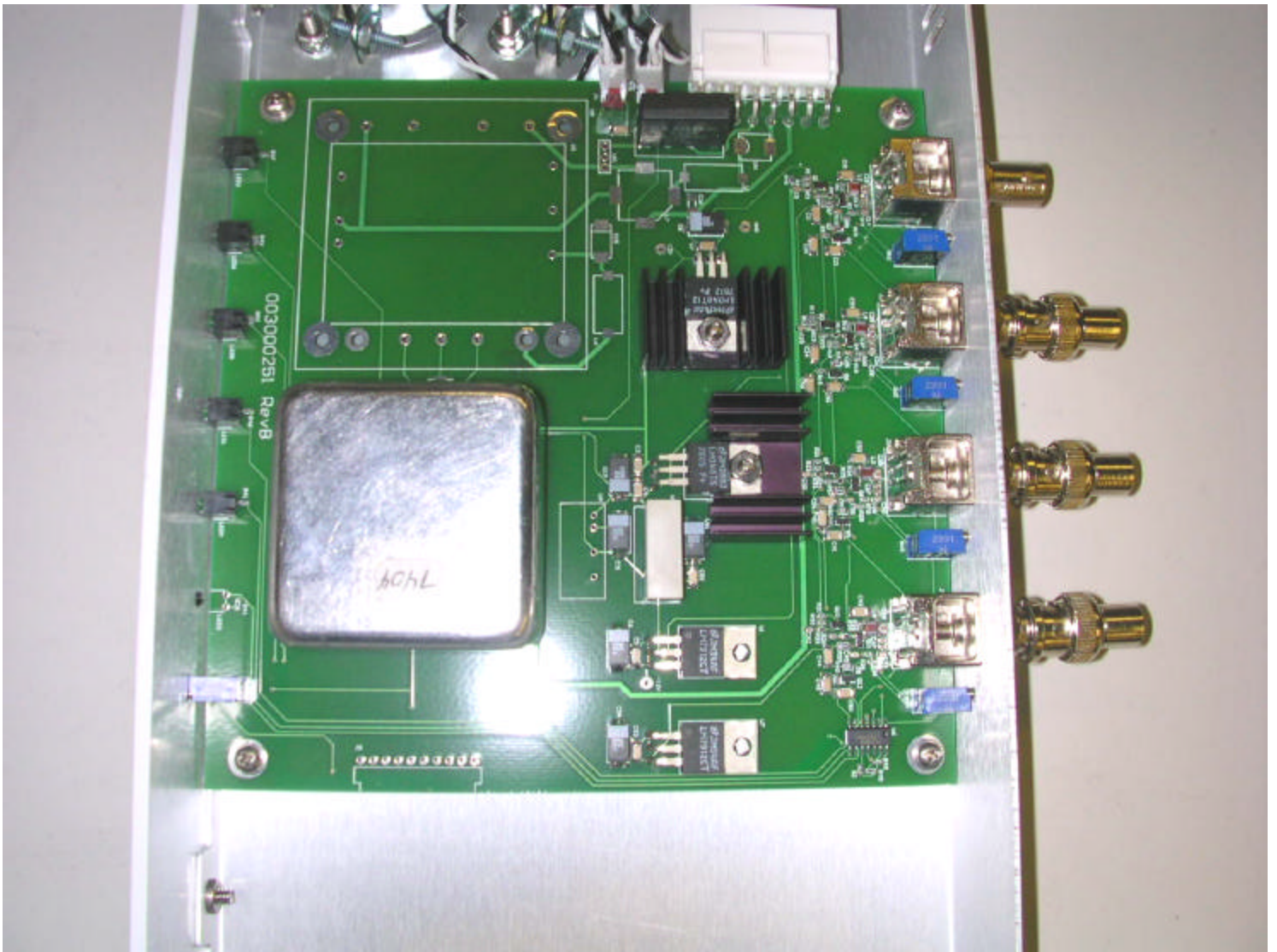


Figure 4 Rx Front End module (bottom without cover)

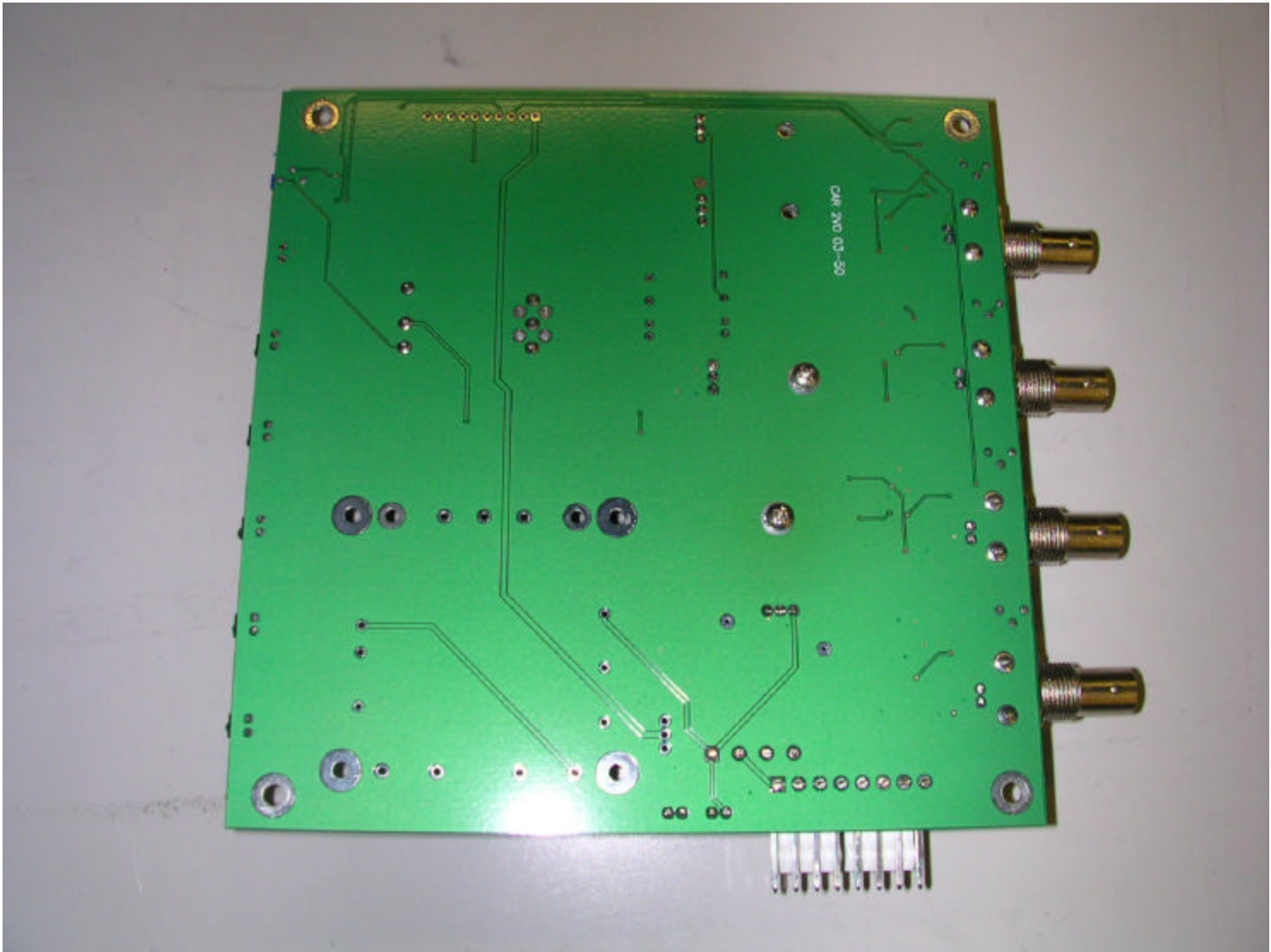




Brandywine 10 MHz frequency reference (open cover)



Brandywine 10 MHz frequency reference PCB (component side)



Brandywine 10 MHz frequency reference PCB (secondary side)