

Table of Figures

| | |
|--|----|
| Figure 1 - Backplane Top | 2 |
| Figure 2 - Backplane Board Bottom | 3 |
| Figure 3 - Interface Board Top | 4 |
| Figure 4 - Interface Board Bottom | 5 |
| Figure 5 - System Module Overall | 6 |
| Figure 6 - System Module, cover removed..... | 7 |
| Figure 7 - System Module, main board top | 8 |
| Figure 8 - System Module, main board bottom | 9 |
| Figure 9 - System Module - DSP Board top | 10 |
| Figure 10 - System Module - DSP Board bottom | 11 |
| Figure 11 - DSP Module overall | 12 |
| Figure 12 - DSP Module board top..... | 13 |
| Figure 13 - DSP Module board bottom..... | 14 |
| Figure 15 - Power Module Board Top | 16 |
| Figure 16 - Power Module Board Bottom | 17 |

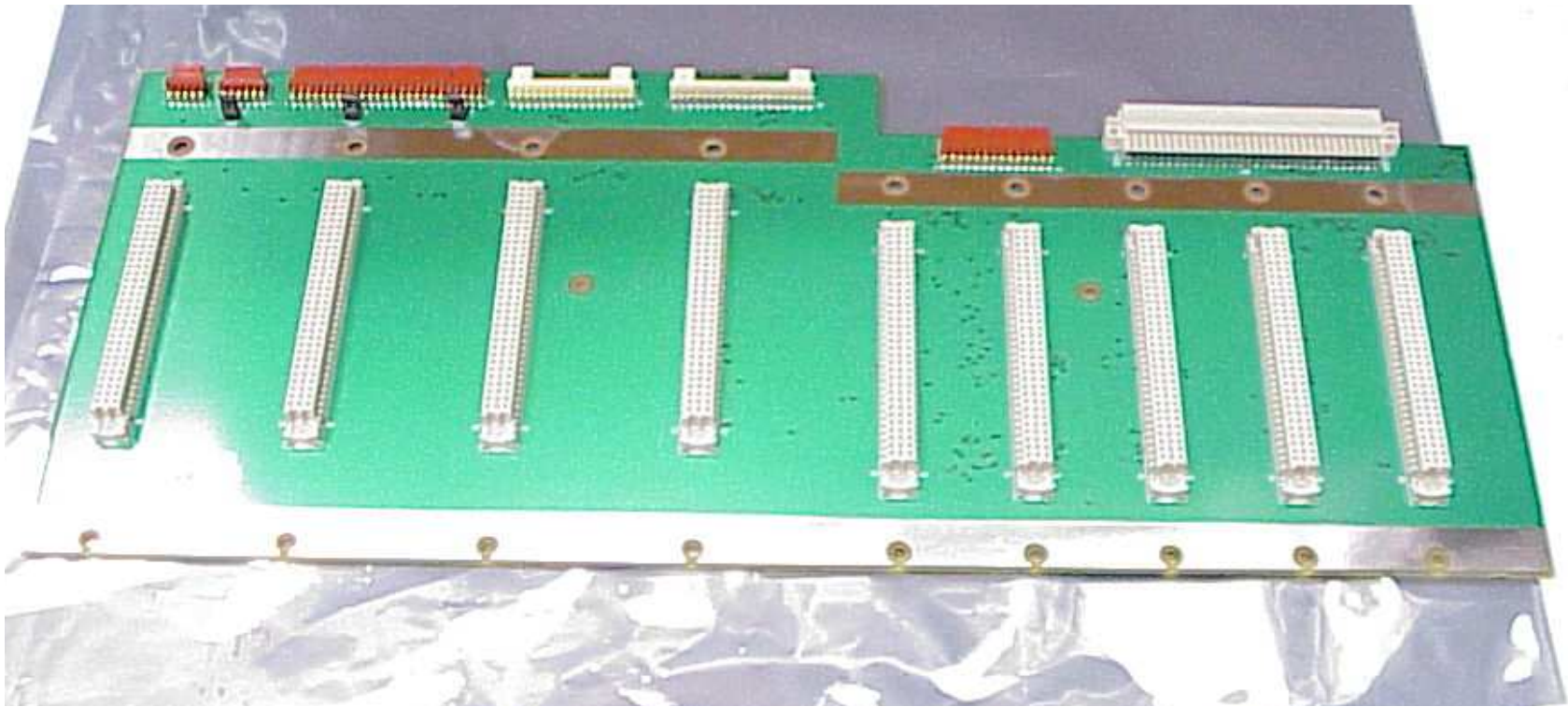


Figure 1 - Backplane Top

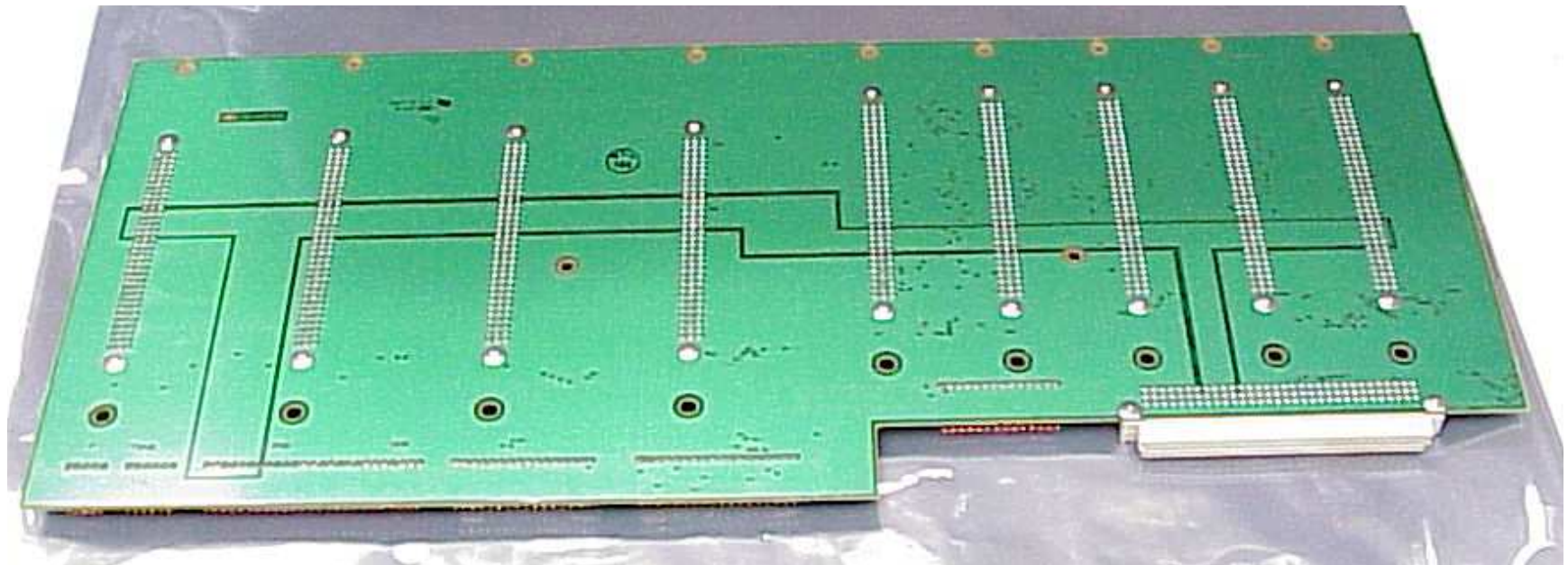


Figure 2 - Backplane Board Bottom

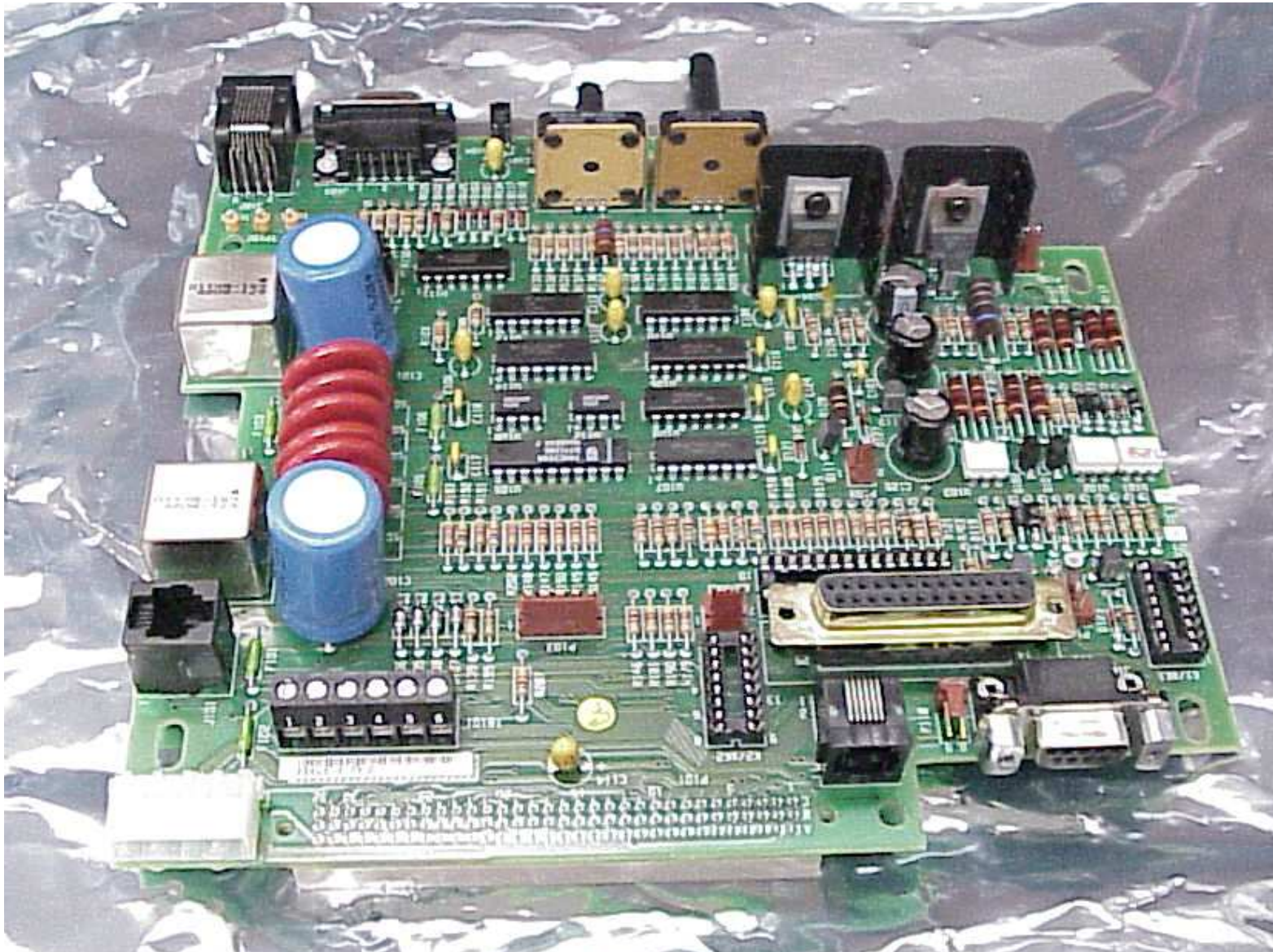


Figure 3 - Interface Board Top



Figure 4 - Interface Board Bottom



Figure 5 - System Module Overall



Figure 6 - System Module, cover removed



Figure 7 - System Module, main board top



Figure 8 - System Module, main board bottom



Figure 9 - System Module - DSP Board top

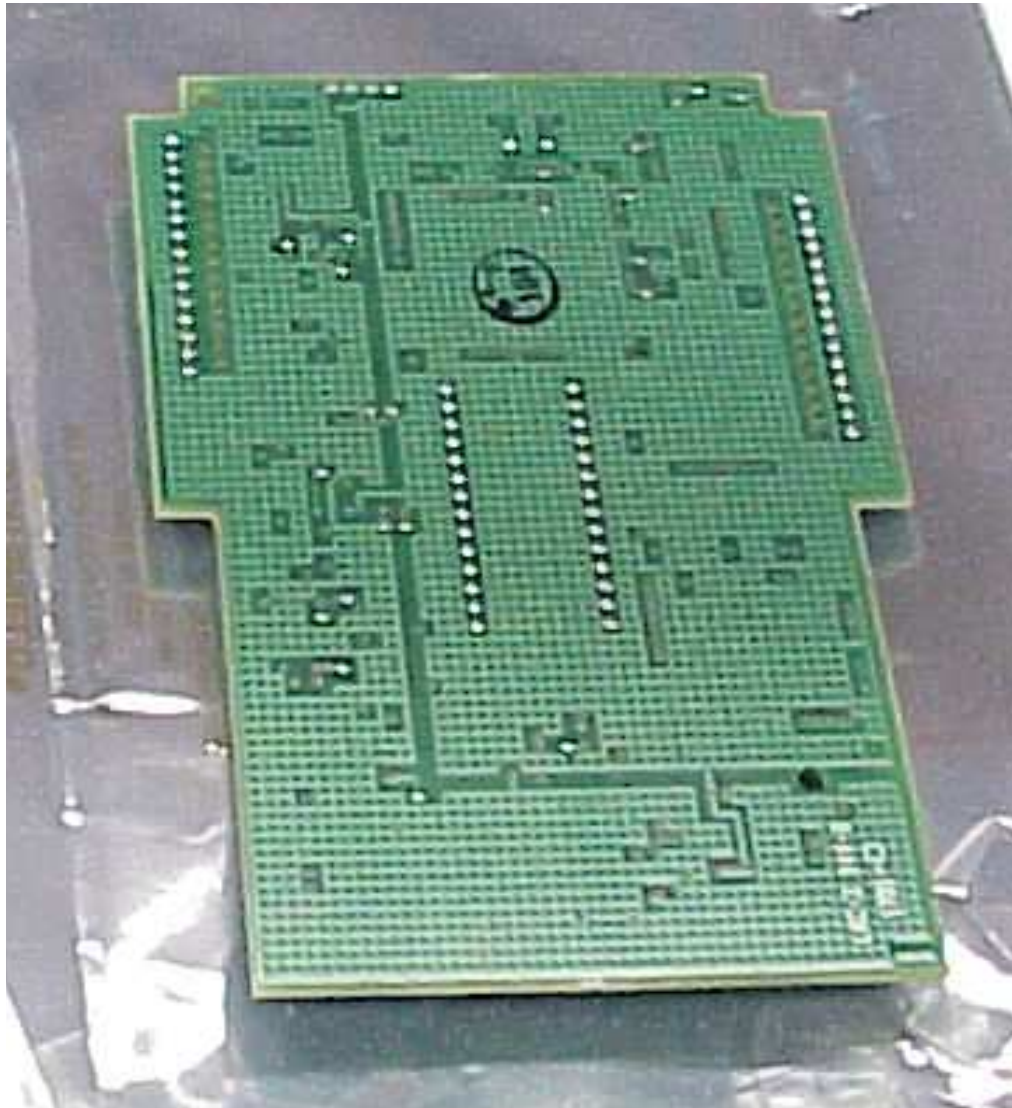


Figure 10 - System Module - DSP Board bottom



Figure 11 a). DSP module front

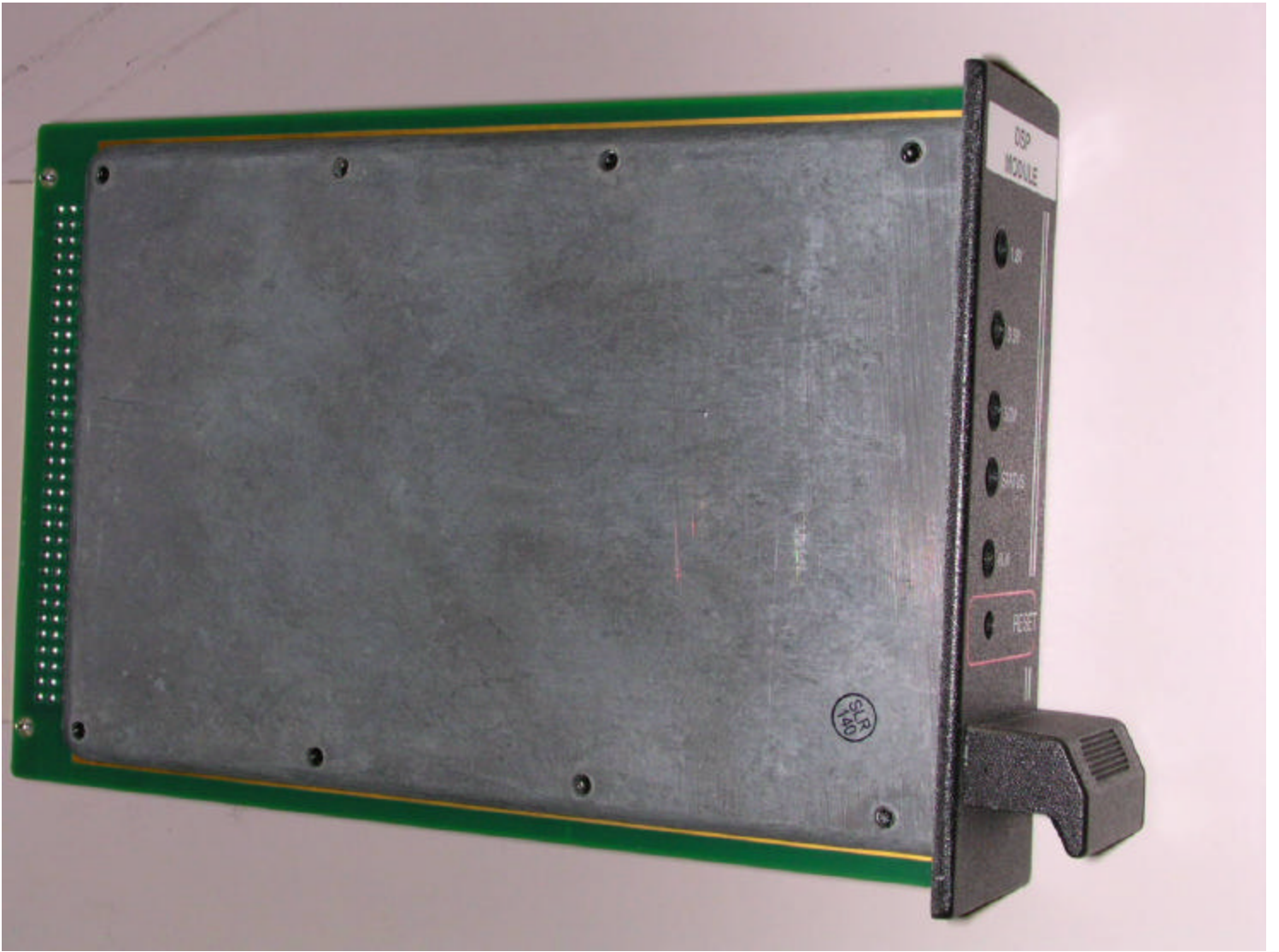


Figure 11 b) DSP module back

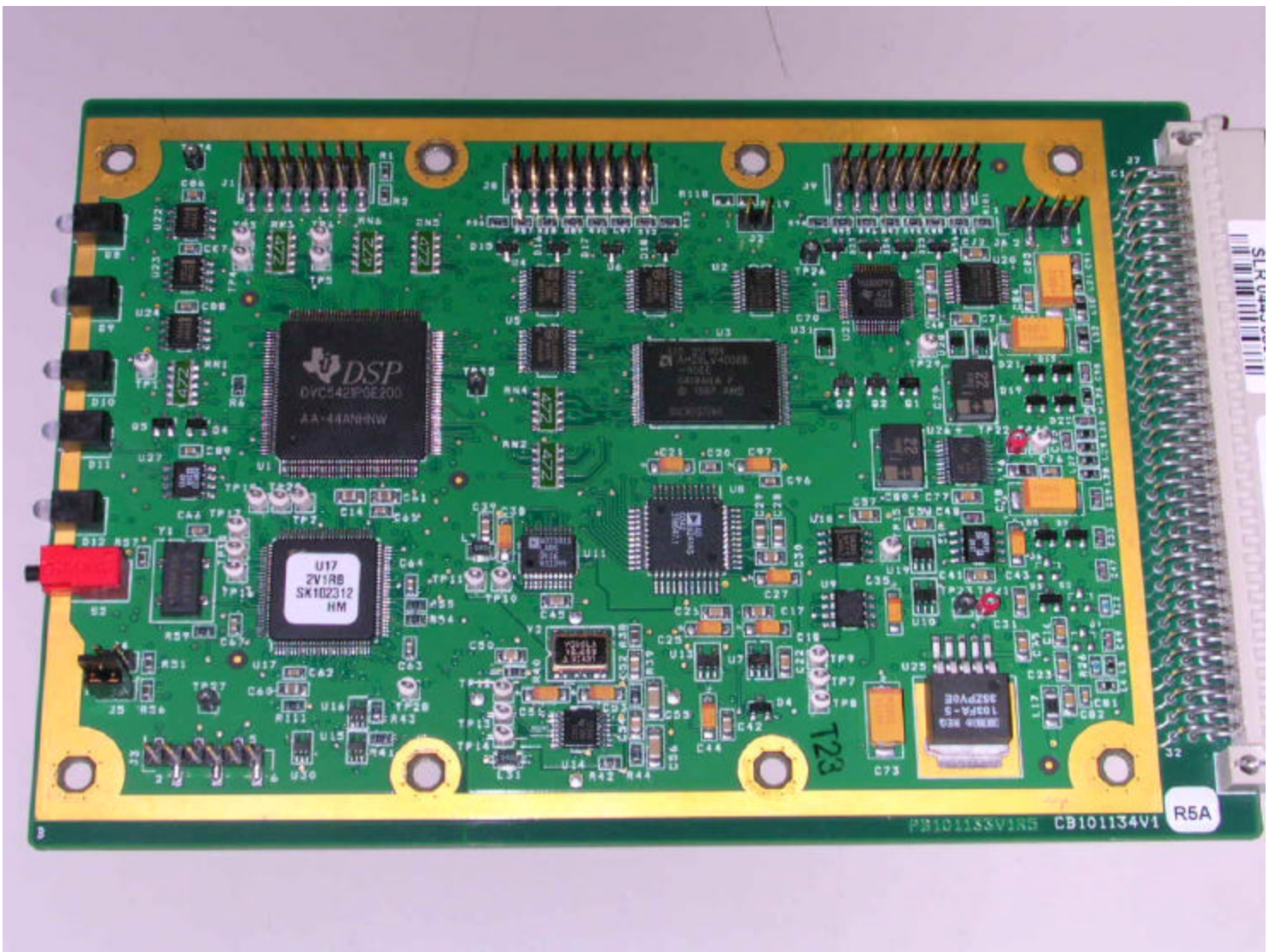


Figure 12. DSP module (component side)

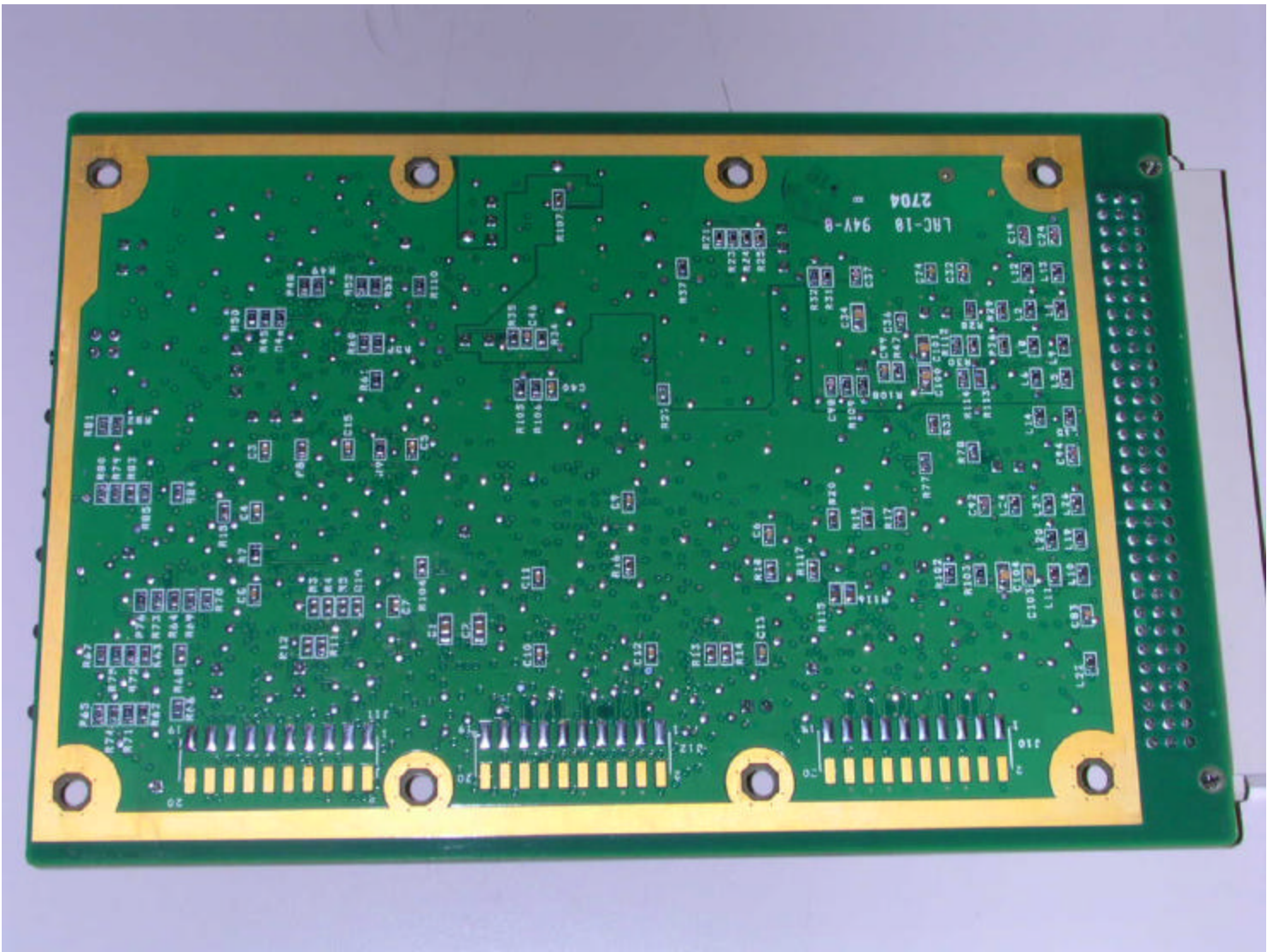


Figure 13. DSP module (secondary side)

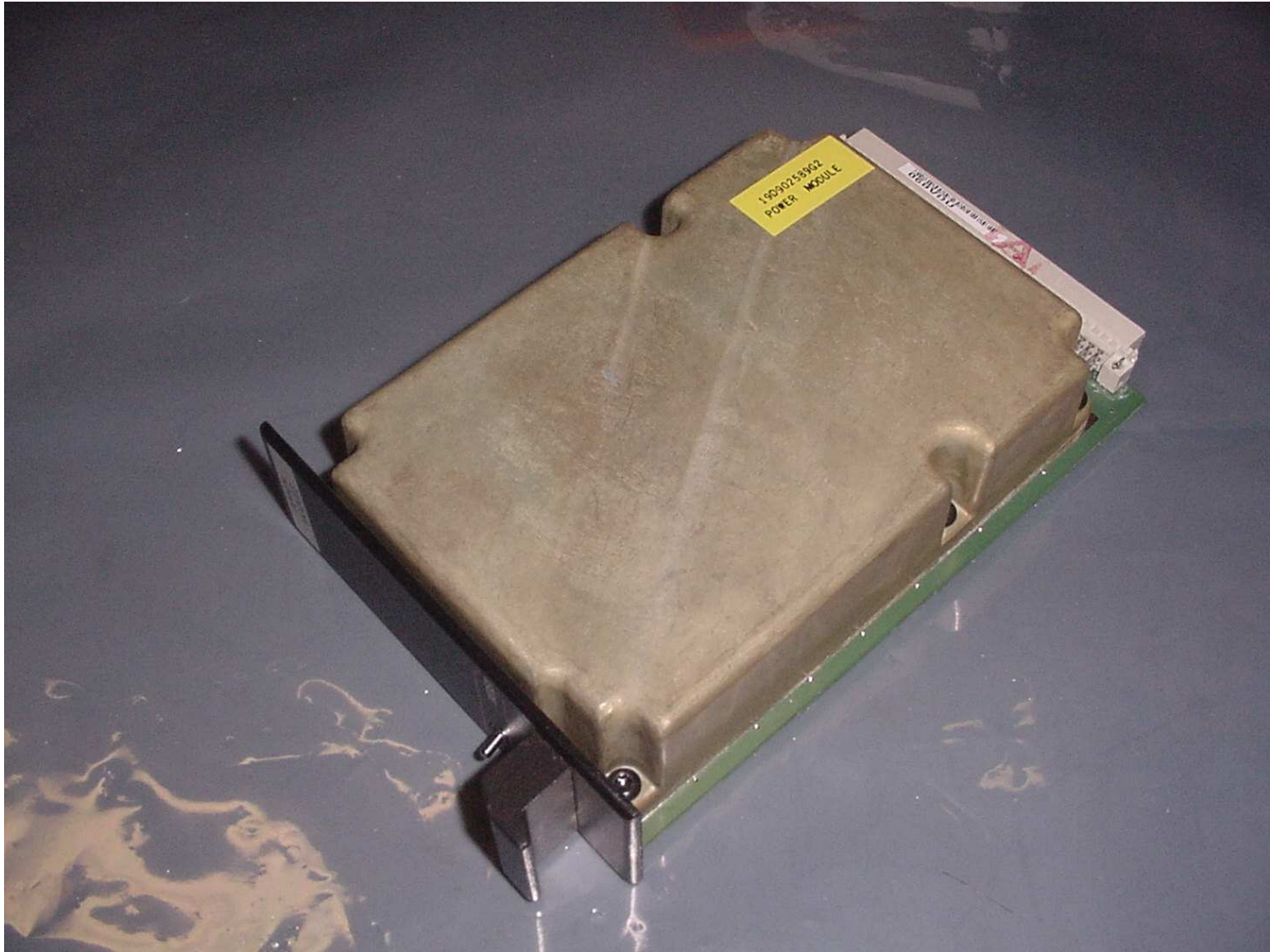


Figure 14 - Power Module Overall



Figure 15 - Power Module Board Top

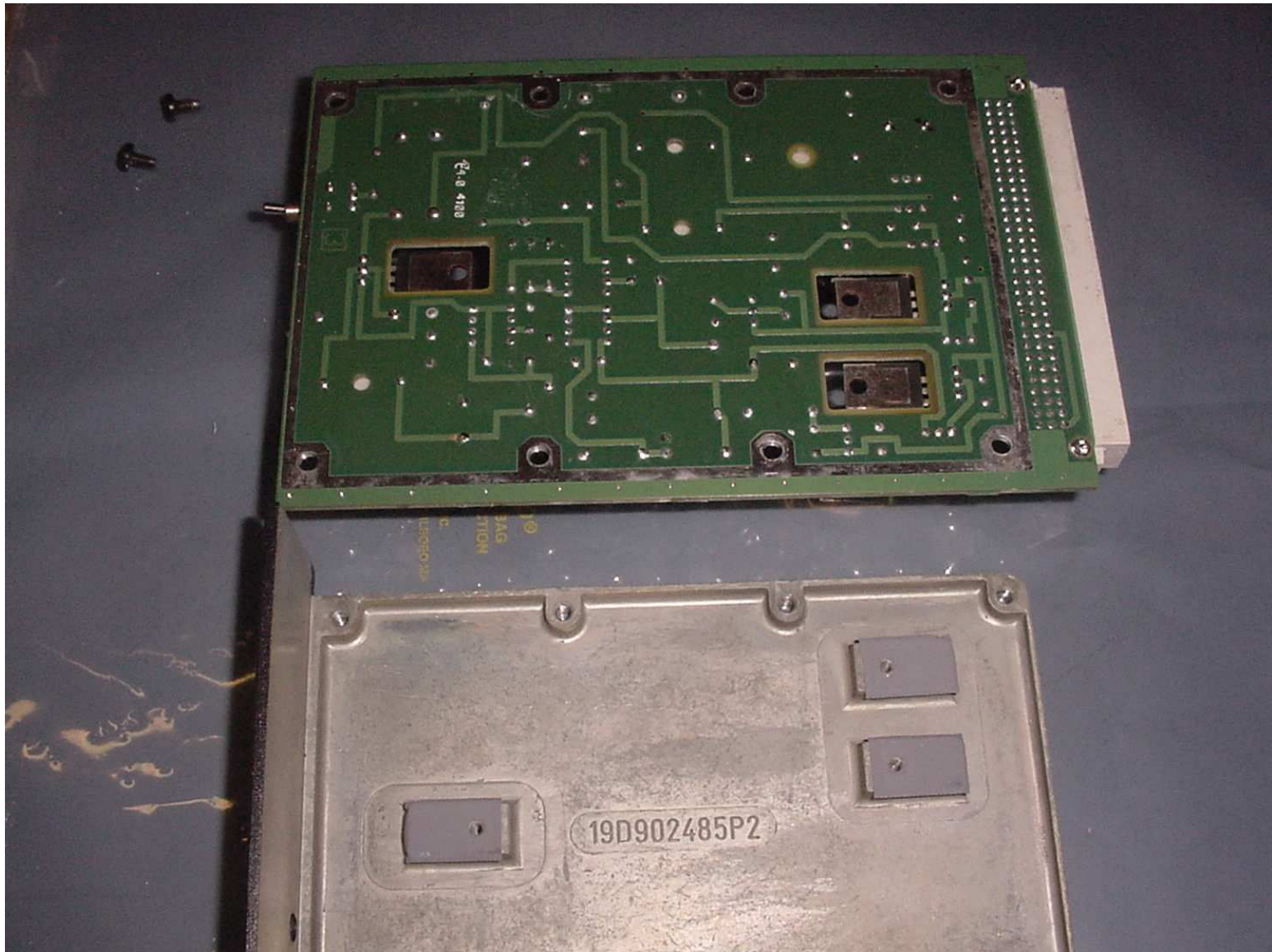


Figure 16 - Power Module Board Bottom