

# **Wireless Bluetooth Keyboard User's Guide**

---

Thanks for purchasing this Bluetooth Keyboard, it's with standard 78 keys as well as 13 function keys. This creative and easy-to-use Bluetooth Keyboard will bring you a whole new wireless life experience.

## **System Requirement**

- \* iPad, Mac OS.
- \* Windows OS( Windows XP, Windows Vista, Win 7 ).

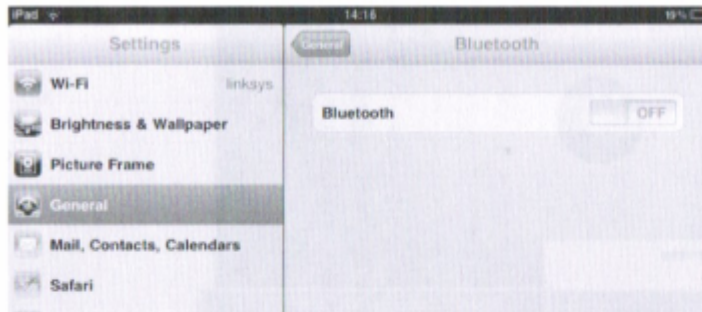
## **Main Features**

- \* Bluetooth Version: Bluetooth V 2.0, in BROADCOM 2042 chipset
- \* 78keys design, with 13 multi-function keys
- \* Scissor-switch keypad design, comfortable and ergonomic design
- \* Built-in intelligent power manage software for power conservation
- \* Built-in software solutions with Bluetooth human interface device and comply with the standard version of the Bluetooth SIG Bluetooth 2.0
- \* Power by 2pcs AAA battery
- \* Working range: 10m

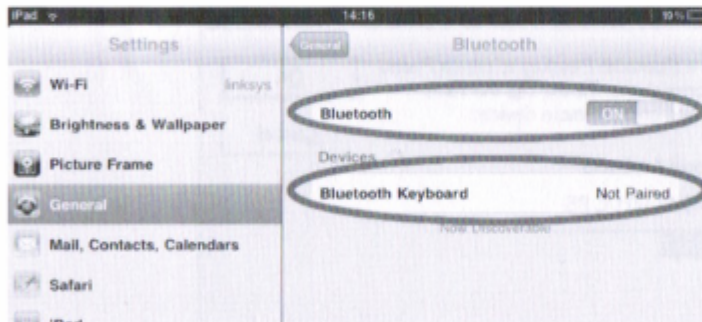
## InstallationGuide

### Connect with iPad

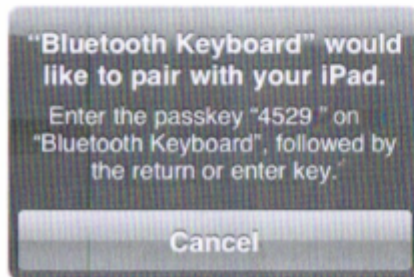
1. Open the battery cabinet, inset two AAAalkaline batteries.
2. Turn the keyboard ON, and press the pairing button. The blue light is flashing, now the keyboard is in pairing mode.
3. On your iPad, go to "settings". Then from the "settings" screen select "General".



4. Turn "Bluetooth" on, it will start searching bluetooth devices.
5. Once your device finds the keyboard, select "Bluetooth Keyboard" from the list.






6. Your device will now give you a 6 digit passkey. Enter this key onto the keyboard, and press Enter to complete the pairing(also on the keyboard).



Now the keyboard is connect with your iPad successfully

## Multimedia Function With iPad



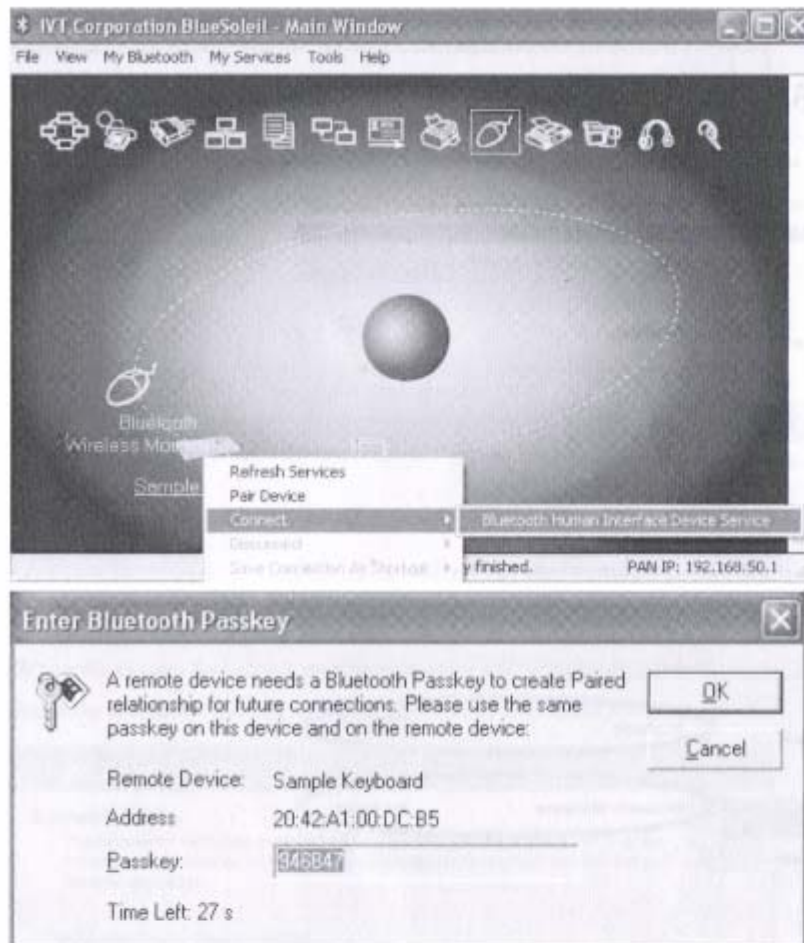
-  Home
-  F1: Spotlight search
-  F4: Picture frame mode
-  F5: Virtual keyboard
-  F7: Previous track
-  F8: Play/Pause
-  F9: Next track
-  F10: Mute
-  F11: Volume down
-  F12: Volume up
-  Del: Screen lock

### Match on IVT Software

1. Make sure that the Bluetooth function is active. Double click the Bluetooth Icon, open the Management window, select Search for Bluetooth facilities or click the Round Ball in the middle of the window.



2. Click the Bluetooth Keyboard found, click the right button for Refresh Service.
3. Select the Bluetooth Keyboard again, click the right button for Connect-Bluetooth Input Service, input the stochastic pass key, the system will auto install the HID facility. After that you can use your Bluetooth Keyboard at ease.



#### FAQ:

If unable to connect the Bluetooth Keyboard to the computer, or the Keyboard work unconventionally, please try the steps below:

1. Before you use your Bluetooth Keyboard, please make sure you have done the Bluetooth Dongle installation procedure, and the Bluetooth facility is turned on.
2. Make sure that the Computer is connected to the Bluetooth Keyboard. If they are matched to each other before, then under the Standby State, just click the "enter" key of the keyboard.
3. Make sure that the keyboard is within the effective range---10M.
4. Make sure that there's no change of the Bluetooth facility. If anything changed, please kind rematch.
5. If your Bluetooth facility is connected to other Bluetooth products, please kindly confirm that the speed of the Bluetooth facility is enough.
6. Please kindly check the batteries. If they are short of power, replace them for new ones.

#### FCC STATEMENT

1. This device complies with Part 15 of the FCC Rules. Operation is subject to the following two conditions:

(1) This device may not cause harmful interference.

(2) This device must accept any interference received, including interference that may cause undesired operation.

2. Changes or modifications not expressly approved by the party responsible for compliance could void the user's authority to operate the equipment.

NOTE: This equipment has been tested and found to comply with the limits for a Class B digital device, pursuant to Part 15 of the FCC Rules. These limits are designed to provide reasonable protection against harmful interference in a residential installation.

This equipment generates uses and can radiate radio frequency energy and, if not installed and used in accordance with the instructions, may cause harmful interference to radio communications. However, there is no guarantee that interference will not occur in a particular installation. If this equipment does cause harmful interference to radio or television reception, which can be determined by turning the equipment off and on, the user is encouraged to try to correct the interference by one or more of the following measures:

Reorient or relocate the receiving antenna.

Increase the separation between the equipment and receiver.

Connect the equipment into an outlet on a circuit different from that to which the receiver is connected.

Consult the dealer or an experienced radio/TV technician for help.

RF warning statement:

The device has been evaluated to meet general RF exposure requirement. The device can be used in portable exposure condition without restriction.