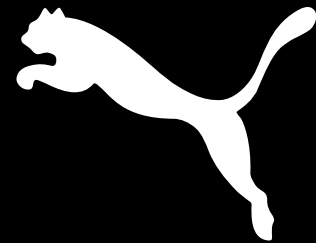


Front



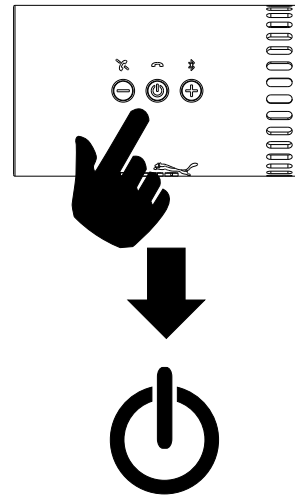
" SOUNDCHUCK "
WIRELESS SPORT SPEAKER
PMAD6050

Quick Start Guide

This will get your music playing.

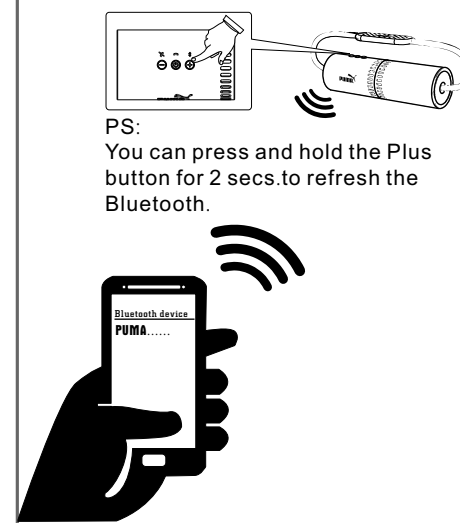
Quick Start Guide

Step 1



Press and hold the power button for 2 secs.to turn on the speaker.

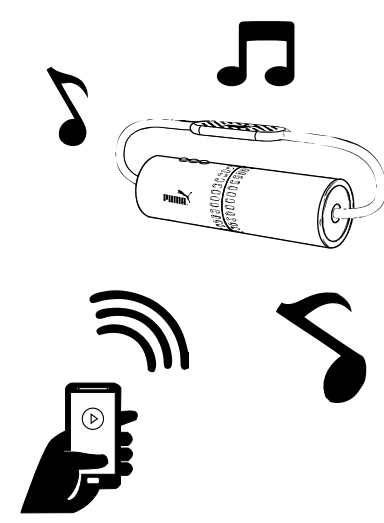
Step 2



PS:
You can press and hold the Plus button for 2 secs.to refresh the Bluetooth.

The speaker is automatically in Bluetooth search mode when it's turned on. Search the speaker's Bluetooth name "SOUNDCHUCK"by your phone,connect it .

Step 3



Play the music on your phone

Back

FCC Warning:

This equipment has been tested and found to comply with the limits for a Class B digital device, pursuant to Part 15 of the FCC Rules. These limits are designed to provide reasonable protection against harmful interference in a residential installation. This equipment generates uses and can radiate radio frequency energy and, if not installed and used in accordance with the instructions, may cause harmful interference to radio communications. However, there is no guarantee that interference will not occur in a particular installation. If this equipment does cause harmful interference to radio or television reception, which can be determined by turning the equipment off and on, the user is encouraged to try to correct the interference by one of the following measures:

- Reorient or relocate the receiving antenna.
- Increase the separation between the equipment and receiver.
- Connect the equipment into an outlet on a circuit different from that to which the receiver is connected.
- Consult the dealer or an experienced radio/TV technician for help.

This device complies with Part 15 of the FCC Rules. Operation is subject to the following two conditions: (1) This device may not cause harmful interference, and (2) this device must accept any interference received, including interference that may cause undesired operation.

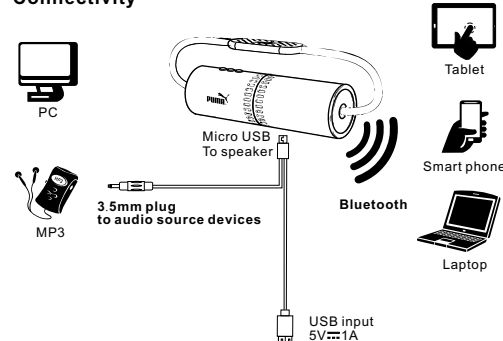
Any changes or modifications not expressly approved by the party responsible for compliance could void the user's authority to operate this equipment.

Safety

- a.CAUTION: Danger of explosion if battery is incorrectly replaced. Replace only with the same or equivalent type.
- b.A warning that batteries (battery pack or batteries installed) shall not be exposed to excessive heat such as sunshine, fire or hte like.
- c. Correct Disposal of this product. This marking indicates that this product should not be disposed with other household wastes throughout the EU. To prevent possible harm to the environment or human health from uncontrolled waste disposal, recycle it responsibly to promote the sustainable reuse of material resources. To return your used device, please use the return and collection systems or contact the retailer where the product was purchased. They can take this product for environmental safe recycling.

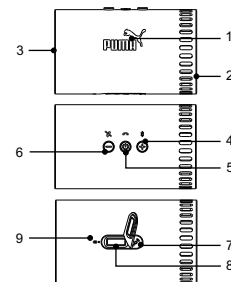
USER MANUAL

Connectivity



Operating instruction

SOUNDCHUCK



- 1: LED 1
- 2: Passive radiator
- 3: Speaker driver
- 4: Plus button
- 5: Power button
- 6: Minus button
- 7: Microphone
- 8: Micro USB jack
- 9: LED 2

- 1.LED indicator 1
 - Fast flash in blue: Bluetooth searching
 - Solid in blue: Bluetooth device connected
- 2.Passive radiator
 - Enhance the Bass
- 3.Speaker driver
4. + Button
 - Press to turn up the Volume
 - Press and hold for 2 seconds to disconnect current Bluetooth device, search for pairing
5. Ø Button
 - Press and hold for 2 seconds to turn on the speaker
 - Press and hold for 2 seconds to turn off the speaker
 - Press to answer a phone call, press again to end the call
6. - Button
 - Press to turn down the Volume
 - Press and hold for 2 seconds to reject an incoming call
- 7.Microphone
- 8.Micro USB jack: insert the 2 in 1 cable, for charging and Audio input
- 9.LED indicator 2
 - Slow flash in red: SOUNDCHUCK in charging
 - Solid in red: battery is fully charged

Connect to your Bluetooth devices

- 1)Make sure your mobile phone or other Bluetooth device support Bluetooth 3.0, 2.1 or 2.0 (A2DP)
- 2)Make sure the distance between mobile phone and speaker is within 5m (the oretical value: 10m)
- 3)Press and hold the Ø button for 2 seconds for turning on SOUNDCHUCK speaker, LED indicator is fast flashing in blue.
- 4)Use your Bluetooth device (like mobile phone, tablet PC) searching speaker "SOUNDCHUCK". (The speaker is available for pairing at any time after power on)Connect to "SOUNDCHUCK", you'll hear a prompt tone from speaker, or you can see "Paired successfully" message on your mobile, the source switches to Bluetooth source automatically.
- 5)Play music in your Bluetooth device (like mobile phone, tablet PC), and enjoy the music.

★ If one device is paired with SOUNDCHUCK already, and when another device needs to pair, Press and hold + button for 2 seconds on speaker to cancel the first pairing, and to search all available Bluetooth device. After press and hold + button turns fast flashing in blue, it's under searching and re-pairing status. (SOUNDCHUCK will automatically connect to the device, which used to connect with SOUNDCHUCK.)

Connect by 2 in 1 Cable

- 1)Insert the 2 in1 cable's Micro USB side to the speaker's Micro USB jack, and the 3.5mm plug into your device.
- 2)Play music on your device

★ While SOUNDCHUCK is connected by cable, the Bluetooth mode will stop automatically. And you can only control Volume through your device. Once you pull out the cable from SOUNDCHUCK, it will switch back to Bluetooth mode.

Answer incoming call through SOUNDCHUCK

- 1)When there is an incoming call, you can press shortly the Ø button to pick up the call.
- 2)You can hang up by pressing shortly the Ø button when you finished the call.
- 3)If you want to reject the incoming call, press and hold the - button.

Troubleshooting

- 1)Please ensure your music source device support Bluetooth 3.0, 2.0 or 2.1 (A2DP protocol), otherwise, the speaker can't support pairing
- 2)As per Bluetooth protocol, Bluetooth devices only support one to one paring, please make sure no other device is connected to your speaker, you have to disconnect it or press and hold + button for 2 seconds before using other device to search the SOUNDCHUCK;
- 3)Please make sure the distance between the Bluetooth device and the speaker is not over 5m. Normally, the Bluetooth only supports maximum 10m wireless connections; If the Bluetooth reception is poor, please remove any obstacle front of the speaker or move the Bluetooth device closer to the speaker.
- 4)For some Bluetooth devices, the Bluetooth connection may be deactivated automatically as a power-saving feature if power is low, please make sure your device with enough power.
- 5)The Bluetooth connection will be interrupted by other wireless signal,such as Wi-Fi router or 2.4G wireless phones. Pls. make sure not too many wireless devices close to your speaker and mobile phone.

