

14119592



190 200 210 220 230 240 250 260 270 280 290 300

mm  
10 20 30 40 50 60 70 80 90 100 110 120 130  
0.5mm

14119592



288 491  
EAX66251604\_B\_H443\_MAIN(2)  
REV. 0020 27  
0000 0000

mm  
10 20 30 40 50 60 70 80 90 100 110 120 130  
0.5mm

170 180 190 200 210 220 230 240 250 260 270 280 290

14119592



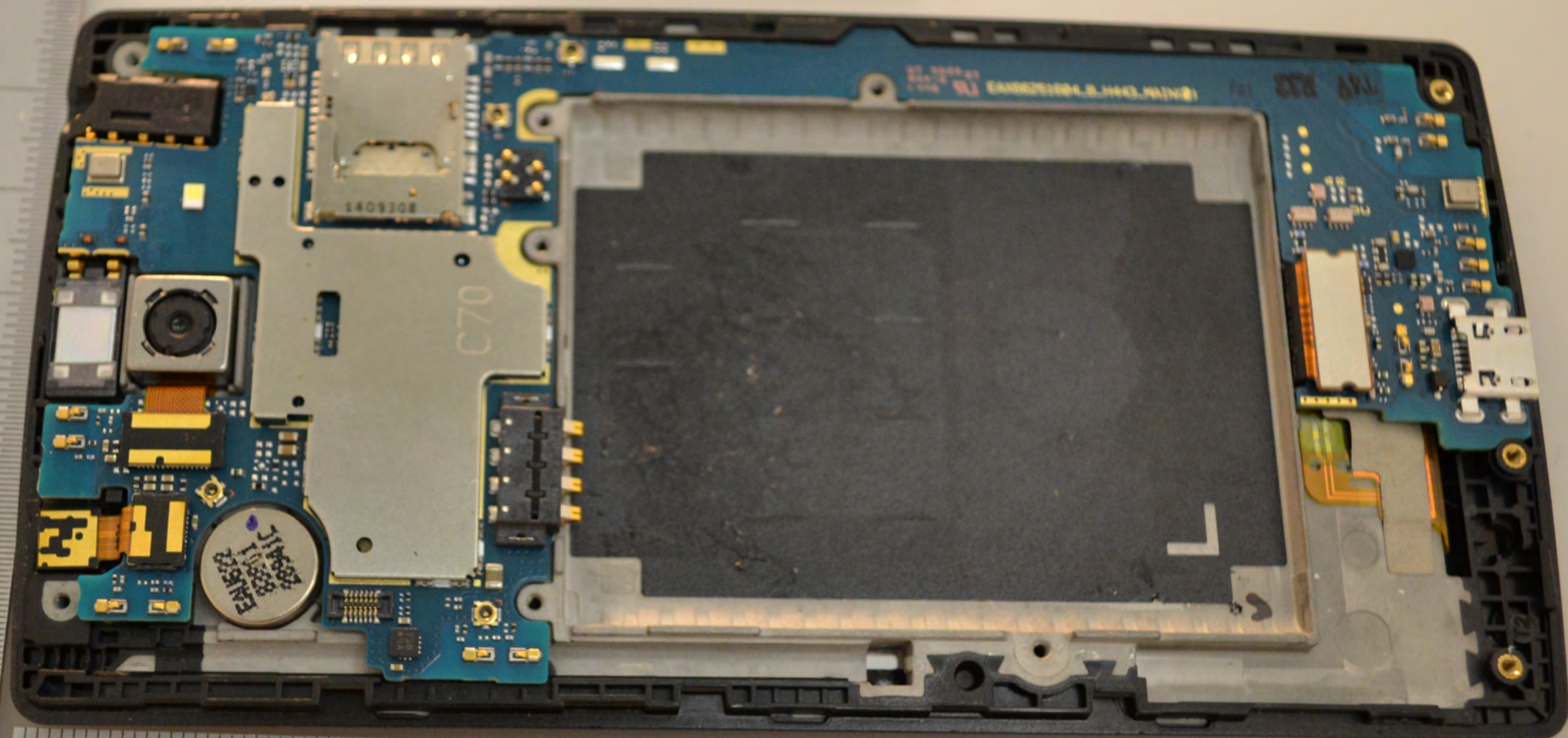
14119592



170 180 190 200 210 220 230 240 250 260 270 280 290 300

mm  
10 20 30 40 50 60 70 80 90 100 110 120 130  
0.5mm

14119592



mm

10

20

30

40

50

60

70

80

90

100

110

120

130

140

0.5mm