

SAR Plots

- Verification Plots
- SAR Test Plots

DIGITAL EMC CO., LTD

DUT: Dipole 835 MHz; Type: D835V2; Serial: D835V2 - SN:4d159

Communication System: CW; Frequency: 835 MHz; Duty Cycle: 1:1
Medium parameters used: $f = 835$ MHz; $\sigma = 0.92$ S/m; $\epsilon_r = 40.987$; $\rho = 1000$ kg/m³
Phantom section: Flat Section

DASY5 Configuration:

Probe: EX3DV4 - SN3933; ConvF(10.06, 10.06, 10.06); Calibrated: 9/24/2013; ; Electronics: DAE4 Sn1396
Phantom: SAM with CRP_2013_10_08_middle; Type: QD000P40CD; Serial: TP:1786
Measurement SW: DASY52, Version 52.8 (7); SEMCAD X Version 14.6.10 (7164)

Test Date: 2014-02-24; Ambient Temp: 20.7; Tissue Temp: 21.4

835 MHz System Verification

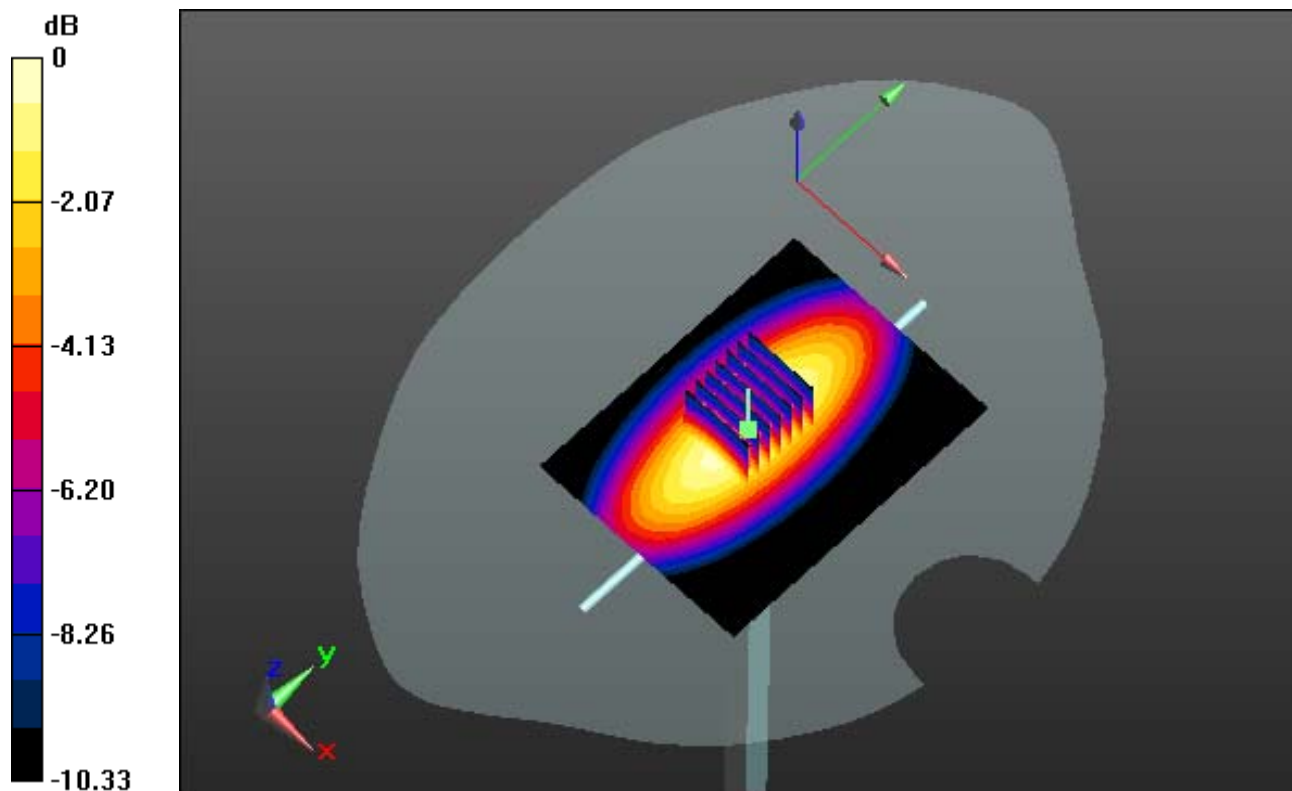
Area Scan (61x81x1): Interpolated grid: dx=15mm, dy=15mm

Zoom Scan (7x7x7)/Cube 0: Measurement grid: dx=5mm, dy=5mm, dz=5mm

Power Drift = -0.03 dB

Peak SAR (extrapolated) = 3.30 W/kg

SAR(1 g) = 2.26 W/kg; SAR(10 g) = 1.51 W/kg



0 dB = 2.64 W/kg

DIGITAL EMC CO., LTD

DUT: Dipole 835 MHz; Type: D835V2; Serial: D835V2 - SN:4d159

Communication System: CW; Frequency: 835 MHz; Duty Cycle: 1:1
Medium parameters used: $f = 835$ MHz; $\sigma = 0.92$ S/m; $\epsilon_r = 40.987$; $\rho = 1000$ kg/m³
Phantom section: Flat Section

DASY5 Configuration:

Probe: EX3DV4 - SN3933; ConvF(10.06, 10.06, 10.06); Calibrated: 9/24/2013; ; Electronics: DAE4 Sn1396
Phantom: SAM with CRP_2013_10_08_middle; Type: QD000P40CD; Serial: TP:1786
Measurement SW: DASY52, Version 52.8 (7); SEMCAD X Version 14.6.10 (7164)

Test Date: 2014-02-24; Ambient Temp: 20.7; Tissue Temp: 21.4

835 MHz System Verification

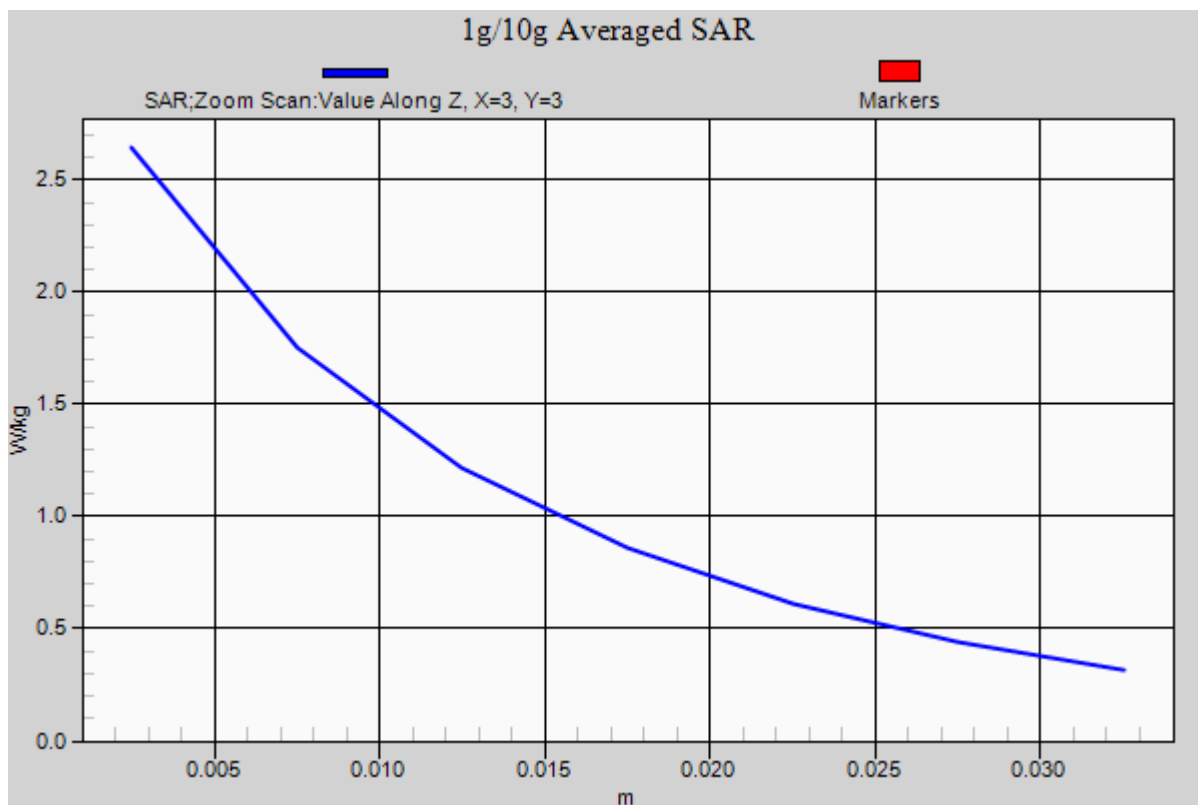
Area Scan (61x81x1): Interpolated grid: dx=15mm, dy=15mm

Zoom Scan (7x7x7)/Cube 0: Measurement grid: dx=5mm, dy=5mm, dz=5mm

Power Drift = -0.03 dB

Peak SAR (extrapolated) = 3.30 W/kg

SAR(1 g) = 2.26 W/kg; SAR(10 g) = 1.51 W/kg



DIGITAL EMC CO., LTD

DUT: Dipole 835 MHz; Type: D835V2; Serial: D835V2 - SN:4d159

Communication System: CW; Frequency: 835 MHz; Duty Cycle: 1:1
Medium parameters used: $f = 835$ MHz; $\sigma = 0.978$ S/m; $\epsilon_r = 55.354$; $\rho = 1000$ kg/m³
Phantom section: Flat Section

DASY5 Configuration:

Probe: EX3DV4 - SN3933; ConvF(9.79, 9.79, 9.79); Calibrated: 9/24/2013; ; Electronics: DAE4 Sn1396
Phantom: SAM with CRP_2013_10_08_middle; Type: QD000P40CD; Serial: TP:1786
Measurement SW: DASY52, Version 52.8 (7); SEMCAD X Version 14.6.10 (7164)

Test Date: 2014-02-25; Ambient Temp: 20.8; Tissue Temp: 21.4

835 MHz System Verification

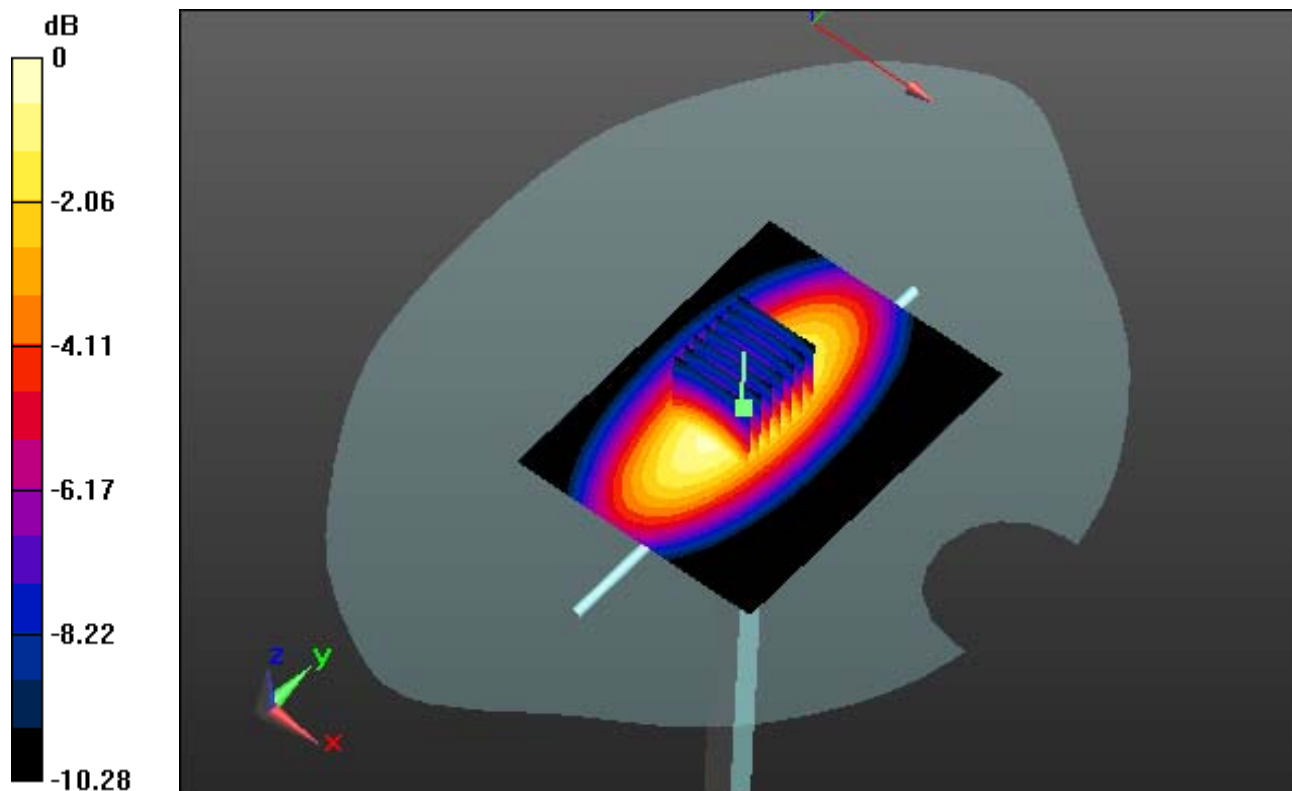
Area Scan (61x81x1): Interpolated grid: dx=15mm, dy=15mm

Zoom Scan (7x7x7)/Cube 0: Measurement grid: dx=5mm, dy=5mm, dz=5mm

Power Drift = 0.04 dB

Peak SAR (extrapolated) = 3.62 W/kg

SAR(1 g) = 2.39 W/kg; SAR(10 g) = 1.57 W/kg



0 dB = 2.92 W/kg

DIGITAL EMC CO., LTD

DUT: Dipole 835 MHz; Type: D835V2; Serial: D835V2 - SN:4d159

Communication System: CW; Frequency: 835 MHz; Duty Cycle: 1:1
Medium parameters used: $f = 835$ MHz; $\sigma = 0.978$ S/m; $\epsilon_r = 55.354$; $\rho = 1000$ kg/m³
Phantom section: Flat Section

DASY5 Configuration:

Probe: EX3DV4 - SN3933; ConvF(9.79, 9.79, 9.79); Calibrated: 9/24/2013; ; Electronics: DAE4 Sn1396
Phantom: SAM with CRP_2013_10_08_middle; Type: QD000P40CD; Serial: TP:1786
Measurement SW: DASY52, Version 52.8 (7); SEMCAD X Version 14.6.10 (7164)

Test Date: 2014-02-25; Ambient Temp: 20.8; Tissue Temp: 21.4

835 MHz System Verification

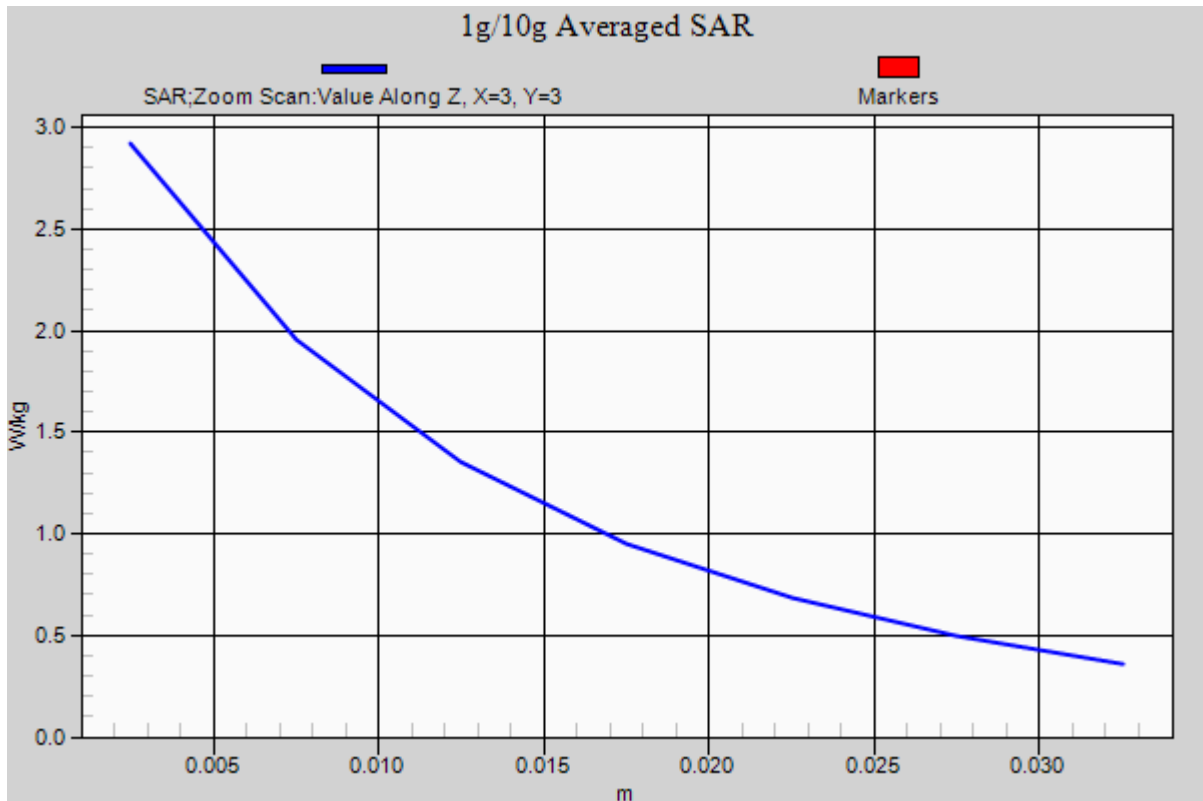
Area Scan (61x81x1): Interpolated grid: dx=15mm, dy=15mm

Zoom Scan (7x7x7)/Cube 0: Measurement grid: dx=5mm, dy=5mm, dz=5mm

Power Drift = 0.04 dB

Peak SAR (extrapolated) = 3.62 W/kg

SAR(1 g) = 2.39 W/kg; SAR(10 g) = 1.57 W/kg



DIGITAL EMC CO., LTD

DUT: Dipole 835 MHz; Type: D835V2; Serial: D835V2 - SN:4d159

Communication System: CW; Frequency: 835 MHz; Duty Cycle: 1:1
Medium parameters used: $f = 835 \text{ MHz}$; $\sigma = 0.913 \text{ S/m}$; $\epsilon_r = 40.431$; $\rho = 1000 \text{ kg/m}^3$
Phantom section: Flat Section

DASY5 Configuration:

Probe: EX3DV4 - SN3933; ConvF(10.06, 10.06, 10.06); Calibrated: 9/24/2013; ; Electronics: DAE4 Sn1396
Phantom: SAM with CRP_2013_10_08_middle; Type: QD000P40CD; Serial: TP:1786
Measurement SW: DASY52, Version 52.8 (7); SEMCAD X Version 14.6.10 (7164)

Test Date: 2014-02-28; Ambient Temp: 21.2; Tissue Temp: 21.7

835 MHz System Verification

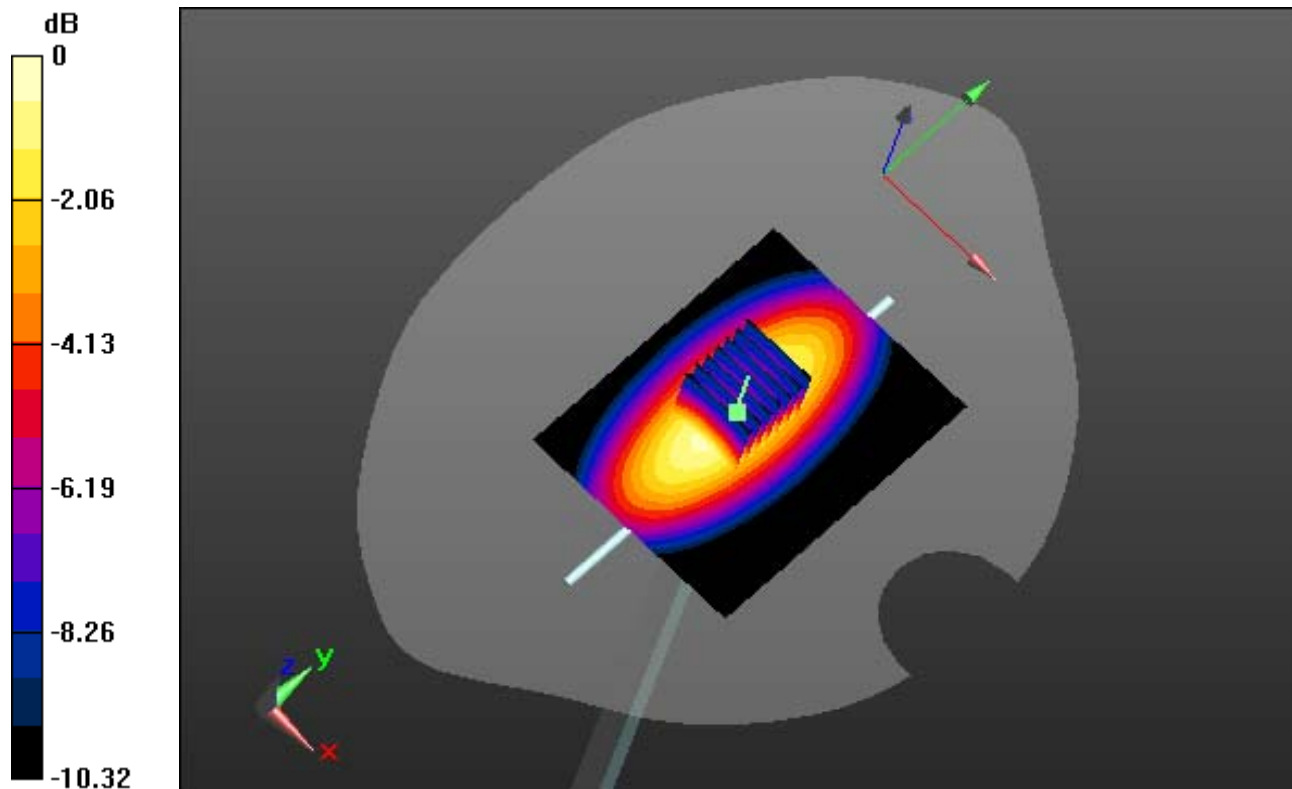
Area Scan (61x81x1): Interpolated grid: $dx=15\text{mm}$, $dy=15\text{mm}$

Zoom Scan (7x7x7)/Cube 0: Measurement grid: $dx=5\text{mm}$, $dy=5\text{mm}$, $dz=5\text{mm}$

Power Drift = 0.06 dB

Peak SAR (extrapolated) = 3.35 W/kg

SAR(1 g) = 2.29 W/kg; SAR(10 g) = 1.48 W/kg



0 dB = 2.68 W/kg

DIGITAL EMC CO., LTD

DUT: Dipole 835 MHz; Type: D835V2; Serial: D835V2 - SN:4d159

Communication System: CW; Frequency: 835 MHz; Duty Cycle: 1:1
Medium parameters used: $f = 835$ MHz; $\sigma = 0.913$ S/m; $\epsilon_r = 40.431$; $\rho = 1000$ kg/m³
Phantom section: Flat Section

DASY5 Configuration:

Probe: EX3DV4 - SN3933; ConvF(10.06, 10.06, 10.06); Calibrated: 9/24/2013; ; Electronics: DAE4 Sn1396
Phantom: SAM with CRP_2013_10_08_middle; Type: QD000P40CD; Serial: TP:1786
Measurement SW: DASY52, Version 52.8 (7); SEMCAD X Version 14.6.10 (7164)

Test Date: 2014-02-28; Ambient Temp: 21.2; Tissue Temp: 21.7

835 MHz System Verification

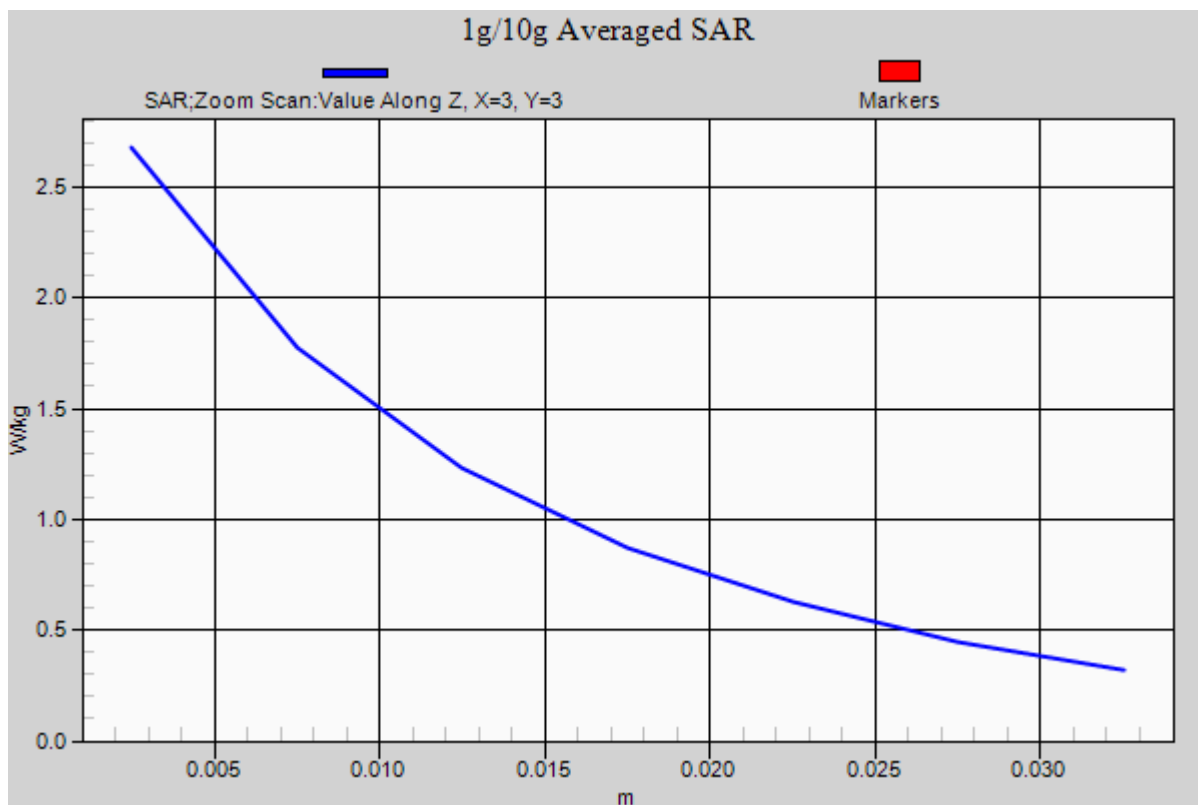
Area Scan (61x81x1): Interpolated grid: dx=15mm, dy=15mm

Zoom Scan (7x7x7)/Cube 0: Measurement grid: dx=5mm, dy=5mm, dz=5mm

Power Drift = 0.06 dB

Peak SAR (extrapolated) = 3.35 W/kg

SAR(1 g) = 2.29 W/kg; SAR(10 g) = 1.48 W/kg



DIGITAL EMC CO., LTD

DUT: Dipole 835 MHz; Type: D835V2; Serial: D835V2 - SN:4d159

Communication System: CW; Frequency: 835 MHz; Duty Cycle: 1:1
Medium parameters used: $f = 835$ MHz; $\sigma = 0.991$ S/m; $\epsilon_r = 55.852$; $\rho = 1000$ kg/m³
Phantom section: Flat Section

DASY5 Configuration:

Probe: EX3DV4 - SN3933; ConvF(9.79, 9.79, 9.79); Calibrated: 9/24/2013; ; Electronics: DAE4 Sn1396
Phantom: SAM with CRP_2013_10_08_middle; Type: QD000P40CD; Serial: TP:1786
Measurement SW: DASY52, Version 52.8 (7); SEMCAD X Version 14.6.10 (7164)

Test Date: 2014-02-28; Ambient Temp: 21.2; Tissue Temp: 21.7

835 MHz System Verification

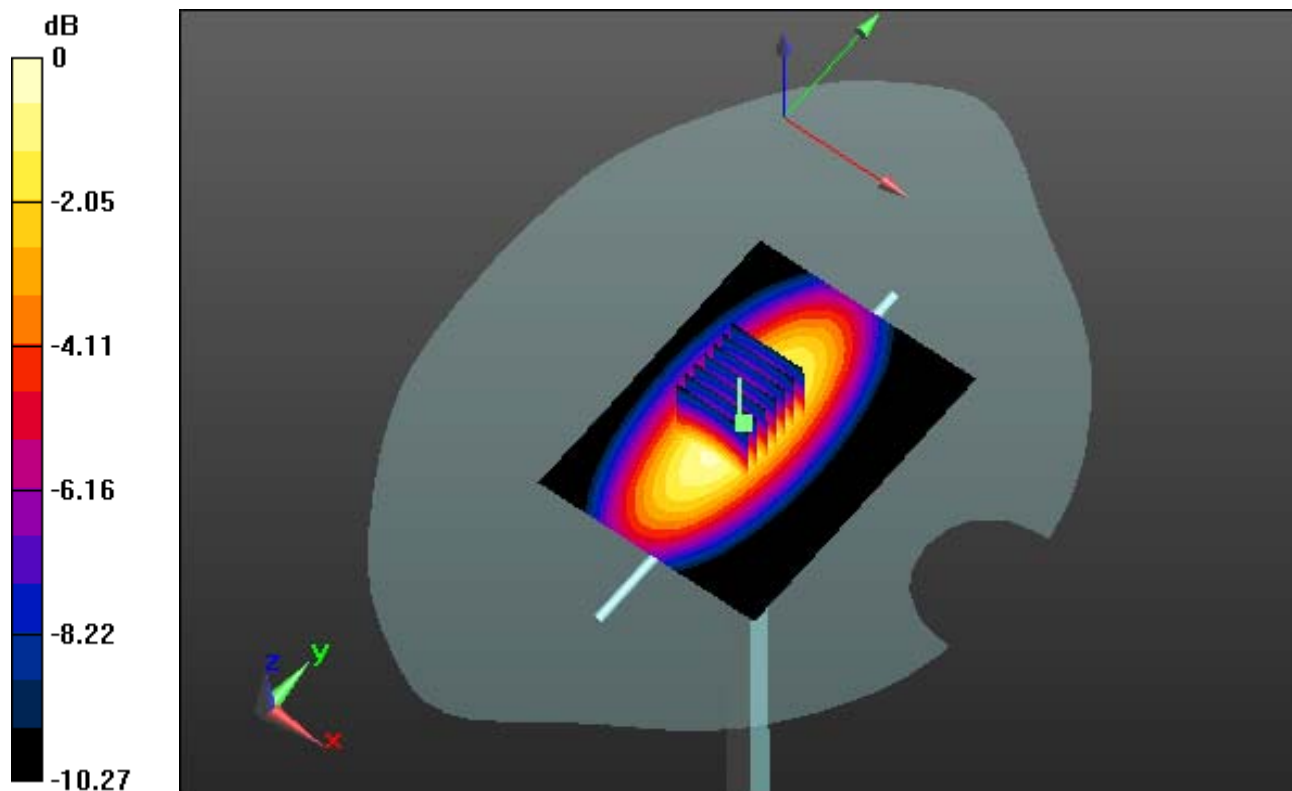
Area Scan (61x81x1): Interpolated grid: dx=15mm, dy=15mm

Zoom Scan (7x7x7)/Cube 0: Measurement grid: dx=5mm, dy=5mm, dz=5mm

Power Drift = 0.01 dB

Peak SAR (extrapolated) = 3.67 W/kg

SAR(1 g) = 2.43 W/kg; SAR(10 g) = 1.59 W/kg



0 dB = 2.96 W/kg

DIGITAL EMC CO., LTD

DUT: Dipole 835 MHz; Type: D835V2; Serial: D835V2 - SN:4d159

Communication System: CW; Frequency: 835 MHz; Duty Cycle: 1:1
Medium parameters used: $f = 835$ MHz; $\sigma = 0.991$ S/m; $\epsilon_r = 55.852$; $\rho = 1000$ kg/m³
Phantom section: Flat Section

DASY5 Configuration:

Probe: EX3DV4 - SN3933; ConvF(9.79, 9.79, 9.79); Calibrated: 9/24/2013; ; Electronics: DAE4 Sn1396
Phantom: SAM with CRP_2013_10_08_middle; Type: QD000P40CD; Serial: TP:1786
Measurement SW: DASY52, Version 52.8 (7); SEMCAD X Version 14.6.10 (7164)

Test Date: 2014-02-28; Ambient Temp: 21.2; Tissue Temp: 21.7

835 MHz System Verification

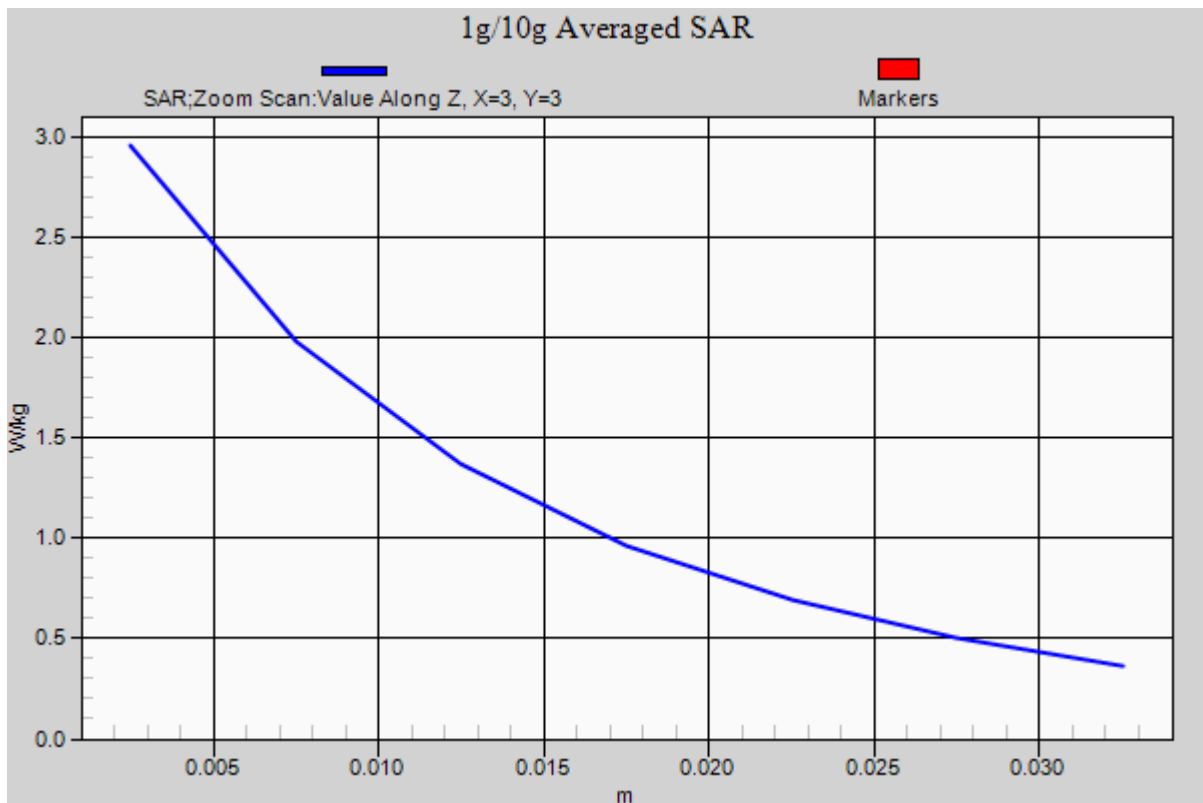
Area Scan (61x81x1): Interpolated grid: dx=15mm, dy=15mm

Zoom Scan (7x7x7)/Cube 0: Measurement grid: dx=5mm, dy=5mm, dz=5mm

Power Drift = 0.01 dB

Peak SAR (extrapolated) = 3.67 W/kg

SAR(1 g) = 2.43 W/kg; SAR(10 g) = 1.59 W/kg



DIGITAL EMC CO., LTD

DUT: Dipole 1900 MHz; Type: D1900V2; Serial: D1900V2 - SN:5d176

Communication System: CW; Frequency: 1900 MHz; Duty Cycle: 1:1
Medium parameters used: $f = 1900$ MHz; $\sigma = 1.409$ S/m; $\epsilon_r = 40.026$; $\rho = 1000$ kg/m³
Phantom section: Flat Section

DASY5 Configuration:

Probe: EX3DV4 - SN3933; ConvF(8.25, 8.25, 8.25); Calibrated: 9/24/2013; ; Electronics: DAE4 Sn1396
Phantom: SAM with CRP_2013_10_08_middle; Type: QD000P40CD; Serial: TP:1786
Measurement SW: DASY52, Version 52.8 (7); SEMCAD X Version 14.6.10 (7164)

Test Date: 2014-02-26; Ambient Temp: 21.0; Tissue Temp: 21.6

1900 MHz System Verification

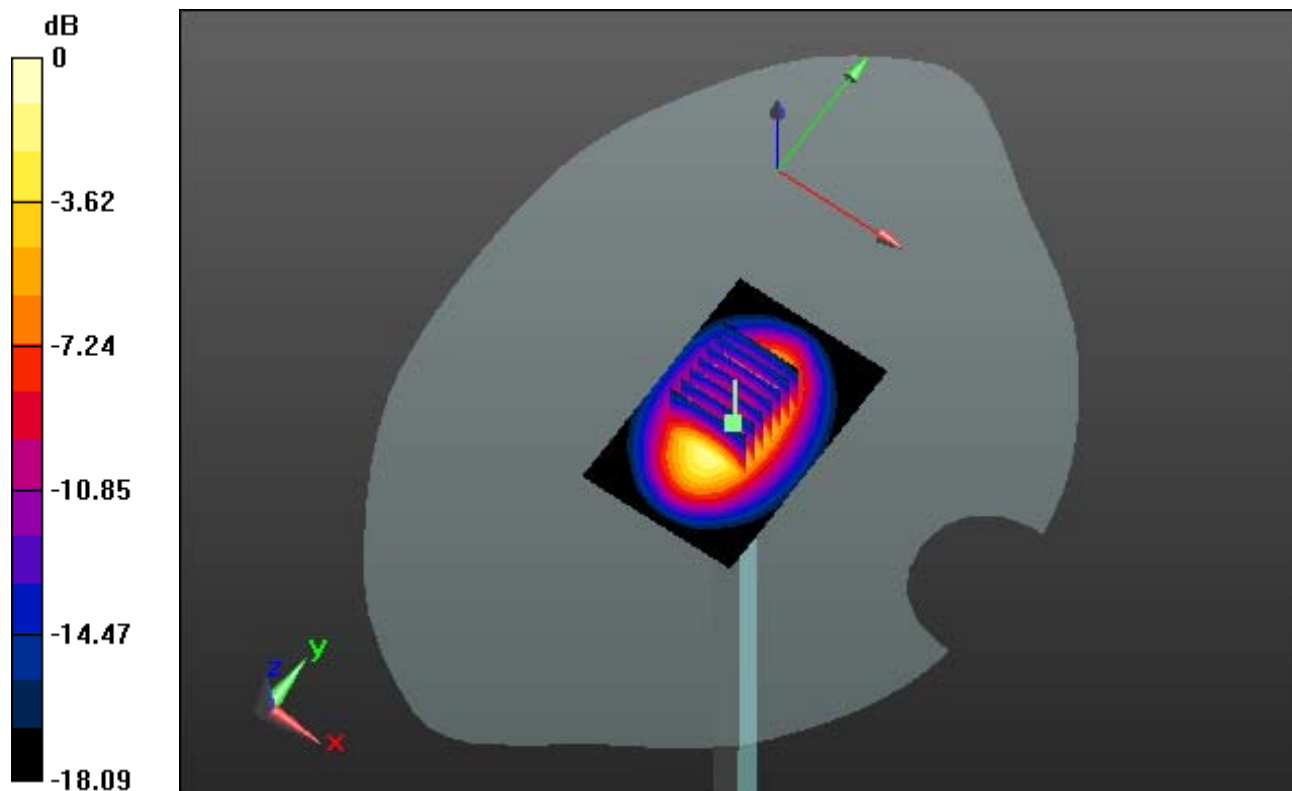
Area Scan (61x91x1): Interpolated grid: dx=15mm, dy=15mm

Zoom Scan (7x7x7)/Cube 0: Measurement grid: dx=5mm, dy=5mm, dz=5mm

Power Drift = 0.03 dB

Peak SAR (extrapolated) = 19.9 W/kg

SAR(1 g) = 10.6 W/kg; SAR(10 g) = 5.46 W/kg



0 dB = 14.4 W/kg

DIGITAL EMC CO., LTD

DUT: Dipole 1900 MHz; Type: D1900V2; Serial: D1900V2 - SN:5d176

Communication System: CW; Frequency: 1900 MHz; Duty Cycle: 1:1
Medium parameters used: $f = 1900$ MHz; $\sigma = 1.409$ S/m; $\epsilon_r = 40.026$; $\rho = 1000$ kg/m³
Phantom section: Flat Section

DASY5 Configuration:

Probe: EX3DV4 - SN3933; ConvF(8.25, 8.25, 8.25); Calibrated: 9/24/2013; ; Electronics: DAE4 Sn1396
Phantom: SAM with CRP_2013_10_08_middle; Type: QD000P40CD; Serial: TP:1786
Measurement SW: DASY52, Version 52.8 (7); SEMCAD X Version 14.6.10 (7164)

Test Date: 2014-02-26; Ambient Temp: 21.0; Tissue Temp: 21.6

1900 MHz System Verification

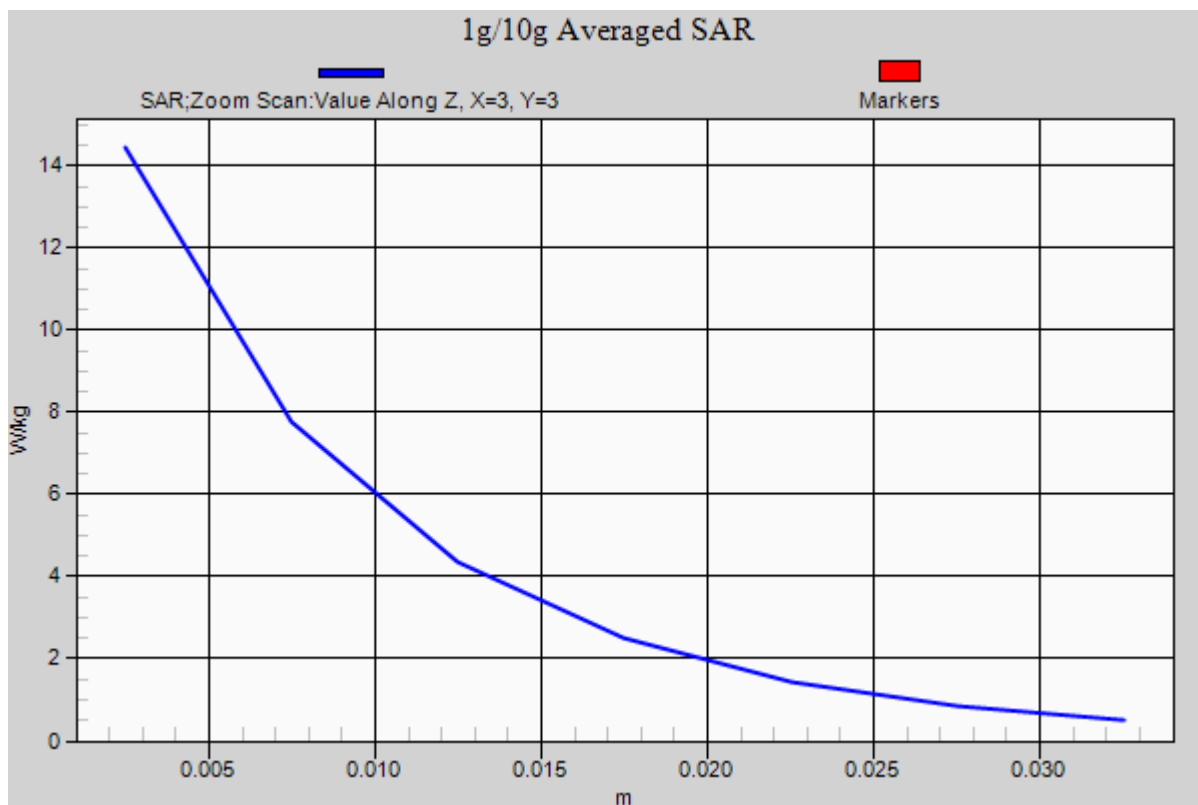
Area Scan (61x91x1): Interpolated grid: dx=15mm, dy=15mm

Zoom Scan (7x7x7)/Cube 0: Measurement grid: dx=5mm, dy=5mm, dz=5mm

Power Drift = 0.03 dB

Peak SAR (extrapolated) = 19.9 W/kg

SAR(1 g) = 10.6 W/kg; SAR(10 g) = 5.46 W/kg



DIGITAL EMC CO., LTD

DUT: Dipole 1900 MHz; Type: D1900V2; Serial: D1900V2 - SN:5d176

Communication System: CW; Frequency: 1900 MHz; Duty Cycle: 1:1
Medium parameters used: $f = 1900$ MHz; $\sigma = 1.527$ S/m; $\epsilon_r = 52.089$; $\rho = 1000$ kg/m³
Phantom section: Flat Section

DASY5 Configuration:

Probe: EX3DV4 - SN3933; ConvF(7.79, 7.79, 7.79); Calibrated: 9/24/2013; ; Electronics: DAE4 Sn1396
Phantom: SAM with CRP_2013_10_08_middle; Type: QD000P40CD; Serial: TP:1786
Measurement SW: DASY52, Version 52.8 (7); SEMCAD X Version 14.6.10 (7164)

Test Date: 2014-02-27; Ambient Temp: 21.1; Tissue Temp: 21.5

1900 MHz System Verification

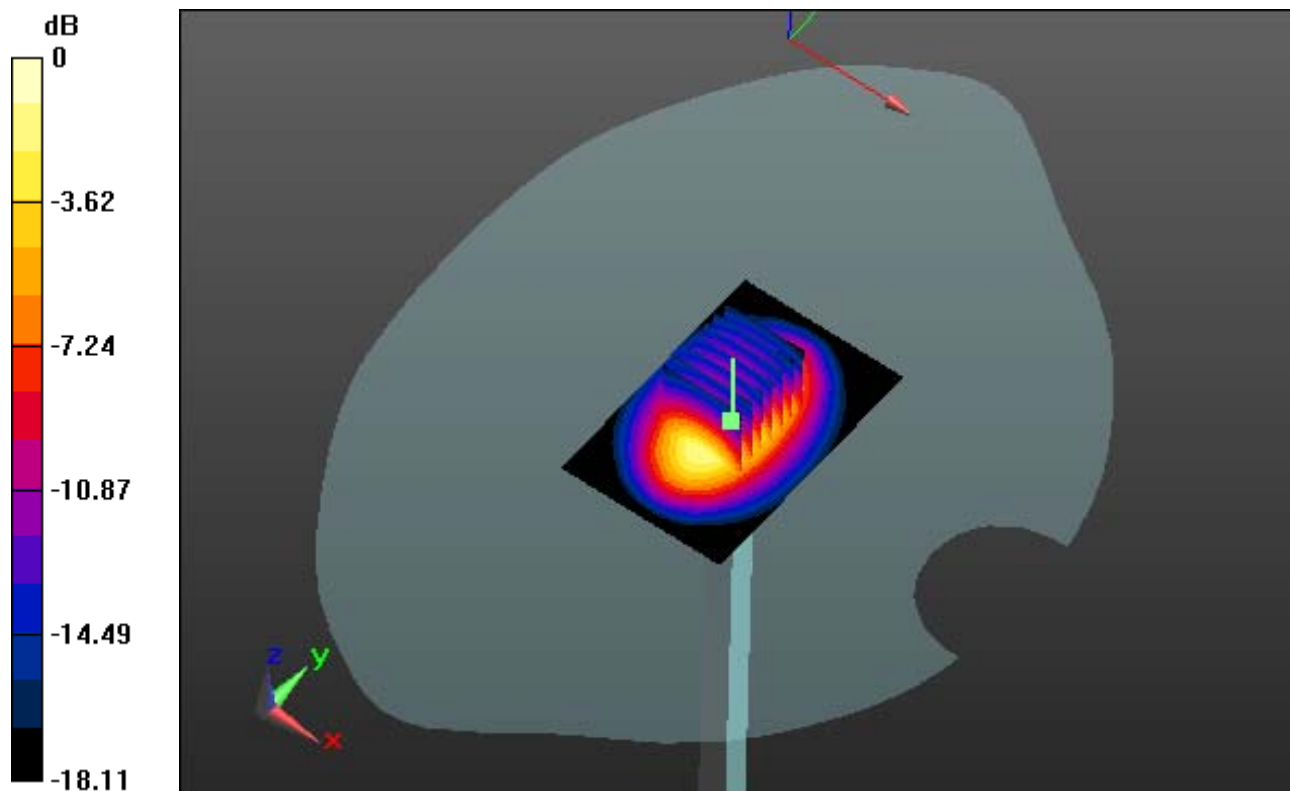
Area Scan (61x91x1): Interpolated grid: dx=15mm, dy=15mm

Zoom Scan (7x7x7)/Cube 0: Measurement grid: dx=5mm, dy=5mm, dz=5mm

Power Drift = 0.03 dB

Peak SAR (extrapolated) = 20.8 W/kg

SAR(1 g) = 10.5 W/kg; SAR(10 g) = 5.27 W/kg



0 dB = 14.6 W/kg

DIGITAL EMC CO., LTD

DUT: Dipole 1900 MHz; Type: D1900V2; Serial: D1900V2 - SN:5d176

Communication System: CW; Frequency: 1900 MHz; Duty Cycle: 1:1
Medium parameters used: $f = 1900$ MHz; $\sigma = 1.527$ S/m; $\epsilon_r = 52.089$; $\rho = 1000$ kg/m³
Phantom section: Flat Section

DASY5 Configuration:

Probe: EX3DV4 - SN3933; ConvF(7.79, 7.79, 7.79); Calibrated: 9/24/2013; ; Electronics: DAE4 Sn1396
Phantom: SAM with CRP_2013_10_08_middle; Type: QD000P40CD; Serial: TP:1786
Measurement SW: DASY52, Version 52.8 (7); SEMCAD X Version 14.6.10 (7164)

Test Date: 2014-02-27; Ambient Temp: 21.1; Tissue Temp: 21.5

1900 MHz System Verification

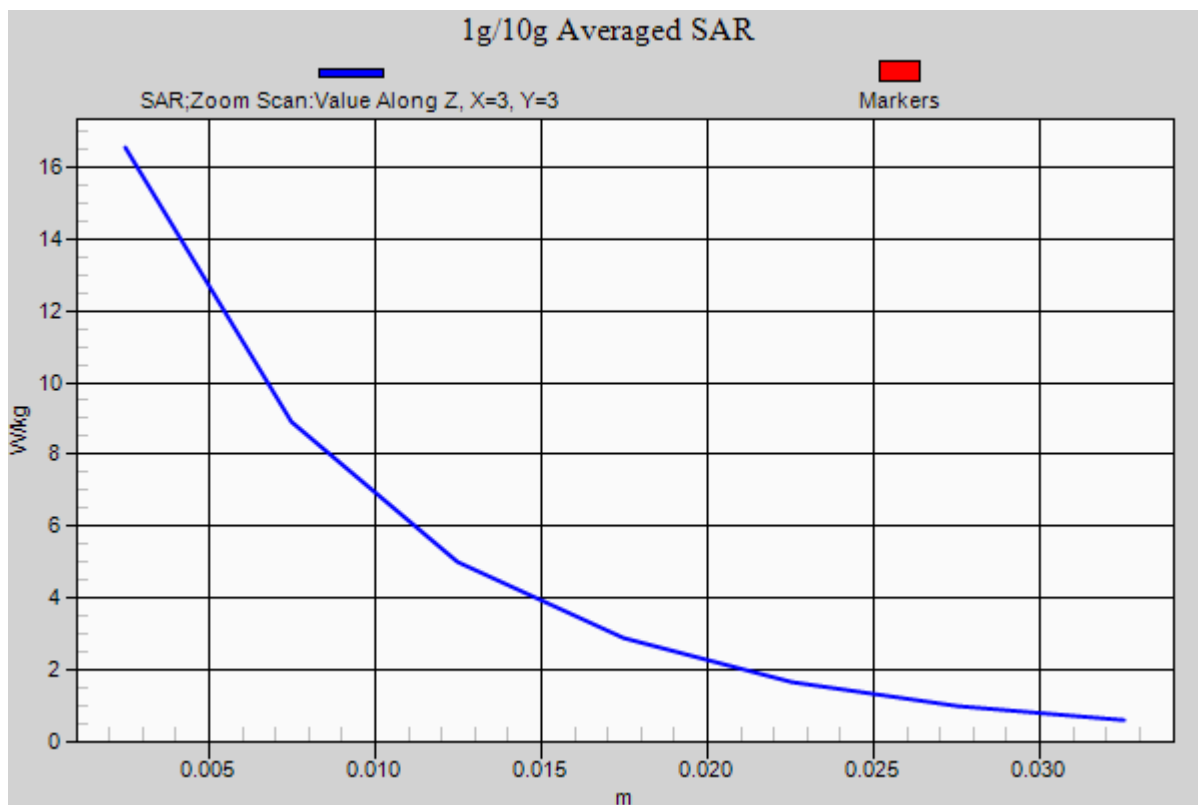
Area Scan (61x91x1): Interpolated grid: dx=15mm, dy=15mm

Zoom Scan (7x7x7)/Cube 0: Measurement grid: dx=5mm, dy=5mm, dz=5mm

Power Drift = 0.03 dB

Peak SAR (extrapolated) = 20.8 W/kg

SAR(1 g) = 10.5 W/kg; SAR(10 g) = 5.27 W/kg



DIGITAL EMC CO., LTD

DUT: Dipole 2450 MHz; Type: D2450V2; Serial: D2450V2 - SN:920

Communication System: CW; Frequency: 2450 MHz; Duty Cycle: 1:1
Medium parameters used: $f = 2450$ MHz; $\sigma = 1.805$ S/m; $\epsilon_r = 38.598$; $\rho = 1000$ kg/m³
Phantom section: Flat Section

DASY5 Configuration:

Probe: EX3DV4 - SN3933; ConvF(7.44, 7.44, 7.44); Calibrated: 9/24/2013; ; Electronics: DAE4 Sn1396
Phantom: SAM with CRP_2013_10_08_middle; Type: QD000P40CD; Serial: TP:1786
Measurement SW: DASY52, Version 52.8 (7); SEMCAD X Version 14.6.10 (7164)

Test Date: 2014-02-21; Ambient Temp: 21.2; Tissue Temp: 21.6

2450 MHz System Verification

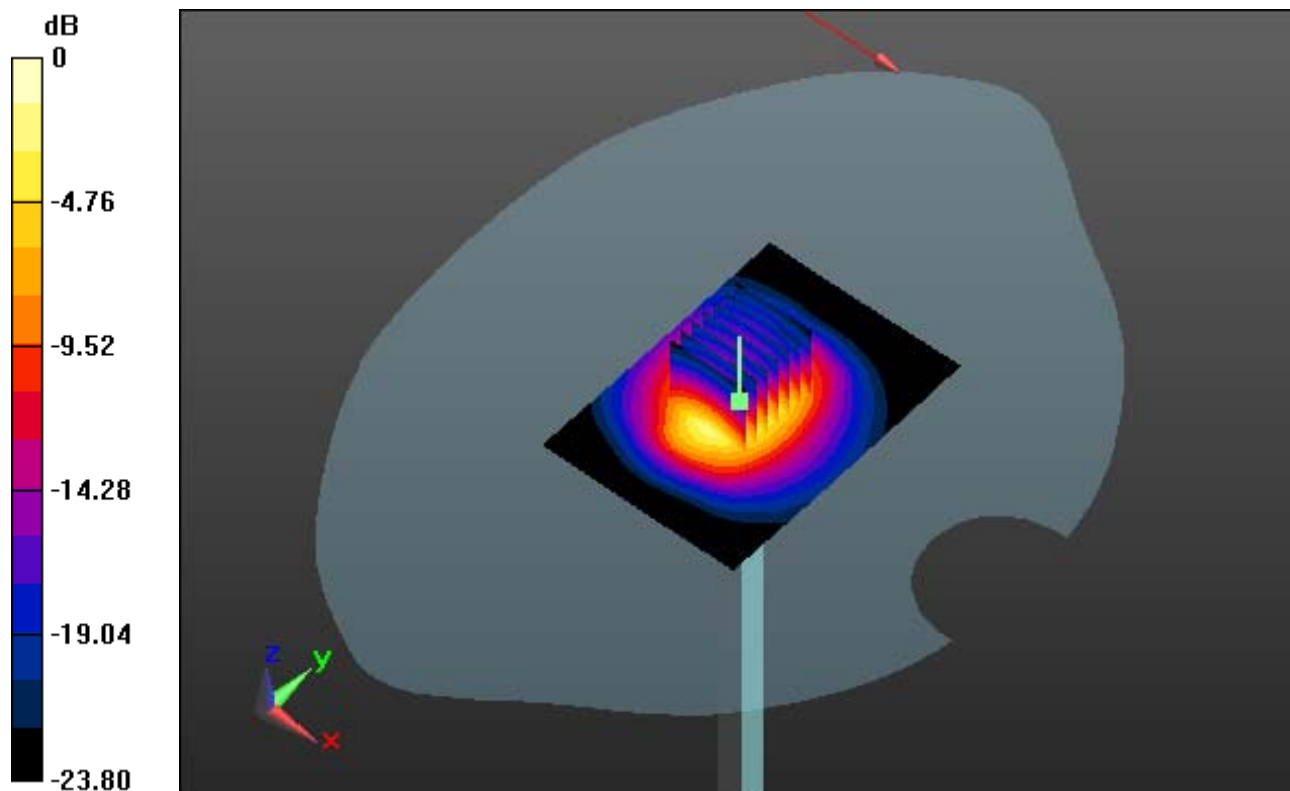
Area Scan (51x71x1): Interpolated grid: dx=12mm, dy=12mm

Zoom Scan (7x7x7)/Cube 0: Measurement grid: dx=5mm, dy=5mm, dz=5mm

Power Drift = 0.03 dB

Peak SAR (extrapolated) = 27.1 W/kg

SAR(1 g) = 13 W/kg; SAR(10 g) = 5.91 W/kg



0 dB = 17.6 W/kg

DIGITAL EMC CO., LTD

DUT: Dipole 2450 MHz; Type: D2450V2; Serial: D2450V2 - SN:920

Communication System: CW; Frequency: 2450 MHz; Duty Cycle: 1:1
Medium parameters used: $f = 2450$ MHz; $\sigma = 1.805$ S/m; $\epsilon_r = 38.598$; $\rho = 1000$ kg/m³
Phantom section: Flat Section

DASY5 Configuration:

Probe: EX3DV4 - SN3933; ConvF(7.44, 7.44, 7.44); Calibrated: 9/24/2013; ; Electronics: DAE4 Sn1396
Phantom: SAM with CRP_2013_10_08_middle; Type: QD000P40CD; Serial: TP:1786
Measurement SW: DASY52, Version 52.8 (7); SEMCAD X Version 14.6.10 (7164)

Test Date: 2014-02-21; Ambient Temp: 21.2; Tissue Temp: 21.6

2450 MHz System Verification

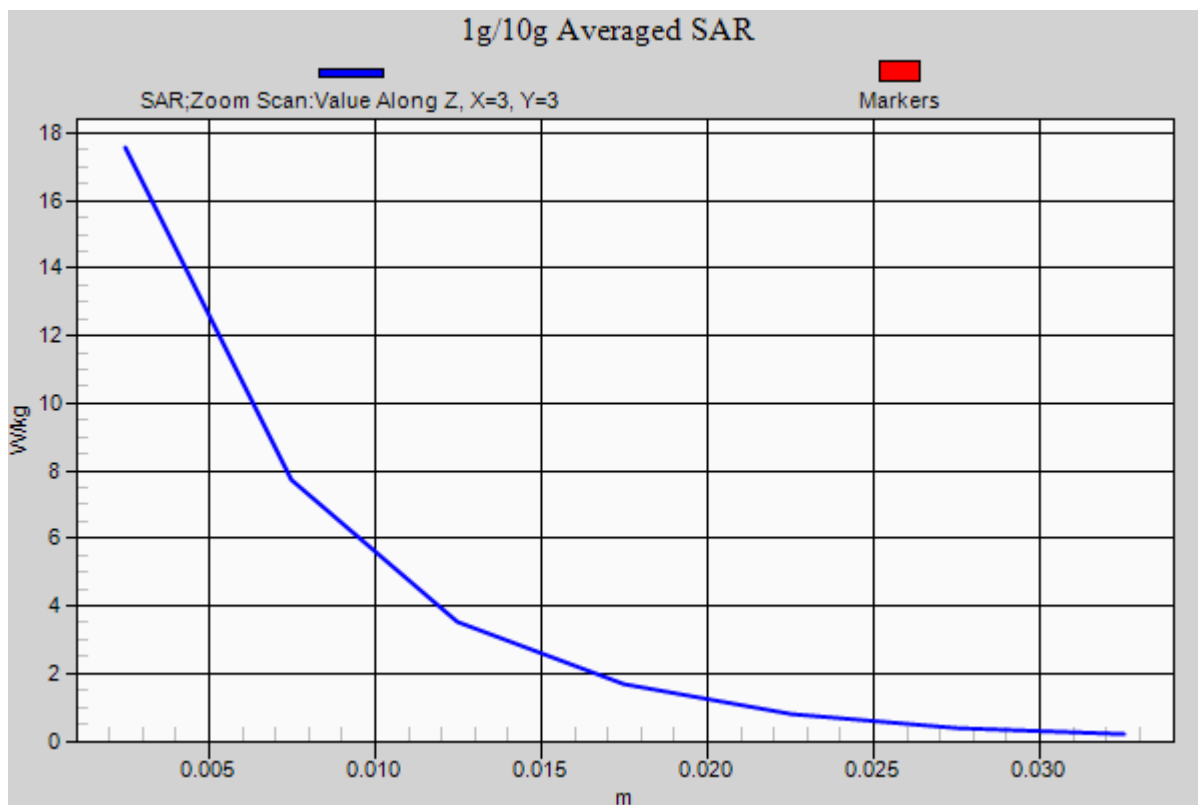
Area Scan (51x71x1): Interpolated grid: dx=12mm, dy=12mm

Zoom Scan (7x7x7)/Cube 0: Measurement grid: dx=5mm, dy=5mm, dz=5mm

Power Drift = 0.03 dB

Peak SAR (extrapolated) = 27.1 W/kg

SAR(1 g) = 13 W/kg; SAR(10 g) = 5.91 W/kg



DIGITAL EMC CO., LTD

DUT: Dipole 2450 MHz; Type: D2450V2; Serial: D2450V2 - SN:920

Communication System: CW; Frequency: 2450 MHz; Duty Cycle: 1:1
Medium parameters used: $f = 2450$ MHz; $\sigma = 1.968$ S/m; $\epsilon_r = 51.394$; $\rho = 1000$ kg/m³
Phantom section: Flat Section

DASY5 Configuration:

Probe: EX3DV4 - SN3933; ConvF(7.36, 7.36, 7.36); Calibrated: 9/24/2013; ; Electronics: DAE4 Sn1396
Phantom: SAM with CRP_2013_10_08_middle; Type: QD000P40CD; Serial: TP:1786
Measurement SW: DASY52, Version 52.8 (7); SEMCAD X Version 14.6.10 (7164)

Test Date: 2014-02-21; Ambient Temp: 21.2; Tissue Temp: 21.6

2450 MHz System Verification

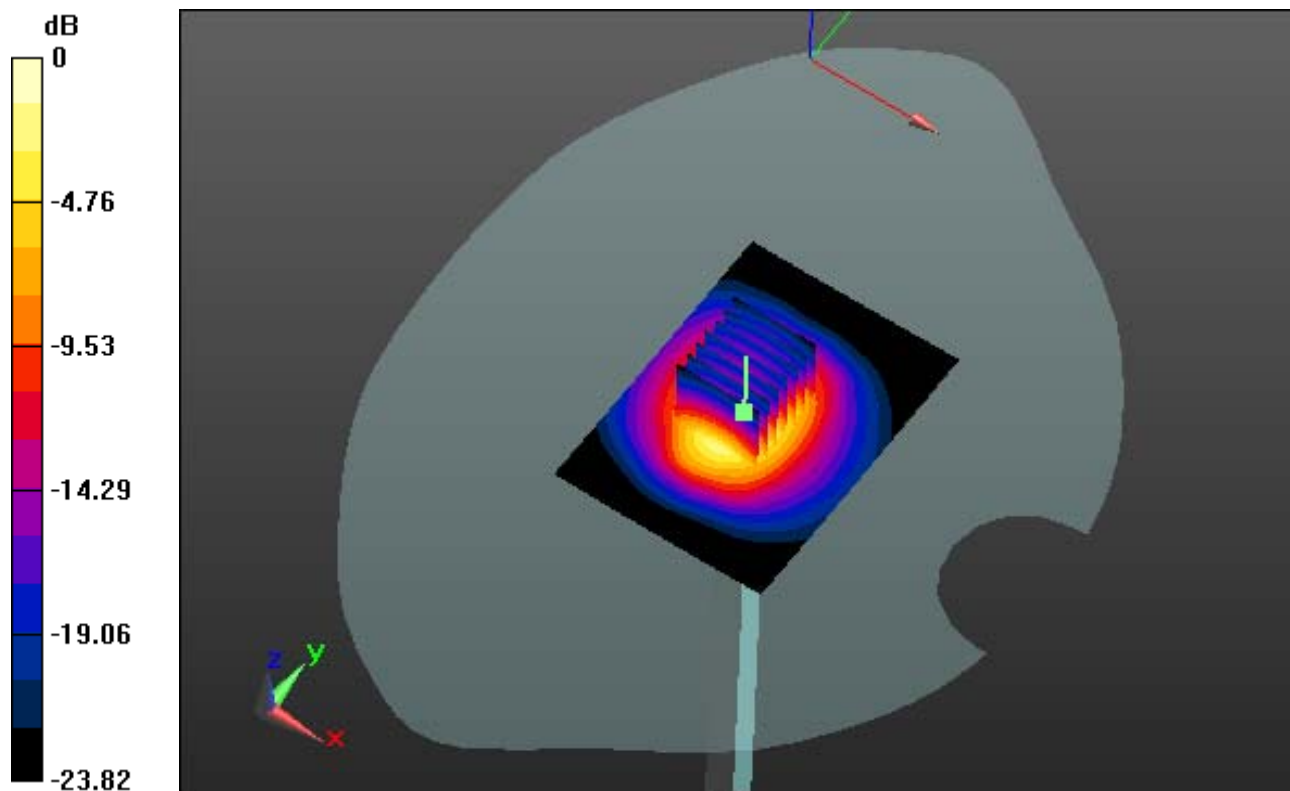
Area Scan (51x71x1): Interpolated grid: dx=12mm, dy=12mm

Zoom Scan (7x7x7)/Cube 0: Measurement grid: dx=5mm, dy=5mm, dz=5mm

Power Drift = 0.08 dB

Peak SAR (extrapolated) = 29.2 W/kg

SAR(1 g) = 12.3 W/kg; SAR(10 g) = 5.98 W/kg



0 dB = 18.5 W/kg

DIGITAL EMC CO., LTD

DUT: Dipole 2450 MHz; Type: D2450V2; Serial: D2450V2 - SN:920

Communication System: CW; Frequency: 2450 MHz; Duty Cycle: 1:1
Medium parameters used: $f = 2450$ MHz; $\sigma = 1.968$ S/m; $\epsilon_r = 51.394$; $\rho = 1000$ kg/m³
Phantom section: Flat Section

DASY5 Configuration:

Probe: EX3DV4 - SN3933; ConvF(7.36, 7.36, 7.36); Calibrated: 9/24/2013; ; Electronics: DAE4 Sn1396
Phantom: SAM with CRP_2013_10_08_middle; Type: QD000P40CD; Serial: TP:1786
Measurement SW: DASY52, Version 52.8 (7); SEMCAD X Version 14.6.10 (7164)

Test Date: 2014-02-21; Ambient Temp: 21.2; Tissue Temp: 21.6

2450 MHz System Verification

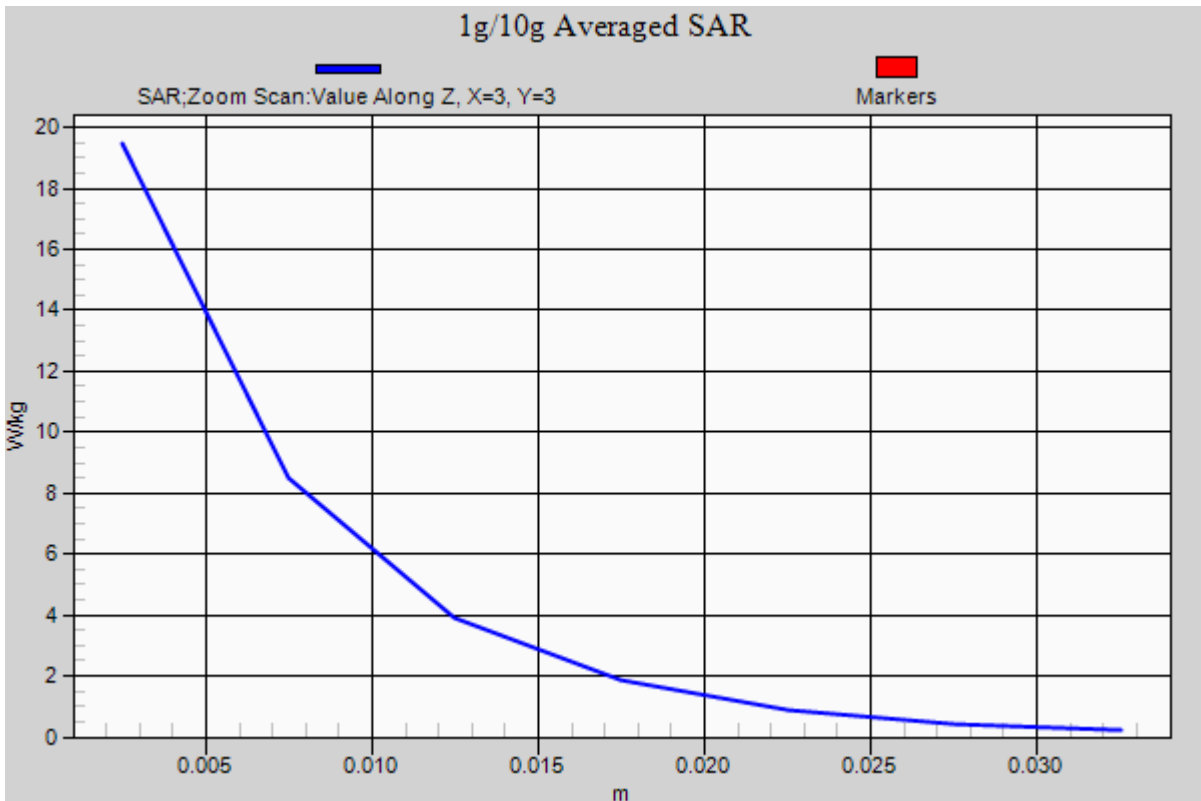
Area Scan (51x71x1): Interpolated grid: dx=12mm, dy=12mm

Zoom Scan (7x7x7)/Cube 0: Measurement grid: dx=5mm, dy=5mm, dz=5mm

Power Drift = 0.08 dB

Peak SAR (extrapolated) = 29.2 W/kg

SAR(1 g) = 12.3 W/kg; SAR(10 g) = 5.98 W/kg



DIGITAL EMC CO., LTD

DUT: LG-D160f; Type: Bar

Communication System: GSM 850_12 (0); Frequency: 836.6 MHz; Duty Cycle: 1:2.075
Medium parameters used: $f = 836.6$ MHz; $\sigma = 0.92$ S/m; $\epsilon_r = 40.976$; $\rho = 1000$ kg/m³
Phantom section: Left Section

DASY5 Configuration:

Probe: EX3DV4 - SN3933; ConvF(10.06, 10.06, 10.06); Calibrated: 9/24/2013; Electronics: DAE4 Sn1396
Phantom: SAM with CRP_2013_10_08_middle; Type: QD000P40CD; Serial: TP:1786
Measurement SW: DASY52, Version 52.8 (7); SEMCAD X Version 14.6.10 (7164)

Test Date: 2014-02-24; Ambient Temp: 20.7; Tissue Temp: 21.4

Left Touch, GSM850 GPRS 4 Tx Ch. 190, Ant Internal, Standard Battery

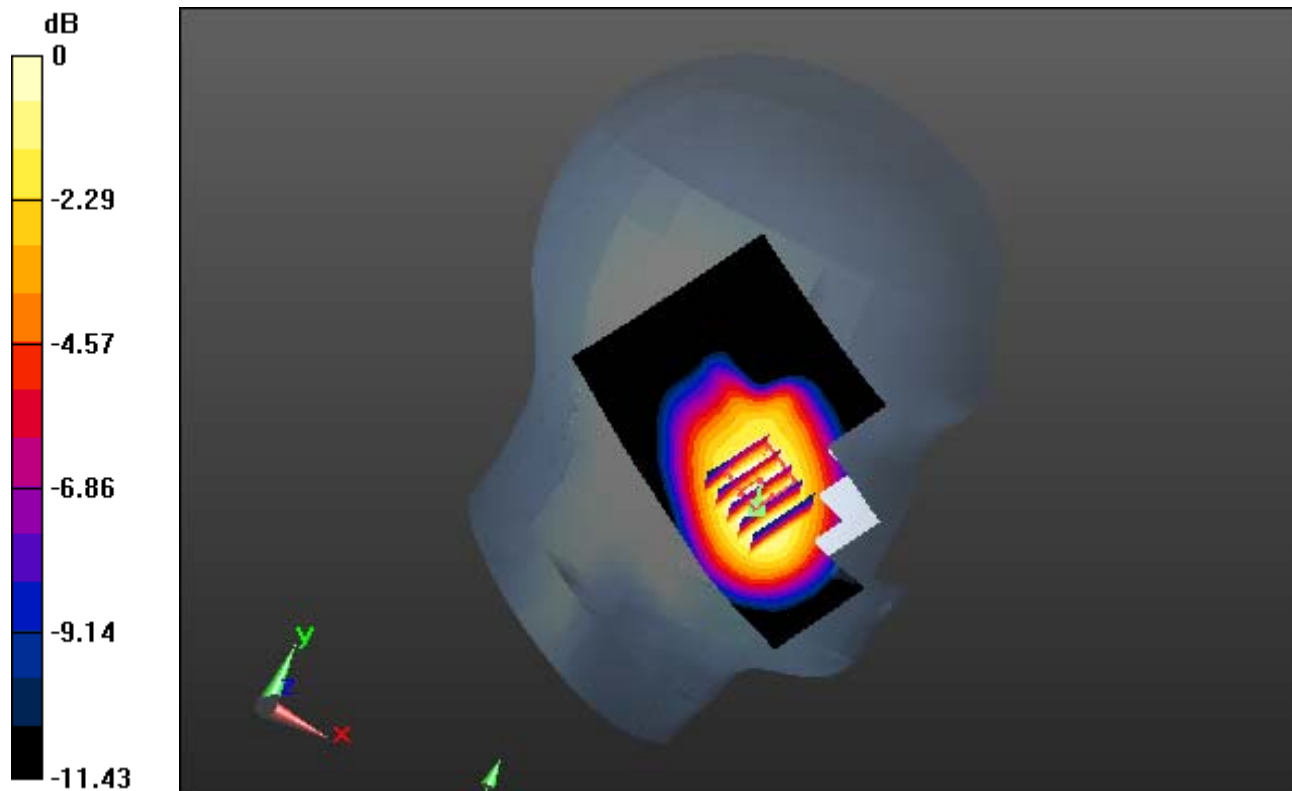
Area Scan (71x101x1): Interpolated grid: dx=15mm, dy=15mm

Zoom Scan (5x5x7)/Cube 0: Measurement grid: dx=8mm, dy=8mm, dz=5mm

Power Drift = 0.01 dB

Peak SAR (extrapolated) = 0.896 W/kg

SAR(1 g) = 0.661 W/kg; SAR(10 g) = 0.471 W/kg



0 dB = 0.790 W/kg

DIGITAL EMC CO., LTD

DUT: LG-D160f; Type: Bar

Communication System: GSM 850_12 (0); Frequency: 836.6 MHz; Duty Cycle: 1:2.075
Medium parameters used: $f = 836.6$ MHz; $\sigma = 0.92$ S/m; $\epsilon_r = 40.976$; $\rho = 1000$ kg/m³
Phantom section: Left Section

DASY5 Configuration:

Probe: EX3DV4 - SN3933; ConvF(10.06, 10.06, 10.06); Calibrated: 9/24/2013; Electronics: DAE4 Sn1396
Phantom: SAM with CRP_2013_10_08_middle; Type: QD000P40CD; Serial: TP:1786
Measurement SW: DASY52, Version 52.8 (7); SEMCAD X Version 14.6.10 (7164)

Test Date: 2014-02-24; Ambient Temp: 20.7; Tissue Temp: 21.4

Left Touch, GSM850 GPRS 4 Tx Ch. 190, Ant Internal, Standard Battery

With Enlarge plot image

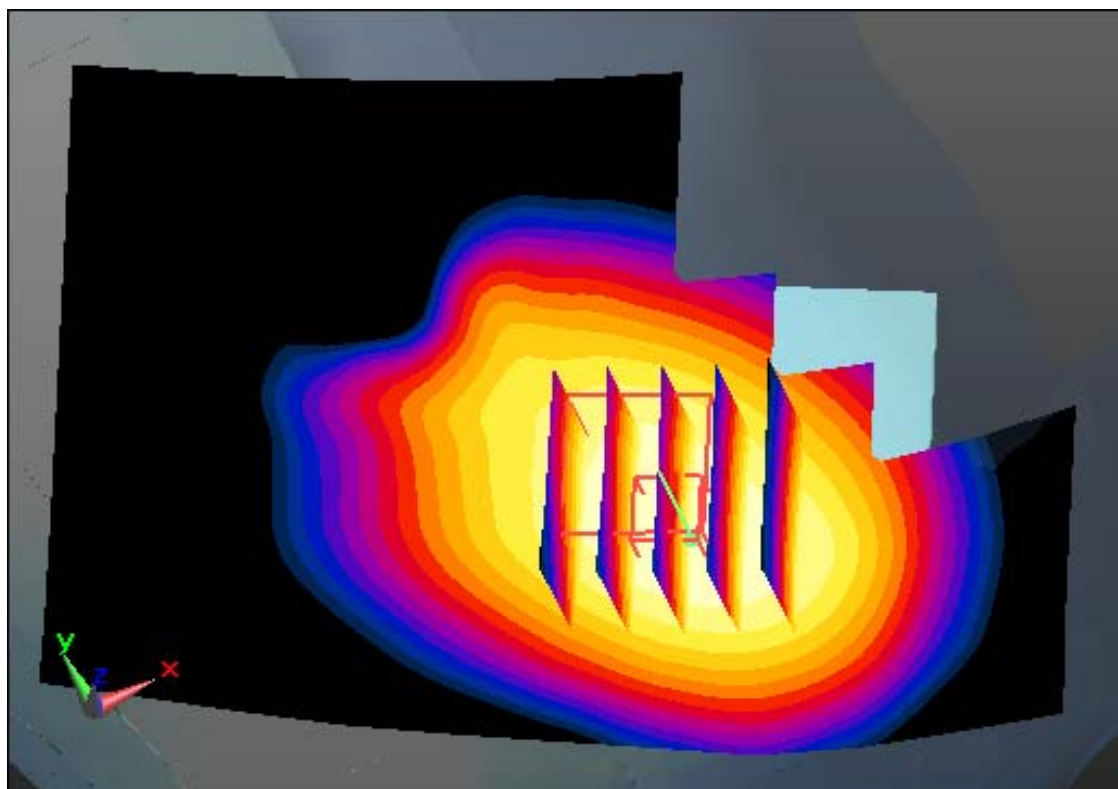
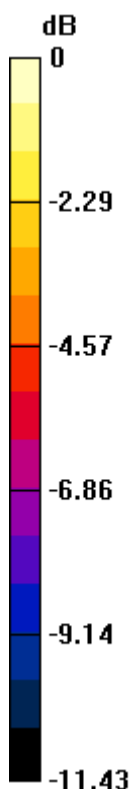
Area Scan (71x101x1): Interpolated grid: dx=15mm, dy=15mm

Zoom Scan (5x5x7)/Cube 0: Measurement grid: dx=8mm, dy=8mm, dz=5mm

Power Drift = 0.01 dB

Peak SAR (extrapolated) = 0.896 W/kg

SAR(1 g) = 0.661 W/kg; SAR(10 g) = 0.471 W/kg



0 dB = 0.790 W/kg

DIGITAL EMC CO., LTD

DUT: LG-D160f; Type: Bar

Communication System: GSM 850_12 (0); Frequency: 836.6 MHz; Duty Cycle: 1:2.075
Medium parameters used: $f = 836.6$ MHz; $\sigma = 0.92$ S/m; $\epsilon_r = 40.976$; $\rho = 1000$ kg/m³
Phantom section: Left Section

DASY5 Configuration:

Probe: EX3DV4 - SN3933; ConvF(10.06, 10.06, 10.06); Calibrated: 9/24/2013; Electronics: DAE4 Sn1396
Phantom: SAM with CRP_2013_10_08_middle; Type: QD000P40CD; Serial: TP:1786
Measurement SW: DASY52, Version 52.8 (7); SEMCAD X Version 14.6.10 (7164)

Test Date: 2014-02-24; Ambient Temp: 20.7; Tissue Temp: 21.4

Left Touch, GSM850 GPRS 4 Tx Ch. 190, Ant Internal, Standard Battery

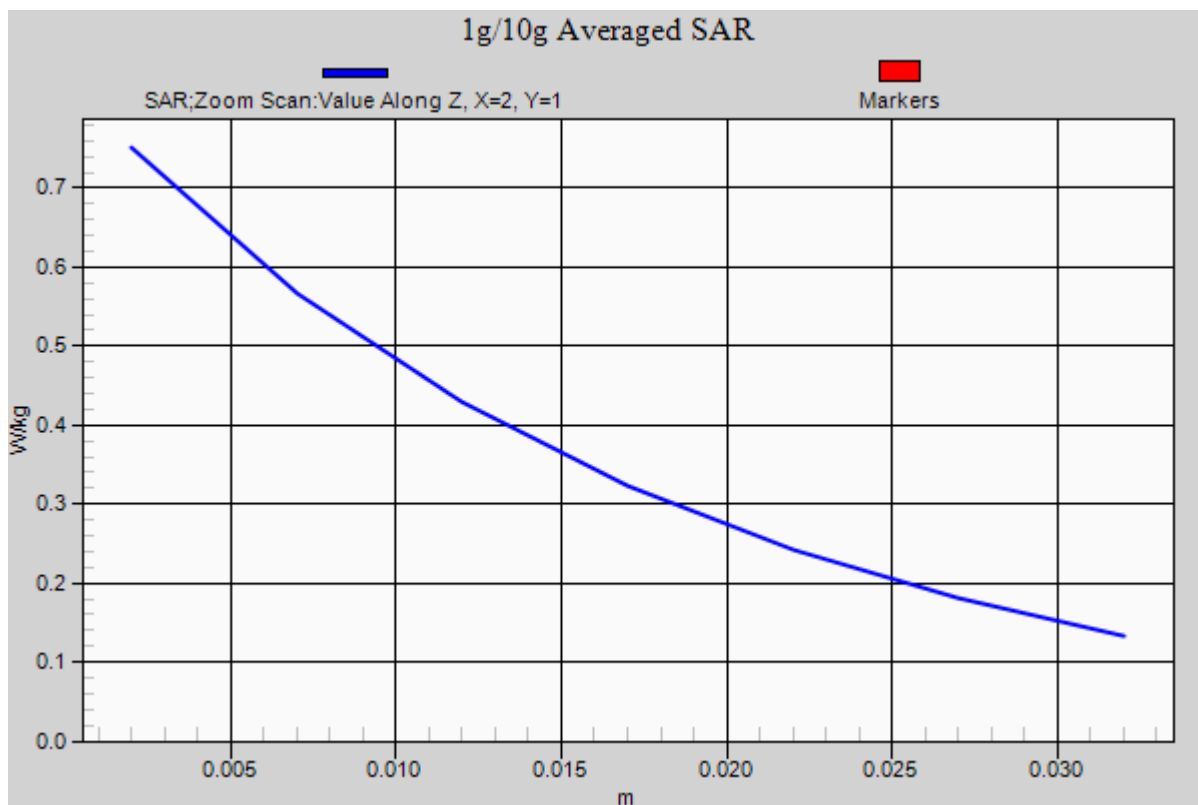
Area Scan (71x101x1): Interpolated grid: dx=15mm, dy=15mm

Zoom Scan (5x5x7)/Cube 0: Measurement grid: dx=8mm, dy=8mm, dz=5mm

Power Drift = 0.01 dB

Peak SAR (extrapolated) = 0.896 W/kg

SAR(1 g) = 0.661 W/kg; SAR(10 g) = 0.471 W/kg



DIGITAL EMC CO., LTD

DUT: LG-D160f; Type: Bar

Communication System: PCS1900_Class 10 (0); Frequency: 1880 MHz; Duty Cycle: 1:4.15

Medium parameters used: $f = 1880$ MHz; $\sigma = 1.397$ S/m; $\epsilon_r = 40.101$; $\rho = 1000$ kg/m³

Phantom section: Left Section

DASY5 Configuration:

Probe: EX3DV4 - SN3933; ConvF(8.25, 8.25, 8.25); Calibrated: 9/24/2013; Electronics: DAE4 Sn1396

Phantom: SAM with CRP_2013_10_08_middle; Type: QD000P40CD; Serial: TP:1786

Measurement SW: DASY52, Version 52.8 (7); SEMCAD X Version 14.6.10 (7164)

Test Date: 2014-02-26; Ambient Temp: 21.0; Tissue Temp: 21.6

Left Touch, PCS1900 GPRS 2 Tx Ch. 661, Ant Internal, Standard Battery

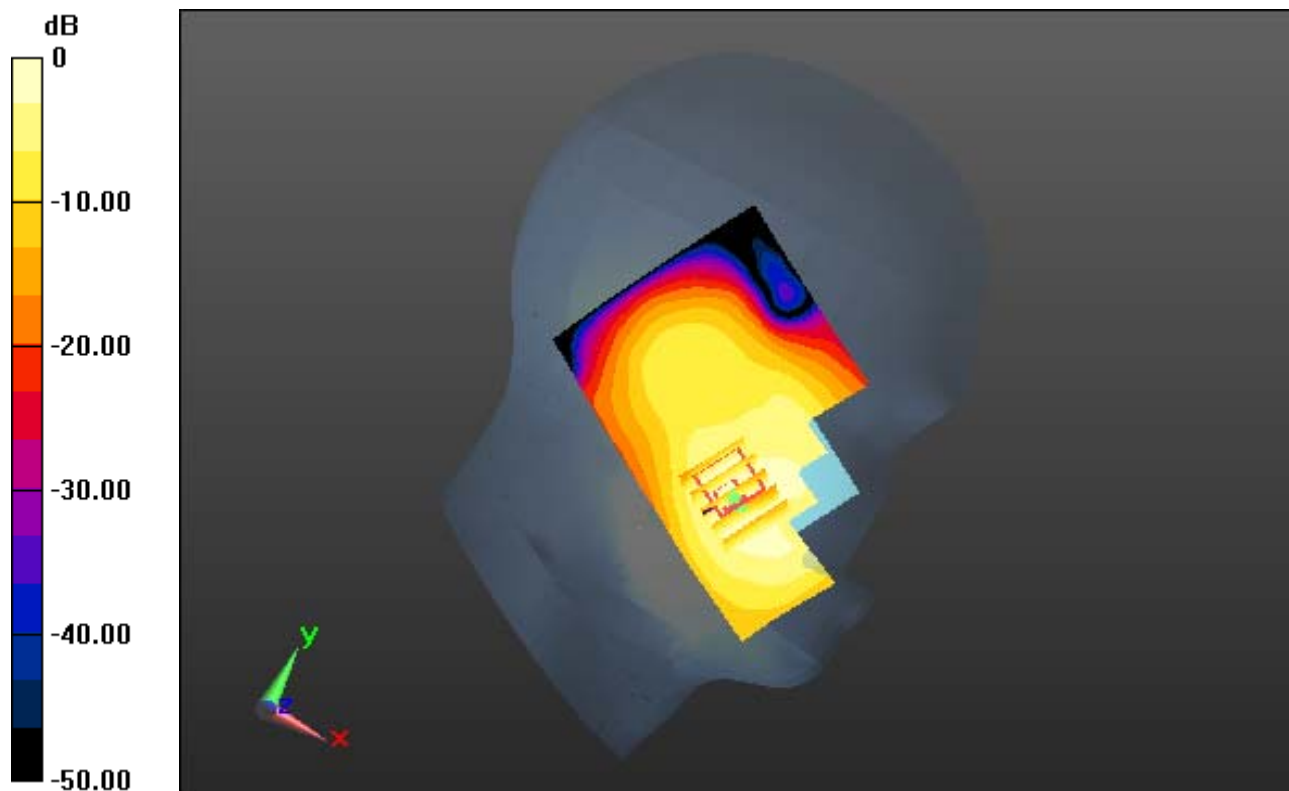
Area Scan (71x101x1): Interpolated grid: dx=15mm, dy=15mm

Zoom Scan (5x5x7)/Cube 0: Measurement grid: dx=8mm, dy=8mm, dz=5mm

Power Drift = 0.14 dB

Peak SAR (extrapolated) = 0.855 W/kg

SAR(1 g) = 0.547 W/kg; SAR(10 g) = 0.303 W/kg



0 dB = 0.704 W/kg

DIGITAL EMC CO., LTD

DUT: LG-D160f; Type: Bar

Communication System: PCS1900_Class 10 (0); Frequency: 1880 MHz; Duty Cycle: 1:4.15

Medium parameters used: $f = 1880$ MHz; $\sigma = 1.397$ S/m; $\epsilon_r = 40.101$; $\rho = 1000$ kg/m³

Phantom section: Left Section

DASY5 Configuration:

Probe: EX3DV4 - SN3933; ConvF(8.25, 8.25, 8.25); Calibrated: 9/24/2013; Electronics: DAE4 Sn1396

Phantom: SAM with CRP_2013_10_08_middle; Type: QD000P40CD; Serial: TP:1786

Measurement SW: DASY52, Version 52.8 (7); SEMCAD X Version 14.6.10 (7164)

Test Date: 2014-02-26; Ambient Temp: 21.0; Tissue Temp: 21.6

Left Touch, PCS1900 GPRS 2 Tx Ch. 661, Ant Internal, Standard Battery

With Enlarge plot image

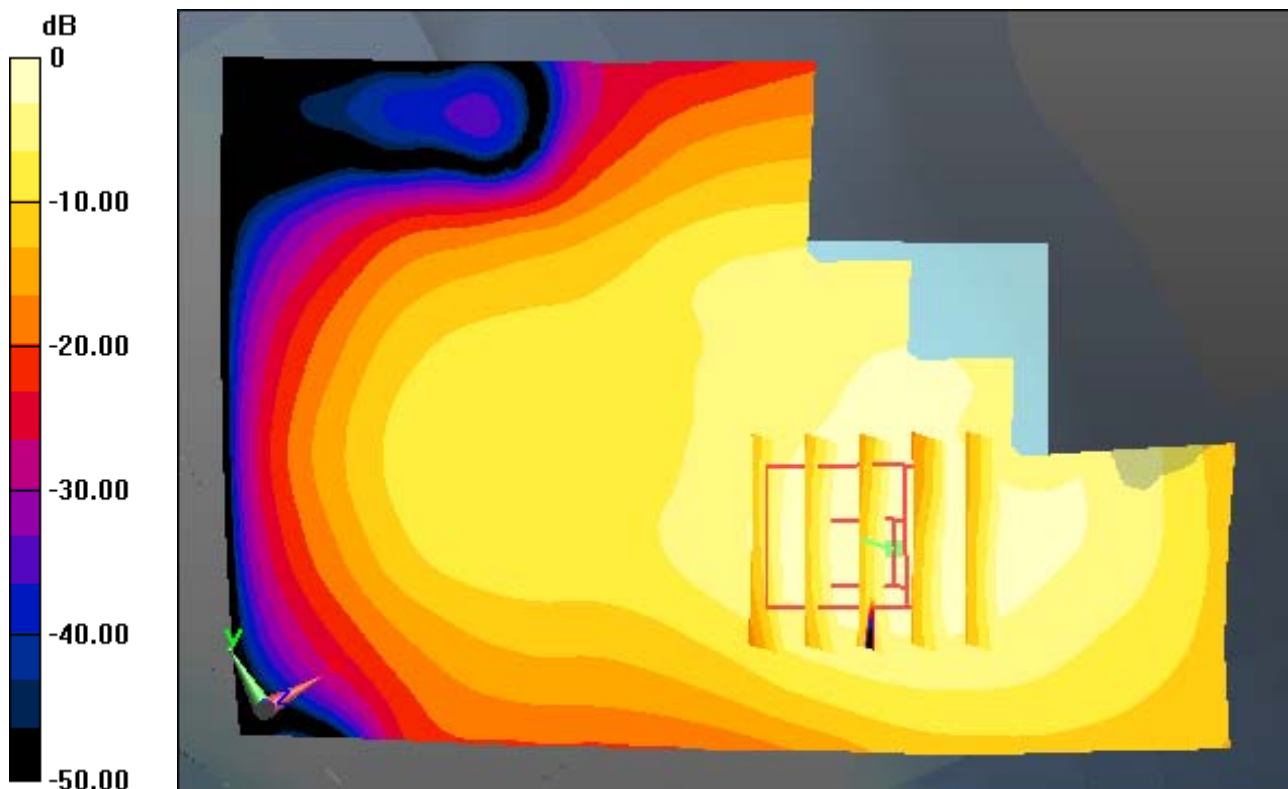
Area Scan (71x101x1): Interpolated grid: dx=15mm, dy=15mm

Zoom Scan (5x5x7)/Cube 0: Measurement grid: dx=8mm, dy=8mm, dz=5mm

Power Drift = 0.14 dB

Peak SAR (extrapolated) = 0.855 W/kg

SAR(1 g) = 0.547 W/kg; SAR(10 g) = 0.303 W/kg



0 dB = 0.704 W/kg

DIGITAL EMC CO., LTD

DUT: LG-D160f; Type: Bar

Communication System: PCS1900_Class 10 (0); Frequency: 1880 MHz; Duty Cycle: 1:4.15
Medium parameters used: $f = 1880$ MHz; $\sigma = 1.397$ S/m; $\epsilon_r = 40.101$; $\rho = 1000$ kg/m³
Phantom section: Left Section

DASY5 Configuration:

Probe: EX3DV4 - SN3933; ConvF(8.25, 8.25, 8.25); Calibrated: 9/24/2013; Electronics: DAE4 Sn1396
Phantom: SAM with CRP_2013_10_08_middle; Type: QD000P40CD; Serial: TP:1786
Measurement SW: DASY52, Version 52.8 (7); SEMCAD X Version 14.6.10 (7164)

Test Date: 2014-02-26; Ambient Temp: 21.0; Tissue Temp: 21.6

Left Touch, PCS1900 GPRS 2 Tx Ch. 661, Ant Internal, Standard Battery

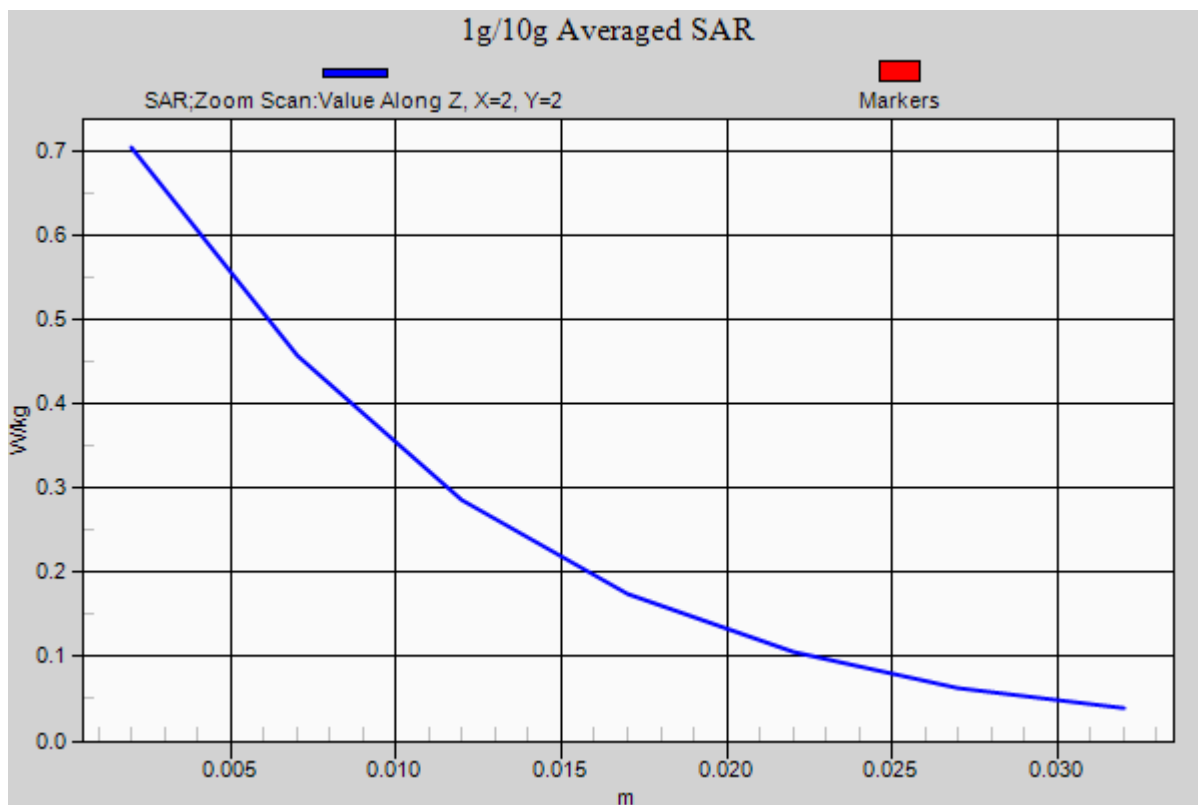
Area Scan (71x101x1): Interpolated grid: dx=15mm, dy=15mm

Zoom Scan (5x5x7)/Cube 0: Measurement grid: dx=8mm, dy=8mm, dz=5mm

Power Drift = 0.14 dB

Peak SAR (extrapolated) = 0.855 W/kg

SAR(1 g) = 0.547 W/kg; SAR(10 g) = 0.303 W/kg



DIGITAL EMC CO., LTD

DUT: LG-D160f; Type: Bar

Communication System: WCDMA 850 (0); Frequency: 836.6 MHz; Duty Cycle: 1:1
Medium parameters used: $f = 836.6$ MHz; $\sigma = 0.914$ S/m; $\epsilon_r = 40.424$; $\rho = 1000$ kg/m³
Phantom section: Left Section

DASY5 Configuration:

Probe: EX3DV4 - SN3933; ConvF(10.06, 10.06, 10.06); Calibrated: 9/24/2013; Electronics: DAE4 Sn1396
Phantom: SAM with CRP_2013_10_08_middle; Type: QD000P40CD; Serial: TP:1786
Measurement SW: DASY52, Version 52.8 (7); SEMCAD X Version 14.6.10 (7164)

Test Date: 2014-02-28; Ambient Temp: 21.2; Tissue Temp: 21.7

Left Touch, WCDMA850 Ch. 4183, Ant Internal, Standard Battery

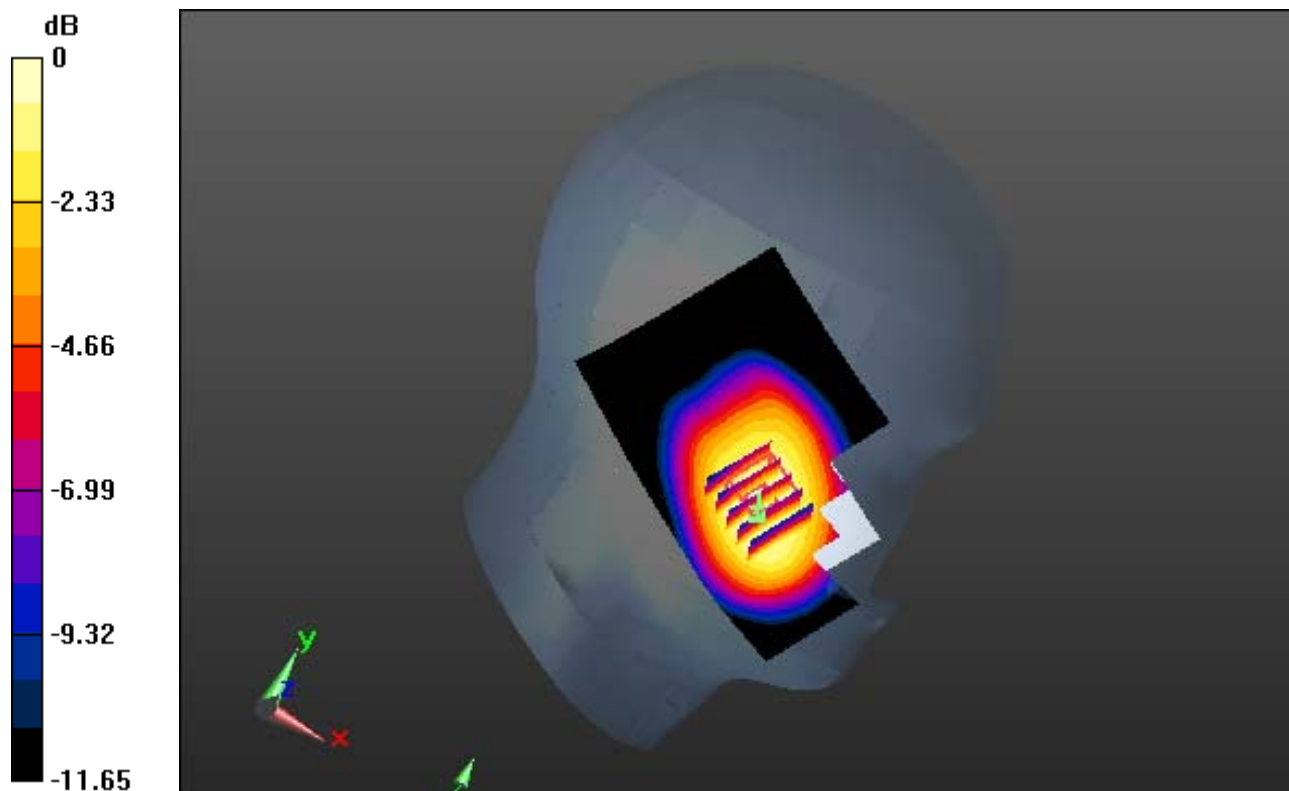
Area Scan (71x101x1): Interpolated grid: dx=15mm, dy=15mm

Zoom Scan (5x5x7)/Cube 0: Measurement grid: dx=8mm, dy=8mm, dz=5mm

Power Drift = -0.17 dB

Peak SAR (extrapolated) = 0.563 W/kg

SAR(1 g) = 0.418 W/kg; SAR(10 g) = 0.303 W/kg



0 dB = 0.497 W/kg

DIGITAL EMC CO., LTD

DUT: LG-D160f; Type: Bar

Communication System: WCDMA 850 (0); Frequency: 836.6 MHz; Duty Cycle: 1:1
Medium parameters used: $f = 836.6$ MHz; $\sigma = 0.914$ S/m; $\epsilon_r = 40.424$; $\rho = 1000$ kg/m³
Phantom section: Left Section

DASY5 Configuration:

Probe: EX3DV4 - SN3933; ConvF(10.06, 10.06, 10.06); Calibrated: 9/24/2013; Electronics: DAE4 Sn1396
Phantom: SAM with CRP_2013_10_08_middle; Type: QD000P40CD; Serial: TP:1786
Measurement SW: DASY52, Version 52.8 (7); SEMCAD X Version 14.6.10 (7164)

Test Date: 2014-02-28; Ambient Temp: 21.2; Tissue Temp: 21.7

Left Touch, WCDMA850 Ch. 4183, Ant Internal, Standard Battery

With Enlarge plot image

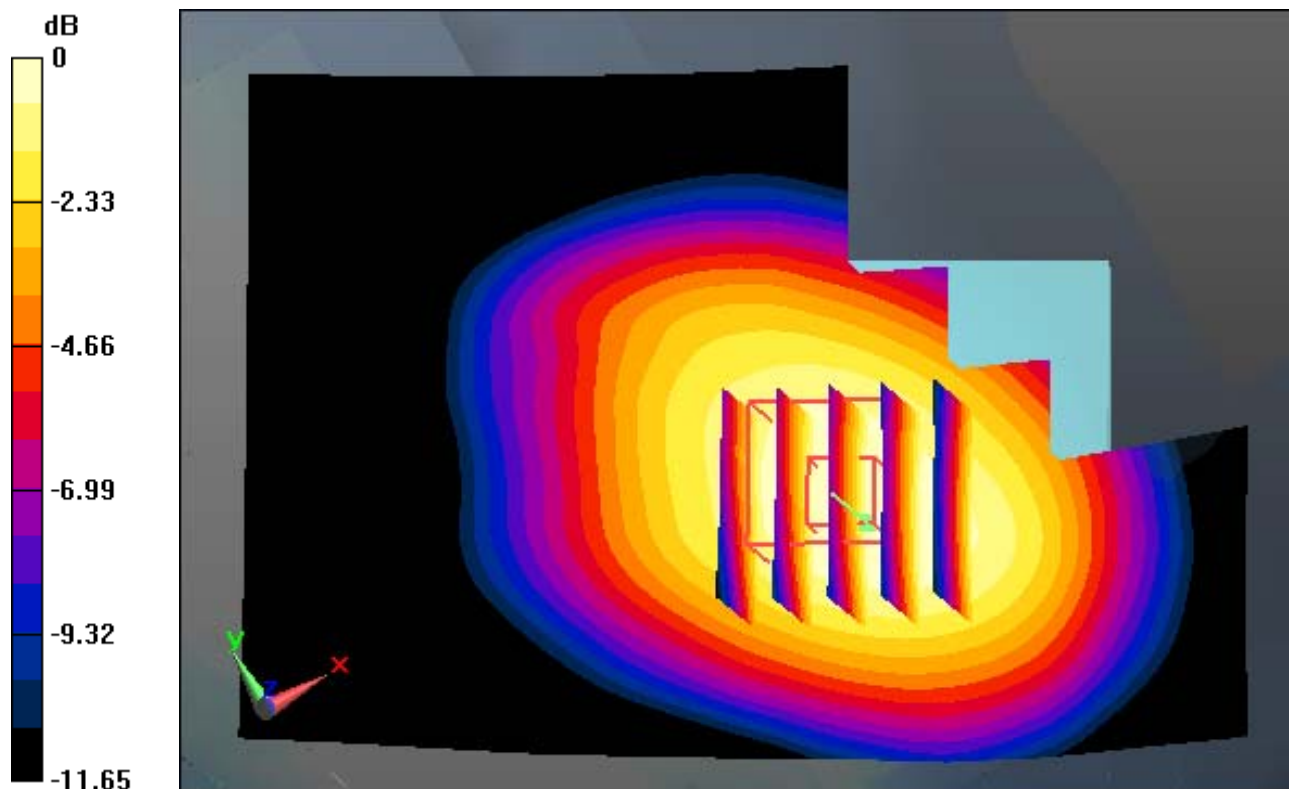
Area Scan (71x101x1): Interpolated grid: dx=15mm, dy=15mm

Zoom Scan (5x5x7)/Cube 0: Measurement grid: dx=8mm, dy=8mm, dz=5mm

Power Drift = -0.17 dB

Peak SAR (extrapolated) = 0.563 W/kg

SAR(1 g) = 0.418 W/kg; SAR(10 g) = 0.303 W/kg



0 dB = 0.497 W/kg

DIGITAL EMC CO., LTD

DUT: LG-D160f; Type: Bar

Communication System: WCDMA 850 (0); Frequency: 836.6 MHz; Duty Cycle: 1:1
Medium parameters used: $f = 836.6$ MHz; $\sigma = 0.914$ S/m; $\epsilon_r = 40.424$; $\rho = 1000$ kg/m³
Phantom section: Left Section

DASY5 Configuration:

Probe: EX3DV4 - SN3933; ConvF(10.06, 10.06, 10.06); Calibrated: 9/24/2013; Electronics: DAE4 Sn1396
Phantom: SAM with CRP_2013_10_08_middle; Type: QD000P40CD; Serial: TP:1786
Measurement SW: DASY52, Version 52.8 (7); SEMCAD X Version 14.6.10 (7164)

Test Date: 2014-02-28; Ambient Temp: 21.2; Tissue Temp: 21.7

Left Touch, WCDMA850 Ch. 4183, Ant Internal, Standard Battery

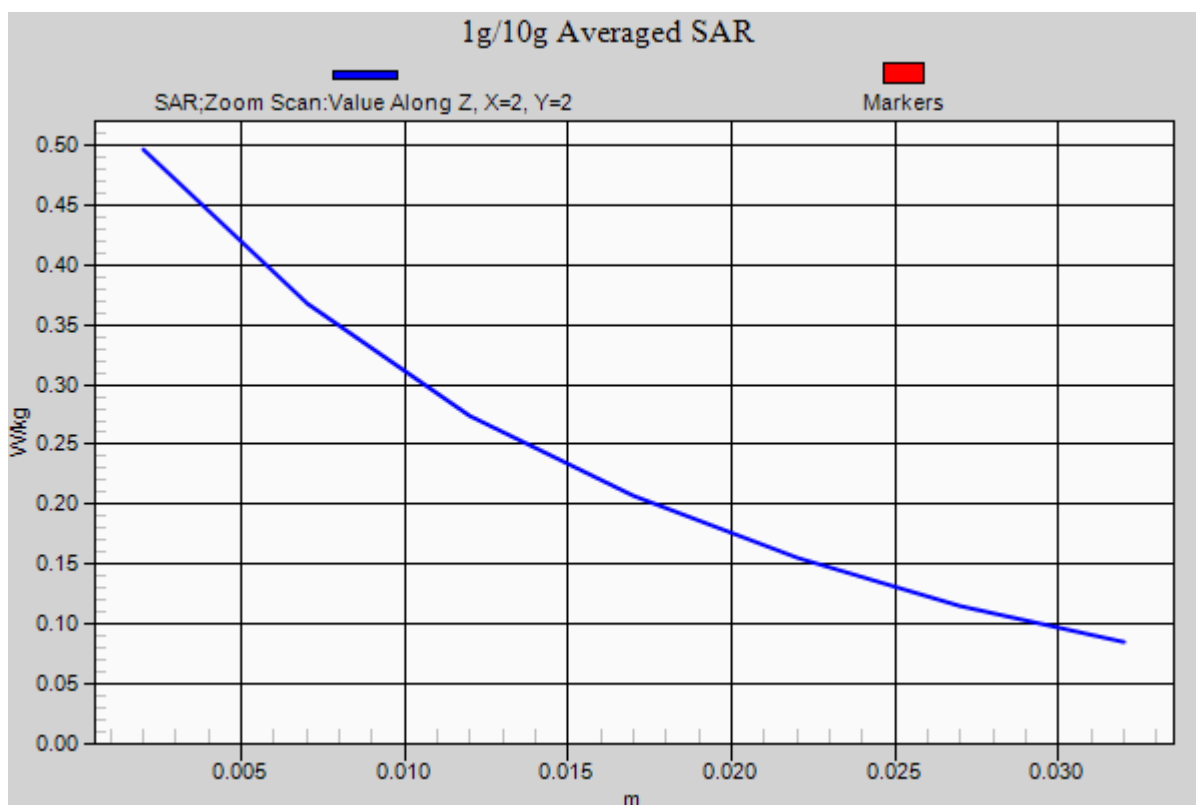
Area Scan (71x101x1): Interpolated grid: dx=15mm, dy=15mm

Zoom Scan (5x5x7)/Cube 0: Measurement grid: dx=8mm, dy=8mm, dz=5mm

Power Drift = -0.17 dB

Peak SAR (extrapolated) = 0.563 W/kg

SAR(1 g) = 0.418 W/kg; SAR(10 g) = 0.303 W/kg



DIGITAL EMC CO., LTD

DUT: LG-D160f; Type: Bar

Communication System: W-LAN (0); Frequency: 2412 MHz; Duty Cycle: 1:1
Medium parameters used: $f = 2412$ MHz; $\sigma = 1.769$ S/m; $\epsilon_r = 38.661$; $\rho = 1000$ kg/m³
Phantom section: Right Section

DASY5 Configuration:

Probe: EX3DV4 - SN3933; ConvF(7.44, 7.44, 7.44); Calibrated: 9/24/2013; Electronics: DAE4 Sn1396
Phantom: SAM with CRP_2013_10_08_middle; Type: QD000P40CD; Serial: TP:1786
Measurement SW: DASY52, Version 52.8 (7); SEMCAD X Version 14.6.10 (7164)

Test Date: 2014-02-21; Ambient Temp: 21.2; Tissue Temp: 21.6

Right Touch, W-LAN(802.11b) Ch. 1, Ant Internal, Standard Battery

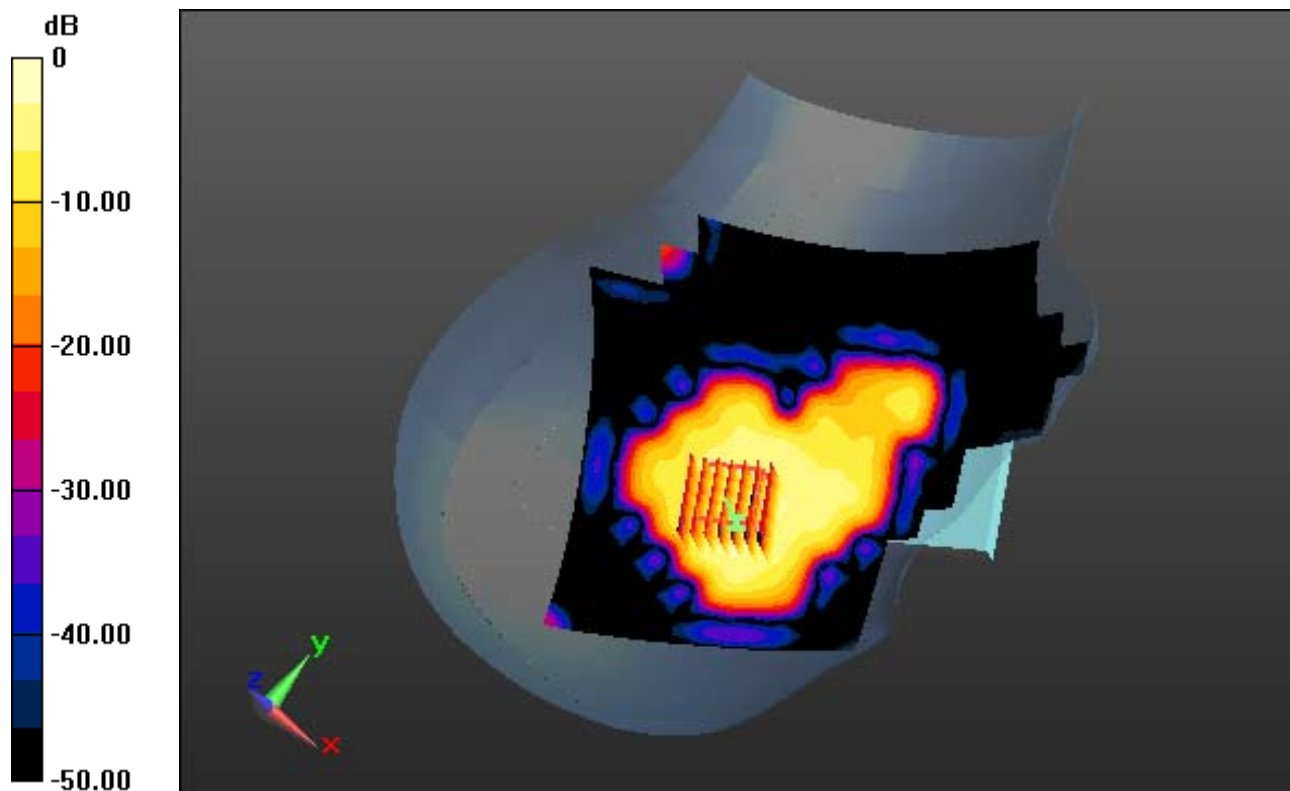
Area Scan (131x161x1): Interpolated grid: dx=12mm, dy=12mm

Zoom Scan (7x7x7)/Cube 0: Measurement grid: dx=5mm, dy=5mm, dz=5mm

Power Drift = 0.18 dB

Peak SAR (extrapolated) = 0.340 W/kg

SAR(1 g) = 0.144 W/kg; SAR(10 g) = 0.065 W/kg



0 dB = 0.228 W/kg

DIGITAL EMC CO., LTD

DUT: LG-D160f; Type: Bar

Communication System: W-LAN (0); Frequency: 2412 MHz; Duty Cycle: 1:1
Medium parameters used: $f = 2412$ MHz; $\sigma = 1.769$ S/m; $\epsilon_r = 38.661$; $\rho = 1000$ kg/m³
Phantom section: Right Section

DASY5 Configuration:

Probe: EX3DV4 - SN3933; ConvF(7.44, 7.44, 7.44); Calibrated: 9/24/2013; Electronics: DAE4 Sn1396
Phantom: SAM with CRP_2013_10_08_middle; Type: QD000P40CD; Serial: TP:1786
Measurement SW: DASY52, Version 52.8 (7); SEMCAD X Version 14.6.10 (7164)

Test Date: 2014-02-21; Ambient Temp: 21.2; Tissue Temp: 21.6

Right Touch, W-LAN(802.11b) Ch. 1, Ant Internal, Standard Battery

With Enlarge plot image

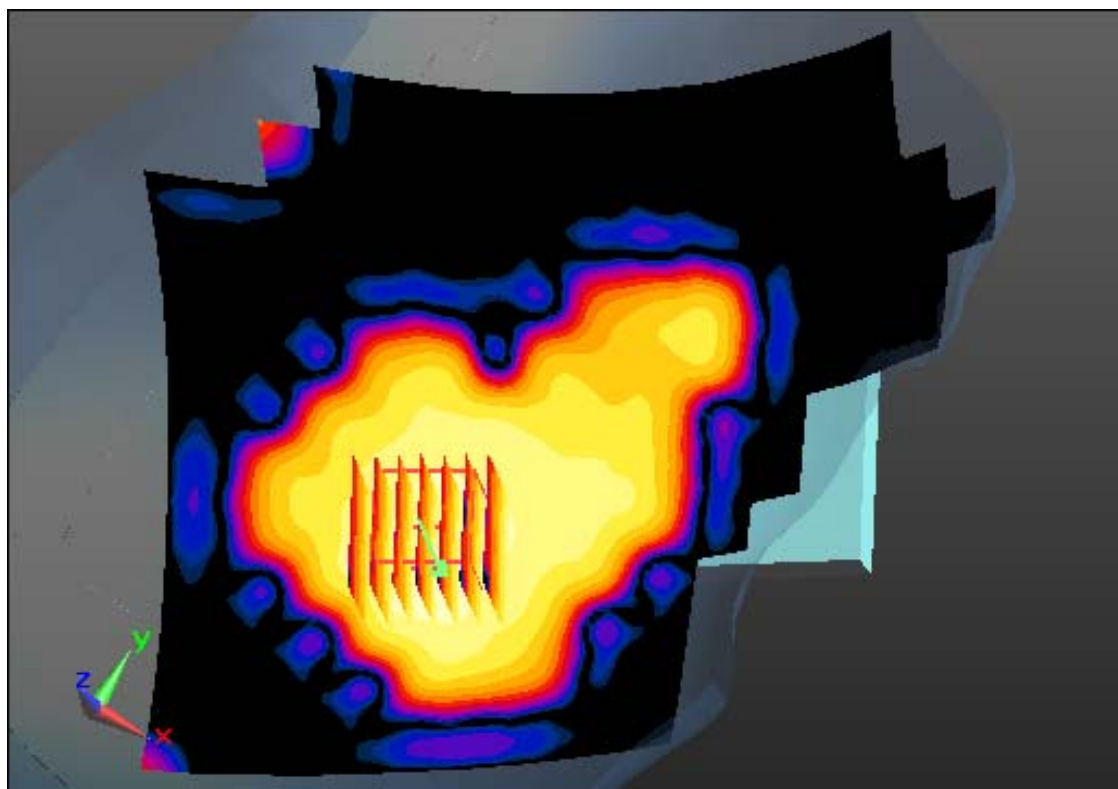
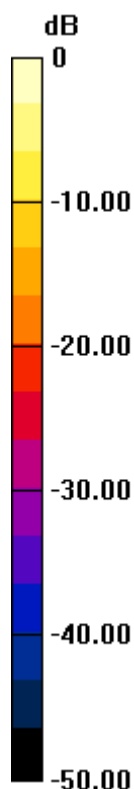
Area Scan (131x161x1): Interpolated grid: dx=12mm, dy=12mm

Zoom Scan (7x7x7)/Cube 0: Measurement grid: dx=5mm, dy=5mm, dz=5mm

Power Drift = 0.18 dB

Peak SAR (extrapolated) = 0.340 W/kg

SAR(1 g) = 0.144 W/kg; SAR(10 g) = 0.065 W/kg



0 dB = 0.228 W/kg

DIGITAL EMC CO., LTD

DUT: LG-D160f; Type: Bar

Communication System: W-LAN (0); Frequency: 2412 MHz; Duty Cycle: 1:1
Medium parameters used: $f = 2412$ MHz; $\sigma = 1.769$ S/m; $\epsilon_r = 38.661$; $\rho = 1000$ kg/m³
Phantom section: Right Section

DASY5 Configuration:

Probe: EX3DV4 - SN3933; ConvF(7.44, 7.44, 7.44); Calibrated: 9/24/2013; Electronics: DAE4 Sn1396
Phantom: SAM with CRP_2013_10_08_middle; Type: QD000P40CD; Serial: TP:1786
Measurement SW: DASY52, Version 52.8 (7); SEMCAD X Version 14.6.10 (7164)

Test Date: 2014-02-21; Ambient Temp: 21.2; Tissue Temp: 21.6

Right Touch, W-LAN(802.11b) Ch. 1, Ant Internal, Standard Battery

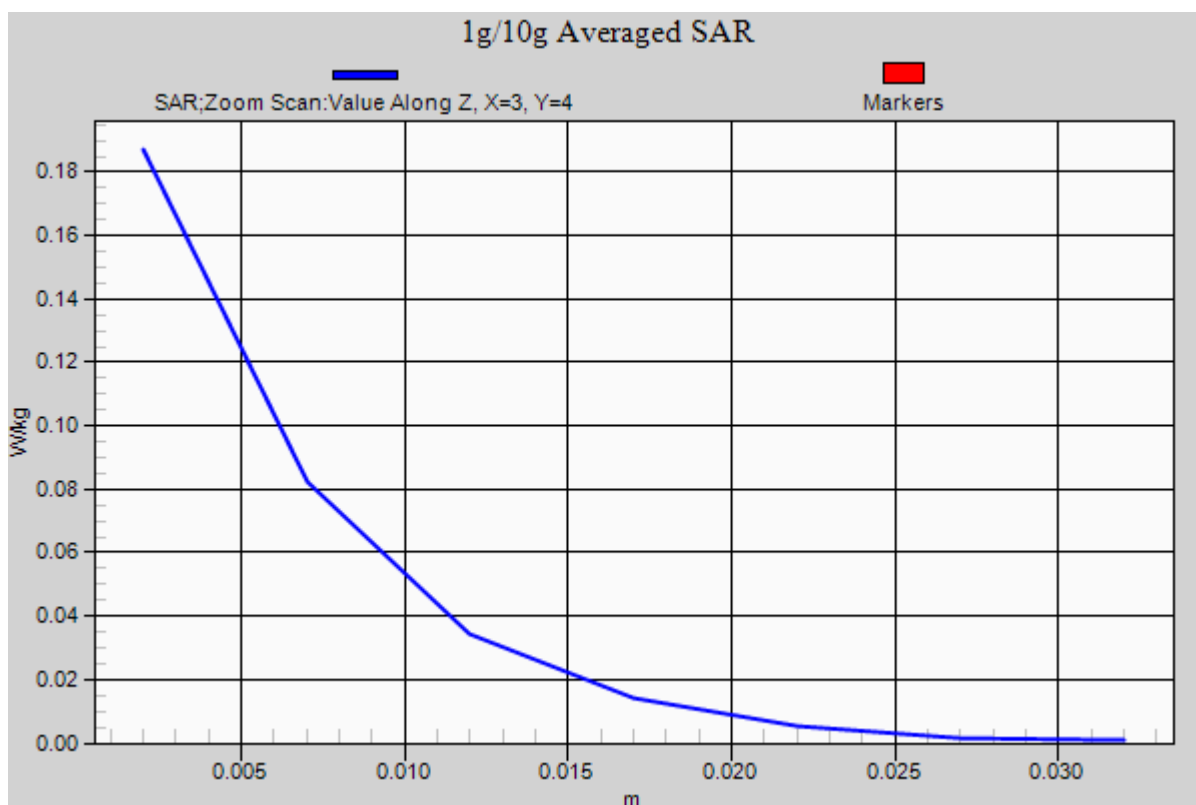
Area Scan (131x161x1): Interpolated grid: dx=12mm, dy=12mm

Zoom Scan (7x7x7)/Cube 0: Measurement grid: dx=5mm, dy=5mm, dz=5mm

Power Drift = 0.18 dB

Peak SAR (extrapolated) = 0.340 W/kg

SAR(1 g) = 0.144 W/kg; SAR(10 g) = 0.065 W/kg



DIGITAL EMC CO., LTD

DUT: LG-D160f; Type: Bar

Communication System: GSM 850 (0); Frequency: 836.6 MHz; Duty Cycle: 1:8.3
Medium parameters used: $f = 836.6$ MHz; $\sigma = 0.979$ S/m; $\epsilon_r = 55.345$; $\rho = 1000$ kg/m³
Phantom section: Flat Section

DASY5 Configuration:

Probe: EX3DV4 - SN3933; ConvF(9.79, 9.79, 9.79); Calibrated: 9/24/2013; Electronics: DAE4 Sn1396
Phantom: SAM with CRP_2013_10_08_middle; Type: QD000P40CD; Serial: TP:1786
Measurement SW: DASY52, Version 52.8 (7); SEMCAD X Version 14.6.10 (7164)

Test Date: 2014-02-25; Ambient Temp: 20.8; Tissue Temp: 21.4

1 cm space from Body, Rear, GSM850 Ch. 190, Ant Internal

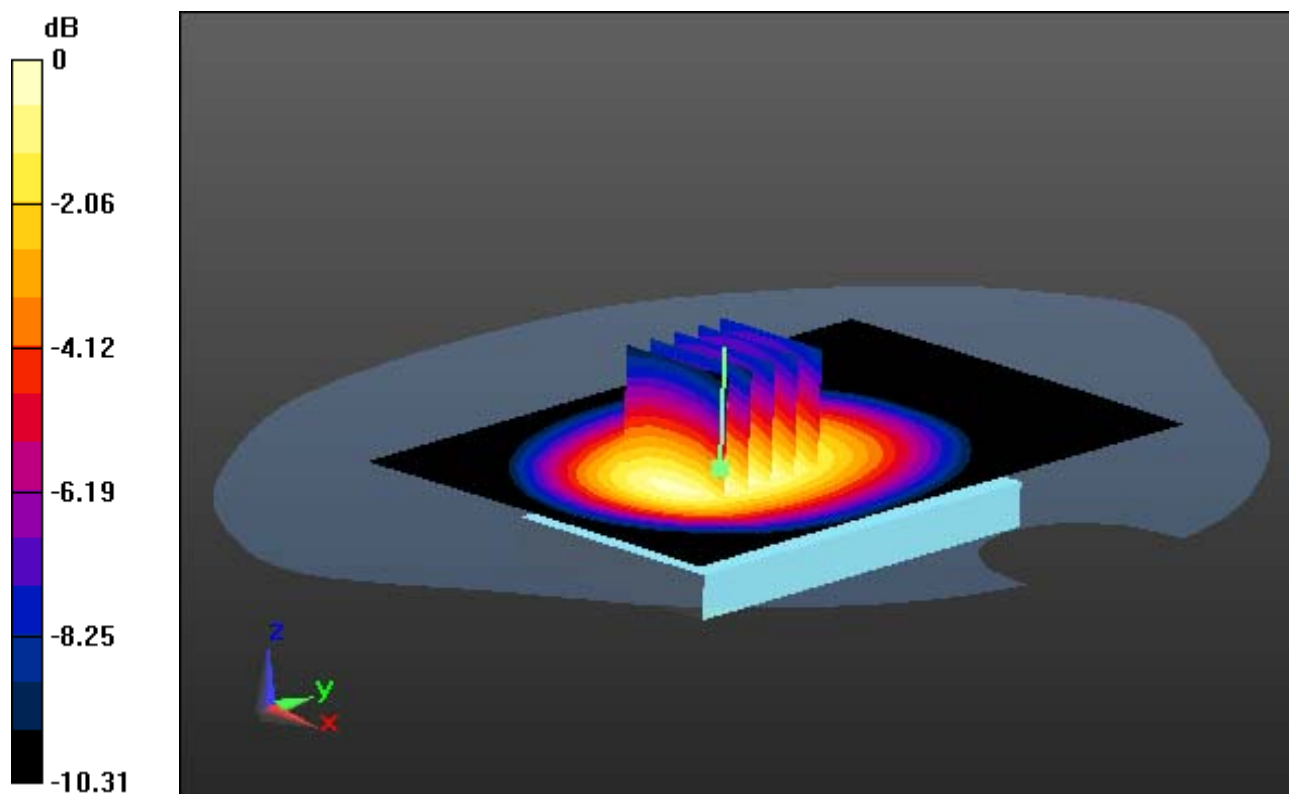
Area Scan (71x111x1): Interpolated grid: dx=15mm, dy=15mm

Zoom Scan (5x5x7)/Cube 0: Measurement grid: dx=8mm, dy=8mm, dz=5mm

Power Drift = -0.15 dB

Peak SAR (extrapolated) = 0.881 W/kg

SAR(1 g) = 0.663 W/kg; SAR(10 g) = 0.478 W/kg



0 dB = 0.787 W/kg

DIGITAL EMC CO., LTD

DUT: LG-D160f; Type: Bar

Communication System: GSM 850 (0); Frequency: 836.6 MHz; Duty Cycle: 1:8.3
Medium parameters used: $f = 836.6$ MHz; $\sigma = 0.979$ S/m; $\epsilon_r = 55.345$; $\rho = 1000$ kg/m³
Phantom section: Flat Section

DASY5 Configuration:

Probe: EX3DV4 - SN3933; ConvF(9.79, 9.79, 9.79); Calibrated: 9/24/2013; Electronics: DAE4 Sn1396
Phantom: SAM with CRP_2013_10_08_middle; Type: QD000P40CD; Serial: TP:1786
Measurement SW: DASY52, Version 52.8 (7); SEMCAD X Version 14.6.10 (7164)

Test Date: 2014-02-25; Ambient Temp: 20.8; Tissue Temp: 21.4

1 cm space from Body, Rear, GSM850 Ch. 190, Ant Internal

With Enlarge plot image

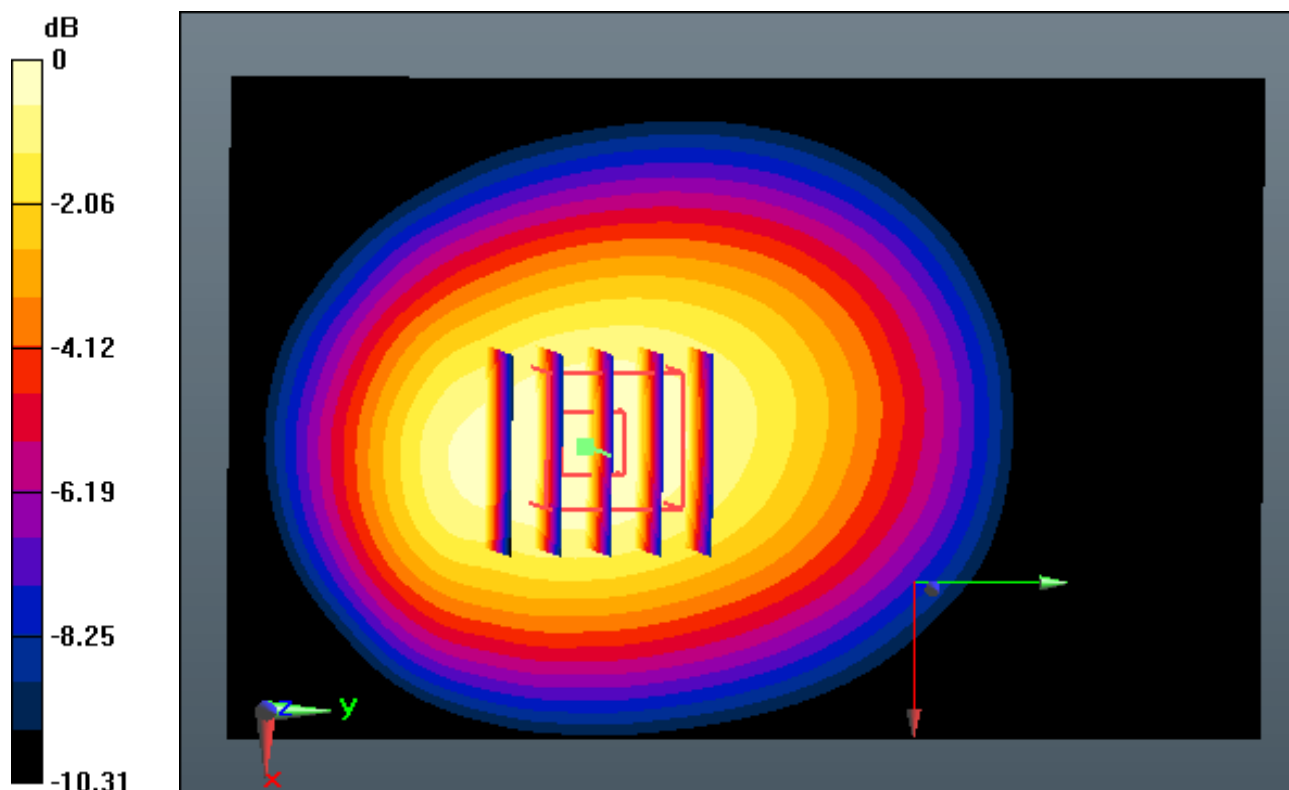
Area Scan (71x111x1): Interpolated grid: dx=15mm, dy=15mm

Zoom Scan (5x5x7)/Cube 0: Measurement grid: dx=8mm, dy=8mm, dz=5mm

Power Drift = -0.15 dB

Peak SAR (extrapolated) = 0.881 W/kg

SAR(1 g) = 0.663 W/kg; SAR(10 g) = 0.478 W/kg



0 dB = 0.787 W/kg

DIGITAL EMC CO., LTD

DUT: LG-D160f; Type: Bar

Communication System: GSM 850 (0); Frequency: 836.6 MHz; Duty Cycle: 1:8.3
Medium parameters used: $f = 836.6$ MHz; $\sigma = 0.979$ S/m; $\epsilon_r = 55.345$; $\rho = 1000$ kg/m³
Phantom section: Flat Section

DASY5 Configuration:

Probe: EX3DV4 - SN3933; ConvF(9.79, 9.79, 9.79); Calibrated: 9/24/2013; Electronics: DAE4 Sn1396
Phantom: SAM with CRP_2013_10_08_middle; Type: QD000P40CD; Serial: TP:1786
Measurement SW: DASY52, Version 52.8 (7); SEMCAD X Version 14.6.10 (7164)

Test Date: 2014-02-25; Ambient Temp: 20.8; Tissue Temp: 21.4

1 cm space from Body, Rear, GSM850 Ch. 190, Ant Internal

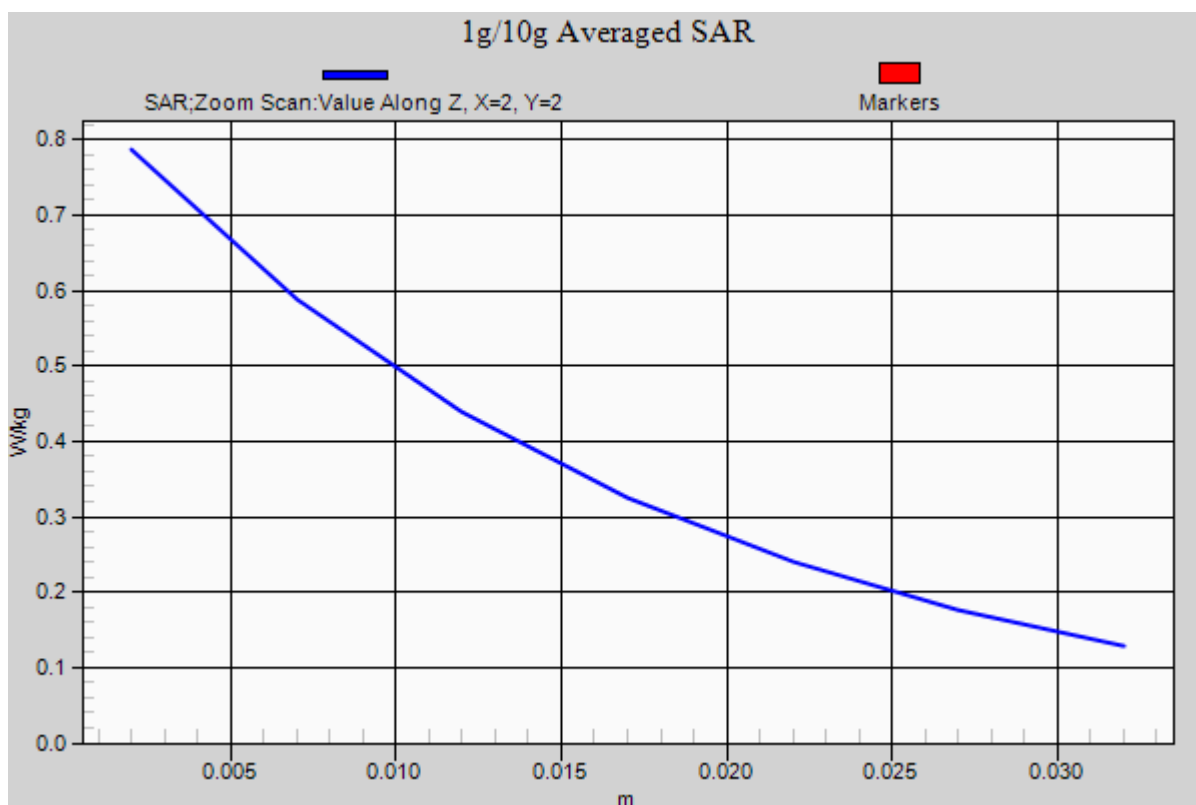
Area Scan (71x111x1): Interpolated grid: dx=15mm, dy=15mm

Zoom Scan (5x5x7)/Cube 0: Measurement grid: dx=8mm, dy=8mm, dz=5mm

Power Drift = -0.15 dB

Peak SAR (extrapolated) = 0.881 W/kg

SAR(1 g) = 0.663 W/kg; SAR(10 g) = 0.478 W/kg



DIGITAL EMC CO., LTD

DUT: LG-D160f; Type: Bar

Communication System: GSM 850_12 (0); Frequency: 824.2 MHz; Duty Cycle: 1:2.075
Medium parameters used: $f = 824.2$ MHz; $\sigma = 0.968$ S/m; $\epsilon_r = 55.424$; $\rho = 1000$ kg/m³
Phantom section: Flat Section

DASY5 Configuration:

Probe: EX3DV4 - SN3933; ConvF(9.79, 9.79, 9.79); Calibrated: 9/24/2013; Electronics: DAE4 Sn1396
Phantom: SAM with CRP_2013_10_08_middle; Type: QD000P40CD; Serial: TP:1786
Measurement SW: DASY52, Version 52.8 (7); SEMCAD X Version 14.6.10 (7164)

Test Date: 2014-02-25; Ambient Temp: 20.8; Tissue Temp: 21.4

1 cm space from Body, Rear, GSM850 GPRS 4 Tx Ch. 128, Ant Internal

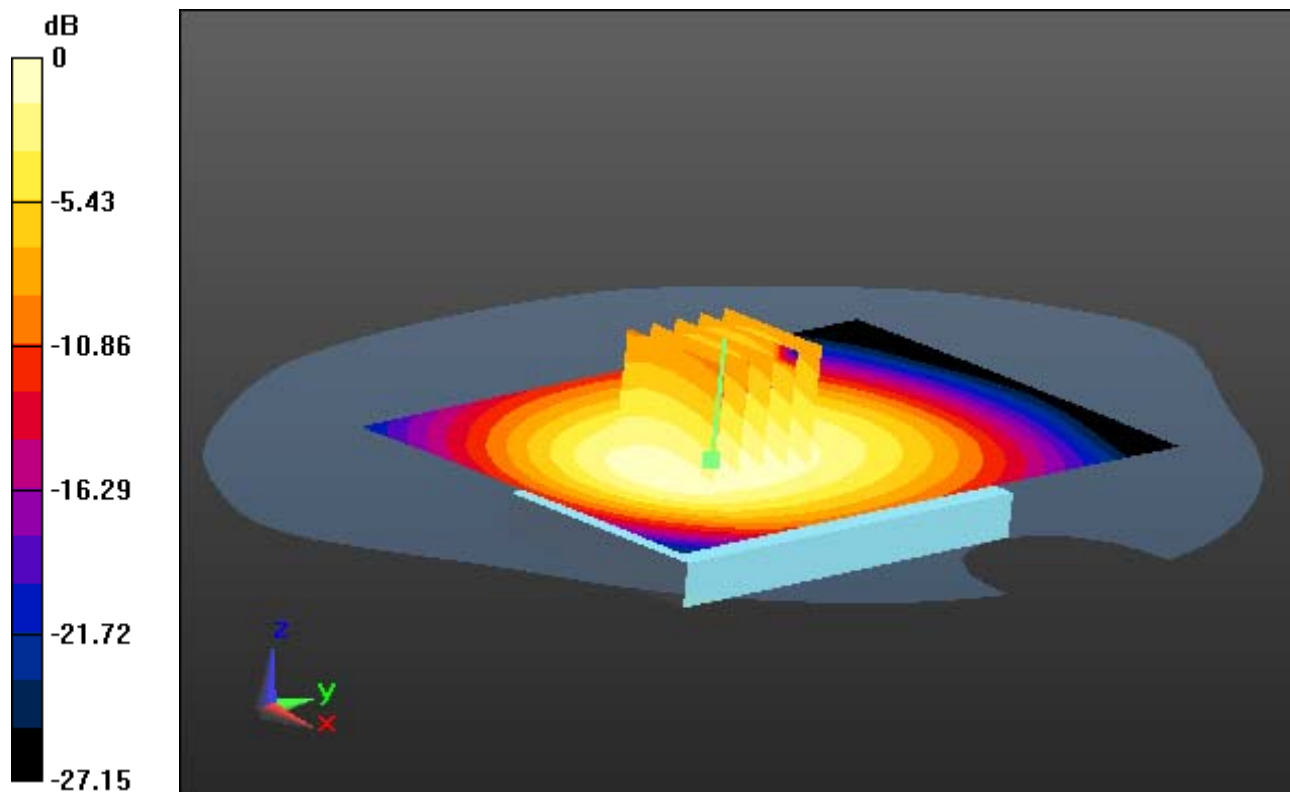
Area Scan (71x111x1): Interpolated grid: dx=15mm, dy=15mm

Zoom Scan (5x5x7)/Cube 0: Measurement grid: dx=8mm, dy=8mm, dz=5mm

Power Drift = -0.05 dB

Peak SAR (extrapolated) = 1.86 W/kg

SAR(1 g) = 0.989 W/kg; SAR(10 g) = 0.713 W/kg



0 dB = 1.16 W/kg

DIGITAL EMC CO., LTD

DUT: LG-D160f; Type: Bar

Communication System: GSM 850_12 (0); Frequency: 824.2 MHz; Duty Cycle: 1:2.075
Medium parameters used: $f = 824.2$ MHz; $\sigma = 0.968$ S/m; $\epsilon_r = 55.424$; $\rho = 1000$ kg/m³
Phantom section: Flat Section

DASY5 Configuration:

Probe: EX3DV4 - SN3933; ConvF(9.79, 9.79, 9.79); Calibrated: 9/24/2013; Electronics: DAE4 Sn1396
Phantom: SAM with CRP_2013_10_08_middle; Type: QD000P40CD; Serial: TP:1786
Measurement SW: DASY52, Version 52.8 (7); SEMCAD X Version 14.6.10 (7164)

Test Date: 2014-02-25; Ambient Temp: 20.8; Tissue Temp: 21.4

1 cm space from Body, Rear, GSM850 GPRS 4 Tx Ch. 128, Ant Internal

With Enlarge plot image

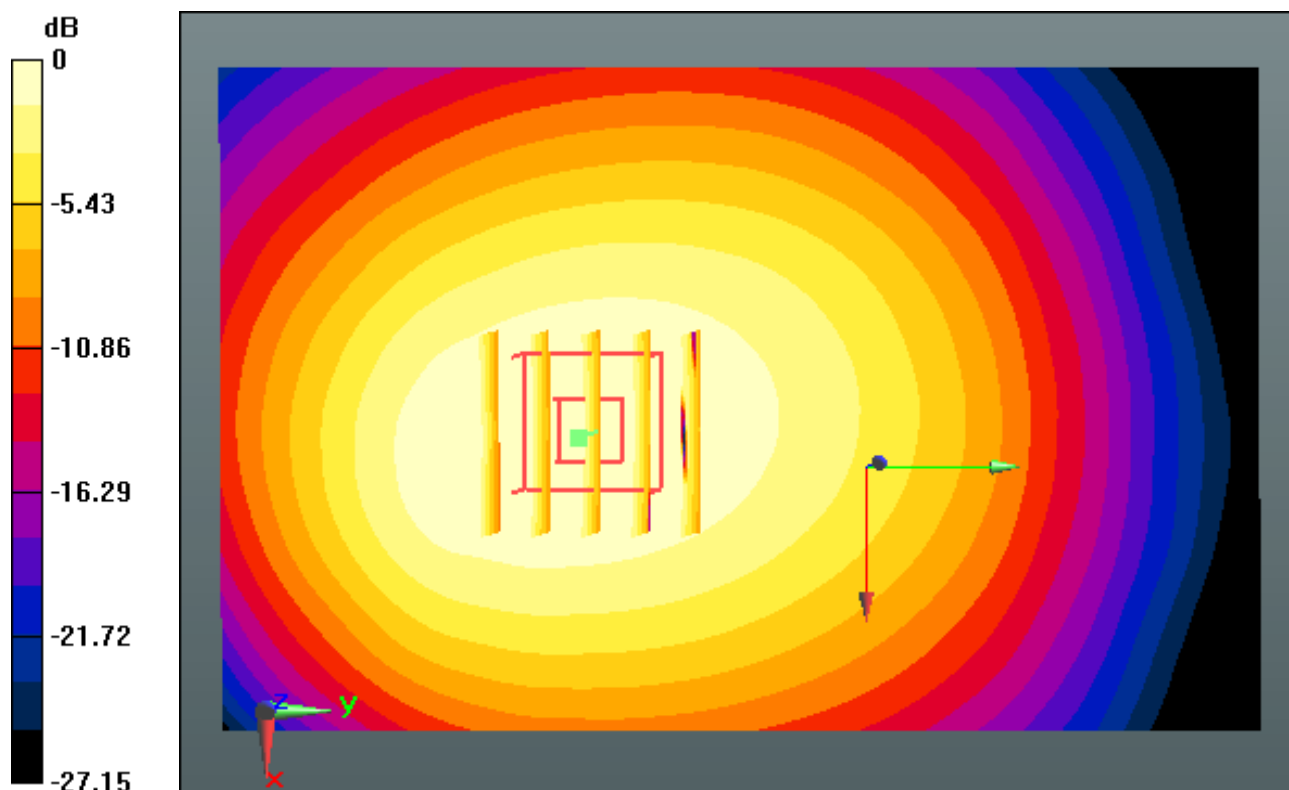
Area Scan (71x111x1): Interpolated grid: dx=15mm, dy=15mm

Zoom Scan (5x5x7)/Cube 0: Measurement grid: dx=8mm, dy=8mm, dz=5mm

Power Drift = -0.05 dB

Peak SAR (extrapolated) = 1.86 W/kg

SAR(1 g) = 0.989 W/kg; SAR(10 g) = 0.713 W/kg



0 dB = 1.16 W/kg

DIGITAL EMC CO., LTD

DUT: LG-D160f; Type: Bar

Communication System: GSM 850_12 (0); Frequency: 824.2 MHz; Duty Cycle: 1:2.075
Medium parameters used: $f = 824.2$ MHz; $\sigma = 0.968$ S/m; $\epsilon_r = 55.424$; $\rho = 1000$ kg/m³
Phantom section: Flat Section

DASY5 Configuration:

Probe: EX3DV4 - SN3933; ConvF(9.79, 9.79, 9.79); Calibrated: 9/24/2013; Electronics: DAE4 Sn1396
Phantom: SAM with CRP_2013_10_08_middle; Type: QD000P40CD; Serial: TP:1786
Measurement SW: DASY52, Version 52.8 (7); SEMCAD X Version 14.6.10 (7164)

Test Date: 2014-02-25; Ambient Temp: 20.8; Tissue Temp: 21.4

1 cm space from Body, Rear, GSM850 GPRS 4 Tx Ch. 128, Ant Internal

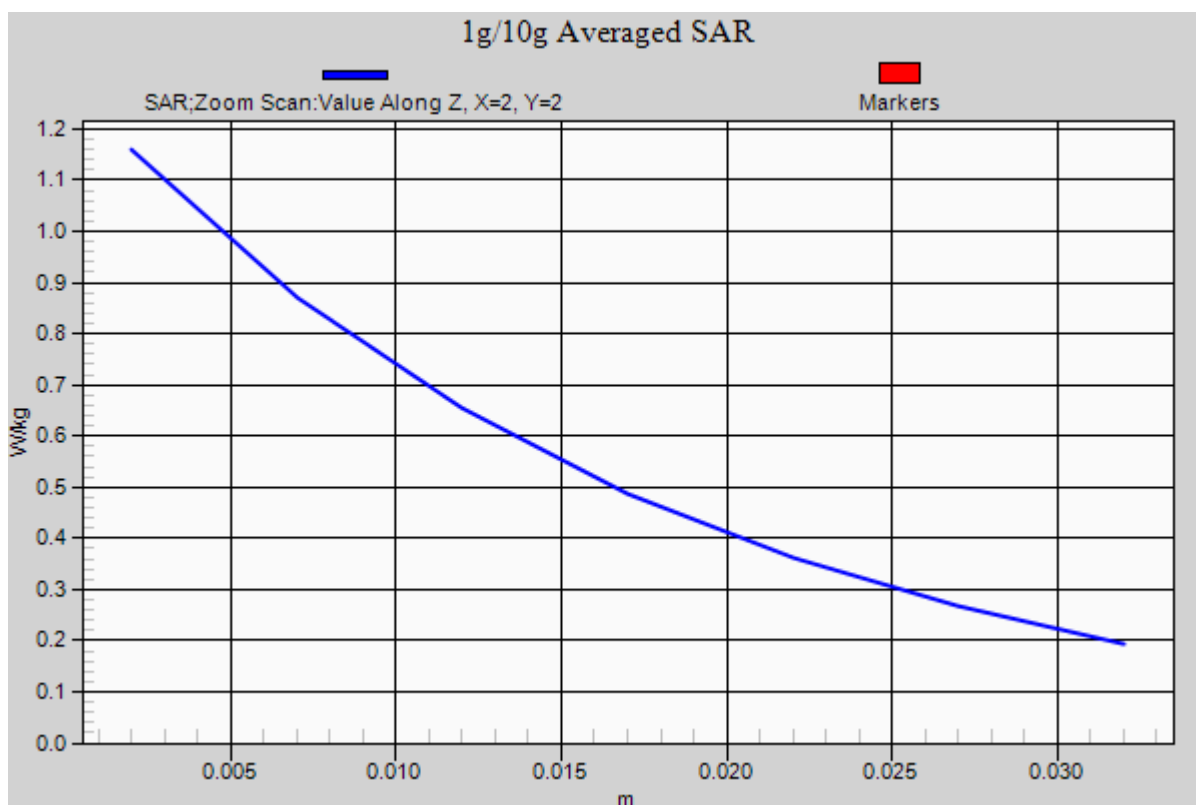
Area Scan (71x111x1): Interpolated grid: dx=15mm, dy=15mm

Zoom Scan (5x5x7)/Cube 0: Measurement grid: dx=8mm, dy=8mm, dz=5mm

Power Drift = -0.05 dB

Peak SAR (extrapolated) = 1.86 W/kg

SAR(1 g) = 0.989 W/kg; SAR(10 g) = 0.713 W/kg



DIGITAL EMC CO., LTD

DUT: LG-D160f; Type: Bar

Communication System: PCS 1900 (0); Frequency: 1880 MHz; Duty Cycle: 1:8.3
Medium parameters used: $f = 1880$ MHz; $\sigma = 1.515$ S/m; $\epsilon_r = 52.202$; $\rho = 1000$ kg/m³
Phantom section: Flat Section

DASY5 Configuration:

Probe: EX3DV4 - SN3933; ConvF(7.79, 7.79, 7.79); Calibrated: 9/24/2013; Electronics: DAE4 Sn1396
Phantom: SAM with CRP_2013_10_08_middle; Type: QD000P40CD; Serial: TP:1786
Measurement SW: DASY52, Version 52.8 (7); SEMCAD X Version 14.6.10 (7164)

Test Date: 2014-02-27; Ambient Temp: 21.1; Tissue Temp: 21.5

1 cm space from Body, Rear, PCS1900 Ch. 661, Ant Internal

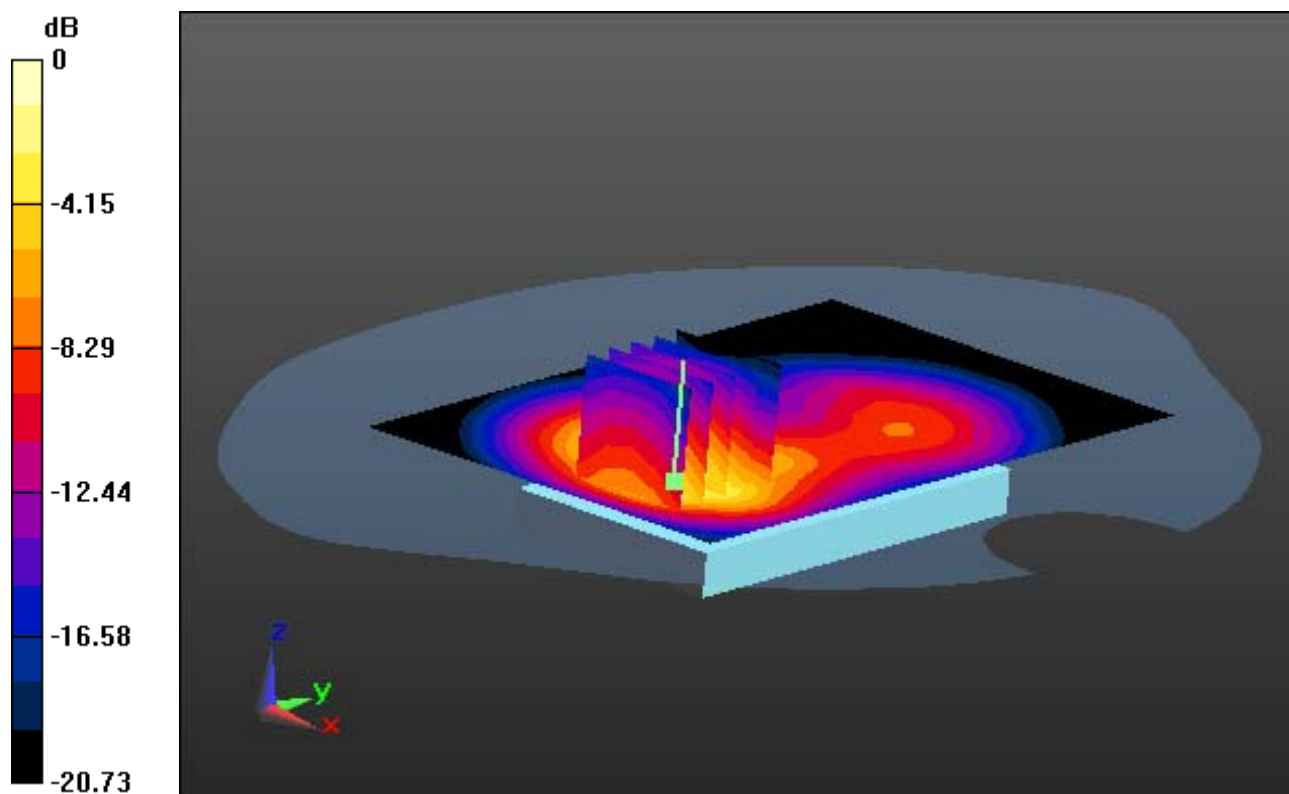
Area Scan (71x111x1): Interpolated grid: dx=15mm, dy=15mm

Zoom Scan (5x5x7)/Cube 0: Measurement grid: dx=8mm, dy=8mm, dz=5mm

Power Drift = -0.02 dB

Peak SAR (extrapolated) = 1.34 W/kg

SAR(1 g) = 0.751 W/kg; SAR(10 g) = 0.364 W/kg



0 dB = 1.08 W/kg

DIGITAL EMC CO., LTD

DUT: LG-D160f; Type: Bar

Communication System: PCS 1900 (0); Frequency: 1880 MHz; Duty Cycle: 1:8.3
Medium parameters used: $f = 1880$ MHz; $\sigma = 1.515$ S/m; $\epsilon_r = 52.202$; $\rho = 1000$ kg/m³
Phantom section: Flat Section

DASY5 Configuration:

Probe: EX3DV4 - SN3933; ConvF(7.79, 7.79, 7.79); Calibrated: 9/24/2013; Electronics: DAE4 Sn1396
Phantom: SAM with CRP_2013_10_08_middle; Type: QD000P40CD; Serial: TP:1786
Measurement SW: DASY52, Version 52.8 (7); SEMCAD X Version 14.6.10 (7164)

Test Date: 2014-02-27; Ambient Temp: 21.1; Tissue Temp: 21.5

1 cm space from Body, Rear, PCS1900 Ch. 661, Ant Internal

With Enlarge plot image

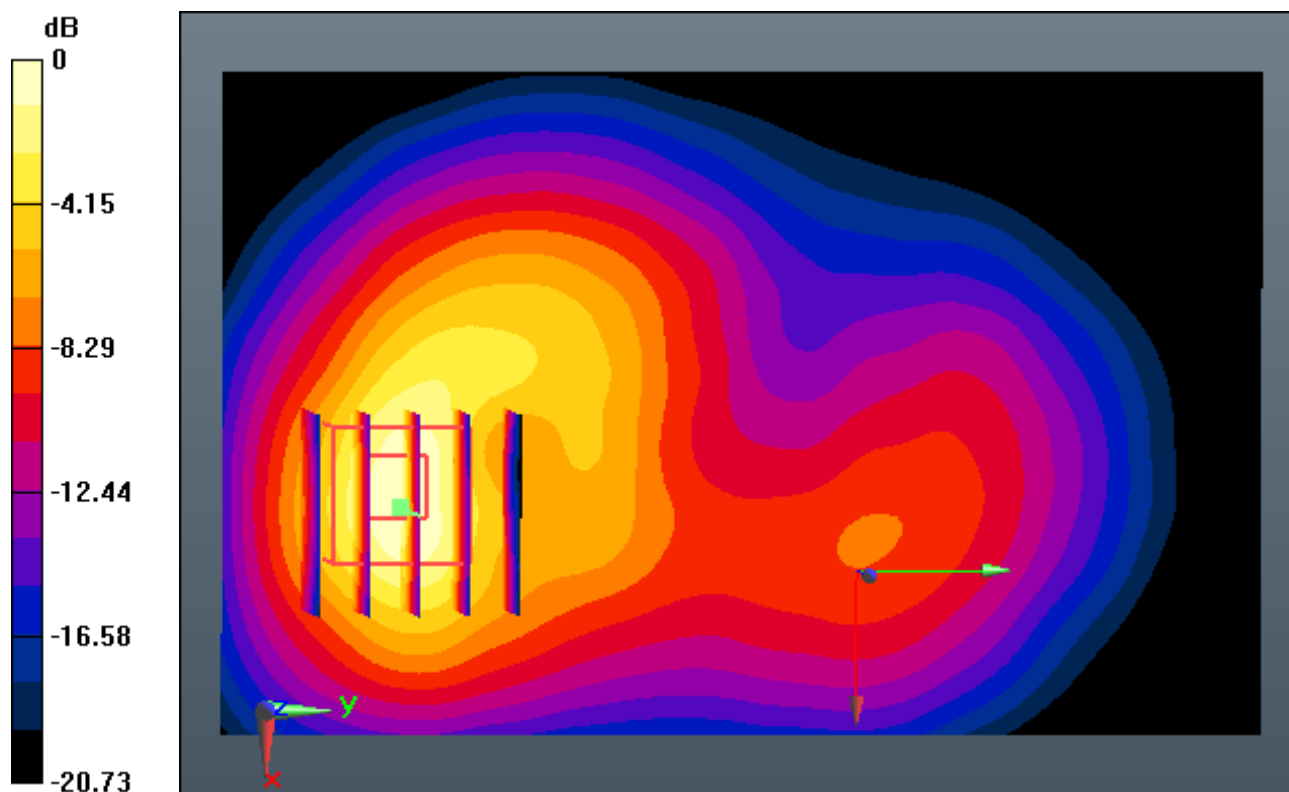
Area Scan (71x111x1): Interpolated grid: dx=15mm, dy=15mm

Zoom Scan (5x5x7)/Cube 0: Measurement grid: dx=8mm, dy=8mm, dz=5mm

Power Drift = -0.02 dB

Peak SAR (extrapolated) = 1.34 W/kg

SAR(1 g) = 0.751 W/kg; SAR(10 g) = 0.364 W/kg



DIGITAL EMC CO., LTD

DUT: LG-D160f; Type: Bar

Communication System: PCS 1900 (0); Frequency: 1880 MHz; Duty Cycle: 1:8.3
Medium parameters used: $f = 1880$ MHz; $\sigma = 1.515$ S/m; $\epsilon_r = 52.202$; $\rho = 1000$ kg/m³
Phantom section: Flat Section

DASY5 Configuration:

Probe: EX3DV4 - SN3933; ConvF(7.79, 7.79, 7.79); Calibrated: 9/24/2013; Electronics: DAE4 Sn1396
Phantom: SAM with CRP_2013_10_08_middle; Type: QD000P40CD; Serial: TP:1786
Measurement SW: DASY52, Version 52.8 (7); SEMCAD X Version 14.6.10 (7164)

Test Date: 2014-02-27; Ambient Temp: 21.1; Tissue Temp: 21.5

1 cm space from Body, Rear, PCS1900 Ch. 661, Ant Internal

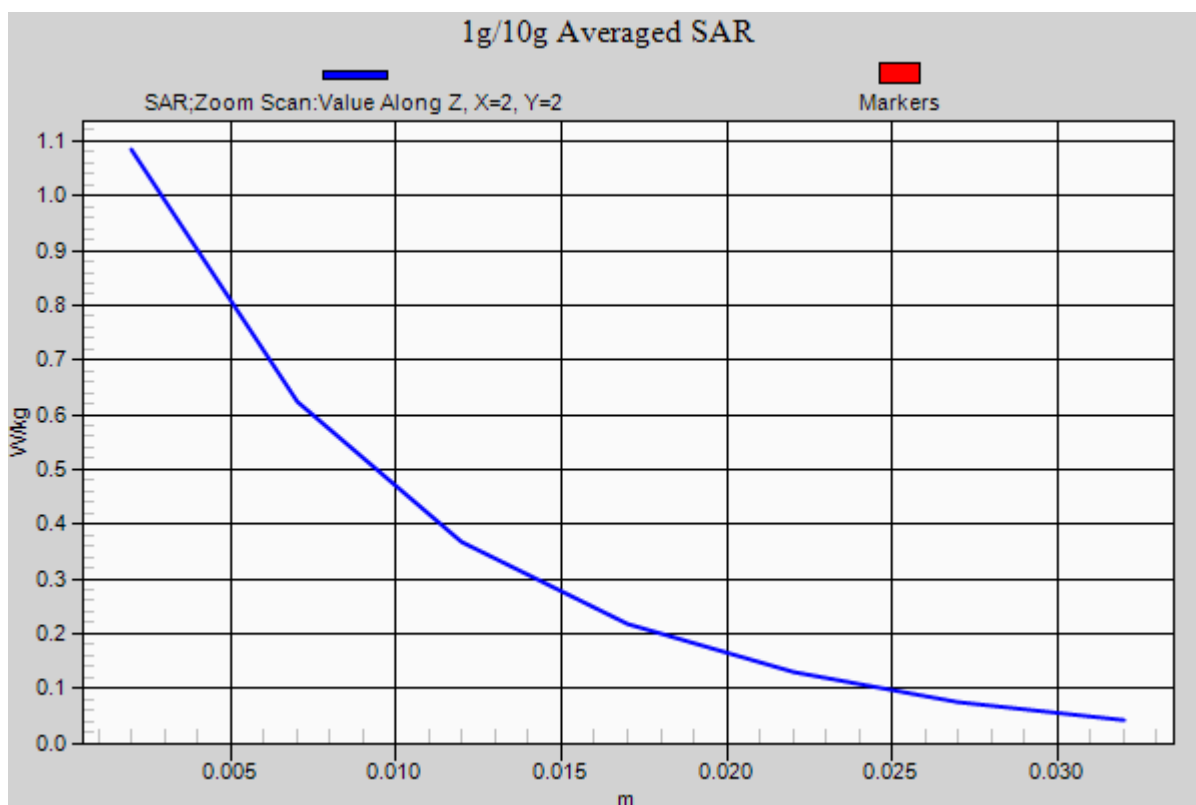
Area Scan (71x111x1): Interpolated grid: dx=15mm, dy=15mm

Zoom Scan (5x5x7)/Cube 0: Measurement grid: dx=8mm, dy=8mm, dz=5mm

Power Drift = -0.02 dB

Peak SAR (extrapolated) = 1.34 W/kg

SAR(1 g) = 0.751 W/kg; SAR(10 g) = 0.364 W/kg



DIGITAL EMC CO., LTD

DUT: LG-D160f; Type: Bar

Communication System: PCS1900_Class 10 (0); Frequency: 1909.8 MHz; Duty Cycle: 1:4.15
Medium parameters used: $f = 1909.8$ MHz; $\sigma = 1.534$ S/m; $\epsilon_r = 52.055$; $\rho = 1000$ kg/m³
Phantom section: Flat Section

DASY5 Configuration:

Probe: EX3DV4 - SN3933; ConvF(7.79, 7.79, 7.79); Calibrated: 9/24/2013; Electronics: DAE4 Sn1396
Phantom: SAM with CRP_2013_10_08_middle; Type: QD000P40CD; Serial: TP:1786
Measurement SW: DASY52, Version 52.8 (7); SEMCAD X Version 14.6.10 (7164)

Test Date: 2014-02-27; Ambient Temp: 21.1; Tissue Temp: 21.5

1 cm space from Body, Rear, PCS1900 GPRS 2 Tx Ch. 810, Ant Internal

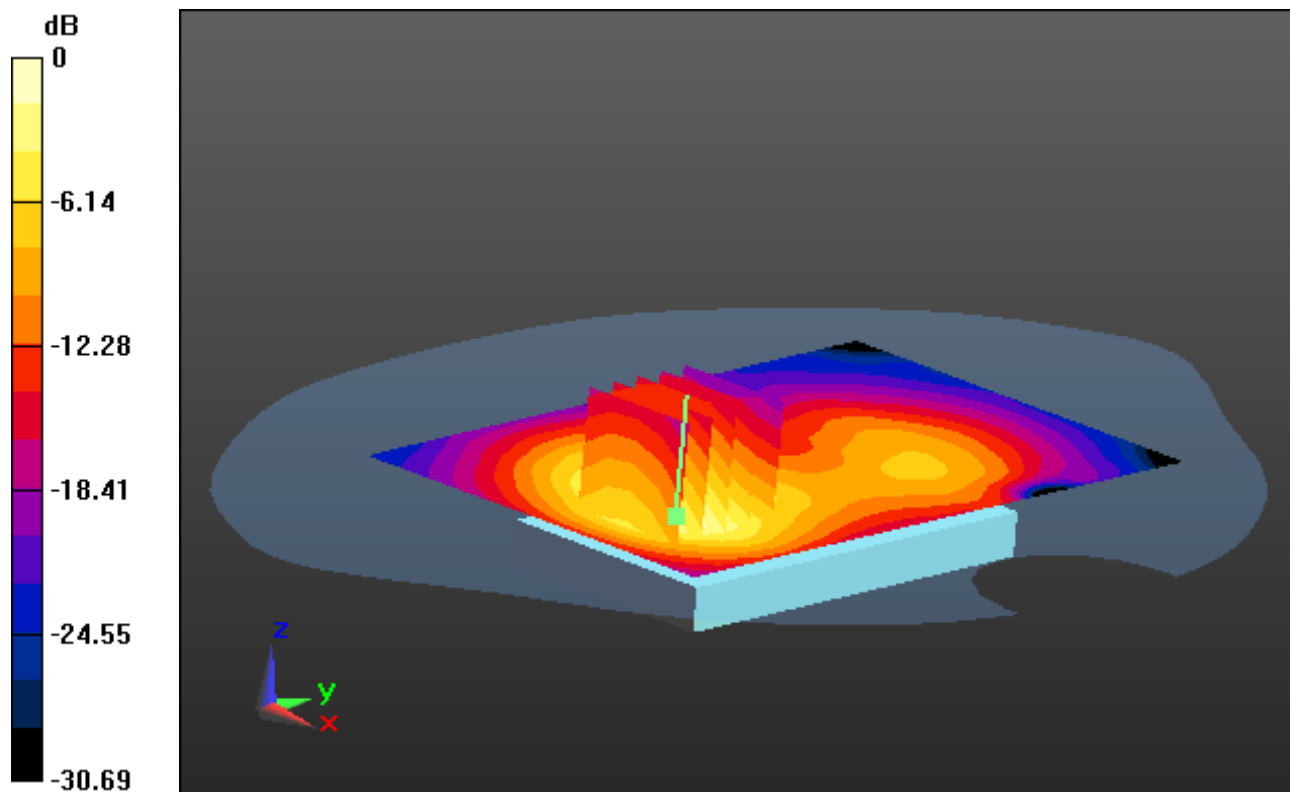
Area Scan (71x111x1): Interpolated grid: dx=15mm, dy=15mm

Zoom Scan (5x5x7)/Cube 0: Measurement grid: dx=8mm, dy=8mm, dz=5mm

Power Drift = 0.04 dB

Peak SAR (extrapolated) = 1.67 W/kg

SAR(1 g) = 0.946 W/kg; SAR(10 g) = 0.470 W/kg



0 dB = 1.30 W/kg

DIGITAL EMC CO., LTD

DUT: LG-D160f; Type: Bar

Communication System: PCS1900_Class 10 (0); Frequency: 1909.8 MHz; Duty Cycle: 1:4.15
Medium parameters used: $f = 1909.8$ MHz; $\sigma = 1.534$ S/m; $\epsilon_r = 52.055$; $\rho = 1000$ kg/m³
Phantom section: Flat Section

DASY5 Configuration:

Probe: EX3DV4 - SN3933; ConvF(7.79, 7.79, 7.79); Calibrated: 9/24/2013; Electronics: DAE4 Sn1396
Phantom: SAM with CRP_2013_10_08_middle; Type: QD000P40CD; Serial: TP:1786
Measurement SW: DASY52, Version 52.8 (7); SEMCAD X Version 14.6.10 (7164)

Test Date: 2014-02-27; Ambient Temp: 21.1; Tissue Temp: 21.5

1 cm space from Body, Rear, PCS1900 GPRS 2 Tx Ch. 810, Ant Internal

With Enlarge plot image

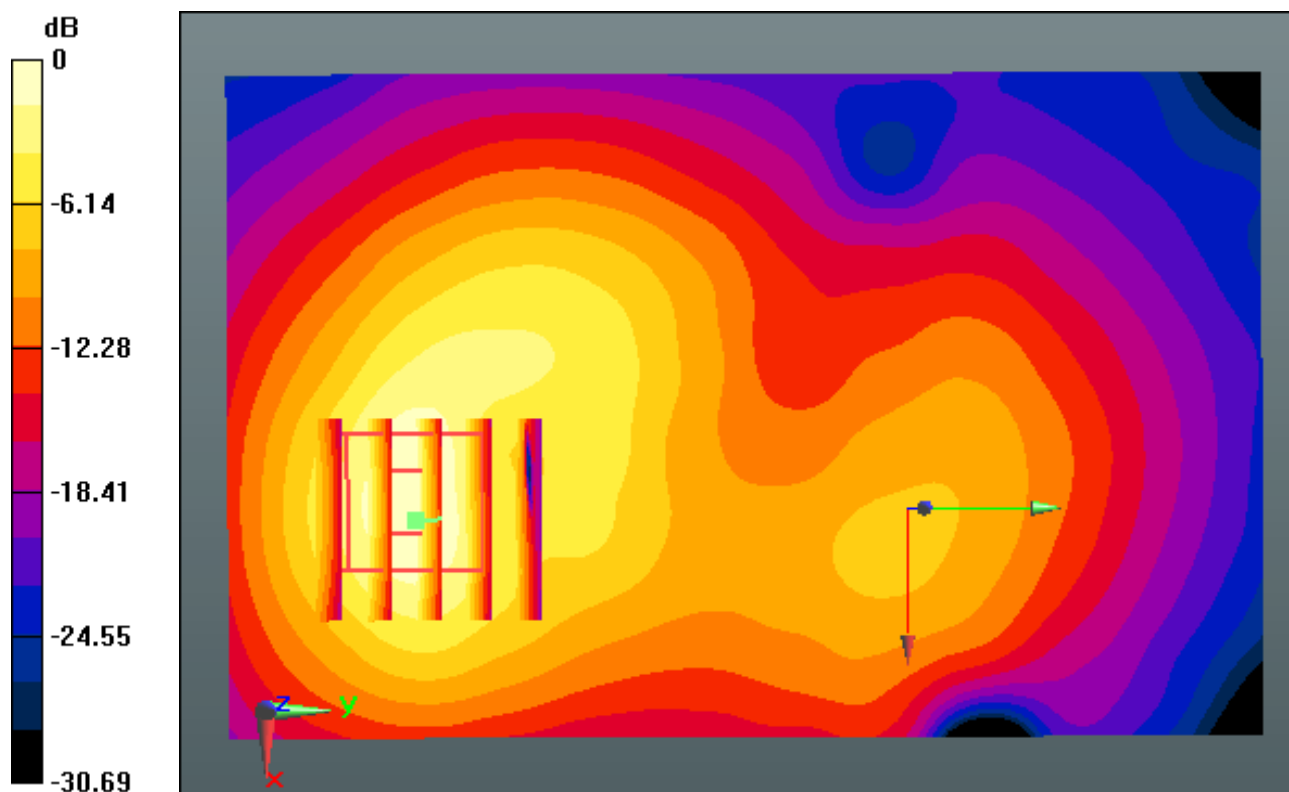
Area Scan (71x111x1): Interpolated grid: dx=15mm, dy=15mm

Zoom Scan (5x5x7)/Cube 0: Measurement grid: dx=8mm, dy=8mm, dz=5mm

Power Drift = 0.04 dB

Peak SAR (extrapolated) = 1.67 W/kg

SAR(1 g) = 0.946 W/kg; SAR(10 g) = 0.470 W/kg



0 dB = 1.30 W/kg

DIGITAL EMC CO., LTD

DUT: LG-D160f; Type: Bar

Communication System: PCS1900_Class 10 (0); Frequency: 1909.8 MHz; Duty Cycle: 1:4.15
Medium parameters used: $f = 1909.8$ MHz; $\sigma = 1.534$ S/m; $\epsilon_r = 52.055$; $\rho = 1000$ kg/m³
Phantom section: Flat Section

DASY5 Configuration:

Probe: EX3DV4 - SN3933; ConvF(7.79, 7.79, 7.79); Calibrated: 9/24/2013; Electronics: DAE4 Sn1396
Phantom: SAM with CRP_2013_10_08_middle; Type: QD000P40CD; Serial: TP:1786
Measurement SW: DASY52, Version 52.8 (7); SEMCAD X Version 14.6.10 (7164)

Test Date: 2014-02-27; Ambient Temp: 21.1; Tissue Temp: 21.5

1 cm space from Body, Rear, PCS1900 GPRS 2 Tx Ch. 810, Ant Internal

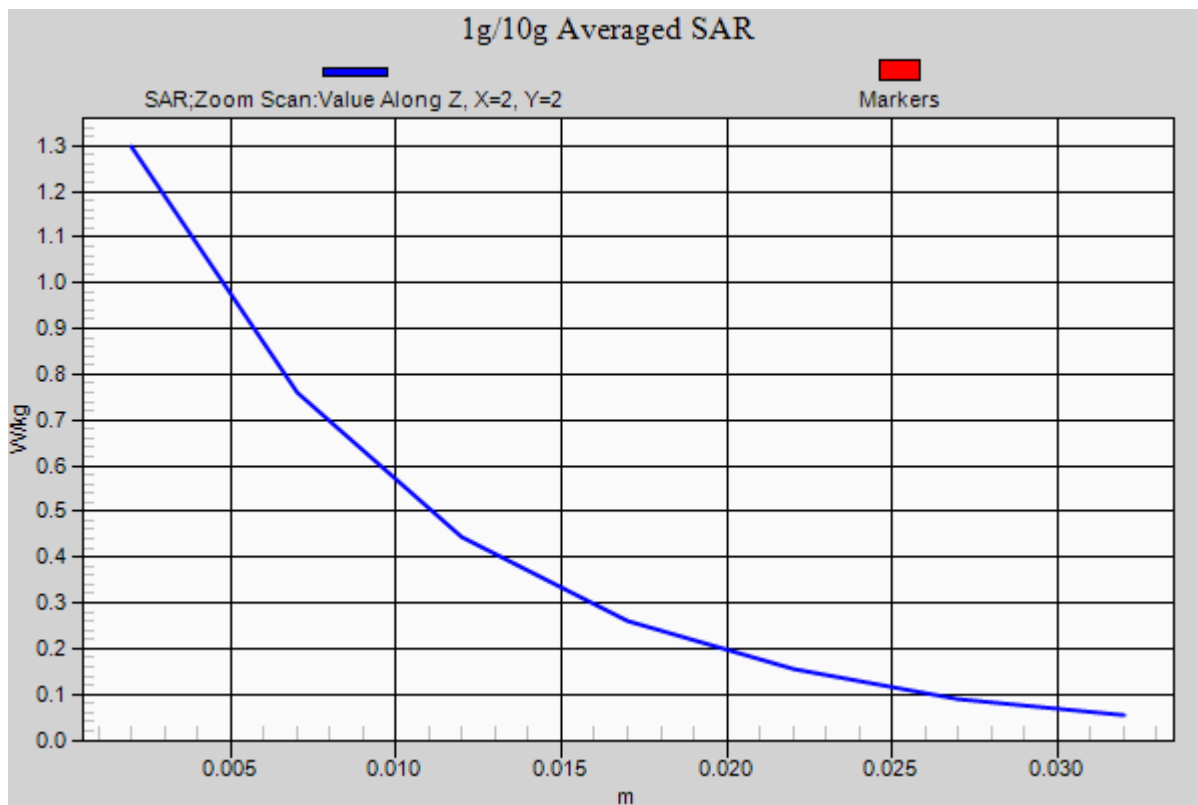
Area Scan (71x111x1): Interpolated grid: dx=15mm, dy=15mm

Zoom Scan (5x5x7)/Cube 0: Measurement grid: dx=8mm, dy=8mm, dz=5mm

Power Drift = 0.04 dB

Peak SAR (extrapolated) = 1.67 W/kg

SAR(1 g) = 0.946 W/kg; SAR(10 g) = 0.470 W/kg



DIGITAL EMC CO., LTD

DUT: LG-D160f; Type: Bar

Communication System: WCDMA 850 (0); Frequency: 826.4 MHz; Duty Cycle: 1:1
Medium parameters used: $f = 826.4$ MHz; $\sigma = 0.984$ S/m; $\epsilon_r = 55.902$; $\rho = 1000$ kg/m³
Phantom section: Flat Section

DASY5 Configuration:

Probe: EX3DV4 - SN3933; ConvF(9.79, 9.79, 9.79); Calibrated: 9/24/2013; Electronics: DAE4 Sn1396
Phantom: SAM with CRP_2013_10_08_middle; Type: QD000P40CD; Serial: TP:1786
Measurement SW: DASY52, Version 52.8 (7); SEMCAD X Version 14.6.10 (7164)

Test Date: 2014-02-28; Ambient Temp: 21.2; Tissue Temp: 21.7

1 cm space from Body, Rear, WCDMA850 Ch. 4132, Ant Internal

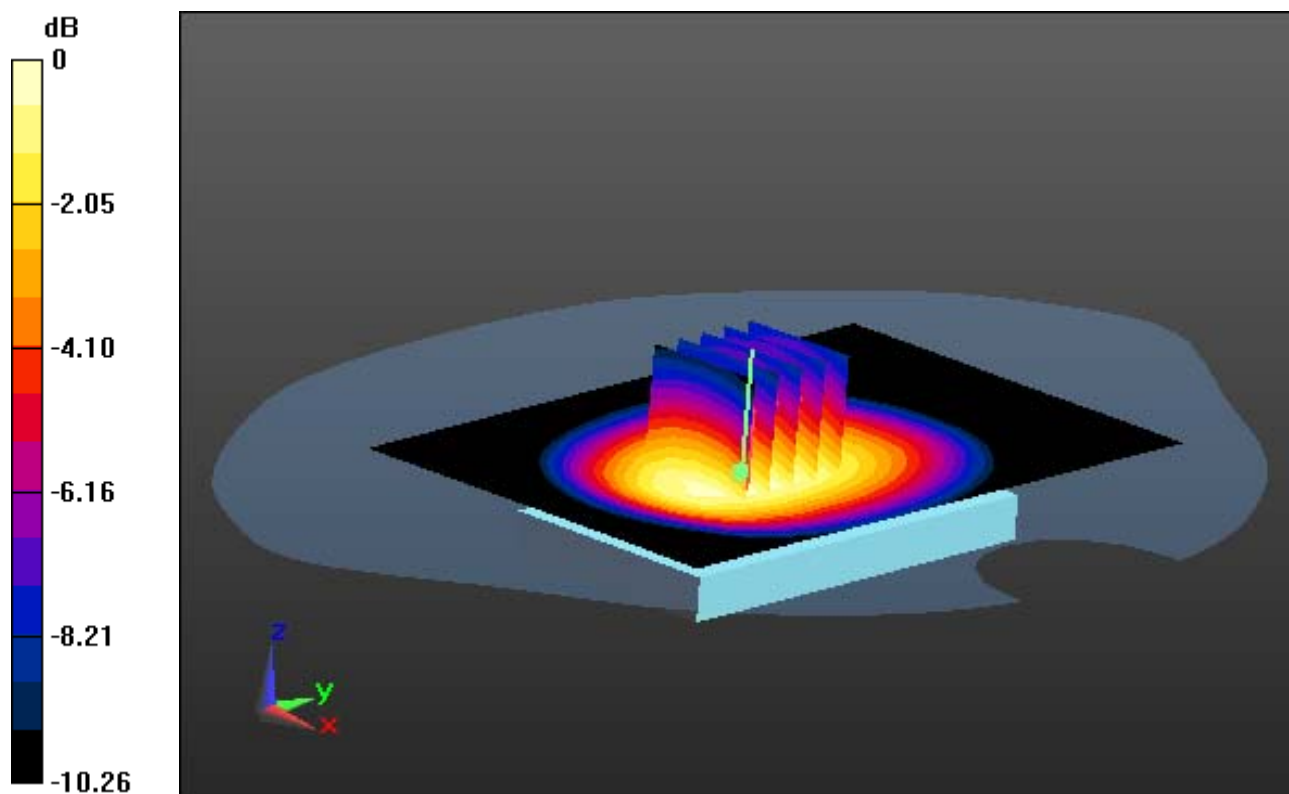
Area Scan (71x111x1): Interpolated grid: dx=15mm, dy=15mm

Zoom Scan (5x5x7)/Cube 0: Measurement grid: dx=8mm, dy=8mm, dz=5mm

Power Drift = -0.06 dB

Peak SAR (extrapolated) = 1.18 W/kg

SAR(1 g) = 0.880 W/kg; SAR(10 g) = 0.635 W/kg



0 dB = 1.05 W/kg

DIGITAL EMC CO., LTD

DUT: LG-D160f; Type: Bar

Communication System: WCDMA 850 (0); Frequency: 826.4 MHz; Duty Cycle: 1:1
Medium parameters used: $f = 826.4$ MHz; $\sigma = 0.984$ S/m; $\epsilon_r = 55.902$; $\rho = 1000$ kg/m³
Phantom section: Flat Section

DASY5 Configuration:

Probe: EX3DV4 - SN3933; ConvF(9.79, 9.79, 9.79); Calibrated: 9/24/2013; Electronics: DAE4 Sn1396
Phantom: SAM with CRP_2013_10_08_middle; Type: QD000P40CD; Serial: TP:1786
Measurement SW: DASY52, Version 52.8 (7); SEMCAD X Version 14.6.10 (7164)

Test Date: 2014-02-28; Ambient Temp: 21.2; Tissue Temp: 21.7

1 cm space from Body, Rear, WCDMA850 Ch. 4132, Ant Internal

With Enlarge plot image

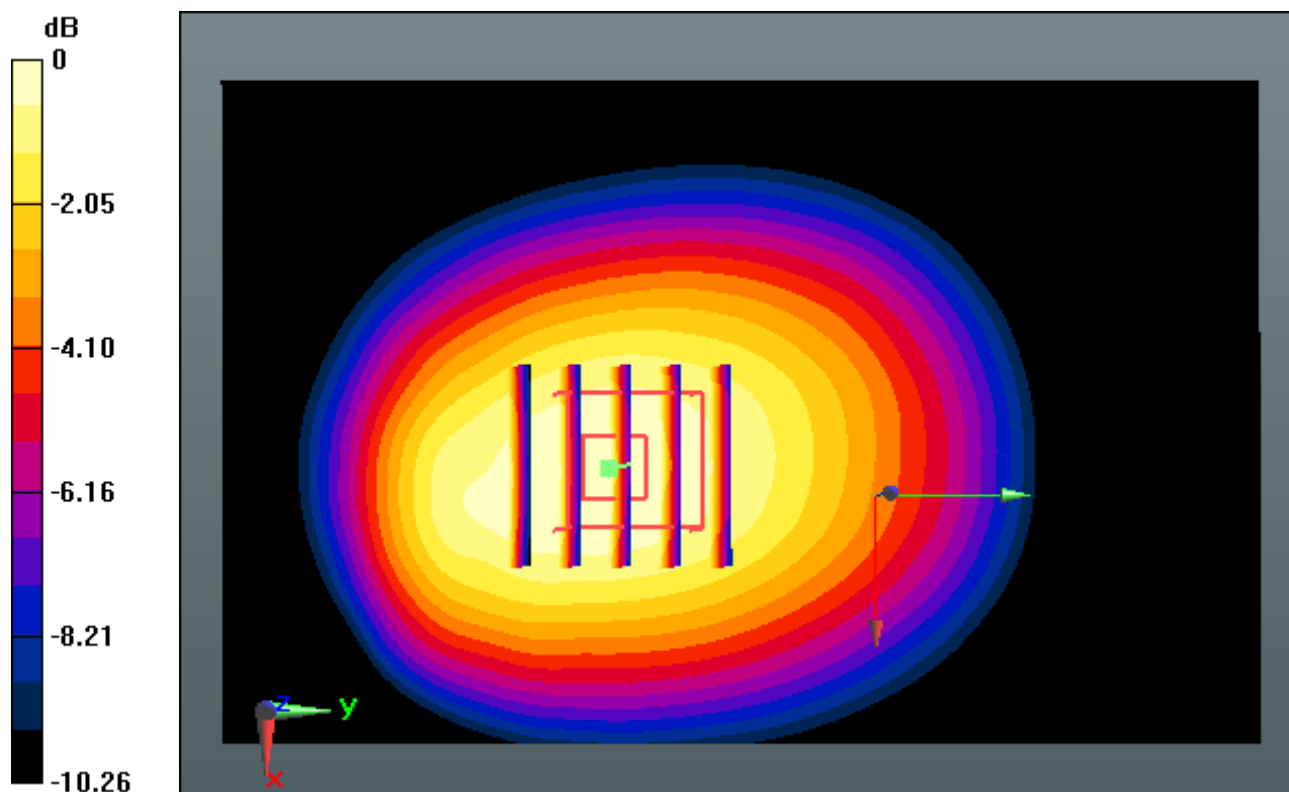
Area Scan (71x111x1): Interpolated grid: dx=15mm, dy=15mm

Zoom Scan (5x5x7)/Cube 0: Measurement grid: dx=8mm, dy=8mm, dz=5mm

Power Drift = -0.06 dB

Peak SAR (extrapolated) = 1.18 W/kg

SAR(1 g) = 0.880 W/kg; SAR(10 g) = 0.635 W/kg



0 dB = 1.05 W/kg

DIGITAL EMC CO., LTD

DUT: LG-D160f; Type: Bar

Communication System: WCDMA 850 (0); Frequency: 826.4 MHz; Duty Cycle: 1:1
Medium parameters used: $f = 826.4$ MHz; $\sigma = 0.984$ S/m; $\epsilon_r = 55.902$; $\rho = 1000$ kg/m³
Phantom section: Flat Section

DASY5 Configuration:

Probe: EX3DV4 - SN3933; ConvF(9.79, 9.79, 9.79); Calibrated: 9/24/2013; Electronics: DAE4 Sn1396
Phantom: SAM with CRP_2013_10_08_middle; Type: QD000P40CD; Serial: TP:1786
Measurement SW: DASY52, Version 52.8 (7); SEMCAD X Version 14.6.10 (7164)

Test Date: 2014-02-28; Ambient Temp: 21.2; Tissue Temp: 21.7

1 cm space from Body, Rear, WCDMA850 Ch. 4132, Ant Internal

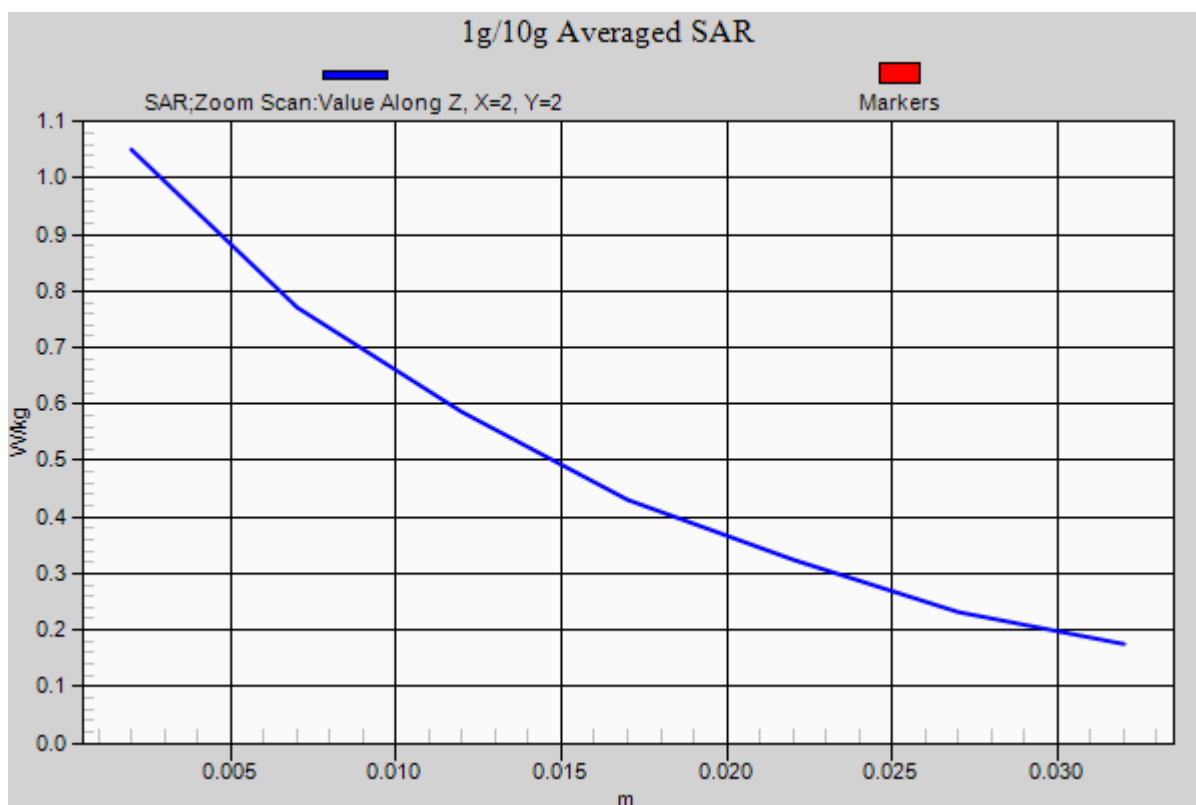
Area Scan (71x111x1): Interpolated grid: dx=15mm, dy=15mm

Zoom Scan (5x5x7)/Cube 0: Measurement grid: dx=8mm, dy=8mm, dz=5mm

Power Drift = -0.06 dB

Peak SAR (extrapolated) = 1.18 W/kg

SAR(1 g) = 0.880 W/kg; SAR(10 g) = 0.635 W/kg



DIGITAL EMC CO., LTD

DUT: LG-D160f; Type: Bar

Communication System: W-LAN (0); Frequency: 2412 MHz; Duty Cycle: 1:1
Medium parameters used: $f = 2412$ MHz; $\sigma = 1.928$ S/m; $\epsilon_r = 51.496$; $\rho = 1000$ kg/m³
Phantom section: Flat Section

DASY5 Configuration:

Probe: EX3DV4 - SN3933; ConvF(7.36, 7.36, 7.36); Calibrated: 9/24/2013; Electronics: DAE4 Sn1396
Phantom: SAM with CRP_2013_10_08_middle; Type: QD000P40CD; Serial: TP:1786
Measurement SW: DASY52, Version 52.8 (7); SEMCAD X Version 14.6.10 (7164)

Test Date: 2014-02-21; Ambient Temp: 21.2; Tissue Temp: 21.6

1 cm space from Body, Rear, W-LAN(802.11b) Ch. 1, Ant Internal

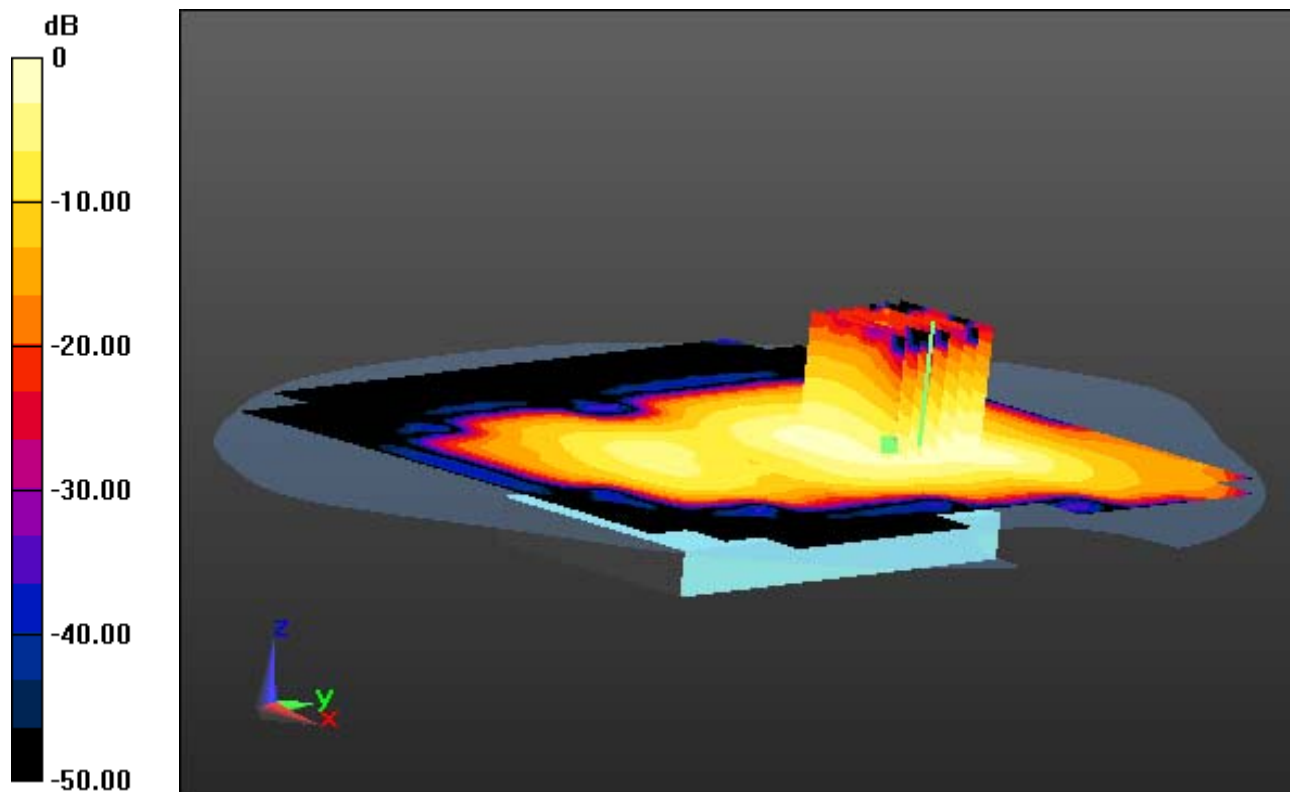
Area Scan (141x161x1): Interpolated grid: dx=12mm, dy=12mm

Zoom Scan (7x7x7)/Cube 0: Measurement grid: dx=5mm, dy=5mm, dz=5mm

Power Drift = -0.01 dB

Peak SAR (extrapolated) = 0.237 W/kg

SAR(1 g) = 0.126 W/kg; SAR(10 g) = 0.066 W/kg



0 dB = 0.178 W/kg

DIGITAL EMC CO., LTD

DUT: LG-D160f; Type: Bar

Communication System: W-LAN (0); Frequency: 2412 MHz; Duty Cycle: 1:1
Medium parameters used: $f = 2412$ MHz; $\sigma = 1.928$ S/m; $\epsilon_r = 51.496$; $\rho = 1000$ kg/m³
Phantom section: Flat Section

DASY5 Configuration:

Probe: EX3DV4 - SN3933; ConvF(7.36, 7.36, 7.36); Calibrated: 9/24/2013; Electronics: DAE4 Sn1396
Phantom: SAM with CRP_2013_10_08_middle; Type: QD000P40CD; Serial: TP:1786
Measurement SW: DASY52, Version 52.8 (7); SEMCAD X Version 14.6.10 (7164)

Test Date: 2014-02-21; Ambient Temp: 21.2; Tissue Temp: 21.6

1 cm space from Body, Rear, W-LAN(802.11b) Ch. 1, Ant Internal

With Enlarge plot image

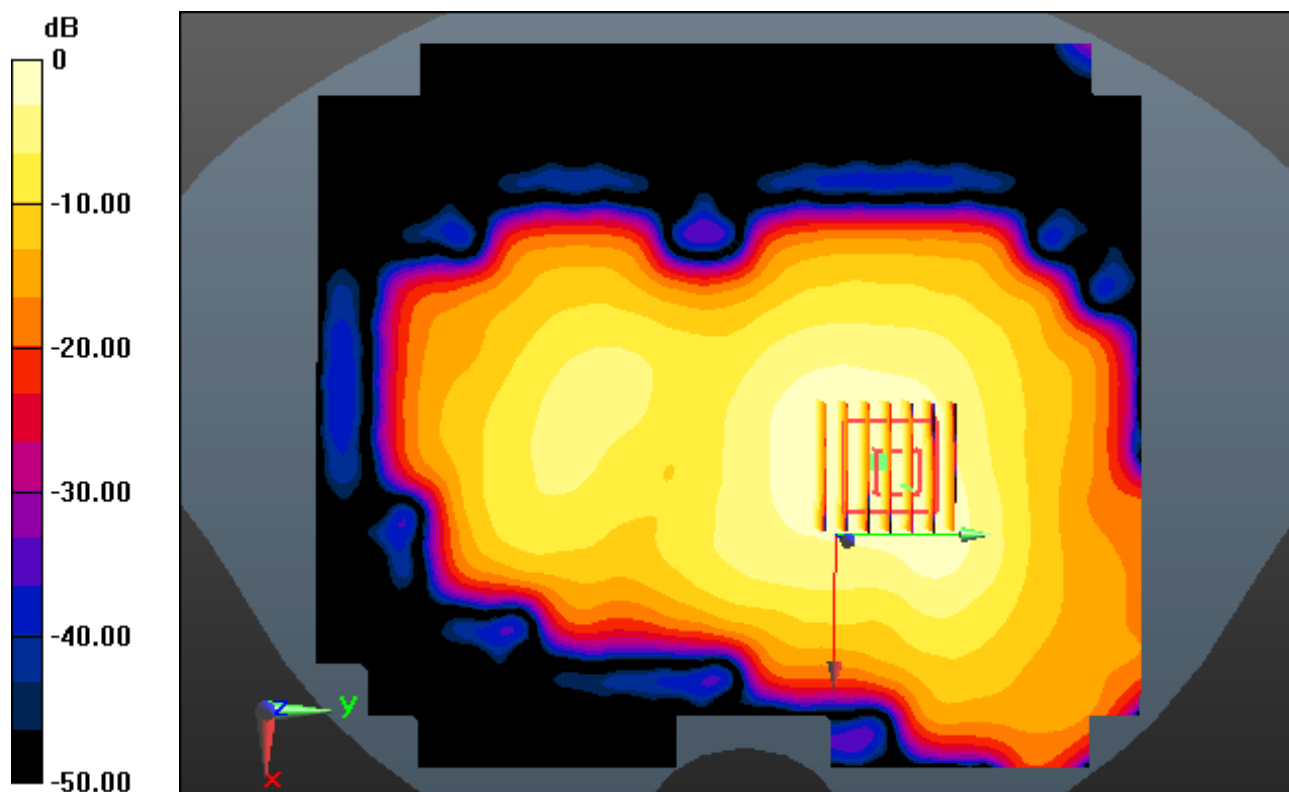
Area Scan (141x161x1): Interpolated grid: dx=12mm, dy=12mm

Zoom Scan (7x7x7)/Cube 0: Measurement grid: dx=5mm, dy=5mm, dz=5mm

Power Drift = -0.01 dB

Peak SAR (extrapolated) = 0.237 W/kg

SAR(1 g) = 0.126 W/kg; SAR(10 g) = 0.066 W/kg



0 dB = 0.178 W/kg

DIGITAL EMC CO., LTD

DUT: LG-D160f; Type: Bar

Communication System: W-LAN (0); Frequency: 2412 MHz; Duty Cycle: 1:1
Medium parameters used: $f = 2412$ MHz; $\sigma = 1.928$ S/m; $\epsilon_r = 51.496$; $\rho = 1000$ kg/m³
Phantom section: Flat Section

DASY5 Configuration:

Probe: EX3DV4 - SN3933; ConvF(7.36, 7.36, 7.36); Calibrated: 9/24/2013; Electronics: DAE4 Sn1396
Phantom: SAM with CRP_2013_10_08_middle; Type: QD000P40CD; Serial: TP:1786
Measurement SW: DASY52, Version 52.8 (7); SEMCAD X Version 14.6.10 (7164)

Test Date: 2014-02-21; Ambient Temp: 21.2; Tissue Temp: 21.6

1 cm space from Body, Rear, W-LAN(802.11b) Ch. 1, Ant Internal

Area Scan (141x161x1): Interpolated grid: dx=12mm, dy=12mm

Zoom Scan (7x7x7)/Cube 0: Measurement grid: dx=5mm, dy=5mm, dz=5mm

Power Drift = -0.01 dB

Peak SAR (extrapolated) = 0.237 W/kg

SAR(1 g) = 0.126 W/kg; SAR(10 g) = 0.066 W/kg

