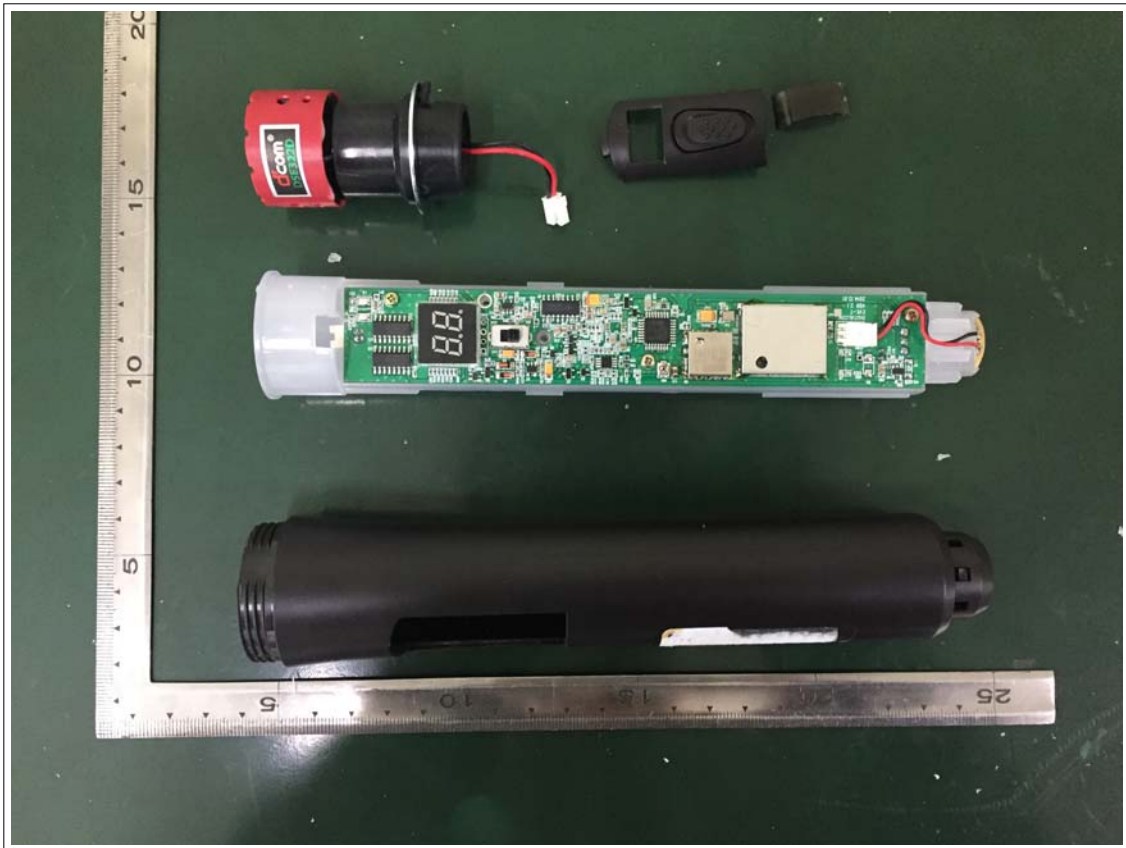


Interior view of EUT

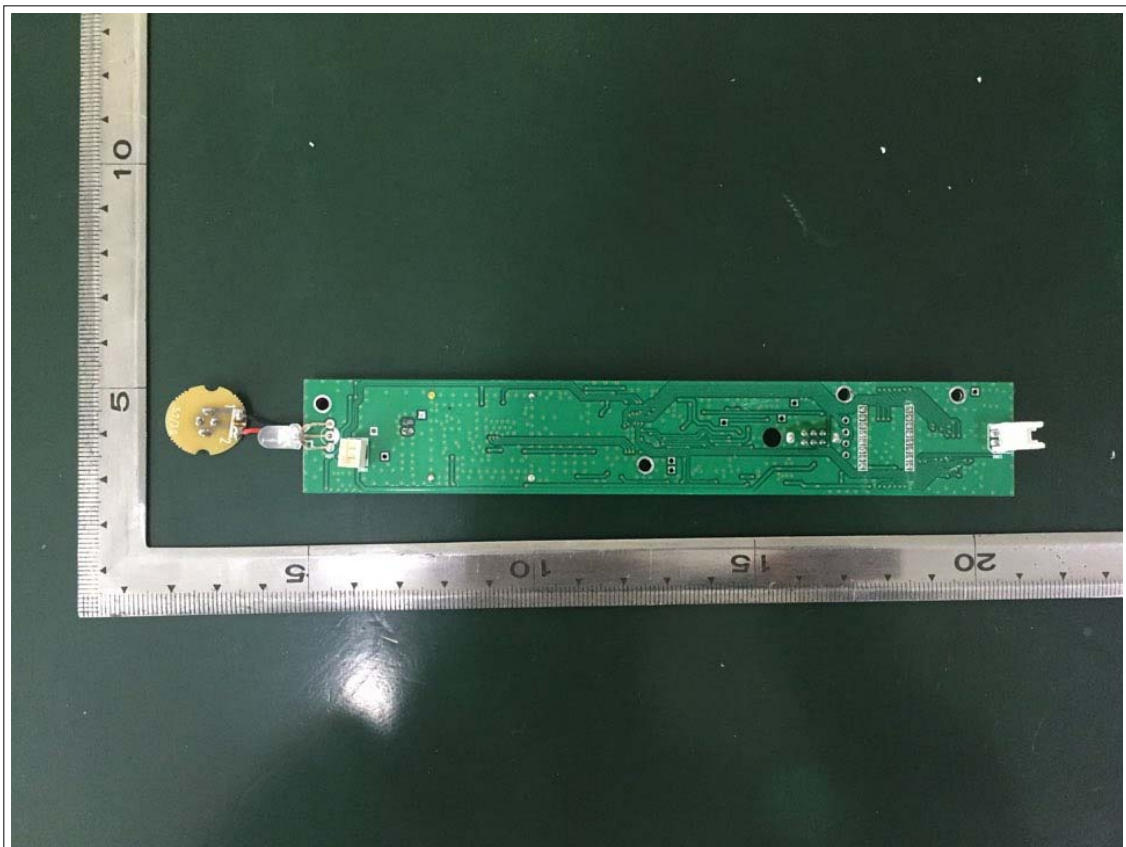
Internal Photos



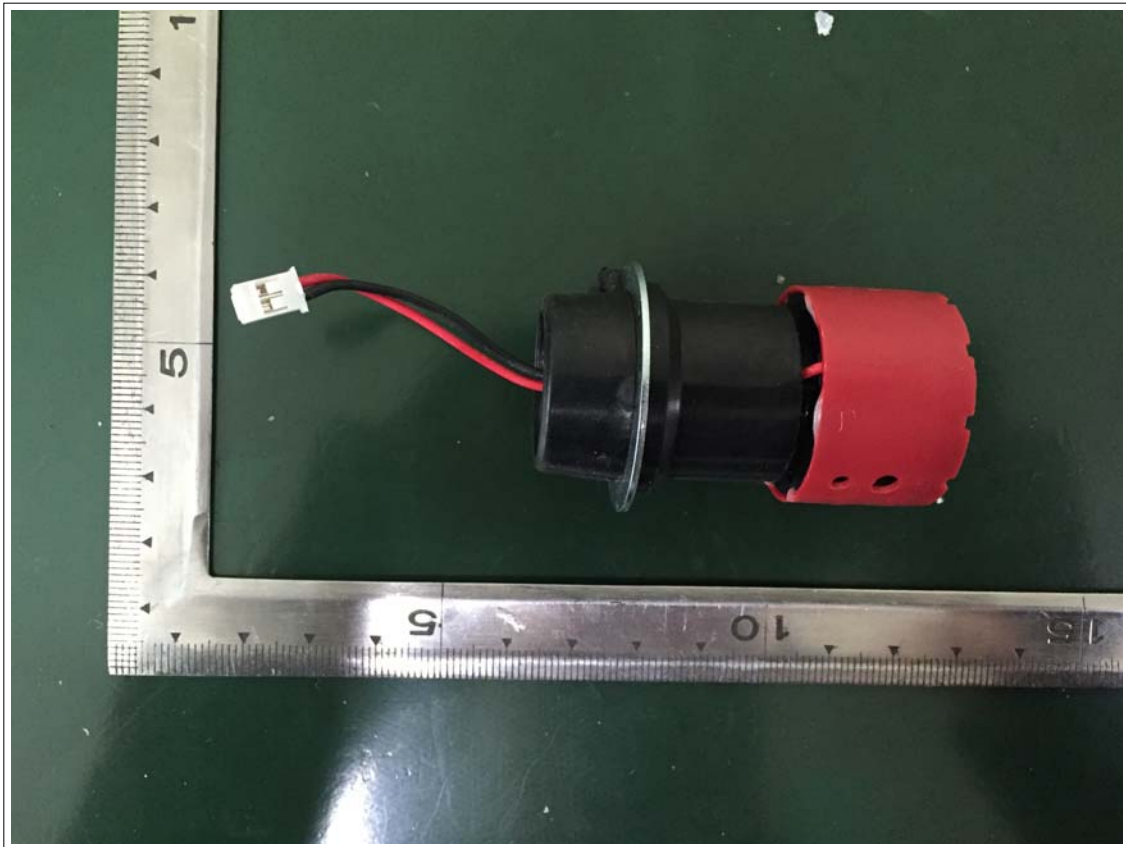
View of Main PCB(Top)



View of Main PCB(Bottom)



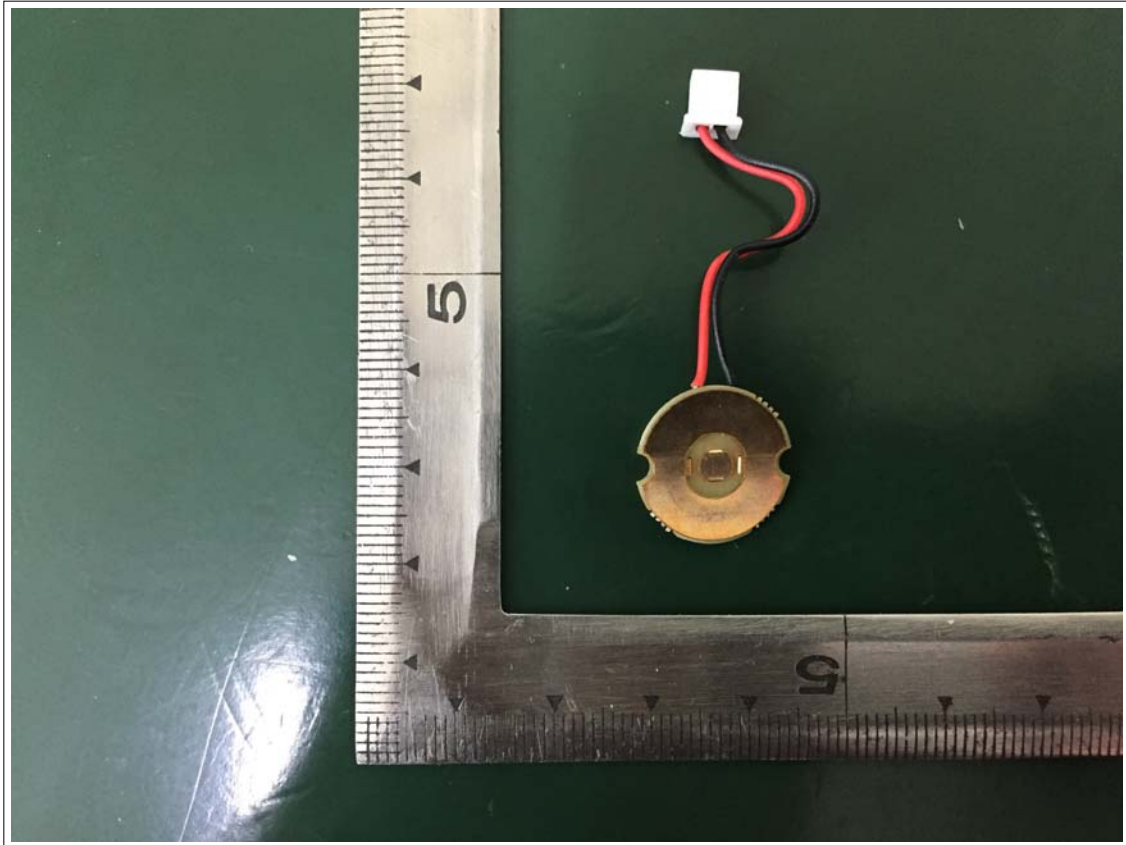
View of MIC (Top)



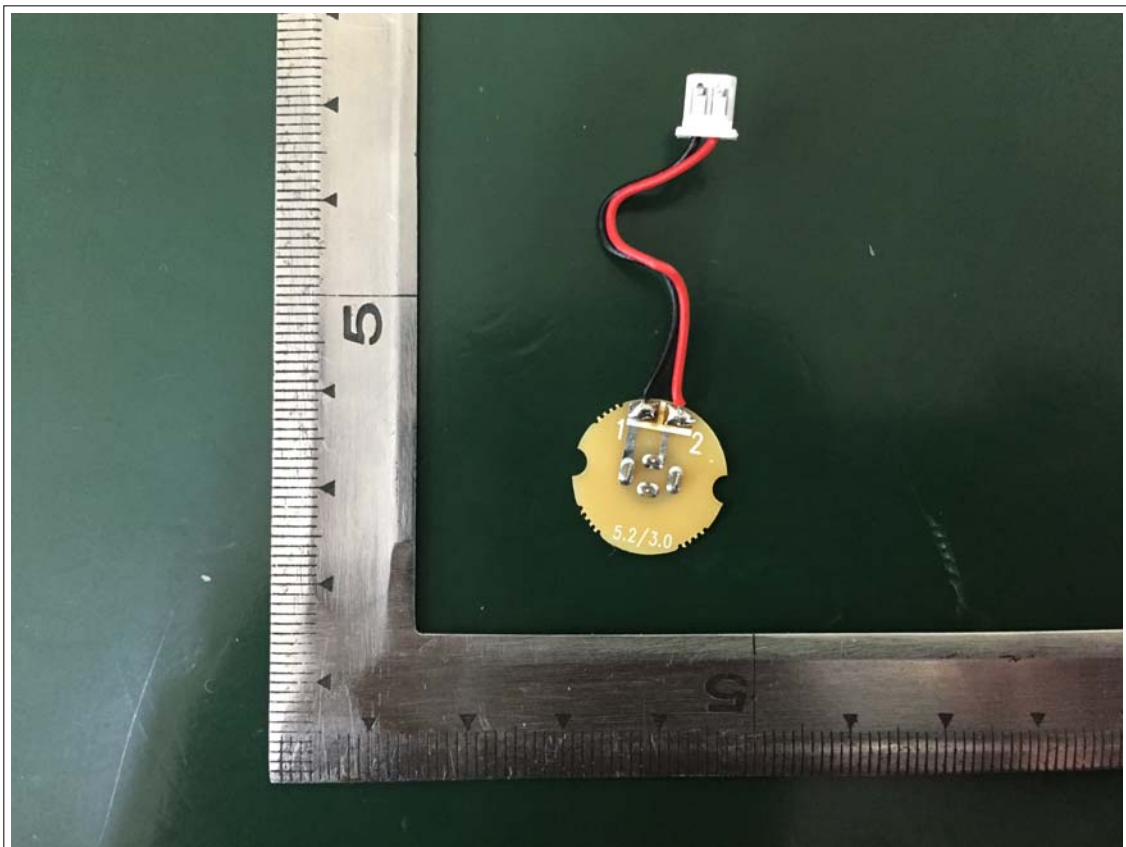
View of MIC (Bottom)



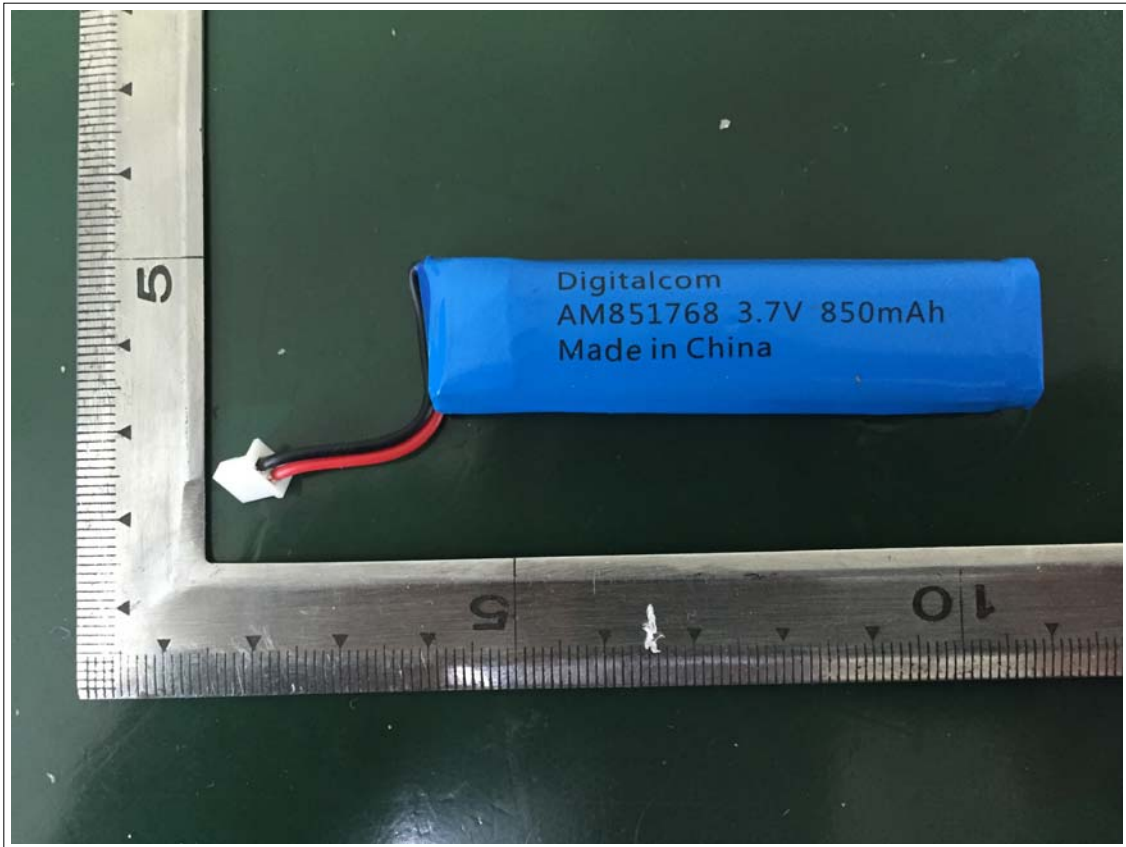
View of ANTENNA PCB(Top)



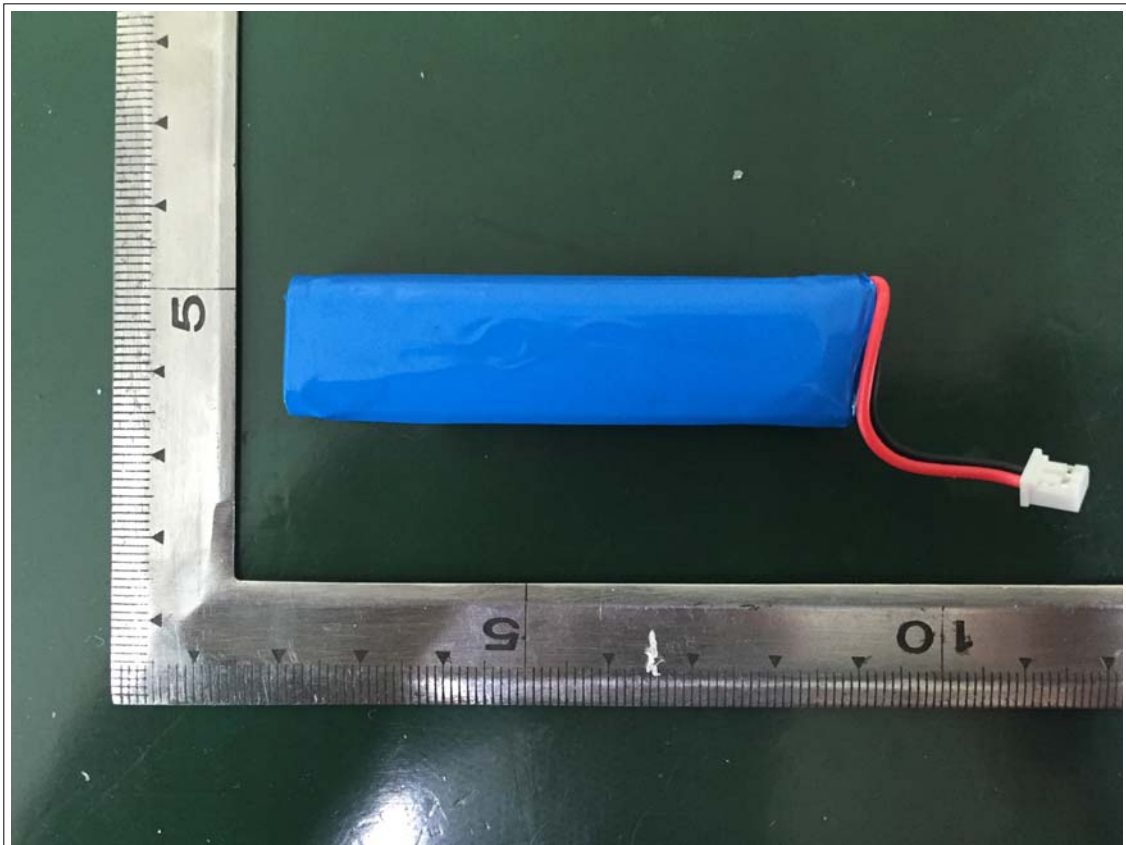
View of ANTENNA PCB(Bottom)



View of Battery (Top)



View of Battery (Bottom)



View of RF PART PCB

