

User Manual



Contents

1 Safety requirement.....	3
2 Handle and Caution in installation.....	3
3 Product Summary.....	3
4 Product Basic Information.....	3
5 Package Details.....	4
6 Product Part Name.....	5
6-1 Transmitter Information & Function.....	5
6-2 Receiver Information & Function (Front).....	6
6-3 Receiver Information & Function (Rear).....	7
7 Usage Instruction.....	8
7-1 Connection with External Devices.....	8
7-2 Channel Setting Instruction (Receiver).....	9
- Initial LCD Setting Instruction.....	9
- SCAN Function Setting Instruction.....	9
- SEEK Function Setting Instruction.....	10
- IR Channel Function Setting Instruction.....	10
7-3 Channel Setting Instruction (Transmitter).....	10
7-4 How to fix Rack Cabinet of Receiver.....	11
7-5 Replacement Guide for Microphone Cartridge & Battery.....	12
8 Trouble Shooting.....	13
9 Product Specification.....	14
9-1 Transmitter.....	14
9-2 Receiver.....	14
10 Warranty.....	15

1. Safety requirement Before Usage

- Please carefully read this user manual before you use this electronic device.
- Please use the designated microphone.

2. Handle and Caution in installation

- Please do not disassemble the device.
- If you would like to clean this wireless system, please rub it with the soft fiber.
- You should not use volatile solvent such as gasoline, benzene.
- When you replace batteries of the transmitter, please power off and check the battery position, (+) and (-).

3. Product Summary

- This product is the wireless microphone audio system and it provides the clear sound quality using the 900MHz frequency.
- The multi-tone system is applied so this system can avoid the noise and frequency interference.
- The product stability is increased using the diversity circuit.
- The channel of the transmitter can be detected automatically to use the "AUTO SCAN" function.
- The clear channel can be chosen, using the "AUTO SEEK" function.
- Maximum 12 channels can be used at the same time.

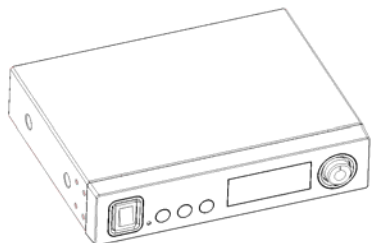
It can be limited according to the distance between the transmitter and receiver.

4. Product Basic Information

- Description : Wireless Microphone System
- Model Name : CMP-1400 -Transmitter : CMP-1400TF -Receiver : CMP-1400RF
- Manufacturer : DigitalCom
- Country of Origin : Republic of Korea

5. Package details

▪ **Product**

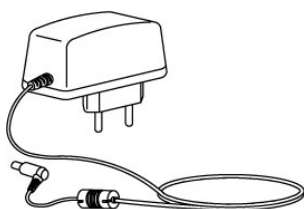


Receiver (CMP-1400RF)



Transmitter (CMP-1400TF)

▪ **Accessory**



Adaptor for Receiver



Manual

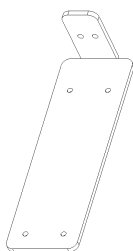


Antenna for Receiver x 2EA

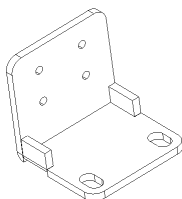


Pouch for Transmitter

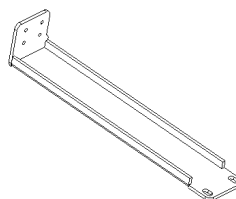
▪



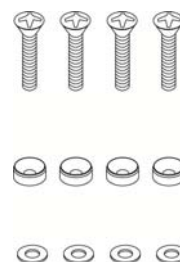
Bracket
for Receiver x 2EA



Rack Bracket
for 2CH x 2EA



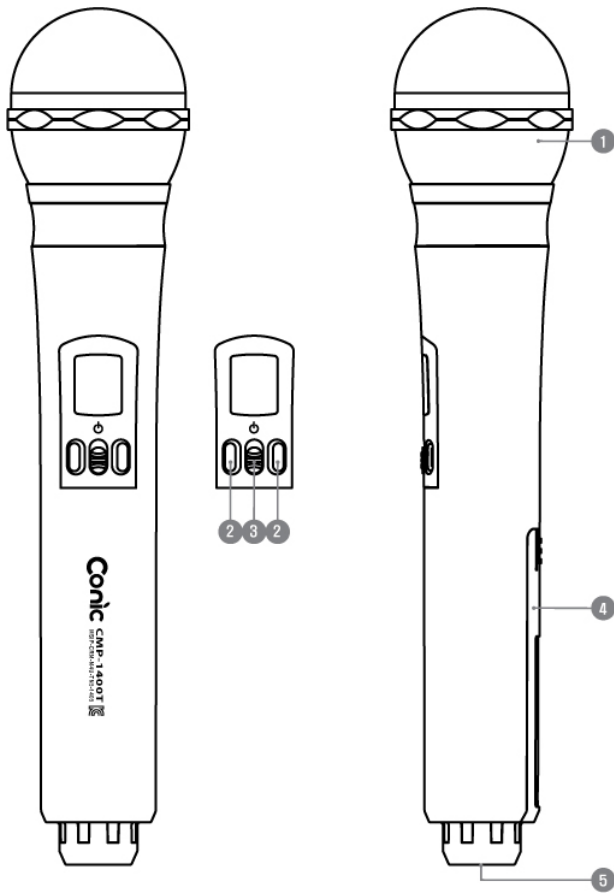
Rack Bracket
for 1CH x 1EA



Bolt Set for Rack Fixation

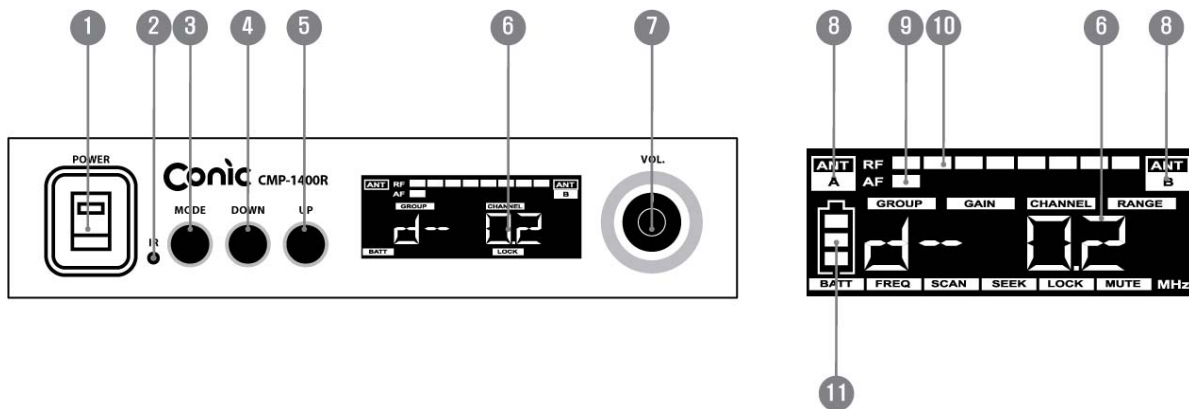
6 Product Part Name

6-1. Each part's name & Function of Transmitter (CMP-1400TF)



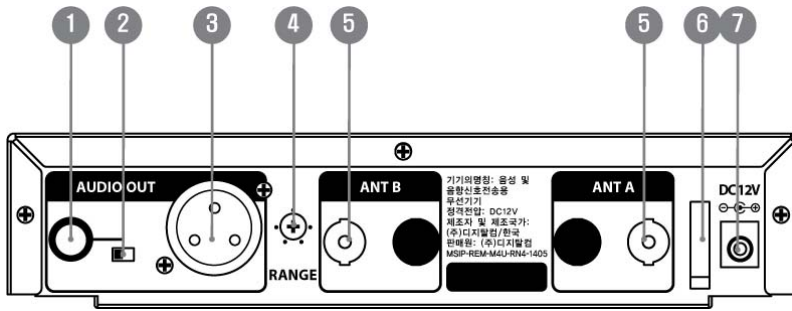
- ① MIC Ball : It protects the microphone cartridge which can change the electronic signal from voice.
- ② Back Light Switch On : You can check the current frequency after turning on the back LCD light.
- ③ Main Power Switch : It is the main power switch and it is used when you turn on(off) the transmitter.
- ④ Battery Cover : It is the cover for the battery replacement.
- ⑤ IR Sensor : The IR Sensor is applied so it can recognize the receiver channel information of the receiver during the channel change.

6-2. Each part's name & Function of Receiver (Front part)



- ① POWER : It is the power switch. It is used when you turn on/off the device.
- ② IR Sensor : IR sensor is included so it can send the channel information of receiver to the transmitter.
- ③ MODE Button : It is used when you change the mode from "LOCK" to "UNLOCK" or move to another mode.
- ④ UP Button : It is used when you change the channel or the frequency, move to the detailed function at the different model.
- ⑤ DOWN Button : It is used when you change the channel or the frequency, move to the detailed function at the different model.
- ⑥ Channel Display : The using group, channel mode, frequency mode are shown.
- ⑦ Volume Knob : It can adjust the audio sound.
- ⑧ Antenna Display :
 - The "Diversity" technology is applied for the superior reception signal level.
 - The antenna of the strong signal is indicated.
- ⑨ AUDIO Level Display : It indicates the current audio signal size.
- ⑩ RF Level Display : It indicates the RF signal size.
- ⑪ Battery Remains Display : It indicates the battery level of the transmitter.

6-3. Each part's name & Function of Receiver (Rear part)



① MIC Output Port

It is the audio signal output port which is connected with the receiver and 1/4" Phone Jack.

② LOW / HI Switch

It can adjust the output level of 1/4" Phone Jack.

③ BAL Port

It is the audio signal output port, connected with the receiver and the connector jack of XLR type.

④ Sensitive Adjustment Volume

It is the volume which can adjust the reception distance of the transmitter.

Please move to the maximum position in case of the audio disconnection.

When the interference or noise are happened, please move to the minimum position.

⑤ Antenna Input Port

It is the RF signal input port.

When you connect the antenna, please turn the clockwise.

⑥ Adaptor Cable Fix Holder

It can fix the adaptor cable.

⑦ Power Supply Input Port

It is the port of the power, DC 12V / 1A.

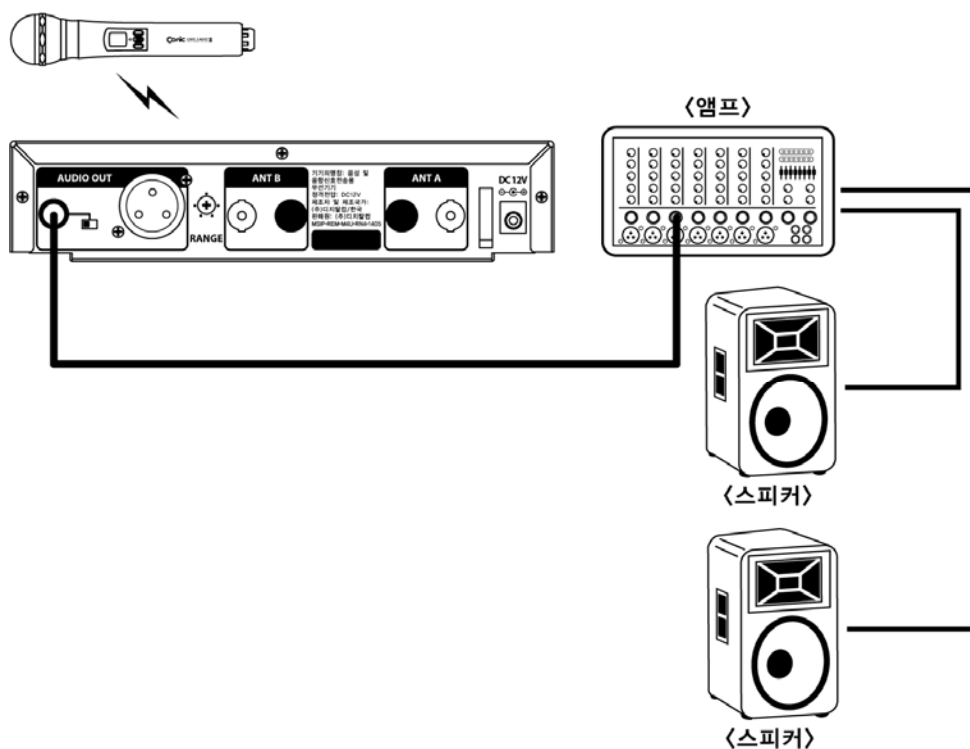
7. How to Use

7-1 Connection with external devices

Please connect the audio cable (one side) with the output port of the receiver, the other side cable with the MIC port of the amplifier.

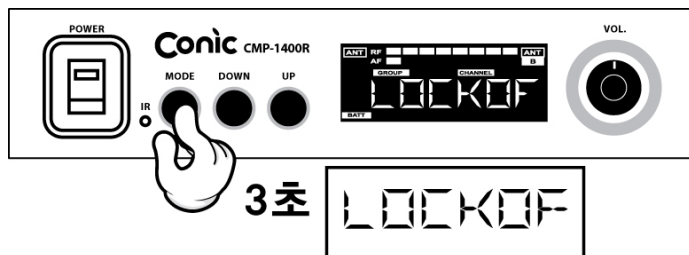
You can choose the BAL port or MIC output port.

Please place the receiver to the distant location from the external devices to avoid the noise and the interference.

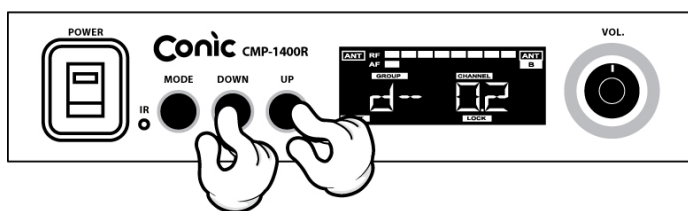


7-2. Channel Setup Method (Receiver)

- ① Please push the mode switch for 3 seconds then the mode will be changed as "LOCKOF".



- ② Please use "UP / DOWN" button to setup groups or channels. If you do not press any buttons for more than 2 seconds, the mode is changed as "LOCK" automatically and the setup is completed.



- How to change the initial LCD status

There are two types of LCD displays when the receiver turns on the power

The one is "Group & Channel" and the other is "Frequency" model.

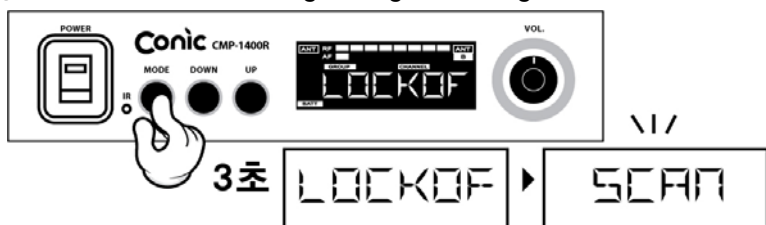
*Group & Channel Mode

*Frequency Mode

*Press MODE button for 3 seconds (LOCKOF) > press MODE button > press MENU button > SCAN, SEEK, **FR SET**, **CH SET** use (DOWN/UP) button > press MODE button then the setup is completed.

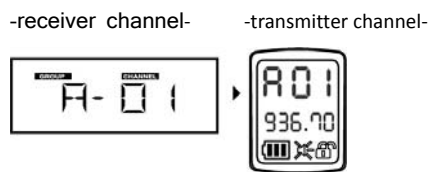
- How to set the SCAN function

- ① Please find the strongest signal through the SCAN function.



*Press MODE button for 3 seconds(LOCKOF) > press MODE button > press MENU button > **SCAN**, SEEK, FR SET, CH SET use (DOWN/UP) > press MODE button then setup is completed.

② The channel of the transmitter is same as the frequency which is found through the receiver's SCAN.



- How to set the “SEEK” function

We can find the clear channel of the receiver through the “SEEK”.

*Press MODE button for 3 seconds (LOCKOF) > press MODE button > press MENU button > SCAN, **SEEK**, FR SET, CH SET use (DOWN/UP) button > press MODE button then the setup is completed

- How to set the IR channel function

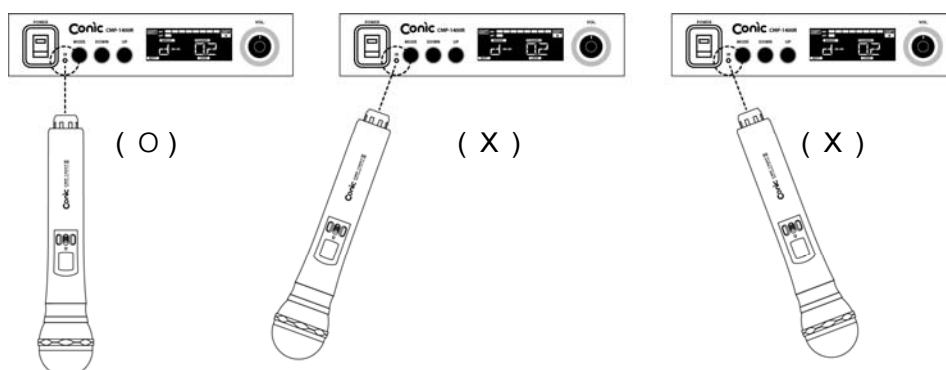
- ① The IR-OUT mode is entered when you press the button of “DOWN” or “UP” for one second.
- ② Please place the bottom of the transmitter to the IR port of the receiver.
(please refer to the image of 7-2 ③)
- ③ The channel of the transmitter will be same as the receiver's channel.
(please refer to the image of 7-2 ④)

7-3. Channel Setup Method (Transmitter)

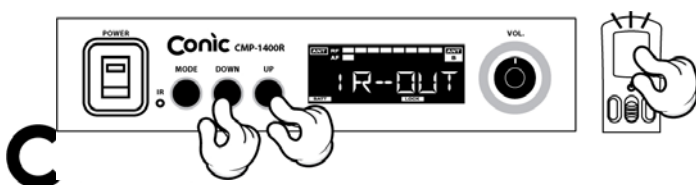
- ① Please prepare the transmitter and the receiver what you want to set the channel.
- ② Please set the receiver channel first. (refer to the image of 7-2 ①, ②)

- press MODE button for 3 seconds (LOCKOF) > use “DOWN/UP” button to choose the channel.

- ③ Turn on the power of the transmitter and place the IR port of the transmitter in a straight line same as below image.



- ④ Push the button of “UP/DOWN” then the LCD of the transmitter lights on. And the channel setup is finished.



- Channel Table

채널	TONE	송신기 주파수 (MHz)	수신기 주파수 (MHz)	채널	TONE	송신기 주파수 (MHz)	수신기 주파수 (MHz)
CH1	O	903.00	659.05	CH31	O	905.80	661.85
CH2	P	918.60	674.65	CH32	N	909.40	665.45
CH3	P	904.60	660.65	CH33	N	911.00	667.05
CH4	N	917.40	673.45	CH34	P	916.60	672.65
CH5	N	906.60	662.65	CH35	P	906.20	662.25
CH6	O	915.40	671.45	CH36	O	920.20	676.25
CH7	P	907.80	663.85	CH37	N	911.80	667.85
CH8	O	913.80	669.85	CH38	O	921.80	677.85
CH9	O	903.40	659.45	CH39	N	909.80	665.85
CH10	N	907.00	663.05	CH40	P	923.40	679.45
CH11	O	904.20	660.25	CH41	P	917.00	673.05
CH12	P	919.00	675.05	CH42	O	920.60	676.65
CH13	P	908.20	664.25	CH43	O	910.60	666.65
CH14	O	917.80	673.85	CH44	N	913.00	669.05
CH15	O	914.20	670.25	CH45	P	911.40	667.45
CH16	N	915.00	671.05	CH46	N	924.20	680.25
CH17	N	903.80	659.85	CH47	P	912.60	668.65
CH18	P	907.40	663.45	CH48	O	921.40	677.45
CH19	P	918.20	674.25	CH49	N	922.20	678.25
CH20	O	919.80	675.85	CH50	P	924.60	680.65
CH21	P	905.00	661.05	CH51	N	925.80	681.85
CH22	N	916.20	672.25	CH52	O	926.60	682.65
CH23	N	908.60	664.65	CH53	N	912.20	668.25
CH24	P	921.00	677.05	CH54	P	913.40	669.45
CH25	P	909.00	665.05	CH55	N	923.80	679.85
CH26	P	914.60	670.65	CH56	O	925.00	681.05
CH27	O	905.40	661.45	CH57	N	925.40	681.45
CH28	N	910.20	666.25	CH58	P	927.40	683.45
CH29	O	915.80	671.85	CH59	N	926.20	682.25
CH30	P	919.40	675.45	CH60	P	927.00	683.05

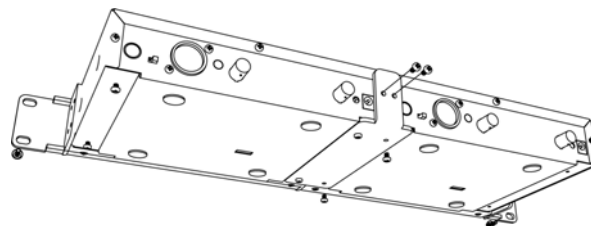
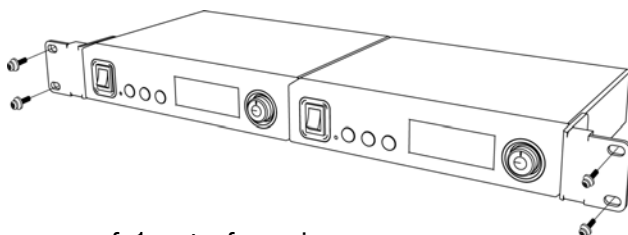
O	41.2KHz
P	43.9KHz
N	38.4KHz

7-4. How to fix the rack cabinet

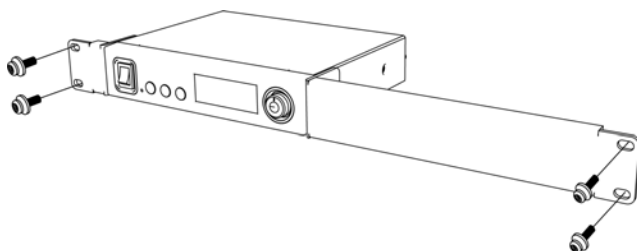
Please tighten the screw completely.

The provided screws are only used for the rack cabinet fixing.

- in case of 2 sets of receivers

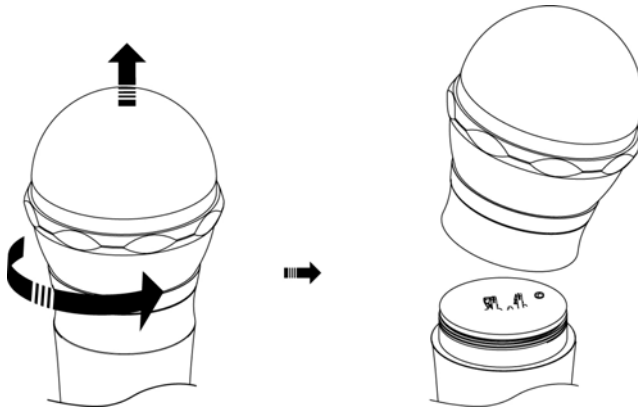


- in case of 1 set of receiver



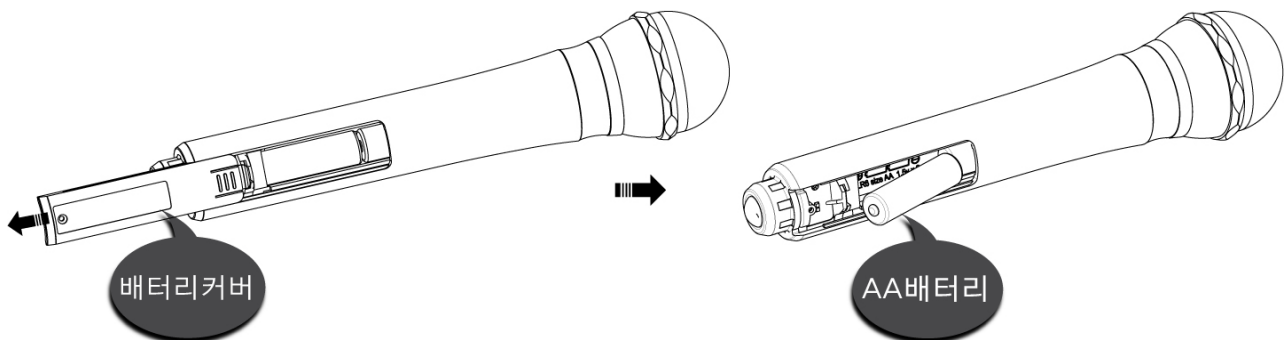
7-5. Microphone Cartridge & Battery replacement

① Please disassemble the microphone head.



② Please remove the battery cover.

③ Please replace 2pcs of AA size batteries. (+) position should be head to the bottom side.



- Battery life of the transmitter

- The battery life would be very different according to the using environment.

상태표시	사용시간
	50%이상 (5시간 ~ 10시간 사용)
	20%이상 (3시간 사용)
	10%이상 (1시간 사용)
	Low Battery (10초이내 전원off)

8. Trouble Shooting

8-1. Malfunction

Please check the battery life. If it is no problem, please check the microphone cartridge.

8-2. No Sound or Strange Sound

① the battery is no problem but it doesn't make the proper sound.

Please replace the microphone cartridge which is provided by the manufacturer.

② If the battery life is not enough, it is the reason of the "No Sound".

Please replace batteries.

8-3. Severe Howling

The howling is caused by the environment such as the speaker location. So please check this issue with the professional audio engineer.

If the specific microphone has this problem, please contact the manufacturer.

8-4. Noise

It can be caused by the interference from other electronic devices.

In this case, please locate the receiver to long distance from these devices.

8-5 Severe Noise & Broken Tray Sound

This symptom is caused by frequency duplication.

First of all, please change the current channel.

The frequency range of our wireless microphone is 900MHz and total 44 channels can be used at the same time.

9. Specification

10-1. Transmitter (CMP-1400TF)

Description	Unit	Standard
Frequency	MHz	903~927
RF Output	mW	8±2
Channel Number	CH.	60
Modulation	.	FM
Frequency Stability	ppm	±2(-20°C~+50°C)
voltage controlled oscillator	.	PLL
Current Sinking	mA	200 Max.
Antenna	.	Internal
Power	.	1.5V AA battery x 2ea (alkaline)

10-2. Receiver (CMP-1400RF)

Description	Unit	Standard
Frequency	MHz	903~927
Reception Sensivity	dBm	-100 dBm(40dB SINAD)
Audio Output	Vp-p	XLR: 2.8~3.2V Vp-p(1KHz, 변조도:±50KHz입력시) 1/4in.: 2.0~2.5V Vp-p(1KHz, 변조도:±50KHz입력시)
Noise Cancellation	.	Compander I.C
Frequency Stability	ppm	±2(-20°C~+50°C)
voltage controlled oscillator	.	PLL
Current Sinking	mA	400 Max.
S/N	.	90 MIN
THD	.	1%
Antenna	.	BNC DIPOLE ANT.
Power	.	DC12V / 1A

FCC Information to User

This equipment has been tested and found to comply with the limits for a Class B digital device, pursuant to Part 15 of the FCC Rules. These limits are designed to provide reasonable protection against harmful interference in a residential installation. This equipment generates, uses and can radiate radio frequency energy and, if not installed and used in accordance with the instructions, may cause harmful interference to radio communications. However, there is no guarantee that interference will not occur in a particular installation. If this equipment does cause harmful interference to radio or television reception, which can be determined by turning the equipment off and on, the user is encouraged to try to correct the interference by one of the following measures:

- Reorient or relocate the receiving antenna.
- Increase the separation between the equipment and receiver.
- Connect the equipment into an outlet on a circuit different from that to which the receiver is connected.
- Consult the dealer or an experienced radio/TV technician for help.

Caution

Modifications not expressly approved by the party responsible for compliance could void the user's authority to operate the equipment.

FCC Compliance Information : This device complies with Part 15 of the FCC Rules. Operation is subject to the following two conditions: (1) This device may not cause harmful interference, and (2) this device must accept any interference received, including interference that may cause undesired operation

Information to user.

The users manual or instruction manual for an intentional or unintentional radiator shall caution the user that changes or modifications not expressly approved by the party responsible for compliance could void the user's authority to operate the equipment. In cases where the manual is provided only in a form other than paper, such as on a computer disk or over the Internet, the information required by this section may be included in the manual in that alternative form, provided the user can reasonably be expected to have the capability to access information in that form.

IMPORTANT NOTE:

IMPORTANT Safety Instruction:

CAUTION

To reduce the risk of electric shock, do not remove the top cover (or the rear section).
No user serviceable parts inside, refer servicing to qualified personnel.



This symbol, wherever it appears, alerts you to the presence of uninsulated dangerous voltage inside the enclosure-voltage that may be sufficient to constitute a risk of shock.



This symbol, wherever it appears, alerts you to the important operating and maintenance instructions in the accompanying literature. Please read the manual.

- 1) Read these instructions.
- 2) Keep these instructions.
- 3) Heed all warnings.
- 4) Follow all instructions.
- 5) Do not use this equipment near water.
- 6) Do not use near any heat sources such as radiators, heat resistors, stove, or other equipment that produce heat.

CAUTION

**RISK OF EXPLOSION IF BATTERY IS REPLACED
BY AN INCORRECT TYPE.
DISPOSE OF USED BATTERIES ACCORDING
TO THE INSTRUCTIONS**

European CE notice to users and product statements

This product is CE marked according to the provisions of the R&TTE Directive(99/5/EC). Hereby, Digitalcom Co., Ltd. declares that this product is in compliance with the essential requirements and other relevant provisions of Directive 1999/5/EC.

For further information, please contact [http:// www.digitalcoms.net](http://www.digitalcoms.net)

CE1177

Digitalcom Co., Ltd.

303-801 Bucheon Techno Park Ssangyong 3 Cha Apt, 397, Seokcheon-ro,
Ojeong-gu, Bucheon-si 421-742, Korea

Tel: +82-32-624-1980 / Fax: +82-32-624-1985

URL: www.digitalcoms.net