

Interior view of EUT

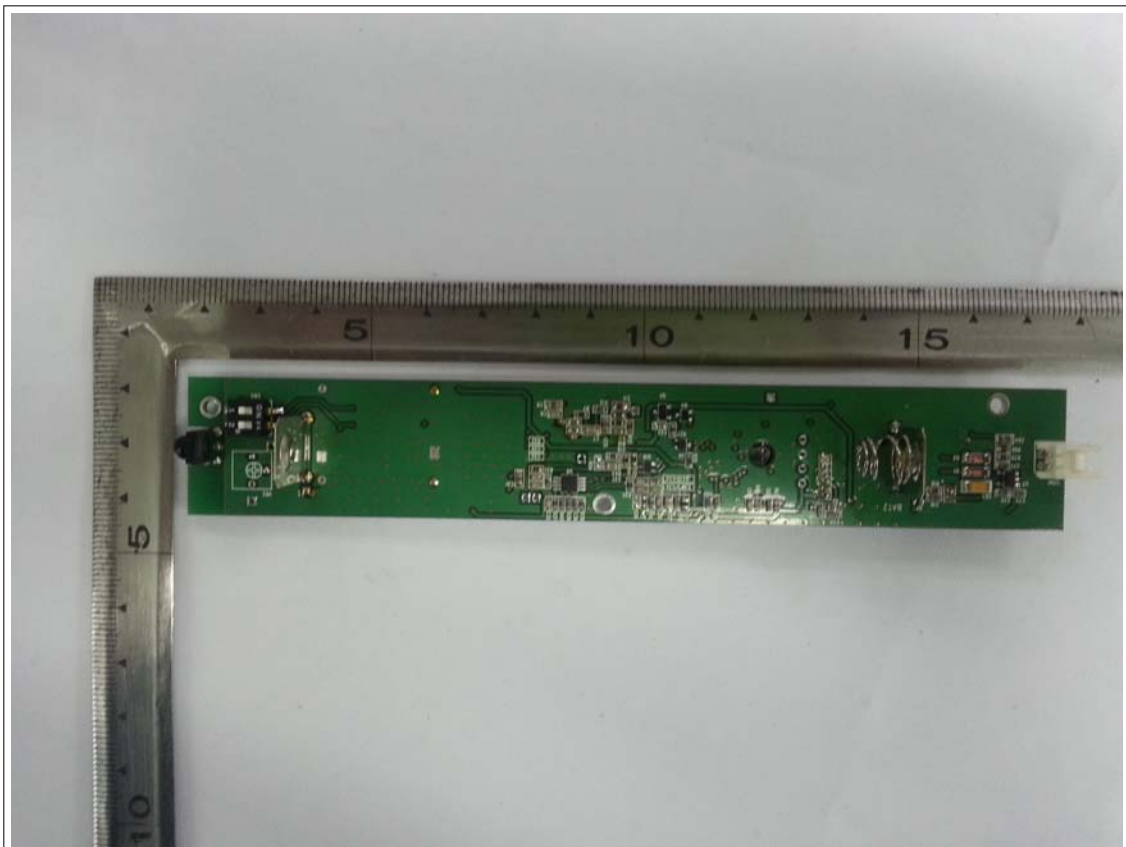
Internal Photos



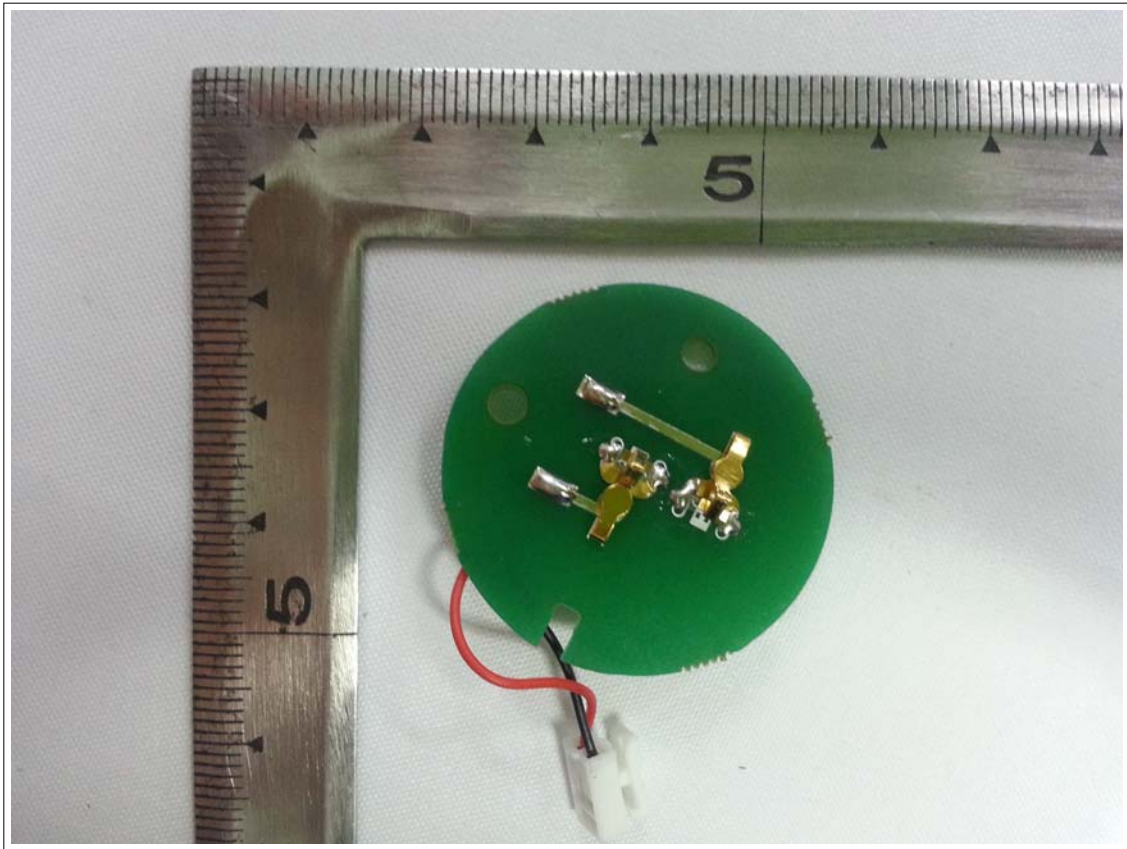
View of Main PCB(Top)



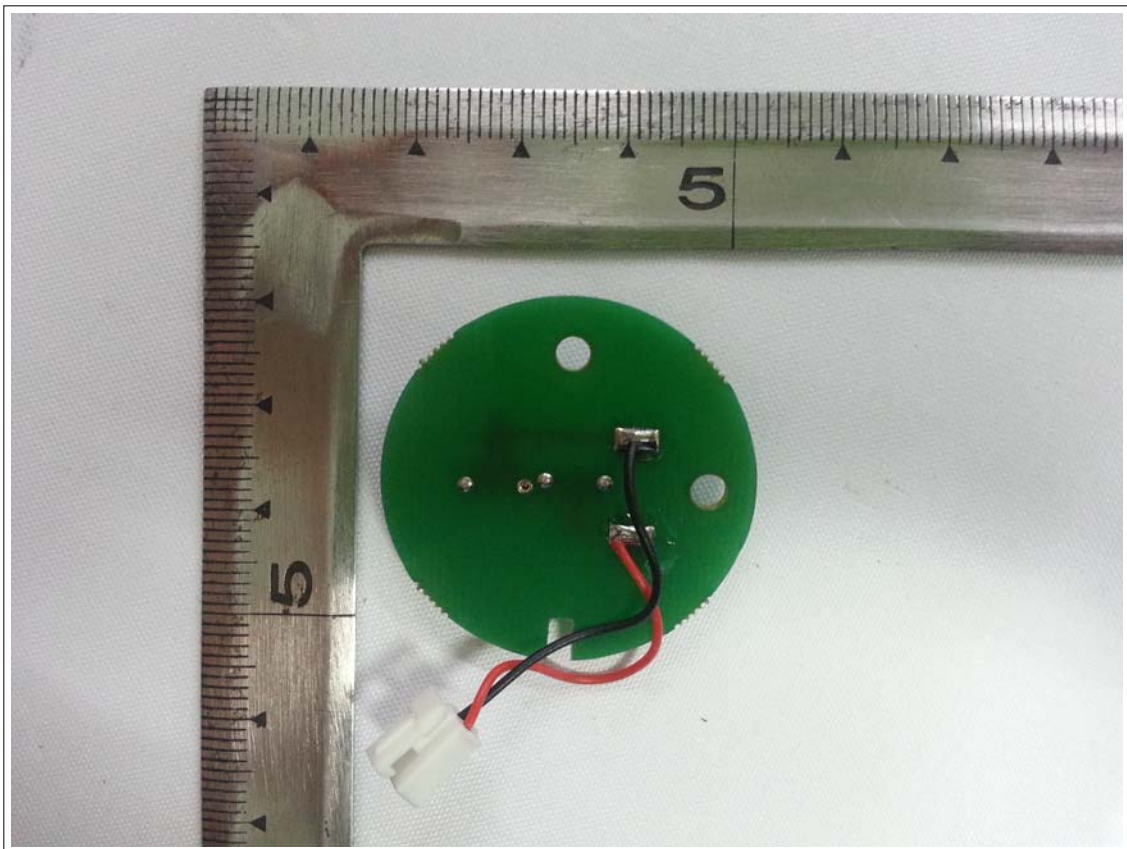
View of Main PCB(Bottom)



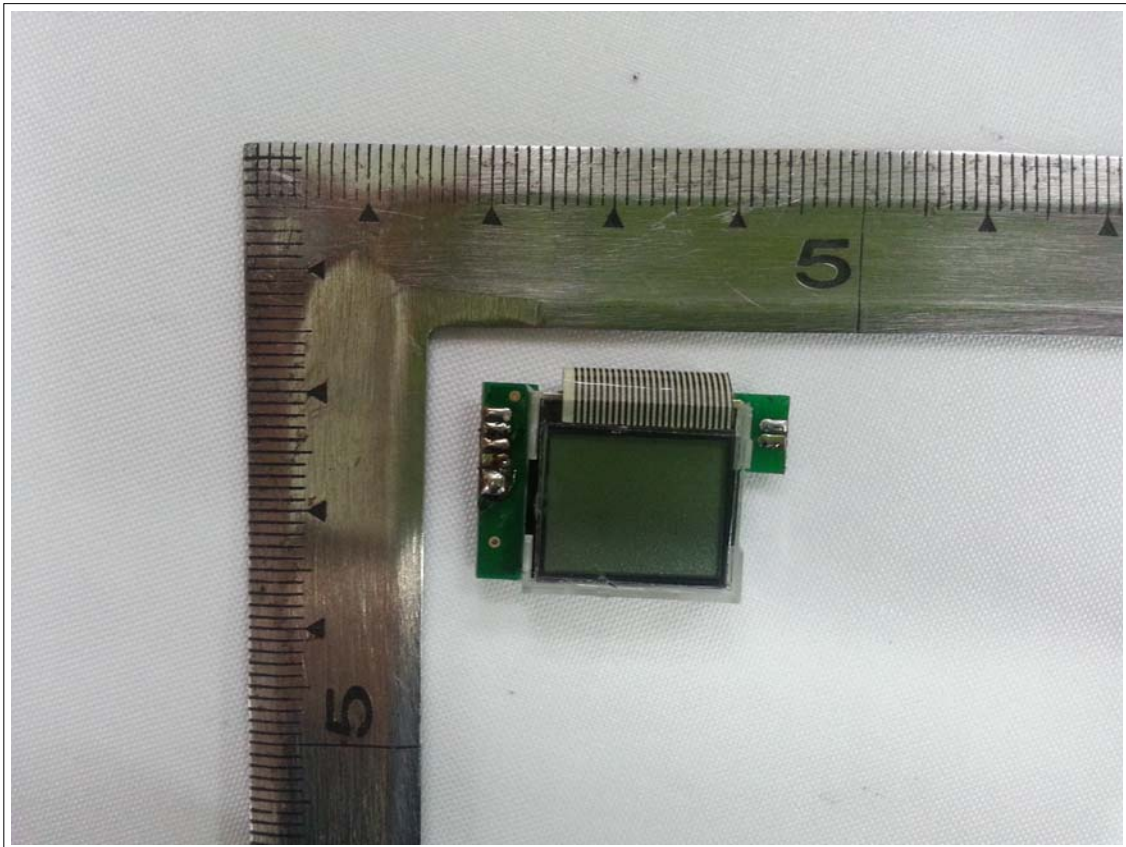
View of MIC PCB(Top)



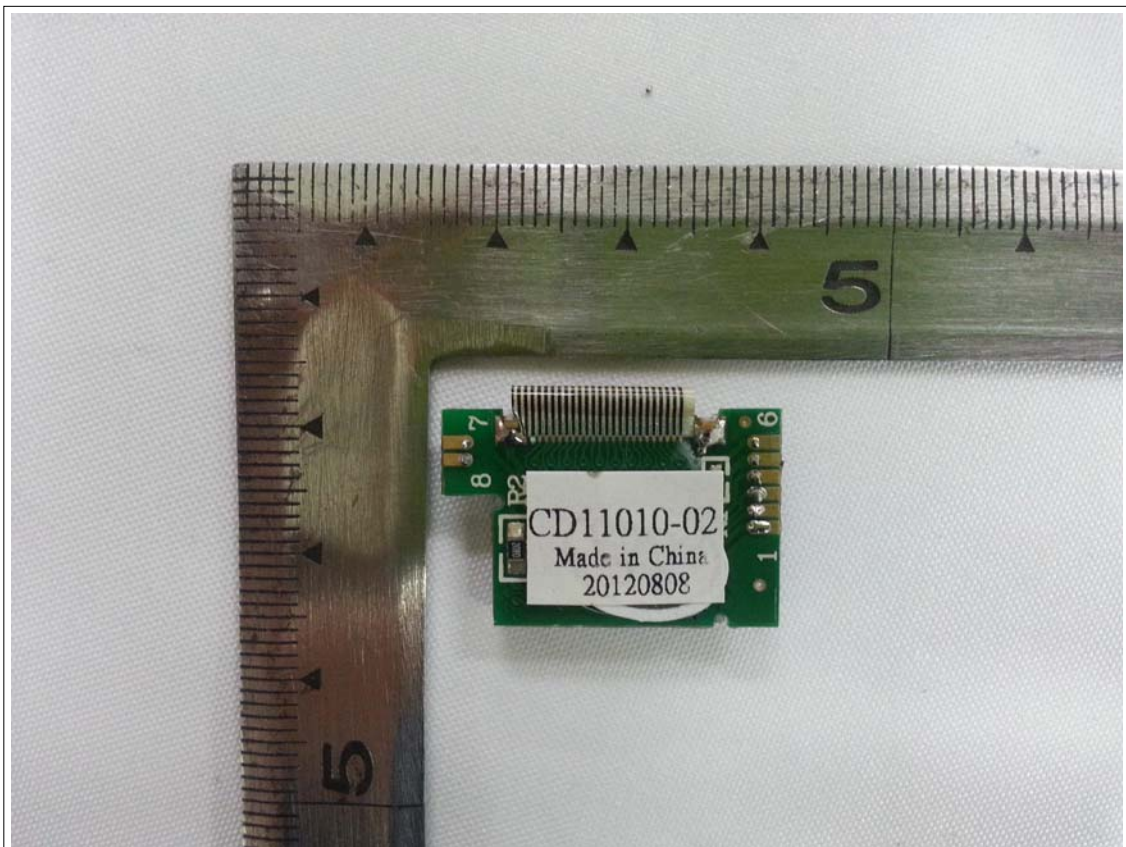
View of MIC PCB(Bottom)



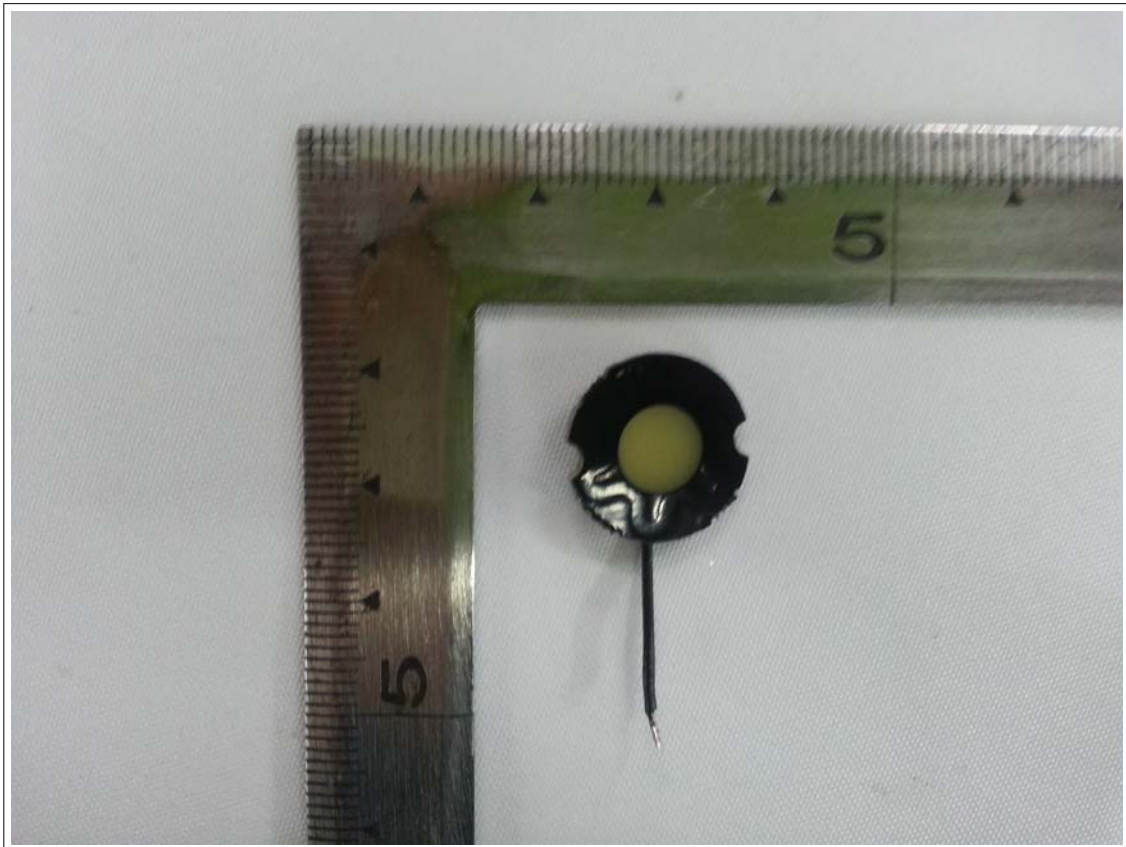
View of DISPLAY PCB(Top)



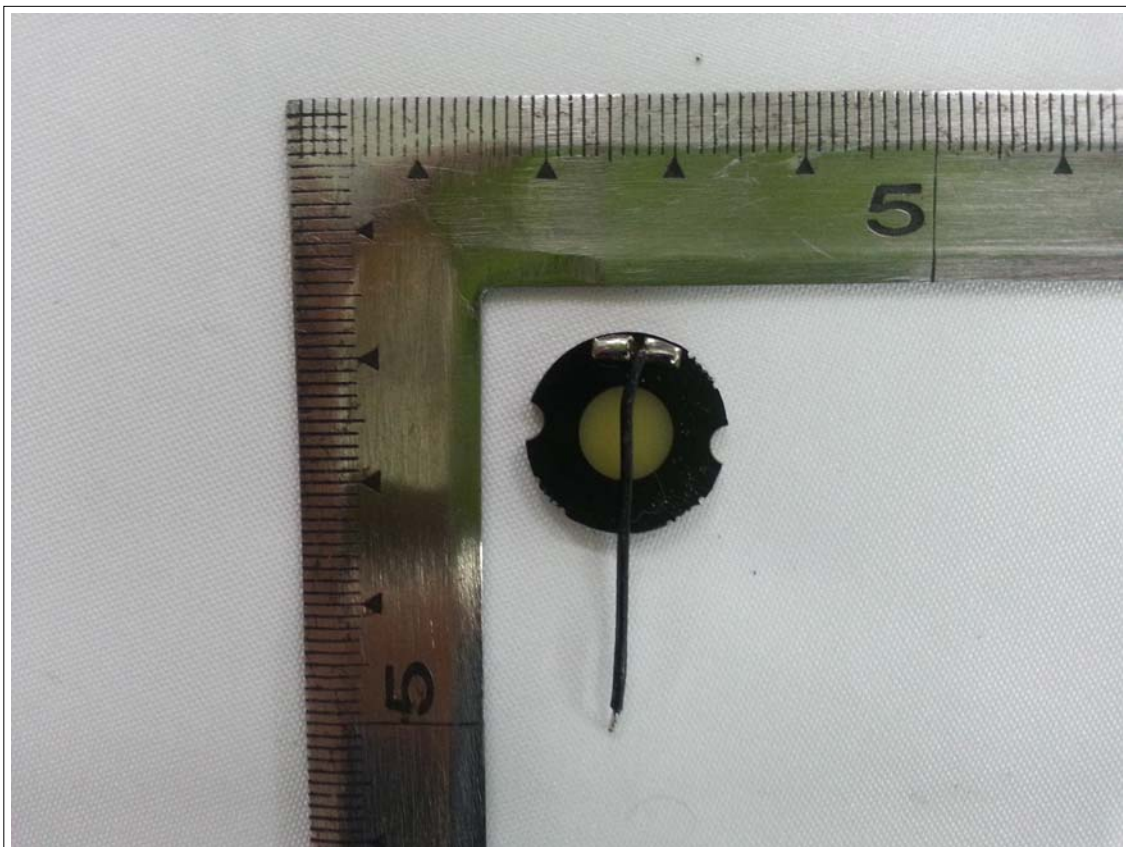
View of DISPLAY PCB(Bottom)



View of ANTENNA PCB(Top)



View of ANTENNA PCB(Bottom)



View of RF PART PCB

