

d'com® Professional Wireless
Microphone
ULTIMATE CHOICE OF FREQUENCY AGILE SYSTEM



www.mic4u.co.kr

**Ultimate Durable 17 Channels
Rechargeable Wireless System
with USB Charger**

DMK920 Series User Guide



d'com
igitalCom Co.,Ltd.

Contents

1. Important Safty Instructions 3

2. About Product 4

3. Parts List 5

4. System Components 6

5. System Setup 8

6. Troubleshooting 12

7. Channel Chart 13

8. Specifications 14

9. Limited Warranty Statement 15

1

Important Safety Instructions

- Please take a few moments to read these instructions carefully, as we want you to enjoy your new digitalcom products quickly and to the fullest.
- Never open electronic units! If units are opened by customers in breach of this instruction, the warranty becomes null and void.
- Keep the units away from central heating radiators and electric heaters.
- Use the units in dry rooms only.
- Use a damp cloth for cleaning the units. Do not use any cleansing agents or solvents.
- Protect the power cord from being walked on or pinched particularly at plugs, convenience receptacles, and the point where they exit from the apparatus.
- Only use attachments and accessories specified by the manufacturer.
- Refer all servicing to qualified service personnel.
Servicing is required when the apparatus has been damaged in any way, such as power supply cord or plug is damaged, liquid has been spilled or objects has fallen into the apparatus, the apparatus has been exposed to rain or moisture, does not operate normally, or has been dropped.
- When replacement parts are required. Be sure the service technician has used replacement parts specified by the manufacturer or have the same characteristics as the original parts. Unauthorized substitutions may result in fire, electric shock, or other hazards.
- If your product is not operating correctly or exhibits a marked change in performance and you are unable to restore normal operation by following the detailed procedure in its operating instructions, do not attempt to service it yourself as opening or removing covers may expose you to dangerous voltage or other hazards. Refer all servicing qualified service personal.

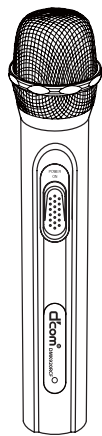
2

About Products

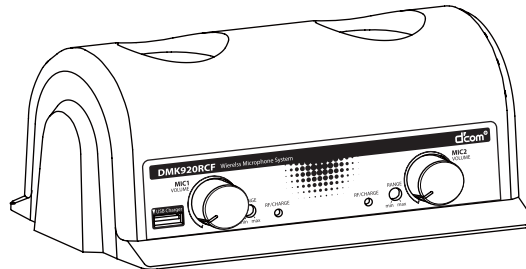
- Complies with new FCC frequency rules.
- UHF Wireless Microphone System
- Ultimate Durable Wireless Microphone
- Switchable, 17 Channels per Receiver (34 Total Channels)
(17 Sets can be used at the same time.)
- Noise Reduce Technology
- Multi-tone system to avoid frequencies interference
between Mic 1 & 2.
- Rechargeable Battery Design
- USB Port for Cellphone Charger
- Wall Mountable

3-1. DMK920 Series

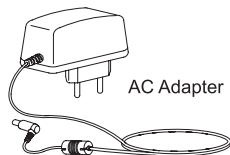
(Microphone Transmitter : DMK920TF)



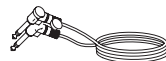
(Receiver : DMK920RCF)



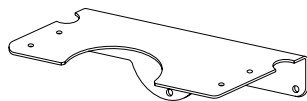
<Accessories>



AC Adapter

1/4" Mic Jack
(Male 1/4" Jack on Both Ends)

1.5 mm L Wrench



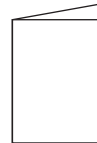
Receiver Bracket



Wall Screws



Receiver Screws

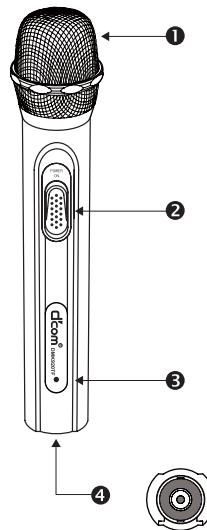


Manual

4 System Components

4-1. DMK920TF Transmitter Features and Control

DMK920TF
Transmitter



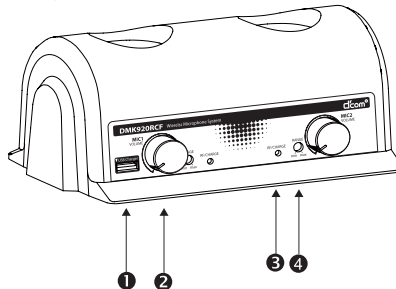
- ① Grille.** Protect the microphone cartridge and helps reduce breath sound and wind noise. The grilles of the various microphones heads differ in appearance.
- ② Power ON/OFF Switch.** Turns the transmitter on and off.
- ③ Power / Battery LED.** When the power switch is in the ON position, this LED will glow red, indicating that the transmitter is on. This LED will turn blinking when the battery is low.
- ④ Charge & Channel Setting Terminal.** Place the socket in slots of the receiver to charge batteries. Using the terminal to change channels of transmitter.

4 System Components

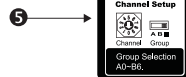
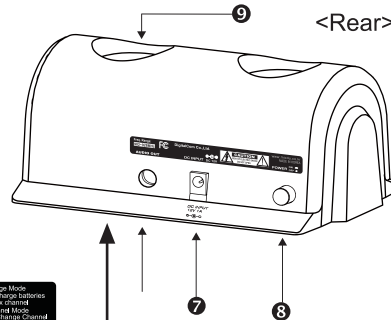
4-2. DMK920RCF Receiver Features and Control

DMK920RCF Receiver

<Front>



<Rear>



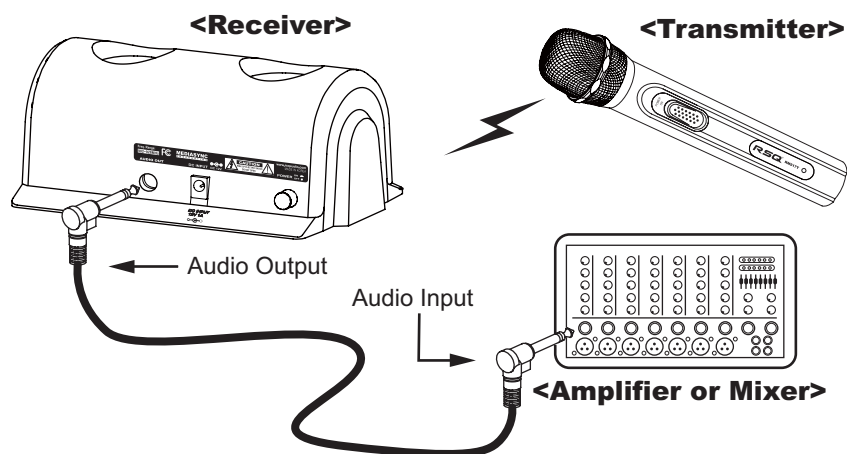
- 1 Cell Phone Charger.** Allows you to charge your phone while you singing.
- 2 Volume Controls.** Adjusts the receiver audio output level to match the required input levels of a mixer or amplifier. Normally, this control is set fully clockwise.
- 3 RF/Charge Indicator.** Glows green to indicate presence of received Radio Frequency (RF) signal.
When the battery is being charged the LED is in red.
When the battery is completely charged the LED is blinking.
It takes 3 hours 30 minutes to charge completely.
- 4 Signal Range Control.** Adjust the signal range between transmitter & receiver
- 5 Channel Switch.** This switch determines whether the channel is fixed or the channel is changed.
After change the channel, the switch is set to 'charge mode'
- 6 Output Connector.** This 1/4" unbalanced output jack is for output connection to amplifiers, effects devices or mixers.
- 7 Power Connector.** Accepts power from the supplied AC adapter.
(DC 12V 1A)
- 8 Power On/Off Switch.** Turns the receiver on and off.
- 9 Microphone Slots.** Insert the microphones in these slots to charge.

5 System Setup

5-1. Receiver Connections

Connect audio cable(s) the audio output(s) to the audio input(s) of your audio system, mixer and/ or amplifier, as shown.

Do not place the receiver nearby any electronics to prevent noise.



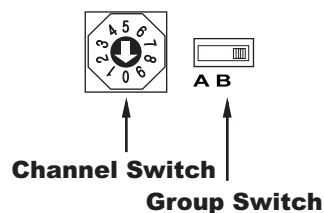
5-2. Channel Setting

- 1) Slide the switch to the Channel Mode position.



- 2) Select a group (A or B) from Channel Switch and then Select a channel (0 ~9) from Group switch.

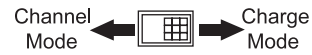
- Channel Selection of Group A
(A0, A1, A2, A3, A4, A5, A6, A7, A8, A9)
- Channel Selection of Group B
(B0, B1, B2, B3, B4, B5, B6)



17 Channels are available.

5 System Setup

- 3) Slide the switch to the Charge Mode position. Channels can not be changed from this moment.



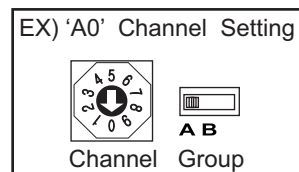
- 4) Plug the DC power supply into the power connector on the back of the receiver. The red led light on the receiver will blink twice. The Channel of transmitters and receiver has been changed as you set.

- 17 Channels are available.

NO.	Channel Chart	
	Group	Channel
1	A	0
2	A	1
3	A	2
4	A	3
5	A	4
6	A	5
7	A	6
8	A	7
9	A	8
10	A	9

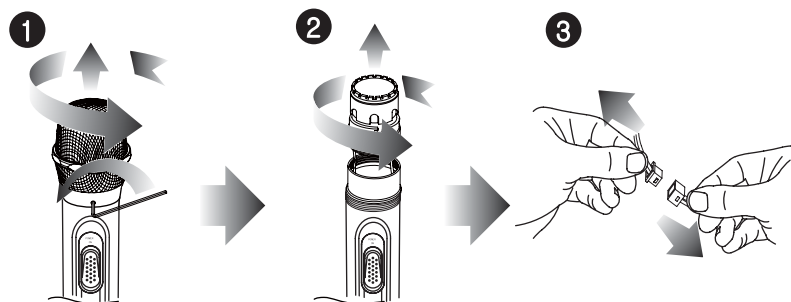
NO.	Channel Chart	
	Group	Channel
11	B	0
12	B	1
13	B	2
14	B	3
15	B	4
16	B	5
17	B	6

- 5) If you were using a bad Microphone, another Microphone and put it on 'RM917RC' can be replaced easily after the channel setting



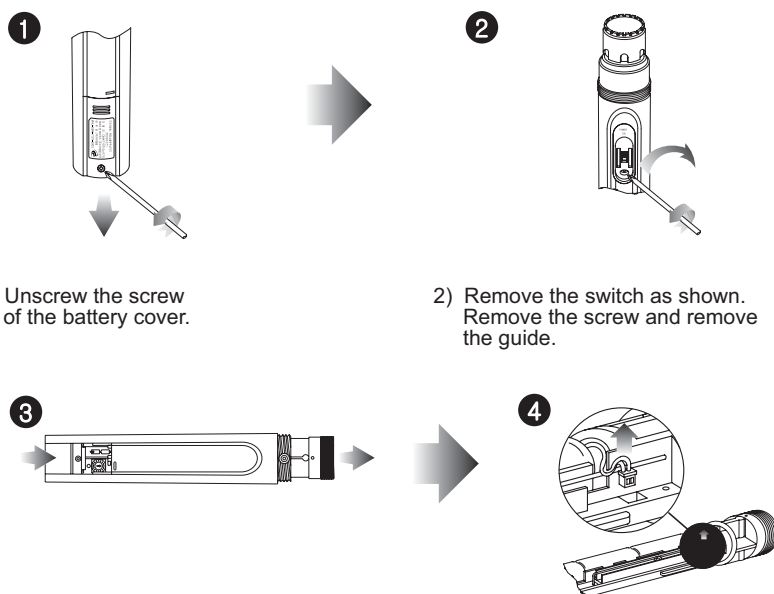
5 System Setup

5-6. Changing the cartridge (DMK920TF)



- 1) Remove the screw using the supplied wrench. Unscrew the grille. (counter-clockwise)
- 2) Gently ease the cartridge out of the contacts and then pull it out of the housing as shown.
- 3) Disconnect the cable as shown

5-6. Changing the battery (DMK920TF)



- 1) Unscrew the screw of the battery cover.
- 2) Remove the switch as shown. Remove the screw and remove the guide.
- 3) Push the bottom part and then pull out the cartridge.
- 4) Disconnect the battery cable from the cartridge.

6

Troubleshooting

Problems	Solutions
No Sound, No RF /AF LED lights	<ul style="list-style-type: none"> • Make sure the transmitter and receiver power switches and receiver are set to the ON position. • Check transmitter charge to ensure there is sufficient power. Charge the transmitter if necessary. • Check the AC adapter.
No RF signal	<ul style="list-style-type: none"> • Set transmitter and receiver to the same channel • Reduce the distance between transmitter and receiver.
Received signal is noisy or contains extraneous sounds with the microphone ON.	<ul style="list-style-type: none"> • Check transmitters charge and recharge if the charge is low. • Check the battery life. (6 months ~ 1 year)
Bursts of noise, distortion, or other radio performance.	<ul style="list-style-type: none"> • If noise occurs when transmitter is turned off, locate and remove nearby RF source, such as other wireless systems, signals interrupt CB radios, etc. • Change the wireless system's channel frequency.
Momentary loss of sound as transmitter is moved around performing area (dropouts)	<ul style="list-style-type: none"> • Reposition receiver and perform walkthrough test. If audio moved around dropouts persist, mark these "Range" in the operating area and avoid them during the performance.

7 Channel Chart

7. DMK920 Series

No.	Channel	Frequency (Mhz)	
		MIC1	MIC2
1	A0	914.00 CH1	919.60 CH2
2	A1	916.00 CH3	918.40 CH4
3	A2	917.20 CH5	923.20 CH6
4	A3	917.60 CH7	922.40 CH8
5	A4	916.80 CH9	914.40 CH10
6	A5	915.60 CH11	922.80 CH12
7	A6	920.00 CH13	918.80 CH14
8	A7	922.00 CH15	915.20 CH16
9	A8	916.40 CH17	919.20 CH18
10	A9	918.00 CH19	914.80 CH20
11	B0	924.8 CH21	920.8 CH22
12	B1	921.6 CH23	920.4 CH24
13	B2	924 CH25	921.2 CH26
14	B3	923.6 CH27	925.2 CH28
15	B4	926.8 CH29	925.6 CH30
16	B5	924.4 CH31	926 CH32
17	B6	926.4 CH33	927.2 CH34

* MIC 1 and MIC 2 Channels synchronized as shown.

8 Specifications

8-1. Transmitter (DMK920TF)

Frequency Range	MHz	902 ~ 928 Mhz
RF Output Level	mW	MAX. 10
Channels	CH.	34
Channel Space	KHz	200
Carrier Wave Stability	ppm	15
Oscillation Mode		PLL
Power Consumption	mA	MAX. 60 (at 3.6V)
Antenna		λ /4 Helical
Power Requirments		3.6V / 850mA (NI-MH Rechargeable Battery)

8-2. Receiver (DMK920RCF)

Frequency Range	MHz	902 ~ 928 Mhz
Nominal Input Level	dBm	MIN. -90 (at SINAD 40dB)
S / N Ratio	dB	MIN. 70
Audio Output	Vp-p	1.0 V (1KHz \pm 50KHz)
Noise Reduction System		Compander I.C
Channel Space	KHz	200
Carrier Wave Stability	ppm	15
Oscillation Mode		PLL
Power Consumption	mA	MAX. 300/2CH
Antenna		λ /4 Helical
Power Requirments		DC 12V 1A

limited warranty statement

LIMITED WARRANTY

DigitalCom Corporation hereafter referred to as DigitalCom, warrants to the original consumer of a d'com product that the product will be free of defects in materials and/or workmanship for the periods indicated. This warranty is applicable to all d'com models and only in the fifty (50) United States;

LABOR : 1 year PARTS : 1 year

LIMITED WARRANTY

If during the first 1 year that immediately follows the purchase date, your new d'com product is covered by this warranty and DigitalCom and/or its authorized service center will repair or replace the defective part without charge for parts or labor.

DigitalCom reserves the right to utilize reconditioned parts in repairing these products and/or to use reconditioned units as warranty replacements.

THIS WARRANTY IS THE ONLY EXPRESS WARRANTY WHICH DIGITALCOM MAKES IN CONNECTION WITH THESE PRODUCTS. ANY IMPLIED WARRANTY APPLICABLE TO THE PRODUCT, INCLUDING THE WARRANTY OF MERCHANT ABILITY IS LIMITED TO THE DURATION OF THE EXPRESS WARRANTY. DigitalCom EXCLUDES AND SHALL NOT BE LIABLE IN ANY EVENT FOR INCIDENTAL OR CONSEQUENTIAL DAMAGES.

Some states do not allow limitations that relate to implied warranties and/or the exclusion of incidental or consequential damages. Therefore, these limitations and exclusions may not apply to you. This warranty gives you specific legal rights. You may also have other rights which vary from state to state.

CONSUMER RESPONSIBILITIES

If warranty service should be required, it is necessary that the consumer assume certain responsibilities.

1. You must complete and return warranty registration card to DigitalCom customer service department.
2. Contact DigitalCom Customer Service (82-32-624-1980) for a Return Authorization Number (RA#).
3. Return your product to DigitalCom or an authorized service center with proof of purchase (sales receipt, etc.), RA# and detail description of the problem(s).
4. Shipping and/or insurance costs are the consumer's responsibility. DigitalCom is NOT responsible for shipping costs either from or to the consumer.
5. Units shipped for service should be packed securely. It is recommended to use the original box for the product and double box it to avoid shipping damage. DigitalCom is NOT responsible for any damage during shipping.
6. Your owner's manual contains important safety and operating instructions. It is your responsibility to be aware of the contents of the manual and to follow all safety precautions.

EXCLUSIONS

This limited warranty provided by DigitalCom does not cover;

1. Products which have been subject to abuse, accident, alteration, modification, tampering, negligence, misuse, faulty installation, lack of reasonable care, or if repaired or serviced by anyone other than a service facility authorized by DigitalCom to render such service, or if affixed any attachment not provided with the products, or if the model number or serial number has been altered, tampered with, defaced or removed.
2. Initial installation and removal for repair.
3. Shipping costs to Mediasync or authorized service center for repair service.
4. Shipping costs to return the repaired product to customer.
5. Operational adjustments covered in the Owner's Manual, normal maintenance, video and audio head cleaning.
6. Damage that occurs in shipment, due to act of God, and cosmetic damage.
7. Accessories and batteries

CUSTOMER SERVICE

DigitalCom Corp.
Rm.801, Bucheon Technopark III 36-1Samjeong-dong, Ojeong-gu, Bucheon-city, Gyeonggi-do, Korea
Tel : 82-32-624-1980(Ext.638) Fax:82-32-624-1986
Homepage: <http://www.digitalcoms.net> / <http://www.mic4u.co.kr>

Keep sales receipt and owner's manual with this document. Do not mail.

User Information

Operation is subject to the following two conditions:

- (1) This Device may not cause harmful interface, and
- (2) This device must accept any interference received, including interference that may cause undesired operation.

This device complies with Part 15 of the FCC Results.

Note: This equipment has been tested and found to comply with the limits for CLASS B digital device, pursuant to Part 15 of FCC Rules. These limits are designed to provide reasonable protection against harmful interference when the equipment is operated in a commercial environment. This equipment generates, uses and can radiate radio frequency energy and, if not installed and used in accordance with the instructions, may cause harmful interference to radio communications. However, there is no guarantee that interference will not occur in a particular installation. If this equipment does cause harmful interference to radio or television reception, which can be determined by turning the equipment off and on, the user is encouraged to try correct the interference by one or more of the following measures:

- 1.1. Reorient or relocate the receiving antenna.
- 1.2. Increase the separation between the equipment and receiver.
- 1.3. Connect the equipment into an outlet on a circuit different from that to which receiver is connected.
- 1.4. Consult the dealer or experienced radio/TV technician for help.

WARNING

Changes or modifications not expressly approved by the manufacturer could void the user's authority to operate the equipment.

"CAUTION: Exposure to Radio Frequency Radiation.

Antenna shall be mounted in such a manner to minimize the potential for human contact during normal operation. The antenna should not be contacted during operation to avoid the possibility of exceeding the FCC radio frequency exposure limit.