

Internal photos FLIR-K1870 camera.



*Figur 1 FLIR-K1340 Display side.*



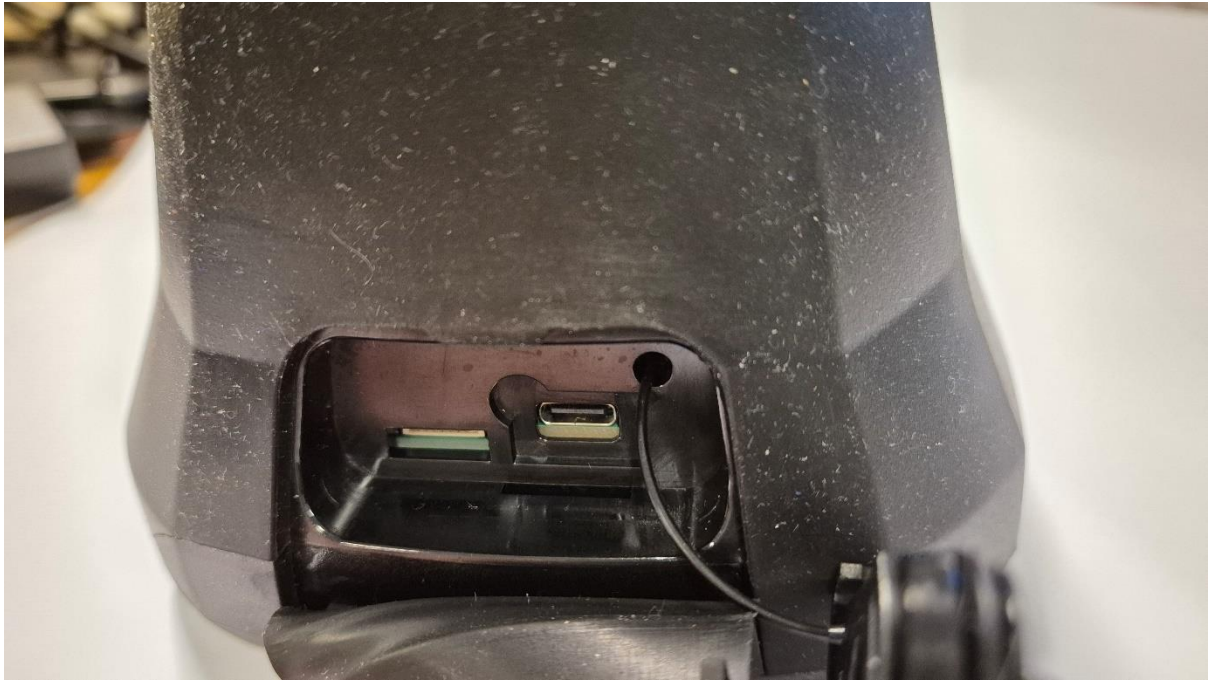
*Figur 2 FLIR K1340 Left side.*



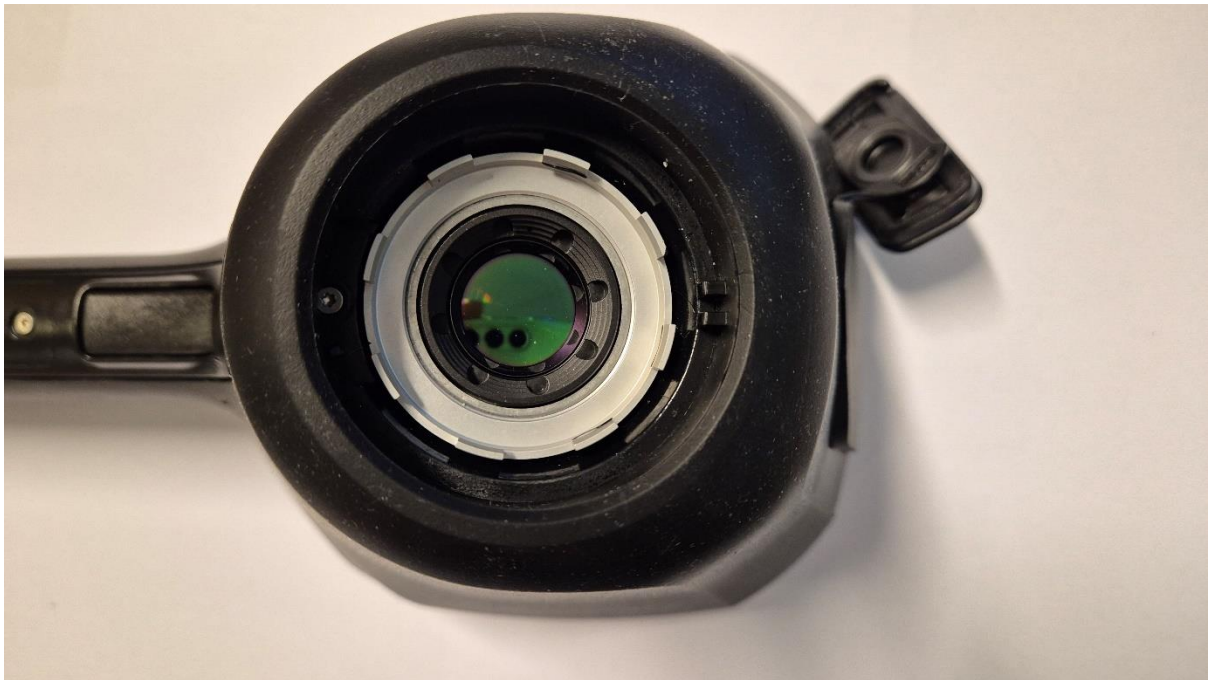
*Figur 3 FLIR-K1340 Right side.*



*Figur 4 FLIR-K1340 Front side.*



*Figur 5 Top view, USB C connector visible.*

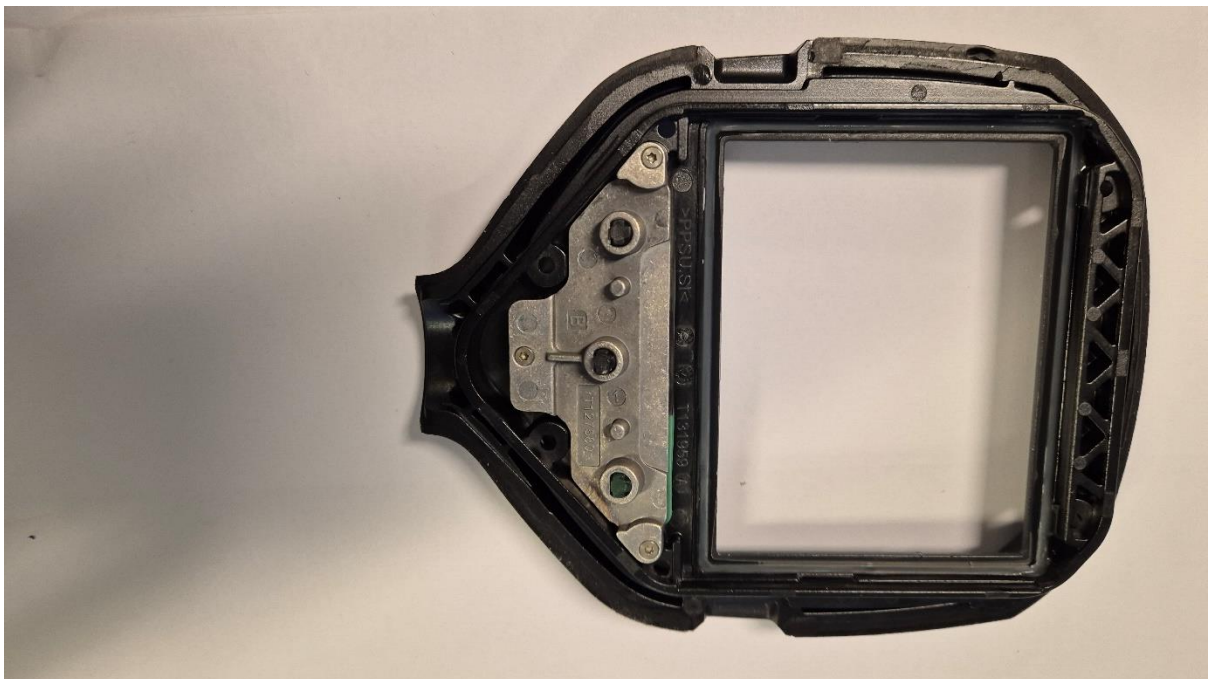


*Figur 6 Front cone removed.*

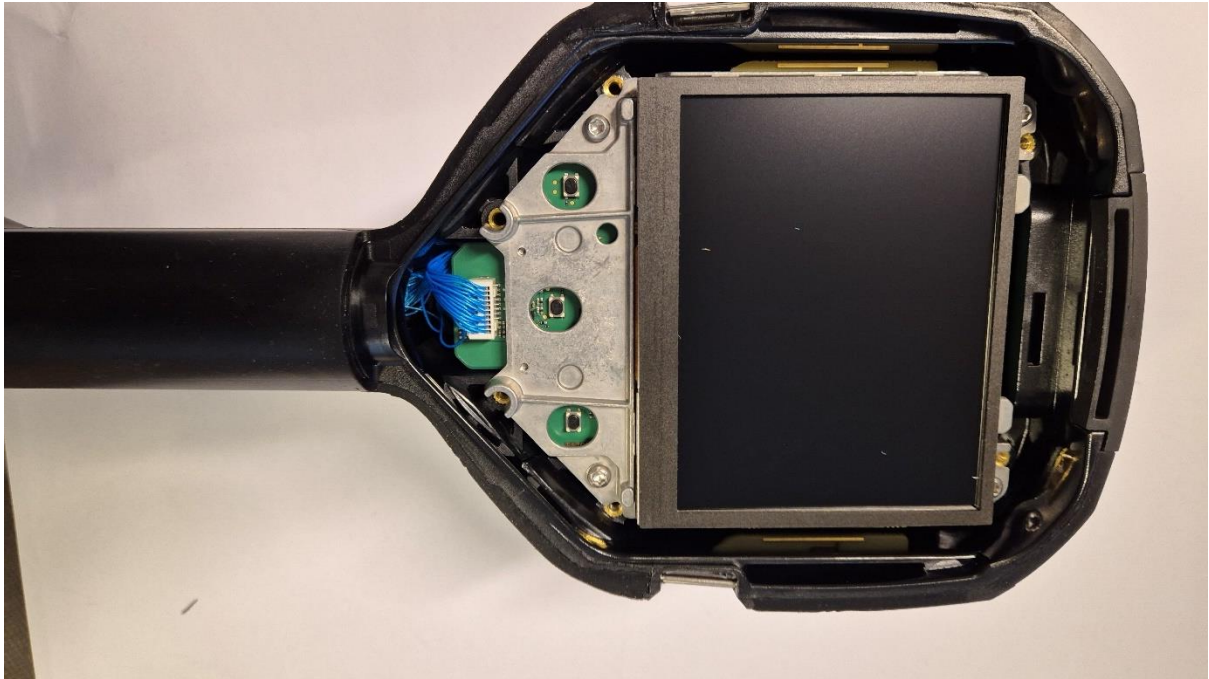




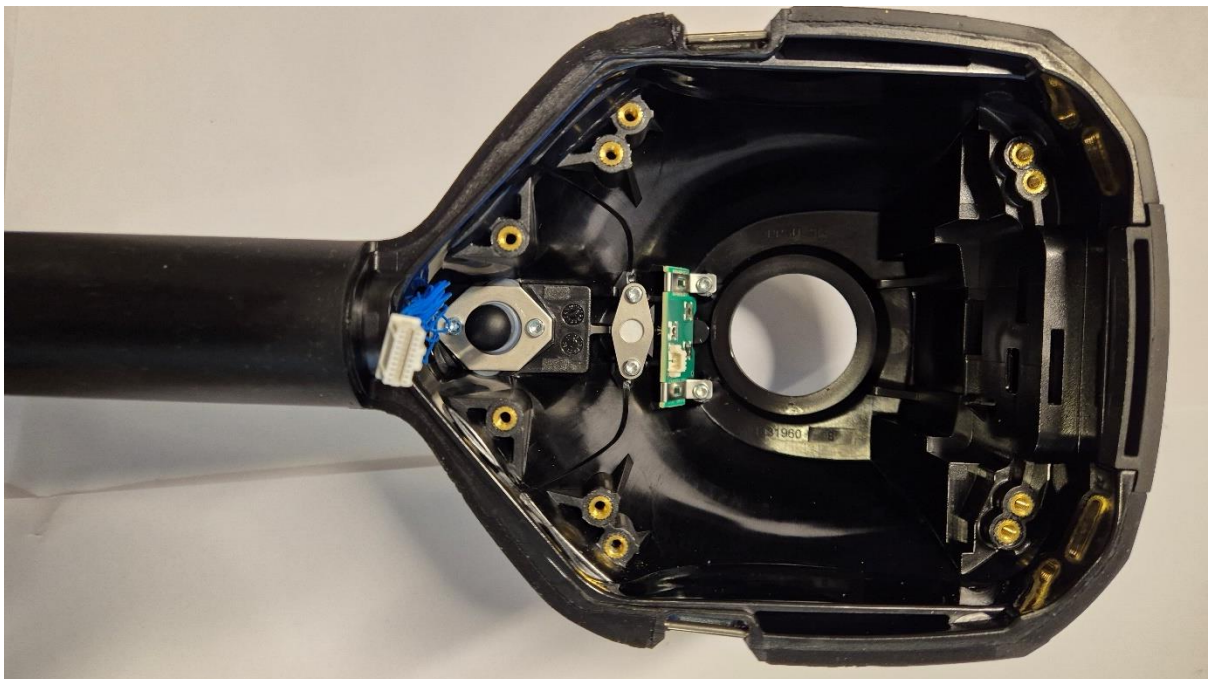
*Figur 7 Display side, cover removed.*



*Figur 8 Window, back side.*

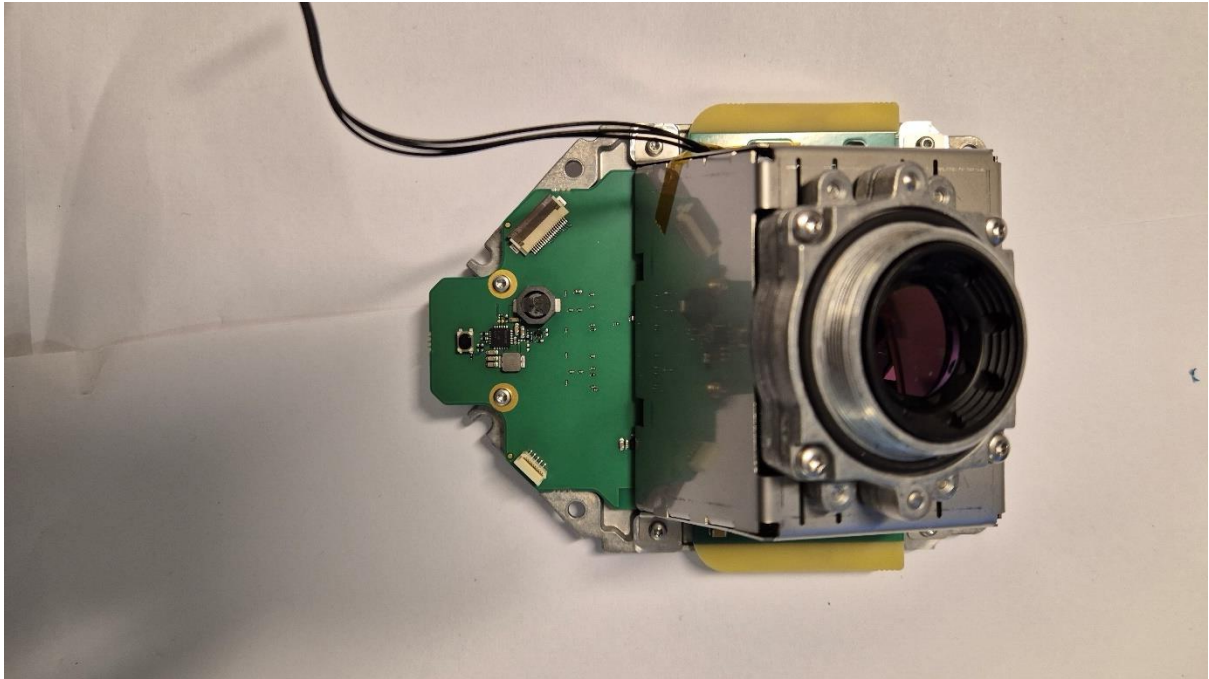


*Figur 9 Display side, Window removed.*

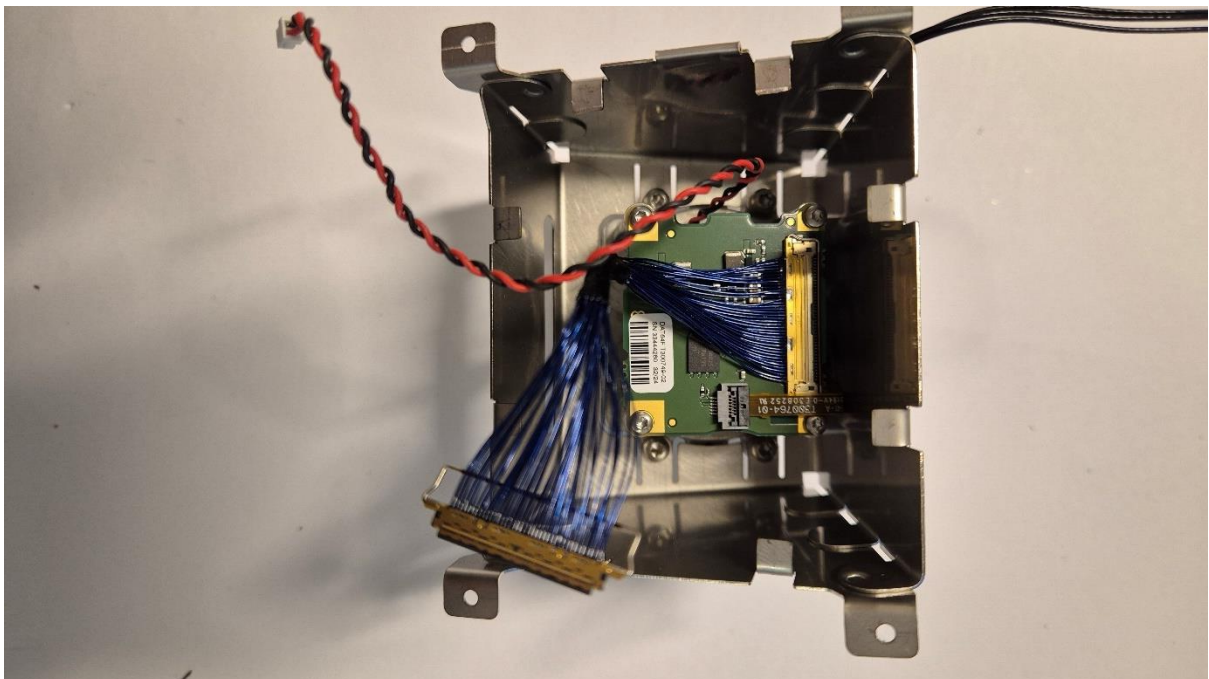


*Figur 10 Display side, Core removed.*

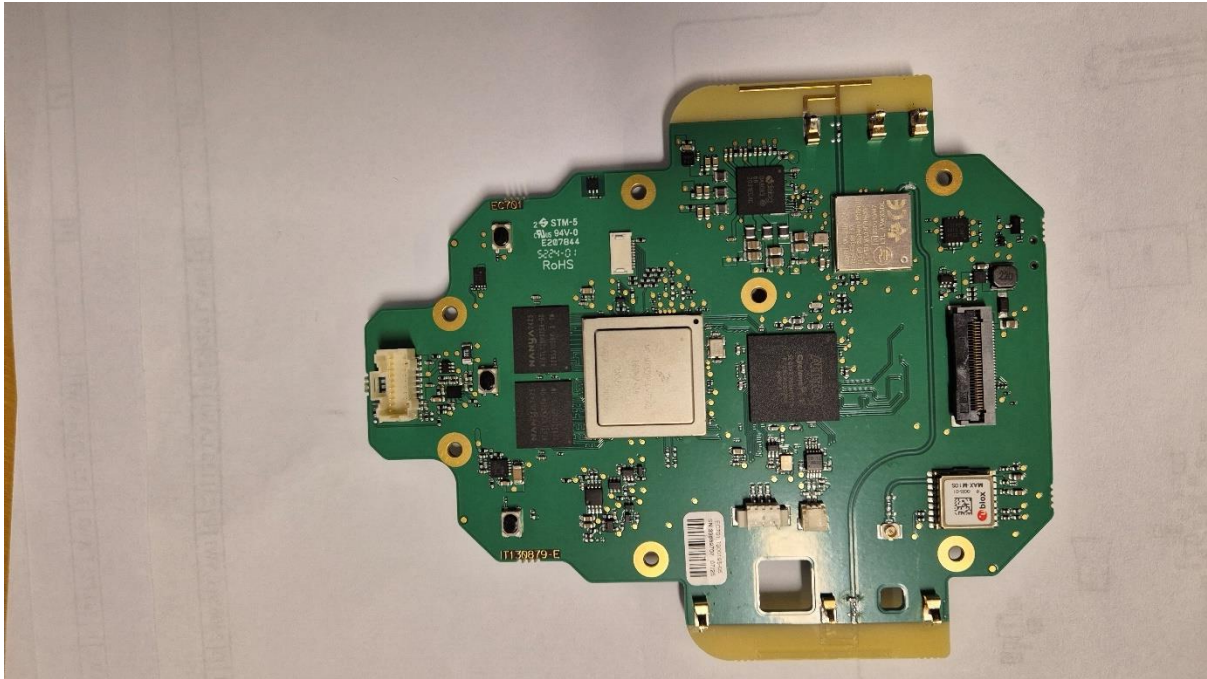




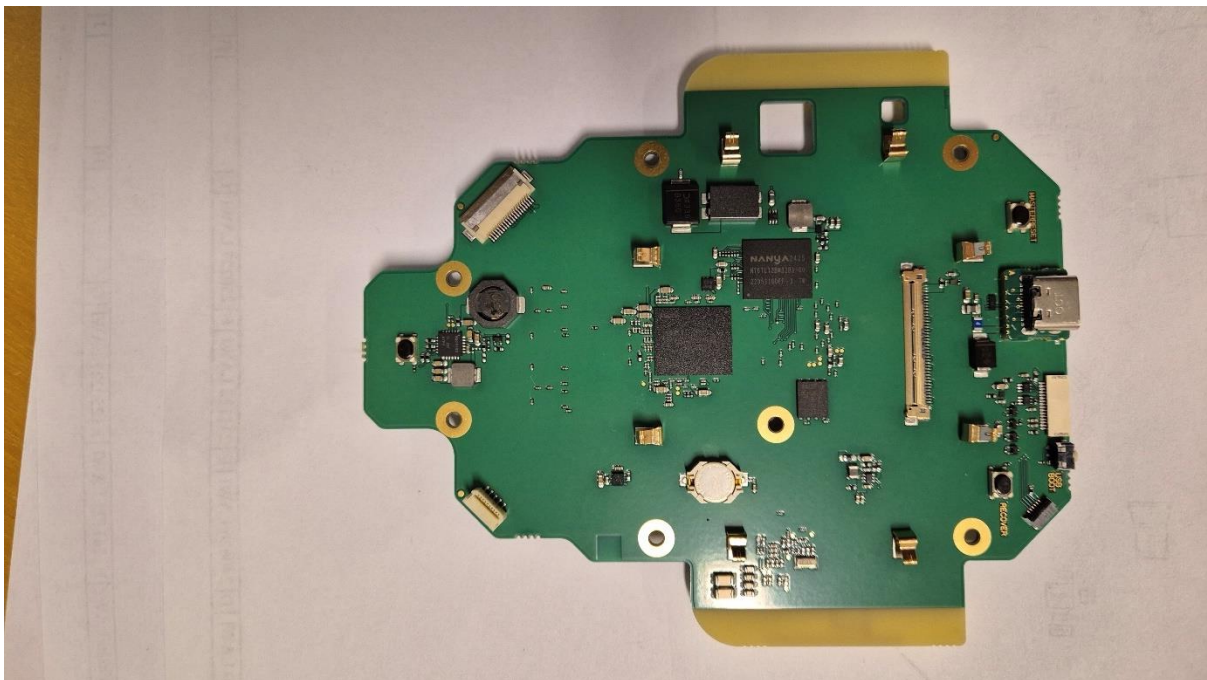
*Figur 11 Core, front side.*



*Figur 12 Core, computer board removed.*

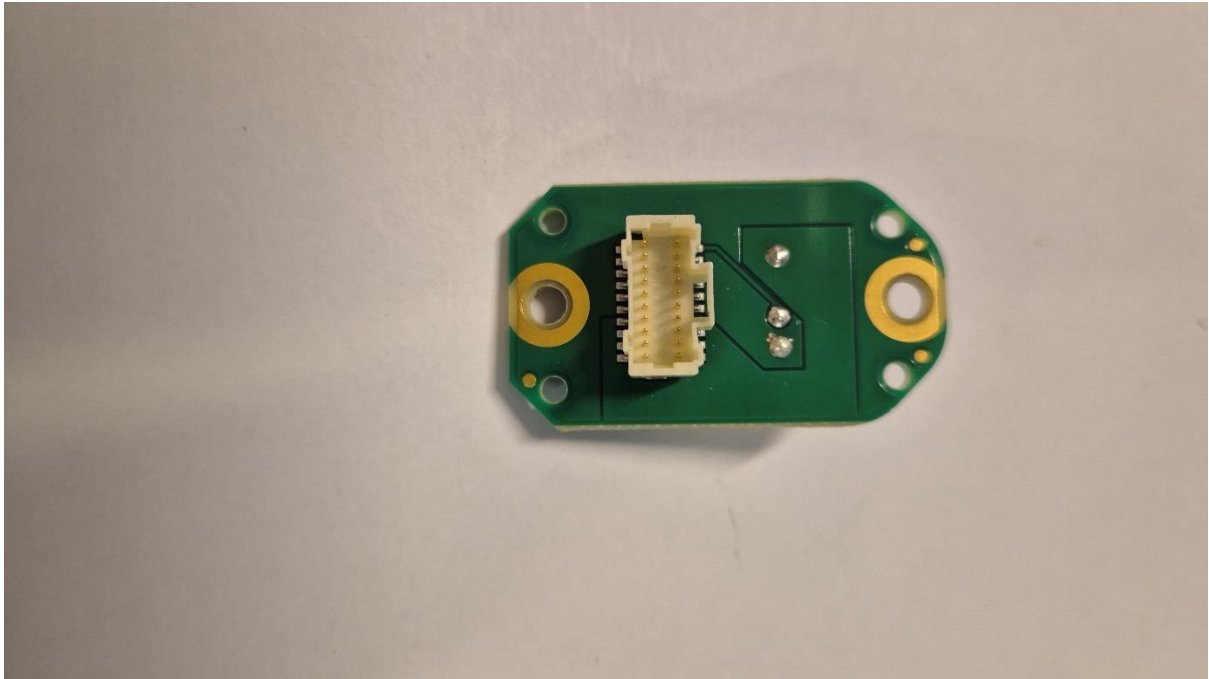


Figur 13 EC 701, computer board, primary side.



Figur 14 EC 701, secondary side.



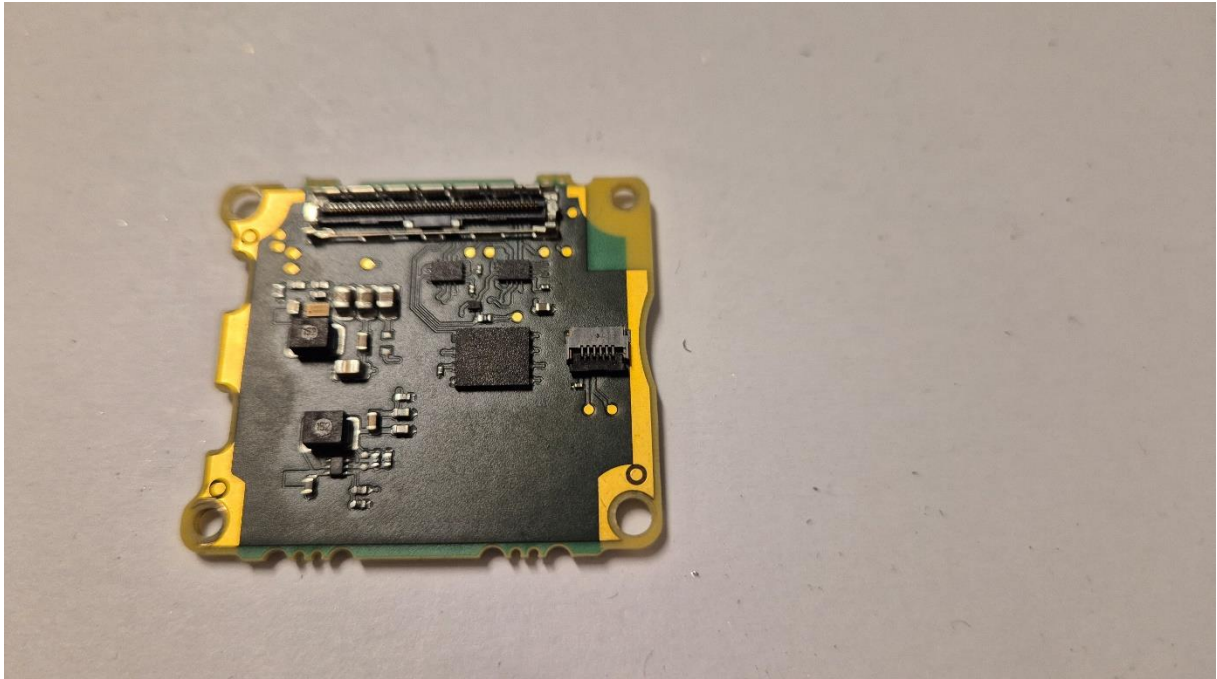


*Figur 15 LUBI battery interface board.*

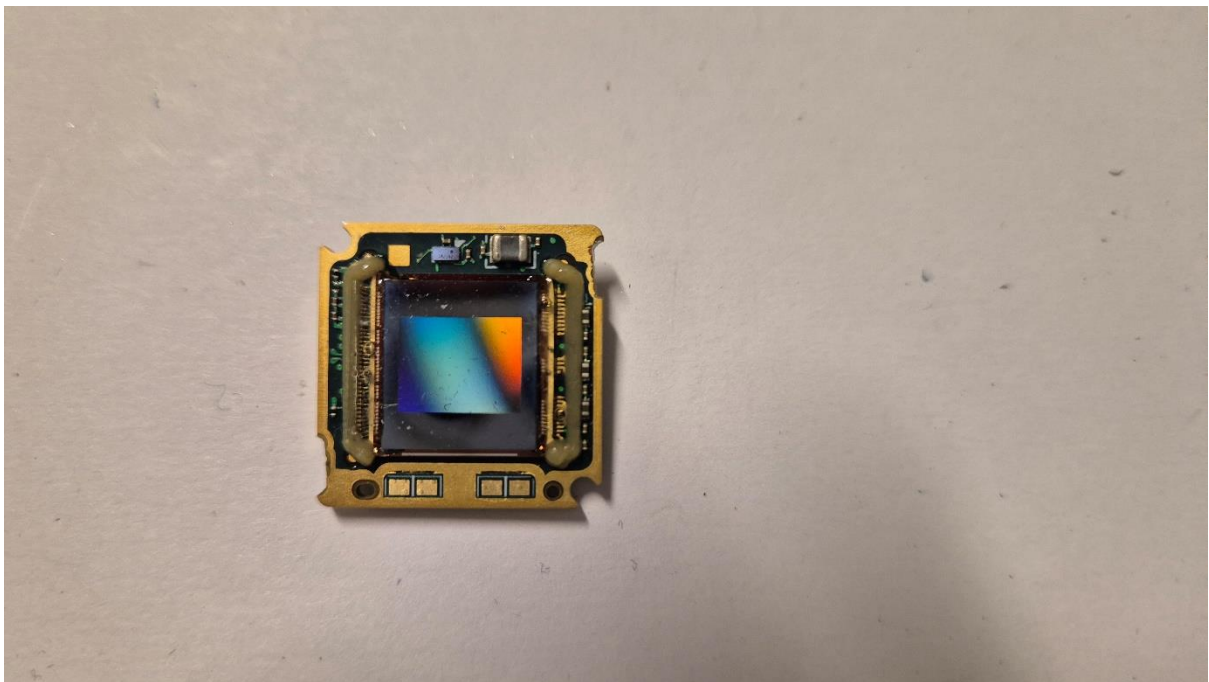


*Figure 1 DAT64F Primary side*





*Figure 2 DAT64F Secondary side*



*Figure 3 Detector*

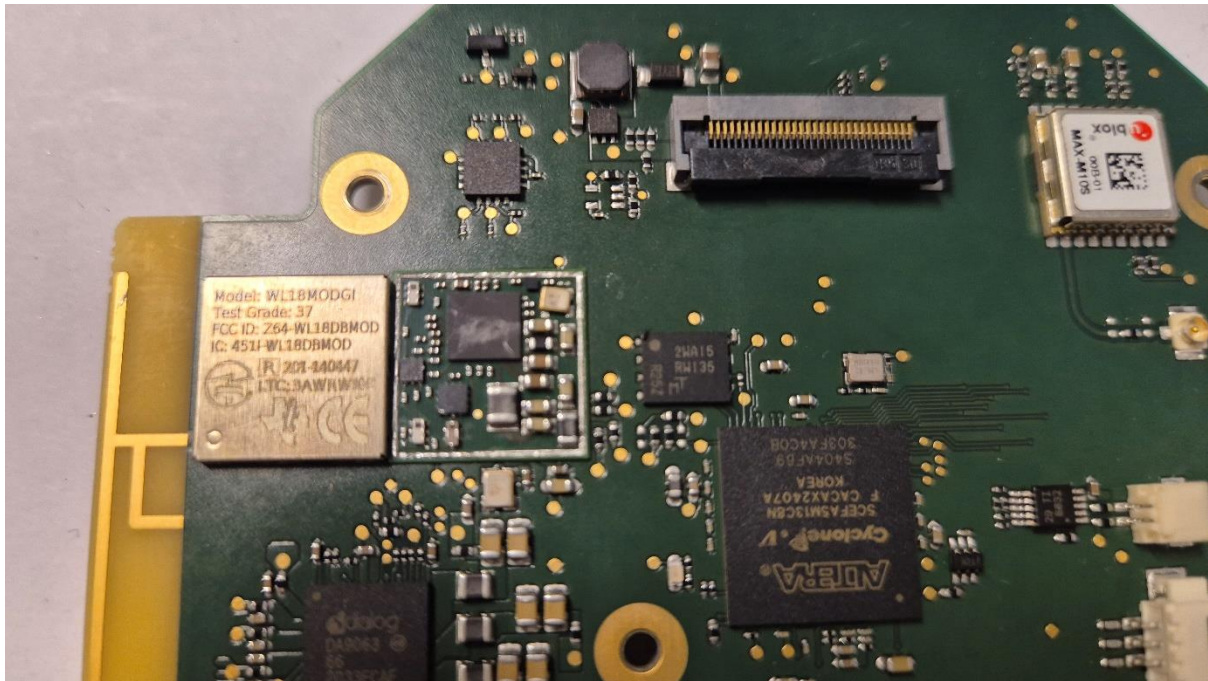


Figure 4 EC701 with detector module, cover off.



