

## Internal photos FLIR-i1845 camera



*Figur 1 Back side, i65 models*



*Figur 2 Back side, i64 models*



*Figur 3 Back side, i35 models*



*Figur 4 Back side, i34 models*

The exterior of rest of the camera is identical between the different camera models, except for the plate with model name.



*Figur 5 FLIR-i1845 Display side.*



*Figur 6 FLIR-i1845 Left side.*





Figur 7 FLIR-i1845 Right side.



Figur 8 FLIR-i1845 Front side.

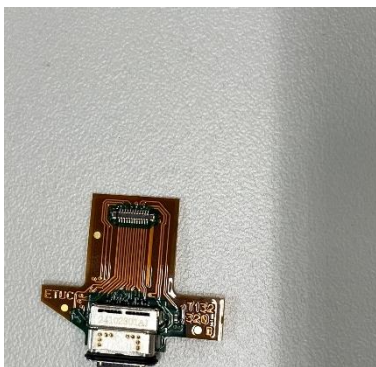


*Figur 9 Bottom view, USB C connector visible.*





*Figur 10 Everything connected.*



*Figur 11 ETUC Top*



*Figur 12 ETUC bot*



*Figur 13 Antenna LTE main*



*Figur 14 Antenna LTE main, bottom*

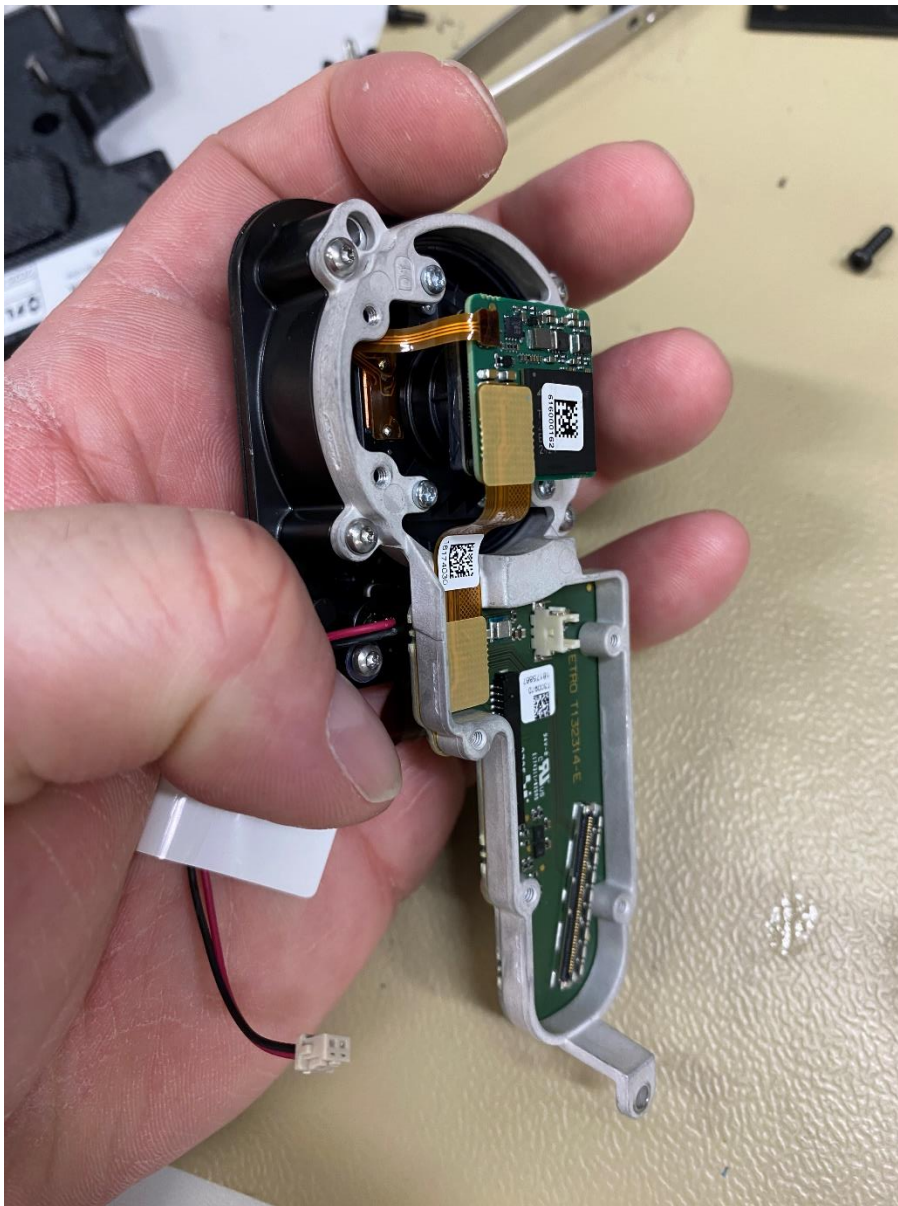


*Figur 15 ETBA top*





Figur 16 ETBA bot



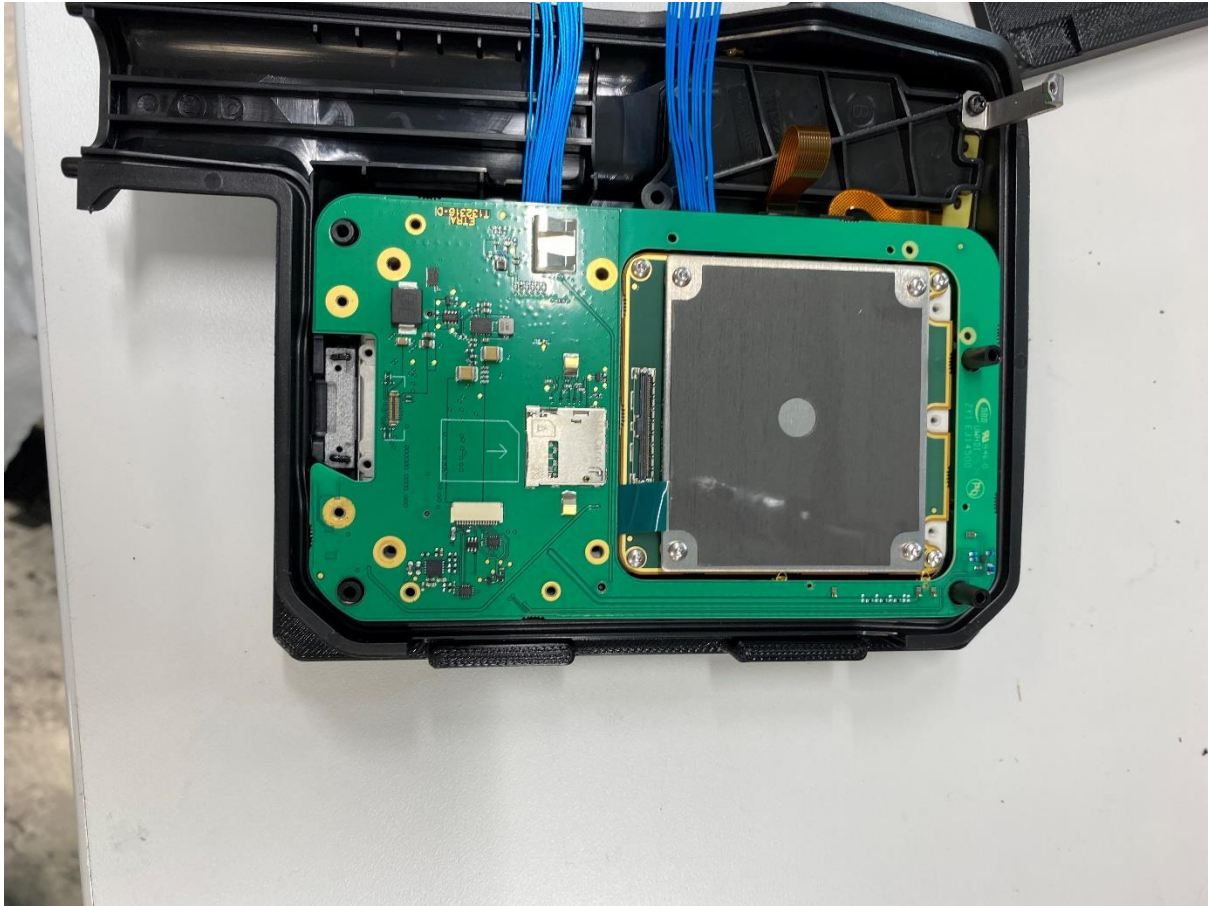
Figur 17 Radiometry unit with ETRO and REM13



*Figur 18 ETRO top*



*Figur 19 ETRO secondary side.*

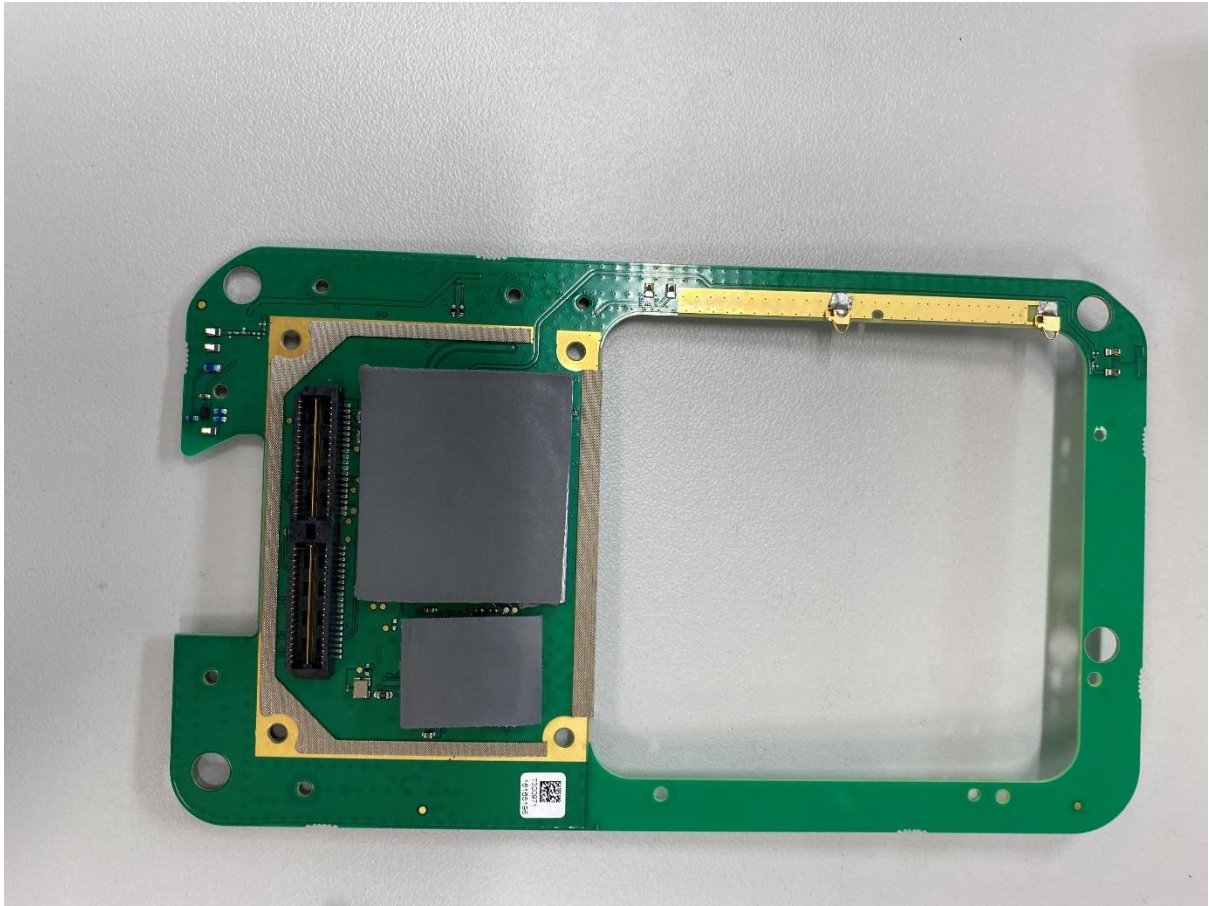


*Figur 20 ETRA Top*





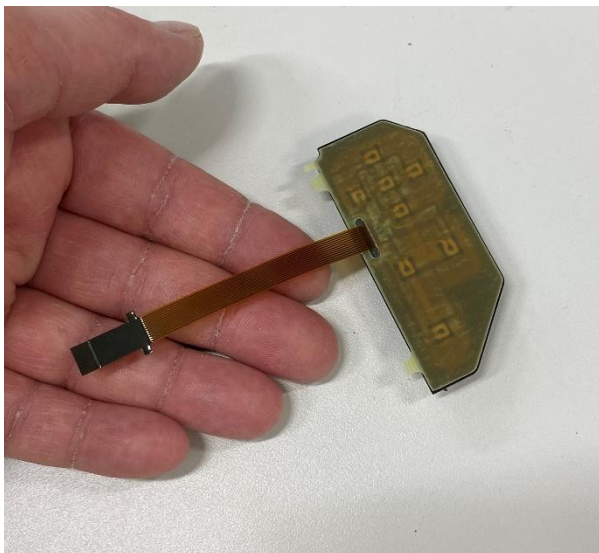
*Figur 21 ETRA without radio module covers*



*Figur 22 ETRA bottom*

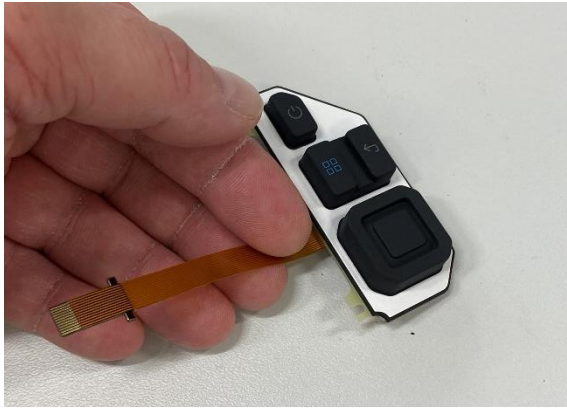


*Figur 23 Keypad ETKÉ mounted*



*Figur 24 Keypad ETKÉ bottom*





*Figur 25 Keypad ETKE top*



*Figur 26 ETAL mounted*



*Figur 27 ETAL top*



*Figur 28 Diversity antenna and cables mounted mounted*



*Figur 29 LTE diversity, BT/WiFi and GNSS antenna*



*Figur 30 LTE diversity, BT/WiFi and GNSS antenna*





Figur 31 EACO2 mounted



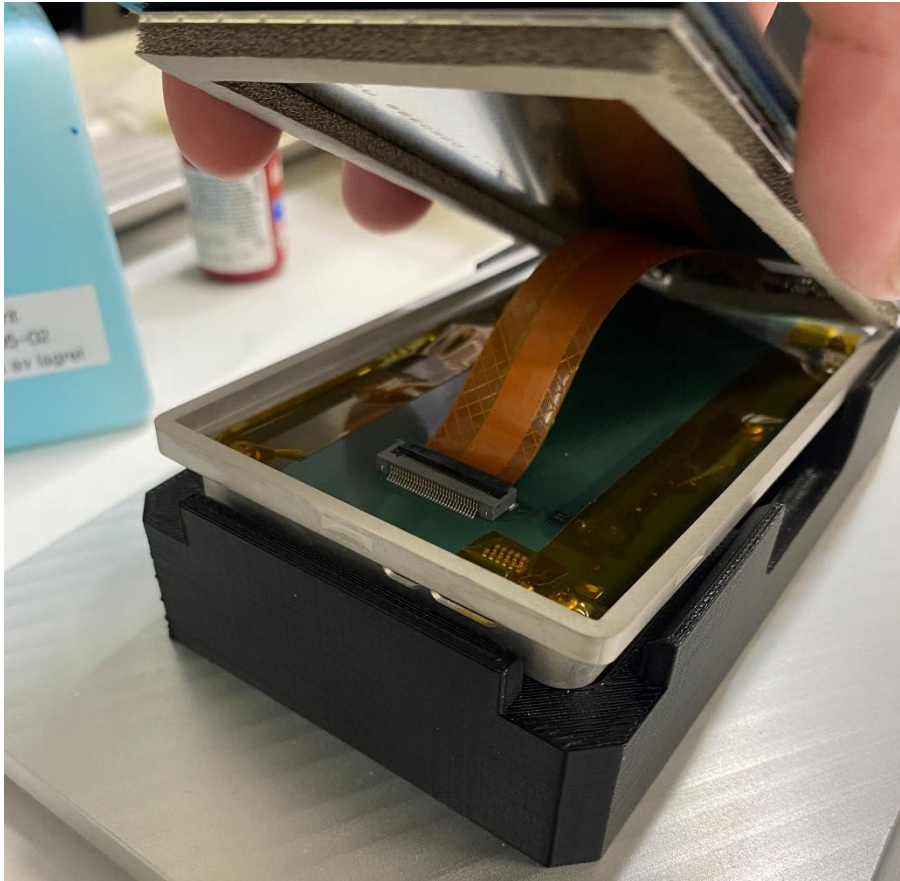
Figur 32 EACO2 top



Figur 33 EACO2 Bottom



*Figur 34 Screen glued in place*

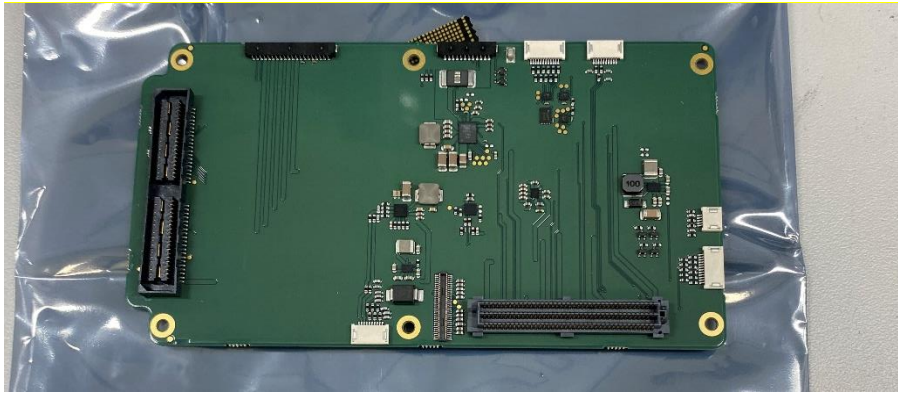


Figur 35 Screen connected

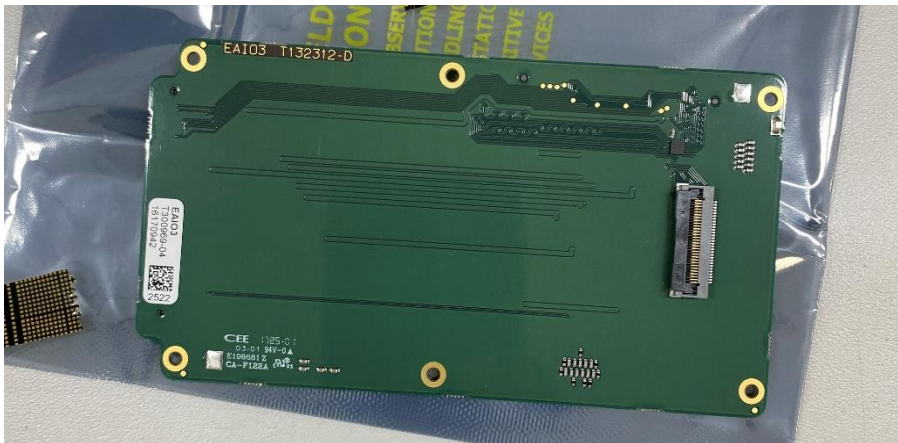


Figur 36 EAI03 mounted





Figur 37 EAI03 Top



Figur 38 EAI03 Bottom