

LTE Band 12 Body Rear Middle with QPSK_10MHz_1RB_High

Date/Time: 2017-2-22

Electronics: DAE4 Sn786

Medium: Body 750 MHz

Medium parameters used (interpolated): $f = 707.5$ MHz; $\sigma = 0.899$ S/m; $\epsilon_r = 54.417$; $\rho = 1000$ kg/m³

Ambient Temperature: 22.7°C Liquid Temperature: 22.2°C

Communication System: UID 0, 4G_LTE_FDD (0) Frequency: 707.5 MHz Duty Cycle: 1:1

Probe: ES3DV3 - SN3151 ConvF (6.12, 6.12, 6.12);;

Rear side Mid 1BR_High/Area Scan (111x61x1): Interpolated grid: dx=1.500 mm, dy=1.500 mm

Maximum value of SAR (interpolated) = 0.435 W/kg

Rear side Mid 1BR_High/Zoom Scan (5x5x7)/Cube 0: Measurement grid: dx=8mm, dy=8mm, dz=5mm

Reference Value = 22.04 V/m; Power Drift = 0.11 dB

Peak SAR (extrapolated) = 0.511 W/kg

SAR(1 g) = 0.426 W/kg; SAR(10 g) = 0.337 W/kg

Maximum value of SAR (measured) = 0.443 W/kg

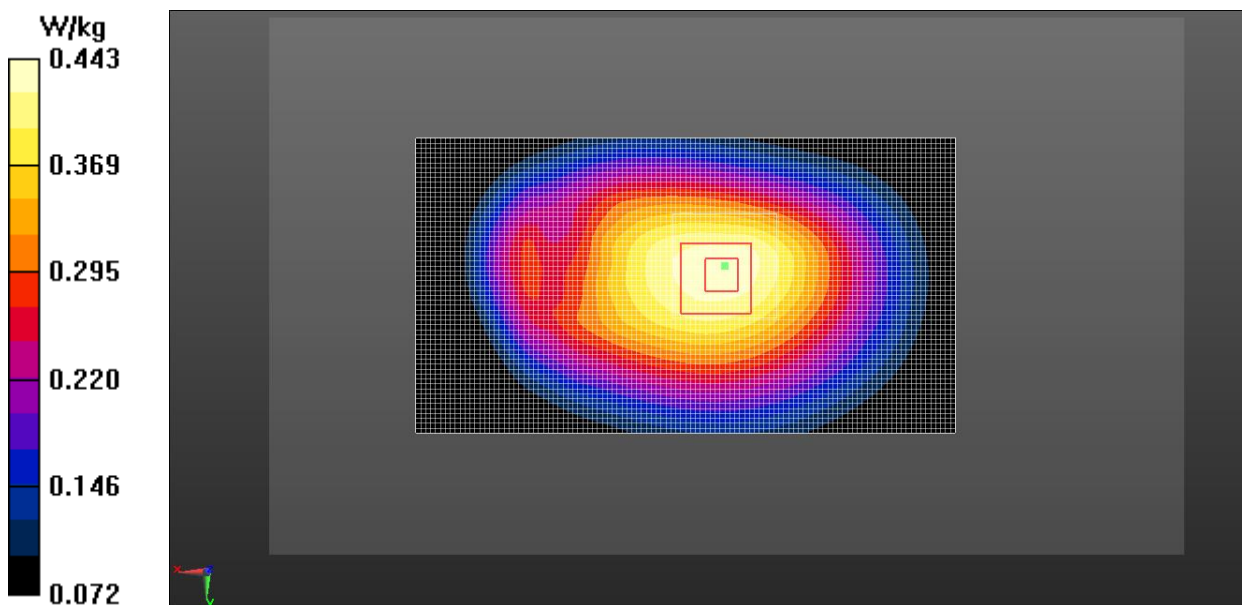


Fig.18 LTE Band 12 CH23095

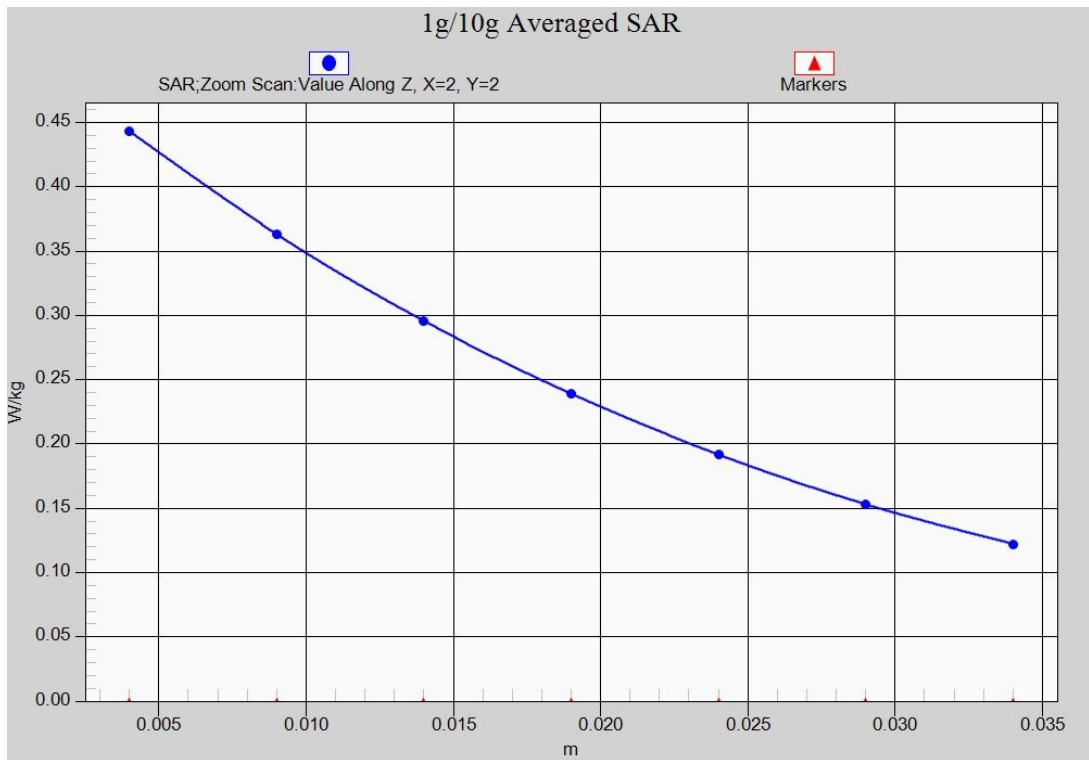


Fig.18-1 Z-Scan at power reference point (Band 12 CH23095)

LTE Band 13 Left Cheek Middle with QPSK_10MHz_1RB_Middle

Date/Time: 2017-2-22

Electronics: DAE4 Sn786

Medium: Head 750 MHz

Medium parameters used: $f = 782$ MHz; $\sigma = 0.942$ S/m; $\epsilon_r = 40.717$; $\rho = 1000$ kg/m³

Ambient Temperature: 22.3°C Liquid Temperature: 21.8°C

Communication System: UID 0, 4G_LTE_FDD (0) Frequency: 782 MHz Duty Cycle: 1:1

Probe: ES3DV3 - SN3151 ConvF (6.34, 6.34, 6.34);;

Left cheek Mid 1RB_Mid/Area Scan (61x111x1): Measurement grid: dx=15mm, dy=15mm

Maximum value of SAR (interpolated) = 0.326 W/kg

Left cheek Mid 1RB_Mid/Zoom Scan (5x5x7)/Cube 0: Measurement grid: dx=8mm, dy=8mm, dz=5mm

Reference Value = 6.98 V/m; Power Drift = 0.11 dB

Peak SAR (extrapolated) = 0.332 W/kg

SAR(1 g) = 0.271 W/kg; SAR(10 g) = 0.205 W/kg

Maximum value of SAR (measured) = 0.280 W/kg

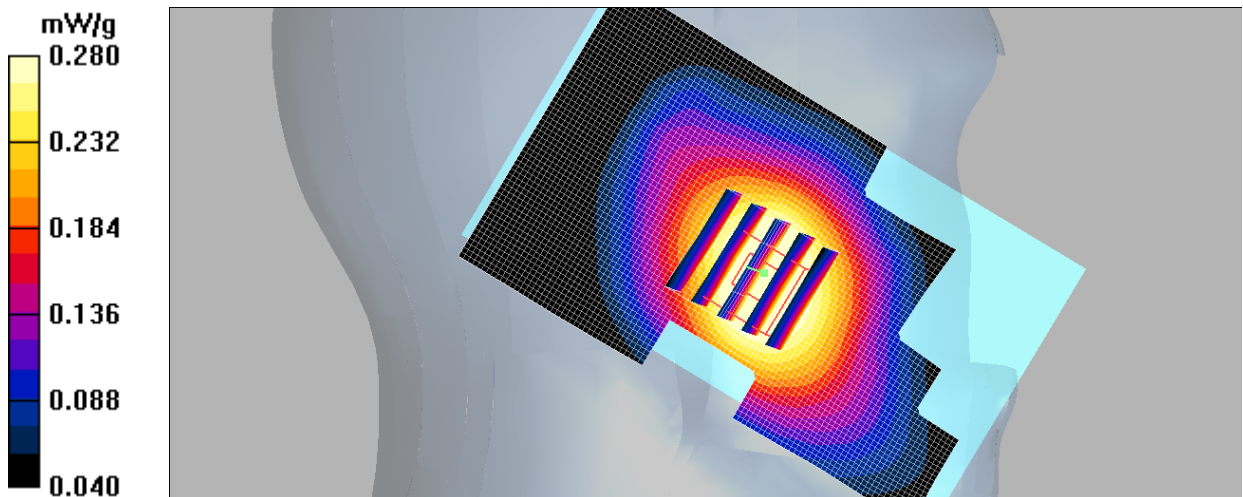


Fig.19 LTE Band 13 CH23230

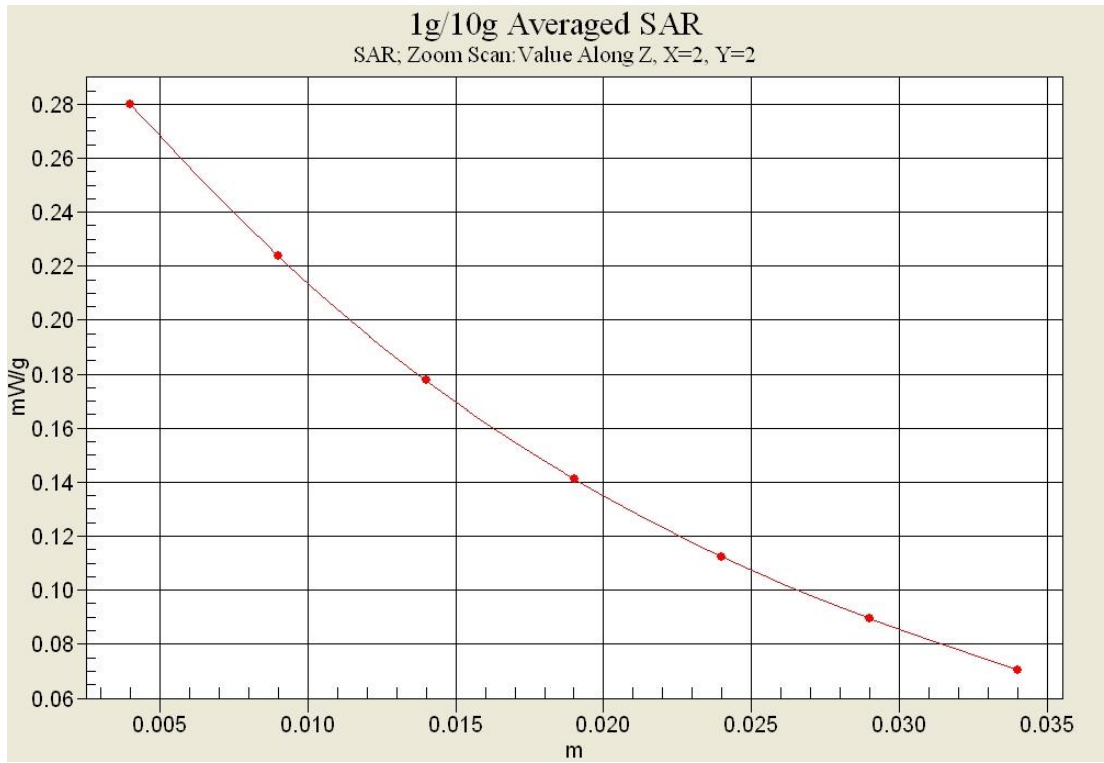


Fig.19-1 Z-Scan at power reference point (Band 13 CH23230)

LTE Band 13 Body Front Middle with QPSK_10MHz_1RB_Middle

Date/Time: 2017-2-22

Electronics: DAE4 Sn786

Medium: Body 750 MHz

Medium parameters used: $f = 782$ MHz; $\sigma = 0.963$ S/m; $\epsilon_r = 53.561$; $\rho = 1000$ kg/m³

Ambient Temperature: 22.7°C Liquid Temperature: 22.2°C

Communication System: UID 0, 4G_LTE_FDD (0) Frequency: 782 MHz Duty Cycle: 1:1

Probe: ES3DV3 - SN3151 ConvF (6.12, 6.12, 6.12);

Front side Mid 1RB_Mid/Area Scan (61x121x1): Measurement grid: dx=15mm, dy=15mm

Maximum value of SAR (interpolated) = 0.248 W/kg

Front side Mid 1RB_Mid/Zoom Scan (5x5x7)/Cube 0: Measurement grid: dx=8mm, dy=8mm, dz=5mm

Reference Value = 14.1 V/m; Power Drift = 0.10 dB

Peak SAR (extrapolated) = 0.332 W/kg

SAR(1 g) = 0.210 W/kg; SAR(10 g) = 0.145 W/kg

Maximum value of SAR (measured) = 0.245 W/kg

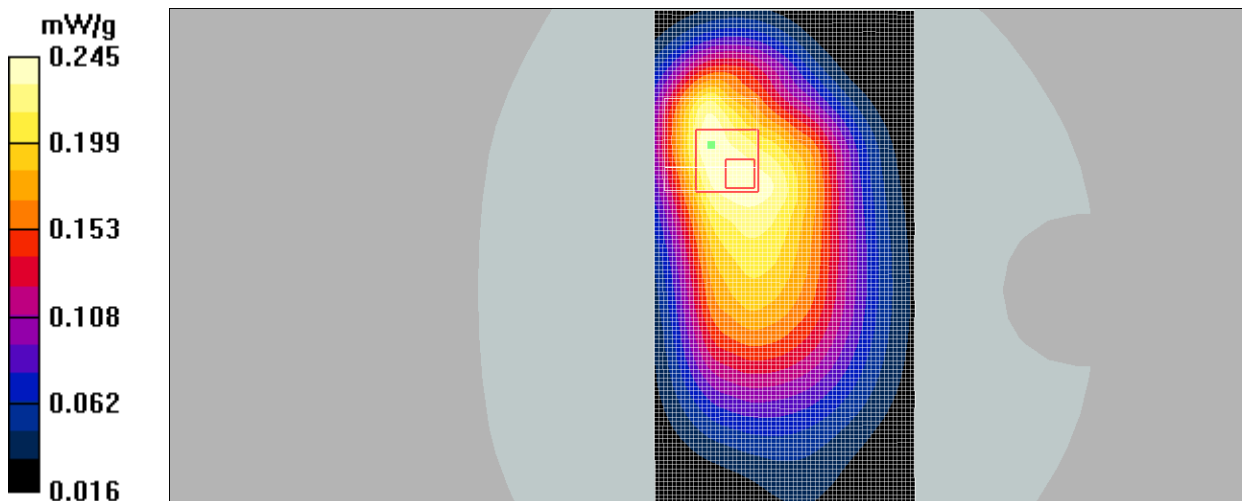


Fig.20 LTE Band 13 CH23230

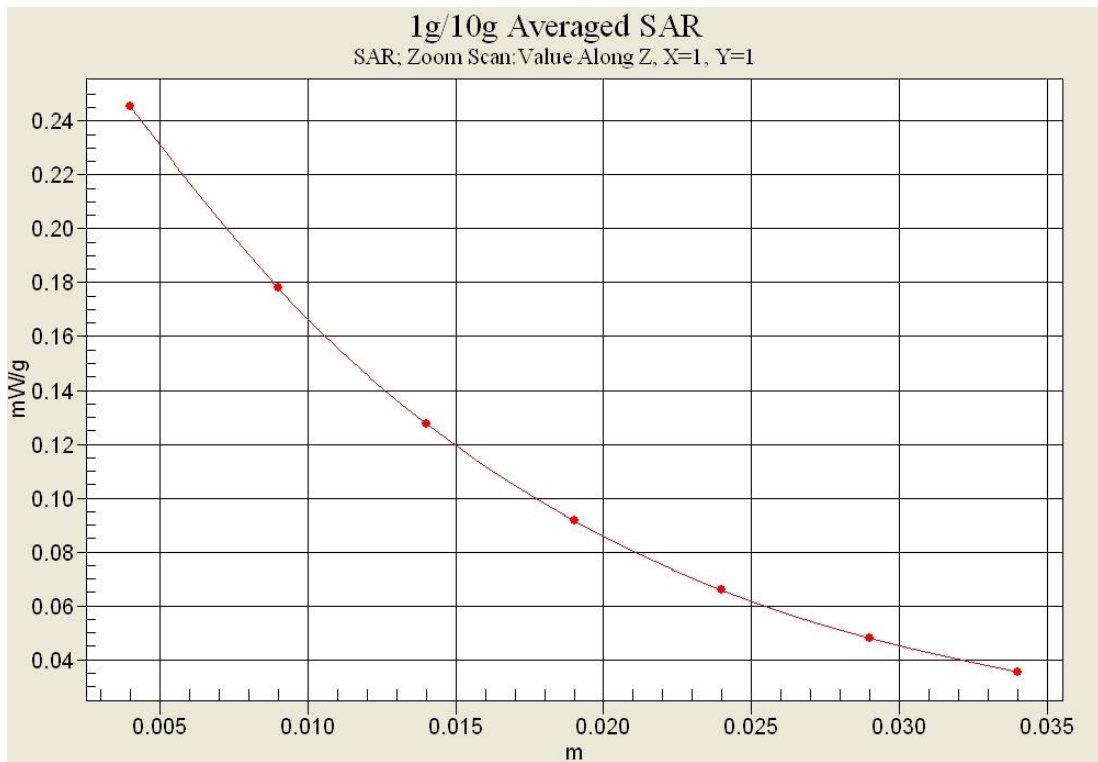


Fig.20-1 Z-Scan at power reference point (Band 13 CH23230)

LTE Band 17 Left Cheek High with QPSK_10MHz_1RB_Middle

Date/Time: 2017-2-22

Electronics: DAE4 Sn786

Medium: Head 750 MHz

Medium parameters used: $f = 711$ MHz; $\sigma = 0.878$ S/m; $\epsilon_r = 41.672$; $\rho = 1000$ kg/m³

Ambient Temperature: 22.3°C Liquid Temperature: 21.8°C

Communication System: UID 0, 4G_LTE_FDD (0) Frequency: 711 MHz Duty Cycle: 1:1

Probe: ES3DV3 - SN3151 ConvF (6.34, 6.34, 6.34);

Left Cheek High 1RB_Mid/Area Scan (61x111x1): Interpolated grid: dx=1.500 mm, dy=1.500 mm

Maximum value of SAR (interpolated) = 0.476 W/kg

Left Cheek High 1RB_Mid/Zoom Scan (5x5x7)/Cube 0: Measurement grid: dx=8mm, dy=8mm, dz=5mm

Reference Value = 5.772 V/m; Power Drift = 0.07 dB

Peak SAR (extrapolated) = 0.558 W/kg

SAR(1 g) = 0.459 W/kg; SAR(10 g) = 0.352 W/kg

Maximum value of SAR (measured) = 0.475 W/kg

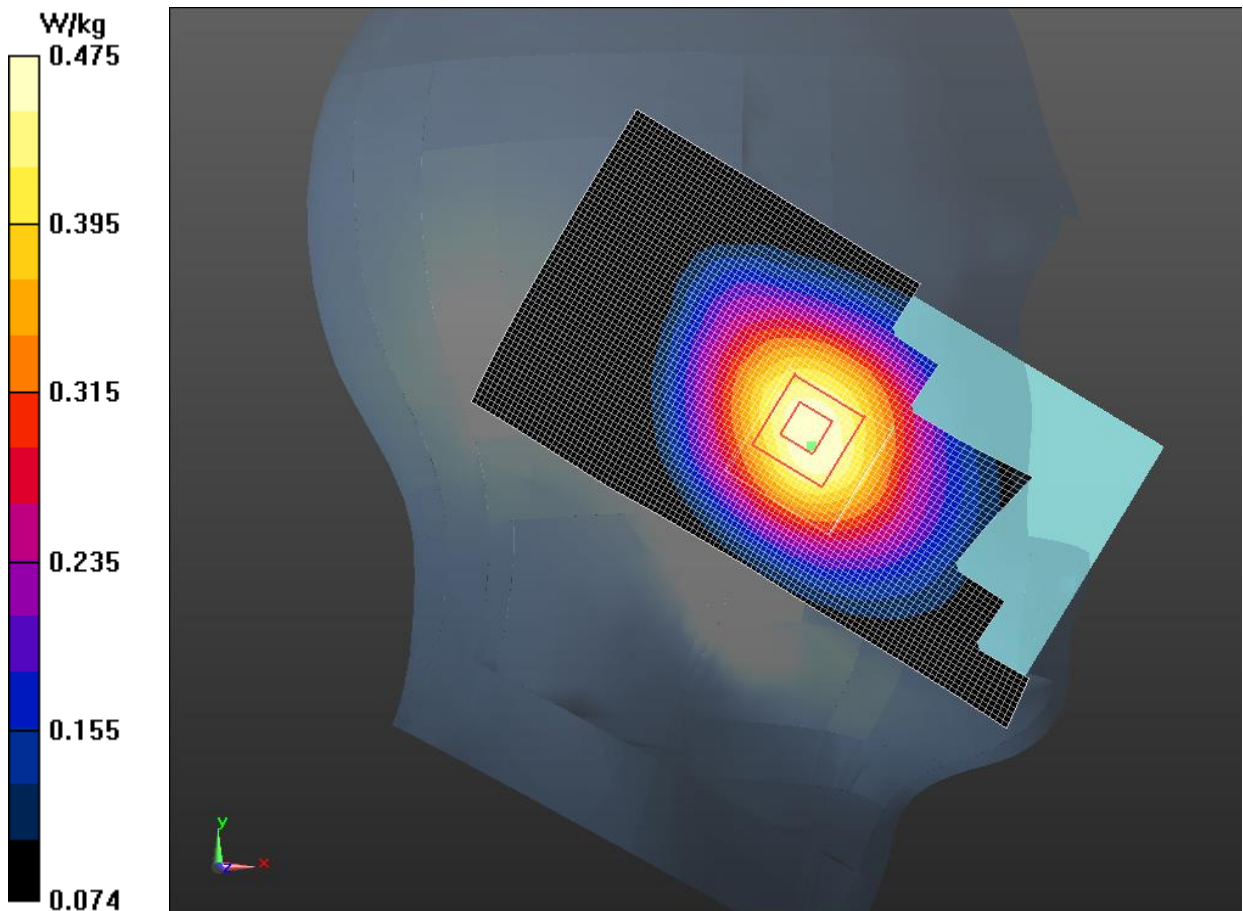


Fig.21 LTE Band 17 CH23800

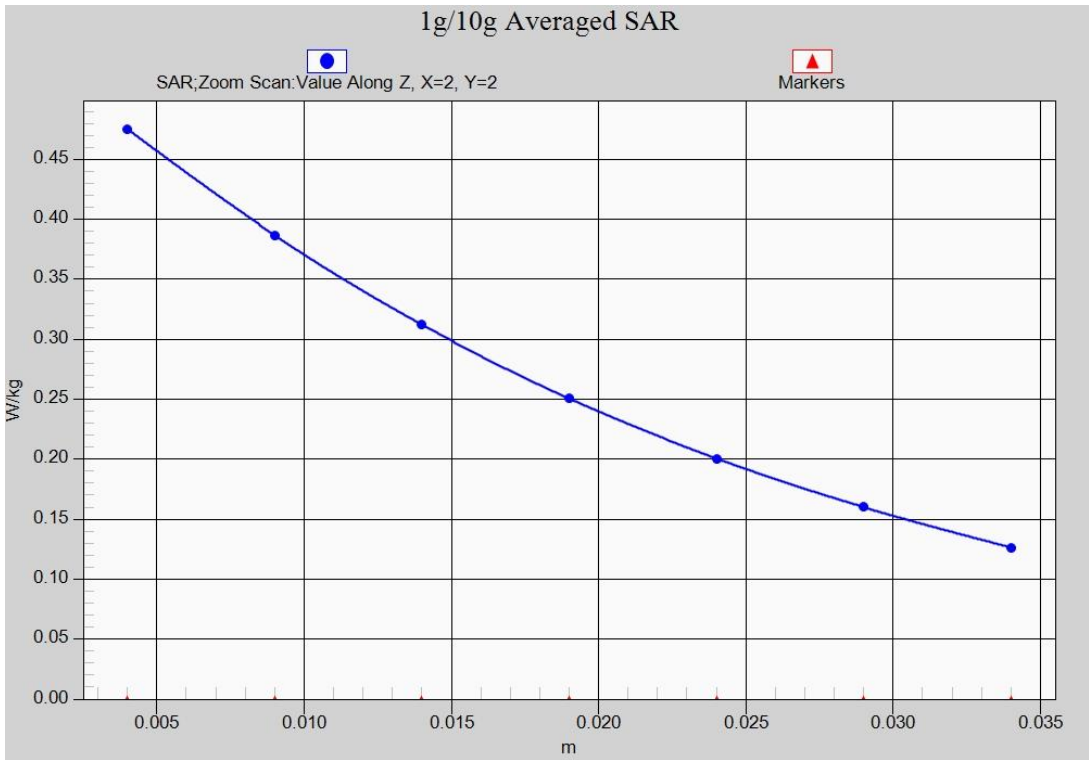


Fig.21-1 Z-Scan at power reference point (Band 17 CH23800)

LTE Band 17 Body Rear High with QPSK_10MHz_1RB_Middle

Date/Time: 2017-2-22

Electronics: DAE4 Sn786

Medium: Body 750 MHz

Medium parameters used: $f = 711 \text{ MHz}$; $\sigma = 0.902 \text{ S/m}$; $\epsilon_r = 54.36$; $\rho = 1000 \text{ kg/m}^3$

Ambient Temperature: 22.7°C Liquid Temperature: 22.2°C

Communication System: UID 0, 4G_LTE_FDD (0) Frequency: 711 MHz Duty Cycle: 1:1

Probe: ES3DV3 - SN3151 ConvF (6.12, 6.12, 6.12);

Rear side High 1BR_Mid/Area Scan (111x61x1): Interpolated grid: $dx=1.500 \text{ mm}$, $dy=1.500 \text{ mm}$

Maximum value of SAR (interpolated) = 0.429 W/kg

Rear side High 1BR_Mid/Zoom Scan (5x5x7)/Cube 0: Measurement grid: $dx=8\text{mm}$, $dy=8\text{mm}$, $dz=5\text{mm}$

Reference Value = 22.25 V/m; Power Drift = -0.05 dB

Peak SAR (extrapolated) = 0.494 W/kg

SAR(1 g) = 0.412 W/kg; SAR(10 g) = 0.326 W/kg

Maximum value of SAR (measured) = 0.428 W/kg

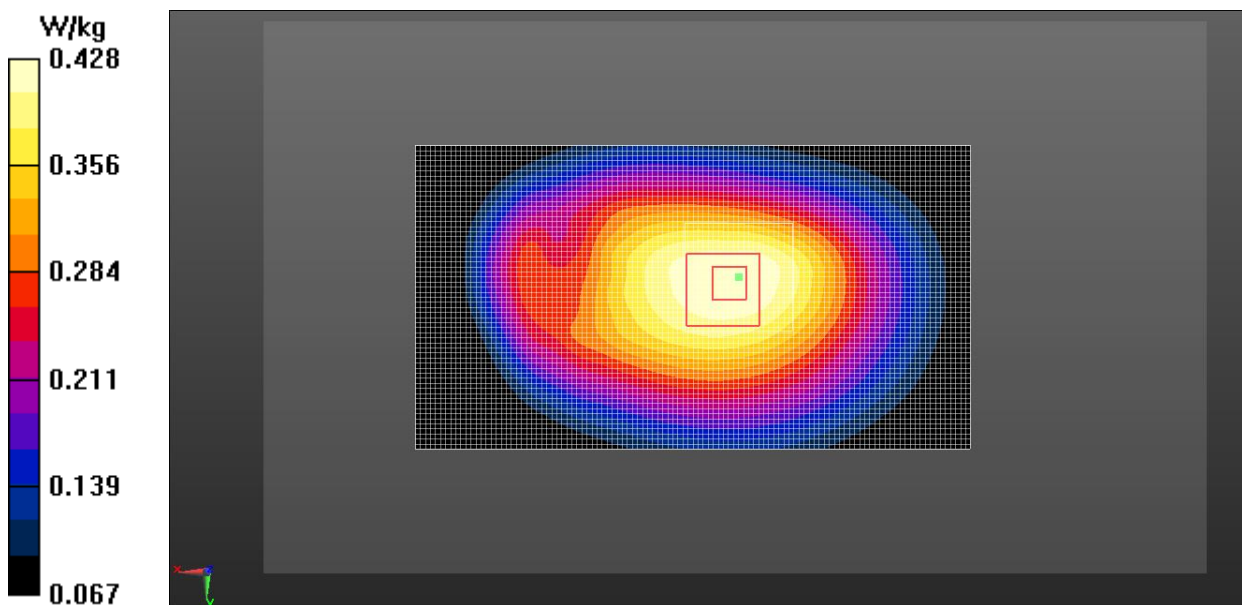


Fig.22 LTE Band 17 CH23800

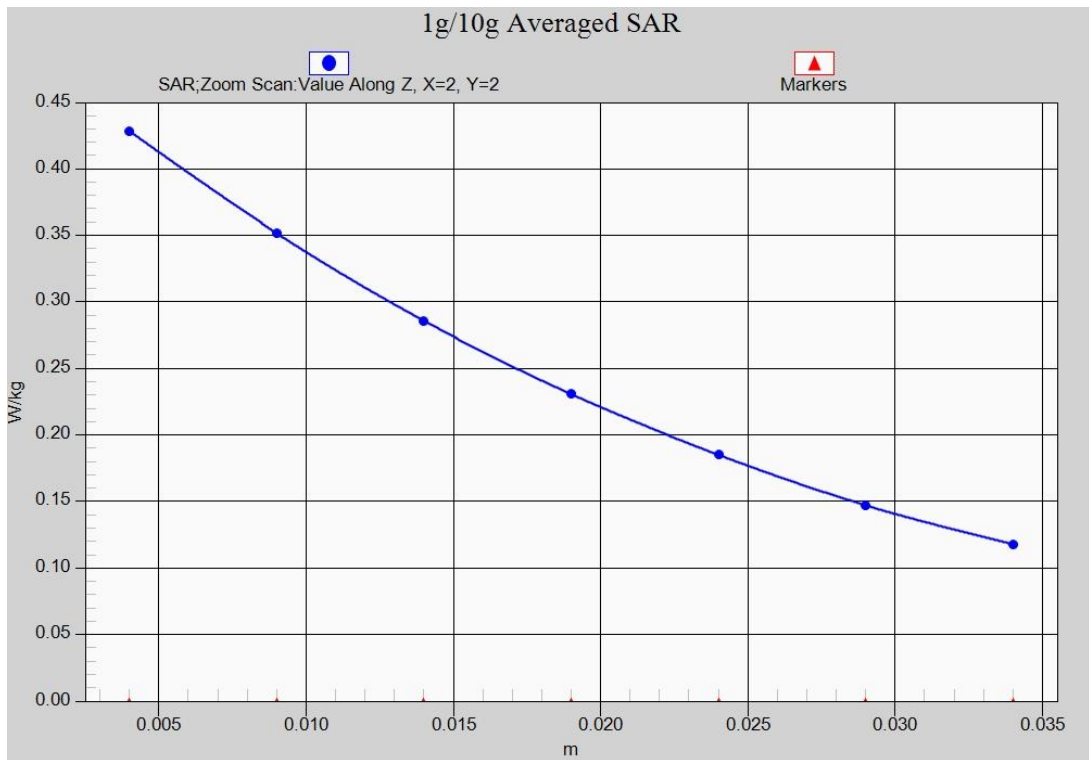


Fig.22-1 Z-Scan at power reference point (Band 17 CH23800)

LTE Band 25 Right Cheek Middle with QPSK_20MHz_1RB_Low

Date/Time: 2017-2-12

Electronics: DAE4 Sn786

Medium: Head 1900 MHz

Medium parameters used (interpolated): $f = 1882.5$ MHz; $\sigma = 1.402$ S/m; $\epsilon_r = 40.741$; $\rho = 1000$ kg/m³

Ambient Temperature: 21.5°C Liquid Temperature: 21.0°C

Communication System: UID 0, 4G_LTE_FDD (0) Frequency: 1882.5 MHz Duty Cycle: 1:1

Probe: ES3DV3 - SN3151 ConvF (4.88, 4.88, 4.88);

Right cheek Mid 1RB Low /Area Scan (71x111x1): Measurement grid: dx=15mm, dy=15mm

Maximum value of SAR (interpolated) = 0.333 W/kg

Right cheek Mid 1RB Low /Zoom Scan (5x5x7)/Cube 0: Measurement grid: dx=8mm, dy=8mm, dz=5mm

Reference Value = 5.17 V/m; Power Drift = 0.02 dB

Peak SAR (extrapolated) = 0.448 W/kg

SAR(1 g) = 0.306 W/kg; SAR(10 g) = 0.182 W/kg

Maximum value of SAR (measured) = 0.323 W/kg

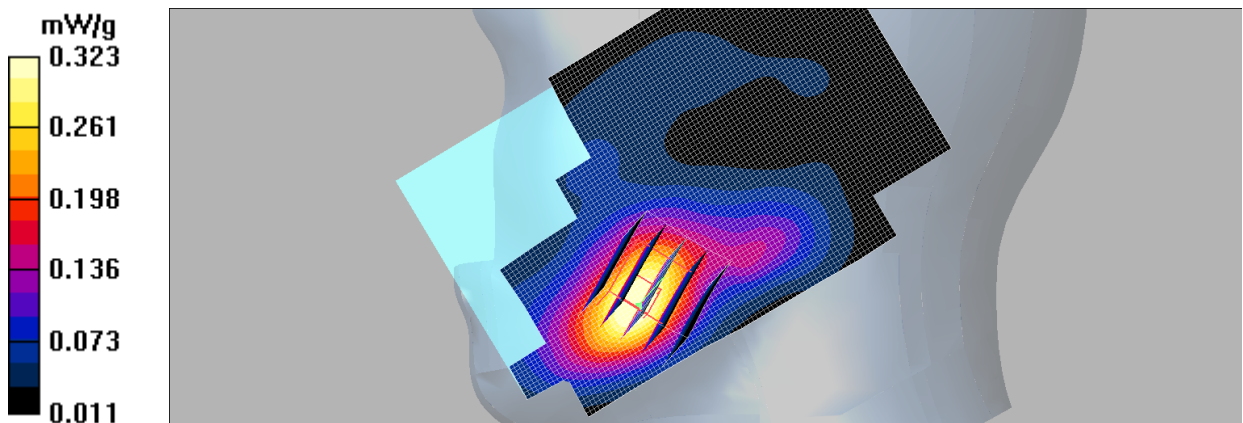


Fig.23 LTE Band 25 CH26365

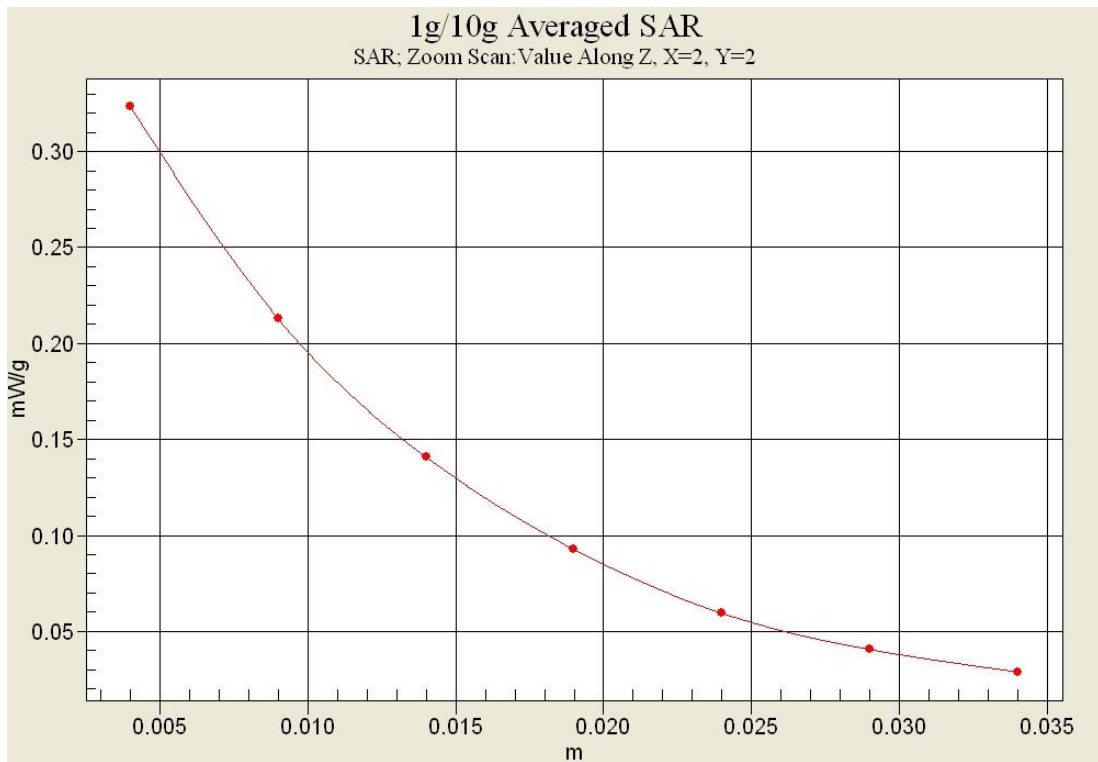


Fig.23-1 Z-Scan at power reference point (Band 25 CH26365)

LTE Band 25 Body Rear Middle with QPSK_20MHz_1RB_Low

Date/Time: 2017-2-12

Electronics: DAE4 Sn786

Medium: Body 1900 MHz

Medium parameters used (interpolated): $f = 1882.5$ MHz; $\sigma = 1.533$ S/m; $\epsilon_r = 52.964$; $\rho = 1000$ kg/m³

Ambient Temperature: 21.8°C Liquid Temperature: 21.3°C

Communication System: UID 0, 4G_LTE_FDD (0) Frequency: 1882.5 MHz Duty Cycle: 1:1

Probe: ES3DV3 - SN3151 ConvF (4.49, 4.49, 4.49);

Rear side Mid 1RB_Low/Area Scan (61x121x1): Measurement grid: dx=15mm, dy=15mm

Maximum value of SAR (interpolated) = 0.716 W/kg

Rear side Mid 1RB_Low/Zoom Scan (5x5x7)/Cube 0: Measurement grid: dx=8mm, dy=8mm, dz=5mm

Reference Value = 9.76 V/m; Power Drift = -0.02 dB

Peak SAR (extrapolated) = 1.04 W/kg

SAR(1 g) = 0.644 W/kg; SAR(10 g) = 0.358 W/kg

Maximum value of SAR (measured) = 0.722 W/kg

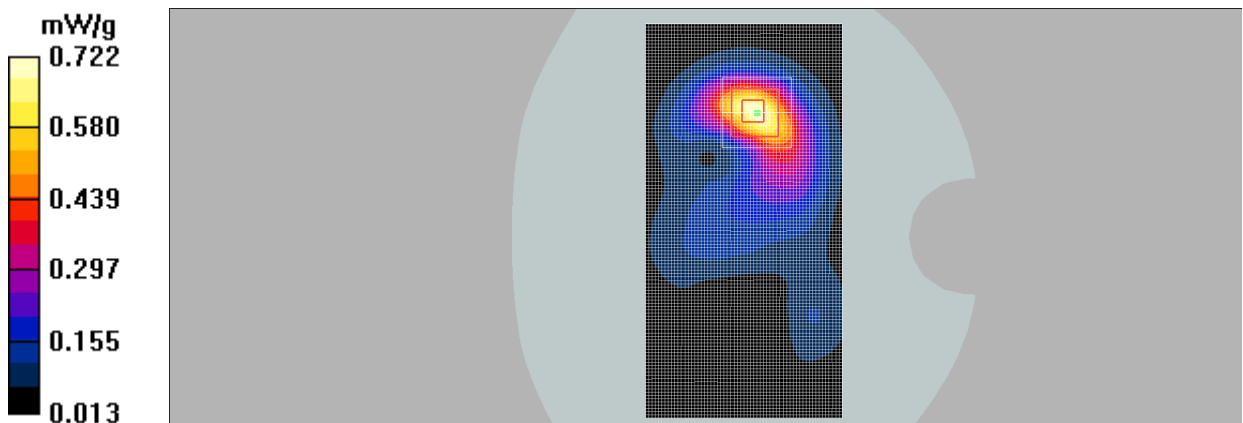


Fig.24 LTE Band 25 CH26365

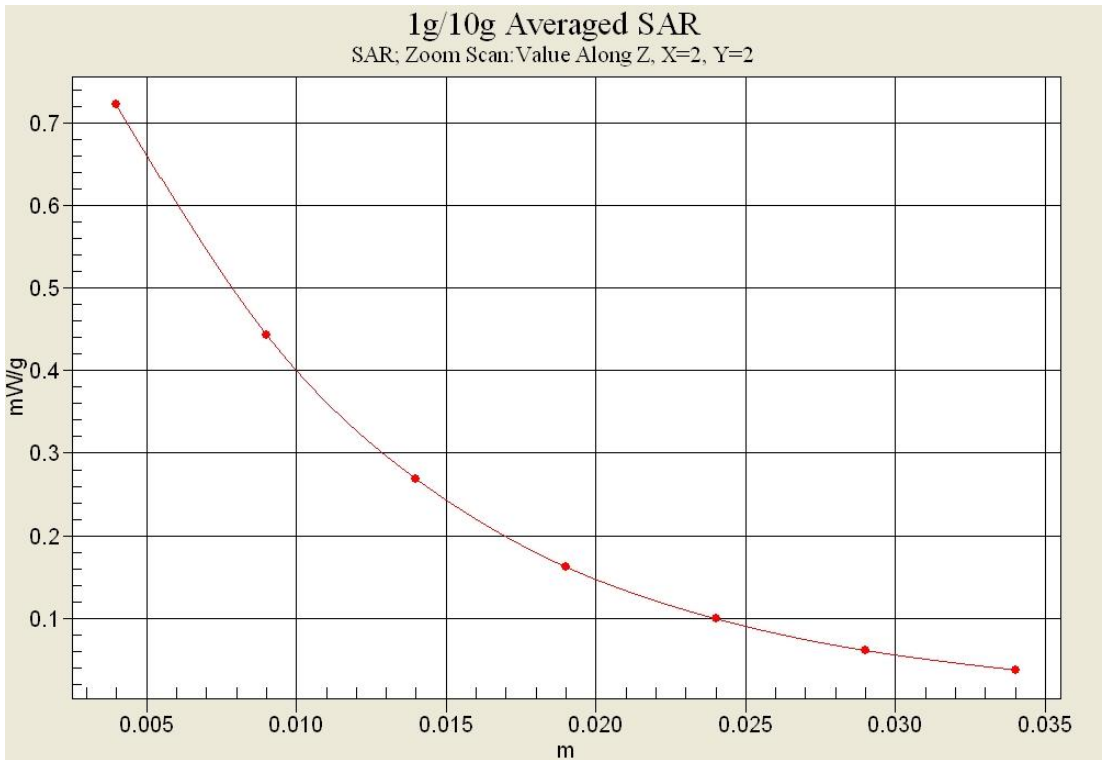


Fig.24-1 Z-Scan at power reference point (Band 25 CH26365)

LTE Band 26 Left Cheek Low with QPSK_15MHz_1RB_High

Date/Time: 2017-2-18

Electronics: DAE4 Sn786

Medium: Head 835 MHz

Medium parameters used: $f = 822.5$ MHz; $\sigma = 0.874$ S/m; $\epsilon_r = 40.966$; $\rho = 1000$ kg/m³

Ambient Temperature: 22.0°C Liquid Temperature: 21.5°C

Communication System: UID 0, 4G_LTE_FDD (0) Frequency: 822.5 MHz Duty Cycle: 1:1

Probe: ES3DV3 - SN3151 ConvF (6.08, 6.08, 6.08);

Left cheek Low 1RB High/Area Scan (61x111x1): Measurement grid: dx=15mm, dy=15mm

Maximum value of SAR (interpolated) = 0.267 W/kg

Left cheek Low 1RB High/Zoom Scan (5x5x7)/Cube 0: Measurement grid: dx=8mm, dy=8mm, dz=5mm

Reference Value = 5.60 V/m; Power Drift = 0.03 dB

Peak SAR (extrapolated) = 0.327 W/kg

SAR(1 g) = 0.254 W/kg; SAR(10 g) = 0.185 W/kg

Maximum value of SAR (measured) = 0.269 W/kg

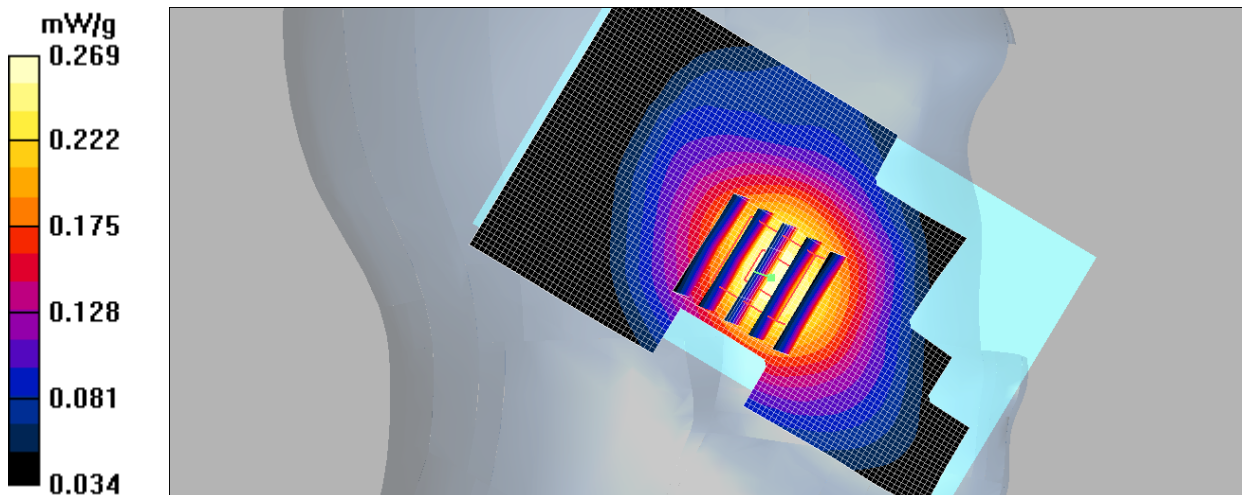


Fig.25 LTE Band 26 CH26775

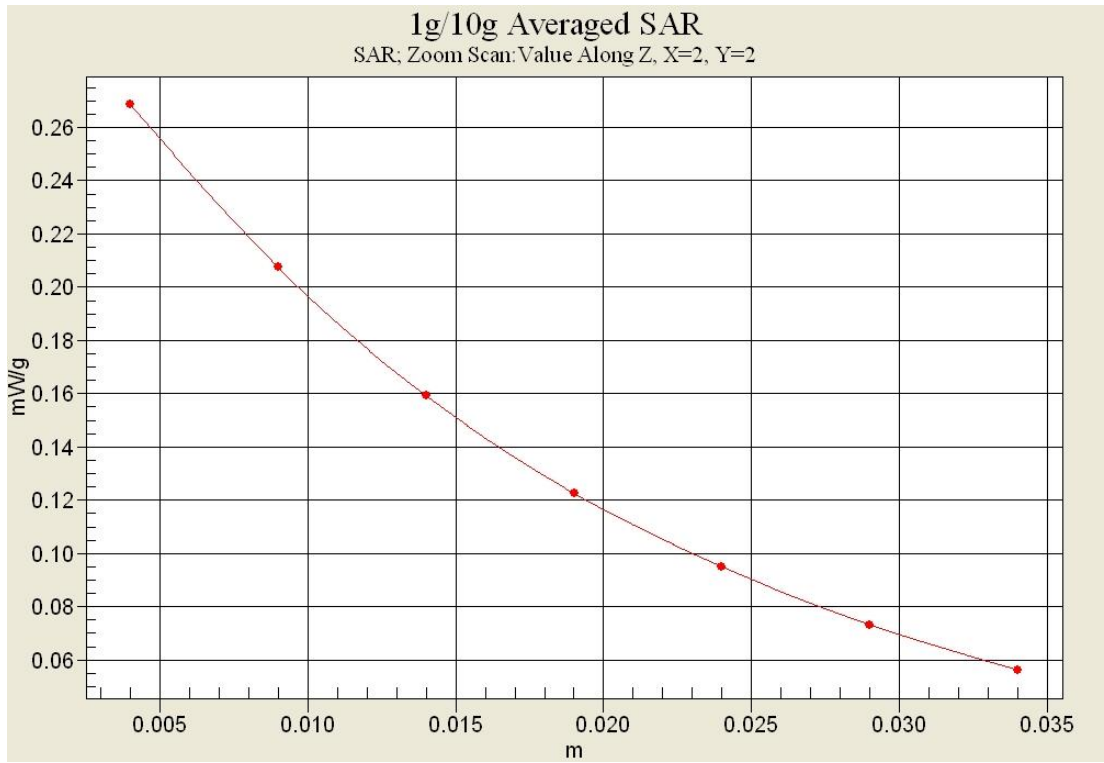


Fig.25-1 Z-Scan at power reference point (Band 26 CH26775)

LTE Band 26 Body Front Low with QPSK_15MHz_1RB_High

Date/Time: 2017-2-18

Electronics: DAE4 Sn786

Medium: Body 835 MHz

Medium parameters used (interpolated): $f = 822.5$ MHz; $\sigma = 0.965$ S/m; $\epsilon_r = 55.796$; $\rho = 1000$ kg/m³

Ambient Temperature: 22.6°C Liquid Temperature: 22.1°C

Communication System: UID 0, 4G_LTE_FDD (0) Frequency: 822.5 MHz Duty Cycle: 1:1

Probe: ES3DV3 - SN3151 ConvF (6.13, 6.13, 6.13);

Front side Low 1RB High/Area Scan (61x121x1): Measurement grid: dx=15mm, dy=15mm

Maximum value of SAR (interpolated) = 0.195 W/kg

Front side Low 1RB High/Zoom Scan (5x5x7)/Cube 0: Measurement grid: dx=8mm, dy=8mm, dz=5mm

Reference Value = 13.9 V/m; Power Drift = 0.03 dB

Peak SAR (extrapolated) = 0.207 W/kg

SAR(1 g) = 0.185 W/kg; SAR(10 g) = 0.133 W/kg

Maximum value of SAR (measured) = 0.234 W/kg

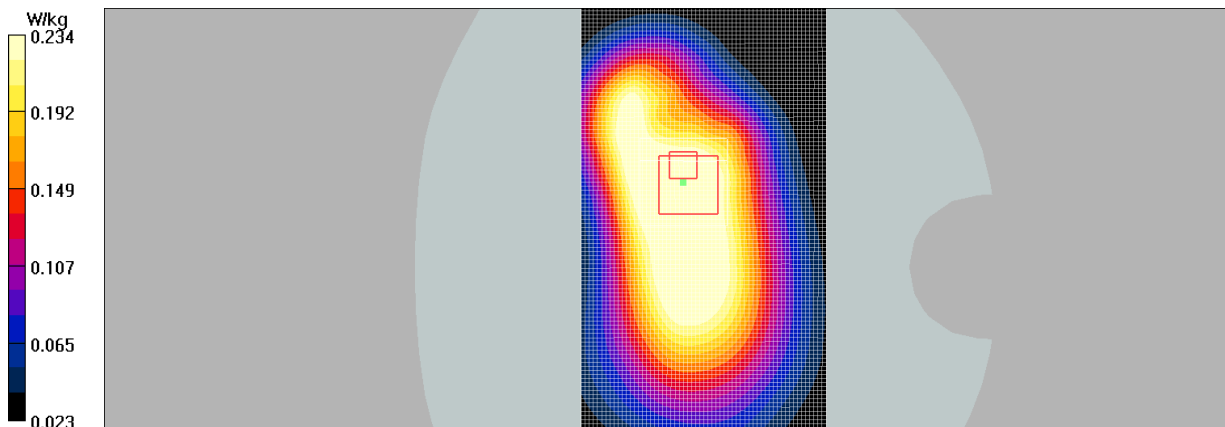


Fig.26 LTE Band 26 CH26775

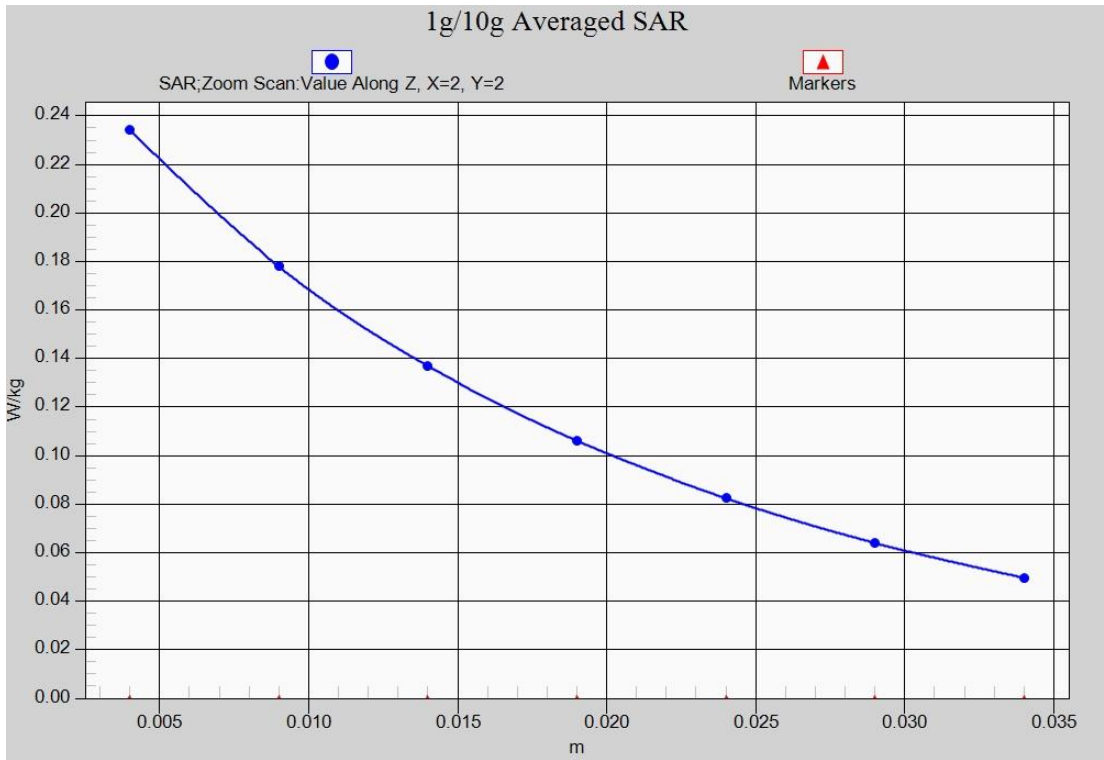


Fig.26-1 Z-Scan at power reference point (Band 26 CH26775)

LTE Band 38 Right Cheek Middle with QPSK_20MHz_1RB_High

Date/Time: 2017-3-15

Electronics: DAE4 Sn786

Medium: Head 2550 MHz

Medium parameters used (interpolated): $f = 2595$ MHz; $\sigma = 1.987$ S/m; $\epsilon_r = 38.476$; $\rho = 1000$ kg/m³

Ambient Temperature: 22.3°C Liquid Temperature: 21.8°C

Communication System: UID 0, 4G_LTE_FDD (0) Frequency: 2595 MHz Duty Cycle: 1:1.58

Probe: ES3DV3 – SN3151 ConvF (4.43, 4.43, 4.43);

Right cheek Mid 1RB High/Area Scan (61x111x1): Measurement grid: dx=15mm, dy=15mm

Maximum value of SAR (interpolated) = 0.213 W/kg

Right cheek Mid 1RB High/Zoom Scan (5x5x7)/Cube 0: Measurement grid: dx=8mm, dy=8mm, dz=5mm

Reference Value = 2.56 V/m; Power Drift = 0.07 dB

Peak SAR (extrapolated) = 0.345 W/kg

SAR(1 g) = 0.182 W/kg; SAR(10 g) = 0.089 W/kg

Maximum value of SAR (measured) = 0.245 W/kg

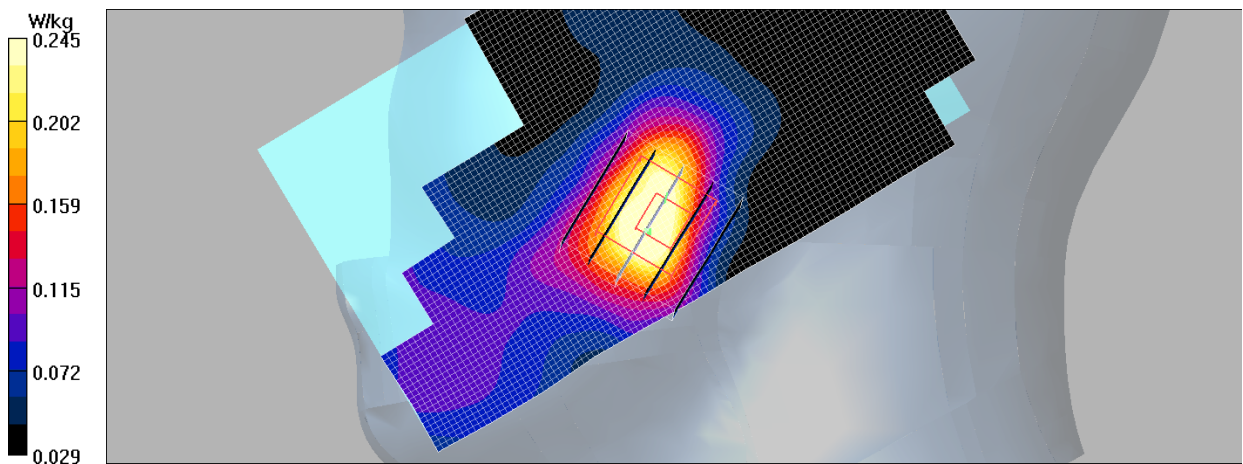


Fig.27 LTE Band 26 CH38000

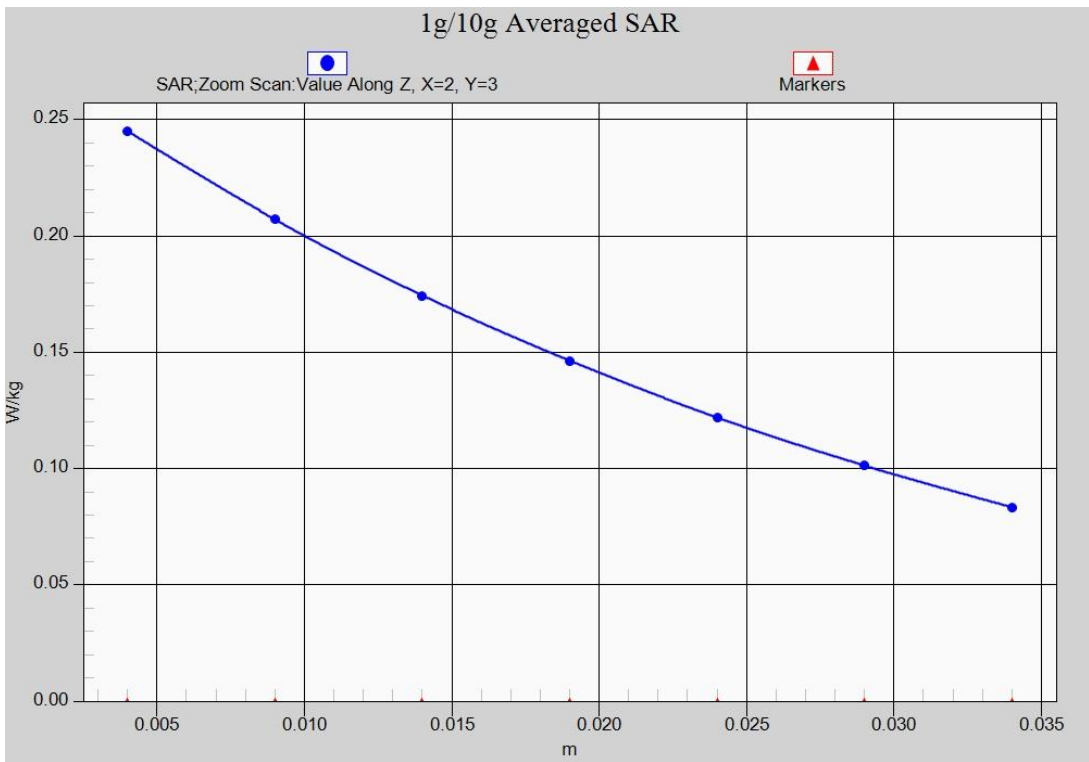


Fig.27-1 Z-Scan at power reference point (Band 38 CH38000)

LTE Band 38 Body Bottom Middle with QPSK_20MHz_1RB_High

Date/Time: 2017-3-15

Electronics: DAE4 Sn786

Medium: Body 2550 MHz

Medium parameters used (interpolated): $f = 2595$ MHz; $\sigma = 2.105$ S/m; $\epsilon_r = 51.494$; $\rho = 1000$ kg/m³

Ambient Temperature: 22.7°C Liquid Temperature: 22.2°C

Communication System: UID 0, 4G_LTE_FDD (0) Frequency: 2595 MHz Duty Cycle: 1:1.58

Probe: ES3DV3 - SN3151 ConvF (4.09, 4.09, 4.09);

Bottom side Middle 1RB_High/Area Scan (41x71x1): Measurement grid: dx=15mm, dy=15mm

Maximum value of SAR (interpolated) = 1.54 W/kg

Bottom side Middle 1RB_High/Zoom Scan (5x5x7)/Cube 0: Measurement grid: dx=8mm, dy=8mm, dz=5mm

Reference Value = 21.1 V/m; Power Drift = 0.10 dB

Peak SAR (extrapolated) = 2.42 W/kg

SAR(1 g) = 1.22 W/kg; SAR(10 g) = 0.659 W/kg

Maximum value of SAR (measured) = 1.45 W/kg

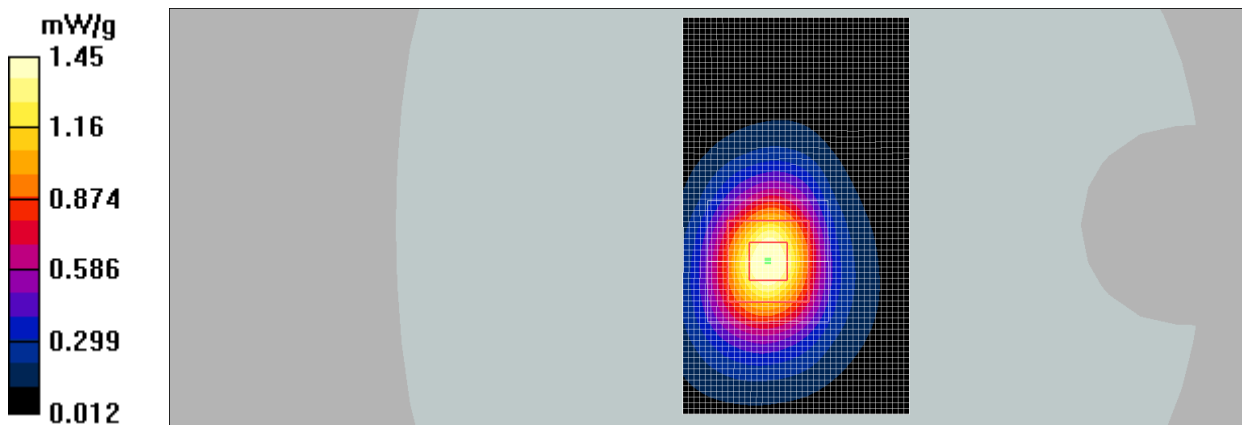


Fig.28 LTE Band 26 CH38000

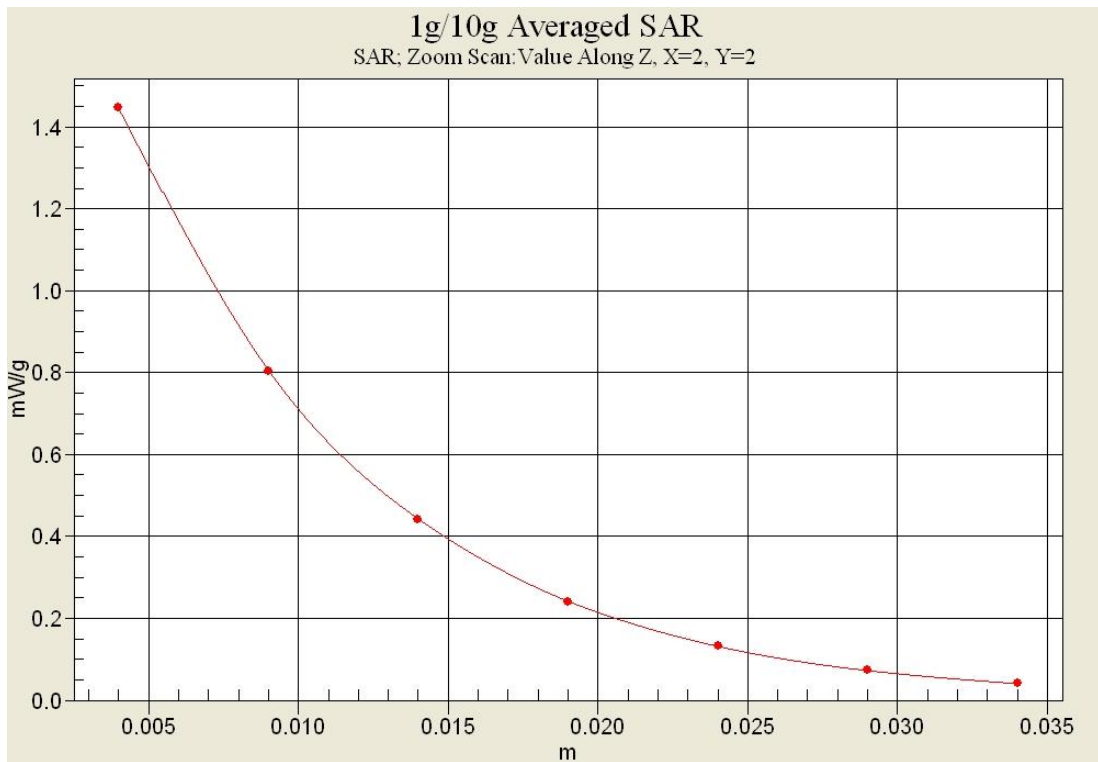


Fig.28-1 Z-Scan at power reference point (Band 38 CH38000)

Wi-Fi 802.11b Right Cheek Channel 6

Date/Time: 2017-2-15

Electronics: DAE4 Sn786

Medium: Head 2450 MHz

Medium parameters used: $f = 2437$ MHz; $\sigma = 1.838$ S/m; $\epsilon_r = 37.926$; $\rho = 1000$ kg/m³

Ambient Temperature: 22.2°C Liquid Temperature: 21.7°C

Communication System: UID 0, WiFi (0) Frequency: 2437 MHz Duty Cycle: 1:1

Probe: ES3DV3 - SN3151 ConvF (4.44, 4.44, 4.44);

Left cheek Mid/Area Scan (61x111x1): Measurement grid: dx=15mm, dy=15mm

Maximum value of SAR (interpolated) = 0.397 W/kg

Left cheek Mid/Zoom Scan (5x5x7)/Cube 0: Measurement grid: dx=8mm, dy=8mm, dz=5mm

Reference Value = 11.0 V/m; Power Drift = 0.03 dB

Peak SAR (extrapolated) = 0.671 W/kg

SAR(1 g) = 0.346 W/kg; SAR(10 g) = 0.172 W/kg

Maximum value of SAR (measured) = 0.354 W/kg

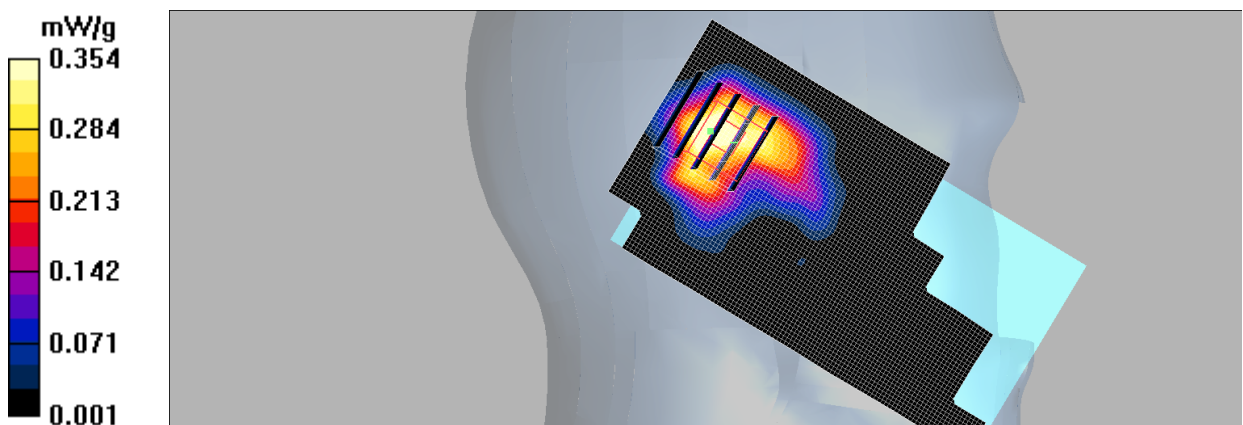


Fig.29 Wi-Fi 2450 MHz CH6

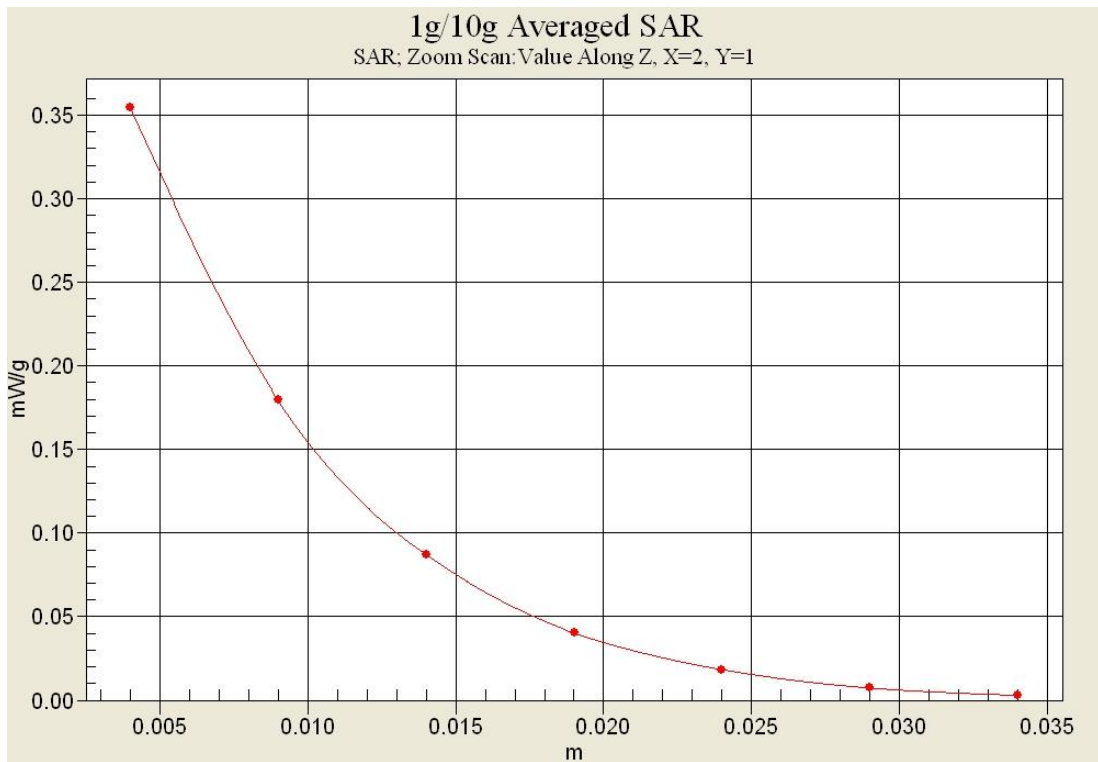


Fig.29-1 Z-Scan at power reference point (Wi-Fi 2450 MHz CH6)

Wi-Fi 802.11b Body Top Channel 6

Date/Time: 2017-2-15

Electronics: DAE4 Sn786

Medium: Body 2450 MHz

Medium parameters used: $f = 2437$ MHz; $\sigma = 1.901$ S/m; $\epsilon_r = 54.692$; $\rho = 1000$ kg/m³

Ambient Temperature: 22.3°C Liquid Temperature: 21.8°C

Communication System: UID 0, WiFi (0) Frequency: 2437 MHz Duty Cycle: 1:1

Probe: ES3DV3 - SN3151 ConvF (4.23, 4.23, 4.23);

Top side Mid/Area Scan (41x71x1): Measurement grid: dx=15mm, dy=15mm

Maximum value of SAR (interpolated) = 0.148 W/kg

Top side Mid/Zoom Scan (5x5x7)/Cube 0: Measurement grid: dx=8mm, dy=8mm, dz=5mm

Reference Value = 8.81 V/m; Power Drift = -0.003 dB

Peak SAR (extrapolated) = 0.230 W/kg

SAR(1 g) = 0.130 W/kg; SAR(10 g) = 0.065 W/kg

Maximum value of SAR (measured) = 0.142 W/kg

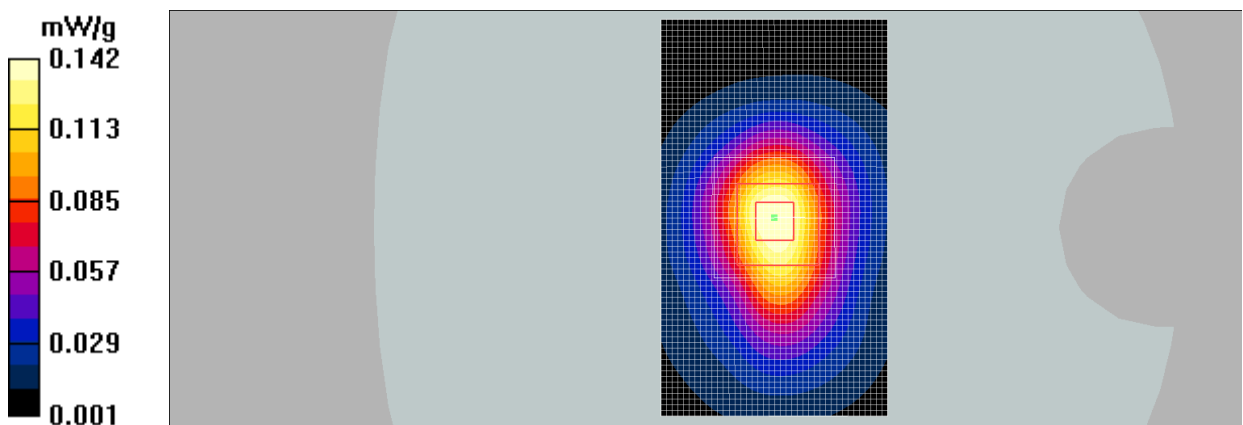


Fig.30 Wi-Fi 2450 MHz CH6

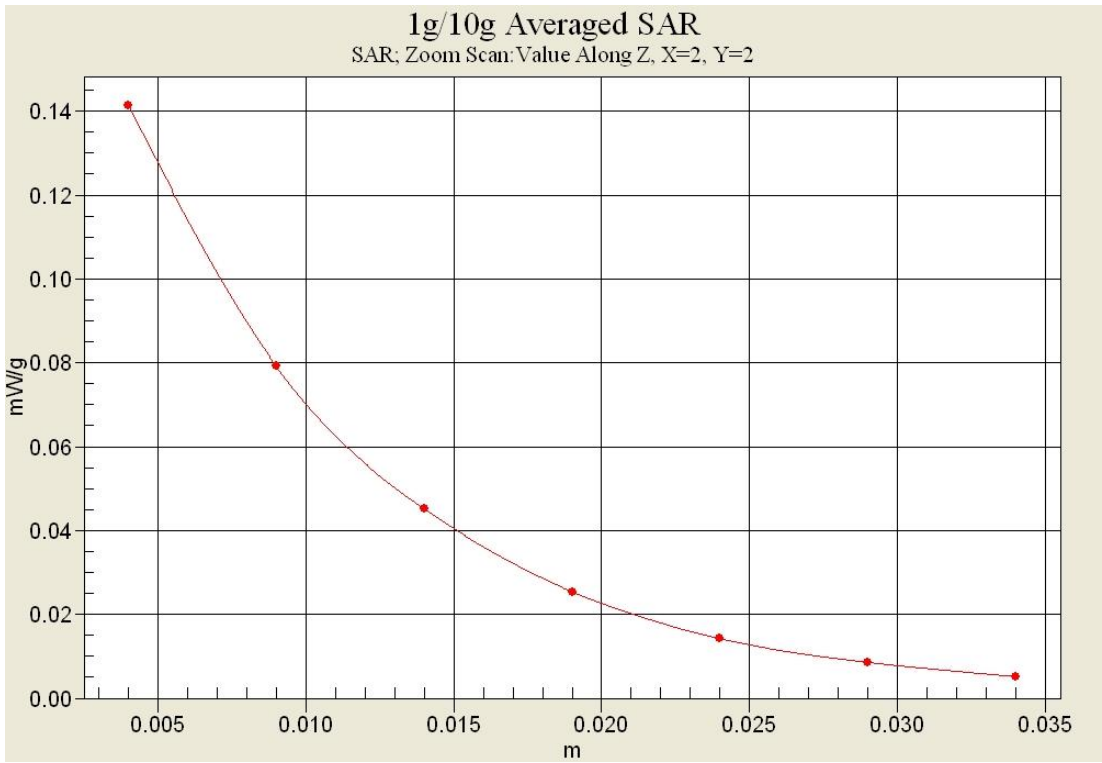


Fig.30-1 Z-Scan at power reference point (Wi-Fi 2450 MHz CH6)

ANNEX B System Verification Results

750MHz

Date: 2017-2-22

Electronics: DAE4 Sn786

Medium: Head 750 MHz

Medium parameters used: $f = 750$ MHz; $\sigma = 0.914$ S/m; $\epsilon_r = 41.142$; $\rho = 1000$ kg/m³

Ambient Temperature: 22.5°C Liquid Temperature: 22.0°C

Communication System: CW Frequency: 750 MHz Duty Cycle: 1:1

Probe: ES3DV3 - SN3151 ConvF (6.34, 6.34, 6.34)

System Validation /Area Scan (81x191x1): Interpolated grid: dx=1.000 mm, dy=1.000 mm

Reference Value = 55.886 V/m; Power Drift = -0.07 dB

Fast SAR: SAR(1 g) = 2.20 W/kg; SAR(10 g) = 1.44 W/kg

Maximum value of SAR (interpolated) = 2.39 W/kg

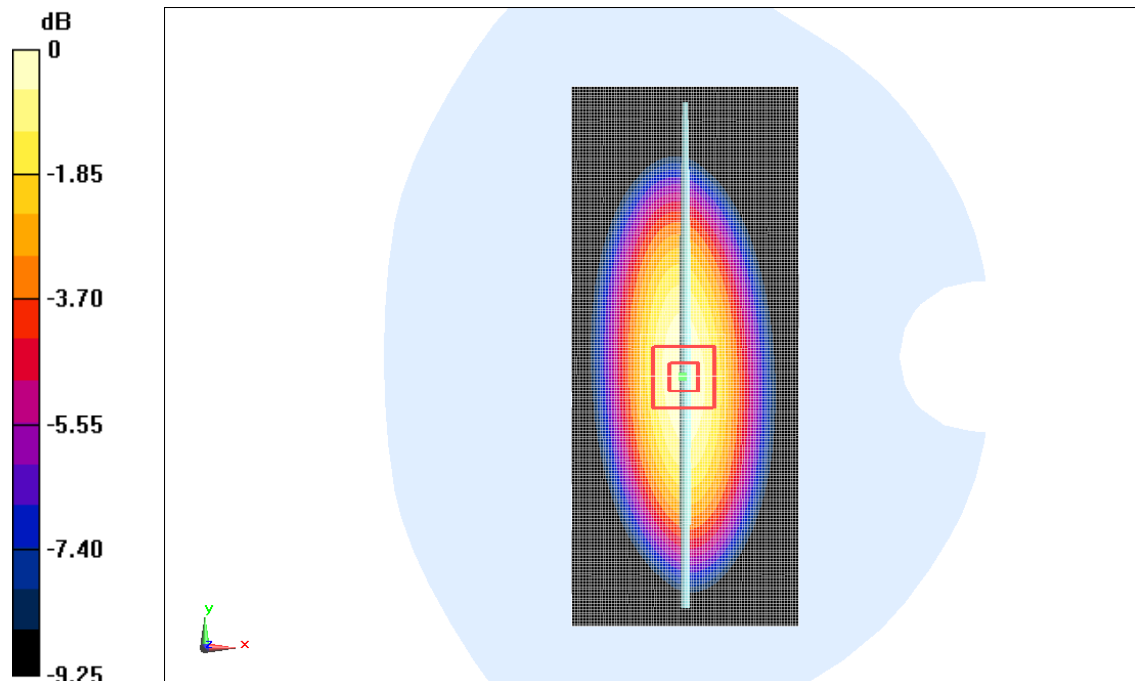
System Validation /Zoom Scan (7x7x7)/Cube 0: Measurement grid: dx=5mm, dy=5mm, dz=5mm

Reference Value = 55.886 V/m; Power Drift = -0.07 dB

Peak SAR (extrapolated) = 2.96 W/kg

SAR(1 g) = 2.16 W/kg; SAR(10 g) = 1.40W/kg

Maximum value of SAR (measured) = 2.33 W/kg



0 dB = 2.33 W/kg = 3.67 dB W/kg

Fig.B.1 validation 750MHz 250mW

750MHz

Date: 2017-2-22

Electronics: DAE4 Sn786

Medium: Body 750 MHz

Medium parameters used: $f = 750 \text{ MHz}$; $\sigma = 0.942 \text{ S/m}$; $\epsilon_r = 53.922$; $\rho = 1000 \text{ kg/m}^3$

Ambient Temperature: 22.5°C Liquid Temperature: 22.0°C

Communication System: CW Frequency: 750 MHz Duty Cycle: 1:1

Probe: ES3DV3 - SN3151 ConvF (6.12, 6.12, 6.12)

System Validation /Area Scan (81x191x1): Interpolated grid: $dx=1.000 \text{ mm}$, $dy=1.000 \text{ mm}$

Reference Value = 57.622 V/m; Power Drift = -0.06 dB

Fast SAR: SAR(1 g) = 2.17 W/kg; SAR(10 g) = 1.45 W/kg

Maximum value of SAR (interpolated) = 2.38 W/kg

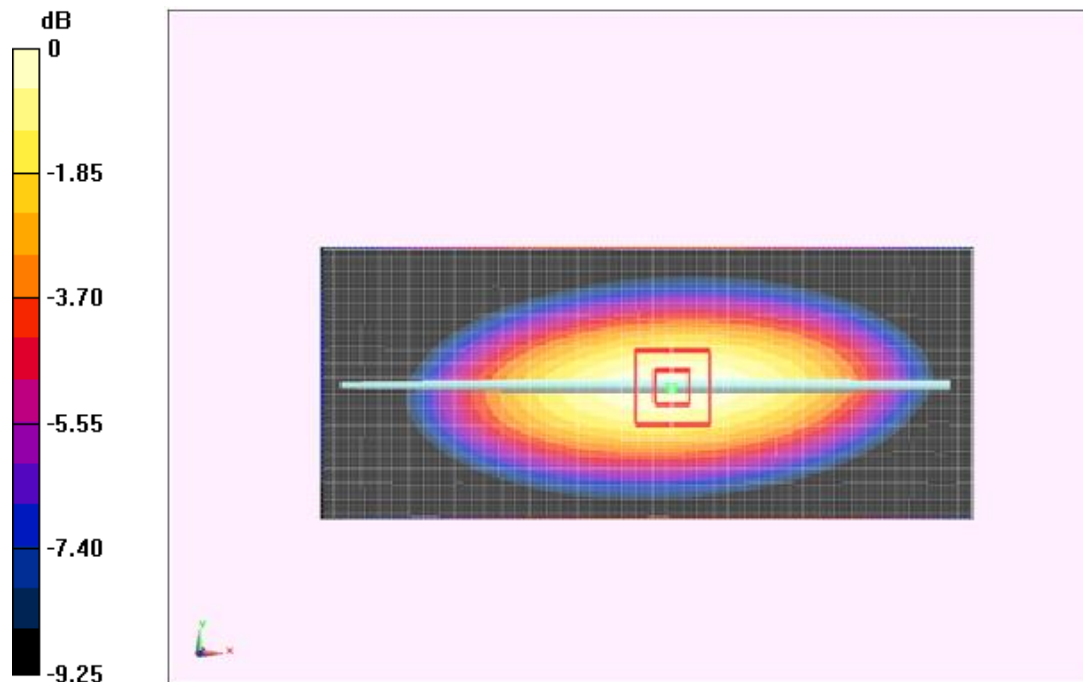
System Validation /Zoom Scan (7x7x7)/Cube 0: Measurement grid: $dx=5\text{mm}$, $dy=5\text{mm}$, $dz=5\text{mm}$

Reference Value = 57.622 V/m; Power Drift = -0.06 dB

Peak SAR (extrapolated) = 2.55 W/kg

SAR(1 g) = 2.14 W/kg; SAR(10 g) = 1.42 W/kg

Maximum value of SAR (measured) = 2.34 W/kg



0 dB = 2.34 W/kg = 3.69 dB W/kg

Fig.B.2 validation 750MHz 250mW

835MHz

Date: 2017-2-18

Electronics: DAE4 Sn786

Medium: Head 835 MHz

Medium parameters used: $f = 835 \text{ MHz}$; $\sigma = 0.885 \text{ S/m}$; $\epsilon_r = 40.825$; $\rho = 1000 \text{ kg/m}^3$

Ambient Temperature: 22.7°C Liquid Temperature: 22.2°C

Communication System: CW Frequency: 835 MHz Duty Cycle: 1:1

Probe: ES3DV3 - SN3151 ConvF (6.08, 6.08, 6.08)

System Validation /Area Scan (81x161x1): Interpolated grid: $dx=1.000 \text{ mm}$, $dy=1.000 \text{ mm}$

Reference Value = 57.246 V/m ; Power Drift = 0.09 dB

Fast SAR: SAR(1 g) = 2.28 W/kg ; SAR(10 g) = 1.51 W/kg

Maximum value of SAR (interpolated) = 2.48 W/kg

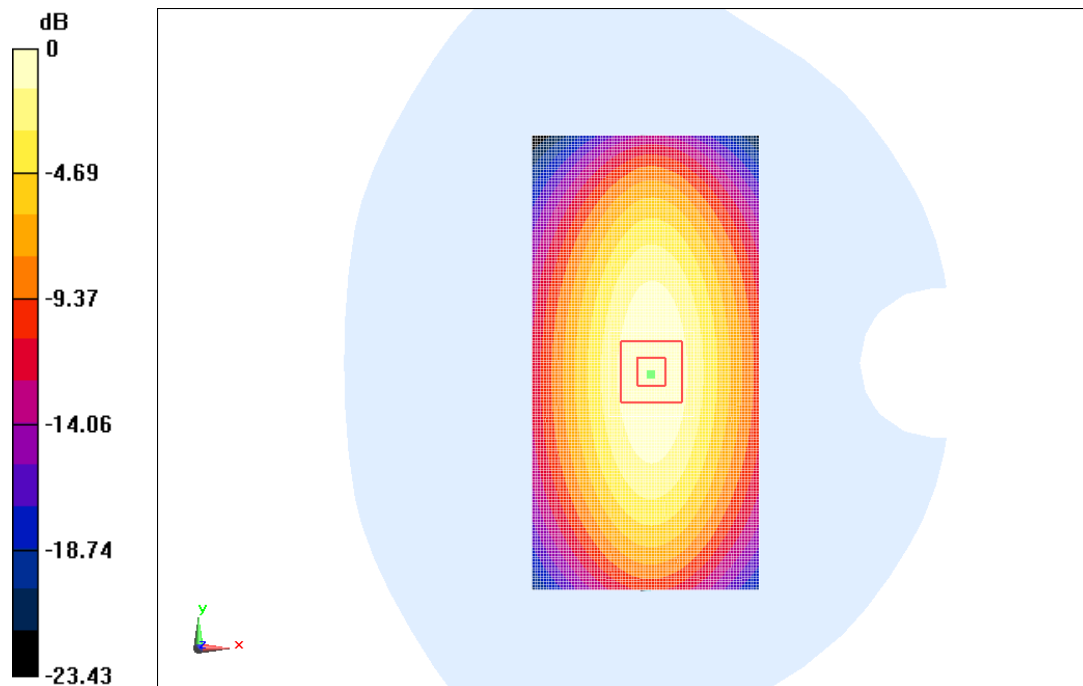
System Validation /Zoom Scan (7x7x7)/Cube 0: Measurement grid: $dx=5\text{mm}$, $dy=5\text{mm}$, $dz=5\text{mm}$

Reference Value = 57.246 V/m ; Power Drift = 0.09 dB

Peak SAR (extrapolated) = 3.52 W/kg

SAR(1 g) = 2.25 W/kg ; SAR(10 g) = 1.48 W/kg

Maximum value of SAR (measured) = 2.38 W/kg



0 dB = $2.38 \text{ W/kg} = 3.77 \text{ dBW/kg}$

Fig.B.3 validation 835MHz 250mW

835MHz

Date: 2017-2-18

Electronics: DAE4 Sn786

Medium: Body 835 MHz

Medium parameters used: $f = 835 \text{ MHz}$; $\sigma = 0.975 \text{ S/m}$; $\epsilon_r = 55.676$; $\rho = 1000 \text{ kg/m}^3$

Ambient Temperature: 22.5°C Liquid Temperature: 22.1°C

Communication System: CW Frequency: 835 MHz Duty Cycle: 1:1

Probe: ES3DV3 - SN3151 ConvF (6.13, 6.13, 6.13)

System Validation /Area Scan (81x171x1): Interpolated grid: $dx=1.000 \text{ mm}$, $dy=1.000 \text{ mm}$

Reference Value = 52.586 V/m ; Power Drift = -0.02 dB

Fast SAR: SAR(1 g) = 2.30 W/kg ; SAR(10 g) = 1.55 W/kg

Maximum value of SAR (interpolated) = 2.59 W/kg

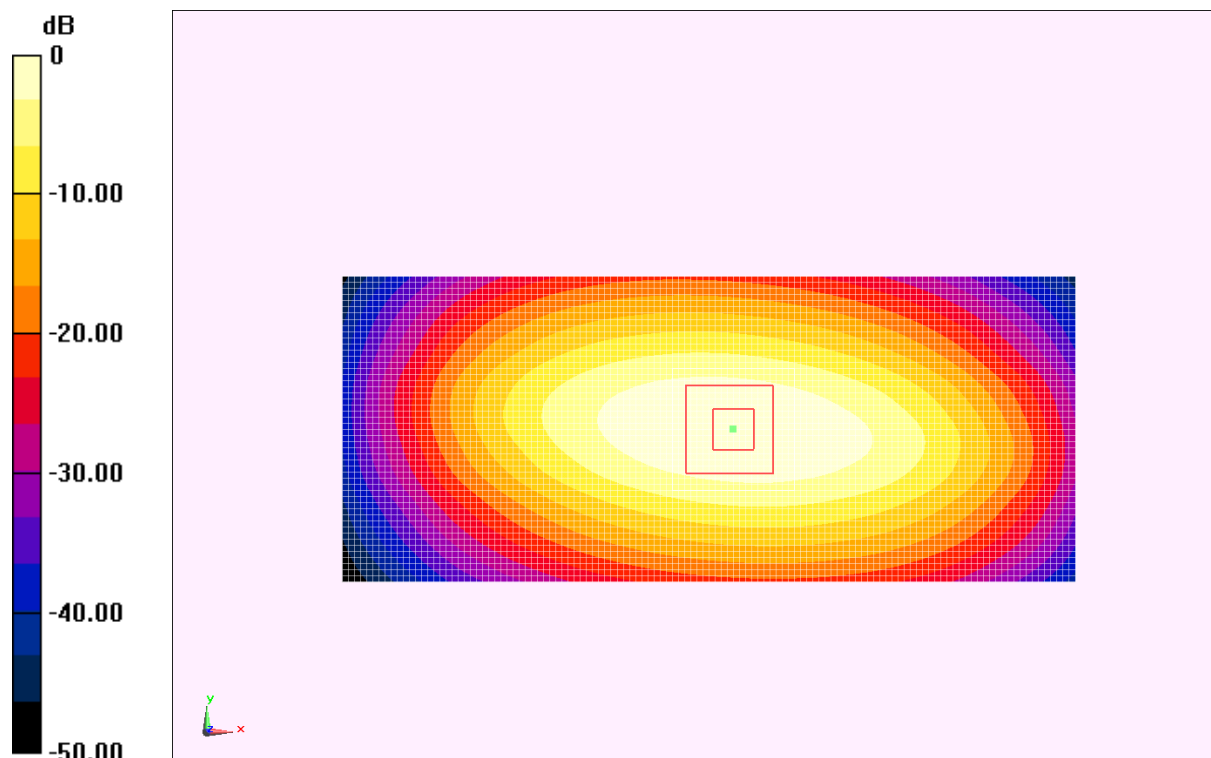
System Validation /Zoom Scan (7x7x7)/Cube 0: Measurement grid: $dx=5\text{mm}$, $dy=5\text{mm}$, $dz=5\text{mm}$

Reference Value = 52.586 V/m ; Power Drift = -0.02 dB

Peak SAR (extrapolated) = 3.47 W/kg

SAR(1 g) = 2.28 W/kg ; SAR(10 g) = 1.51 W/kg

Maximum value of SAR (measured) = 2.51 W/kg



0 dB = 2.51 W/kg = 4.00 dBW/kg

Fig.B.4 validation 835MHz 250mW

1800MHz

Date/Time: 2017-2-13

Electronics: DAE4 Sn786

Medium: Head 1800 MHz

Medium parameters used: $f = 1800 \text{ MHz}$; $\sigma = 1.384 \text{ S/m}$; $\epsilon_r = 40.994$; $\rho = 1000 \text{ kg/m}^3$

Ambient Temperature: 22.0°C Liquid Temperature: 21.5°C

Communication System: CW_TMC Frequency: 1800 MHz Duty Cycle: 1:1

Probe: ES3DV3 - SN3151 ConvF (5.10, 5.10, 5.10);

System Validation/Area Scan (61x121x1): Interpolated grid: $dx=1.000 \text{ mm}$, $dy=1.000 \text{ mm}$

Reference Value = 78.214 V/m ; Power Drift = 0.08 dB

Fast SAR: SAR(1 g) = 9.61 W/kg ; SAR(10 g) = 5.20 W/kg

Maximum value of SAR (interpolated) = 11.9 W/kg

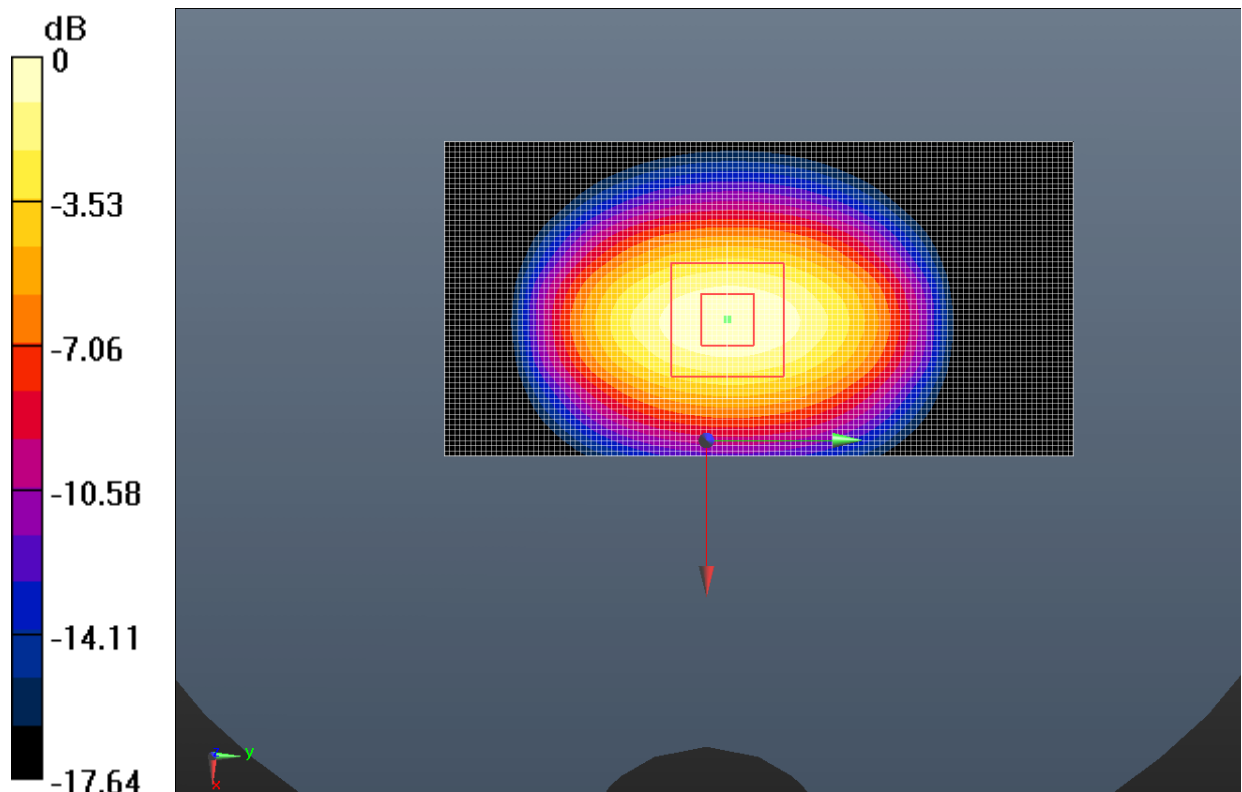
System Validation/Zoom Scan (7x7x7)/Cube 0: Measurement grid: $dx=5\text{mm}$, $dy=5\text{mm}$, $dz=5\text{mm}$

Reference Value = 78.214 V/m ; Power Drift = 0.08 dB

Peak SAR (extrapolated) = 18.2 W/kg

SAR(1 g) = 9.48 W/kg ; SAR(10 g) = 5.09 W/kg

Maximum value of SAR (measured) = 11.4 W/kg



0 dB = 11.4 W/kg = 10.57 dBW/kg

Fig.B.5 validation 1800MHz 250mW

1800MHz

Date/Time: 2017-2-13

Electronics: DAE4 Sn786

Medium: Body 1800 MHz

Medium parameters used: $f = 1800 \text{ MHz}$; $\sigma = 1.502 \text{ S/m}$; $\epsilon_r = 53.22$; $\rho = 1000 \text{ kg/m}^3$

Ambient Temperature: 22.0°C Liquid Temperature: 21.5°C

Communication System: CW_TMC Frequency: 1800 MHz Duty Cycle: 1:1

Probe: ES3DV3 - SN3151 ConvF (4.95, 4.95, 4.95);

System Validation/Area Scan (61x121x1): Interpolated grid: $dx=1.000 \text{ mm}$, $dy=1.000 \text{ mm}$

Reference Value = 77.854 V/m ; Power Drift = -0.11 dB

Fast SAR: SAR(1 g) = 9.88 W/kg; SAR(10 g) = 5.22 W/kg

Maximum value of SAR (interpolated) = 12.5 W/kg

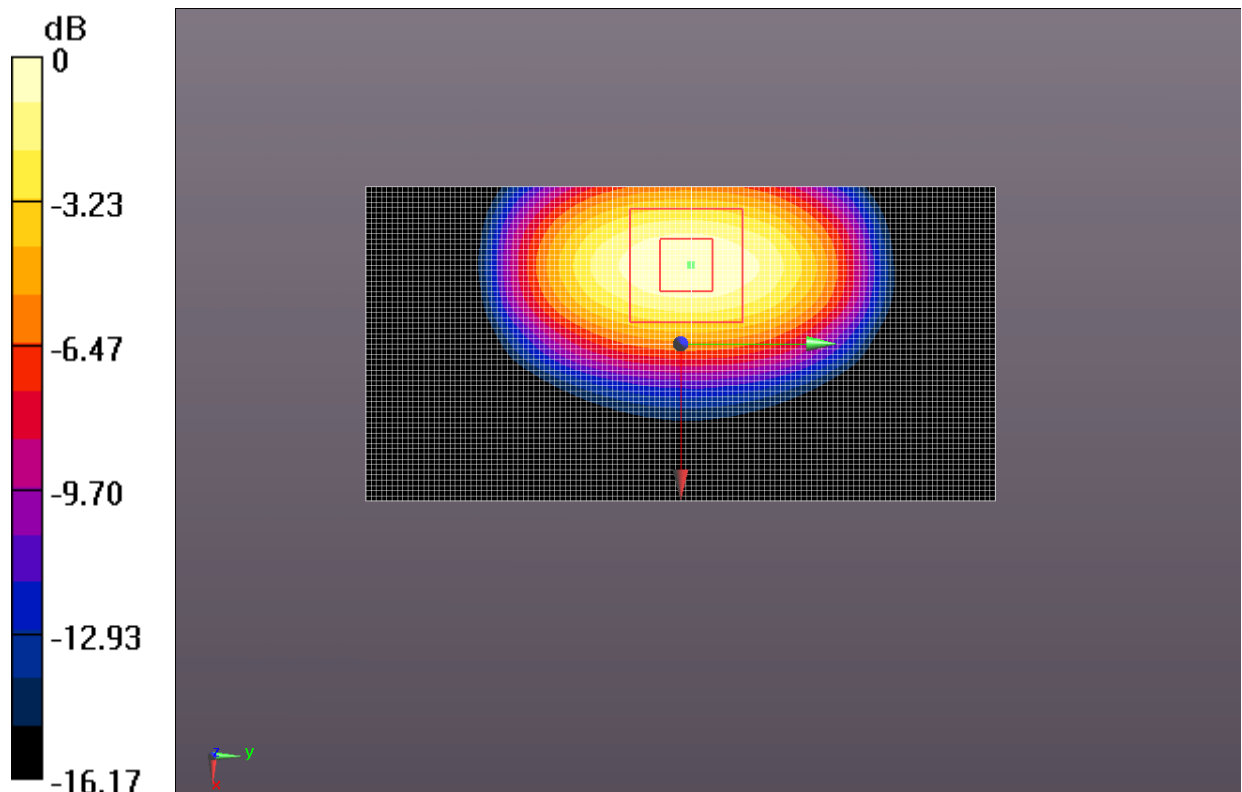
System Validation/Zoom Scan (7x7x7)/Cube 0: Measurement grid: $dx=5\text{mm}$, $dy=5\text{mm}$, $dz=5\text{mm}$

Reference Value = 77.854 V/m ; Power Drift = -0.11 dB

Peak SAR (extrapolated) = 17.4 W/kg

SAR(1 g) = 9.65 W/kg; SAR(10 g) = 5.13 W/kg

Maximum value of SAR (measured) = 11.8 W/kg



0 dB = 11.8 W/kg = 10.72 dBW/kg

Fig.B.6 validation 1800MHz 250mW

1900MHz

Date: 2017-2-12

Electronics: DAE4 Sn786

Medium: Head 1900 MHz

Medium parameters used: $f = 1900$ MHz; $\sigma = 1.419$ S/m; $\epsilon_r = 40.662$; $\rho = 1000$ kg/m³

Ambient Temperature: 22.9°C Liquid Temperature: 22.5°C

Communication System: CW Frequency: 1900 MHz Duty Cycle: 1:1

Probe: ES3DV3 - SN3151 ConvF (4.88, 4.88, 4.88)

System Validation /Area Scan (81x121x1): Interpolated grid: dx=1.000 mm, dy=1.000 mm

Reference Value = 91.684 V/m; Power Drift = -0.07 dB

Fast SAR: SAR(1 g) = 10.7 W/kg; SAR(10 g) = 5.42 W/kg

Maximum value of SAR (interpolated) = 12.7 W/kg

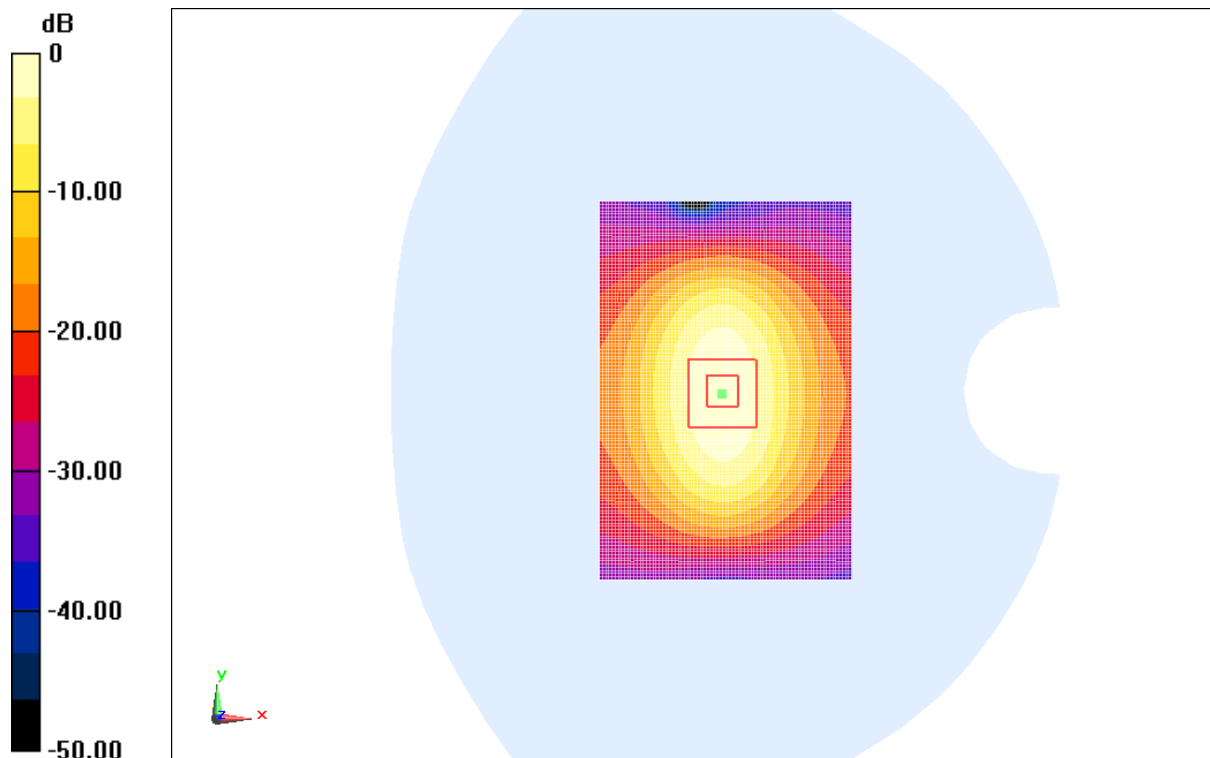
System Validation /Zoom Scan (7x7x7)/Cube 0: Measurement grid: dx=5mm, dy=5mm, dz=5mm

Reference Value = 91.684 V/m; Power Drift = -0.07 dB

Peak SAR (extrapolated) = 18.8 W/kg

SAR(1 g) = 10.5 W/kg; SAR(10 g) = 5.36 W/kg

Maximum value of SAR (measured) = 11.9 W/kg



0 dB = 11.9 W/kg = 10.76 dBW/kg

Fig.B.7validation 1900MHz 250mW

1900MHz

Date: 2017-2-12

Electronics: DAE4 Sn786

Medium: Body 1900 MHz

Medium parameters used: $f = 1900$ MHz; $\sigma = 1.548$ S/m; $\epsilon_r = 52.95$; $\rho = 1000$ kg/m³

Ambient Temperature: 22.9°C Liquid Temperature: 22.5°C

Communication System: CW Frequency: 1900 MHz Duty Cycle: 1:1

Probe: ES3DV3 - SN3151 ConvF (4.49, 4.49, 4.49)

System validation /Area Scan (81x121x1): Interpolated grid: dx=1.000 mm, dy=1.000 mm

Reference Value = 62.745 V/m; Power Drift = -0.02 dB

Fast SAR: SAR(1 g) = 10.9 W/kg; SAR(10 g) = 5.62 W/kg

Maximum value of SAR (interpolated) = 12.8 W/kg

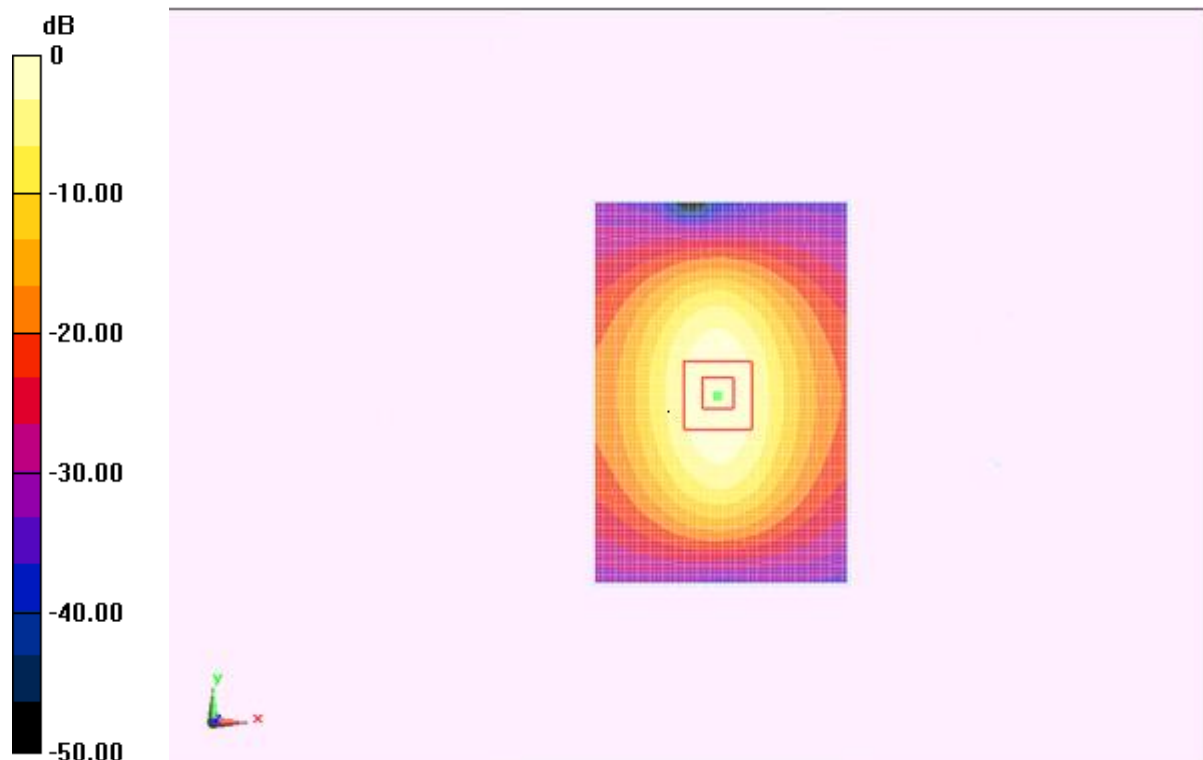
System validation /Zoom Scan (7x7x7)/Cube 0: Measurement grid: dx=5mm, dy=5mm, dz=5mm

Reference Value = 62.745 V/m; Power Drift = -0.02 dB

Peak SAR (extrapolated) = 19.6 W/kg

SAR(1 g) = 10.6 W/kg; SAR(10 g) = 5.51 W/kg

Maximum value of SAR (measured) = 12.3 W/kg



0 dB = 12.3 W/kg = 10.90 dBW/kg

Fig.B.8validation 1900MHz 250Mw

2450MHz

Date: 2017-2-15

Electronics: DAE4 Sn786

Medium: Head 2450 MHz

Medium parameters used: $f = 2450$ MHz; $\sigma = 1.853$ S/m; $\epsilon_r = 37.874$; $\rho = 1000$ kg/m³

Ambient Temperature: 22.0°C Liquid Temperature: 21.6°C

Communication System: CW Frequency: 2450 MHz Duty Cycle: 1:1

Probe: ES3DV3 - SN3151 ConvF (4.44, 4.44, 4.44)

System Validation /Area Scan (61x81x1): Interpolated grid: dx=1.000 mm, dy=1.000 mm

Reference Value = 85.664 V/m; Power Drift = -0.09 dB

Fast SAR: SAR(1 g) = 13.0 W/kg; SAR(10 g) = 5.97 W/kg

Maximum value of SAR (interpolated) = 16.7 W/kg

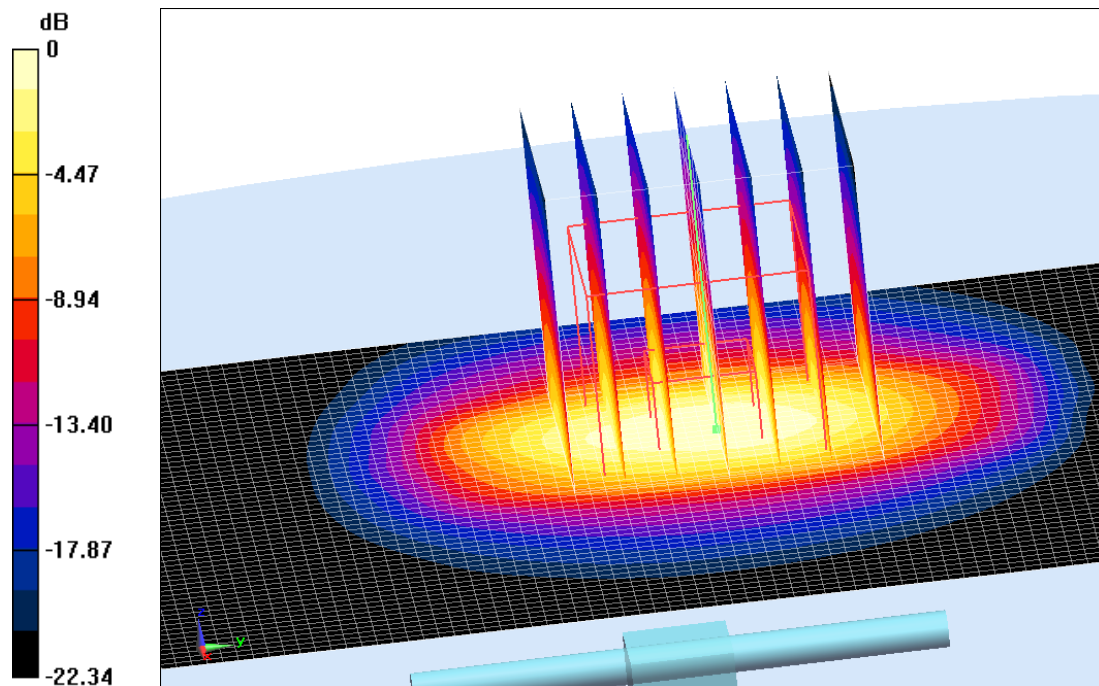
System Validation /Zoom Scan (7x7x7)/Cube 0: Measurement grid: dx=5mm, dy=5mm, dz=5mm

Reference Value = 85.664 V/m; Power Drift = -0.09 dB

Peak SAR (extrapolated) = 26.23 W/kg

SAR(1 g) = 12.7 W/kg; SAR(10 g) = 5.88 W/kg

Maximum value of SAR (measured) = 15.6 W/kg



0 dB = 15.6 W/kg = 11.93 dBW/kg

Fig.B.9validation 2450MHz 250mW

2450MHz

Date: 2017-2-15

Electronics: DAE4 Sn786

Medium: Body 2450 MHz

Medium parameters used: $f = 2450$ MHz; $\sigma = 1.914$ S/m; $\epsilon_r = 54.654$; $\rho = 1000$ kg/m³

Ambient Temperature: 22.0°C Liquid Temperature: 21.6°C

Communication System: CW Frequency: 2450 MHz Duty Cycle: 1:1

Probe: ES3DV3 - SN3151 ConvF (4.23, 4.23, 4.23)

System Validation/Area Scan (81x101x1): Interpolated grid: $dx=1.000$ mm, $dy=1.000$ mm

Reference Value = 88.556 V/m; Power Drift = 0.01 dB

Fast SAR: SAR(1 g) = 12.4 W/kg; SAR(10 g) = 5.82 W/kg

Maximum value of SAR (interpolated) = 14.0 W/kg

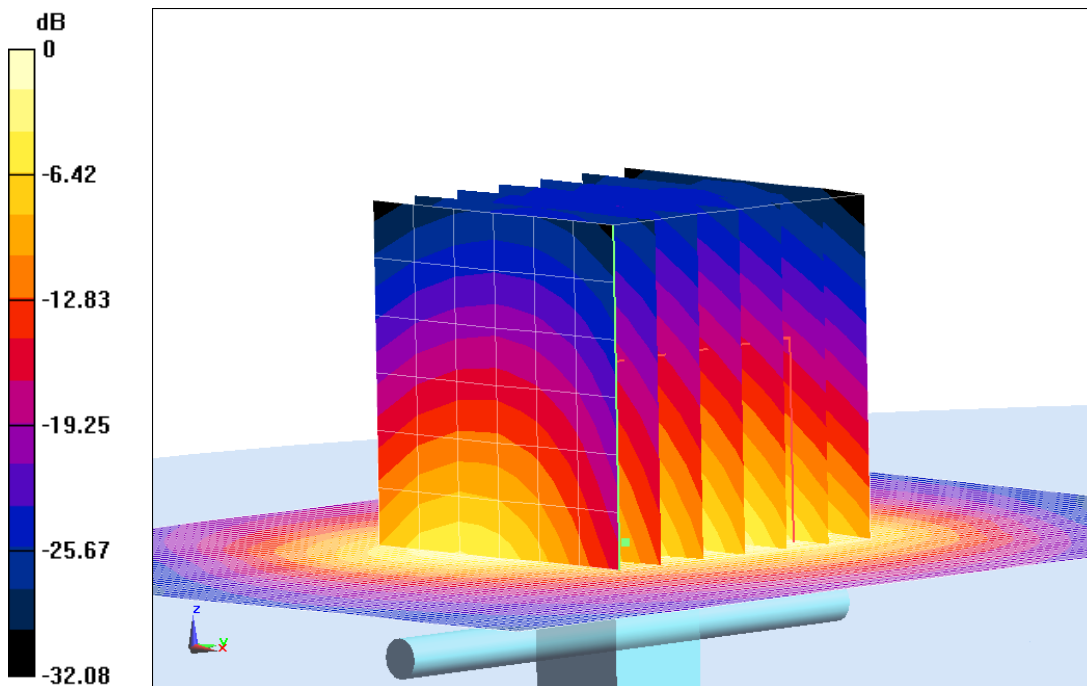
System Validation/Zoom Scan (7x7x7)/Cube 0: Measurement grid: $dx=5$ mm, $dy=5$ mm, $dz=5$ mm

Reference Value = 88.556 V/m; Power Drift = 0.01 dB

Peak SAR (extrapolated) = 26.27 W/kg

SAR(1 g) = 12.6 W/kg; SAR(10 g) = 5.88 W/kg

Maximum value of SAR (measured) = 14.6 W/kg



0 dB = 14.6 W/kg = 11.64 dB W/kg

Fig.B.10 validation 2450MHz 250mW

2550MHz

Date/Time: 2017-3-15

Electronics: DAE4 Sn786

Medium: Head 2550 MHz

Medium parameters used: $f = 2550$ MHz; $\sigma = 1.936$ S/m; $\epsilon_r = 38.657$; $\rho = 1000$ kg/m³

Ambient Temperature: 22.1°C Liquid Temperature: 21.6°C

Communication System: CW_TMC Frequency: 2550 MHz Duty Cycle: 1:1

Probe: ES3DV3 - SN3151 ConvF (4.43, 4.43, 4.43);

System Validation/Area Scan (61x121x1): Interpolated grid: dx=1.000 mm, dy=1.000 mm

Reference Value = 85.667 V/m; Power Drift = 0.02 dB

Fast SAR: SAR(1 g) = 14.2 W/kg; SAR(10 g) = 6.50 W/kg

Maximum value of SAR (interpolated) = 17.2 W/kg

System Validation/Zoom Scan (7x7x7)/Cube 0: Measurement grid: dx=5mm, dy=5mm, dz=5mm

Reference Value = 85.667 V/m; Power Drift = 0.02 dB

Peak SAR (extrapolated) = 30.3 W/kg

SAR(1 g) = 13.8 W/kg; SAR(10 g) = 6.47 W/kg

Maximum value of SAR (measured) = 17.1 W/kg

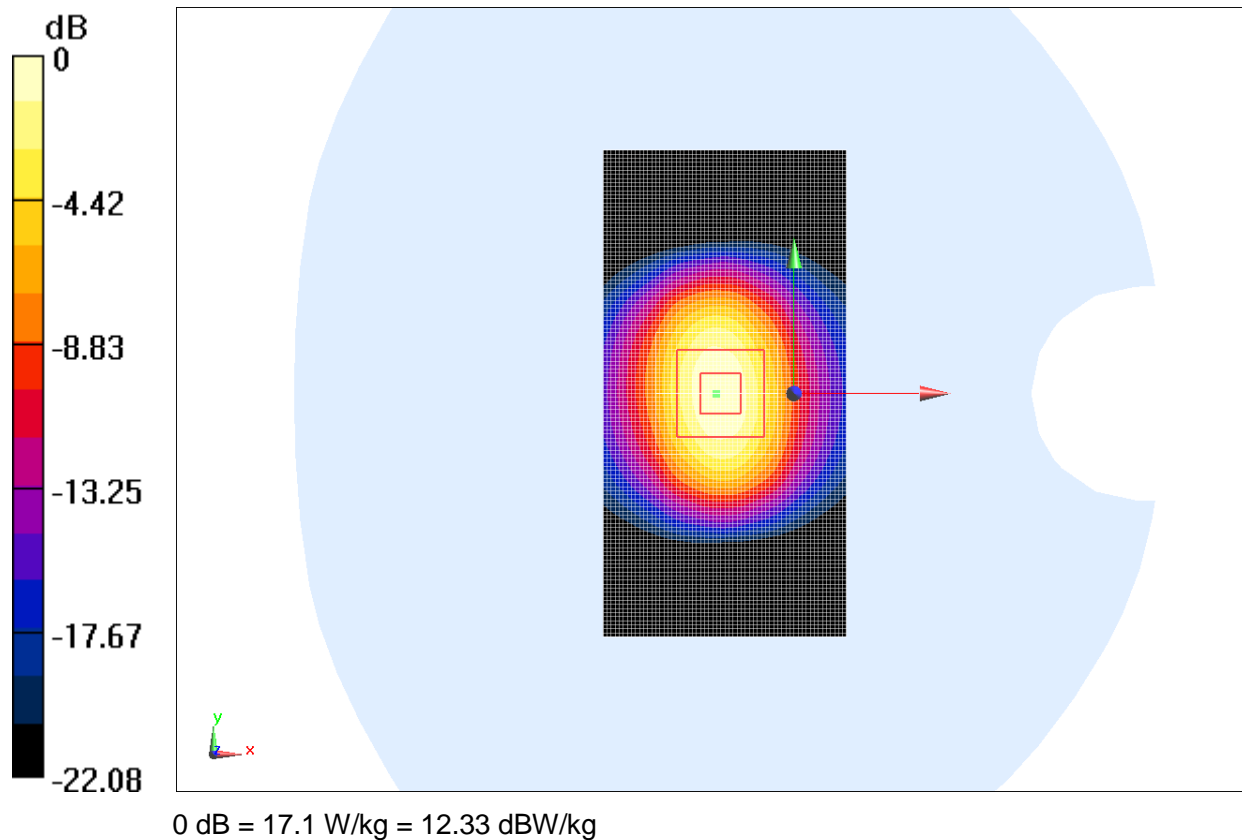


Fig.B.11 validation 2550MHz 250mW

2550MHz

Date: 2017-3-15

Electronics: DAE4 Sn786

Medium: Body 2550 MHz

Medium parameters used: $f = 2550$ MHz; $\sigma = 2.048$ S/m; $\epsilon_r = 51.643$; $\rho = 1000$ kg/m³

Ambient Temperature: 22.5°C Liquid Temperature: 22.0°C

Communication System: CW Frequency: 2550 MHz Duty Cycle: 1:1

Probe: ES3DV3 - SN3151 ConvF (4.09, 4.09, 4.09)

System Validation /Area Scan (81x121x1): Interpolated grid: dx=1.000 mm, dy=1.000 mm

Reference Value = 88.174 V/m; Power Drift = -0.06 dB

Fast SAR: SAR(1 g) = 14.6 W/kg; SAR(10 g) = 6.48W/kg

Maximum value of SAR (interpolated) = 22.8 W/kg

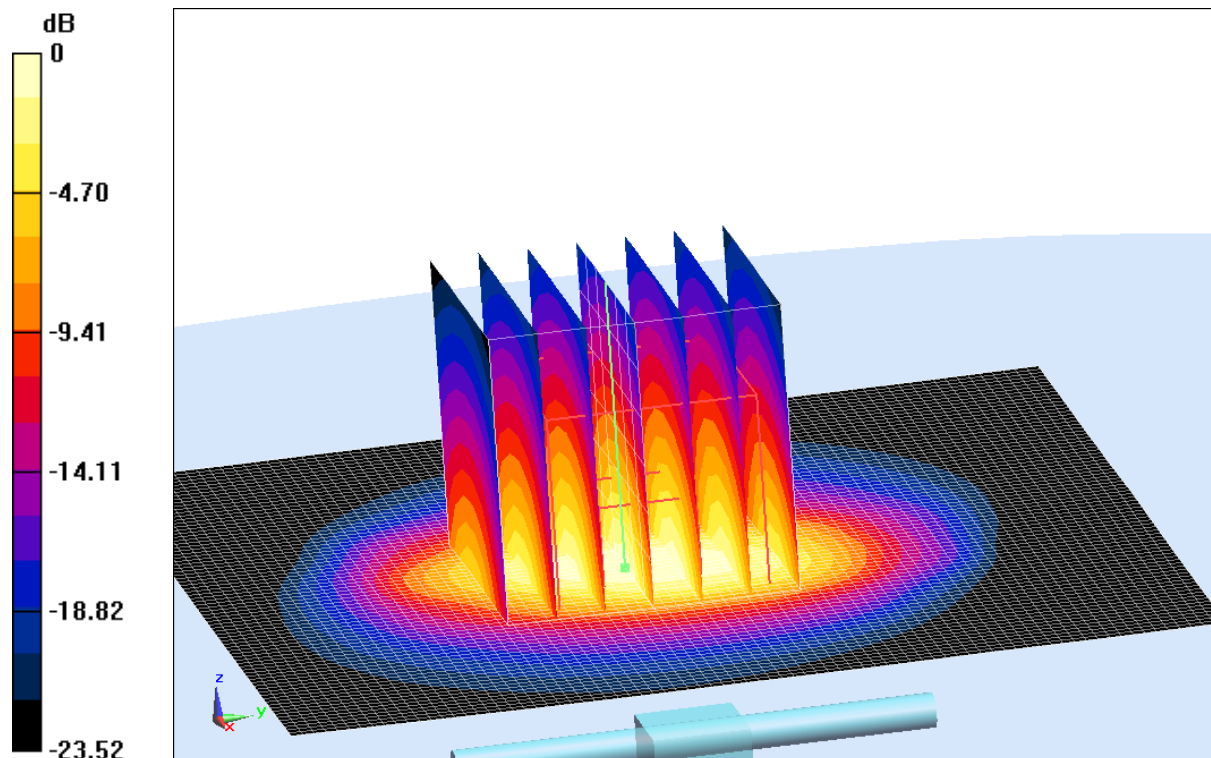
System Validation /Zoom Scan (7x7x7)/Cube 0: Measurement grid: dx=5mm, dy=5mm, dz=5mm

Reference Value = 88.174 V/m; Power Drift = -0.06 dB

Peak SAR (extrapolated) = 31.9 W/kg

SAR(1 g) = 14.3 W/kg; SAR(10 g) = 6.46 W/kg

Maximum value of SAR (measured) = 22.7 W/kg



0 dB = 22.7 W/kg = 13.56 dB W/kg

Fig.B.12 validation 2550MHz 250mW



The SAR system verification must be required that the area scan estimated 1-g SAR is within 3% of the zoom scan 1-g SAR.

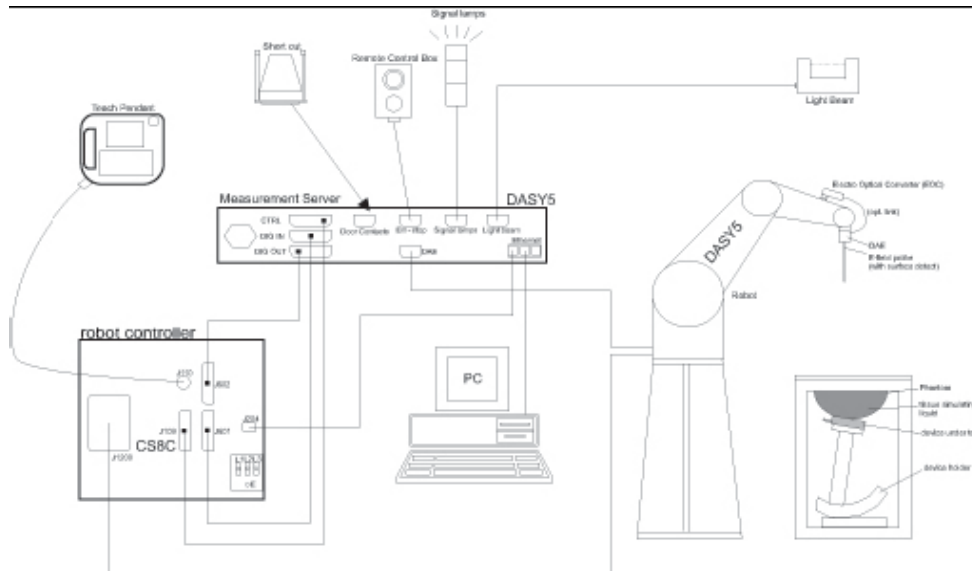
Table B.1 Comparison between area scan and zoom scan for system verification

| Band | Position | Area scan (1g) | Zoom scan (1g) | Drift (%) |
|-------------|-----------------|-----------------------|-----------------------|------------------|
| 750 | Head | 2.20 | 2.16 | -1.82 |
| 750 | Body | 2.17 | 2.14 | -1.38 |
| 835 | Head | 2.28 | 2.25 | -1.32 |
| 835 | Body | 2.30 | 2.28 | -0.87 |
| 1800 | Head | 9.61 | 9.48 | -1.35 |
| 1800 | Body | 9.88 | 9.65 | -2.33 |
| 1900 | Head | 10.7 | 10.5 | -1.87 |
| 1900 | Body | 10.9 | 10.6 | -2.75 |
| 2450 | Head | 13.0 | 12.7 | -2.31 |
| 2450 | Body | 12.4 | 12.6 | 1.61 |
| 2550 | Head | 14.2 | 13.8 | -2.82 |
| 2550 | Body | 14.6 | 14.3 | -2.05 |

ANNEX C SAR Measurement Setup

C.1 Measurement Set-up

DASY5 system for performing compliance tests is illustrated above graphically. This system consists of the following items:



Picture C.1 SAR Lab Test Measurement Set-up

- A standard high precision 6-axis robot (Stäubli TX=RX family) with controller, teach pendant and software. An arm extension for accommodating the data acquisition electronics (DAE).
- An isotropic field probe optimized and calibrated for the targeted measurement.
- A data acquisition electronics (DAE) which performs the signal amplification, signal multiplexing, AD-conversion, offset measurements, mechanical surface detection, collision detection, etc. The unit is battery powered with standard or rechargeable batteries. The signal is optically transmitted to the EOC.
- The Electro-optical converter (EOC) performs the conversion from optical to electrical signals for the digital communication to the DAE. To use optical surface detection, a special version of the EOC is required. The EOC signal is transmitted to the measurement server.
- The function of the measurement server is to perform the time critical tasks such as signal filtering, control of the robot operation and fast movement interrupts.
- The Light Beam used is for probe alignment. This improves the (absolute) accuracy of the probe positioning.
- A computer running WinXP and the DASY5 software.
- Remote control and teach pendant as well as additional circuitry for robot safety such as
- warning lamps, etc.
- The phantom, the device holder and other accessories according to the targeted measurement.

C.2 DASY5 E-field Probe System

The SAR measurements were conducted with the dosimetric probe designed in the classical triangular configuration and optimized for dosimetric evaluation. The probe is constructed using the thick film technique; with printed resistive lines on ceramic substrates. The probe is equipped with an optical multifiber line ending at the front of the probe tip. It is connected to the EOC box on the robot arm and provides an automatic detection of the phantom surface. Half of the fibers are connected to a pulsed infrared transmitter, the other half to a synchronized receiver. As the probe approaches the surface, the reflection from the surface produces a coupling from the transmitting to the receiving fibers. This reflection increases first during the approach, reaches maximum and then decreases. If the probe is flatly touching the surface, the coupling is zero. The distance of the coupling maximum to the surface is independent of the surface reflectivity and largely independent of the surface to probe angle. The DASY5 software reads the reflection during a software approach and looks for the maximum using 2nd order curve fitting. The approach is stopped at reaching the maximum.

Probe Specifications:

| | |
|-----------------------|--|
| Model: | ES3DV3, EX3DV4 |
| Frequency | 10MHz — 6.0GHz(EX3DV4) |
| Range: | 10MHz — 4GHz(ES3DV3) |
| Calibration: | In head and body simulating tissue at Frequencies from 835 up to 5800MHz |
| Linearity: | ± 0.2 dB(30 MHz to 6 GHz) for EX3DV4 ± 0.2 dB(30 MHz to 4 GHz) for ES3DV3 |
| Dynamic Range: | 10 mW/kg — 100W/kg |
| Probe Length: | 330 mm |
| Probe Tip | |
| Length: | 20 mm |
| Body Diameter: | 12 mm |
| Tip Diameter: | 2.5 mm (3.9 mm for ES3DV3) |
| Tip-Center: | 1 mm (2.0mm for ES3DV3) |
| Application: | SAR Dosimetry Testing Compliance tests of mobile phones Dosimetry in strong gradient fields |



Picture C.2 Near-field Probe



Picture C.3 E-field Probe

C.3 E-field Probe Calibration

Each E-Probe/Probe Amplifier combination has unique calibration parameters. A TEM cell calibration procedure is conducted to determine the proper amplifier settings to enter in the probe parameters. The amplifier settings are determined for a given frequency by subjecting the probe to a known E-field density (1 mW/cm²) using an RF Signal generator, TEM cell, and RF Power Meter.

The free space E-field from amplified probe outputs is determined in a test chamber. This calibration can be performed in a TEM cell if the frequency is below 1 GHz and in a waveguide or other methodologies above 1 GHz for free space. For the free space calibration, the probe is placed

in the volumetric center of the cavity and at the proper orientation with the field. The probe is then rotated 360 degrees until the three channels show the maximum reading. The power density readings equates to 1 mW/ cm².

E-field temperature correlation calibration is performed in a flat phantom filled with the appropriate simulated brain tissue. The E-field in the medium correlates with the temperature rise in the dielectric medium. For temperature correlation calibration a RF transparent thermistor-based temperature probe is used in conjunction with the E-field probe.

$$SAR = C \frac{\Delta T}{\Delta t}$$

Where:

Δt = Exposure time (30 seconds),

C = Heat capacity of tissue (brain or muscle),

ΔT = Temperature increase due to RF exposure.

$$SAR = \frac{|E|^2 \cdot \sigma}{\rho}$$

Where:

σ = Simulated tissue conductivity,

ρ = Tissue density (kg/m³).

C.4 Other Test Equipment

C.4.1 Data Acquisition Electronics (DAE)

The data acquisition electronics consist of a highly sensitive electrometer-grade preamplifier with auto-zeroing, a channel and gain-switching multiplexer, a fast 16 bit AD-converter and a command decoder with a control logic unit. Transmission to the measurement server is accomplished through an optical downlink for data and status information, as well as an optical uplink for commands and the clock.

The mechanical probe mounting device includes two different sensor systems for frontal and sideways probe contacts. They are used for mechanical surface detection and probe collision detection.

The input impedance of the DAE is 200 MOhm; the inputs are symmetrical and floating. Common mode rejection is above 80 dB.



PictureC.4: DAE

C.4.2 Robot

The SPEAG DASY system uses the high precision robots (DASY5: RX160L) type from Stäubli SA (France). For the 6-axis controller system, the robot controller version from Stäubli is used. The Stäubli robot series have many features that are important for our application:

- High precision (repeatability 0.02mm)
- High reliability (industrial design)
- Low maintenance costs (virtually maintenance free due to direct drive gears; no belt drives)
- Jerk-free straight movements (brushless synchron motors; no stepper motors)
- Low ELF interference (motor control fields shielded via the closed metallic construction shields)



Picture C.5 DASY 5

C.4.3 Measurement Server

The Measurement server is based on a PC/104 CPU board with CPU (DASY5: 400 MHz, Intel Celeron), chipdisk (DASY5:128MB), RAM (DASY5:128MB). The necessary circuits for communication with the DAE electronic box, as well as the 16 bit AD converter system for optical detection and digital I/O interface are contained on the DASY I/O board, which is directly connected to the PC/104 bus of the CPU board.

The measurement server performs all real-time data evaluation of field measurements and surface detection, controls robot movements and handles safety operation. The PC operating system cannot interfere with these time critical processes. All connections are supervised by a watchdog, and disconnection of any of the cables to the measurement server will automatically disarm the robot and disable all program-controlled robot movements. Furthermore, the measurement server is equipped with an expansion port which is reserved for future applications. Please note that this expansion port does not have a standardized pinout, and therefore only devices provided by SPEAG can be connected. Devices from any other supplier could seriously damage the measurement server.



Picture C.6 Server for DASY 5

C.4.4 Device Holder for Phantom

The SAR in the phantom is approximately inversely proportional to the square of the distance between the source and the liquid surface. For a source at 5mm distance, a positioning uncertainty of $\pm 0.5\text{mm}$ would produce a SAR uncertainty of $\pm 20\%$. Accurate device positioning is therefore crucial for accurate and repeatable measurements. The positions in which the devices must be measured are defined by the standards.

The DASY device holder is designed to cope with the different positions given in the standard. It has two scales for device rotation (with respect to the body axis) and device inclination (with respect to the line between the ear reference points). The rotation centers for both scales is the ear reference point (ERP). Thus the device needs no repositioning when changing the angles.

The DASY device holder is constructed of low-loss POM material having the following dielectric

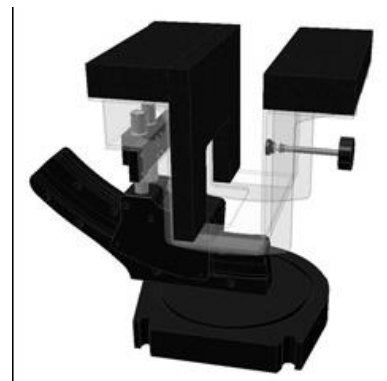
parameters: relative permittivity $\epsilon = 3$ and loss tangent $\delta = 0.02$. The amount of dielectric material has been reduced in the closest vicinity of the device, since measurements have suggested that the influence of the clamp on the test results could thus be lowered.

<Laptop Extension Kit>

The extension is lightweight and made of POM, acrylic glass and foam. It fits easily on the upper part of the Mounting Device in place of the phone positioner. The extension is fully compatible with the Twin-SAM and ELI phantoms.



Picture C.7-1: Device Holder



Picture C.7-2: Laptop Extension Kit

C.4.5 Phantom

The SAM Twin Phantom V4.0 is constructed of a fiberglass shell integrated in a table. The shape of the shell is based on data from an anatomical study designed to

Represent the 90th percentile of the population. The phantom enables the dissymmetric evaluation of SAR for both left and right handed handset usage, as well as body-worn usage using the flat phantom region. Reference markings on the Phantom allow the complete setup of all predefined phantom positions and measurement grids by manually teaching three points in the robot. The shell phantom has a 2mm shell thickness (except the ear region where shell thickness increases to 6 mm).

Shell Thickness: 2 ± 0.2 mm
Filling Volume: Approx. 25 liters
Dimensions: 810 x 1000 x 500 mm (H x L x W)
Available: Special

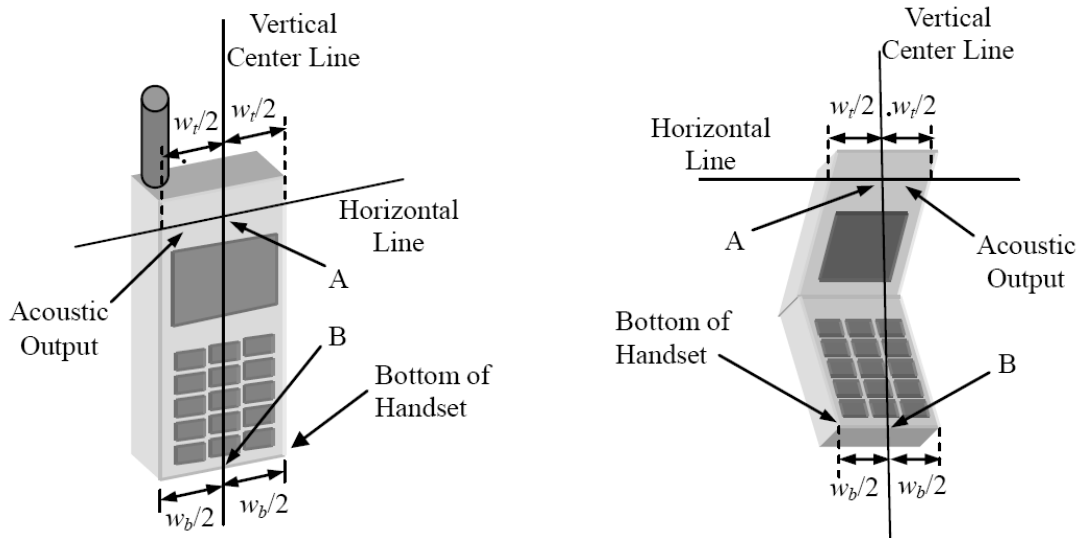


Picture C.8: SAM Twin Phantom

ANNEX D Position of the wireless device in relation to the phantom

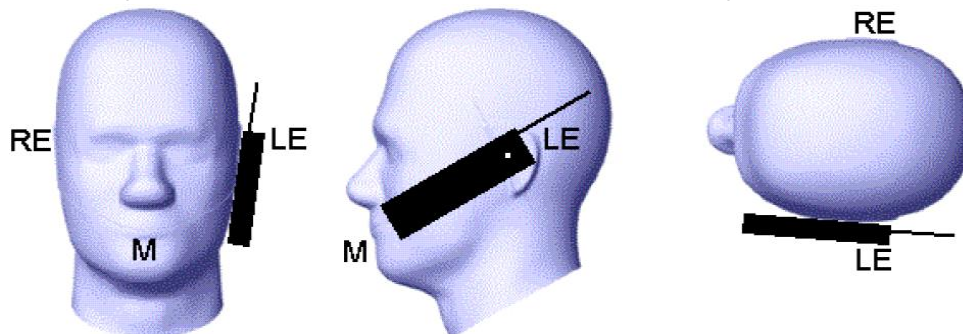
D.1 General considerations

This standard specifies two handset test positions against the head phantom – the “cheek” position and the “tilt” position.

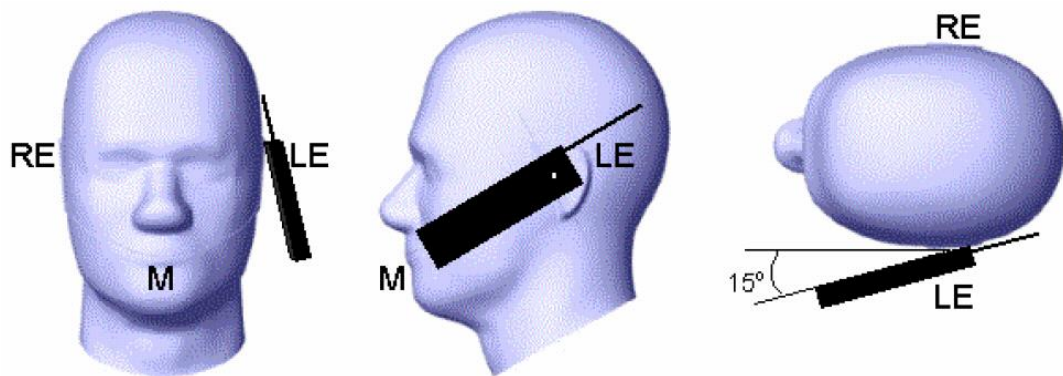


- w_t Width of the handset at the level of the acoustic
- w_b Width of the bottom of the handset
- A Midpoint of the width w_t of the handset at the level of the acoustic output
- B Midpoint of the width w_b of the bottom of the handset

Picture D.1-a Typical “fixed” case handset Picture D.1-b Typical “clam-shell” case handset



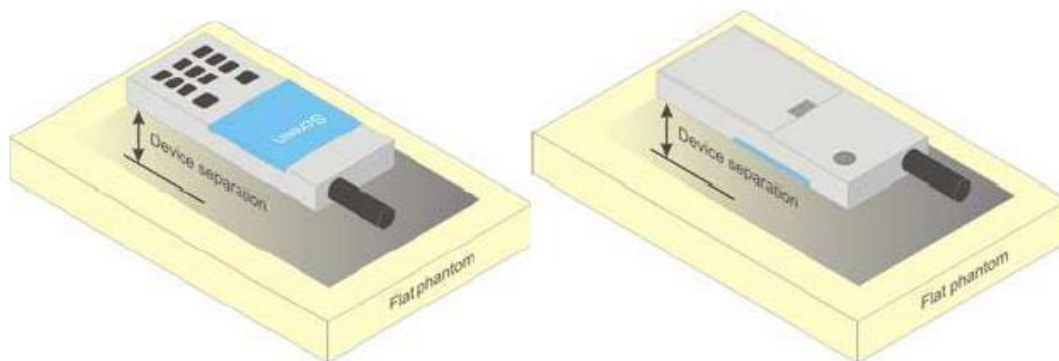
Picture D.2 Cheek position of the wireless device on the left side of SAM



Picture D.3 Tilt position of the wireless device on the left side of SAM

D.2 Body-worn device

A typical example of a body-worn device is a mobile phone, wireless enabled PDA or other battery operated wireless device with the ability to transmit while mounted on a person's body using a carry accessory approved by the wireless device manufacturer.

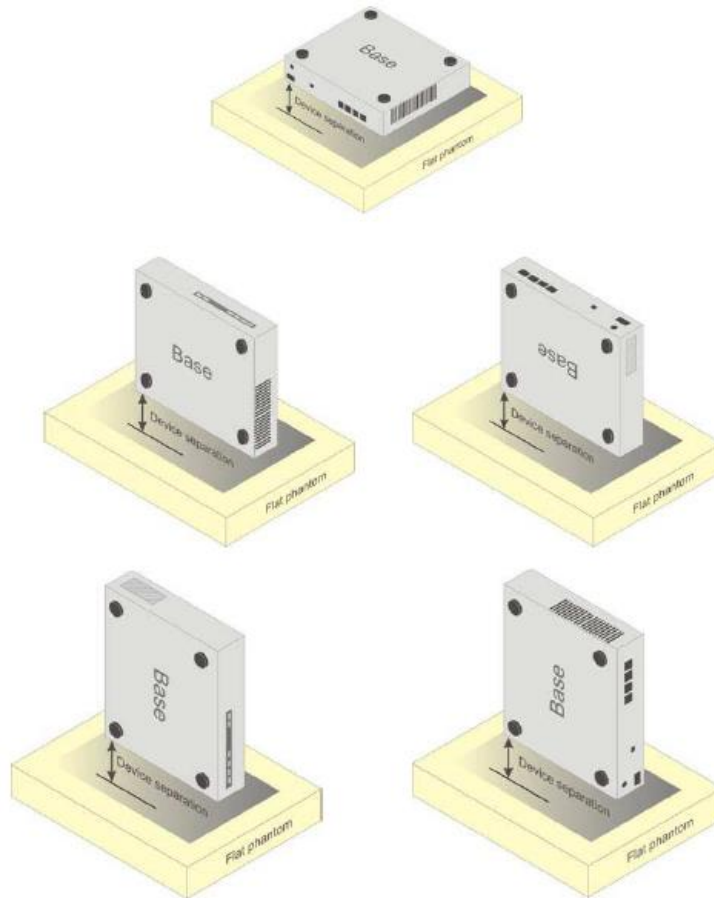


Picture D.4 Test positions for body-worn devices

D.3 Desktop device

A typical example of a desktop device is a wireless enabled desktop computer placed on a table or desk when used.

The DUT shall be positioned at the distance and in the orientation to the phantom that corresponds to the intended use as specified by the manufacturer in the user instructions. For devices that employ an external antenna with variable positions, tests shall be performed for all antenna positions specified. Picture 8.5 show positions for desktop device SAR tests. If the intended use is not specified, the device shall be tested directly against the flat phantom.



Picture D.5 Test positions for desktop devices

D.4 DUT Setup Photos



Picture D.6

ANNEX E Equivalent Media Recipes

The liquid used for the frequency range of 700-6000 MHz consisted of water, sugar, salt, preventol, glycol monobutyl and Cellulose. The liquid has been previously proven to be suited for worst-case. The Table E.1 shows the detail solution. It's satisfying the latest tissue dielectric parameters requirements proposed by the IEEE 1528 and IEC 62209.

Table E.1: Composition of the Tissue Equivalent Matter

| Frequency (MHz) | 835 Head | 835 Body | 1900 Head | 1900 Body | 2450 Head | 2450 Body | 5800 Head | 5800 Body |
|------------------------------------|----------------------------------|----------------------------------|----------------------------------|----------------------------------|----------------------------------|----------------------------------|----------------------------------|----------------------------------|
| Ingredients (% by weight) | | | | | | | | |
| Water | 41.45 | 52.5 | 55.242 | 69.91 | 58.79 | 72.60 | 65.53 | 65.53 |
| Sugar | 56.0 | 45.0 | \ | \ | \ | \ | \ | \ |
| Salt | 1.45 | 1.4 | 0.306 | 0.13 | 0.06 | 0.18 | \ | \ |
| Preventol | 0.1 | 0.1 | \ | \ | \ | \ | \ | \ |
| Cellulose | 1.0 | 1.0 | \ | \ | \ | \ | \ | \ |
| Glycol Monobutyl | \ | \ | 44.452 | 29.96 | 41.15 | 27.22 | \ | \ |
| Diethylenglycol monohexylether | \ | \ | \ | \ | \ | \ | 17.24 | 17.24 |
| Triton X-100 | \ | \ | \ | \ | \ | \ | 17.24 | 17.24 |
| Dielectric Parameters Target Value | $\epsilon=41.5$ $\sigma=0.90$ | $\epsilon=55.2$ $\sigma=0.97$ | $\epsilon=40.0$ $\sigma=1.40$ | $\epsilon=53.3$ $\sigma=1.52$ | $\epsilon=39.2$ $\sigma=1.80$ | $\epsilon=52.7$ $\sigma=1.95$ | $\epsilon=35.3$ $\sigma=5.27$ | $\epsilon=48.2$ $\sigma=6.00$ |

Note: There is a little adjustment respectively for 750, 1800 and 2600, based on the recipe of closest frequency in table E.1

ANNEX F System Validation

The SAR system must be validated against its performance specifications before it is deployed. When SAR probes, system components or software are changed, upgraded or recalibrated, these must be validated with the SAR system(s) that operates with such components.

Table F.1: System Validation

| Probe SN. | Liquid name | Validation date | Frequency point | Status (OK or Not) |
|-----------|--------------|-----------------|-----------------|--------------------|
| 3151 | Head 750MHz | 2016-12-10 | 750 MHz | OK |
| 3151 | Head 900MHz | 2016-12-10 | 900 MHz | OK |
| 3151 | Head 1800MHz | 2016-12-12 | 1800 MHz | OK |
| 3151 | Head 1900MHz | 2016-12-12 | 1900 MHz | OK |
| 3151 | Head 2450MHz | 2016-12-13 | 2450 MHz | OK |
| 3151 | Head 2550MHz | 2016-12-13 | 2550 MHz | OK |
| 3151 | Body 750MHz | 2016-12-10 | 750 MHz | OK |
| 3151 | Body 900MHz | 2016-12-10 | 900 MHz | OK |
| 3151 | Body 1800MHz | 2016-12-12 | 1800 MHz | OK |
| 3151 | Body 1900MHz | 2016-12-12 | 1900 MHz | OK |
| 3151 | Body 2450MHz | 2016-12-13 | 2450 MHz | OK |
| 3151 | Body 2550MHz | 2016-12-13 | 2550 MHz | OK |

ANNEX G DAE Calibration Certificate

DAE4 SN:786 Calibration Certificate

Calibration Laboratory of
Schmid & Partner
Engineering AG
Zeughausstrasse 43, 8004 Zurich, Switzerland



S Schweizerischer Kalibrierdienst
C Service suisse d'étalonnage
S Servizio svizzero di taratura
S Swiss Calibration Service

Accredited by the Swiss Accreditation Service (SAS)
The Swiss Accreditation Service is one of the signatories to the EA
Multilateral Agreement for the recognition of calibration certificates

Accreditation No.: **SCS 0108**

Client **CTTL (Auden)**

Certificate No: **DAE4-786_Dec16**

CALIBRATION CERTIFICATE

Object **DAE4 - SD 000 D04 BM - SN: 786**

Calibration procedure(s) **QA CAL-06.v29
Calibration procedure for the data acquisition electronics (DAE)**


Calibration date: **December 08, 2016**

This calibration certificate documents the traceability to national standards, which realize the physical units of measurements (SI).
The measurements and the uncertainties with confidence probability are given on the following pages and are part of the certificate.

All calibrations have been conducted in the closed laboratory facility: environment temperature (22 ± 3)°C and humidity < 70%.

Calibration Equipment used (M&TE critical for calibration)

| Primary Standards | ID # | Cal Date (Certificate No.) | Scheduled Calibration |
|-------------------------------|--------------------|----------------------------|------------------------|
| Keithley Multimeter Type 2001 | SN: 0810278 | 09-Sep-16 (No:19065) | Sep-17 |
| Secondary Standards | ID # | Check Date (in house) | Scheduled Check |
| Auto DAE Calibration Unit | SE UWS 053 AA 1001 | 05-Jan-16 (in house check) | In house check: Jan-17 |
| Calibrator Box V2.1 | SE UMS 006 AA 1002 | 05-Jan-16 (in house check) | In house check: Jan-17 |

| | | | |
|----------------|-----------------------|--------------------------|--|
| Calibrated by: | Name Eric Hainfeld | Function Technician | Signature  |
| Approved by: | Fin Bomholt | Deputy Technical Manager |  |

Issued: December 8, 2016

This calibration certificate shall not be reproduced except in full without written approval of the laboratory.

**Calibration Laboratory of
Schmid & Partner
Engineering AG**
Zeughausstrasse 43, 8004 Zurich, Switzerland



S Schweizerischer Kalibrierdienst
C Service suisse d'étalonnage
S Servizio svizzero di taratura
S Swiss Calibration Service

Accredited by the Swiss Accreditation Service (SAS)
The Swiss Accreditation Service is one of the signatories to the EA
Multilateral Agreement for the recognition of calibration certificates

Accreditation No.: **SCS 0108**

Glossary

DAE data acquisition electronics
Connector angle information used in DASY system to align probe sensor X to the robot coordinate system.

Methods Applied and Interpretation of Parameters

- *DC Voltage Measurement:* Calibration Factor assessed for use in DASY system by comparison with a calibrated instrument traceable to national standards. The figure given corresponds to the full scale range of the voltmeter in the respective range.
- *Connector angle:* The angle of the connector is assessed measuring the angle mechanically by a tool inserted. Uncertainty is not required.
- The following parameters as documented in the Appendix contain technical information as a result from the performance test and require no uncertainty.
 - *DC Voltage Measurement Linearity:* Verification of the Linearity at +10% and -10% of the nominal calibration voltage. Influence of offset voltage is included in this measurement.
 - *Common mode sensitivity:* Influence of a positive or negative common mode voltage on the differential measurement.
 - *Channel separation:* Influence of a voltage on the neighbor channels not subject to an input voltage.
 - *AD Converter Values with inputs shorted:* Values on the internal AD converter corresponding to zero input voltage
 - *Input Offset Measurement:* Output voltage and statistical results over a large number of zero voltage measurements.
 - *Input Offset Current:* Typical value for information; Maximum channel input offset current, not considering the input resistance.
 - *Input resistance:* Typical value for information: DAE input resistance at the connector, during internal auto-zeroing and during measurement.
 - *Low Battery Alarm Voltage:* Typical value for information. Below this voltage, a battery alarm signal is generated.
 - *Power consumption:* Typical value for information. Supply currents in various operating modes.

DC Voltage Measurement

A/D - Converter Resolution nominal

High Range: 1LSB = 6.1 μ V , full range = -100...+300 mV

Low Range: 1LSB = 61nV , full range = -1.....+3mV

DASY measurement parameters: Auto Zero Time: 3 sec; Measuring time: 3 sec

| Calibration Factors | X | Y | Z |
|---------------------|---------------------------|---------------------------|---------------------------|
| High Range | 403.298 \pm 0.02% (k=2) | 403.491 \pm 0.02% (k=2) | 403.881 \pm 0.02% (k=2) |
| Low Range | 3.96445 \pm 1.50% (k=2) | 3.96537 \pm 1.50% (k=2) | 3.95169 \pm 1.50% (k=2) |

Connector Angle

| | |
|---|-------------------------------------|
| Connector Angle to be used in DASY system | 226.0 $^{\circ}$ \pm 1 $^{\circ}$ |
|---|-------------------------------------|

Appendix (Additional assessments outside the scope of SCS0108)

1. DC Voltage Linearity

| High Range | Reading (μV) | Difference (μV) | Error (%) |
|-------------------|---------------------------|------------------------------|-----------|
| Channel X + Input | 200026.19 | -5.79 | -0.00 |
| Channel X + Input | 20005.74 | 1.53 | 0.01 |
| Channel X - Input | -19998.94 | 6.48 | -0.03 |
| Channel Y + Input | 200029.93 | -2.27 | -0.00 |
| Channel Y + Input | 20002.71 | -1.40 | -0.01 |
| Channel Y - Input | -20003.56 | 1.97 | -0.01 |
| Channel Z + Input | 200031.82 | -0.21 | -0.00 |
| Channel Z + Input | 20003.07 | -0.95 | -0.00 |
| Channel Z - Input | -20004.84 | 0.72 | -0.00 |

| Low Range | Reading (μV) | Difference (μV) | Error (%) |
|-------------------|---------------------------|------------------------------|-----------|
| Channel X + Input | 2002.07 | 1.48 | 0.07 |
| Channel X + Input | 200.89 | 0.14 | 0.07 |
| Channel X - Input | -199.34 | -0.07 | 0.04 |
| Channel Y + Input | 1999.99 | -0.49 | -0.02 |
| Channel Y + Input | 200.10 | -0.60 | -0.30 |
| Channel Y - Input | -200.06 | -0.69 | 0.34 |
| Channel Z + Input | 2000.67 | 0.22 | 0.01 |
| Channel Z + Input | 199.73 | -0.77 | -0.38 |
| Channel Z - Input | -201.22 | -1.74 | 0.87 |

2. Common mode sensitivity

DASY measurement parameters: Auto Zero Time: 3 sec; Measuring time: 3 sec

| | Common mode Input Voltage (mV) | High Range Average Reading (μV) | Low Range Average Reading (μV) |
|-----------|--------------------------------|--|---|
| Channel X | 200 | 12.75 | 10.67 |
| | - 200 | -10.14 | -11.33 |
| Channel Y | 200 | 20.16 | 19.71 |
| | - 200 | -21.14 | -21.51 |
| Channel Z | 200 | 6.53 | 6.44 |
| | - 200 | -9.02 | -9.17 |

3. Channel separation

DASY measurement parameters: Auto Zero Time: 3 sec; Measuring time: 3 sec

| | Input Voltage (mV) | Channel X (μV) | Channel Y (μV) | Channel Z (μV) |
|-----------|--------------------|-----------------------------|-----------------------------|-----------------------------|
| Channel X | 200 | - | -1.43 | -3.68 |
| Channel Y | 200 | 10.01 | - | -0.12 |
| Channel Z | 200 | 7.49 | 7.39 | - |

4. AD-Converter Values with inputs shorted

DASY measurement parameters: Auto Zero Time: 3 sec; Measuring time: 3 sec

| | High Range (LSB) | Low Range (LSB) |
|-----------|------------------|-----------------|
| Channel X | 16159 | 15833 |
| Channel Y | 15971 | 15598 |
| Channel Z | 16202 | 15888 |

5. Input Offset Measurement

DASY measurement parameters: Auto Zero Time: 3 sec; Measuring time: 3 sec

Input 10M Ω

| | Average (μ V) | min. Offset (μ V) | max. Offset (μ V) | Std. Deviation (μ V) |
|-----------|--------------------|------------------------|------------------------|---------------------------|
| Channel X | -0.28 | -1.90 | 1.06 | 0.50 |
| Channel Y | -0.27 | -1.57 | 1.37 | 0.50 |
| Channel Z | -1.30 | -2.38 | -0.44 | 0.44 |

6. Input Offset Current

Nominal input circuitry offset current on all channels: <25fA

7. Input Resistance (Typical values for information)

| | Zeroing (kOhm) | Measuring (MOhm) |
|-----------|----------------|------------------|
| Channel X | 200 | 200 |
| Channel Y | 200 | 200 |
| Channel Z | 200 | 200 |

8. Low Battery Alarm Voltage (Typical values for information)

| Typical values | Alarm Level (VDC) |
|----------------|-------------------|
| Supply (+ Vcc) | +7.9 |
| Supply (- Vcc) | -7.6 |

9. Power Consumption (Typical values for information)

| Typical values | Switched off (mA) | Stand by (mA) | Transmitting (mA) |
|----------------|-------------------|---------------|-------------------|
| Supply (+ Vcc) | +0.01 | +6 | +14 |
| Supply (- Vcc) | -0.01 | -8 | -9 |



ANNEX H Probe Calibration Certificate

Probe ES3DV3-SN: 3151 Calibration Certificate



In Collaboration with
s p e a g
CALIBRATION LABORATORY



中国认可
国际互认
校准
CALIBRATION
CNAS L0570

Add: No.51 Xueyuan Road, Haidian District, Beijing, 100191, China
Tel: +86-10-62304633-2218 Fax: +86-10-62304633-2209
E-mail: cttl@chinattl.com [Http://www.chinattl.cn](http://www.chinattl.cn)

Client

CTTL(South Branch)

Certificate No: Z16-97202

CALIBRATION CERTIFICATE

Object: ES3DV3 - SN:3151

Calibration Procedure(s): FD-Z11-004-01
Calibration Procedures for Dosimetric E-field Probes

Calibration date: November 17, 2016

This calibration Certificate documents the traceability to national standards, which realize the physical units of measurements(SI). The measurements and the uncertainties with confidence probability are given on the following pages and are part of the certificate.

All calibrations have been conducted in the closed laboratory facility: environment temperature(22±3)°C and humidity<70%.

Calibration Equipment used (M&TE critical for calibration)

| Primary Standards | ID # | Cal Date(Calibrated by, Certificate No.) | Scheduled Calibration |
|-------------------------|-------------|--|-----------------------|
| Power Meter NRP2 | 101919 | 27-Jun-16 (CTTL, No.J16X04777) | Jun-17 |
| Power sensor NRP-Z91 | 101547 | 27-Jun-16 (CTTL, No.J16X04777) | Jun-17 |
| Power sensor NRP-Z91 | 101548 | 27-Jun-16 (CTTL, No.J16X04777) | Jun-17 |
| Reference10dBAttenuator | 18N50W-10dB | 13-Mar-16(CTTL,No.J16X01547) | Mar-18 |
| Reference20dBAttenuator | 18N50W-20dB | 13-Mar-16(CTTL, No.J16X01548) | Mar-18 |
| Reference Probe EX3DV4 | SN 7307 | 19-Feb-16(SPEAG,No.EX3-7307_Feb16) | Feb-17 |
| DAE4 | SN 1331 | 21-Jan-16(SPEAG, No.DAE4-1331_Jan16) | Jan -17 |
| Secondary Standards | ID # | Cal Date(Calibrated by, Certificate No.) | Scheduled Calibration |
| SignalGeneratorMG3700A | 6201052605 | 27-Jun-16 (CTTL, No.J16X04776) | Jun-17 |
| Network Analyzer E5071C | MY46110673 | 26-Jan-16 (CTTL, No.J16X00894) | Jan -17 |

| | Name | Function | Signature |
|----------------|-------------|-----------------------------------|-----------|
| Calibrated by: | Yu Zongying | SAR Test Engineer | |
| Reviewed by: | Qi Dianyuan | SAR Project Leader | |
| Approved by: | Lu Bingsong | Deputy Director of the laboratory | |

Issued: November 18, 2016

This calibration certificate shall not be reproduced except in full without written approval of the laboratory.



Add: No.51 Xueyuan Road, Haidian District, Beijing, 100191, China
Tel: +86-10-62304633-2218 Fax: +86-10-62304633-2209
E-mail: cttl@chinattl.com [Http://www.chinattl.cn](http://www.chinattl.cn)

Glossary:

| | |
|-----------------------|---|
| TSL | tissue simulating liquid |
| NORM _{x,y,z} | sensitivity in free space |
| ConvF | sensitivity in TSL / NORM _{x,y,z} |
| DCP | diode compression point |
| CF | crest factor (1/duty_cycle) of the RF signal |
| A,B,C,D | modulation dependent linearization parameters |
| Polarization Φ | Φ rotation around probe axis |
| Polarization θ | θ rotation around an axis that is in the plane normal to probe axis (at measurement center), i $\theta=0$ is normal to probe axis |

Connector Angle information used in DASY system to align probe sensor X to the robot coordinate system

Calibration is Performed According to the Following Standards:

- IEEE Std 1528-2013, "IEEE Recommended Practice for Determining the Peak Spatial-Averaged Specific Absorption Rate (SAR) in the Human Head from Wireless Communications Devices: Measurement Techniques", June 2013
- IEC 62209-1, "Procedure to measure the Specific Absorption Rate (SAR) for hand-held devices used in close proximity to the ear (frequency range of 300MHz to 3GHz)", February 2005
- IEC 62209-2, "Procedure to determine the Specific Absorption Rate (SAR) for wireless communication devices used in close proximity to the human body (frequency range of 30 MHz to 6 GHz)", March 2010
- KDB 865664, "SAR Measurement Requirements for 100 MHz to 6 GHz"

Methods Applied and Interpretation of Parameters:

- NORM_{x,y,z}:** Assessed for E-field polarization $\theta=0$ ($f \leq 900\text{MHz}$ in TEM-cell; $f > 1800\text{MHz}$: waveguide). NORM_{x,y,z} are only intermediate values, i.e., the uncertainties of NORM_{x,y,z} does not effect the E^2 -field uncertainty inside TSL (see below ConvF).
- NORM(f)_{x,y,z} = NORM_{x,y,z} * frequency_response** (see Frequency Response Chart). This linearization is implemented in DASY4 software versions later than 4.2. The uncertainty of the frequency response is included in the stated uncertainty of ConvF.
- DCP_{x,y,z}:** DCP are numerical linearization parameters assessed based on the data of power sweep (no uncertainty required). DCP does not depend on frequency nor media.
- PAR:** PAR is the Peak to Average Ratio that is not calibrated but determined based on the signal characteristics.
- A_{x,y,z}; B_{x,y,z}; C_{x,y,z}; VR_{x,y,z}:** A,B,C are numerical linearization parameters assessed based on the data of power sweep for specific modulation signal. The parameters do not depend on frequency nor media. VR is the maximum calibration range expressed in RMS voltage across the diode.
- ConvF and Boundary Effect Parameters:** Assessed in flat phantom using E-field (or Temperature Transfer Standard for $f \leq 800\text{MHz}$) and inside waveguide using analytical field distributions based on power measurements for $f > 800\text{MHz}$. The same setups are used for assessment of the parameters applied for boundary compensation (alpha, depth) of which typical uncertainty valued are given. These parameters are used in DASY4 software to improve probe accuracy close to the boundary. The sensitivity in TSL corresponds to NORM_{x,y,z} * ConvF whereby the uncertainty corresponds to that given for ConvF. A frequency dependent ConvF is used in DASY version 4.4 and higher which allows extending the validity from $\pm 50\text{MHz}$ to $\pm 100\text{MHz}$.
- Spherical isotropy (3D deviation from isotropy):** in a field of low gradients realized using a flat phantom exposed by a patch antenna.
- Sensor Offset:** The sensor offset corresponds to the offset of virtual measurement center from the probe tip (on probe axis). No tolerance required.
- Connector Angle:** The angle is assessed using the information gained by determining the NORM_x (no uncertainty required).