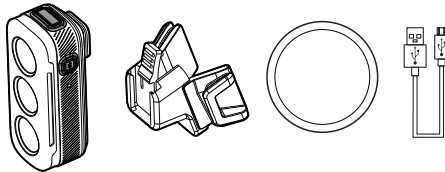


PRODUCT SPECIFICATION:

⚠ Attention

- Do not look directly at the light, including other road users, as this product emits an extremely powerful beam and can therefore lead to dangerous conditions. Please be careful when operate.
- Be sure to direct the beam down so that users approaching the road are not dazzled.
- Do not use premium mode on public roads.
- Before using, please ensure that the light is firmly installed on the bracket, that the light can be lit, and that the light will not be affected by the luggage and so on.
- Keep it out of reach of children.
- Carry a spare light or battery pack with you at all times, as the light can fail unexpectedly at any time.
- This product is IPX6 waterproof under normal use and can be used in the rain. However, do not intentionally submerge it in water.
- Please charge the battery before use, see the "How to Charge" instructions.

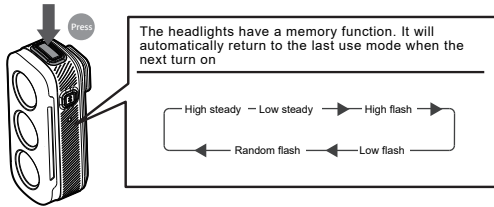
PACKING LIST



HEADLIGHT OPERATION

POWER BUTTON

1. **On/Off** : Long press the power button for 0.75 seconds.

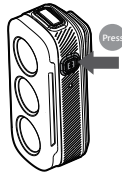


2. **Power Indicator**: In the shutdown state, click the power button, the power indicator shows the current power 3 seconds off.

3. **Lock mode**: In the shutdown, long press the power button for 5 seconds, then the power indicator red flash 3 times, enter the lock mode. During the lock mode, the power button is invalid. Bluetooth button is invalid.

4. **Unlock**: In lock mode, press and hold the power button for 5 seconds to unlock, and the power indicator will flash red for 3 times before turning to a low steady mode.

BLUETOOTH BUTTON



1. **Regiment riding function on/off**: When power on, long press the Bluetooth button for 0.75 seconds; After the regiment riding function is turned on, the blue light of the Bluetooth status indicator is steady on.

2. **Pairing mode**: Press and hold the Bluetooth button for 2 seconds to enter the search pairing mode, the blue light will flash quickly. If the match is successful, the purple light will be on. If the search fails constantly, the matching mode will exit after 30 seconds;

3. **Regiment riding mode**: When the equipment turns on the regiment riding function, the same series of equipment will automatically enter the regiment riding mode when it is near, and the taillights will turn to 5 lumens (the regiment riding distance is about 30 meters).

4. **ANT+ computer connection**: vibrate the equipment, the backstage automatically open ANT+. Computer can search for the device. After connecting the computer, you can control the device mode and switch on the computer.

WORKING TIME AND LUMENS

ANSI	High steady	Low steady	High flash	Low flash	Random flash	Regiment riding Mode (Steady)
	150 LUMENS	50 LUMENS	300 LUMENS	30 LUMENS	20 LUMENS	5 LUMENS
	03:00 h:min	08:00 h:min	09:00 h:min	44:00 h:min	44:00 h:min	49:00 h:min

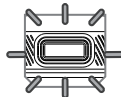
BATTERY INDICATOR

Green Light Constantly: 100%-70%

Yellow Light Constantly: 70%-40%

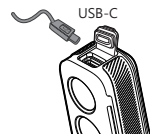
Red Light Constantly: 40%-10%

Red Light flashing represented 10%-1%, will enter low power mode (5 lumens Low flash).



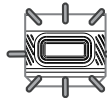
HOW TO CHARGE

Please charge before using

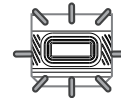


CHARGING TIME

Estimated 2.5hrs

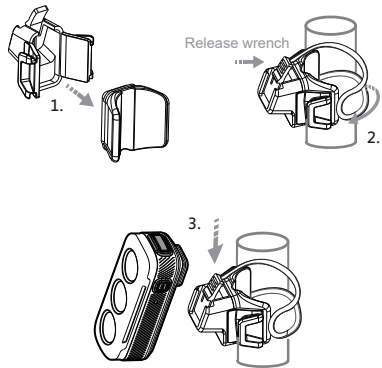


Charging time



Fully Charged

INSTALLATION



FCC WARNING:

This device complies with part 15 of the FCC Rules. Operation is subject to the following two conditions: (1) this device may not cause harmful interference, and (2) this device must accept any interference received, including interference that may cause undesired operation.

Any changes or modifications not expressly approved by the party responsible for compliance could void the user's authority to operate the equipment.

NOTE: This equipment has been tested and found to comply with the limits for a Class B digital device, pursuant to Part 15 of the FCC Rules. These limits are designed to provide reasonable protection against harmful interference in a residential installation. This equipment generates, uses and can radiate radio frequency energy and, if not installed and used in accordance with the instructions, may cause harmful interference to radio communications. However, there is no guarantee that interference will not occur in a particular installation. If this equipment does cause harmful interference to radio or television reception, which can be determined by turning the equipment off and on, the user is encouraged to try to correct the interference by one or more of the following measures:

- Reorient or relocate the receiving antenna.
- Increase the separation between the equipment and receiver.
- Connect the equipment into an outlet on a circuit different from that to which the receiver is connected.
- Consult the dealer or an experienced radio/TV technician for help.

To maintain compliance with FCC's RF Exposure guidelines, This equipment should be installed and operated with minimum 20cm distance between the radiator and your body: Use only the supplied antenna.