



Mobile Video Telematics MVT100 Installation Guide

- High Quality 2Mega pixel CMOS Camera
- Normal and Event Recording with Audio
- 3axis G-Sensor Detecting
- High Performance GPS Tracking
- OLED Display for Status Information
- Emergency Touch Button
- Supports Various Mobile Communication
- Uploading Video and Snapshot
- Digital External Device Input
- Special Client Viewer S/W

Components

Thanks for choosing our product.

Before using, check the components of product which are properly included as shown below.



MVT100



Installation Guide



SD Memory Card



Bracket Holder



Cigar Jack Cable



Cable Holder



Antenna
(included only for network type)

- * The specification of the components may be changed without prior notice in order to enhance the function or quality of the product.
- * Charging Lithium Ion Polymer Battery is included.
- * In case of Network type, the back office server system must be needed.
So, please ask to your local distributor for Usage including USIM card.

Warranty Service Notice

Dear Customers,

1. Mlogsee, MVT100 warranty is 1year limited after purchase the product.
2. For details of coverage, please check to your local distributors.
3. The original manufactures warranty starts from the date of warranty registration at the time of delivery.
4. To keep the warranty valid the product must be properly maintained and serviced according to recommend service intervals. Abuse and neglect can void this warranty.

Responsibility Scope

We shall not be responsible for the damages caused by errors or data loss of this product, plus the damages while product is being operated by a user.

This product is designed to record, store, transmit, play and analyze, the video and other data incurred by impacts and car accidents.

The video can be also recorded even at user's discretion.

However, it is not assured to record and transmit all video in a specific environment or operation situation.

Product Overview

MVT100 is a driver recorder called EDR for commercial, government and private vehicles.

A user can check various data such as a driver's location, speed, driving behaviors, audio, picture and video, and also a fleet manager can get such as the data via various mobile network for real-time monitoring.

MVT100 provides the management back office solution for Eco-Driving needs and, 3kinds of major key tracking services such as GPS location, Video and Event.

*Please, ask to your local distributor for the back office solution service.

Product Specification

CONTENTS		SPECIFICATION	STD	LUX	NET
Camera	Digital	2Mega CMOS(*1)	Diagonal 122.8° Lens		
Recording	Encrypted MPEG4	QVGA / VGA : 5 / 15 / 30 fps (default VGA-5fps)	O	O	O
	Event	Max. Pre-20sec / Post 25sec at QVGA (default 10sec-5sec at VGA)	O	O	O
	Normal	Supports Normal Recording File	O	O	O
Audio	ADPCM	Supports Audio Recording (default ON by S/W setting)	O	O	O
Event List(*2)	Shock	Built-in G-Sensor (default level 3)	O	O	O
	Emergency	Built-in Touch Button	O	O	O
	Speed	When Speed over during 1mintue by setting speed value	O	O	O
	External Device	When get input signal from External devices (supports Max. 3devices)	X	X	O
Data Storage	SD	SD Memory Card (*3)	2GB	4GB	4GB
GPS	Commercial	European GPS	O	O	O
Display	OLED	Time, Event List, SD Capacitor, GPS Detection Rate, Recording Mode	X	O	O
Network	Mobile(*4)	UMTS/HSDPA 850/1900/2100MHz GSM/GPRS/EDGE 850/900/1900/2100MHz	X	X	O
Power	by Cigar Jack Cable	Length 5m, Input DC 9V ~ 27V only	O	O	O
Battery(*5)	Lithium Ion Polymer	Support to record and transmit a last data safely, When the Power sudden shut down during recording and transmitting Event and Support RTC time.	370mAh		
Accessory	Bracket Holder, Cable Holder (6pcs)		O	O	O
Dimension	(W)idth x (D)epth x (H)eight (except of Stand Bracket)		140 x 70 x 30mm		
Temperature	Operating -25℃~ +75℃ / Storage -45℃~85℃ Relative Humidity 5%~95% noncondensing				

※ Remarks

1. Wider angle lens type is available.
2. The event list can be uploaded. (available only network type)
3. SD memory card must be applied by recommended type.
4. To use SIM card for data communication with server, please ask to your local distributors.
And this mobile network is to support only data upload and download and is not support voice call.
5. Life Cycle of Battery is for 12months.

Name of the parts



Installation

Cautions when install

For smooth capture of images and GPS signals, this device must be attached on the front glass of vehicle beneath room mirror to the forward direction.

When the bracket holder of MVT100 is attached on the glass, you have to fix it as shown in the figure below.

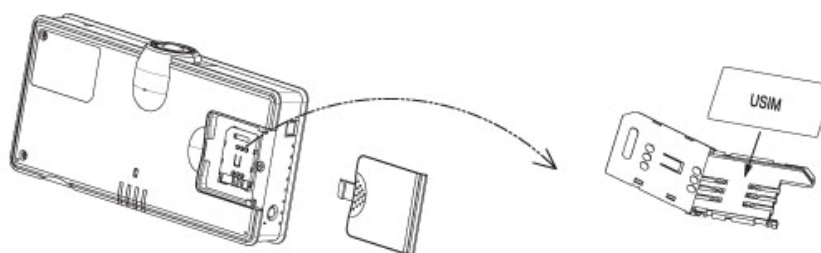
When there is dark tinting on the front glass, when the navigation and other devices are installed too close to the device, or when wrong placed substance is on the device, they may have bad effects on the capture of images and GPS signals.

USIM and Antenna installation

Before install this product to the vehicle, in case of **network** type, USIM and Antenna must be installed as shown below. The network type must use the back office server solution and ask to your local distributor including the data plan for your usage.

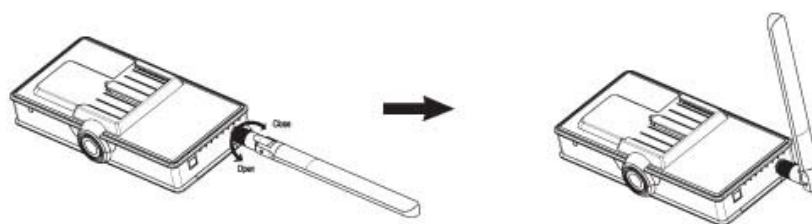
①

USIM Card Installation



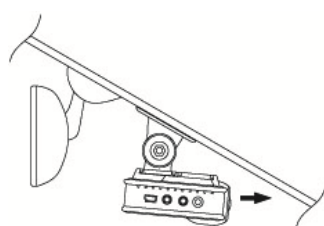
②

Antenna Installation

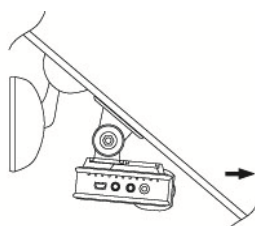


Mounting Place according to each car type

As the angle of front glass according the kinds of car must be different, please install it as shown below.



Sedan/Coupe



SUV/RV



Bus/Truck

In-Car Installation

The device is installed on the front glass of vehicle beneath the room mirror to the forward direction and should be installed in a horizontally balanced way without any declining to right or left direction.

- ① Wash off the area with dry cloths to remove foreign substance, where the MVT terminal will be located.

***On the wet surface, it can be easily detached.**

- ② According to the car's installation condition, the bracket holder will be installed at the front or rear side of the set.



Or



- ③ After loosening the screw of the fixed handle to turn it at proper angle, screw it up again.



- ④ Remove the protective film attached on beneath the bracket holder.



- ⑤ After washing off the area beneath the room mirror of the center of the front glass, attach the bracket holder.



- ⑥ After fixing the terminal on the attached bracket holder, connect the jack of opposite side to the DC power supply inlet.



- ⑦ Cigar Jack Cable should not be seen through the front glass fringes.
(In certain cases, the enclosed adhesive cable holder can be used for that purpose.)



- ⑧ Connect the cigar jack cable to the cigar jack socket of the vehicle.

* Input power: DC12V or 24V



- ⑨ Put the provided SD card to the SD card slot. Upon starting the car, LED-ON and BEEP will appear and data recording are started.

*** Please don't eject the SD memory card to SD slot when the cigar jack cable is connecting to the cigar jack socket of the vehicle.**



- ⑩ Installation is completed.



*** Although the power is off, it will keep to record continuously for the time according to The battery charging status.**

*** In order to use the storage media (SD memory card) safely, initialization is needed 2 - 3 times per a month.**

Logseer S/W

LOGSEER Program

This is a special client viewer program in your PC to identify the data for prevention of forgery or alteration stored in the SD memory card such as images (including audio), shock sensor, location information (link with internet map) and others.

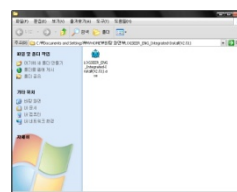


★ It is recommended to use LOGSEER program in the window XP / Vista / 7. ★

LOGSEER Installation

① Double click the Logseer.exe file to install to your PC.

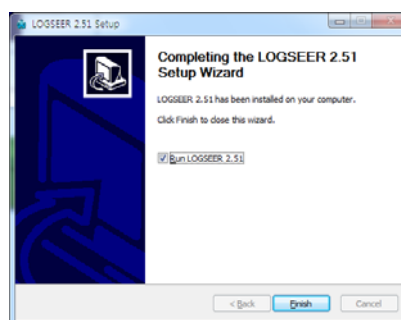
② This program is included in the enclosed SD memory card or ask to your local distributor.



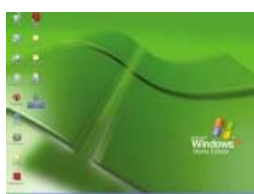
② Upon appearing the Setup Wizard on the screen, click the button <Install>.



③ After completing, click the button <Finish>.



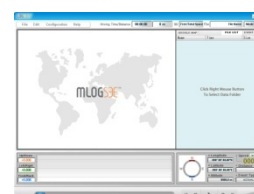
④ You will see icon 'Logseer' on the screen.



⑤ When needed upgrading, it is executed automatically. (required the internet environment).



⑥ Once you double-click the icon, main screen is executed.



How to use Network Type

To use network type, the device configuration file must be downloaded from the back office server system and save it to SD memory card of device.





This kind of configuration file can be treated by only feet manager or local distributor who is managing physical server system.

When the power-on after insert SD memory card to the device, the device will find the back office server system such as dedicated IP address and upload various event data through local carrier provider mobile data service.

For more detail information, please ask to your local distributor.

Certification and Compliance

See MVT100 for the certification and compliance marks specific to that device.

MVT100 (STD and LUX type)	 F690501 / SP-RTL000547  F690501 / RF-EMY005249  10R-024996
MVT100 (NET type)	 FCC ID: ZKR-MVT100NET

FCC Information

The Federal Communications Commission Radio Frequency Interference Statement includes the following warning:

NOTE: This equipment has been tested and found to comply with the limits for a Class B digital device, pursuant to Part 15 of the FCC Rules. These limits are designed to provide reasonable protection against harmful interference in a residential installation.

This equipment generates, uses, and can radiate radio frequency energy and, if not installed and used in accordance with the instructions, may cause harmful interference to radio communications. However, there is no guarantee that interference will not occur in a particular installation. If this equipment does cause harmful interference to radio or television reception, which can be determined by turning the equipment off and on, the user is encouraged to try to correct the interference by one or more of the following measures:

- Reorient or relocate the receiving antenna.
- Increase the separation between the equipment and receiver.
- Connect the equipment into an outlet on a circuit different from that to which the receiver is connected.
- Consult the dealer or an experienced radio/TV technician for help.

This device complies with part 15 of the FCC Rules.

Operation is subject to the following two conditions: (1) This device may not cause harmful interference, and (2) this device must accept any interference received, including interference that may cause undesired operation.

Caution : Any changes or modifications in construction of this device which are not expressly approved by the party responsible for compliance could void the user's authority to operate the equipment.

IMPORTANT NOTE:

FCC Radiation Exposure Statement

This equipment complies with FCC radiation exposure limits set forth an uncontrolled environment.

This equipment should be installed and operated with minimum distance 20cm between the radiator and your body.

This transmitter must not be co-located or operating in conjunction with any other antenna or transmitter.