



Mobile Video Telematics

# MVT100 Installation Guide



High Definition 2M Pixels CMOS Camera



OLED Display for Status Information



Support Normal and Event Recording



High Performance European GPS



Special Viewer supported



Support Various Mobile Communication

# Components

Thank you for choosing our product.

Before using, check the components of product which are properly included.



MVT100 Terminal



Installation Guide



Bracket Holder



Cigar Jack Cable



SD Memory Card



Cable Holder

- \* The specification of the components may be changed without prior notice in order to enhance the product function or quality.
- \* Lithium polymer battery is used.  
Before use, you have to fully understand the battery-related guidelines on the user manual.

## Warranty Service Notice

Dear Customers,

1. The MLOGSEE Mobile Video Telematics warranty is 1year limited after purchase it.
2. For details of coverage, Please check with User's manual with your local distributors.
3. The original manufactures warranty starts from the date of warranty registration at the time of delivery.
4. To keep the warranty valid the terminal must be properly maintained and serviced according to recommend service intervals. Abuse and neglect can void this warranty

# Name of the Parts



## Camera Lens

High-definition 2-megapixel CMOS camera  
Wide angle lens support.



## OLED Display

SD memory, GPS receiver sensitivity,  
Event type is displayed.

## Operation indicator (LED)

Shows the operating status of the device.

## Mounting an SD card slot

Store video and audio data, and  
To facilitate mobility.



## External input device port

If you use an event from an external device  
Is used to apply the specially designed cable  
Must.

## Power input

Usually (car's battery power), and cigarette lighter  
power DC 9V ~ 27V are supported.



## Vent

The heat is released inside to outside.

## Antenna hole

Will be used during mobile use.

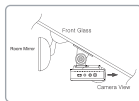
# Installation

## Cautions when install

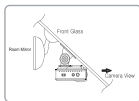
- For smooth capture of images and GPS signals, this terminal must be attached on the front glass of automobile beneath room mirror to the forward direction.
- When the bracket holder of MVT terminal is attached on the glass, you have to fix it as shown in the figure below.
- When there is dark tinting on the front glass, when the navigation and other devices is installed too close to the terminal, or when wrong placed substance is on the terminal, they may have bad effects on the capture of images and GPS signals.

## Mounting Place according to each car type

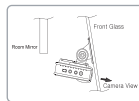
Since the angle of front glass according the kinds of car must be different, please install it as shown below.



Sedan/Coupe



SUV/RV



Bus/Truck

## In-Car Installation

The terminal is installed on the front glass of automobile beneath the room mirror to the forward direction.

The terminal should be installed in a horizontally balanced way without any declining to right or left direction

- 1 Wash off the area with dry cloths to remove foreign substance, where the MVT terminal will be located.  
**\* On the wet surface, it can be easily detached.**
- 2 According to the car's installation condition, the bracket holder will be installed at the front or rear side of the set.



or



- 3 After loosening the screw of the fixed handle to turn it at proper angle, screw it up again.



- 4 Remove the protective film attached on beneath the bracket holder.



- 5 After washing off the area beneath the room mirror of the center of the front glass, attach the bracket holder.



- 6 After fixing the terminal on the attached bracket holder, connect the jack of opposite side to the DC power supply inlet.



- 7 Cigar Jack Cable should not be seen through the front glass fringes.  
(In certain cases, the enclosed adhesive cable holder can be used for that purpose.)



- 8 Connect the cigar jack cable to the cigar jack of the automobile.

**\* Input power : DC9V-27V**

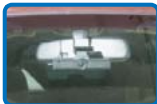


- 9 Put the provided SD card to the SD card slot.  
Upon starting the car, LED-ON and BEEP will appear and data recording are started.

**\* Please attach/detach the SD memory card only when the power is off.**



- 10 Installation is completed.



**\* Although the power is off, it will keep to record continuously for the time according to the battery charging status.**

**\* In order to use the storage media (SD memory card) safely, initialization is needed 2 - 3 times per a month.**

# Installation Logseer S/W

## LOGSEER Program

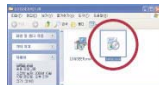
This is a special viewer program to identify the data for prevention of forgery or alteration stored in the SD memory card, images (including audio), shock sensor, location information (link with internet map) and others.



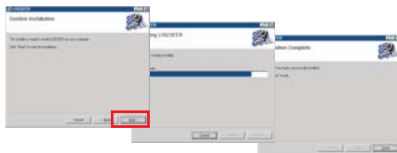
It is recommended to use LOGSEER program in the window XP / Vista / 7.

## LOGSEER Set-up

- 1 Double click the Setup.exe file to start installation process.  
The setup program is included in the enclosed SD memory card along with the user manual. Also, you can directly download the program from our web site.
- 2 Upon appearing the Setup Wizard on the screen, click the button <Next(N)>.
- 3 After selecting the installation folder, click the button <Next(N)>.



- 4 After finish the installation, click the button <Close(C)>



- 5 You will see icon 'LOGSEER' on the screen
- 6 When needed upgrading, it is executed automatically. (required the internet environment).
- 7 Once you double-click the icon, main screen is executed.



• Please, refer to user's manual for more detail information.

# Warranty service and responsibility scope

We shall not be responsible for the damages caused by errors or data loss of this product, plus the damages while this product is being operated by a user.

This product is designed to record, store, transmit, play and analyze, the video and other data incurred by impacts

and car accidents. Video can be also recorded even at user's discretion.

However, it is not assured to record all video in a specific environment or operation situation.

## MVT100 Product Specification

CONTENTS		SPECIFICATION	TYPE		
			STD	LUX	NET
Camera(*1)	Digital	2Mega Pixel, CMOS	O	O	O
Recording	Encrypted MPEG4	QVGA or VGA : 5 / 15 / 30 fps (default VGA-5fps)	O	O	O
	Event	Max. Pre-20sec / Post 25sec at QVGA (default 10sec-5sec, at VGA)	O	O	O
	Normal	Supports Normal Recording File	O	O	O
Audio	ADPCM	Supports Audio Recording (default ON)	O	O	O
Event List	Shock	3D G-Sensor (default level 3)	O	O	O
	Emergency	Built-in Touch Button	O	O	O
	Speed	When happen Speed over during 1min by setting speed value	O	O	O
	External Device	When get Input signal from External devices (supports Max. 3devices)	X	X	O
Data Storage	SD Memory Card(*2)	Supports up to 32GB	2GB	4GB	4GB
GPS	Commercial	European GPS Module	O	O	O
Display	OLED	Display Time, Event List, SD Capacitor, Recording Mode and etc.	X	O	O
Network	Mobile(*4)	UMTS/HSDPA 850/1900/2100MHz GSM/GPRS/EDGE 850/900/1900/2100MHz	X	X	X
Power	Cigar Jack Cable	Input DC 12V or 24V only	O	O	O
Battery(*3)	Lithium Ion Polymer	Supports to record data safely, When Main Power shut down during recording Event data and Support RTC time.	370mAh	←	←
Accessory	Stand Bracket, Cable Holder (6pcs)		O	O	O
Dimension	140 x 70 x 30mm (except of Stand Bracket)				
Temperature	Operating -25°C~75°C / Storage -45°C~85°C / Relative Humidity 5%~95% noncondensing				

Remarks;

\*1. Wider angle lens type is available.

\*2. SD memory card must be applied by recommended type.

\*3. Life cycle of Battery is for 12months.

## ***FCC Information***

The Federal Communications Commission Radio Frequency Interference Statement includes the following warning:

NOTE: This equipment has been tested and found to comply with the limits for a Class B digital device, pursuant to Part 15 of the FCC Rules. These limits are designed to provide reasonable protection against harmful interference in a residential installation.

This equipment generates, uses, and can radiate radio frequency energy and, if not installed and used in accordance with the instructions, may cause harmful interference to radio communications. However, there is no guarantee that interference will not occur in a particular installation.

If this equipment does cause harmful interference to radio or television reception, which can be determined by turning the equipment off and on, the user is encouraged to try to correct the interference by one or more of the following measures:

- Reorient or relocate the receiving antenna.
- Increase the separation between the equipment and receiver.
- Connect the equipment into an outlet on a circuit different from that to which the receiver is connected.
- Consult the dealer or an experienced radio/TV technician for help.

This device complies with part 15 of the FCC Rules.

Operation is subject to the following two conditions: (1) This device may not cause harmful interference, and (2) this device must accept any interference received, including interference that may cause undesired operation.

Caution : Any changes or modifications in construction of this device which are not expressly approved by the party responsible for compliance could void the user's authority to operate the equipment.

## ***IMPORTANT NOTE:***

### ***FCC Radiation Exposure Statement***

This equipment complies with FCC radiation exposure limits set forth in an uncontrolled environment. This equipment should be installed and operated with minimum distance 20cm between the radiator and your body.

This transmitter must not be co-located or operating in conjunction with any other antenna or transmitter.



**mLOGSÆ™**  
[www.mlogsee.com](http://www.mlogsee.com)

**MLOGSEE, INC.**

Doosan Venture Digm #522, Dongan-gu Pyeongchon-dong  
Anyang-city Gyeonggi-do, 431-070, Korea

Tel.+82-31-478-0620 / Fax.+82-31-478-0621