

Tune Up Procedure

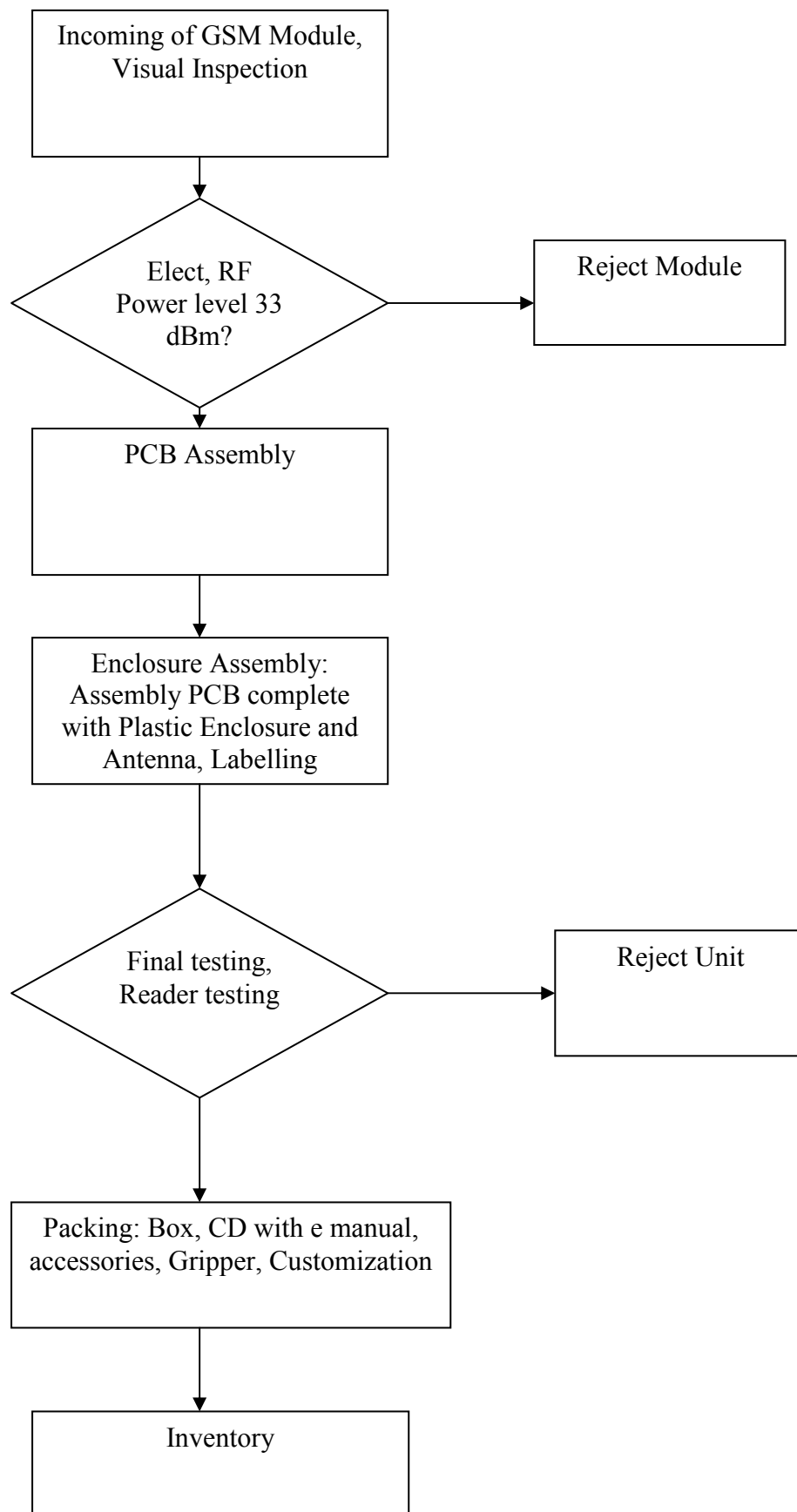
STM-8800 is designed without the need of user tuning or tune up.

STM-8800 is built using all preset GSM Module.

All GSM Module used to build STM-8800 are tuned to the same Power level at 33 dBm and it is programmed as default value. Units that cannot be tuned to this value is rejected and not used to build STM-8800 unit. Unit is checked for this Power Level at factory.

All the preset value is stored into GSM Module EEPROM memory and the settings for each unit may differ but the power output for all units is fixed to the same Power Level i.e. 33 dBm.

Unit can also be set to operate different regional Operating Frequency i.e. Europe and North America. As for Europe, the operating Frequency is 880 MHz – 915 MHz and for North America, the operating Frequency is 824.2 MHz – 848.8 MHz and 1850.2 MHz – 1909.8MHz.



Incoming

The incoming materials such as GSM Modules are fully inspected for any defects.

Electrical and RF tests

The GSM Modules are fully tested and ensure all units are already calibrated to 33 dBm power Level. Units that are not calibrated to 33 dBm or low power levels are rejected.

PCB Assembly

The PCB is SMT mounted with all radio modules.

Enclosure Assembly

The PCB unit is then mounted with Antenna, 4 screws are used to mount the PCB to the back plastic enclosure and the front enclosure is then latched into the back enclosure.

Front Label is pasted on the front enclosure. Front label indicate unit is power ON, charging etc. Back Label is then pasted on the back which is an FCC label which also gives our support website <http://www.wjholdings.co.kr/>

Final Testing

Unit is then 100% functionally tested.

Unit must be able to read from RFID tags.

Unit also must be fully able to connect to GSM test station.

Packing and Customization

Unit is then pack into box with CD that have electronic copy of user manual.

Stage/Inventory

STM-8800 is ready to be shipped.



3F. Kukdong Bldg., Chungmuro 3-ga, Jung-gu, Seoul,
Korea

Tel No : +82-2-2075-9370

Fax No : +82-2-2075-1098

TUNE-UP PROCEDURE

Applicant : Woongjin Holdings Co., Ltd.

FCC ID : ZK9STM-8800

Model : STM-8800

Kind of Product : Industrial PDA

There are no user accessible adjustments or tuning in this Industrial PDA. All necessary adjustments and tuning are performed during manufacture of the product. Any adjustments or tuning after service or repair are done as part of that process as special equipment is required to perform such adjustments.

Sincerely,

Y. T. Lee

Lee Young-taek - Engineer

CTK Co., Ltd.

cc. Hyong-Ju Kim / Woongjin Holdings Co., Ltd.