

Edge Computing Box

APC3588

User' s Guide V1.0

FCC Warning

This device complies with part 15 of the FCC rules. Operation is subject to the following two conditions: (1) this device may not cause harmful interference, and (2) this device must accept any interference received, including interference that may cause undesired operation.

Changes or modifications not expressly approved by the party responsible for compliance could void the user's authority to operate the equipment.

NOTE: This equipment has been tested and found to comply with the limits for a Class B digital device, pursuant to part 15 of the FCC Rules. These limits are designed to provide reasonable protection against harmful interference in a residential installation. This equipment generates uses and can radiate radio frequency energy and, if not installed and used in accordance with the instructions, may cause harmful interference to radio communications. However, there is no guarantee that interference will not occur in a particular installation. If this equipment does cause harmful interference to radio or television reception, which can be determined by turning the equipment off and on, the user is encouraged to try to correct the interference by one or more of the following measures:

- Reorient or relocate the receiving antenna.
- Increase the separation between the equipment and receiver.
- Connect the equipment into an outlet on a circuit different from that to which the receiver is connected.
- Consult the dealer or an experienced radio/TV technician for help.

The users manual or instruction manual for an intentional or unintentional radiator shall caution the user that changes or modifications not expressly approved by the party responsible for compliance could void the user's authority to operate the equipment

Radiation Exposure Statement

This equipment complies with FCC radiation exposure limits set forth for an uncontrolled environment. This equipment should be installed and operated with minimum distance 20cm between the radiator and your body.

Version History

| Time | Version | Purpose | Author | Comment |
|------------|---------|-----------|--------|---------|
| 2024.12.06 | 1.0 | establish | | |
| | | | | |

Catalogs

| | |
|--|-----------|
| 1.Product Features | 1 |
| 3.Setup Connection | 3 |
| 4.Settings | 4 |
| 5.WIFI | 4 |
| 6.Bluetooth | 6 |
| 7.HDMI | 7 |
| 8.Type-C DP | 8 |
| 9.USB2.0/3.0 | 9 |
| 10.RJ45 Port Verification | 10 |
| 11.TFcard | 11 |
| 12.SIM card | 12 |

1.Product Features

- (I) Support 32 channels 1080P 30FPS, support 8K video editing and decoding.
- (II) Supports LPDDR up to 32GB and EMMC up to 512GB.
- (III) Supports HDMI IN video input and USB camera combination.
- (IV) Support Dual HDMI Output and DP Out(Through Type-C).
- (V) Support TYPE-C/USB3.0/USB2.0/GPIO/CAN/RS485/RS232/TTL peripheral interfaces.
- (VI) Support M.2/SATA3.0/ GTIOT/SPI/ I2C/UART/USB2.0 and other internal expansion
- (VII) Support Dual Gigabit wired network port with optional POE power supply, and at the same time can support 2.4G/5G dual-band wifi and Bluetooth.
- (VIII) Support multiple operating systems: Android13 & Debian11 & Ubuntu
- (IX) Built-in watchdog and RTC battery can support 7*24 hours stable operation.
- (X) Support 4G/5G LTE/Zigbee communication module (optional).

2.external interface



3.Setup Connection

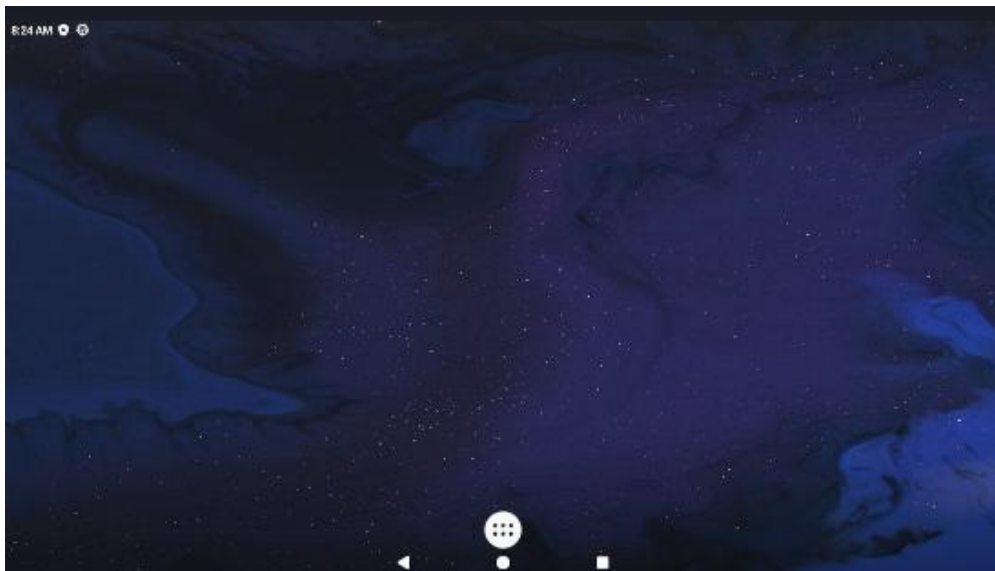
Place APC3588 on a flat platform near the computer, and make sure nothing block the remote control signal. Power on automatically and go to homepage

Display when Power Up

After powering on, the screen displays software version information.



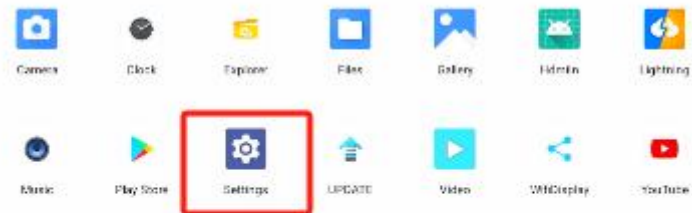
Home Screen display.



4.Settings



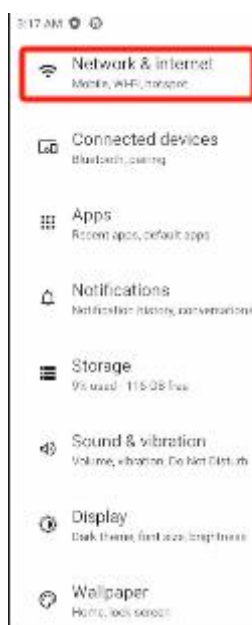
Click on the icon, Go to the Features home page and find the Settings bar



5.WIFI

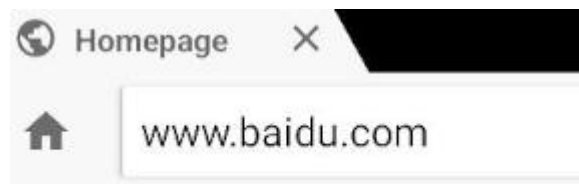
Click on Settings and go to Network & internet

Connect to the network and verify that the network is available , Input WWW.baidu.com, the network is working normally



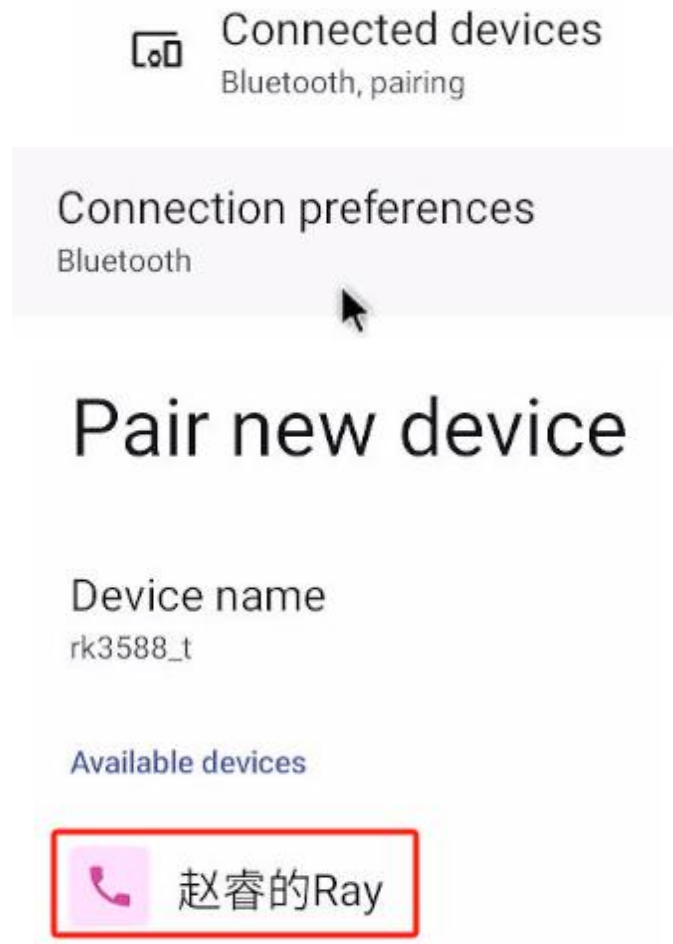
Network & internet





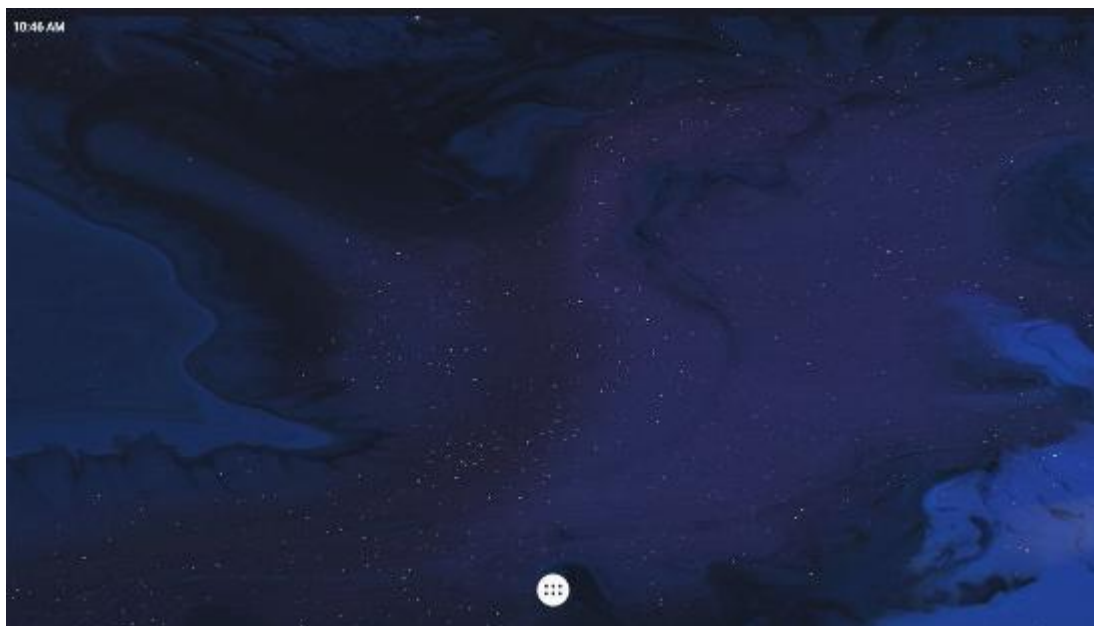
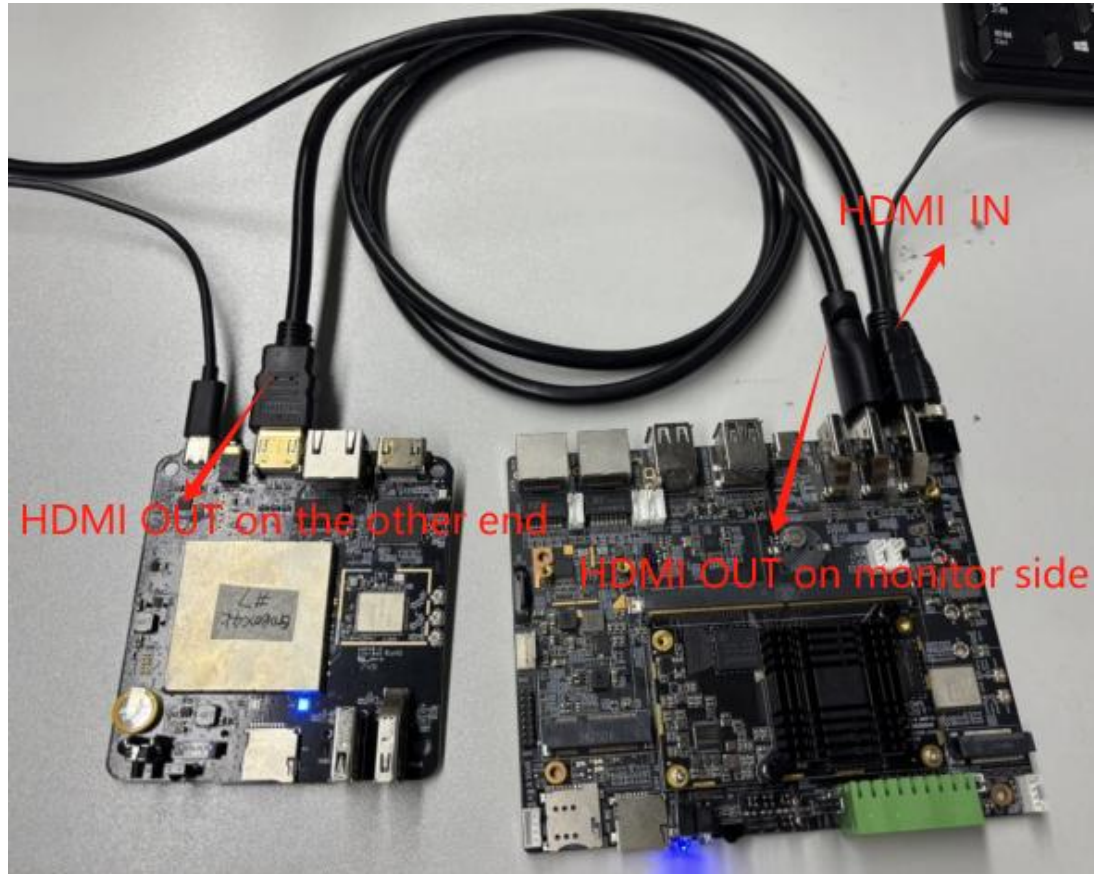
6. Bluetooth

Click Connected devices, open the Bluetooth, complete the match, open the cell phone for file transfer, verify that the Bluetooth can be used normally



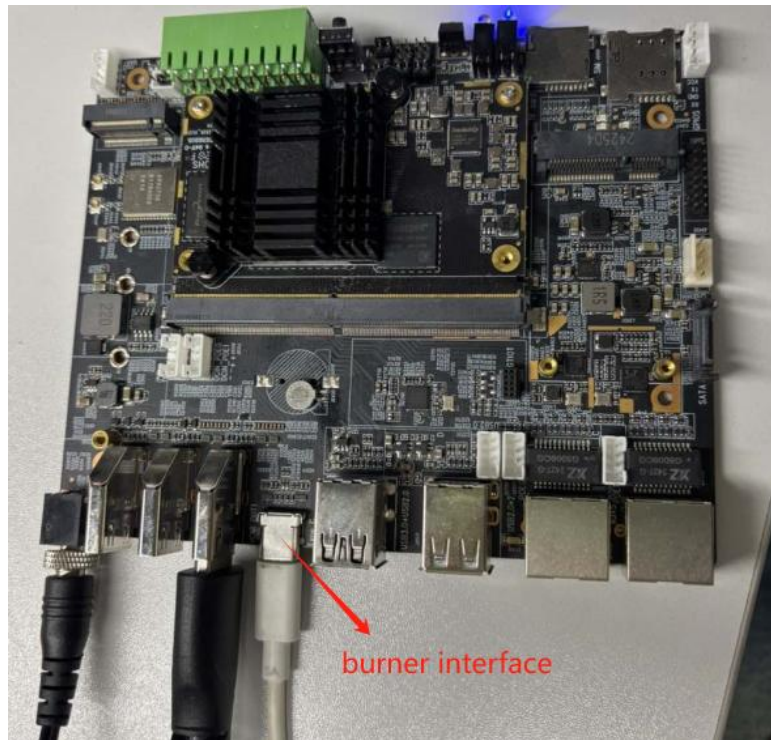
7.HDMI

Verify HDMI IN and HDMI OUT (OUT1) at the same time, access HDMI IN, connect the monitor end OUT screen casting, with the help of the other end of the OUT screen output, can receive the screen, HDMI normal use



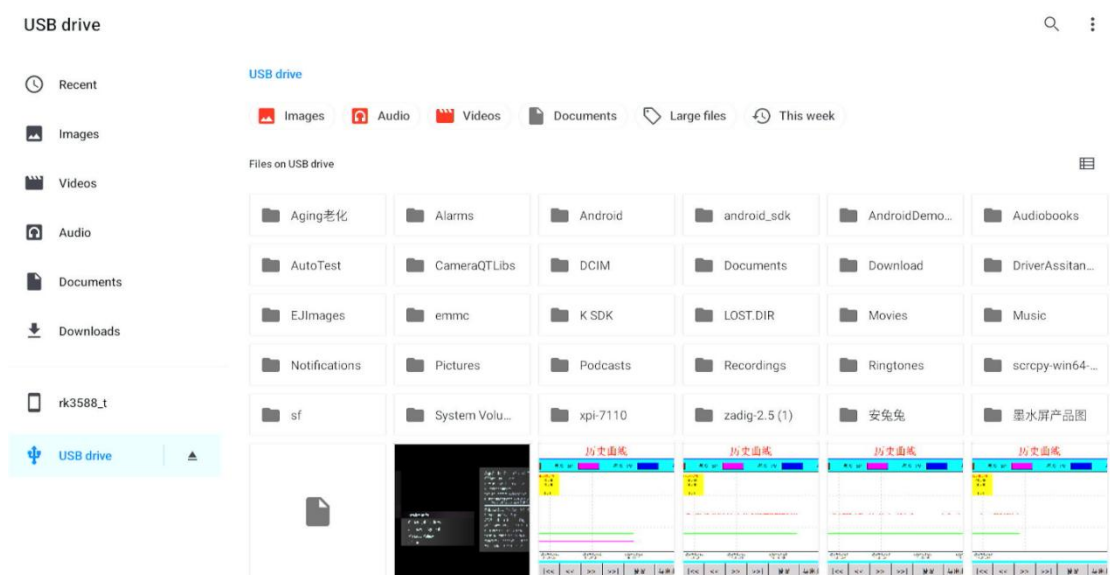
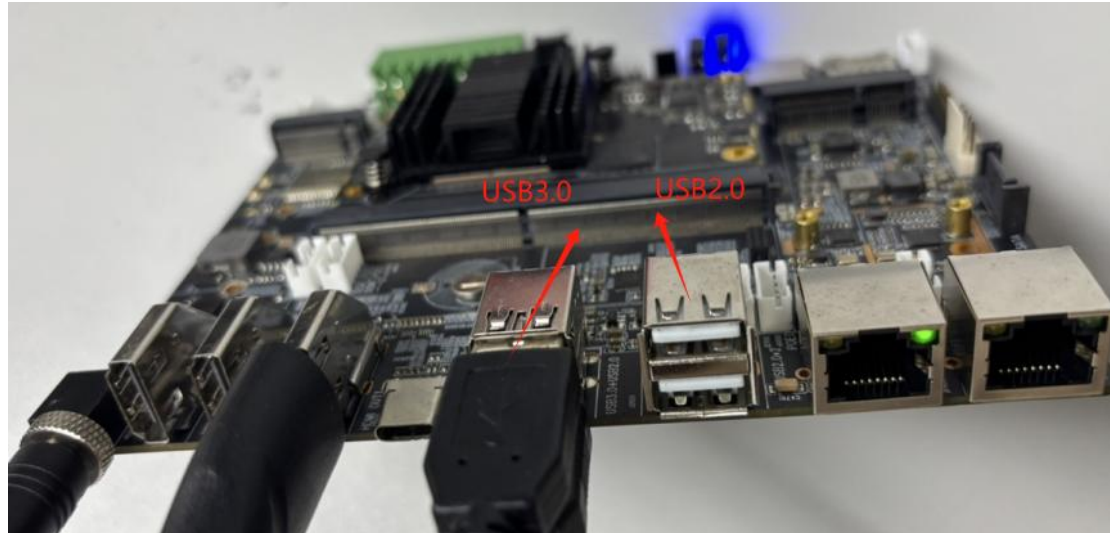
8.Type-C DP

Type-C burn-in interface, access Type-C while holding down the burn-in button, access the power supply, enter the burn-in interface



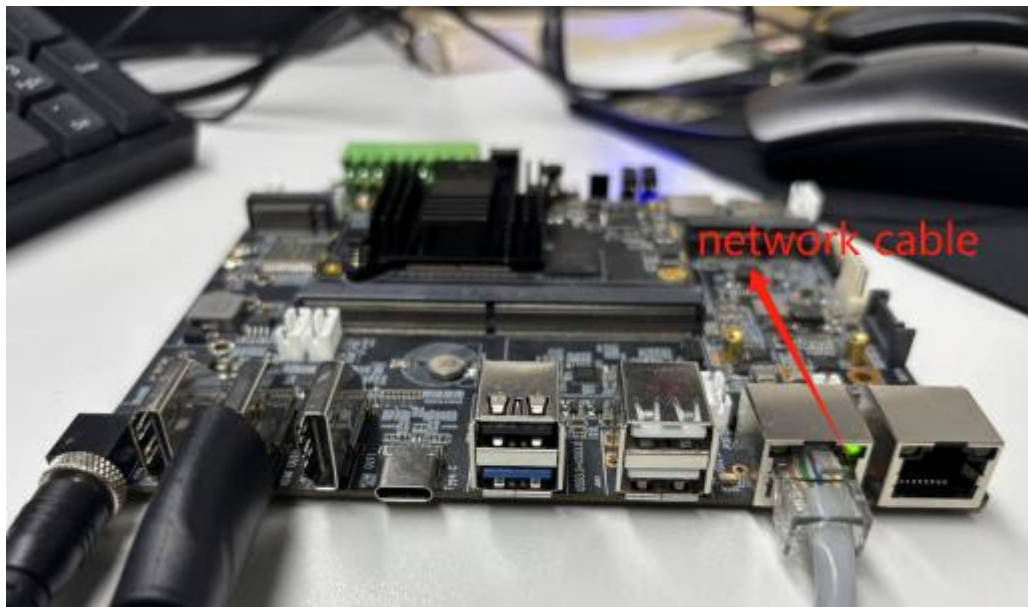
9.USB2.0/3.0

- 1.USB2.0, USB3.0 access to wired mouse and wired keyboard, mouse and keyboard can be used normally,
- 2.Access to the U disk automatically mounted, open the file, click on the U disk, USB interface normal use



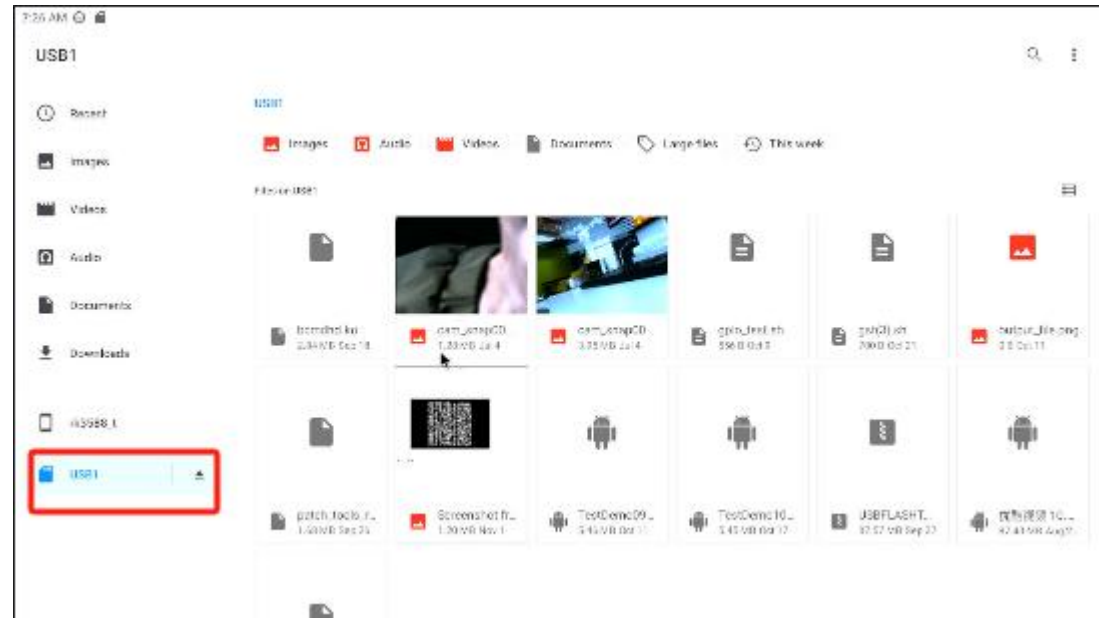
10.RJ45 Port Verification

RJ45 dual-network wired connection: connected to the network cable, the network port status display orange light blinking is Gigabit, 100 megabit is a green light, you can enter the browser through the system Lightning APP www.baidu.com network for normal use



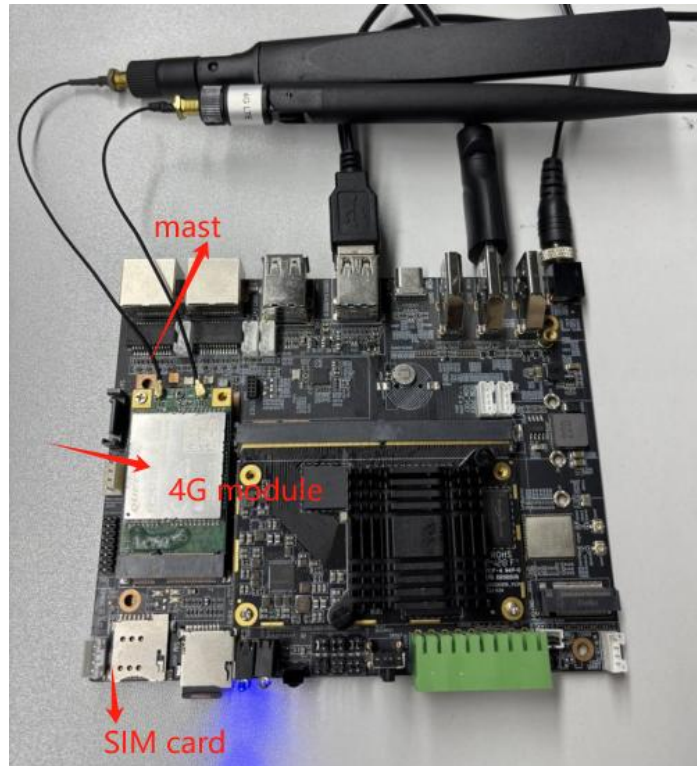
11.TFcard

Insert the TF card, automatic recognition, enter the home page, open Files, find the TF card storage, you can find the contents of the



12.SIM card

Connect the 4G module, install the antenna to ensure stable signal reception, insert the SIM card, go back to the home page, Click on Settings and go to Network & internet, you can check the internet status, the SIM card has been recognized, you can access the internet through the Lightning APP, enter www.baidu.com, to verify that the network is can be used normally



Network & internet



Internet
China Telecom