

INSTRUCTION MANUAL

R/C Devastator

Batteries Installation:

The operation requires 6pcs of AA size batteries for the car and one “9V” size batteries for the transmitter.

Remarks: this product has included 2pcs of AA size batteries for TRY ME function.

“TRY ME” Function:

- λ Press the red button showed in Diagram A.
- λ The car will be light up.

Diagram A

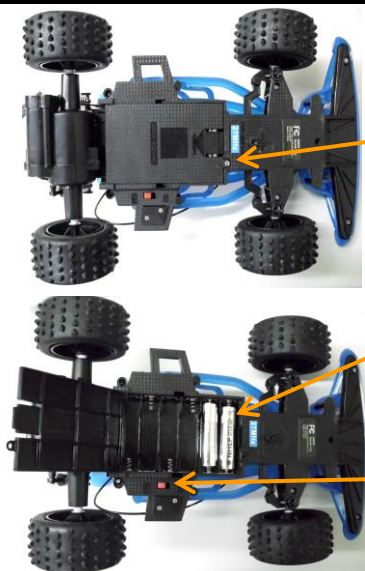


Press the red button, then the car will be light up.

Install batteries to the Car:

- λ Carefully remove product from package.
- λ Locate the battery compartment in the car body.
- λ Unlock and open the battery cover as in indicated in Diagram B - point 1.
- λ Remove the 2 existing AA batteries, then install the new 6 AA batteries in the car (Diagram B - point 2).
- λ Close the battery compartment door.
- λ Switch on the car (Diagram B - point 3).

Diagram B



1. Unscrew and press backward the battery cover to open it.

2. Remove the 2 existing AA batteries, then install the new 6 AA batteries in the car.

3. Switch on the car

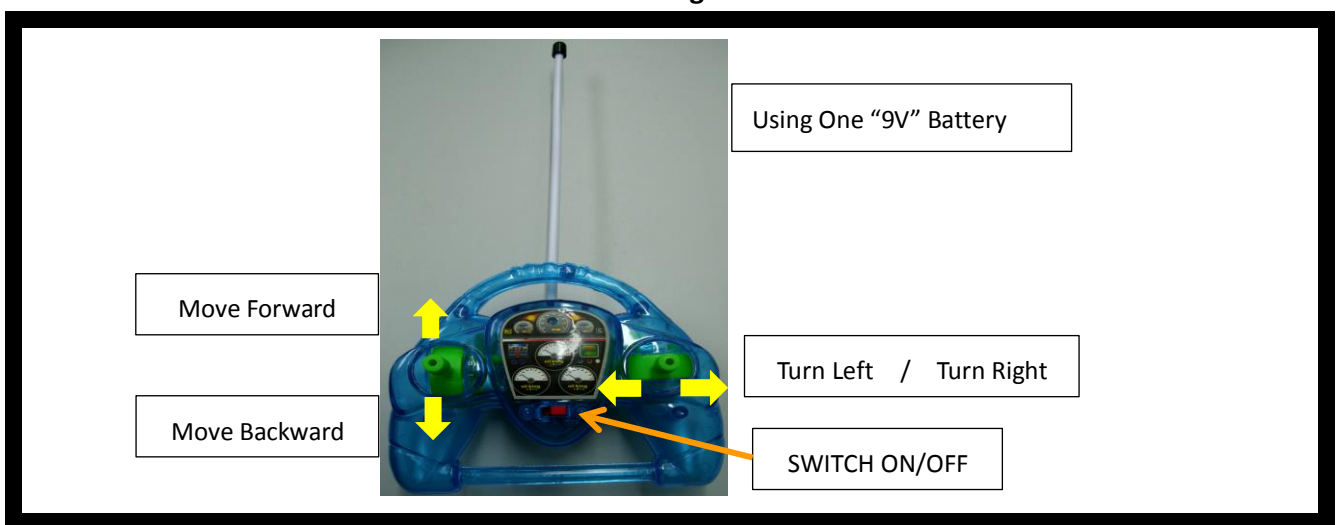
Install batteries to the transmitter:

- λ Unscrew the battery compartment door on the back of the transmitter.
- λ Slide out the door from the battery compartment.
- λ Insert 1 piece of “9V” size battery to the battery compartment according to the polarity direction as engraved inside.
- λ Close the battery compartment door by the screw.

Running the R/C Car:

- λ Step 1 : Install the batteries on both the car and transmitter as mentioned above.
- λ Step 2 : Turn on the switch on the car. The switch is located at the base of the car as illustrated in Diagram B.
- λ Step 3: Turn on the switch on the transmitter. The switch is located at the bottom of transmitter as illustrated in Diagram C.
- λ Step 3 : Control the car from the transmitter by the bottoms as indicated in Diagram C below.

Diagram C



CAUTION:

- ⌞ Do not mix old and new batteries.
- ⌞ Do not mix alkaline, standard (carbon-zinc), or rechargeable (nickel-cadmium) batteries.
- ⌞ Do not dispose of batteries in fire as batteries may explode or leak.

Battery requirement: Rechargeable Batteries Pack (included).

Warning: Changes or modifications to this unit not expressly approved by the party responsible for compliance could void the user’s authority to operate the equipment.

NOTE: This equipment has been tested and found to comply with the limits for a Class B digital device, pursuant to Part 15 of the FCC Rules. These limits are designed to provide reasonable protection against harmful interference in a residential installation. This equipment generates, uses and can radiate radio frequency energy and, if not installed and used in accordance with the instructions, may cause harmful interference to radio communications. However, there is no guarantee that interference will not occur in a particular installation. If this equipment does cause harmful interference to radio or television reception, which can be determined by turning the equipment off and on, the user is encouraged to try to correct the interference by one or more of the following measures:

- Reorient or relocate the receiving antenna.
- Increase the separation between the equipment and receiver.
- Connect the equipment into an outlet on a circuit different from that to which the receiver is connected.
- Consult the dealer or an experienced radio/TV technician for help.