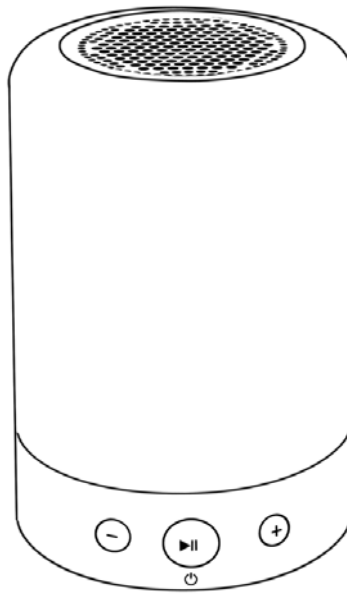


# CK128 User Manual



Picture is for reference only

## Dear Customer

Thank you for your excellent choice of CK128 music lamp. Please read instructions carefully before operating this Bluetooth speaker in order to bring it into full play. Unpack the box, please make sure you get following product and accessories: 1\* Music Lamp, 1\* Micro USB Charging Cable, 1\* User Manual. Please keep user manual properly for further reference.

## Product Introduction

Adopting digital signal processing technique, CK128 is an advanced and portable wireless music lamp for Bluetooth play, TF/SD card, external audio input and amplification, compatible with most Bluetooth enabled devices and applicable to indoor entertainment and outdoor activities.

## Attentions

For better performance maintaining, please keep this speaker away from following conditions:

- Damp or underwater conditions
- High-temperature conditions
- Direct-sun exposure conditions
- Easy fall off conditions

## Warnings



Please keep it away from water and damp.



Please make sure it is charged with specified voltage to avoid fire or electric shock hazards.

## Power Supply

Powered by the built-in 3.7V lithium battery. Please fully charge the speaker 3~5hrs before first time use and make sure to charge this speaker once a month due to its 3.7V self power consuming lithium battery. It takes about 3hrs to be

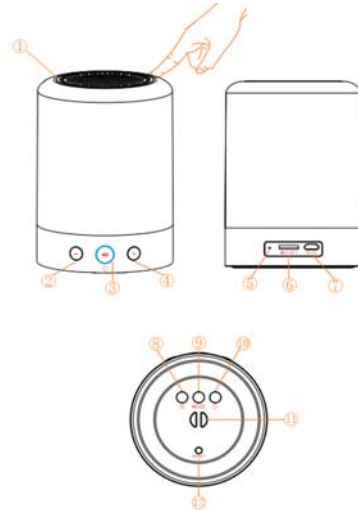
fully charged with a standard micro USB cable (DV 5V) if this speaker run out of juice completely.

This speaker could be charged any time in any mode, however, playing music while charging would greatly lower charging efficiency which is not recommended since there would be a relatively huge current consumption. Please make sure this speaker is fully charged and do please remember to unplug micro USB charging cable before music playing.

### Charging Alert

Speaker beeps the first time indicating less than 10% battery juice during music mode; Speaker beeps several times during music mode and power off automatically, do please to re-charge it.

### Diagram



1. Metal Ring: Touch to adjust lights or answer the phone call;  
press 3s to turn off lights
2. ⏮: Previous track/Volume-
3. ▶⏮: Long press to power on/off; short press to pause/play/answer/end a call  
(Indicator flashes in blue when music is on; in steady red when charging)
4. ⏭: Next track/Volume+
5. Microphone
6. TF/SD Card Slot
7. USB Port
8. Single Cycle
9. Mode Switch
10. Timer
11. Eyelet for string
12. Reset

### Bluetooth Mode

Turn on the speaker to enter into Bluetooth mode automatically (if not, switch mode by pressing “mode” button).

- Indicator flashes fast in blue and voice prompts, waiting for device connecting
- Turn on Bluetooth on your device
- Pair with “CK128” (If it’s already paired with your device, it will reconnect automatically)
- Voice prompts “Bluetooth Connected” and indicator goes on in blue steadily

### Hands-free Mode

When this speaker is connected your phone and, it rings for a coming call.

- Touch metal ring or short press ▶⏮ to answer incoming phone calls in Bluetooth mode
- Touch metal ring or short press ▶⏭ to hang up and back to music playing
- Reminder: To reject a call couldn’t be operated by the speaker

### **TF Card Mode**

Power on and insert TF / SD card, the speaker would read and play music inside automatically (supports MP3, WMA and WVA format).

### **TF Card Music Download**

Insert TF card and connect the speaker with your PC by USB cable to download music directly from the internet.

### **FM Mode**

- Switch to FM mode by pressing “Mode” button
- Voice prompts “TF card mode”
- Under TF card mode, press ►|| to search for radio stations and press again to end it
- Indicator flashes fast during station searching
- Selected radio station would be saved automatically

### **Lamp Instruction**

Speaker power on, finger touch or palm pat the metal ring to turn on the light. Touch repeatedly to sequentially shift to dim white light, low white light, medium white light, high white light, red light, blue light, green light, alternating light (pause a color by pressing it); press again to run the circle again. Press the metal ring for 3s to turn off light.

### **Timer Instruction**

Press the “timer” button to shift between 10mins, 20mins, 30mins, 60mins, 90mins and 120mins timing. Both lamp and speaker turn off automatically after set time. Press the “timer” button for 3s to cancel timing.

### **Technical Parameters**

Battery Capacity: 3.7V, 2000mAh  
Charging Time: 3-3.5H  
Driver Diameter:  $\phi 52 \times 32$ mm  
Speaker Power: 4 $\Omega$ , 4W  
Frequency Response: 70HZ-20KHZ  
Bluetooth Version: V2.1+EDR  
Distortion:  $\leq 0.5\%$   
SNR:  $\geq 65$ db  
Main Material: ABS/PP, stainless steel  
Product Dimensions: 86\*86\*121mm  
Weight: 350g  
Light Power: 1.2W

### Troubleshooting

Situation	Solution
Bluetooth failed to connect	Make sure it is disconnected with previous device since it would auto-connect to the last connected device. Please search and connect speaker with new device.
Low or no volume	A: This speaker is designed with low output volume . B: Make sure you've turned up volume of both devices and this speaker.
Poor Bluetooth connection while playing music	Make sure there is no barrier between the speaker and your Bluetooth device. Make sure the speaker isn't too far away from your Bluetooth device. Working scope is less than 10 meters.

Indicator light is off during music playing	Low battery and please to charge
Failed to connect with two devices	It could not pair with two devices simultaneously. Please disconnect with the first device and turn off the Bluetooth function of the first device. To pair and connect with the second device, please turn on the Bluetooth of the second device to pair with this speaker.
No audio output from TF/SD card	A: Check the volume and the play/pause button. B: Make sure TF/SD card insert into card slot completely. C: Try new music. The original music might be incompatible or damaged..
Reset	If the above measures could not solve the problem, please reset this speaker.

#### Tips

- Don't disassemble or remold it
- Please charge it within the required power range
- Please keep the volume moderate to avoid hearing damage
- Disassembling it renders the warranty invalid

#### Notes

If all those solutions above failed to shoot troubles, please send email directly to [ckyservice@hotmail.com](mailto:ckyservice@hotmail.com) and turn to our customer officer for help. We promise every valuable customer with 3-month no hassle after-sale services.

**Company Information**

Vomaxtech Limited is an energetic startup, established by the returnee from Chicago along with a group of like-minded comrades. We focus on the best customer experience and creating an exclusive product world for them. Here, we have a powerful Statistics Analysis team dedicated to market research to ensure every product suit customers' usage habits and aesthetic standard best. The distinctive R &D team makes every product more energetic to guarantee customers a perfect experience. Besides, the strict QC system and the most intimate service team are ready here to serve you in every detail whenever you need.



## Warning:

changes or modifications not expressly approved by the party responsible for compliance could void the user's authority to operate the equipment.

This device complies with Part 15 of the FCC Rules. Operation is subject to the following two conditions: (1) this device may not cause harmful interference, and (2) this device must accept any interference received, including interference that may cause undesired operation. changes or modifications not expressly approved by the party responsible for compliance could void the user's authority to operate the equipment.

NOTE: This equipment has been tested and found to comply with the limits for a Class B digital device, pursuant to Part 15 of the FCC Rules. These limits are designed to provide reasonable protection against harmful interference in a residential installation. This equipment generates, uses and can radiate radio frequency energy and, if not installed and used in accordance with the instructions, may cause harmful interference to radio communications. However, there is no guarantee that interference will not occur in a particular installation. If this equipment does cause harmful interference to radio or television reception, which can be determined by turning the equipment off and on, the user is encouraged to try to correct the interference by one or more of the following measures:

- Reorient or relocate the receiving antenna.
- Increase the separation between the equipment and receiver.
- Connect the equipment into an outlet on a circuit different

from that to which the receiver is connected.

-- Consult the dealer or an experienced radio/TV technician for help.

NOTE: This device and its antenna(s) must not be co-located or operation in conjunction with any other antenna or transmitter.