



## **STC Test Report**

**Date:** 2011-08-19

**Page 1 of 22**

**No.:** MH185441

**Applicant (C00676):** Shenzhen Shenchuang Electronics Co., Ltd.  
7th Floor, West Tower, Hengfang Laobing Industrial Park,  
Xingye Road, Xixiang Town, Baoan District, shenzhen,  
China

**Manufacturer:** Shenzhen Shenchuang Electronics Co., Ltd.  
7th Floor, West Tower, Hengfang Laobing Industrial Park,  
Xingye Road, Xixiang Town, Baoan District, shenzhen,  
China

**Description of Sample(s):** Product: Remote control  
Brand Name: N/A  
Model Number: G9001  
FCC ID: ZIEG9001

**Date Sample(s) Received:** 2011-07-05

**Date Tested:** 2011-07-30

**Investigation Requested:** Perform ElectroMagnetic Interference measurement in  
accordance with FCC 47CFR [Codes of Federal Regulations]  
Part 15: 2010 and ANSI C63.4:2009 for FCC Certification.

**Conclusion(s):** The submitted product COMPLIED with the requirements of  
Federal Communications Commission [FCC] Rules and  
Regulations Part 15. The tests were performed in accordance  
with the standards described above and on Section 2.2 in this  
Test Report.

**Remark(s):** ---



Dr. LEE Kam Chuen  
Authorized Signatory  
ElectroMagnetic Compatibility Department  
For and on behalf of  
The Hong Kong Standards and Testing Centre Ltd.

**The Hong Kong Standards and Testing Centre Ltd.**

10 Dai Wang Street, Taipo Industrial Estate, N.T., Hong Kong  
Tel: (852) 2666 1888 Fax: (852) 2664 4353 E-mail: hkstc@hkstc.org Homepage: www.stc-group.org

This report shall not be reproduced unless with prior written approval from The Hong Kong Standards and Testing Centre Ltd.  
For Conditions of Issuance of this test report, please refer to the overleaf or Homepage

**Please refer to the original test report as this e-report is for reference only!**



## **STC Test Report**

**Date: 2011-08-19**

**No.: MH185441**

**Page 2 of 22**

### **CONTENT:**

Cover	Page 1 of 22
Content	Page 2-3 of 22
<b><u>1.0</u></b>	<b><u>General Details</u></b>
1.1	Equipment Under Test [EUT] Description of EUT operation
1.2	Date of Order
1.3	Submitted Sample
1.4	Test Duration
1.5	Country of Origin
<b><u>2.0</u></b>	<b><u>Technical Details</u></b>
2.1	Investigations Requested
2.2	Test Standards and Results Summary
<b><u>3.0</u></b>	<b><u>Test Results</u></b>
3.1	Radiated Emission

**The Hong Kong Standards and Testing Centre Ltd.**

10 Dai Wang Street, Taipo Industrial Estate, N.T., Hong Kong  
Tel: (852) 2666 1888 Fax: (852) 2664 4353 E-mail: hkstc@hkstc.org Homepage: www.stc-group.org

This report shall not be reproduced unless with prior written approval from The Hong Kong Standards and Testing Centre Ltd.  
For Conditions of Issuance of this test report, please refer to the overleaf or Homepage

**Please refer to the original test report as this e-report is for reference only!**



## **STC Test Report**

**Date: 2011-08-19**

**No.: MH185441**

**Page 3 of 22**

### **Appendix A**

List of Measurement Equipment

Page 17 of 22

### **Appendix B**

Duty Cycle Correction During 100 msec

Page 18-20 of 22

### **Appendix C**

Photographs

Page 21-22 of 22

**The Hong Kong Standards and Testing Centre Ltd.**

10 Dai Wang Street, Taipo Industrial Estate, N.T., Hong Kong  
Tel: (852) 2666 1888 Fax: (852) 2664 4353 E-mail: [hkstc@hkstc.org](mailto:hkstc@hkstc.org) Homepage: [www.stc-group.org](http://www.stc-group.org)

This report shall not be reproduced unless with prior written approval from The Hong Kong Standards and Testing Centre Ltd.  
For Conditions of Issuance of this test report, please refer to the overleaf or Homepage

**Please refer to the original test report as this e-report is for reference only!**



## **STC Test Report**

**Date: 2011-08-19**

**Page 4 of 22**

**No.: MH185441**

### **1.0 General Details**

#### **1.1 Equipment Under Test [EUT] Description of Sample(s)**

Product:	Remote control
Manufacturer:	Shenzhen Shenchuang Electronics Co., Ltd.
Brand Name:	N/A
Model Number:	G9001
Input Voltage:	4.5Vd.c. ("AAA" size battery × 3)

#### **1.1.1 Description of EUT Operation**

The Equipment Under Test (EUT) is a Shenzhen Shenchuang Electronics Co., Ltd., Remote control. The transmission signal is frequency hopping with channel frequency range 2402.0.-2480.0MHz during normal use. The EUT was set to fixed frequency test mode by application.

#### **1.2 Date of Order**

2011-07-05

#### **1.3 Submitted Sample(s):**

1 Sample

#### **1.4 Test Duration**

2011-07-30

#### **1.5 Country of Origin**

China

**The Hong Kong Standards and Testing Centre Ltd.**

10 Dai Wang Street, Taipo Industrial Estate, N.T., Hong Kong  
Tel: (852) 2666 1888 Fax: (852) 2664 4353 E-mail: hkstc@hkstc.org Homepage: www.stc-group.org

This report shall not be reproduced unless with prior written approval from The Hong Kong Standards and Testing Centre Ltd.  
For Conditions of Issuance of this test report, please refer to the overleaf or Homepage

**Please refer to the original test report as this e-report is for reference only!**



## **STC Test Report**

**Date: 2011-08-19**

**Page 5 of 22**

**No.: MH185441**

### **2.0 Technical Details**

#### **2.1 Investigations Requested**

Perform Electromagnetic Interference measurements in accordance with FCC 47CFR [Codes of Federal Regulations] Part 15: 2010 Regulations and ANSI C63.4:2009 for FCC Certification.

#### **2.2 Test Standards and Results Summary Tables**

<b>EMISSION Results Summary</b>						
Test Condition	Test Requirement	Test Method	Class / Severity	Test Result		
				Pass	Fail	N/A
Field Strength of Fundamental & Harmonics Emissions	FCC 47CFR 15.249	ANSI C63.4:2009	N/A	<input checked="" type="checkbox"/>	<input type="checkbox"/>	<input type="checkbox"/>
Radiated Emissions	FCC 47CFR 15.209	ANSI C63.4:2009	N/A	<input checked="" type="checkbox"/>	<input type="checkbox"/>	<input type="checkbox"/>

Note: N/A - Not Applicable

**The Hong Kong Standards and Testing Centre Ltd.**

10 Dai Wang Street, Taipo Industrial Estate, N.T., Hong Kong  
Tel: (852) 2666 1888 Fax: (852) 2664 4353 E-mail: hkstc@hkstc.org Homepage: www.stc-group.org

This report shall not be reproduced unless with prior written approval from The Hong Kong Standards and Testing Centre Ltd.  
For Conditions of Issuance of this test report, please refer to the overleaf or Homepage

**Please refer to the original test report as this e-report is for reference only!**



## **STC Test Report**

**Date: 2011-08-19**

**Page 6 of 22**

**No.: MH185441**

### **3.0 Test Results**

#### **3.1 Emission**

##### **3.1.1 Radiated Emissions**

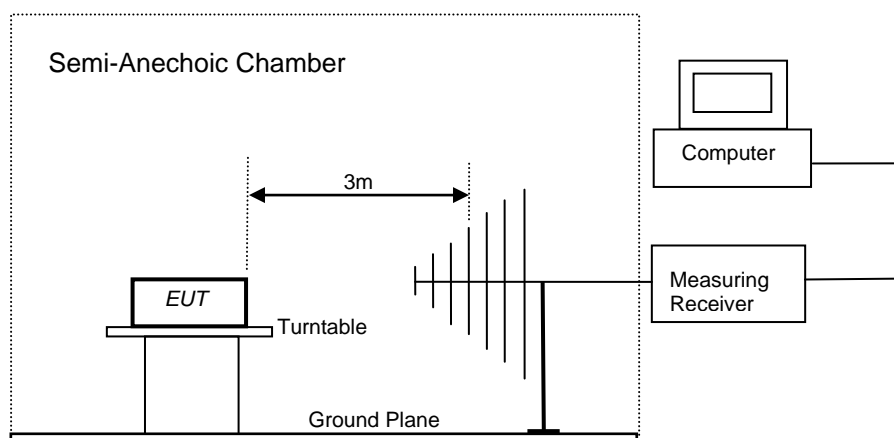
Test Requirement:	FCC 47CFR 15.249
Test Method:	ANSI C63.4:2009
Test Date:	2011-07-30
Mode of Operation:	Communication mode with TV BOX (Tx mode & Rx mode)

#### **Test Method:**

The sample was placed 0.8m above the ground plane of semi-anechoic Chamber\*. Measurements in both horizontal and vertical polarities were performed. During the test, each emission was maximized by: having the EUT continuously working, investigated all operating modes, rotated about all 3 axis (X, Y & Z) and considered typical configuration to obtain worst position, manipulating interconnecting cables, rotating turntable, varying antenna height from 1m to 4m in both horizontal and vertical polarizations. The emissions worst-case are shown in Test Results of the following pages.

\* Semi-anechoic chamber located on the G/F of The Hong Kong Standards and Testing Centre Ltd. with a metal ground plane filed with the FCC pursuant to section 2.948 of the FCC rules, with Registration Number: 607756.

#### **Test Setup:**



**The Hong Kong Standards and Testing Centre Ltd.**

10 Dai Wang Street, Taipo Industrial Estate, N.T., Hong Kong  
Tel: (852) 2666 1888 Fax: (852) 2664 4353 E-mail: hkstc@hkstc.org Homepage: www.stc-group.org

This report shall not be reproduced unless with prior written approval from The Hong Kong Standards and Testing Centre Ltd.  
For Conditions of Issuance of this test report, please refer to the overleaf or Homepage

**Please refer to the original test report as this e-report is for reference only!**



## STC Test Report

**Date: 2011-08-19**

**Page 7 of 22**

**No.: MH185441**

**Limits for Field Strength of Fundamental & Harmonics Emissions [FCC 47CFR 15.249]:**

Frequency Range of Fundamental [MHz]	Field Strength of Fundamental Emission [microvolts/meter]	Field Strength of Harmonics Emission [microvolts/meter]
902-928	50,000 [Average]	500 [Average]
2400-2483.5	50,000 [Average]	500 [Average]

**Results of Tx mode (low frequency channel): Pass**

Field Strength of Fundamental Emissions Peak Value						
Frequency MHz	Measured Level @3m dBμV/m	Correction Factor dBμV/m	Field Strength dBμV/m	Field Strength μV/m	Limit @3m μV/m	E-Field Polarity
2402.0	55.2	35.4	90.6	33,884.4	500,000	Vertical
4804.0	14.9	41.5	56.4	660.7	5,000	Vertical
7206.0	5.4	48.8	54.2	512.9	5,000	Vertical
* 12010.0	<b>No Emission Detected</b>				5,000	Vertical
14412.0					5,000	Vertical
16814.0					5,000	Vertical
* 19216.0					5,000	Vertical
21618.0					5,000	Vertical
24020.0					5,000	Vertical

Field Strength of Fundamental Emissions Average Value						
Frequency MHz	Measured Level @3m dBμV/m	Correction Factor dBμV/m	Field Strength dBμV/m	Field Strength μV/m	Limit @3m μV/m	E-Field Polarity
+ 2402.0	35.2	35.4	70.6	3,388.4	50,000	Vertical
+ 4804.0	-5.1	41.5	36.4	66.1	500	Vertical
+ 7206.0	-14.6	48.8	34.2	51.3	500	Vertical

**Remarks:**

No additional spurious emissions found between lowest internal used/generated frequency and 30 MHz

\*: Denotes restricted band of operation.

Measurements were made using a peak detector. Any emission less than 1000 MHz and falling within the restricted bands of FCC Rules Part 15 Section 15.205 and the limits of FCC Rules Part 15 Section 15.209 were applied.

+: Adjusted by Duty Cycle = -25.7dB

Calculated measurement uncertainty : 30MHz to 1GHz 5.2dB  
1GHz to 18GHz 5.1dB

**The Hong Kong Standards and Testing Centre Ltd.**

10 Dai Wang Street, Taipo Industrial Estate, N.T., Hong Kong  
Tel: (852) 2666 1888 Fax: (852) 2664 4353 E-mail: hkstc@hkstc.org Homepage: www.stc-group.org

This report shall not be reproduced unless with prior written approval from The Hong Kong Standards and Testing Centre Ltd.  
For Conditions of Issuance of this test report, please refer to the overleaf or Homepage

**Please refer to the original test report as this e-report is for reference only!**



## STC Test Report

**Date: 2011-08-19**

**Page 8 of 22**

**No.: MH185441**

**Limits for Field Strength of Fundamental & Harmonics Emissions [FCC 47CFR 15.249]:**

Frequency Range of Fundamental [MHz]	Field Strength of Fundamental Emission [microvolts/meter]	Field Strength of Harmonics Emission [microvolts/meter]
902-928	50,000 [Average]	500 [Average]
2400-2483.5	50,000 [Average]	500 [Average]

**Results of Tx mode (Middle frequency channel): Pass**

Field Strength of Fundamental Emissions Peak Value						
Frequency MHz	Measured Level @3m dBμV/m	Correction Factor dBμV/m	Field Strength dBμV/m	Field Strength μV/m	Limit @3m μV/m	E-Field Polarity
2440.0	54.0	35.5	89.5	29,853.8	500,000	Vertical
4880.0	17.0	41.4	58.4	831.8	5,000	Vertical
7320.0	7.9	48.7	56.6	676.1	5,000	Vertical
9760.0	No Emission Detected				5,000	Vertical
* 12200.0					5,000	Vertical
14640.0					5,000	Vertical
17080.0					5,000	Vertical
* 19520.0					5,000	Vertical
21960.0					5,000	Vertical

Field Strength of Fundamental Emissions Average Value						
Frequency MHz	Measured Level @3m dBμV/m	Correction Factor dBμV/m	Field Strength dBμV/m	Field Strength μV/m	Limit @3m μV/m	E-Field Polarity
+ 2440.0	34.0	35.5	69.5	2,985.4	50,000	Vertical
+ 4880.0	-3.0	41.4	38.4	83.2	500	Vertical
+ 7320.0	-12.1	48.7	36.6	67.6	500	Vertical

**Remarks:**

No additional spurious emissions found between lowest internal used/generated frequency and 30 MHz

\*: Denotes restricted band of operation.

Measurements were made using a peak detector. Any emission less than 1000 MHz and falling within the restricted bands of FCC Rules Part 15 Section 15.205 and the limits of FCC Rules Part 15 Section 15.209 were applied.

+: Adjusted by Duty Cycle = -25.7dB

Calculated measurement uncertainty : 30MHz to 1GHz 5.2dB  
1GHz to 18GHz 5.1dB

**The Hong Kong Standards and Testing Centre Ltd.**

10 Dai Wang Street, Taipo Industrial Estate, N.T., Hong Kong  
Tel: (852) 2666 1888 Fax: (852) 2664 4353 E-mail: hkstc@hkstc.org Homepage: www.stc-group.org

This report shall not be reproduced unless with prior written approval from The Hong Kong Standards and Testing Centre Ltd.  
For Conditions of Issuance of this test report, please refer to the overleaf or Homepage

**Please refer to the original test report as this e-report is for reference only!**





## STC Test Report

**Date: 2011-08-19**

**Page 9 of 22**

**No.: MH185441**

**Limits for Field Strength of Fundamental & Harmonics Emissions [FCC 47CFR 15.249]:**

Frequency Range of Fundamental [MHz]	Field Strength of Fundamental Emission [microvolts/meter]	Field Strength of Harmonics Emission [microvolts/meter]
902-928	50,000 [Average]	500 [Average]
2400-2483.5	50,000 [Average]	500 [Average]

**Results of Tx mode (High frequency channel): Pass**

Field Strength of Fundamental Emissions Peak Value						
Frequency MHz	Measured Level @3m dBμV/m	Correction Factor dBμV/m	Field Strength dBμV/m	Field Strength μV/m	Limit @3m μV/m	E-Field Polarity
2480.0	55.9	35.8	91.7	38,459.2	500,000	Vertical
4960.0	9.6	41.4	51.0	354.8	5,000	Vertical
7440.0	6.1	48.6	54.7	543.3	5,000	Vertical
9920.0	No Emission Detected				5,000	Vertical
* 12400.0					5,000	Vertical
14880.0					5,000	Vertical
17360.0					5,000	Vertical
* 19840.0					5,000	Vertical
22320.0					5,000	Vertical
24800.0					5,000	Vertical

Field Strength of Fundamental Emissions Average Value						
Frequency MHz	Measured Level @3m dBμV/m	Correction Factor dBμV/m	Field Strength dBμV/m	Field Strength μV/m	Limit @3m μV/m	E-Field Polarity
+ 2480.0	35.9	35.8	71.7	3,845.9	50,000	Vertical
+ 4960.0	-10.4	41.4	31.0	35.5	500	Vertical
+ 7440.0	-13.9	48.6	34.7	54.3	500	Vertical

**Remarks:**

No additional spurious emissions found between lowest internal used/generated frequency and 30 MHz

\*: Denotes restricted band of operation.

Measurements were made using a peak detector. Any emission less than 1000 MHz and falling within the restricted bands of FCC Rules Part 15 Section 15.205 and the limits of FCC Rules Part 15 Section 15.209 were applied.

+: Adjusted by Duty Cycle = -25.7dB

Calculated measurement uncertainty : 30MHz to 1GHz 5.2dB  
1GHz to 18GHz 5.1dB

**The Hong Kong Standards and Testing Centre Ltd.**

10 Dai Wang Street, Taipo Industrial Estate, N.T., Hong Kong  
Tel: (852) 2666 1888 Fax: (852) 2664 4353 E-mail: hkstc@hkstc.org Homepage: www.stc-group.org

This report shall not be reproduced unless with prior written approval from The Hong Kong Standards and Testing Centre Ltd.  
For Conditions of Issuance of this test report, please refer to the overleaf or Homepage

**Please refer to the original test report as this e-report is for reference only!**



## STC Test Report

Date: 2011-08-19

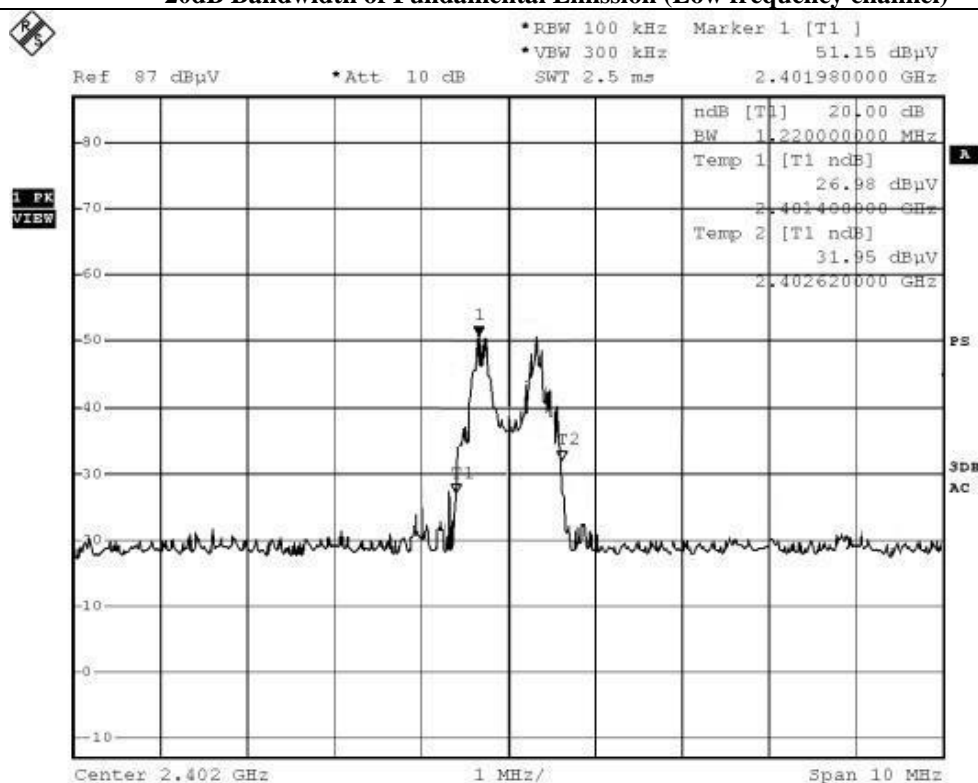
Page 10 of 22

No.: MH185441

Limits for 20dB Bandwidth of Fundamental Emission:

Frequency Range [MHz]	20dB Bandwidth [MHz]
2402	1.22

### 20dB Bandwidth of Fundamental Emission (Low frequency channel)



The Hong Kong Standards and Testing Centre Ltd.

10 Dai Wang Street, Taipo Industrial Estate, N.T., Hong Kong  
Tel: (852) 2666 1888 Fax: (852) 2664 4353 E-mail: hkstc@hkstc.org Homepage: www.stc-group.org

This report shall not be reproduced unless with prior written approval from The Hong Kong Standards and Testing Centre Ltd.  
For Conditions of Issuance of this test report, please refer to the overleaf or Homepage

**Please refer to the original test report as this e-report is for reference only!**



## STC Test Report

Date: 2011-08-19

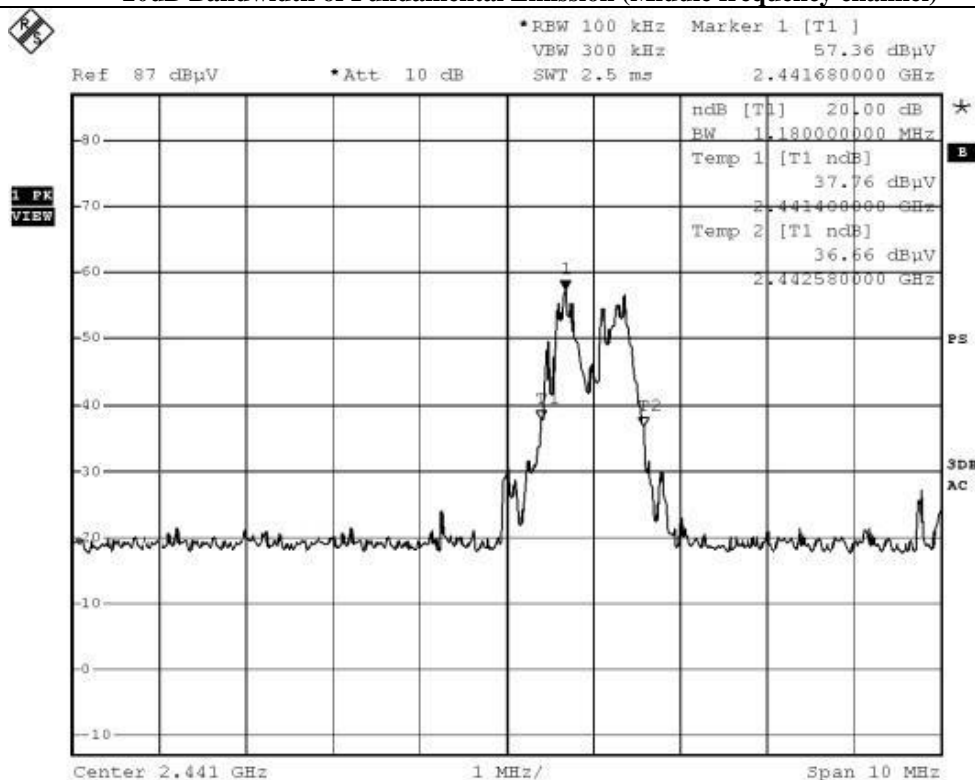
Page 11 of 22

No.: MH185441

### Limits for 20dB Bandwidth of Fundamental Emission:

Frequency Range [MHz]	20dB Bandwidth [MHz]
2441	1.18

### 20dB Bandwidth of Fundamental Emission (Middle frequency channel)



The Hong Kong Standards and Testing Centre Ltd.

10 Dai Wang Street, Taipo Industrial Estate, N.T., Hong Kong  
Tel: (852) 2666 1888 Fax: (852) 2664 4353 E-mail: hkstc@hkstc.org Homepage: www.stc-group.org

This report shall not be reproduced unless with prior written approval from The Hong Kong Standards and Testing Centre Ltd.

For Conditions of Issuance of this test report, please refer to the overleaf or Homepage

**Please refer to the original test report as this e-report is for reference only!**



## STC Test Report

Date: 2011-08-19

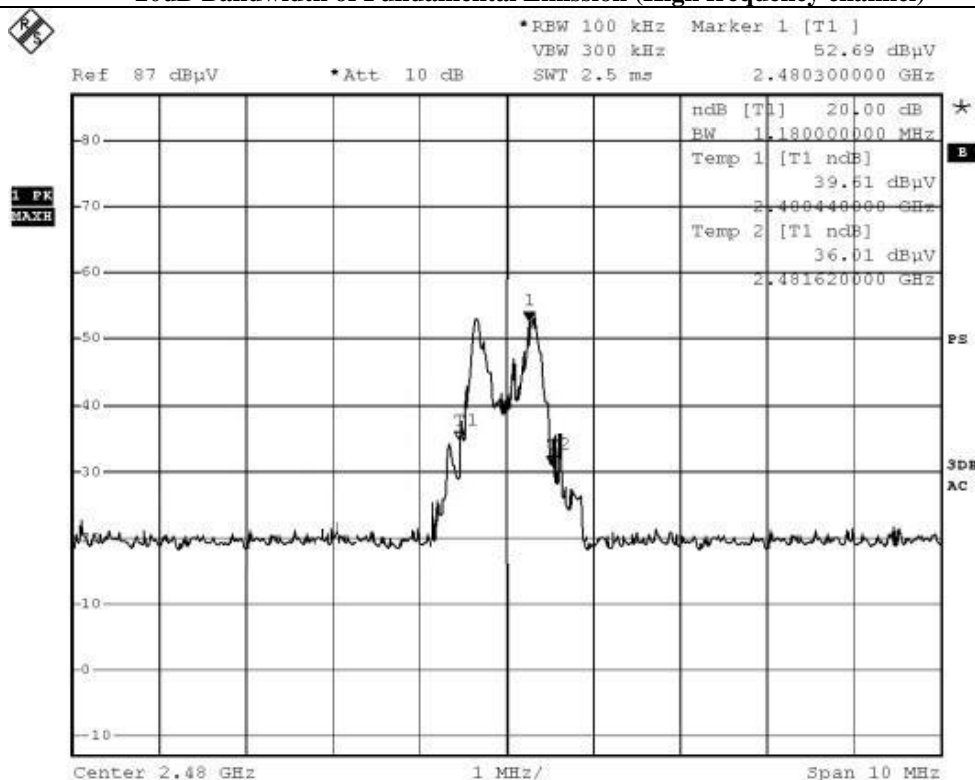
Page 12 of 22

No.: MH185441

### Limits for 20dB Bandwidth of Fundamental Emission:

Frequency Range [MHz]	20dB Bandwidth [MHz]
2480	1.18

### 20dB Bandwidth of Fundamental Emission (High frequency channel)



The Hong Kong Standards and Testing Centre Ltd.

10 Dai Wang Street, Taipo Industrial Estate, N.T., Hong Kong  
Tel: (852) 2666 1888 Fax: (852) 2664 4353 E-mail: hkstc@hkstc.org Homepage: www.stc-group.org

This report shall not be reproduced unless with prior written approval from The Hong Kong Standards and Testing Centre Ltd.  
For Conditions of Issuance of this test report, please refer to the overleaf or Homepage

**Please refer to the original test report as this e-report is for reference only!**



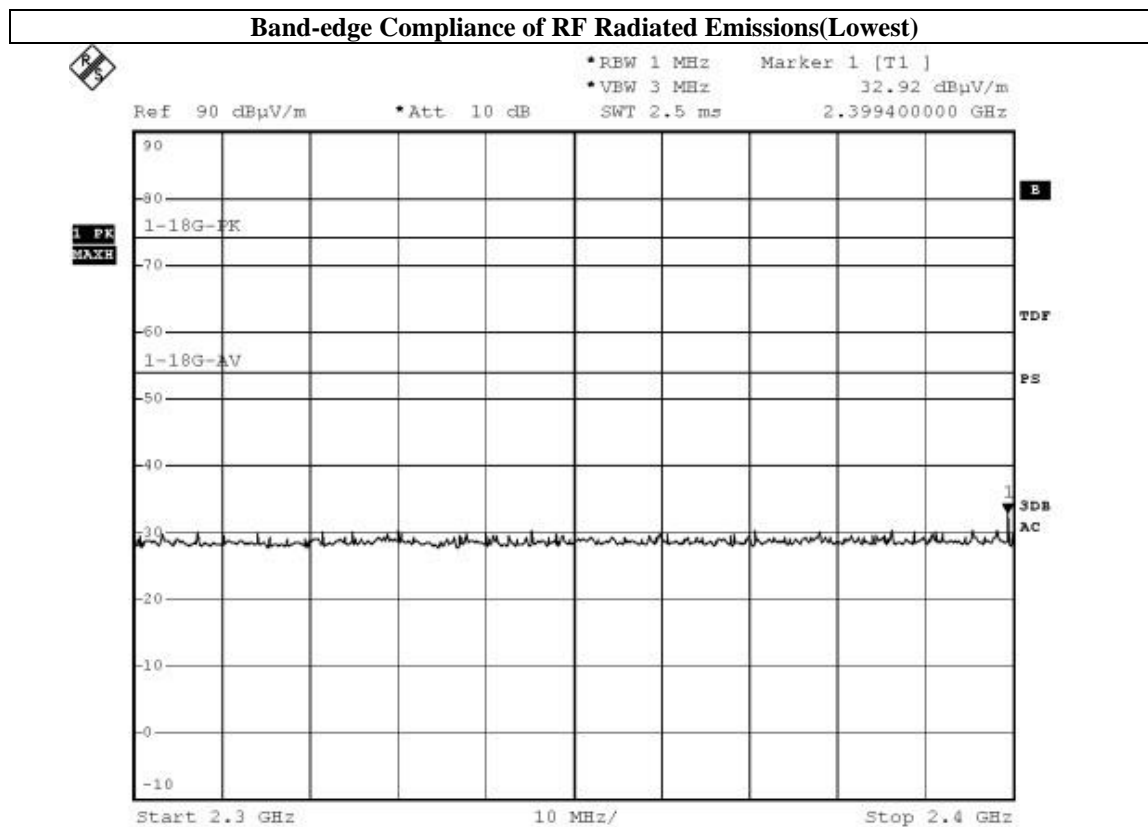
## STC Test Report

Date: 2011-08-19

Page 13 of 22

No.: MH185441

### Band Edge Measurement:



**The Hong Kong Standards and Testing Centre Ltd.**

10 Dai Wang Street, Taipo Industrial Estate, N.T., Hong Kong  
Tel: (852) 2666 1888      Fax: (852) 2664 4353      E-mail: hkstc@hkstc.org      Homepage: www.stc-group.org

This report shall not be reproduced unless with prior written approval from The Hong Kong Standards and Testing Centre Ltd.  
For Conditions of Issuance of this test report, please refer to the overleaf or Homepage

**Please refer to the original test report as this e-report is for reference only!**



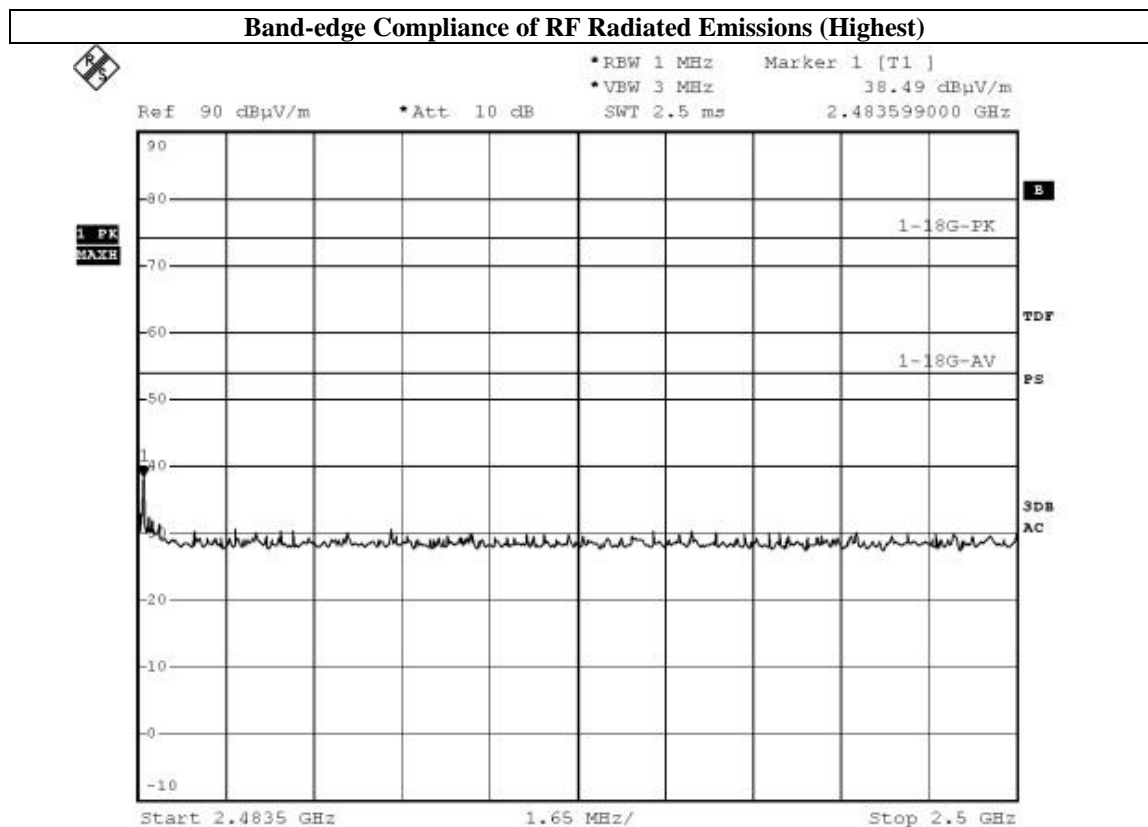
## STC Test Report

Date: 2011-08-19

Page 14 of 22

No.: MH185441

### Band Edge Measurement:



**The Hong Kong Standards and Testing Centre Ltd.**

10 Dai Wang Street, Taipo Industrial Estate, N.T., Hong Kong  
Tel: (852) 2666 1888      Fax: (852) 2664 4353      E-mail: hkstc@hkstc.org      Homepage: www.stc-group.org

This report shall not be reproduced unless with prior written approval from The Hong Kong Standards and Testing Centre Ltd.  
For Conditions of Issuance of this test report, please refer to the overleaf or Homepage

**Please refer to the original test report as this e-report is for reference only!**



## STC Test Report

**Date: 2011-08-19**

**Page 15 of 22**

**No.: MH185441**

**Limits for Radiated Emissions [FCC 47 CFR 15.209 Class B]:**

Frequency Range [MHz]	Quasi-Peak Limits [μV/m]
0.009-0.490	2400/F (kHz)
0.490-1.705	24000/F (kHz)
1.705-30	30
30-88	100
88-216	150
216-960	200
Above 960	500

The emission limits shown in the above table are based on measurement employing a CISPR quasi-peak detector and above 1000MHz are based on measurements employing an average detector.

**Results of Communication mode with TV Box(9kHz-30MHz): PASS**

Emissions detected are more than 20 dB below the FCC Limits

**Results of Communication mode with TV Box: PASS**

Please refer to the following table for result details

Radiated Emissions Quasi-Peak					
Emission Frequency MHz	E-Field Polarity	Level @3m dBμV/m	Limit @3m dBμV/m	Level @3m μV/m	Limit @3m μV/m
222.8	Horizontal	27.9	46.0	24.8	200
500.0	Horizontal	36.4	46.0	66.1	200
718.6	Horizontal	41.6	46.0	120.2	200
850.0	Horizontal	40.9	46.0	110.9	200
44.1	Vertical	34.4	40.0	52.5	100
112.3	Vertical	33.0	43.5	44.7	150
192.1	Vertical	28.9	43.5	27.9	150
515.5	Vertical	36.3	46.0	65.3	200
908.3	Vertical	41.5	46.0	118.9	200

Remarks:

No additional spurious emissions found between lowest internal used/generated frequency and 30 MHz

Correction Factor included Antenna Factor and Cable Attenuation.

Calculated measurement uncertainty	:	30MHz to 1GHz	5.2dB
		1GHz to 18GHz	5.1dB

**The Hong Kong Standards and Testing Centre Ltd.**

10 Dai Wang Street, Taipo Industrial Estate, N.T., Hong Kong  
Tel: (852) 2666 1888 Fax: (852) 2664 4353 E-mail: hkstc@hkstc.org Homepage: www.stc-group.org

This report shall not be reproduced unless with prior written approval from The Hong Kong Standards and Testing Centre Ltd.  
For Conditions of Issuance of this test report, please refer to the overleaf or Homepage

**Please refer to the original test report as this e-report is for reference only!**



## **STC Test Report**

**Date: 2011-08-19**

**Page 16 of 22**

**No.: MH185441**

**Limits for Radiated Emissions [FCC 47 CFR 15.209 Class B]:**

Frequency Range [MHz]	Quasi-Peak Limits [μV/m]
0.009-0.490	2400/F (kHz)
0.490-1.705	24000/F (kHz)
1.705-30	30
30-88	100
88-216	150
216-960	200
Above960	500

The emission limits shown in the above table are based on measurement employing a CISPR quasi-peak detector and above 1000MHz are based on measurements employing an average detector.

**Results of Rx mode: PASS**

Emissions detected are more than 20 dB below the FCC Limits.

**Remarks:**

No additional spurious emissions found between lowest internal used/generated frequency and 30 MHz

Correction Factor included Antenna Factor and Cable Attenuation.

Calculated measurement uncertainty : 30MHz to 1GHz 5.2dB  
1GHz to 18GHz 5.1dB

**The Hong Kong Standards and Testing Centre Ltd.**

10 Dai Wang Street, Taipo Industrial Estate, N.T., Hong Kong  
Tel: (852) 2666 1888 Fax: (852) 2664 4353 E-mail: hkstc@hkstc.org Homepage: www.stc-group.org

This report shall not be reproduced unless with prior written approval from The Hong Kong Standards and Testing Centre Ltd.  
For Conditions of Issuance of this test report, please refer to the overleaf or Homepage

**Please refer to the original test report as this e-report is for reference only!**





## **STC Test Report**

**Date: 2011-08-19**

**Page 17 of 22**

**No.: MH185441**

### **Appendix A**

#### **List of Measurement Equipment**

##### **Radiated Emission**

<b>EQP NO.</b>	<b>DESCRIPTION</b>	<b>MANUFACTURER</b>	<b>MODEL NO.</b>	<b>SERIAL NO.</b>	<b>LAST CAL</b>	<b>DUE CAL</b>
EM020	HORN ANTENNA	EMCO	3115	4032	2009/09/02	2011/09/02
EM215	MULTIDEVICE CONTROLLER	EMCO	2090	00024676	N/A	N/A
EM216	MINI MAST SYSTEM	EMCO	2075	00026842	N/A	N/A
EM217	ELECTRIC POWERED TURNABLE	EMCO	2088	00029144	N/A	N/A
EM218	ANECHOIC CHAMBER	ETS-Linggren	FACT-3	--	2010/10/25	2011/11/25
EM174	BICONILOG ANTENNA	EMCO	3142B	1671	2010/02/09	2012/02/09
EM229	EMI Test Receiver	R&S	ESIB40	100248	2011/04/26	2012/04/26

Remarks:-

CM      Corrective Maintenance

N/A     Not Applicable

TBD     To Be Determined

**The Hong Kong Standards and Testing Centre Ltd.**

10 Dai Wang Street, Taipo Industrial Estate, N.T., Hong Kong  
Tel: (852) 2666 1888   Fax: (852) 2664 4353   E-mail: [hkstc@hkstc.org](mailto:hkstc@hkstc.org)   Homepage: [www.stc-group.org](http://www.stc-group.org)

This report shall not be reproduced unless with prior written approval from The Hong Kong Standards and Testing Centre Ltd.  
For Conditions of Issuance of this test report, please refer to the overleaf or Homepage

**Please refer to the original test report as this e-report is for reference only!**



## STC Test Report

Date: 2011-08-19

Page 18 of 22

No.: MH185441

### Appendix B

#### Duty Cycle Correction During 100msec

Each sample unit sends a different series of characters, but each pulse period (100msec) never exceeds a series of 11 sole (0.47msec) pulses. Assuming any combination of sole pulses may be obtained due to encoding the worst case transmit duty cycle would be considered  $11 \times 0.47\text{msec}$  per 100msec = 5.17% duty cycle. Figure A through B show the characteristics of the pulse train for one of these functions.

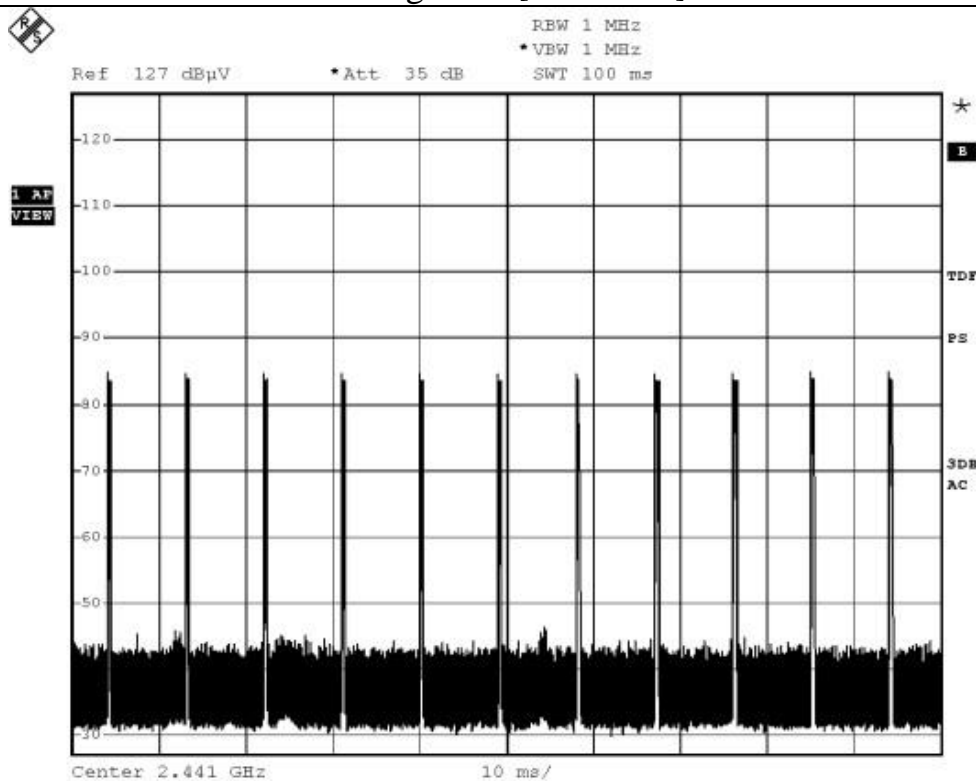
Remarks:

Duty Cycle Correction =  $20\text{Log}(0.0517) = -25.7\text{ dB}$

Duty Cycle Correction = -20dB, if the calculation duty cycle correction > -20dB.

The following figures [Figure A to Figure B] showed the characteristics of the pulse train for one of these functions.

Figure A [Pulse Train]



The Hong Kong Standards and Testing Centre Ltd.

10 Dai Wang Street, Taipo Industrial Estate, N.T., Hong Kong  
Tel: (852) 2666 1888 Fax: (852) 2664 4353 E-mail: hkstc@hkstc.org Homepage: www.stc-group.org

This report shall not be reproduced unless with prior written approval from The Hong Kong Standards and Testing Centre Ltd.

For Conditions of Issuance of this test report, please refer to the overleaf or Homepage

**Please refer to the original test report as this e-report is for reference only!**



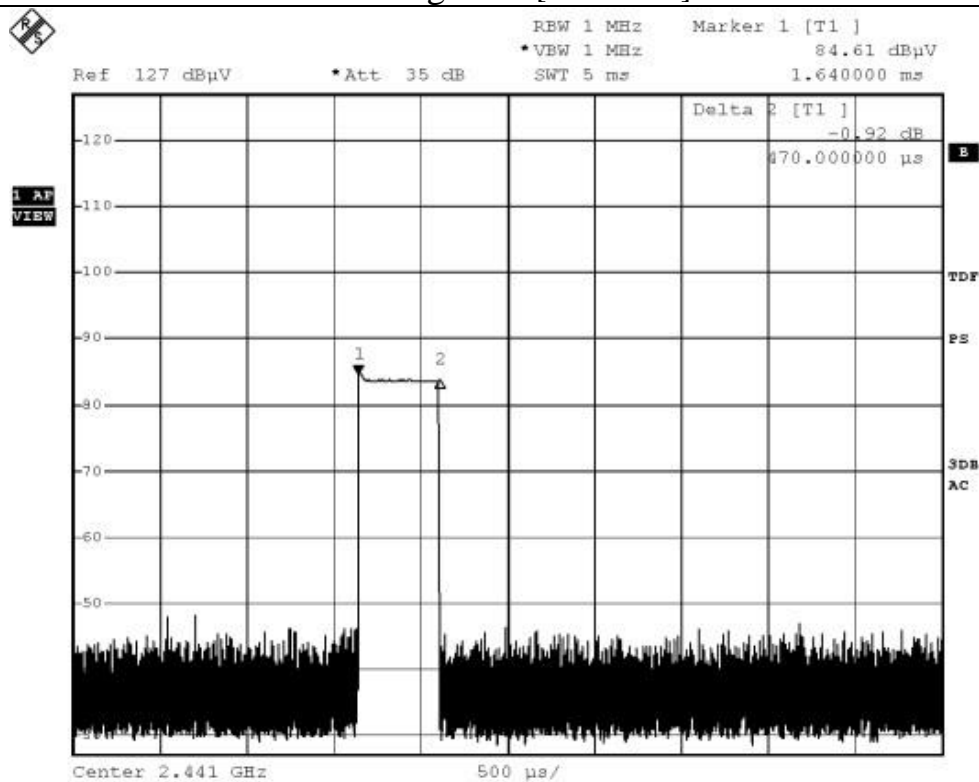
## STC Test Report

Date: 2011-08-19

No.: MH185441

Page 19 of 22

Figure B [Sole Pulse]



The Hong Kong Standards and Testing Centre Ltd.

10 Dai Wang Street, Taipo Industrial Estate, N.T., Hong Kong  
Tel: (852) 2666 1888      Fax: (852) 2664 4353      E-mail: hkstc@hkstc.org      Homepage: www.stc-group.org

This report shall not be reproduced unless with prior written approval from The Hong Kong Standards and Testing Centre Ltd.  
For Conditions of Issuance of this test report, please refer to the overleaf or Homepage

**Please refer to the original test report as this e-report is for reference only!**



## **STC Test Report**

**Date: 2011-08-19**

**Page 20 of 22**

**No.: MH185441**

### **Antenna Requirement**

**Test Requirements: § 15.203**

### **Test Specification:**

An intentional radiator shall be designed to ensure that no antenna other than that furnished by the responsible party shall be used with the device. The use of a permanently attached antenna or of an antenna that uses a unique coupling to the intentional radiator shall be considered sufficient to comply with the provisions of this section. The manufacturer may design the unit so that a broken antenna can be replaced by the user, but the use of a standard antenna jack or electrical connector is prohibited.

### **Test Results:**

The EUT has 2 Dipole Antenna which is connected to the reverse-polarity SMA connector on the PCB of the main unit, the antenna gain = 0.5dBi. All component install on inside of EUT. User unable to remove or changed the Antenna.

**The Hong Kong Standards and Testing Centre Ltd.**

10 Dai Wang Street, Taipo Industrial Estate, N.T., Hong Kong  
Tel: (852) 2666 1888 Fax: (852) 2664 4353 E-mail: hkstc@hkstc.org Homepage: www.stc-group.org

This report shall not be reproduced unless with prior written approval from The Hong Kong Standards and Testing Centre Ltd.  
For Conditions of Issuance of this test report, please refer to the overleaf or Homepage

**Please refer to the original test report as this e-report is for reference only!**



## **STC Test Report**

**Date: 2011-08-19**

**Page 21 of 22**

**No.: MH185441**

### **Appendix C**

#### **Photographs of EUT**

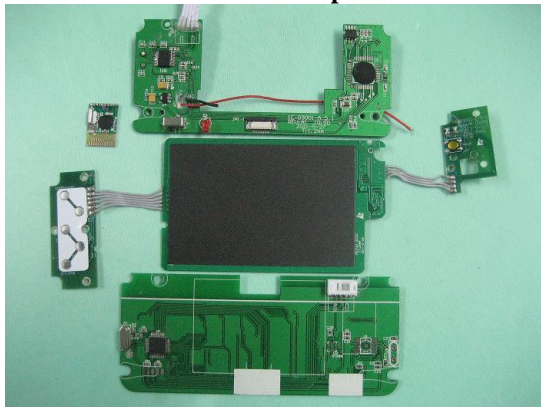
**Front View of the product**



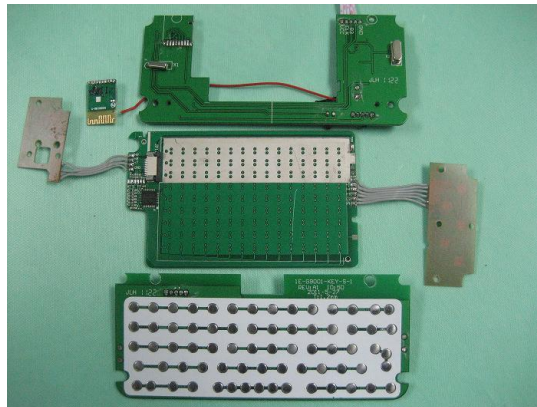
**Rear View of the product**



**Inner Circuit Top View**



**Inner Circuit Bottom View**



**The Hong Kong Standards and Testing Centre Ltd.**

10 Dai Wang Street, Taipo Industrial Estate, N.T., Hong Kong  
Tel: (852) 2666 1888 Fax: (852) 2664 4353 E-mail: [hkstc@hkstc.org](mailto:hkstc@hkstc.org) Homepage: [www.stc-group.org](http://www.stc-group.org)

This report shall not be reproduced unless with prior written approval from The Hong Kong Standards and Testing Centre Ltd.  
For Conditions of Issuance of this test report, please refer to the overleaf or Homepage

**Please refer to the original test report as this e-report is for reference only!**



## **STC Test Report**

**Date: 2011-08-19**

**Page 22 of 22**

**No.: MH185441**

**Photographs of EUT**

**Measurement of Radiated Emission Test Set Up**



**\*\*\*\*\* End of Test Report \*\*\*\*\***

**The Hong Kong Standards and Testing Centre Ltd.**

10 Dai Wang Street, Taipo Industrial Estate, N.T., Hong Kong  
Tel: (852) 2666 1888 Fax: (852) 2664 4353 E-mail: [hkstc@hkstc.org](mailto:hkstc@hkstc.org) Homepage: [www.stc-group.org](http://www.stc-group.org)

This report shall not be reproduced unless with prior written approval from The Hong Kong Standards and Testing Centre Ltd.

For Conditions of Issuance of this test report, please refer to the overleaf or Homepage

**Please refer to the original test report as this e-report is for reference only!**