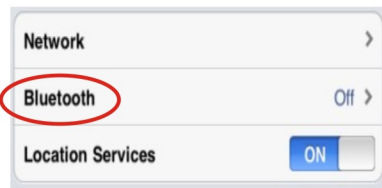
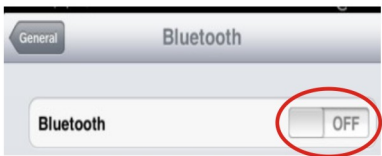


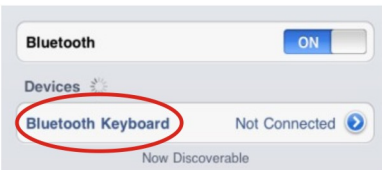
(1) (2)



(3)



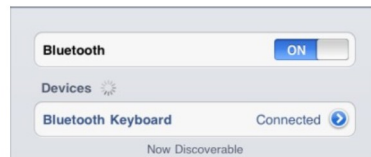
(4)



(5)



(6)



(6)

### Troubleshooting

If the keyboard is not working with the iPad (or other Bluetooth devices) make sure:

- 1) The Bluetooth function on the iPad (or other Bluetooth devices) is enabled.
- 2) The Bluetooth keyboard is within 33feet of the iPad.
- 3) The passkey is entered correctly.
- 4) Restart the computer (or other Bluetooth devices).
- 5) Battery which built-in keyboard in low power station, please recharge it.
- 6) If you by accidently press the CONNECT key when the two devices have been connected, it will cause the malfunction of the keyboard. The LED light of the CONNECT key will keep blinking. To solve this problem, you just simply restart the keyboard by turning it on again. A pairing will not be required if it has been previously done.

### Product Specifications

- 1)Bluetooth Specification: Version 3.0 Class 2
- 2)Range of Frequency: 2.4GHz Spectrum
- 3)Operating Voltage: 3.7Vdc (powered by Li-ion)
- 4)Operation current: <5mA
- 5)Standby Current: 1.0mA
- 6)Sleep current: <0.25mA
- 7)Transmit Range: up to 10 meters

This device complies with Part 15 of the FCC Rules: Operation is subject to the following two conditions:

1. This device may not cause harmful interference and
2. This device must accept any interference that is received, including any interference that may cause undesired operation.

# User' Guide

**Bluetooth Wireless Keyboard**  
K361/K361A/K331/K331A/K331B  
FCC ID:ZH4K361

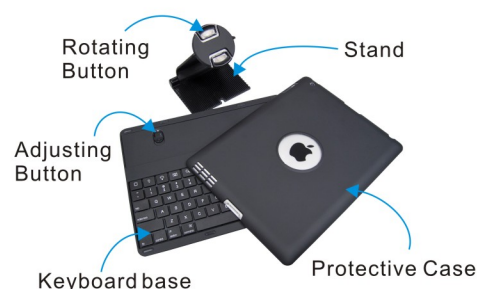


### WARNING:

Changes or modifications to this unit not expressly approved by the party responsible for compliance could void the user's authority to operate the equipment.

**CAUTION:** To use this product properly, please read the user's guide before installation

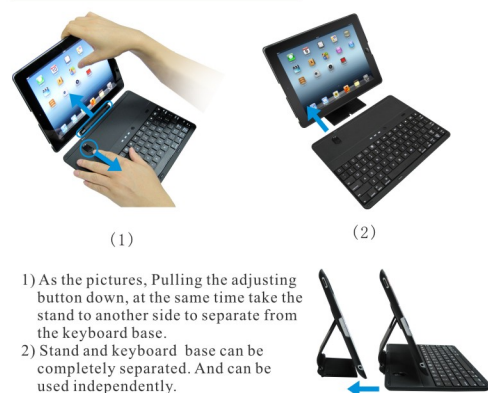
### Schematic diagram



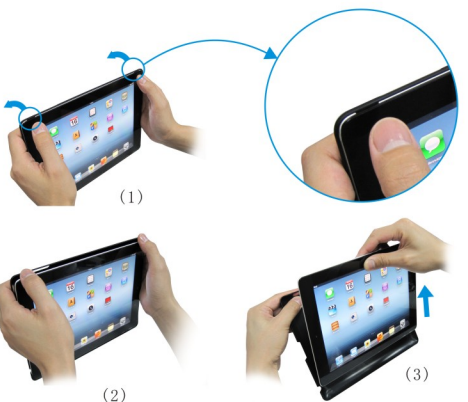
### Using



### Installation and removal

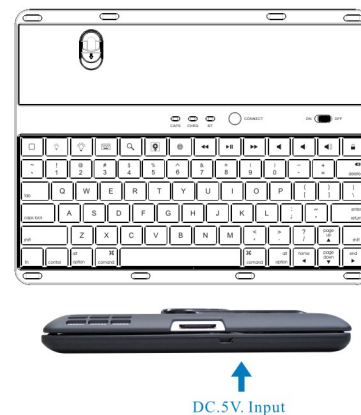


- 1) Open the protective case, press the rotation button with your thumb and forefinger as the above pictures
- 2) Gently remove the case, then it separate from stand.



- 1) iPad upward. Hands caught on both sides and gently push the two horns of the case out side with two thumbs as the above pictures.
- 2) Take the case away, catch iPad. Be careful dropped down.
- 3) Take iPad out upwards.

### Keyboard



### Welcome

Congratulation on selecting the Bluetooth Wireless Keyboard as your input device. The super slim keyboard is very quiet and crafted with the soft touch design. In the present state of artistic technology, this is the ideal product for your iPad/iMac/ iPhone and other Bluetooth enabled device.

### Overview

- Main screen/Esc
  - ◀ PrevTrack
  - ▶ Play/pause
  - ▶ NextTrack
  - ⏏ Mute
  - 🔍 Search
  - 📷 Preview photo
  - 🔊 Volume -
  - 🔊 Volume +
  - 🔒 Lock screen
  - 🌐 Change Language
- The PAGE UP key, PAGE DOWN key, HOME key, and END key work when pressed along with the FN key.

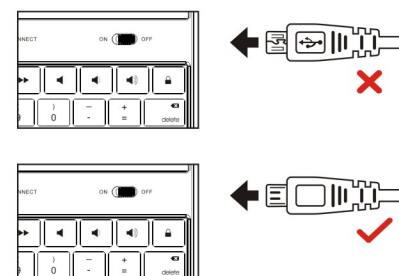
### Prompted

- Blue LED Blinking: Pairing
- Red LED on: Charging
- Green LED on: Battery is fully charged
- Green LED blinking: Low in Battery
- Yellow LED on: Caps lock

### Installation Guide

#### Step 1. Charging the battery

1. For the first time user, Please charge the keyboard for at least 6 hours before using it. Thereafter, charge for at least 2 hours when the battery runs low.
2. The LED blinks green when battery is low. The LED light is green when it is fully charged.
3. Connection Charging Cable



#### How to Charge the battery:

- To charge the keyboard, Connect the 5V.DC input form the keyboard into the computer USB port with the connector cable provided. The Keyboard can function while charging.

#### Step 2. Pairing your Bluetooth Keyboard with your iPad/iMac/ iPhone or other Bluetooth enabled device.

- The following sample shows how to pair the Bluetooth keyboard with your iPad.

1. Before you can use your keyboard, you have to pair it with your iPad. Pairing allows your keyboard to communicate wirelessly with your iPad. You only have to perform the pairing once.
1. Turn on the keyboard and press the CONNECT key on the keyboard. The LED light will blink blue. Then on the screen of the iPad, you search for Settings-->General-->Bluetooth.
2. Enable the Bluetooth function, and it will search for the Bluetooth keyboard automatically. When the Bluetooth keyboard is discovered, select the "Bluetooth keyboard" from the iPad screen, a passkey will appear on the screen of the iPad. Type in the passkey provided and press the ENTER key on the keyboard. Your Bluetooth keyboard will then be successfully paired with your iPad.