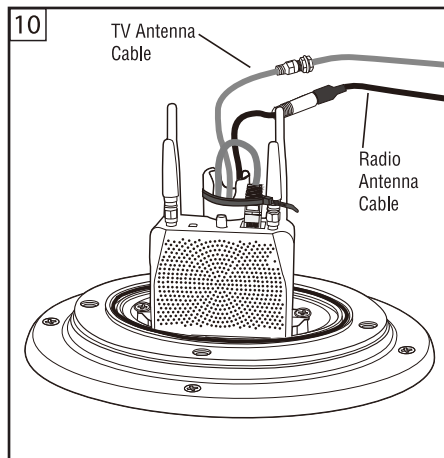


Place RV2402 Roof Repeater into Base in location shown and screw to posts using included screws.

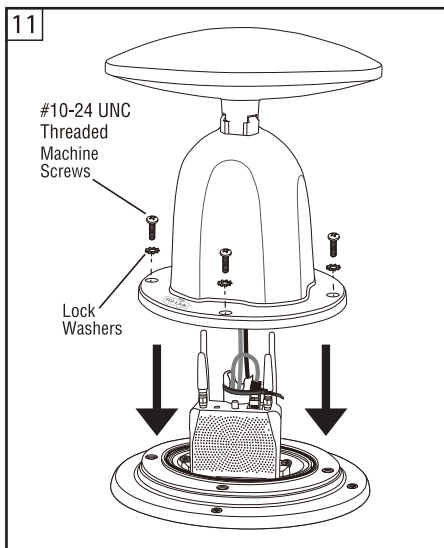
**WARNING**

Use screwdriver and **Hand Tighten** only.



A) Plug Blue Ethernet Cable into RV2402 Roof Repeater unit.

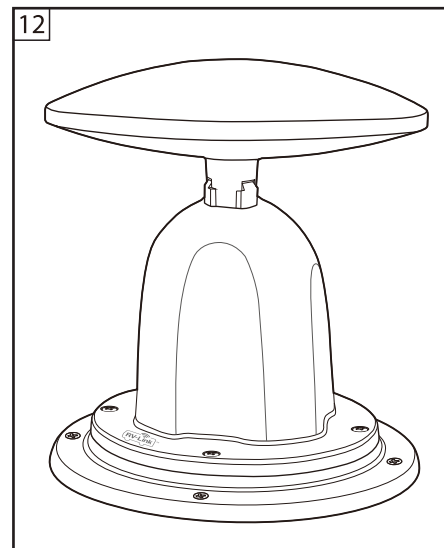
B) Wire-tie Blue Ethernet Cable to center tube of base.



A) Place WiFi Housing back onto Base, make sure Cables fit securely inside Base, are not pinched, and do not interfere with RV2402 antennas.

B) Attach 4 Machine Screws (#10-24 UNC Threaded) and 4 Lock Washers to mount.

**WARNING** - Make sure the O-ring is in place & screws are tight.

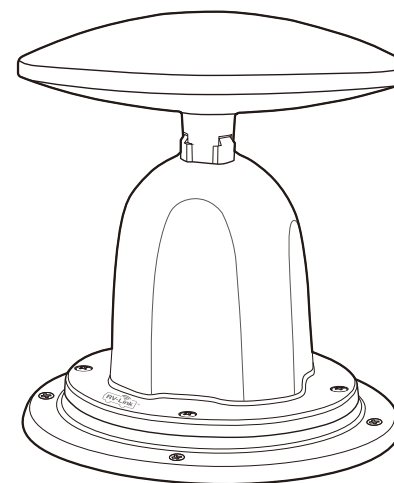


RV2402 Roof Repeater Installation Complete.

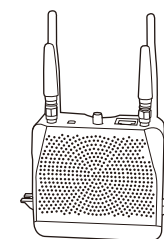
The RV WiFi System is ready for use. Refer to **RV2458 Software Quickstart Guide** for setup.



# WiFi/LTE System Installation Manual



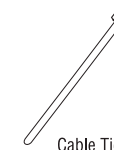
WiFi Antenna Base/Housing



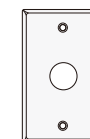
RV2402 Extender



RV2458 Router



Cable Tie



Cover Plate



RV2458 Router Control Unit Screws (2)

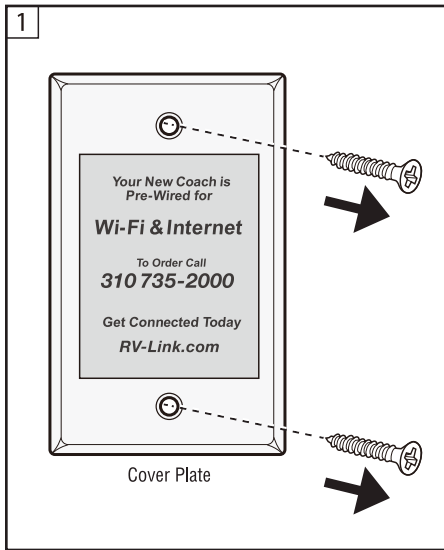


RV2400 Extender Screws (2)

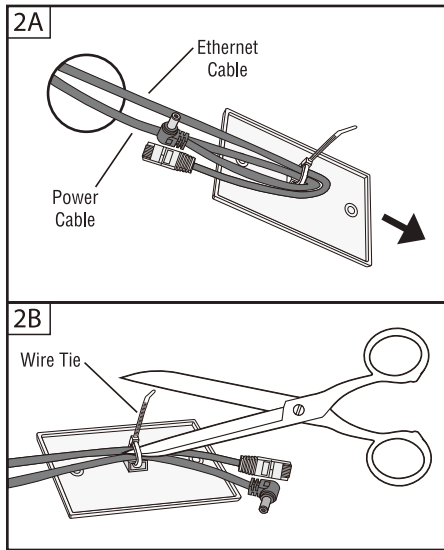


Cover Plate Screws (2)

For Technical Assistance, please call (310) 735-2000, or visit [www.magnadyne.com](http://www.magnadyne.com)

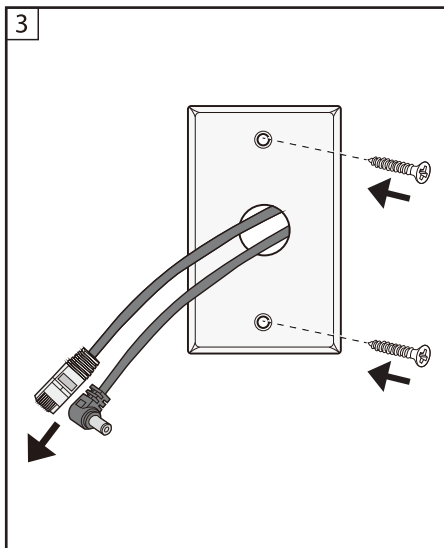


Remove cover plate from wall.



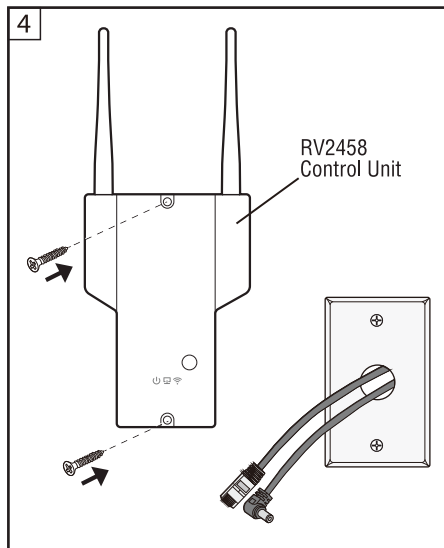
A) Bring Blue Ethernet and Blue Power Cables through the wall.

B) Cut wire-tie & discard cover plate.

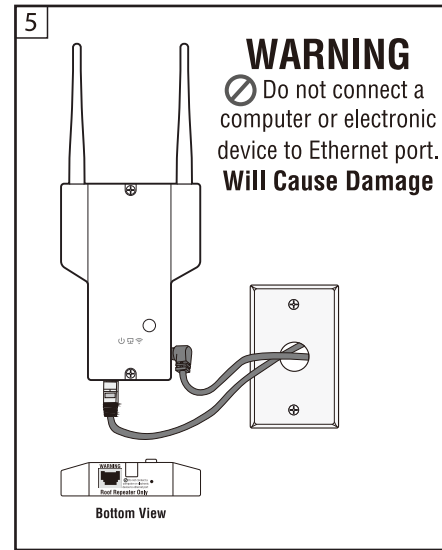


A) Bring Blue Ethernet and Blue Power Cables through center hole of new cover plate.

B) Screw new cover plate to wall using original mounting holes.

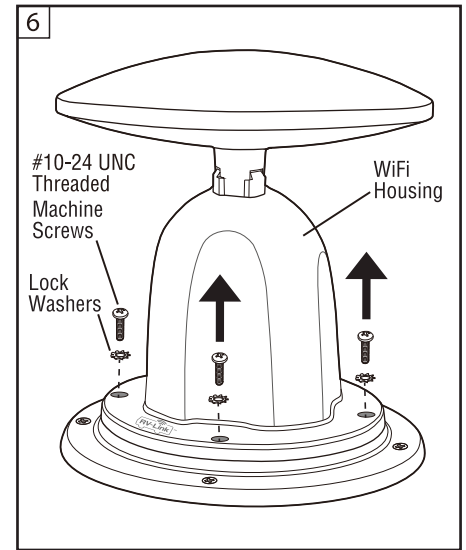


Mount Router Control Unit to wall near the new cover plate as pictured using included screws.

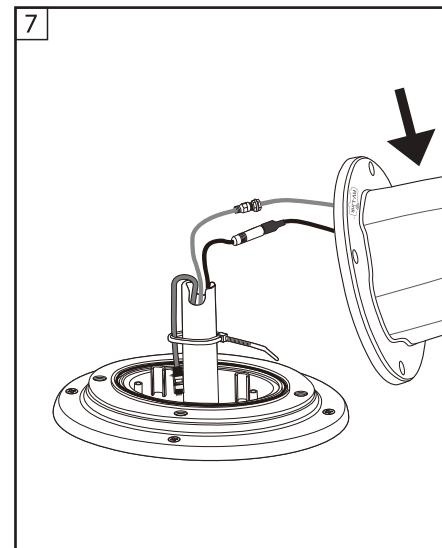


Connect Blue Ethernet and Blue Power Cables to RV2458 Control Unit as pictured.

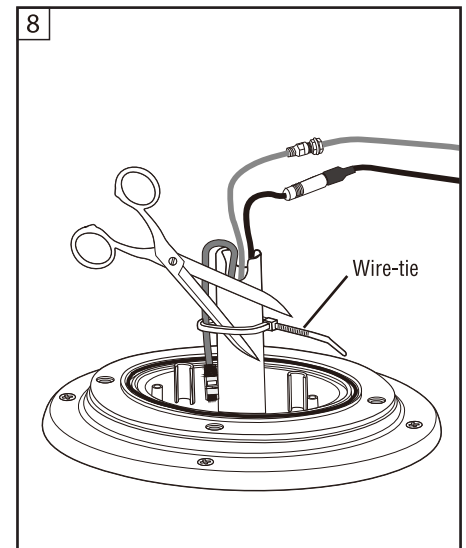
**Router Control Unit & Interior Installation Complete.**



Remove 4 Machine Screws (#10-24 UNC Threaded) and 4 Lock Washers from WiFi Housing on roof.



Set WiFi Housing aside. **DO NOT** extend Cables from roof further than necessary.



Cut Wire-tie from Blue Ethernet Cable connected to the tube.

Any Changes or modifications not expressly approved by the party responsible for compliance could void the user's authority to operate the equipment.

This device complies with Part 15 of the FCC Rules. Operation is subject to the following two conditions:

(1) this device may not cause harmful interference, and (2) this device must accept any interference received, including interference that may cause undesired operation. changes or modifications not expressly approved by the party responsible for compliance could void the user's authority to operate the equipment.

This equipment has been tested and found to comply with the limits for a Class B digital device, pursuant to Part 15 of the FCC Rules.

These limits are designed to provide reasonable protection against harmful interference in a residential installation.

This equipment generates, uses and can radiate radio frequency energy and, if not installed and used in accordance with the instructions, may cause harmful interference to radio communications. However, there is no guarantee that interference will not occur in a particular installation. If this equipment does cause harmful interference to radio or television reception, which can be determined by turning the equipment off and on, the user is encouraged to try to correct the interference by one or more of the following

Measures:

1. Reorient or relocate the receiving antenna.
2. Increase the separation between the equipment and receiver.
3. Connect the equipment into an outlet on a circuit different from that to which the receiver is connected.
4. Consult the dealer or an experienced radio/TV technician for help.

FCC Radiation Exposure Statement:

This equipment complies with FCC radiation exposure limits set forth for an uncontrolled environment .

This transmitter must not be co-located or operating in conjunction with any other antenna or transmitter.

This equipment should be installed and operated with minimum distance 25cm between the radiator & your body.

ISED RSS warning

This device complies with Innovation, Science and Economic Development Canada Compliance licence-exempt RSS standard (s). Operation is subject to the following two conditions: (1) this device may not cause interference, and (2) this device must accept any interference, including interference that may cause undesired operation of the device.

Le présent appareil est conforme aux CNR d'Innovation, Sciences et Développement économique Canada applicables aux appareils radio exempts de licence.

L'exploitation est autorisée aux deux conditions suivantes:

- (1) l'appareil ne doit pas produire de brouillage, et
- (2) l'utilisateur de l'appareil doit accepter tout brouillage radioélectrique subi, même si le brouillage est susceptible d'en compromettre le fonctionnement.

ISED Radiation Exposure Statement:

This equipment complies with ISED RF radiation exposure limits set forth for an uncontrolled environment. This transmitter must not be co-located or operating in conjunction with any other antenna or transmitter. This equipment should be installed and operated with minimum distance 25cm between the radiator & your body.

IC exposition aux radiations:

Cet équipement est conforme avec ISED les limites d'exposition aux rayonnements

définies pour un contrôlé environnement.

Cet émetteur ne doit pas être co-localisés ou fonctionner en conjonction avec une autre antenne ou émetteur.

Cet équipement doit être installé et utilisé avec un minimum de 25 cm de distance entre le radiateur et votre corps.