



Report No.: RZA1104-0497SAR01R1



# OET 65


## TEST REPORT

Product Name	Educational Device (Kineo)
Model	Kineo, K-01
FCC ID	ZGE-KINEO-K-01
Client	Worldex Technology LTD.

**TA Technology (Shanghai) Co., Ltd.**



## GENERAL SUMMARY

<b>Product Name</b>	Educational Device (Kineo)	<b>Model</b>	Kineo, K-01
<b>FCC ID</b>	ZGE-KINEO-K-01	<b>Report No.</b>	RZA1104-0497SAR01R1
<b>Client</b>	Worldex Technology LTD.		
<b>Manufacturer</b>	Worldex Technology Ltd. (Mototech Electronic (DongGuan) Company Ltd.)		
<b>Standard(s)</b>	<p><b>IEEE Std C95.1, 1999:</b> IEEE Standard for Safety Levels with Respect to Human Exposure to Radiofrequency Electromagnetic Fields, 3 KHz to 300 GHz.</p> <p><b>OET Bulletin 65 supplement C, published June 2001 including DA 02-1438, published June 2002:</b> Additional Information for Evaluating Compliance of Mobile and Portable Devices with FCC Limits. Transition Period for the Phantom Requirements of Supplement C to OET Bulletin 65.</p> <p><b>KDB 248227 D01 SAR meas for 802 11 a b g v01r02:</b> SAR Measurement Procedures for 802.11a/b/g Transmitters</p> <p><b>KDB 616217 D03 SAR Supp Note and Netbook Laptop v01:</b> SAR Evaluation Considerations for Laptop/Notebook/Netbook and Tablet Computers - supplement to KDB 616217.</p> <p><b>KDB 447498 D01 Mobile Portable RF Exposure v04:</b> Mobile and Portable Device RF Exposure Procedures and Equipment Authorization Policies</p>		
<b>Conclusion</b>	<p>This portable wireless equipment has been measured in all cases requested by the relevant standards. Test results in Chapter 7 of this test report are below limits specified in the relevant standards.</p> <p>General Judgment:</p> <p style="text-align: center;"><b>Pass</b></p> <p style="text-align: right;">(Stamp) Date of issue: May 9<sup>th</sup>, 2011</p> 		
<b>Comment</b>	The test result only responds to the measured sample.		

Approved by 杨伟中  
Yang Weizhong

Revised by 凌敏宝  
Ling Minbao

Performed by 李嗣远  
Li Siyuan

## TABLE OF CONTENT

1. General Information .....	5
1.1. Notes of the test report .....	5
1.2. Testing laboratory .....	5
1.3. Applicant Information .....	6
1.4. Manufacturer Information .....	6
1.5. Information of EUT .....	7
1.6. The Maximum SAR <sub>1g</sub> Values and Conducted Power of each tested band .....	8
1.7. Test Date .....	8
2. Operational Conditions during Test .....	9
2.1. General description of test procedures .....	9
2.2. Position of module in Portable devices .....	10
3. SAR Measurements System Configuration .....	10
3.1. SAR Measurement Set-up .....	11
3.2. DASY5 E-field Probe System .....	12
3.2.1. EX3DV4 Probe Specification .....	12
3.2.2. E-field Probe Calibration .....	13
3.3. Other Test Equipment .....	13
3.3.1. Device Holder for Transmitters .....	13
3.3.2. Phantom .....	14
3.4. Scanning procedure .....	14
3.5. Data Storage and Evaluation .....	16
3.5.1. Data Storage .....	16
3.5.2. Data Evaluation by SEMCAD .....	16
3.6. System check .....	19
3.7. Equivalent Tissues .....	20
4. Laboratory Environment .....	20
5. Characteristics of the Test .....	21
5.1. Applicable Limit Regulations .....	21
5.2. Applicable Measurement Standards .....	21
6. Conducted Output Power Measurement .....	22
6.1. Summary .....	22
6.2. Conducted Power Results .....	22
7. Test Results .....	24
7.1. Dielectric Performance .....	24
7.2. System Check .....	24
7.3. Summary of Measurement Results .....	25
7.3.1. 802.11b .....	25
8. Measurement Uncertainty .....	26
9. Main Test Instruments .....	27
ANNEX A: Test Layout .....	28

**TA Technology (Shanghai) Co., Ltd.**  
**Test Report**

Report No. RZA1104-0497SAR01R1

Page 4 of 65

---

ANNEX B: System Check Results .....	29
ANNEX C: Graph Results .....	30
ANNEX D: Probe Calibration Certificate .....	36
ANNEX E: D2450V2 Dipole Calibration Certificate .....	47
ANNEX F: DAE4 Calibration Certificate .....	56
ANNEX G: The EUT Appearances .....	61

## **1. General Information**

### **1.1. Notes of the test report**

**TA Technology (Shanghai) Co., Ltd.** guarantees the reliability of the data presented in this test report, which is the results of measurements and tests performed for the items under test on the date and under the conditions stated in this test report and is based on the knowledge and technical facilities available at TA Technology (Shanghai) Co., Ltd. at the time of execution of the test.

**TA Technology (Shanghai) Co., Ltd.** is liable to the client for the maintenance by its personnel of the confidentiality of all information related to the items under test and the results of the test. This report only refers to the item that has undergone the test.

This report standalone dose not constitute or imply by its own an approval of the product by the certification Bodies or competent Authorities. This report cannot be used partially or in full for publicity and/or promotional purposes without previous written approval of **TA Technology (Shanghai) Co., Ltd.** and the Accreditation Bodies, if it applies.

If the electrical report is inconsistent with the printed one, it should be subject to the latter.

### **1.2. Testing laboratory**

Company:	TA Technology (Shanghai) Co., Ltd.
Address:	No.145, Jintang Rd, Tangzhen Industry Park, Pudong Shanghai,China
City:	Shanghai
Post code:	201201
Country:	P. R. China
Contact:	Yang Weizhong
Telephone:	+86-021-50791141/2/3
Fax:	+86-021-50791141/2/3-8000
Website:	<a href="http://www.ta-shanghai.com">http://www.ta-shanghai.com</a>
E-mail:	<a href="mailto:yangweizhong@ta-shanghai.com">yangweizhong@ta-shanghai.com</a>

**TA Technology (Shanghai) Co., Ltd.**  
**Test Report**

Report No. RZA1104-0497SAR01R1

Page 6 of 65

---

### **1.3. Applicant Information**

Company: Worldex Technology LTD.  
Address: Unit 10,9 F., Hing Wai Centre, NO.7 Tin Wan Praya Road, HongKong  
City: HongKong  
Postal Code: /  
Country: P.R. China  
Telephone: 00852 2873 2480  
Fax: 00852 2873 1572

### **1.4. Manufacturer Information**

Company: Worldex Technology Ltd. (Mototech Electronic (DongGuan) Company Ltd.)  
Address: HaKong 4<sup>th</sup> Industrial Zone, Chang An Town, DongGuan City, Guangdong Province, P.R. China.  
City: dongguan  
Postal Code: /  
Country: P.R. China  
Telephone: 0755-27286088  
Fax: 0755-27286268

**TA Technology (Shanghai) Co., Ltd.**  
**Test Report**

Report No. RZA1104-0497SAR01R1

Page 7 of 65

## 1.5. Information of EUT

### General information

Device Type:	Portable Device	
Exposure Category:	Uncontrolled Environment / General Population	
Product Name:	Educational Device (Kineo)	
Antenna Type:	Internal Antenna	
Device Operating Configurations :		
Supporting Mode(s):	802.11b; (tested) 802.11g;	
Test Channel: (Low - Middle - High)	1-6-11 (802.11b/g)	
Operating Frequency Range(s)	Mode	Tx (MHz)
	802.11b/g	2412~2462MHz

# TA Technology (Shanghai) Co., Ltd.

## Test Report

Report No. RZA1104-0497SAR01R1

Page 8 of 65

### Auxiliary equipment details

#### AE1: Battery

Model: 3.7V 4500mAh  
Manufacturer: HKBIL  
S/N: HK-LP6345135

The EUT is a Educational Device (Kineo), under Model name: Kineo, K-01, the device has an internal antenna for WiFi Tx/Rx. SAR is only tested for 802.11b in this report, SAR is not required for 802.11g channels when the maximum average output power is less than 0.25dB higher than that measured on the corresponding 802.11b channels.

The sample under test was selected by the Client.

Components list please refer to documents of the manufacturer.

### 1.6. The Maximum SAR<sub>1g</sub> Values and Conducted Power of each tested band

#### Body Worn Configuration

Mode	Channel	Position	SAR <sub>1g</sub> (W/kg)
802.11b	Middle/6	Test Position 1	<b>0.722</b>

#### The Maximum Power

Mode	Maximum AV Power (dBm)
802.11b	<b>15.71</b>

Note: The detail Power refers to Table 4 (Power Measurement Results).

### 1.7. Test Date

The test is performed from April 21, 2011 to April 22, 2011.



## 2. Operational Conditions during Test

### 2.1. General description of test procedures

For the 802.11b/g SAR body tests, a communication link is set up with the test mode software for WIFI mode test. The Absolute Radiofrequency Channel Number (ARFCN) is allocated to 1, 6 and 11 respectively in the case of 2450 MHz. During the test, at the each test frequency channel, the EUT is operated at the RF continuous emission mode. Each channel should be tested at the lowest data rate.

802.11b/g operating modes are tested independently according to the service requirements in each frequency band. 802.11b/g modes are tested on channels 1, 6, 11; however, if output power reduction is necessary for channels 1 and /or 11 to meet restricted band requirements the highest output channels closest to each of these channels must be tested instead.

SAR is not required for 802.11g channels when the maximum average output power is less than 0.25dB higher than that measured on the corresponding 802.11b channels. When the maximum average output channel in each frequency band is not included in the “default test channels”, the maximum channel should be tested instead of an adjacent “default test channels”, these are referred to as the “required test channels” and are illustrated in table 1.

Then The Absolute Radiofrequency Channel Number (ARFCN) is firstly allocated to 2437 respectively in the case of 802.11b/g.

**Table 1: “Default Test Channels”**

Mode	GHz	Channel	Turbo Channel	“Default Test Channels”			
				15.247		UNII	
				802.11b	802.11g		
802.11b/g	2.412	1 <sup>#</sup>		√	*		
	2.437	6	6	√	*		
	2.462	11 <sup>#</sup>		√	*		

Note: <sup>#</sup>=when output power is reduced for channel 1 and /or 11 to meet restricted band requirements the highest out put channels closet to each of these channels should be tested.

√= “ default test channels”

\* =possible 802.11g channels with maximum average output 0.25dB>=the “default test channels”

## **2.2. Position of module in Portable devices**

For tablets with a display or overall diagonal dimension  $23\text{ cm} > 20\text{ cm}$ , the SAR procedures in KDB 447498 should be used.

According to KDB 447498 D01 Mobile Portable RF Exposure v04 SAR is required for both back and edge with the most conservative exposure conditions, the EUT is tested at the following 5 test positions:

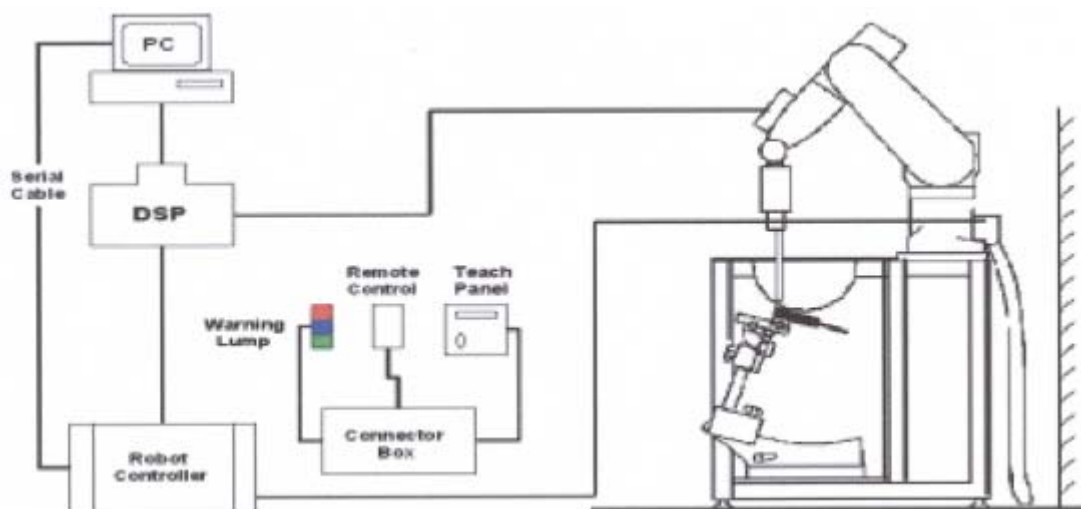
- Test Position 1: The back side of the EUT towards and directed tightly to touch the bottom of the flat phantom. (ANNEX G Picture 4) 0 cm from WiFi antenna-to-user (Please see ANNEX G Picture 3)
- Test Position 2: The top side of the EUT towards and directed tightly to touch the bottom of the flat phantom. (ANNEX G Picture 5) 1.18 cm from WiFi antenna-to-user (Please see ANNEX G Picture 3)
- Test Position 3: The bottom side of the EUT towards and directed tightly to touch the bottom of the flat phantom. (ANNEX G Picture 6) 11.1cm from WiFi antenna-to-user (Please see ANNEX G Picture 3)  
(This is not the most conservative antenna - to - user distance at edge mode. According to KDB 447498 4) ii) (2) –SAR is required only the edge with the most conservative exposure conditions, No SAR)
- Test Position 4: The left side of the EUT towards and directed tightly to touch the bottom of the flat phantom. (ANNEX G Picture 7) 11.7 cm from WiFi antenna-to-user (Please see ANNEX G Picture 3)  
(This is not the most conservative antenna - to - user distance at edge mode. According to KDB 447498 4) ii) (2) –SAR is required only the edge with the most conservative exposure conditions, No SAR)
- Test Position 5: The right side of the EUT towards and directed tightly to touch the bottom of the flat phantom. (ANNEX G Picture 8) 4.82 cm from WiFi antenna-to-user (Please see ANNEX G Picture 3)

### 3. SAR Measurements System Configuration

#### 3.1. SAR Measurement Set-up

The DASY5 system for performing compliance tests consists of the following items:

- A standard high precision 6-axis robot (Stäubli RX family) with controller and software. An arm extension for accommodating the data acquisition electronics (DAE).
- A dosimetric probe, i.e. an isotropic E-field probe optimized and calibrated for usage in tissue simulating liquid. The probe is equipped with an optical surface detector system.
- A data acquisition electronic (DAE) which performs the signal amplification, signal multiplexing, AD-conversion, offset measurements, mechanical surface detection, collision detection, etc. The unit is battery powered with standard or rechargeable batteries. The signal is optically transmitted to the EOC.
- A unit to operate the optical surface detector which is connected to the EOC.
- The Electro-Optical Coupler (EOC) performs the conversion from the optical into a digital electric signal of the DAE. The EOC is connected to the DASY5 measurement server.
- The DASY5 measurement server, which performs all real-time data evaluation for field measurements and surface detection, controls robot movements and handles safety operation. A computer operating Windows 2003
- DASY5 software and SEMCAD data evaluation software.
- Remote control with teach panel and additional circuitry for robot safety such as warning lamps, etc.
- The generic twin phantom enabling the testing of left-hand and right-hand usage.
- The device holder for handheld mobile phones.
- Tissue simulating liquid mixed according to the given recipes.
- System validation dipoles allowing to validate the proper functioning of the system.



**Figure 1 SAR Lab Test Measurement Set-up**

### 3.2. DASY5 E-field Probe System

The SAR measurements were conducted with the dosimetric probe EX3DV4 (manufactured by SPEAG), designed in the classical triangular configuration and optimized for dosimetric evaluation.

#### 3.2.1. EX3DV4 Probe Specification

Construction	Symmetrical design with triangular core Built-in shielding against static charges PEEK enclosure material (resistant to organic solvents, e.g., DGBE)
Calibration	ISO/IEC17025 calibration service available
Frequency	10 MHz to > 6 GHz Linearity: $\pm 0.2$ dB (30 MHz to 6 GHz)
Directivity	$\pm 0.3$ dB in HSL (rotation around probe axis) $\pm 0.5$ dB in tissue material (rotation normal to probe axis)
Dynamic Range	10 $\mu$ W/g to > 100 mW/g Linearity: $\pm 0.2$ dB (noise: typically < 1 $\mu$ W/g)
Dimensions	Overall length: 330 mm (Tip: 20 mm) Tip diameter: 2.5 mm (Body: 12 mm) Typical distance from probe tip to dipole centers: 1 mm
Application	High precision dosimetric measurements in any exposure scenario (e.g., very strong gradient fields). Only probe which enables compliance testing for frequencies up to 6 GHz with precision of better 30%.



Figure 2. EX3DV4 E-field Probe



Figure 3. EX3DV4 E-field probe

### 3.2.2. E-field Probe Calibration

Each probe is calibrated according to a dosimetric assessment procedure with accuracy better than  $\pm 10\%$ . The spherical isotropy was evaluated and found to be better than  $\pm 0.25\text{dB}$ . The sensitivity parameters (NormX, NormY, NormZ), the diode compression parameter (DCP) and the conversion factor (ConvF) of the probe are tested.

The free space E-field from amplified probe outputs is determined in a test chamber. This is performed in a TEM cell for frequencies below 1 GHz, and in a wave guide above 1 GHz for free space. For the free space calibration, the probe is placed in the volumetric center of the cavity and at the proper orientation with the field. The probe is then rotated 360 degrees.

E-field temperature correlation calibration is performed in a flat phantom filled with the appropriate simulated brain tissue. The measured free space E-field in the medium correlates to temperature rise in a dielectric medium. For temperature correlation calibration a RF transparent thermistor-based temperature probe is used in conjunction with the E-field probe.

$$\text{SAR} = C \frac{\Delta T}{\Delta t}$$

Where:  $\Delta t$  = Exposure time (30 seconds),

C = Heat capacity of tissue (brain or muscle),

$\Delta T$  = Temperature increase due to RF exposure.

Or

$$\text{SAR} = \frac{|E|^2 \sigma}{\rho}$$

Where:

$\sigma$  = Simulated tissue conductivity,

$\rho$  = Tissue density ( $\text{kg/m}^3$ ).

### 3.3. Other Test Equipment

#### 3.3.1. Device Holder for Transmitters

**Construction:** Simple but effective and easy-to-use extension for Mounting Device that facilitates the testing of larger devices according to IEC 62209-2 (e.g., laptops, cameras, etc.) It is lightweight and fits easily on the upper part of the Mounting Device in place of the phone positioner. The extension is fully compatible with the Twin SAM, ELI4 and SAM v6.0 Phantoms.

**Material:** POM, Acrylic glass, Foam

### 3.3.2. Phantom

The shell corresponds to the specifications of the Specific Anthropomorphic Mannequin (Oval Flat) phantom defined in IEEE 1528-2003, CENELEC 50361 and IEC 62209. It enables the dosimetric evaluation of wireless portable device usage as well as body mounted usage at the flat phantom region. A cover prevents evaporation of the liquid. Reference markings on the phantom allow the complete setup of all predefined phantom positions and measurement grids by manually teaching three points with the robot.

Shell Thickness  $2 \pm 0.2$  mm

Filling Volume Approx. 30 liters

Dimensions 190×600×400 mm (H×L×W)



**Figure 4.ELI4 Phantom**

### 3.4. Scanning procedure

The DASY5 installation includes predefined files with recommended procedures for measurements and validation. They are read-only document files and destined as fully defined but unmeasured masks. All test positions (head or body-worn) are tested with the same configuration of test steps differing only in the grid definition for the different test positions.

- The "reference" and "drift" measurements are located at the beginning and end of the batch process. They measure the field drift at one single point in the liquid over the complete procedure. The indicated drift is mainly the variation of the DUT's output power and should vary max.  $\pm 5\%$ .
- The "surface check" measurement tests the optical surface detection system of the DASY5 system by repeatedly detecting the surface with the optical and mechanical surface detector and comparing the results. The output gives the detecting heights of both systems, the difference between the two systems and the standard deviation of the detection repeatability. Air bubbles or refraction in the liquid due to separation of the sugar-water mixture gives poor repeatability (above  $\pm 0.1$ mm). To prevent wrong results tests are only executed when the liquid is free of air bubbles. The difference between the optical surface detection and the actual surface depends on the probe and is specified with each probe. (It does not depend on the surface reflectivity or the probe angle to the surface within  $\pm 30^\circ$ .)
- Area Scan  
The Area Scan is used as a fast scan in two dimensions to find the area of high field values

# TA Technology (Shanghai) Co., Ltd.

## Test Report

Report No. RZA1104-0497SAR01R1

Page 15 of 65

before running a detailed measurement around the hot spot. Before starting the area scan a grid spacing of 15 mm x 15 mm is set. During the scan the distance of the probe to the phantom remains unchanged.

After finishing area scan, the field maxima within a range of 2 dB will be ascertained.

- Zoom Scan

Zoom Scans are used to estimate the peak spatial SAR values within a cubic averaging volume containing 1 g and 10 g of simulated tissue. The default Zoom Scan is done by 7x7x7 points within a cube whose base is centered around the maxima found in the preceding area scan.

- Spatial Peak Detection

The procedure for spatial peak SAR evaluation has been implemented and can determine values of masses of 1g and 10g, as well as for user-specific masses. The DASY5 system allows evaluations that combine measured data and robot positions, such as:

- maximum search
- extrapolation
- boundary correction
- peak search for averaged SAR

During a maximum search, global and local maxima searches are automatically performed in 2-D after each Area Scan measurement with at least 6 measurement points. It is based on the evaluation of the local SAR gradient calculated by the Quadratic Shepard's method. The algorithm will find the global maximum and all local maxima within -2 dB of the global maxima for all SAR distributions.

Extrapolation routines are used to obtain SAR values between the lowest measurement points and the inner phantom surface. The extrapolation distance is determined by the surface detection distance and the probe sensor offset. Several measurements at different distances are necessary for the extrapolation. Extrapolation routines require at least 10 measurement points in 3-D space. They are used in the Zoom Scan to obtain SAR values between the lowest measurement points and the inner phantom surface. The routine uses the modified Quadratic Shepard's method for extrapolation. For a grid using 7x7x7 measurement points with 5mm resolution amounting to 343 measurement points, the uncertainty of the extrapolation routines is less than 1% for 1g and 10g cubes.

- A Z-axis scan measures the total SAR value at the x-and y-position of the maximum SAR value found during the cube 7x7x7 scan. The probe is moved away in z-direction from the bottom of the SAM phantom in 5mm steps.

### **3.5. Data Storage and Evaluation**

#### **3.5.1. Data Storage**

The DASY5 software stores the acquired data from the data acquisition electronics as raw data (in microvolt readings from the probe sensors), together with all necessary software parameters for the data evaluation (probe calibration data, liquid parameters and device frequency and modulation data) in measurement files with the extension ".DA4". The software evaluates the desired unit and format for output each time the data is visualized or exported. This allows verification of the complete software setup even after the measurement and allows correction of incorrect parameter settings. For example, if a measurement has been performed with a wrong crest factor parameter in the device setup, the parameter can be corrected afterwards and the data can be re-evaluated.

The measured data can be visualized or exported in different units or formats, depending on the selected probe type ([V/m], [A/m], [°C], [mW/g], [mW/cm²], [dBrel], etc.). Some of these units are not available in certain situations or show meaningless results, e.g., a SAR output in a lossless media will always be zero. Raw data can also be exported to perform the evaluation with other software packages.

#### **3.5.2. Data Evaluation by SEMCAD**

The SEMCAD software automatically executes the following procedures to calculate the field units from the microvolt readings at the probe connector. The parameters used in the evaluation are stored in the configuration modules of the software:

Probe parameters:	- Sensitivity	Normi, $a_{i0}$ , $a_{i1}$ , $a_{i2}$
	- Conversion factor	ConvF <sub>i</sub>
	- Diode compression point	Dcp <sub>i</sub>
Device parameters:	- Frequency	f
	- Crest factor	cf
Media parameters:	- Conductivity	
	- Density	

These parameters must be set correctly in the software. They can be found in the component documents or they can be imported into the software from the configuration files issued for the DASY5 components. In the direct measuring mode of the multimeter option, the parameters of the actual system setup are used. In the scan visualization and export modes, the parameters stored in the corresponding document files are used.

The first step of the evaluation is a linearization of the filtered input signal to account for the compression characteristics of the detector diode. The compensation depends on the input signal, the diode type and the DC-transmission factor from the diode to the evaluation electronics.



# TA Technology (Shanghai) Co., Ltd.

## Test Report

Report No. RZA1104-0497SAR01R1

Page 17 of 65

If the exciting field is pulsed, the crest factor of the signal must be known to correctly compensate for peak power. The formula for each channel can be given as:

$$V_i = U_i + U_i^2 \cdot c f / d c p_i$$

With  $V_i$  = compensated signal of channel i (i = x, y, z)

$U_i$  = input signal of channel i (i = x, y, z)

$cf$  = crest factor of exciting field (DASY parameter)

$dcp_i$  = diode compression point (DASY parameter)

From the compensated input signals the primary field data for each channel can be evaluated:

E-field probes:  $E_i = (V_i / Norm_i \cdot ConvF)^{1/2}$

H-field probes:  $H_i = (V_i)^{1/2} \cdot (a_{i0} + a_{i1}f + a_{i2}f^2) / f$

With  $V_i$  = compensated signal of channel i (i = x, y, z)

$Norm_i$  = sensor sensitivity of channel i (i = x, y, z)  
[mV/(V/m)<sup>2</sup>] for E-field Probes

$ConvF$  = sensitivity enhancement in solution

$a_{ij}$  = sensor sensitivity factors for H-field probes

$f$  = carrier frequency [GHz]

$E_i$  = electric field strength of channel i in V/m

$H_i$  = magnetic field strength of channel i in A/m

The RSS value of the field components gives the total field strength (Hermitian magnitude):

$$E_{tot} = (E_x^2 + E_y^2 + E_z^2)^{1/2}$$

The primary field data are used to calculate the derived field units.

$$SAR = (E_{tot}^2 \cdot \dots) / (\dots \cdot 1000)$$

**TA Technology (Shanghai) Co., Ltd.**  
**Test Report**

Report No. RZA1104-0497SAR01R1

Page 18 of 65

with **SAR** = local specific absorption rate in mW/g

**$E_{tot}$**  = total field strength in V/m

**$\sigma$**  = conductivity in [mho/m] or [Siemens/m]

**$\rho$**  = equivalent tissue density in g/cm<sup>3</sup>

Note that the density is normally set to 1 (or 1.06), to account for actual brain density rather than the density of the simulation liquid. The power flow density is calculated assuming the excitation field to be a free space field.

$$P_{pwe} = E_{tot}^2 / 3770 \quad \text{or} \quad P_{pwe} = H_{tot}^2 \cdot 37.7$$

with  **$P_{pwe}$**  = equivalent power density of a plane wave in mW/cm<sup>2</sup>

**$E_{tot}$**  = total electric field strength in V/m

**$H_{tot}$**  = total magnetic field strength in A/m

### 3.6. System check

The manufacturer calibrates the probes annually. Dielectric parameters of the tissue simulates were measured every day using the dielectric probe kit and the network analyzer. A system check measurement was made following the determination of the dielectric parameters of the simulates, using the dipole validation kit. A power level of 250 mW was supplied to the dipole antenna, which was placed under the flat section of the twin SAM phantom. The system check results (dielectric parameters and SAR values) are given in the Table 6.

System check results have to be equal or near the values determined during dipole calibration with the relevant liquids and test system ( $\pm 10\%$ ).

System check is performed regularly on all frequency bands where tests are performed with the DASY5 system.

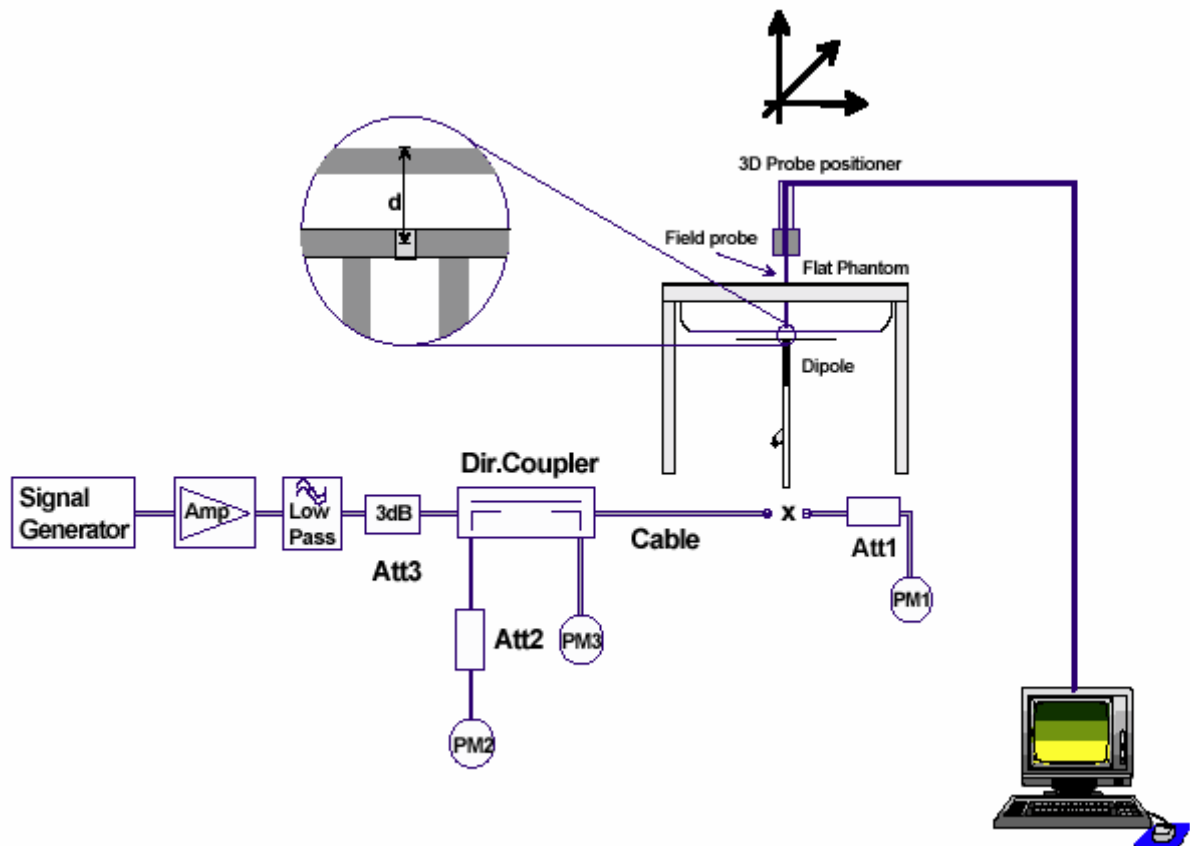


Figure 5 System Check Set-up

**TA Technology (Shanghai) Co., Ltd.**  
**Test Report**

Report No. RZA1104-0497SAR01R1

Page 20 of 65

### 3.7. Equivalent Tissues

The liquid is consisted of water, salt and Glycol. The liquid has previously been proven to be suited for worst-case. The Table 2 shows the detail solution. It's satisfying the latest tissue dielectric parameters requirements proposed by the OET 65.

**Table 2: Composition of the Body Tissue Equivalent Matter**

MIXTURE%	FREQUENCY 2450MHz
Water	73.2
Glycol	26.7
Salt	0.1
Dielectric Parameters Target Value	f=2450MHz $\epsilon=52.70$ $\sigma=1.95$

## 4. Laboratory Environment

**Table 3: The Ambient Conditions during Test**

Temperature	Min. = 20°C, Max. = 25 °C
Relative humidity	Min. = 30%, Max. = 70%
Ground system resistance	< 0.5 $\Omega$
Ambient noise is checked and found very low and in compliance with requirement of standards. Reflection of surrounding objects is minimized and in compliance with requirement of standards.	

## **5. Characteristics of the Test**

### **5.1. Applicable Limit Regulations**

**IEEE Std C95.1, 1999:** IEEE Standard for Safety Levels with Respect to Human Exposure to Radiofrequency Electromagnetic Fields, 3 KHz to 300 GHz.

### **5.2. Applicable Measurement Standards**

**OET Bulletin 65 supplement C, published June 2001 including DA 02-1438, published June 2002:** Additional Information for Evaluating Compliance of Mobile and Portable Devices with FCC Limits. Transition Period for the Phantom Requirements of Supplement C to OET Bulletin 65.

**KDB 248227 D01 SAR meas for 802.11 a b g V01R02:** SAR Measurement Procedures for 802.11a/b/g Transmitters

**KDB 616217 D03 SAR Supp Note and Netbook Laptop v01:** SAR Evaluation Considerations for Laptop/Notebook/Netbook and Tablet Computers – Supplement to KDB 616217

**KDB 447498 D01 Mobile Portable RF Exposure v04:** Mobile and Portable Device RF Exposure Procedures and Equipment Authorization Policies

# TA Technology (Shanghai) Co., Ltd.

## Test Report

Report No. RZA1104-0497SAR01R1

Page 22 of 65

## 6. Conducted Output Power Measurement

### 6.1. Summary

The following procedures had been used to prepare the EUT for the SAR test. The client provided a special driver and program, which enable engineer to control the frequency and output power of the module.

### 6.2. Conducted Power Results

Table 4: Conducted Power Measurement Results

Mode	Channel	Data rate (Mbps)	AV Power (dBm)	PK Power (dBm)
802.11b	1	1	15.71	21.56
		2	15.26	21.11
		5.5	15.51	21.12
		11	15.63	21.89
	6	1	15.67	21.01
		2	15.65	20.98
		5.5	15.59	21.21
		11	15.66	21.75
	11	1	15.24	20.98
		2	15.20	20.63
		5.5	14.69	20.78
		11	14.96	21.07
802.11g	1	6	15.14	22.69
		9	15.04	22.45
		12	15.10	22.41
		18	14.56	22.01
		24	14.21	21.35
		36	14.23	21.87
		48	14.21	21.69
		54	14.74	21.63
	6	6	15.05	22.75
		9	14.95	22.43
		12	14.75	22.32
		18	14.67	21.98
		24	14.33	21.44
		36	14.81	21.66
		48	14.12	21.44
		54	14.36	21.55
	11	6	14.54	22.04
		9	14.12	21.56

**TA Technology (Shanghai) Co., Ltd.**  
**Test Report**

Report No. RZA1104-0497SAR01R1

Page 23 of 65

		12	14.21	21.98
		18	14.10	21.42
		24	14.10	21.06
		36	14.01	21.23
		48	14.02	21.03
		54	13.92	21.03

Note: 1. KDB 248227-SAR is not required for 802.11g channels when the maximum average output power is less than ¼ dB higher than measured on the corresponding 802.11b channels.

# TA Technology (Shanghai) Co., Ltd.

## Test Report

Report No. RZA1104-0497SAR01R1

Page 24 of 65

## 7. Test Results

### 7.1. Dielectric Performance

Table 5: Dielectric Performance of Body Tissue Simulating Liquid

Frequency	Description	Dielectric Parameters		Temp ℃
		$\epsilon_r$	$\sigma(\text{s/m})$	
2450MHz (body)	Target value	52.70	1.95	/
	±5% window	50.07 — 55.34	1.85 — 2.05	
	Measurement value 2011-4-21	51.73	1.97	21.9

### 7.2. System Check

Table 6: System Check for Body Tissue simulating liquid

Frequency	Description	SAR(W/kg)		Dielectric Parameters		Temp ℃
		10g	1g	$\epsilon_r$	$\sigma(\text{s/m})$	
2450MHz	Recommended value	5.97	13	51.8	2.01	/
	±10% window	5.37 — 6.57	11.7 — 14.3			
	Measurement value 2011-4-21	6.06	14.00	51.73	1.97	21.9

Note: 1. The graph results see ANNEX B.

2. Recommended Values used derive from the calibration certificate and 250 mW is used as feeding power to the calibrated dipole.



# TA Technology (Shanghai) Co., Ltd.

## Test Report

Report No. RZA1104-0497SAR01R1

Page 25 of 65

### 7.3. Summary of Measurement Results

#### 7.3.1. 802.11b

Table 7: SAR Values (802.11b)

Limit of SAR (W/kg)		10 g Average	1 g Average	Power Drift (dB)	Graph Results
		2.0	1.6	± 0.21	
Different Test Position	Channel	Measurement Result(W/kg)		Power Drift(dB)	
		10 g Average	1 g Average		
Test Position 1	High/11	0.246	0.647	-0.083	Figure 7
	Middle/6	0.280	0.722	0.063	Figure 8
	Low/1	0.174	0.449	-0.025	Figure 9
Test Position 2	Middle/6	0.038	0.080	-0.090	Figure 10
Test Position 3	/	/	/	/	/
Test Position 4	/	/	/	/	/
Test Position 5	Middle/6	0.009	0.020	0.054	Figure 11

Note: 1. The value with blue color is the maximum SAR Value of each test band.

- The SAR test shall be performed at the high, middle and low frequency channels of each operating mode. If the SAR measured at mid-band channel for each test configuration is at least 3.0 dB (< 0.8W/kg) lower than the SAR limit, testing at the high and low channels is optional.
- Upper and lower frequencies were measured at the worst case.
- KDB 248227-SAR is not required for 802.11g channels when the maximum average output power is less than ¼ dB higher than measured on the corresponding 802.11b channels.

# TA Technology (Shanghai) Co., Ltd.

## Test Report

Report No. RZA1104-0497SAR01R1

Page 26 of 65

### 8. Measurement Uncertainty

No.	source	Type	Uncertainty Value (%)	Probability Distribution	k	c <sub>i</sub>	Standard uncertainty $u_i$ (%)	Degree of freedom $V_{eff}$ or $V_i$
1	System repetivity	A	0.5	N	1	1	0.5	9
Measurement system								
2	-probe calibration	B	5.9	N	1	1	5.9	$\infty$
3	-axial isotropy of the probe	B	4.7	R	$\sqrt{3}$	$\sqrt{0.5}$	1.9	$\infty$
4	- Hemispherical isotropy of the probe	B	9.4	R	$\sqrt{3}$	$\sqrt{0.5}$	3.9	$\infty$
6	-boundary effect	B	1.9	R	$\sqrt{3}$	1	1.1	$\infty$
7	-probe linearity	B	4.7	R	$\sqrt{3}$	1	2.7	$\infty$
8	- System detection limits	B	1.0	R	$\sqrt{3}$	1	0.6	$\infty$
9	-readout Electronics	B	1.0	N	1	1	1.0	$\infty$
10	-response time	B	0	R	$\sqrt{3}$	1	0	$\infty$
11	-integration time	B	4.32	R	$\sqrt{3}$	1	2.5	$\infty$
12	-noise	B	0	R	$\sqrt{3}$	1	0	$\infty$
13	-RF Ambient Conditions	B	3	R	$\sqrt{3}$	1	1.73	$\infty$
14	-Probe Positioner Mechanical Tolerance	B	0.4	R	$\sqrt{3}$	1	0.2	$\infty$
15	-Probe Positioning with respect to Phantom Shell	B	2.9	R	$\sqrt{3}$	1	1.7	$\infty$
16	-Extrapolation, interpolation and Integration Algorithms for Max. SAR Evaluation	B	3.9	R	$\sqrt{3}$	1	2.3	$\infty$
Test sample Related								
17	-Test Sample Positioning	A	2.9	N	1	1	4.92	71
18	-Device Holder Uncertainty	A	4.1	N	1	1	4.1	5
19	-Output Power Variation - SAR drift measurement	B	5.0	R	$\sqrt{3}$	1	2.9	$\infty$
Physical parameter								
20	-phantom	B	4.0	R	$\sqrt{3}$	1	2.3	$\infty$

# TA Technology (Shanghai) Co., Ltd.

## Test Report

Report No. RZA1104-0497SAR01R1

Page 27 of 65

21	-liquid conductivity (deviation from target)	B	5.0	R	$\sqrt{3}$	0.64	1.8	$\infty$
22	-liquid conductivity (measurement uncertainty)	B	0.77	N	1	0.64	0.493	9
23	-liquid permittivity (deviation from target)	B	5.0	R	$\sqrt{3}$	0.6	1.7	$\infty$
24	-liquid permittivity (measurement uncertainty)	B	0.29	N	1	0.6	0.174	9
Combined standard uncertainty		$u_c = \sqrt{\sum_{i=1}^{21} c_i^2 u_i^2}$					11.36	
Expanded uncertainty (confidence interval of 95 %)		$u_e = 2u_c$		N	k=2		22.72	

## 9. Main Test Instruments

Table 8: List of Main Instruments

No.	Name	Type	Serial Number	Calibration Date	Valid Period
01	Network analyzer	Agilent 8753E	US37390326	September 13, 2010	One year
02	Dielectric Probe Kit	Agilent 85070E	US44020115	No Calibration Requested	
03	Power meter	Agilent E4417A	GB41291714	March 12, 2011	One year
04	Power sensor	Agilent N8481H	MY50350004	September 26, 2010	One year
05	Signal Generator	HP 8341B	2730A00804	September 13, 2010	One year
06	Amplifier	IXA-020	0401	No Calibration Requested	
07	E-field Probe	EX3DV4	3677	November 24, 2010	One year
08	DAE	DAE4	871	November 18, 2010	One year
09	Validation Kit 2450MHz	D2450V2	712	February 19, 2010	Two years

**Note:** Per KDB 450824 D02 requirements for dipole calibration, TA has adopted two year calibration intervals, on annual basis; each measurement dipole has been evaluated and is in compliance with the following criteria:

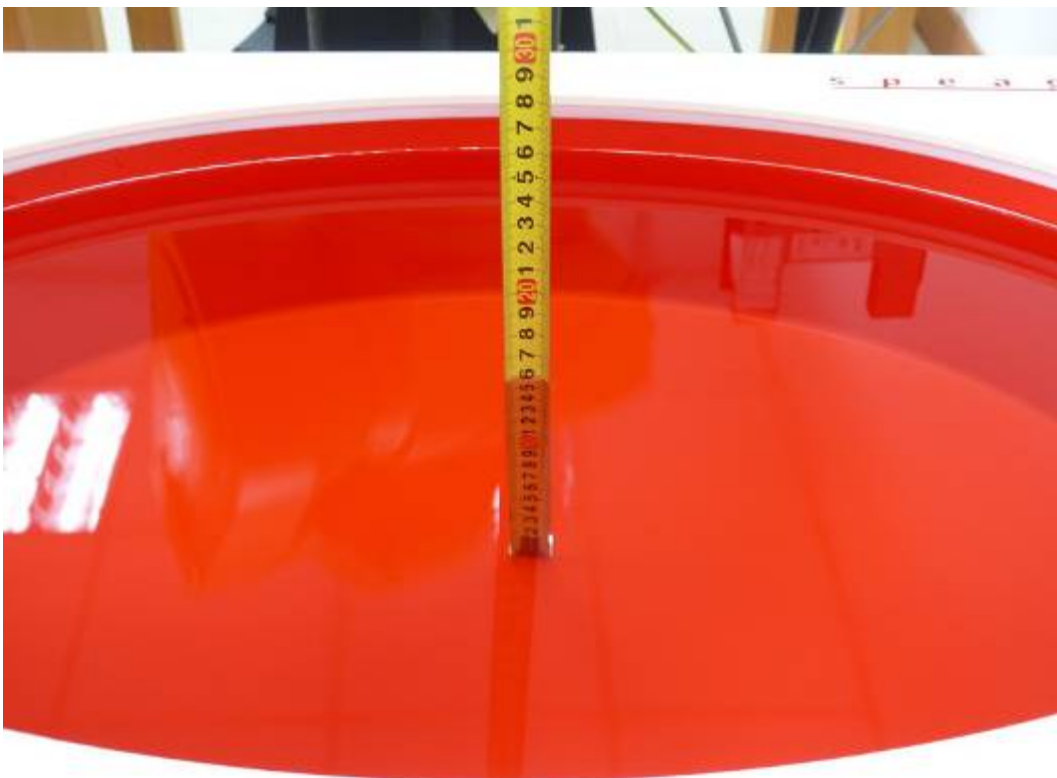
1. There is no physical damage on the dipole.
2. System validation with specific dipole is within 10% of calibrated value.
3. Return-loss is within 20% of calibrated measurement (test data on file in verification report).
4. Impedance is within  $5 \Omega$  of calibrated measurement (test data on file in verification report).

\*\*\*\*\*END OF REPORT BODY\*\*\*\*\*

## ANNEX A: Test Layout



Picture 1: Specific Absorption Rate Test Layout



Picture 2: Liquid depth in the flat Phantom (2450 MHz, 15.2cm depth)

## ANNEX B: System Check Results

### System Performance Check at 2450 MHz

**DUT: Dipole 2450 MHz; Type: D2450V2; Serial: D2450V2 - SN: 712**

Date/Time: 4/21/2011 6:20:36 PM

Communication System: CW; Frequency: 2450 MHz; Duty Cycle: 1:1

Medium parameters used:  $f = 2450$  MHz;  $\sigma = 1.97$  mho/m;  $\epsilon_r = 51.73$ ;  $\rho = 1000$  kg/m<sup>3</sup>

Ambient Temperature: 22.3 °C      Liquid Temperature: 21.9 °C

Phantom section: Flat Section

DASY5 Configuration:

Probe: EX3DV4 - SN3677; ConvF(7.46, 7.46, 7.46); Calibrated: 11/24/2010

Electronics: DAE4 Sn871; Calibrated: 11/18/2010

Phantom: ELI 4.0; Type: QDOVA001BA;

Measurement SW: DASY5, V5.0 Build 120; SEMCAD X Version 13.4 Build 45

**d=10mm, Pin=250mW/Area Scan (71x71x1):** Measurement grid: dx=15mm, dy=15mm

Maximum value of SAR (interpolated) = 21.5 mW/g

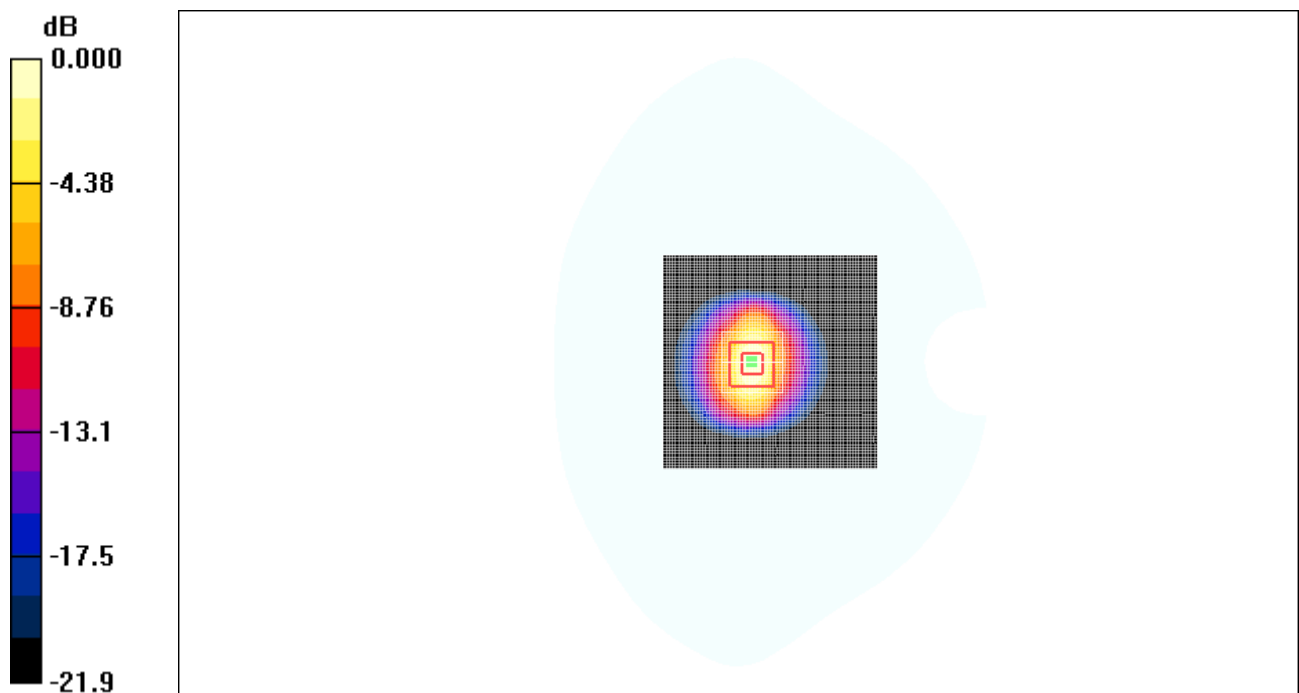
**d=10mm, Pin=250mW/Zoom Scan (7x7x7)/Cube 0:** Measurement grid: dx=5mm, dy=5mm, dz=5mm

Reference Value = 71.0 V/m; Power Drift = 0.011 dB

Peak SAR (extrapolated) = 28.2 W/kg

**SAR(1 g) = 14.0 mW/g; SAR(10 g) = 6.06 mW/g**

Maximum value of SAR (measured) = 19.8 mW/g



0 dB = 19.8mW/g

**Figure 6 System Performance Check 2450MHz 250mW**

## ANNEX C: Graph Results

### 802.11b Test Position 1 High

Date/Time: 4/22/2011 12:27:26 PM

Communication System: 802.11b; Frequency: 2462 MHz; Duty Cycle: 1:1

Medium parameters used:  $f = 2462$  MHz;  $\sigma = 1.98$  mho/m;  $\epsilon_r = 51.7$ ;  $\rho = 1000$  kg/m<sup>3</sup>

Ambient Temperature: 22.3 °C      Liquid Temperature: 21.5 °C

Phantom section: Flat Section

DASY5 Configuration:

Probe: EX3DV4 - SN3677; ConvF(7.46, 7.46, 7.46); Calibrated: 11/24/2010

Electronics: DAE4 Sn871; Calibrated: 11/18/2010

Phantom: ELI 4.0; Type: QDOVA001BA;

Measurement SW: DASY5, V5.0 Build 120; SEMCAD X Version 13.4 Build 45

**Test Position 1 High/Area Scan (81x121x1):** Measurement grid: dx=15mm, dy=15mm

Maximum value of SAR (interpolated) = 0.710 mW/g

**Test Position 1 High/Zoom Scan (7x7x7)/Cube 0:** Measurement grid: dx=5mm, dy=5mm, dz=5mm

Reference Value = 0.886 V/m; Power Drift = -0.083 dB

Peak SAR (extrapolated) = 1.53 W/kg

**SAR(1 g) = 0.647 mW/g; SAR(10 g) = 0.246 mW/g**

Maximum value of SAR (measured) = 0.574 mW/g

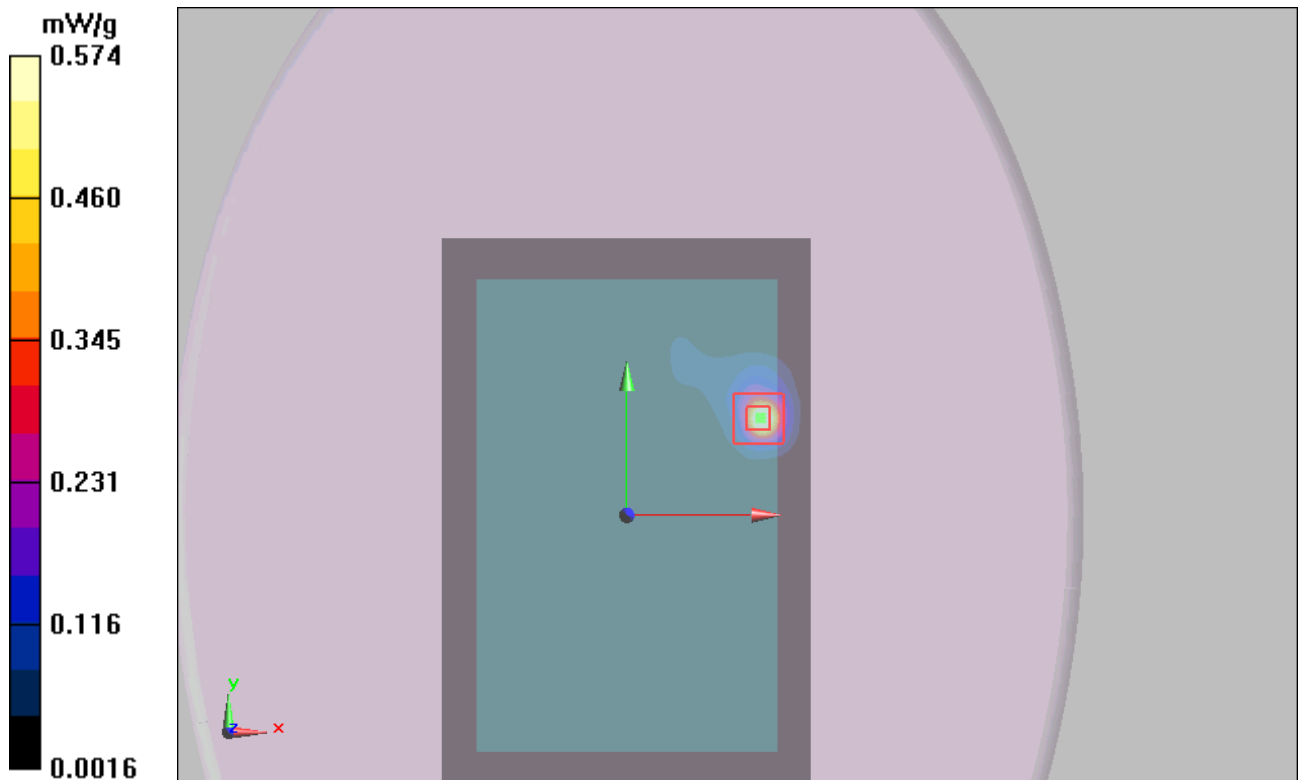


Figure 7 802.11b Test Position 1 Channel 11

**TA Technology (Shanghai) Co., Ltd.**  
**Test Report**

Report No. RZA1104-0497SAR01R1

Page 31 of 65

**802.11b Test Position 1 Middle**

Date/Time: 4/22/2011 10:38:46 AM

Communication System: 802.11b; Frequency: 2437 MHz; Duty Cycle: 1:1

Medium parameters used:  $f = 2436$  MHz;  $\sigma = 1.95$  mho/m;  $\epsilon_r = 51.8$ ;  $\rho = 1000$  kg/m<sup>3</sup>

Ambient Temperature: 22.3 °C      Liquid Temperature: 21.5 °C

Phantom section: Flat Section

DASY5 Configuration:

Probe: EX3DV4 - SN3677; ConvF(7.46, 7.46, 7.46); Calibrated: 11/24/2010

Electronics: DAE4 Sn871; Calibrated: 11/18/2010

Phantom: ELI 4.0; Type: QDOVA001BA;

Measurement SW: DASY5, V5.0 Build 120; SEMCAD X Version 13.4 Build 45

**Test Position 1 Middle/Area Scan (81x121x1):** Measurement grid: dx=15mm, dy=15mm

Maximum value of SAR (interpolated) = 0.576 mW/g

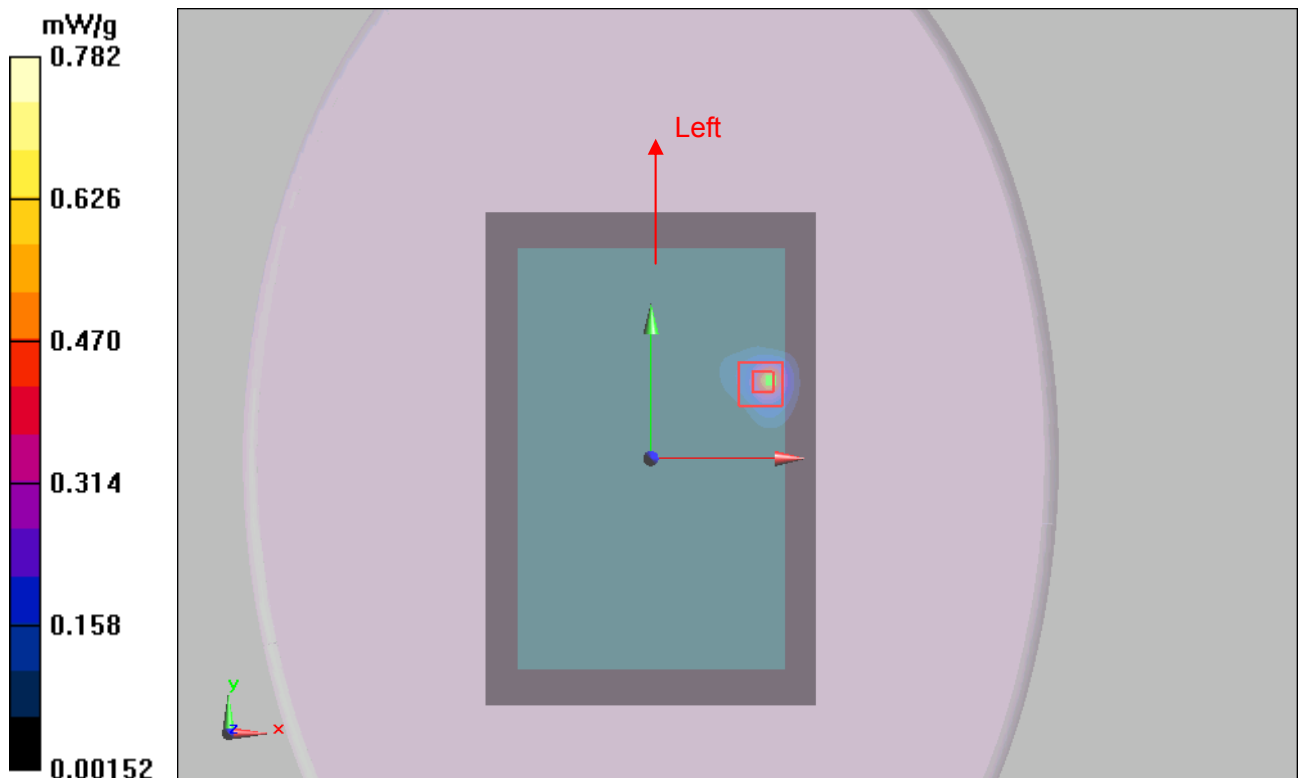
**Test Position 1 Middle/Zoom Scan (7x7x7)/Cube 0:** Measurement grid: dx=5mm, dy=5mm, dz=5mm

Reference Value = 1.06 V/m; Power Drift = 0.063 dB

Peak SAR (extrapolated) = 1.65 W/kg

**SAR(1 g) = 0.722 mW/g; SAR(10 g) = 0.280 mW/g**

Maximum value of SAR (measured) = 0.782 mW/g



TA Technology (Shanghai) Co., Ltd.  
Test Report

Report No. RZA1104-0497SAR01R1

Page 32 of 65

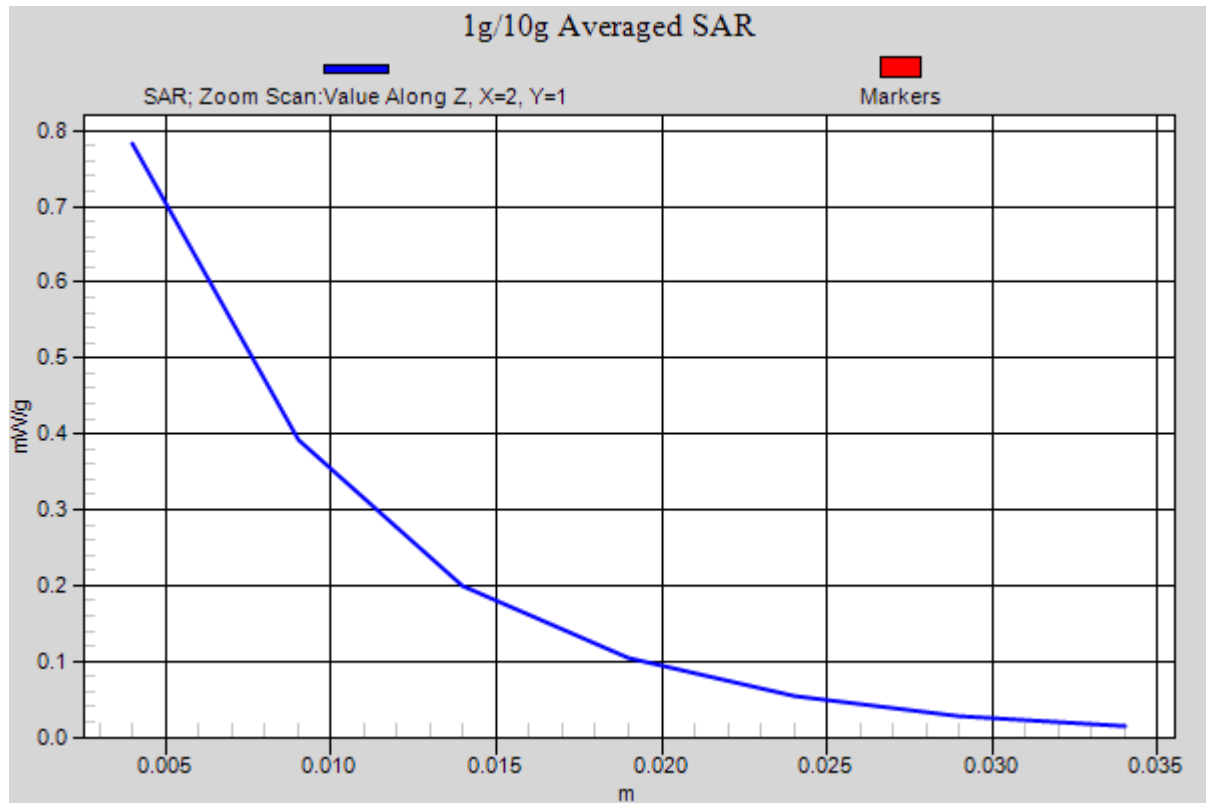


Figure 8 802.11b Test Position 1 Channel 6



### 802.11b Test Position 1 Low

Date/Time: 4/22/2011 12:48:37 PM

Communication System: 802.11b; Frequency: 2412 MHz; Duty Cycle: 1:1

Medium parameters used:  $f = 2412$  MHz;  $\sigma = 1.92$  mho/m;  $\epsilon_r = 51.9$ ;  $\rho = 1000$  kg/m<sup>3</sup>

Ambient Temperature: 22.3 °C      Liquid Temperature: 21.5 °C

Phantom section: Flat Section

DASY5 Configuration:

Probe: EX3DV4 - SN3677; ConvF(7.46, 7.46, 7.46); Calibrated: 11/24/2010

Electronics: DAE4 Sn871; Calibrated: 11/18/2010

Phantom: ELI 4.0; Type: QDOVA001BA;

Measurement SW: DASY5, V5.0 Build 120; SEMCAD X Version 13.4 Build 45

**Towards Phantom Low/Area Scan (81x121x1):** Measurement grid: dx=15mm, dy=15mm

Maximum value of SAR (interpolated) = 0.468 mW/g

**Towards Phantom Low/Zoom Scan (7x7x7)/Cube 0:** Measurement grid: dx=5mm, dy=5mm, dz=5mm

Reference Value = 0.871 V/m; Power Drift = -0.025 dB

Peak SAR (extrapolated) = 1.04 W/kg

**SAR(1 g) = 0.449 mW/g; SAR(10 g) = 0.174 mW/g**

Maximum value of SAR (measured) = 0.404 mW/g

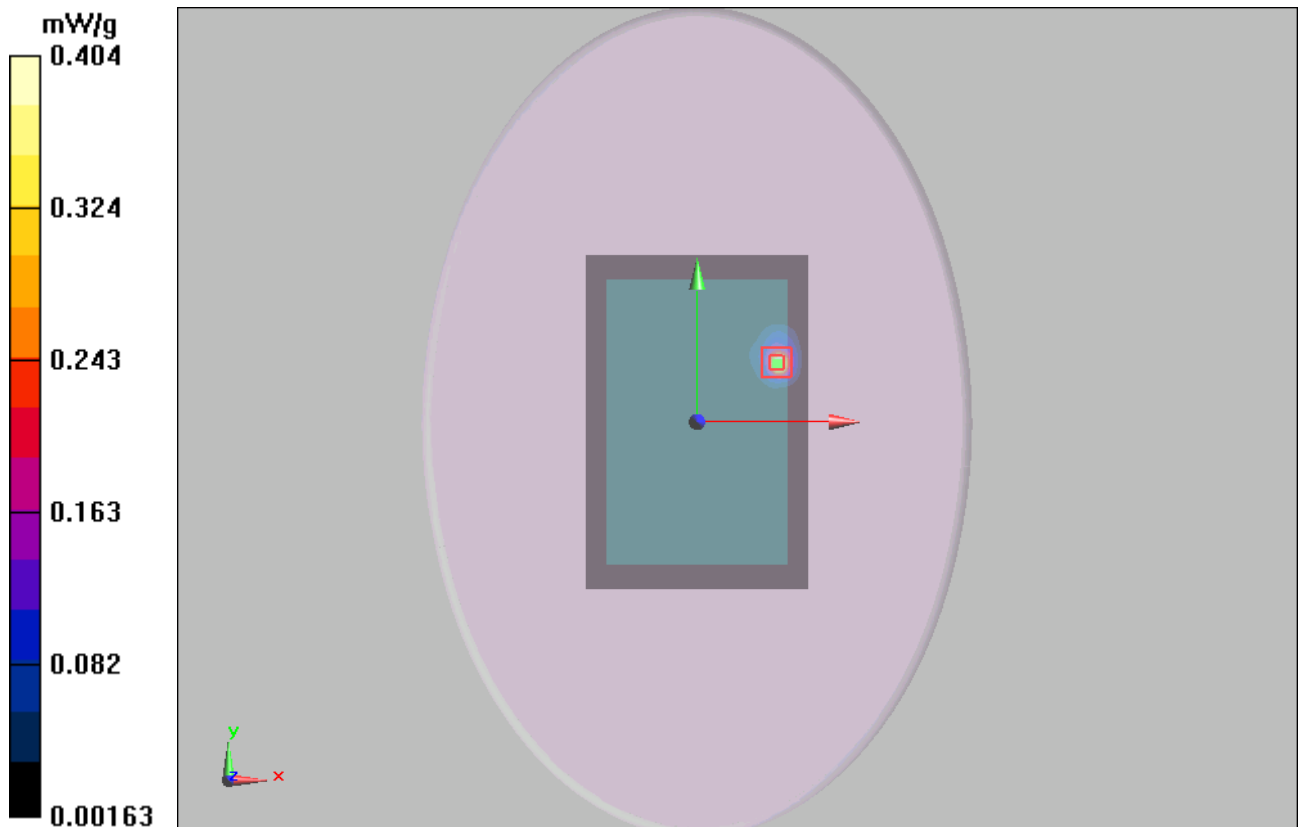


Figure 9 802.11b Test Position 1 Channel 1

### 802.11b Test Position 2 Middle

Date/Time: 4/21/2011 7:42:39 PM

Communication System: 802.11b; Frequency: 2437 MHz; Duty Cycle: 1:1

Medium parameters used:  $f = 2436$  MHz;  $\sigma = 1.95$  mho/m;  $\epsilon_r = 51.8$ ;  $\rho = 1000$  kg/m<sup>3</sup>

Ambient Temperature: 22.3 °C      Liquid Temperature: 21.5 °C

Phantom section: Flat Section

DASY5 Configuration:

Probe: EX3DV4 - SN3677; ConvF(7.46, 7.46, 7.46); Calibrated: 11/24/2010

Electronics: DAE4 Sn871; Calibrated: 11/18/2010

Phantom: ELI 4.0; Type: QDOVA001BA;

Measurement SW: DASY5, V5.0 Build 120; SEMCAD X Version 13.4 Build 45

**Test Position 2 Middle/Area Scan (31x121x1):** Measurement grid: dx=15mm, dy=15mm

Maximum value of SAR (interpolated) = 0.068 mW/g

**Test Position 2 Middle/Zoom Scan (7x7x7)/Cube 0:** Measurement grid: dx=5mm, dy=5mm, dz=5mm

Reference Value = 0.894 V/m; Power Drift = -0.09 dB

Peak SAR (extrapolated) = 0.145 W/kg

**SAR(1 g) = 0.080 mW/g; SAR(10 g) = 0.038 mW/g**

Maximum value of SAR (measured) = 0.082 mW/g

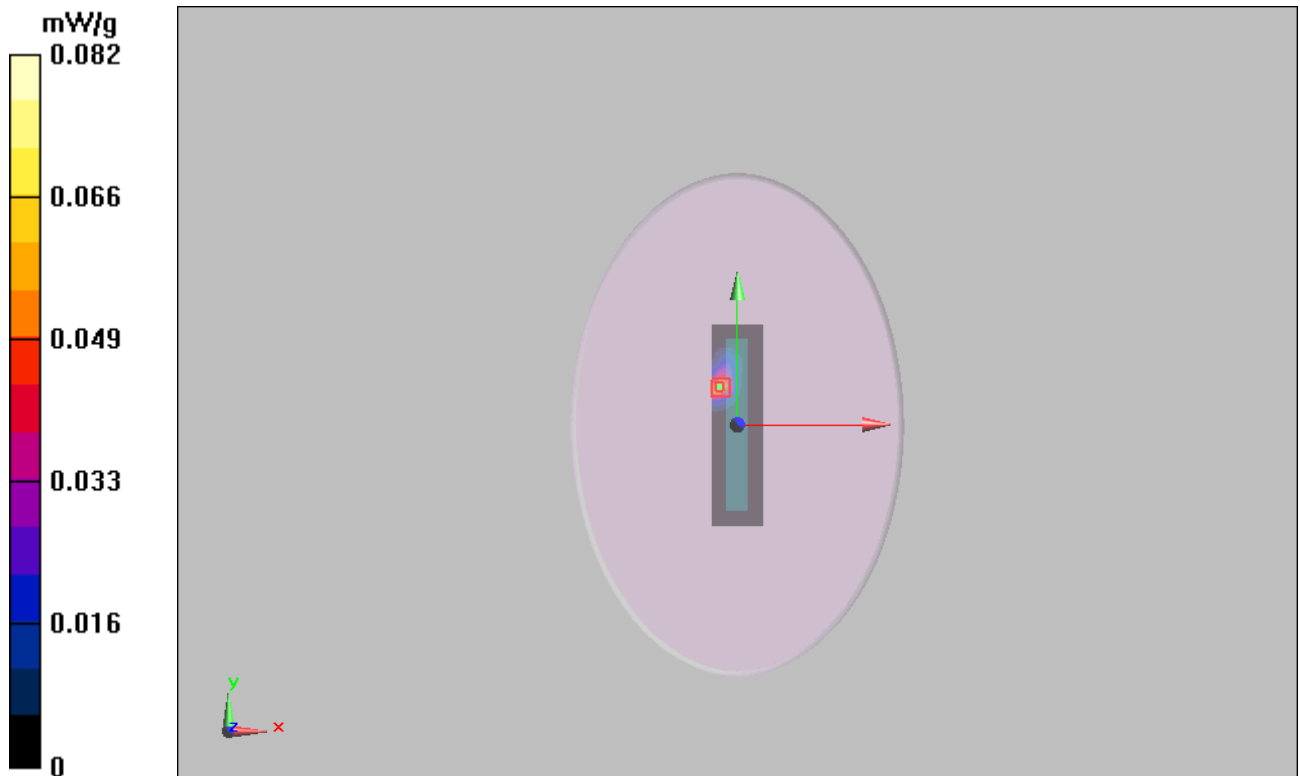


Figure 10 802.11b Test Position 2 Channel 6

### 802.11b Test Position 5 Middle

Date/Time: 4/21/2011 8:07:05 PM

Communication System: 802.11b; Frequency: 2437 MHz; Duty Cycle: 1:1

Medium parameters used:  $f = 2436$  MHz;  $\sigma = 1.95$  mho/m;  $\epsilon_r = 51.8$ ;  $\rho = 1000$  kg/m<sup>3</sup>

Ambient Temperature: 22.3 °C      Liquid Temperature: 21.5 °C

Phantom section: Flat Section

DASY5 Configuration:

Probe: EX3DV4 - SN3677; ConvF(7.46, 7.46, 7.46); Calibrated: 11/24/2010

Electronics: DAE4 Sn871; Calibrated: 11/18/2010

Phantom: ELI 4.0; Type: QDOVA001BA;

Measurement SW: DASY5, V5.0 Build 120; SEMCAD X Version 13.4 Build 45

**Test Position 5 Middle/Area Scan (31x91x1):** Measurement grid: dx=15mm, dy=15mm

Maximum value of SAR (interpolated) = 0.022 mW/g

**Test Position 5 Middle/Zoom Scan (7x7x7)/Cube 0:** Measurement grid: dx=5mm, dy=5mm, dz=5mm

Reference Value = 1.28 V/m; Power Drift = 0.054 dB

Peak SAR (extrapolated) = 0.039 W/kg

**SAR(1 g) = 0.020 mW/g; SAR(10 g) = 0.009 mW/g**

Maximum value of SAR (measured) = 0.023 mW/g

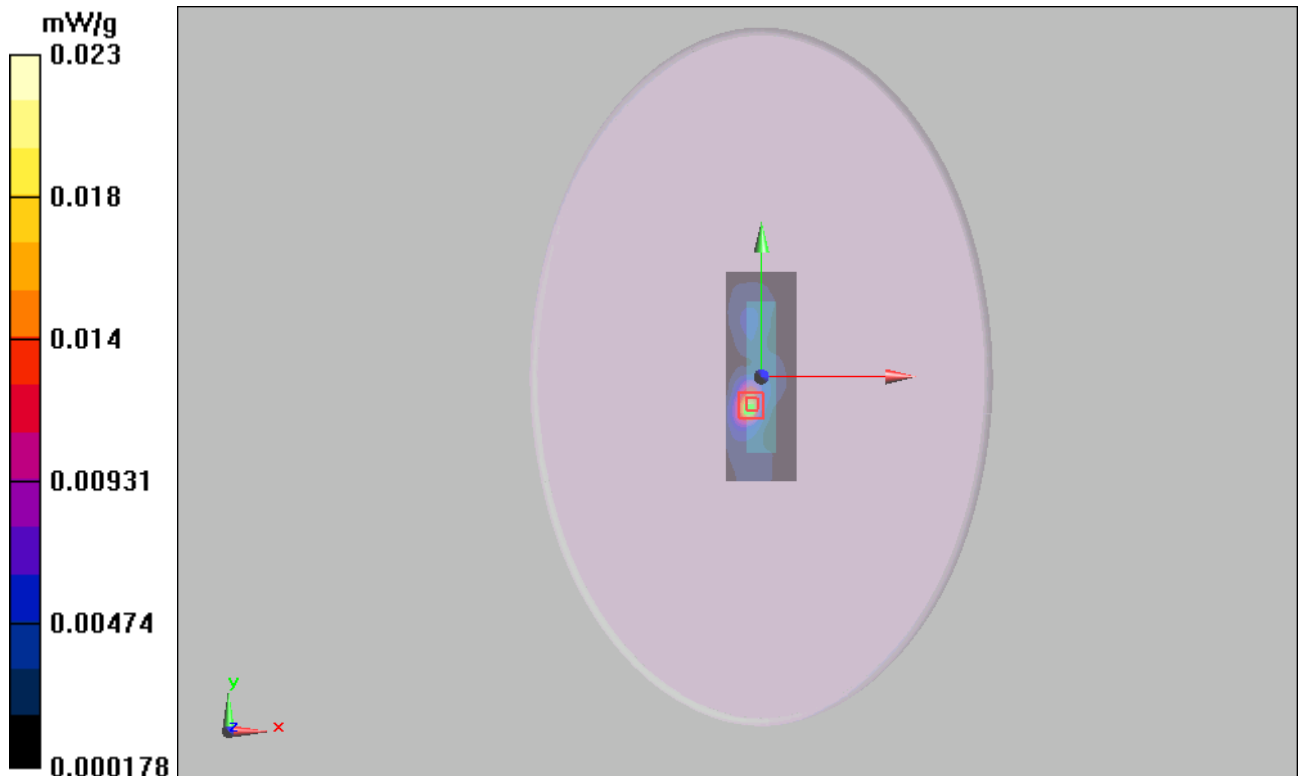


Figure 11 802.11b Test Position 5 Channel 6

# TA Technology (Shanghai) Co., Ltd.

## Test Report

Report No. RZA1104-0497SAR01R1

Page 36 of 65

### ANNEX D: Probe Calibration Certificate

Calibration Laboratory of  
Schmid & Partner  
Engineering AG  
Zeughausstrasse 43, 8004 Zurich, Switzerland



S Schweizerischer Kalibrierdienst  
C Service suisse d'étalonnage  
S Servizio svizzero di taratura  
S Swiss Calibration Service

Accredited by the Swiss Accreditation Service (SAS)  
The Swiss Accreditation Service is one of the signatories to the EA  
Multilateral Agreement for the recognition of calibration certificates

Accreditation No.: SCS 108

Client **TA-SH (Auden)**

Certificate No: **EX3-3677\_Nov10**

#### CALIBRATION CERTIFICATE

Object **EX3DV4 - SN:3677**

Calibration procedure(s) **QA CAL-01.v6, QA CAL-14.v3, QA CAL-23.v3 and QA CAL-25.v2  
Calibration procedure for dosimetric E-field probes**

Calibration date: **November 24, 2010**

This calibration certificate documents the traceability to national standards, which realize the physical units of measurements (SI).  
The measurements and the uncertainties with confidence probability are given on the following pages and are part of the certificate.

All calibrations have been conducted in the closed laboratory facility: environment temperature ( $22 \pm 3$ )°C and humidity < 70%.

Calibration Equipment used (M&TE critical for calibration)

Primary Standards	ID #	Cal Date (Certificate No.)	Scheduled Calibration
Power meter E4419B	GB41293874	1-Apr-10 (No. 217-01136)	Apr-11
Power sensor E4412A	MY41495277	1-Apr-10 (No. 217-01136)	Apr-11
Power sensor E4412A	MY41498087	1-Apr-10 (No. 217-01136)	Apr-11
Reference 3 dB Attenuator	SN: S5054 (3c)	30-Mar-10 (No. 217-01159)	Mar-11
Reference 20 dB Attenuator	SN: S5086 (20b)	30-Mar-10 (No. 217-01161)	Mar-11
Reference 30 dB Attenuator	SN: S5129 (30b)	30-Mar-10 (No. 217-01160)	Mar-11
Reference Probe ES3DV2	SN: 3013	30-Dec-09 (No. ES3-3013_Dec09)	Dec-10
D4E4	SN: 660	20-Apr-10 (No. D4E4-660_Apr10)	Apr-11
Secondary Standards	ID #	Check Date (in house)	Scheduled Check
RF generator HP 8648C	US3642U01700	4-Aug-99 (in house check Oct-09)	In house check: Oct-11
Network Analyzer HP 8753E	US37390585	18-Oct-01 (in house check Oct-10)	In house check: Oct-11

Calibrated by:	Name <b>Katja Pokovic</b>	Function <b>Technical Manager</b>	Signature 
Approved by:	Name <b>Niels Kuster</b>	Function <b>Quality Manager</b>	Signature 

Issued: November 25, 2010

This calibration certificate shall not be reproduced except in full without written approval of the laboratory.

Certificate No: EX3-3677\_Nov10

Page 1 of 11

Calibration Laboratory of  
Schmid & Partner  
Engineering AG  
Zeughausstrasse 43, 8004 Zurich, Switzerland



S Schweizerischer Kalibrierdienst  
C Service suisse d'étalonnage  
S Servizio svizzero di taratura  
S Swiss Calibration Service

Accredited by the Swiss Accreditation Service (SAS)  
The Swiss Accreditation Service is one of the signatories to the EA  
Multilateral Agreement for the recognition of calibration certificates

Accreditation No.: SCS 108

#### Glossary:

TSL	tissue simulating liquid
NORM <sub>x,y,z</sub>	sensitivity in free space
ConvF	sensitivity in TSL / NORM <sub>x,y,z</sub>
DCP	diode compression point
CF	crest factor (1/duty_cycle) of the RF signal
A, B, C	modulation dependent linearization parameters
Polarization $\varphi$	$\varphi$ rotation around probe axis
Polarization $\vartheta$	$\vartheta$ rotation around an axis that is in the plane normal to probe axis (at measurement center), i.e., $\vartheta = 0$ is normal to probe axis

#### Calibration is Performed According to the Following Standards:

- IEEE Std 1528-2003, "IEEE Recommended Practice for Determining the Peak Spatial-Averaged Specific Absorption Rate (SAR) in the Human Head from Wireless Communications Devices: Measurement Techniques", December 2003
- IEC 62209-1, "Procedure to measure the Specific Absorption Rate (SAR) for hand-held devices used in close proximity to the ear (frequency range of 300 MHz to 3 GHz)", February 2005

#### Methods Applied and Interpretation of Parameters:

- NORM<sub>x,y,z</sub>: Assessed for E-field polarization  $\vartheta = 0$  ( $f \leq 900$  MHz in TEM-cell;  $f > 1800$  MHz: R22 waveguide). NORM<sub>x,y,z</sub> are only intermediate values, i.e., the uncertainties of NORM<sub>x,y,z</sub> does not effect the E<sup>2</sup>-field uncertainty inside TSL (see below ConvF).
- NORM( $f$ )<sub>x,y,z</sub> = NORM<sub>x,y,z</sub> \* frequency\_response (see Frequency Response Chart). This linearization is implemented in DASY4 software versions later than 4.2. The uncertainty of the frequency response is included in the stated uncertainty of ConvF.
- DCP<sub>x,y,z</sub>: DCP are numerical linearization parameters assessed based on the data of power sweep with CW signal (no uncertainty required). DCP does not depend on frequency nor media.
- A<sub>x,y,z</sub>; B<sub>x,y,z</sub>; C<sub>x,y,z</sub>; VR<sub>x,y,z</sub>: A, B, C are numerical linearization parameters assessed based on the data of power sweep for specific modulation signal. The parameters do not depend on frequency nor media. VR is the maximum calibration range expressed in RMS voltage across the diode.
- ConvF and Boundary Effect Parameters: Assessed in flat phantom using E-field (or Temperature Transfer Standard for  $f \leq 800$  MHz) and inside waveguide using analytical field distributions based on power measurements for  $f > 800$  MHz. The same setups are used for assessment of the parameters applied for boundary compensation (alpha, depth) of which typical uncertainty values are given. These parameters are used in DASY4 software to improve probe accuracy close to the boundary. The sensitivity in TSL corresponds to NORM<sub>x,y,z</sub> \* ConvF whereby the uncertainty corresponds to that given for ConvF. A frequency dependent ConvF is used in DASY version 4.4 and higher which allows extending the validity from  $\pm 50$  MHz to  $\pm 100$  MHz.
- Spherical isotropy (3D deviation from isotropy): in a field of low gradients realized using a flat phantom exposed by a patch antenna.
- Sensor Offset: The sensor offset corresponds to the offset of virtual measurement center from the probe tip (on probe axis). No tolerance required.

EX3DV4 SN:3677

November 24, 2010

Probe EX3DV4

SN:3677

Manufactured:	September 9, 2008
Last calibrated:	September 23, 2009
Recalibrated:	November 24, 2010

Calibrated for DASY/EASY Systems

(Note: non-compatible with DASY2 system!)

**TA Technology (Shanghai) Co., Ltd.**  
**Test Report**

Report No. RZA1104-0497SAR01R1

Page 39 of 65

EX3DV4 SN:3677

November 24, 2010

**DASY/EASY - Parameters of Probe: EX3DV4 SN:3677**

**Basic Calibration Parameters**

	Sensor X	Sensor Y	Sensor Z	Unc (k=2)
Norm ( $\mu\text{V}/(\text{V}/\text{m})^2$ ) <sup>A</sup>	0.41	0.47	0.39	± 10.1%
DCP (mV) <sup>B</sup>	96.8	98.9	98.8	

**Modulation Calibration Parameters**

UID	Communication System Name	PAR		A dB	B dBuV	C	VR mV	Unc <sup>E</sup> (k=2)
10000	CW	0.00	X	0.00	0.00	1.00	143.2	± 2.4 %
			Y	0.00	0.00	1.00	140.9	
			Z	0.00	0.00	1.00	135.8	

The reported uncertainty of measurement is stated as the standard uncertainty of measurement multiplied by the coverage factor k=2, which for a normal distribution corresponds to a coverage probability of approximately 95%.

<sup>A</sup> The uncertainties of NormX, Y, Z do not affect the E<sup>2</sup>-field uncertainty inside TSL (see Pages 5 and 8).

<sup>B</sup> Numerical linearization parameter: uncertainty not required.

<sup>E</sup> Uncertainty is determined using the maximum deviation from linear response applying rectangular distribution and is expressed for the square of the field value.

TA Technology (Shanghai) Co., Ltd.  
Test Report

Report No. RZA1104-0497SAR01R1

Page 40 of 65

EX3DV4 SN:3677

November 24, 2010

**DASY/EASY - Parameters of Probe: EX3DV4 SN:3677**

**Calibration Parameter Determined in Head Tissue Simulating Media**

f [MHz]	Validity [MHz] <sup>c</sup>	Permittivity	Conductivity	ConvF X	ConvF Y	ConvF Z	Alpha	Depth Unc (k=2)
450	± 50 / ± 100	43.5 ± 5%	0.87 ± 5%	10.04	10.04	10.04	0.09	1.00 ± 13.3%
835	± 50 / ± 100	41.5 ± 5%	0.90 ± 5%	9.50	9.50	9.50	0.72	0.64 ± 11.0%
1750	± 50 / ± 100	40.1 ± 5%	1.37 ± 5%	8.22	8.22	8.22	0.72	0.59 ± 11.0%
1900	± 50 / ± 100	40.0 ± 5%	1.40 ± 5%	7.94	7.94	7.94	0.81	0.57 ± 11.0%
2450	± 50 / ± 100	39.2 ± 5%	1.80 ± 5%	7.32	7.32	7.32	0.47	0.75 ± 11.0%

<sup>c</sup> The validity of ± 100 MHz only applies for DASY v4.4 and higher (see Page 2). The uncertainty is the RSS of the ConvF uncertainty at calibration frequency and the uncertainty for the indicated frequency band.



TA Technology (Shanghai) Co., Ltd.  
Test Report

Report No. RZA1104-0497SAR01R1

Page 41 of 65

EX3DV4 SN:3677

November 24, 2010

**DASY/EASY - Parameters of Probe: EX3DV4 SN:3677**

**Calibration Parameter Determined in Body Tissue Simulating Media**

f [MHz]	Validity [MHz] <sup>C</sup>	Permittivity	Conductivity	ConvF X	ConvF Y	ConvF Z	Alpha	Depth Unc (k=2)
450	± 50 / ± 100	56.7 ± 5%	0.94 ± 5%	10.62	10.62	10.62	0.02	1.00 ± 13.3%
750	± 50 / ± 100	55.5 ± 5%	0.96 ± 5%	10.14	10.14	10.14	0.59	0.72 ± 11.0%
835	± 50 / ± 100	55.2 ± 5%	0.97 ± 5%	10.33	10.33	10.33	0.20	2.06 ± 11.0%
1450	± 50 / ± 100	54.0 ± 5%	1.30 ± 5%	8.47	8.47	8.47	0.99	0.53 ± 11.0%
1750	± 50 / ± 100	53.4 ± 5%	1.49 ± 5%	8.02	8.02	8.02	0.63	0.67 ± 11.0%
1900	± 50 / ± 100	53.3 ± 5%	1.52 ± 5%	7.77	7.77	7.77	0.69	0.67 ± 11.0%
2100	± 50 / ± 100	53.2 ± 5%	1.62 ± 5%	8.04	8.04	8.04	0.16	1.44 ± 11.0%
2450	± 50 / ± 100	52.7 ± 5%	1.95 ± 5%	7.46	7.46	7.46	0.99	0.49 ± 11.0%
3500	± 50 / ± 100	51.3 ± 5%	3.31 ± 5%	6.61	6.61	6.61	0.28	1.40 ± 13.1%

<sup>C</sup> The validity of ± 100 MHz only applies for DASY v4.4 and higher (see Page 2). The uncertainty is the RSS of the ConvF uncertainty at calibration frequency and the uncertainty for the indicated frequency band.

# TA Technology (Shanghai) Co., Ltd.

## Test Report

Report No. RZA1104-0497SAR01R1

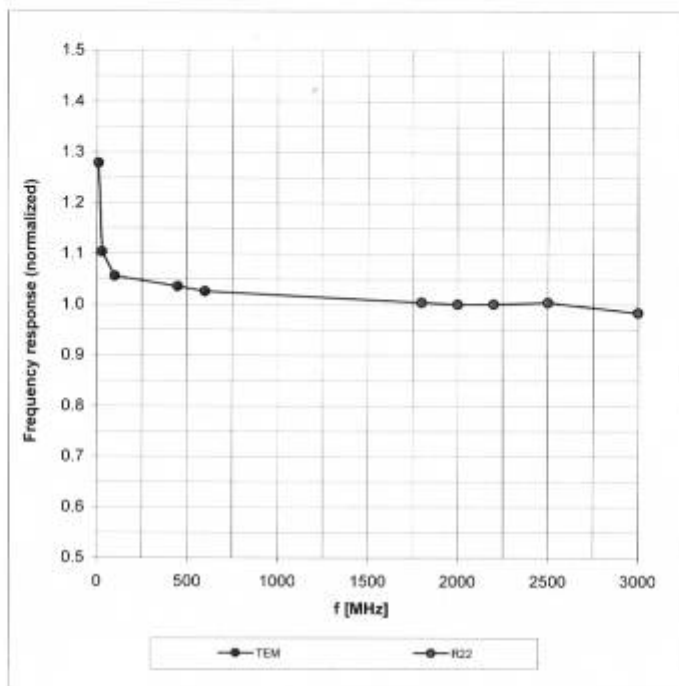
Page 42 of 65

EX3DV4 SN:3677

November 24, 2010

### Frequency Response of E-Field

(TEM-Cell: ifi110 EXX, Waveguide: R22)



Uncertainty of Frequency Response of E-field:  $\pm 6.3\%$  ( $k=2$ )

# TA Technology (Shanghai) Co., Ltd.

## Test Report

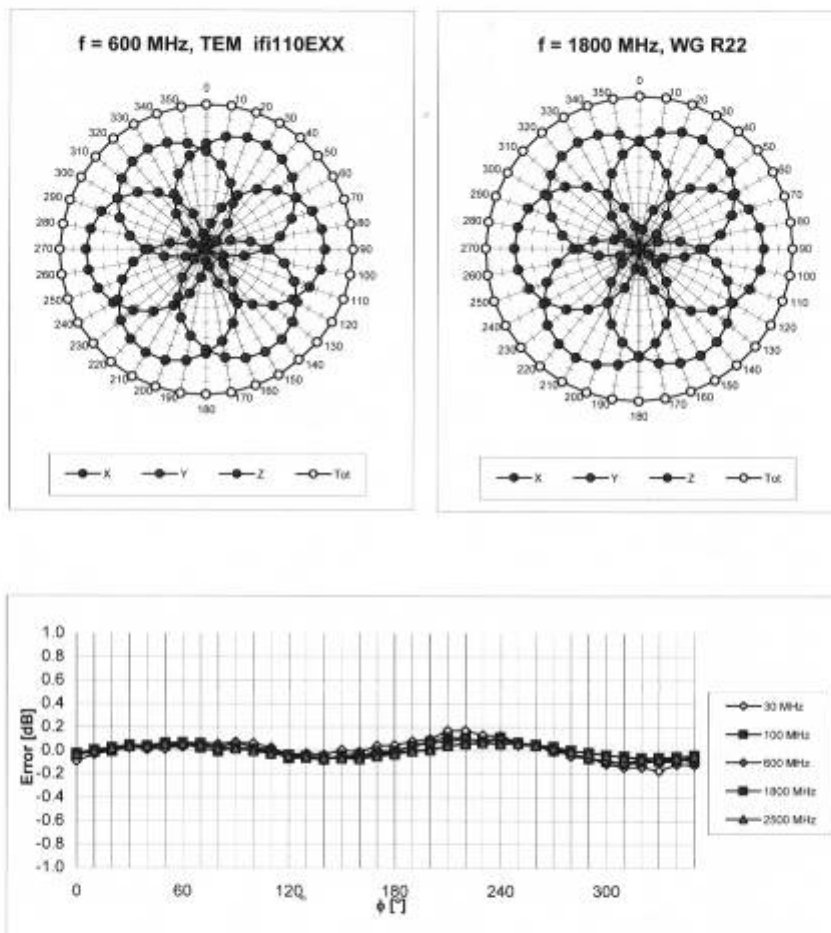
Report No. RZA1104-0497SAR01R1

Page 43 of 65

EX3DV4 SN:3677

November 24, 2010

### Receiving Pattern ( $\phi$ ), $\theta = 0^\circ$



Uncertainty of Axial Isotropy Assessment:  $\pm 0.5\%$  ( $k=2$ )

# TA Technology (Shanghai) Co., Ltd.

## Test Report

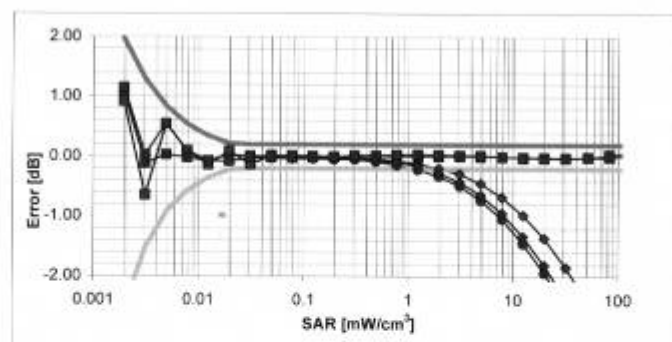
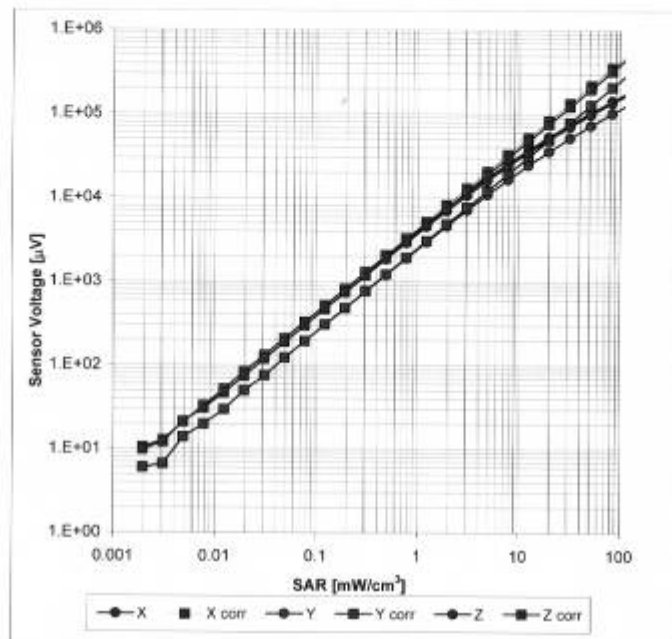
Report No. RZA1104-0497SAR01R1

Page 44 of 65

EX3DV4 SN:3677

November 24, 2010

### Dynamic Range $f(\text{SAR}_{\text{head}})$ (TEM cell, $f = 900 \text{ MHz}$ )

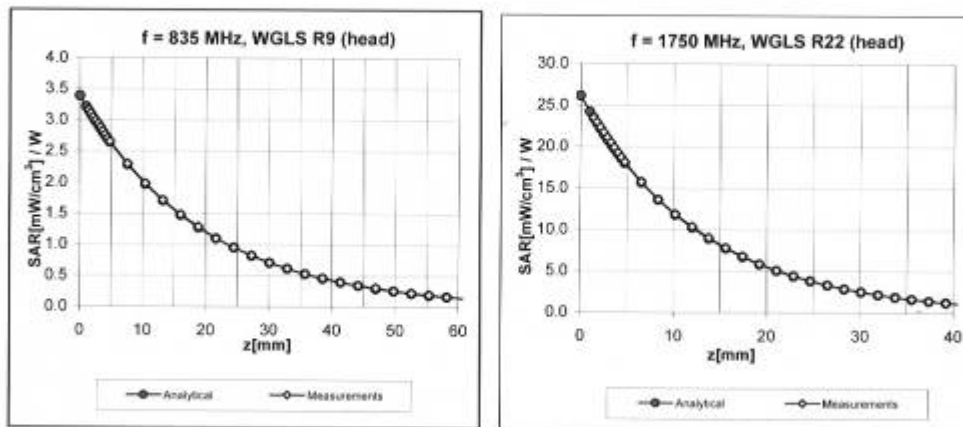


Uncertainty of Linearity Assessment:  $\pm 0.6\%$  ( $k=2$ )

EX3DV4 SN:3677

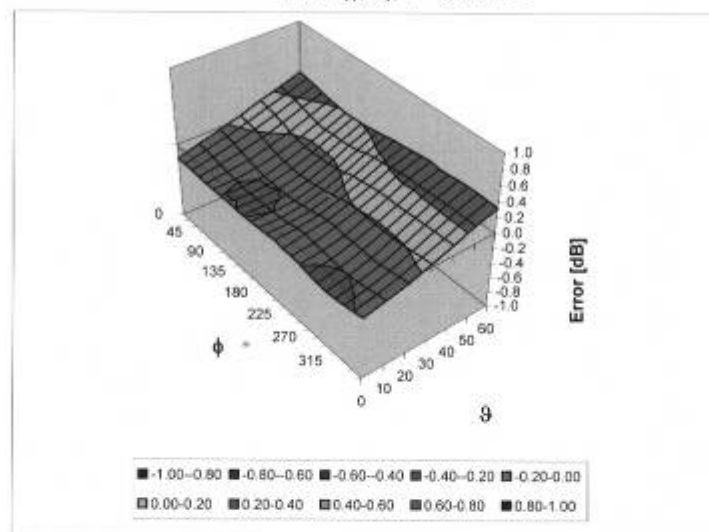
November 24, 2010

### Conversion Factor Assessment



### Deviation from Isotropy in HSL

Error ( $\phi$ ,  $\theta$ ), f = 900 MHz



Uncertainty of Spherical Isotropy Assessment:  $\pm 2.6\%$  (k=2)

**TA Technology (Shanghai) Co., Ltd.**  
**Test Report**

Report No. RZA1104-0497SAR01R1

Page 46 of 65

EX3DV4 SN:3677

November 24, 2010

**Other Probe Parameters**

Sensor Arrangement	Triangular
Connector Angle (°)	Not applicable
Mechanical Surface Detection Mode	enabled
Optical Surface Detection Mode	disabled
Probe Overall Length	337 mm
Probe Body Diameter	10 mm
Tip Length	9 mm
Tip Diameter	2.5 mm
Probe Tip to Sensor X Calibration Point	1 mm
Probe Tip to Sensor Y Calibration Point	1 mm
Probe Tip to Sensor Z Calibration Point	1 mm
Recommended Measurement Distance from Surface	2 mm

# TA Technology (Shanghai) Co., Ltd.

## Test Report

Report No. RZA1104-0497SAR01R1

Page 47 of 65

### ANNEX E: D2450V2 Dipole Calibration Certificate

**Calibration Laboratory of**  
**Schmid & Partner**  
**Engineering AG**  
Zeughausstrasse 43, 8004 Zurich, Switzerland



S Schweizerischer Kalibrierdienst  
C Service suisse d'étalonnage  
S Servizio svizzero di taratura  
S Swiss Calibration Service

Accredited by the Swiss Accreditation Service (SAS)  
The Swiss Accreditation Service is one of the signatories to the EA  
Multilateral Agreement for the recognition of calibration certificates

Accreditation No.: SCS 108

Client **ATL (Auden)**

Certificate No: **D2450V2-712\_Feb10**

#### CALIBRATION CERTIFICATE

Object **D2450V2 - SN: 712**

Calibration procedure(s) **QA CAL-05.v7**  
**Calibration procedure for dipole validation kits**

Calibration date: **February 19, 2010**

This calibration certificate documents the traceability to national standards, which realize the physical units of measurements (SI).  
The measurements and the uncertainties with confidence probability are given on the following pages and are part of the certificate.

All calibrations have been conducted in the closed laboratory facility: environment temperature ( $22 \pm 3$ )°C and humidity < 70%.

Calibration Equipment used (M&TE critical for calibration)

Primary Standards	ID #	Cal Date (Certificate No.)	Scheduled Calibration
Power meter EPM-442A	GB37480704	06-Oct-09 (No. 217-01086)	Oct-10
Power sensor HP 8481A	US37292783	06-Oct-09 (No. 217-01086)	Oct-10
Reference 20 dB Attenuator	SN: 5086 (20g)	31-Mar-09 (No. 217-01025)	Mar-10
Type-N mismatch combination	SN: 5047.2 / 06327	31-Mar-09 (No. 217-01029)	Mar-10
Reference Probe ES3DV3	SN: 3205	26-Jun-09 (No. ES3-3205_Jun09)	Jun-10
DAE4	SN: 601	07-Mar-09 (No. DAE4-601_Mar09)	Mar-10
Secondary Standards	ID #	Check Date (in house)	Scheduled Check
Power sensor HP 8481A	MY41092317	18-Oct-02 (in house check Oct-09)	In house check: Oct-11
RF generator R&S SMT-06	100005	4-Aug-99 (in house check Oct-09)	In house check: Oct-11
Network Analyzer HP 8753E	US37390585 S4206	18-Oct-01 (in house check Oct-09)	In house check: Oct-10

Calibrated by: **Name** **Function**  
**Jeton Kastrati** **Laboratory Technician**

**Signature**

Approved by: **Name** **Function**  
**Katja Pokovic** **Technical Manager**

Issued: February 19, 2010

This calibration certificate shall not be reproduced except in full without written approval of the laboratory.

# TA Technology (Shanghai) Co., Ltd.

## Test Report

Report No. RZA1104-0497SAR01R1

Page 48 of 65

**Calibration Laboratory of**  
**Schmid & Partner**  
**Engineering AG**  
Zeughausstrasse 43, 8004 Zurich, Switzerland



**S** Schweizerischer Kalibrierdienst  
**S** Service suisse d'étalonnage  
**C** Servizio svizzero di taratura  
**S** Swiss Calibration Service

Accredited by the Swiss Accreditation Service (SAS)  
The Swiss Accreditation Service is one of the signatories to the EA  
Multilateral Agreement for the recognition of calibration certificates

Accreditation No.: **SCS 108**

### Glossary:

TSL	tissue simulating liquid
ConvF	sensitivity in TSL / NORM x,y,z
N/A	not applicable or not measured

### Calibration is Performed According to the Following Standards:

- IEEE Std 1528-2003, "IEEE Recommended Practice for Determining the Peak Spatial-Averaged Specific Absorption Rate (SAR) in the Human Head from Wireless Communications Devices: Measurement Techniques", December 2003
- IEC 62209-1, "Procedure to measure the Specific Absorption Rate (SAR) for hand-held devices used in close proximity to the ear (frequency range of 300 MHz to 3 GHz)", February 2005
- Federal Communications Commission Office of Engineering & Technology (FCC OET), "Evaluating Compliance with FCC Guidelines for Human Exposure to Radiofrequency Electromagnetic Fields; Additional Information for Evaluating Compliance of Mobile and Portable Devices with FCC Limits for Human Exposure to Radiofrequency Emissions", Supplement C (Edition 01-01) to Bulletin 65

### Additional Documentation:

- DASY4/5 System Handbook

### Methods Applied and Interpretation of Parameters:

- Measurement Conditions:** Further details are available from the Validation Report at the end of the certificate. All figures stated in the certificate are valid at the frequency indicated.
- Antenna Parameters with TSL:** The dipole is mounted with the spacer to position its feed point exactly below the center marking of the flat phantom section, with the arms oriented parallel to the body axis.
- Feed Point Impedance and Return Loss:** These parameters are measured with the dipole positioned under the liquid filled phantom. The impedance stated is transformed from the measurement at the SMA connector to the feed point. The Return Loss ensures low reflected power. No uncertainty required.
- Electrical Delay:** One-way delay between the SMA connector and the antenna feed point. No uncertainty required.
- SAR measured:** SAR measured at the stated antenna input power.
- SAR normalized:** SAR as measured, normalized to an input power of 1 W at the antenna connector.
- SAR for nominal TSL parameters:** The measured TSL parameters are used to calculate the nominal SAR result.



# TA Technology (Shanghai) Co., Ltd.

## Test Report

Report No. RZA1104-0497SAR01R1

Page 49 of 65

### Measurement Conditions

DASY system configuration, as far as not given on page 1.

DASY Version	DASY5	V5.2
Extrapolation	Advanced Extrapolation	
Phantom	Modular Flat Phantom V4.9	
Distance Dipole Center - TSL	10 mm	with Spacer
Zoom Scan Resolution	dx, dy, dz = 5 mm	
Frequency	2450 MHz $\pm$ 1 MHz	

### Head TSL parameters

The following parameters and calculations were applied.

	Temperature	Permittivity	Conductivity
Nominal Head TSL parameters	22.0 °C	39.2	1.80 mho/m
Measured Head TSL parameters	(22.0 $\pm$ 0.2) °C	38.5 $\pm$ 6 %	1.76 mho/m $\pm$ 6 %
Head TSL temperature during test	(21.0 $\pm$ 0.2) °C	----	----

### SAR result with Head TSL

SAR averaged over 1 cm <sup>3</sup> (1 g) of Head TSL	Condition	
SAR measured	250 mW input power	13.3 mW / g
SAR normalized	normalized to 1W	53.2 mW / g
SAR for nominal Head TSL parameters	normalized to 1W	53.5 mW / g $\pm$ 17.0 % (k=2)

SAR averaged over 10 cm <sup>3</sup> (10 g) of Head TSL	condition	
SAR measured	250 mW input power	6.24 mW / g
SAR normalized	normalized to 1W	25.0 mW / g
SAR for nominal Head TSL parameters	normalized to 1W	25.0 mW / g $\pm$ 16.5 % (k=2)

# TA Technology (Shanghai) Co., Ltd.

## Test Report

Report No. RZA1104-0497SAR01R1

Page 50 of 65

### Body TSL parameters

The following parameters and calculations were applied.

	Temperature	Permittivity	Conductivity
Nominal Body TSL parameters	22.0 °C	52.7	1.95 mho/m
Measured Body TSL parameters	(22.0 ± 0.2) °C	51.7 ± 6 %	2.00 mho/m ± 6 %
Body TSL temperature during test	(21.2 ± 0.2) °C	----	----

### SAR result with Body TSL

<b>SAR averaged over 1 cm<sup>3</sup> (1 g) of Body TSL</b>	Condition	
SAR measured	250 mW input power	13.0 mW / g
SAR normalized	normalized to 1W	52.0 mW / g
SAR for nominal Body TSL parameters	normalized to 1W	<b>51.1 mW / g ± 17.0 % (k=2)</b>

<b>SAR averaged over 10 cm<sup>3</sup> (10 g) of Body TSL</b>	condition	
SAR measured	250 mW input power	5.97 mW / g
SAR normalized	normalized to 1W	23.9 mW / g
SAR for nominal Body TSL parameters	normalized to 1W	<b>23.7 mW / g ± 16.5 % (k=2)</b>

# TA Technology (Shanghai) Co., Ltd.

## Test Report

Report No. RZA1104-0497SAR01R1

Page 51 of 65

### Appendix

#### Antenna Parameters with Head TSL

Impedance, transformed to feed point	$54.2 \Omega + 1.9 j\Omega$
Return Loss	- 27.1 dB

#### Antenna Parameters with Body TSL

Impedance, transformed to feed point	$50.1 \Omega + 5.2 j\Omega$
Return Loss	- 25.7 dB

#### General Antenna Parameters and Design

Electrical Delay (one direction)	1.144 ns
----------------------------------	----------

After long term use with 100W radiated power, only a slight warming of the dipole near the feedpoint can be measured.

The dipole is made of standard semirigid coaxial cable. The center conductor of the feeding line is directly connected to the second arm of the dipole. The antenna is therefore short-circuited for DC-signals.

No excessive force must be applied to the dipole arms, because they might bend or the soldered connections near the feedpoint may be damaged.

#### Additional EUT Data

Manufactured by	SPEAG
Manufactured on	July 05, 2002

## DASY5 Validation Report for Head TSL

Date/Time: 17.02.2010 13:12:38

Test Laboratory: SPEAG, Zurich, Switzerland

**DUT: Dipole 2450 MHz; Type: D2450V2; Serial: D2450V2 - SN:712**

Communication System: CW; Frequency: 2450 MHz; Duty Cycle: 1:1

Medium: HSL U11 BB

Medium parameters used:  $f = 2450$  MHz;  $\sigma = 1.77$  mho/m;  $\epsilon_r = 38.7$ ;  $\rho = 1000$  kg/m<sup>3</sup>

Phantom section: Flat Section

Measurement Standard: DASY5 (IEEE/IEC/ANSI C63.19-2007)

### DASY5 Configuration:

- Probe: ES3DV3 - SN3205; ConvF(4.53, 4.53, 4.53); Calibrated: 26.06.2009
- Sensor-Surface: 3mm (Mechanical Surface Detection)
- Electronics: DAE4 Sn601; Calibrated: 07.03.2009
- Phantom: Flat Phantom 5.0 (front); Type: QD000P50AA; Serial: 1001
- Measurement SW: DASY5, V5.2 Build 157; SEMCAD X Version 14.0 Build 57

**Pin=250 mW /d=10mm, dist=3.0mm (ES-Probe)/Zoom Scan (7x7x7)/Cube 0: Measurement**

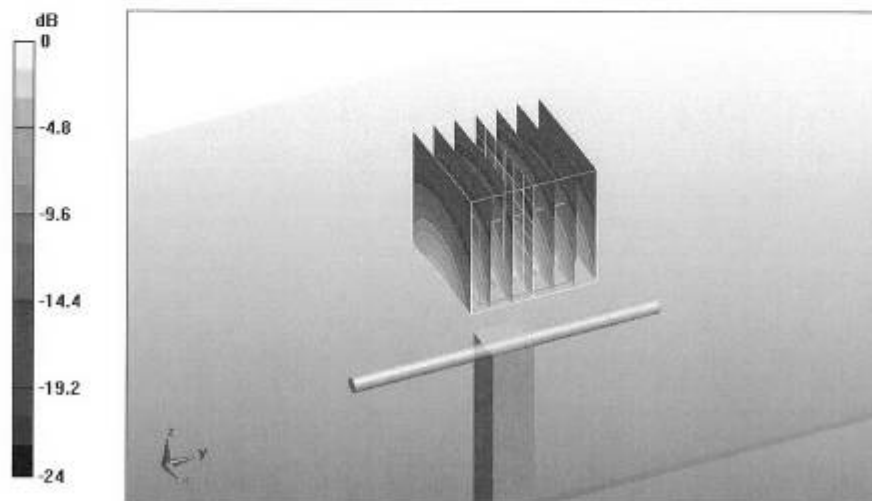
grid: dx=5mm, dy=5mm, dz=5mm

Reference Value = 102.1 V/m; Power Drift = 0.032 dB

Peak SAR (extrapolated) = 27.2 W/kg

**SAR(1 g) = 13.3 mW/g; SAR(10 g) = 6.24 mW/g**

Maximum value of SAR (measured) = 17.1 mW/g



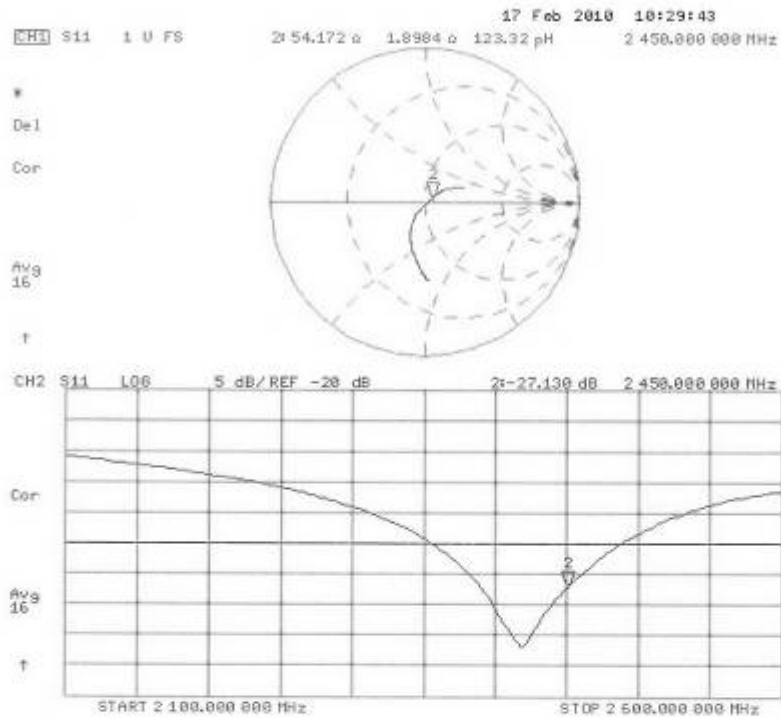
0 dB = 17.1 mW/g

TA Technology (Shanghai) Co., Ltd.  
Test Report

Report No. RZA1104-0497SAR01R1

Page 53 of 65

Impedance Measurement Plot for Head TSL



### DASY5 Validation Report for Body

Date/Time: 19.02.2010 13:05:49

Test Laboratory: SPEAG, Zurich, Switzerland

**DUT: Dipole 2450 MHz; Type: D2450V2; Serial: D2450V2 - SN:712**

Communication System: CW; Frequency: 2450 MHz; Duty Cycle: 1:1

Medium: MSL U10 BB

Medium parameters used:  $f = 2450$  MHz;  $\sigma = 2.01$  mho/m;  $\epsilon_r = 51.8$ ;  $\rho = 1000$  kg/m<sup>3</sup>

Phantom section: Flat Section

Measurement Standard: DASY5 (IEEE/IEC/ANSI C63.19-2007)

DASY5 Configuration:

- Probe: ES3DV3 - SN3205; ConvF(4.31, 4.31, 4.31); Calibrated: 26.06.2009
- Sensor-Surface: 3mm (Mechanical Surface Detection)
- Electronics: DAE4 Sn601; Calibrated: 07.03.2009
- Phantom: Flat Phantom 5.0 (back); Type: QD000P50AA; Serial: 1002
- Measurement SW: DASY5, V5.2 Build 157; SEMCAD X Version 14.0 Build 57

**Pin250 mW /d=10mm, dist=3.0mm (ES-Probe)/Zoom Scan (7x7x7)/Cube 0: Measurement**

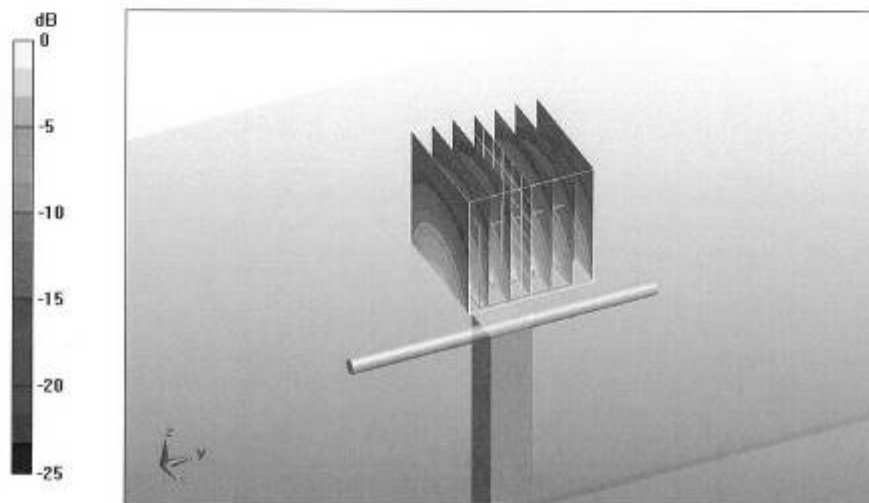
grid: dx=5mm, dy=5mm, dz=5mm

Reference Value = 94.5 V/m; Power Drift = 0.015 dB

Peak SAR (extrapolated) = 29.5 W/kg

**SAR(1 g) = 13 mW/g; SAR(10 g) = 5.97 mW/g**

Maximum value of SAR (measured) = 17 mW/g



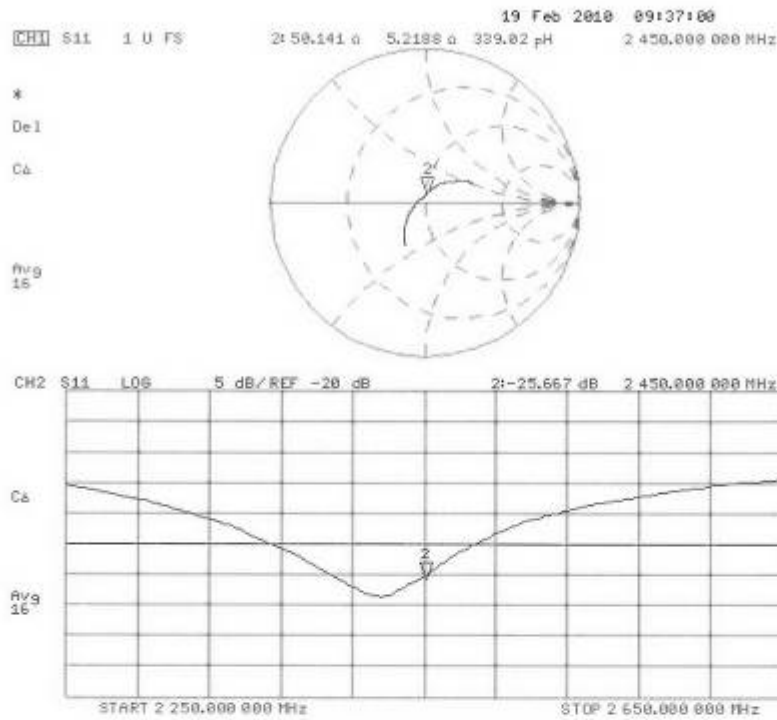
0 dB = 17mW/g

TA Technology (Shanghai) Co., Ltd.  
Test Report

Report No. RZA1104-0497SAR01R1

Page 55 of 65

Impedance Measurement Plot for Body TSL



TA Technology (Shanghai) Co., Ltd.  
Test Report

Report No. RZA1104-0497SAR01R1

Page 56 of 65

ANNEX F: DAE4 Calibration Certificate

Calibration Laboratory of  
Schmid & Partner  
Engineering AG  
Zeughausstrasse 43, 8004 Zurich, Switzerland



S Schweizerischer Kalibrierdienst  
C Service suisse d'étalonnage  
S Servizio svizzero di taratura  
S Swiss Calibration Service

Accredited by the Swiss Accreditation Service (SAS)  
The Swiss Accreditation Service is one of the signatories to the EA  
Multilateral Agreement for the recognition of calibration certificates

Accreditation No.: SCS 108

Client TA - SH (Auden)

Certificate No: DAE4-871\_Nov10

CALIBRATION CERTIFICATE

Object DAE4 - SD 000 D04 BJ - SN: 871

Calibration procedure(s) QA CAL-06.v22  
Calibration procedure for the data acquisition electronics (DAE)

Calibration date: November 18, 2010

This calibration certificate documents the traceability to national standards, which realize the physical units of measurements (SI).  
The measurements and the uncertainties with confidence probability are given on the following pages and are part of the certificate.

All calibrations have been conducted in the closed laboratory facility: environment temperature ( $22 \pm 3$ )°C and humidity < 70%.

Calibration Equipment used (M&TE critical for calibration)

Primary Standards	ID #	Cal Date (Certificate No.)	Scheduled Calibration
Keithley Multimeter Type 2001	SN: 0810278	28-Sep-10 (No:10376)	Sep-11
Secondary Standards	ID #	Check Date (in house)	Scheduled Check
Calibrator Box V1.1	SE UMS 006 AB 1004	07-Jun-10 (in house check)	In house check: Jun-11

Calibrated by:	Name Andrea Guntli	Function Technician	Signature 
Approved by:	Fin Bornholt	R&D Director	

Issued: November 18, 2010

This calibration certificate shall not be reproduced except in full without written approval of the laboratory.



# TA Technology (Shanghai) Co., Ltd.

## Test Report

Report No. RZA1104-0497SAR01R1

Page 57 of 65

**Calibration Laboratory of  
Schmid & Partner  
Engineering AG**  
Zeughausstrasse 43, 8004 Zurich, Switzerland



**S** Schweizerischer Kalibrierdienst  
**C** Service suisse d'étalonnage  
**S** Servizio svizzero di taratura  
**S** Swiss Calibration Service

Accredited by the Swiss Accreditation Service (SAS)  
The Swiss Accreditation Service is one of the signatories to the EA  
Multilateral Agreement for the recognition of calibration certificates

Accreditation No.: **SCS 108**

### Glossary

**DAE** data acquisition electronics  
**Connector angle** information used in DASY system to align probe sensor X to the robot coordinate system.

### Methods Applied and Interpretation of Parameters

- **DC Voltage Measurement:** Calibration Factor assessed for use in DASY system by comparison with a calibrated instrument traceable to national standards. The figure given corresponds to the full scale range of the voltmeter in the respective range.
- **Connector angle:** The angle of the connector is assessed measuring the angle mechanically by a tool inserted. Uncertainty is not required.
- The following parameters as documented in the Appendix contain technical information as a result from the performance test and require no uncertainty.
  - **DC Voltage Measurement Linearity:** Verification of the Linearity at +10% and -10% of the nominal calibration voltage. Influence of offset voltage is included in this measurement.
  - **Common mode sensitivity:** Influence of a positive or negative common mode voltage on the differential measurement.
  - **Channel separation:** Influence of a voltage on the neighbor channels not subject to an input voltage.
  - **AD Converter Values with inputs shorted:** Values on the internal AD converter corresponding to zero input voltage
  - **Input Offset Measurement:** Output voltage and statistical results over a large number of zero voltage measurements.
  - **Input Offset Current:** Typical value for information; Maximum channel input offset current, not considering the input resistance.
  - **Input resistance:** Typical value for information: DAE input resistance at the connector, during internal auto-zeroing and during measurement.
  - **Low Battery Alarm Voltage:** Typical value for information. Below this voltage, a battery alarm signal is generated.
  - **Power consumption:** Typical value for information. Supply currents in various operating modes.

# TA Technology (Shanghai) Co., Ltd.

## Test Report

Report No. RZA1104-0497SAR01R1

Page 58 of 65

### DC Voltage Measurement

A/D - Converter Resolution nominal

High Range: 1LSB = 6.1  $\mu$ V, full range = -100...+300 mV

Low Range: 1LSB = 61 nV, full range = -1.....+3mV

DASY measurement parameters: Auto Zero Time: 3 sec; Measuring time: 3 sec

Calibration Factors	X	Y	Z
High Range	404.757 $\pm$ 0.1% (k=2)	404.740 $\pm$ 0.1% (k=2)	405.181 $\pm$ 0.1% (k=2)
Low Range	3.98219 $\pm$ 0.7% (k=2)	3.93489 $\pm$ 0.7% (k=2)	3.96831 $\pm$ 0.7% (k=2)

### Connector Angle

Connector Angle to be used in DASY system	90.0 $^{\circ}$ $\pm$ 1 $^{\circ}$
---	------------------------------------

# TA Technology (Shanghai) Co., Ltd.

## Test Report

Report No. RZA1104-0497SAR01R1

Page 59 of 65

### Appendix

#### 1. DC Voltage Linearity

High Range	Reading ( $\mu\text{V}$ )	Difference ( $\mu\text{V}$ )	Error (%)
Channel X + Input	200001.2	-1.56	-0.00
Channel X + Input	20000.71	0.71	0.00
Channel X - Input	-19997.87	1.63	-0.01
Channel Y + Input	199994.3	1.99	0.00
Channel Y + Input	19998.92	-1.08	-0.01
Channel Y - Input	-20000.26	-0.76	0.00
Channel Z + Input	200009.2	-1.04	-0.00
Channel Z + Input	19998.70	-1.10	-0.01
Channel Z - Input	-20000.16	-0.76	0.00

Low Range	Reading ( $\mu\text{V}$ )	Difference ( $\mu\text{V}$ )	Error (%)
Channel X + Input	2000.1	0.16	0.01
Channel X + Input	199.58	-0.52	-0.26
Channel X - Input	-200.79	-0.89	0.45
Channel Y + Input	1999.9	-0.03	-0.00
Channel Y + Input	199.45	-0.55	-0.27
Channel Y - Input	-200.31	-0.41	0.21
Channel Z + Input	2000.1	0.33	0.02
Channel Z + Input	199.13	-0.77	-0.38
Channel Z - Input	-201.47	-1.37	0.69

#### 2. Common mode sensitivity

DASY measurement parameters: Auto Zero Time: 3 sec; Measuring time: 3 sec

	Common mode Input Voltage (mV)	High Range Average Reading ( $\mu\text{V}$ )	Low Range Average Reading ( $\mu\text{V}$ )
Channel X	200	14.25	12.86
	- 200	-12.68	-14.21
Channel Y	200	-10.04	-10.39
	- 200	9.20	9.17
Channel Z	200	-0.85	-1.40
	- 200	-0.34	-0.31

#### 3. Channel separation

DASY measurement parameters: Auto Zero Time: 3 sec; Measuring time: 3 sec

	Input Voltage (mV)	Channel X ( $\mu\text{V}$ )	Channel Y ( $\mu\text{V}$ )	Channel Z ( $\mu\text{V}$ )
Channel X	200	-	2.85	0.69
Channel Y	200	2.41	-	2.73
Channel Z	200	2.54	0.73	-

# TA Technology (Shanghai) Co., Ltd.

## Test Report

Report No. RZA1104-0497SAR01R1

Page 60 of 65

### 4. AD-Converter Values with inputs shorted

DASY measurement parameters: Auto Zero Time: 3 sec; Measuring time: 3 sec

	High Range (LSB)	Low Range (LSB)
Channel X	15920	15517
Channel Y	16171	16732
Channel Z	15803	16474

### 5. Input Offset Measurement

DASY measurement parameters: Auto Zero Time: 3 sec; Measuring time: 3 sec

Input 10M $\Omega$

	Average ( $\mu$ V)	min. Offset ( $\mu$ V)	max. Offset ( $\mu$ V)	Std. Deviation ( $\mu$ V)
Channel X	0.03	-2.35	0.86	0.43
Channel Y	-0.50	-1.49	-0.49	0.38
Channel Z	-0.92	-2.21	0.14	0.44

### 6. Input Offset Current

Nominal Input circuitry offset current on all channels: <25fA

### 7. Input Resistance (Typical values for information)

	Zeroing (k $\Omega$ m)	Measuring (M $\Omega$ m)
Channel X	200	200
Channel Y	200	200
Channel Z	200	200

### 8. Low Battery Alarm Voltage (Typical values for information)

Typical values	Alarm Level (VDC)
Supply (+ Vcc)	+7.9
Supply (- Vcc)	-7.6

### 9. Power Consumption (Typical values for information)

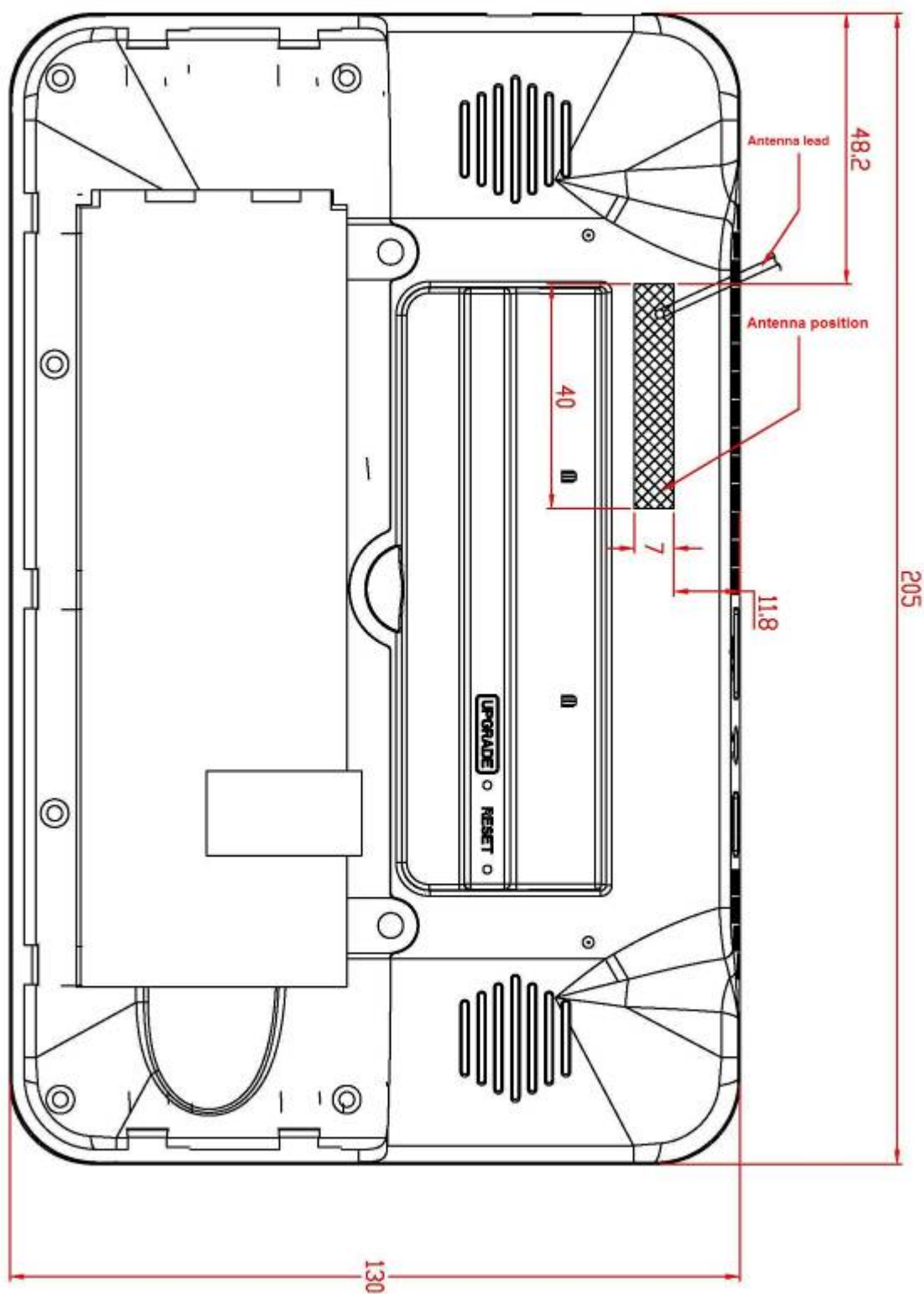
Typical values	Switched off (mA)	Stand by (mA)	Transmitting (mA)
Supply (+ Vcc)	+0.01	+6	+14
Supply (- Vcc)	-0.01	-8	-9

## ANNEX G: The EUT Appearances



3-a: Front side





3-b: Back side

Picture 3: Constituents of the EUT



Picture 4: Test position 1



Picture 5: Test position 2





**Picture 6: Test position 3**

(This is not the most conservative antenna – to – user distance at edge mode. According to KDB 447498 4) ii) (2) –SAR is required only the edge with the most conservative exposure conditions, No SAR)



**Picture 7: Test position 4**



# TA Technology (Shanghai) Co., Ltd.

## Test Report

Report No. RZA1104-0497SAR01R1

Page 65 of 65

(This is not the most conservative antenna – to – user distance at edge mode. According to KDB 447498 4) ii) (2) –SAR is required only the edge with the most conservative exposure conditions, No SAR)



Picture 8: Test position 5