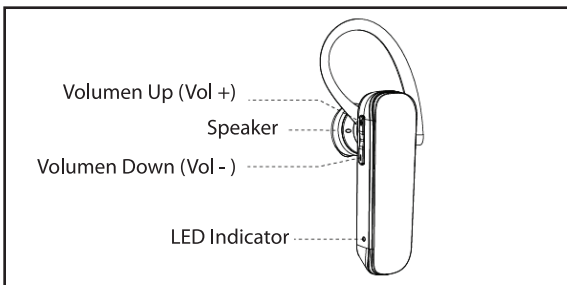
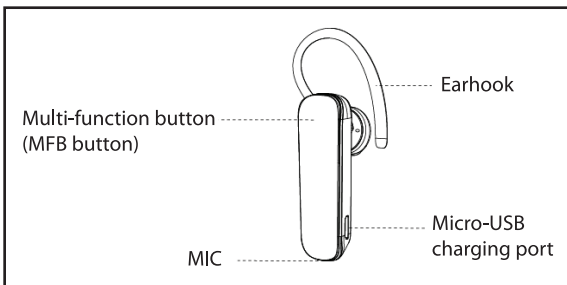


Bluetooth Headset BH703 Use Manual

LANYA ELECTRONIC Co., Ltd.

Appearance of the BT-MH Mono Bluetooth Headset



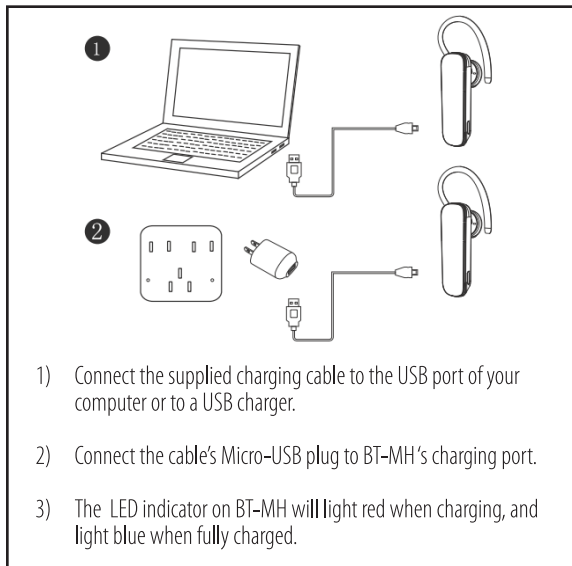
Charging:

Power input: USB 5V

Charging time: Approx. 2 hours

Talk time: Approx. 5 hours

Standby time: Approx. 120 hours.



Remarks:

When battery level is low, LED indicator will flash red and an alert tone will be heard by user. If the battery level runs out, the BT-MH will turn-off automatically. User should stop using the BT-MH, and charge the headset for next use.

Turn on/off

- 1) Turn on When headset is off, press and hold MFB button for 6 seconds to turn on the unit.
- 2) Turn off When headset is on, press and hold MFB button for 5 seconds to turn off the unit.
- 3) Auto off: Once BT-MH is not connecting to a device for 10 minutes it will turn itself off automatically.

Pairing

- 1) To enter pairing mode, make sure the headset is turned off, press and hold the MFB button for 7 seconds, the LED indicator will flash red and blue alternatively.
- 2) Follow instructions of your bluetooth-enabled devices and pair with the headset. Once pairing is successful, there will be a notification tone heard, and the LED indicator will flash blue every 5 seconds.

Remarks: The pairing mode will last for 3 minutes, after that the BT-MH headset will back to stand by mode. If require PIN code for pairing, default : 0000.

Operations

- 1) Receive a call: Once there is an incoming call, an indication ring tone will be heard, short press MFB button to pick the call.
- 2) Ends a Call: User can press the MFB button to end a call.

- 3) Reject a Call: When user wants to reject an incoming call, press and hold for 2 second to reject a call.
- 4) Volume control: During a call, press "Vol +" to increase the Volume, or press "Vol -" to reduce the Volume. (There will be a short tone heard if the maximum Volume or minimum Volume is reached)
- 5) MIC mute during a call: User can press and hold "Vol -" button for 2 seconds to toggle MIC mute function during a call. (When MIC Mute is on during a call, the LED indicator will light red until the call ends.)
- 6) Switching between BT-MH and the Bluetooth enabled phones: If users don't want to use the BT-MH headset during a call, user can press and hold the MFB button for 2 second to switch the call to your Bluetooth enabled phones. By same operation, user can switch call back to BT-MH headset.
- 7) Redial: When BT-MH is during a standby mode, double click the MFB button will redial the last dialed phone number.
- 8) Call waiting: When user is already on a call, if there is another incoming call, by press and hold the MFB button for 1 second, and release the MFB button, user can take the new incoming call and keep the first call in waiting. By same operation, user can switch between the two calls. And user can always end current call by short pressing the MFB button anytime.

- 9) Voice Call/command: During standby mode, press and hold "Vol -" button to enter voice call/command interface of the Bluetooth enabled devices.
- 10) Music playing: User can use BT-MH to listen to music with the A2DP profile. Simply play music on your Bluetooth enabled devices, the music will be playing directly on the BT-MH.
Once music is playing, user could press MFB button to play/pause the music during stand-by mode.
- 11) Next sound/previous song: When music is playing, user can press and hold "Vol + " button to play back the previous song, or press and hold "Vol - " button to play next song on the play list.
- 12) Auto-connections after connection lost: If the connection is lost, BT-MH headset will automatically connect to last connected device until the connection has been lost for 10 minutes.
- 13) Auto-connect at startups: BT-MH will connect to the last connected devices automatically once it is power-on. If the last connected device is not available, it will enter the stand-by mode.
- 14) Memory: BT-MH headset can remember up to 4 devices, which the 4 devices in the memory can connect to BT-MH headset without re-pairing process.

This equipment has been tested and found to comply with the limits for a Class B digital device, pursuant to part 15 of the FCC Rules. These limits are designed to provide reasonable protection against harmful interference in a residential installation. This equipment generates, uses and can radiate radio frequency energy and, if not installed and used in accordance with the instructions, may cause harmful interference to radio communications. However, there is no guarantee that interference will not occur in a particular installation. If this equipment does cause harmful interference to radio or television reception, which can be determined by turning the equipment off and on, the user is encouraged to try to correct the interference by one or more of the following measures:

- Reorient or relocate the receiving antenna.
- Increase the separation between the equipment and receiver.
- Connect the equipment into an outlet on a circuit different from that to which the receiver is connected.
- Consult the dealer or an experienced radio/TV technician for help.

Caution: Any changes or modifications to this device not explicitly approved by manufacturer could void your authority to operate this equipment.

This device complies with part 15 of the FCC Rules. Operation is subject to the following two conditions: (1) This device may not cause harmful interference, and (2) this device must accept any interference received, including interference that may cause undesired operation. The device has been evaluated to meet general RF exposure requirement. The device can be used in portable exposure condition without restriction.



Battery Note and Care

- Do not burn or bury batteries.
- Do not puncture or crush.
- Do not disassemble.
- Li-ion batteries must be recycled. Do not dispose of in the trash.
- Use only chargers rated for Li-ion cells. Be sure the charger's voltage and current settings are correct for the battery pack being charged.
- Charge batteries on a fireproof surface and away from flammable items or liquids.
- Batteries should NEVER be left unattended while charging.
- Only adults should charge the batteries.
- Follow the manufacturer's instructions for charging the product.