

PC-200710 WIRELESS COMPACT KEYBOARD AND MOUSE KIT

Welcome to the Perfect Choice world

V 6.3.4

Before using your product it is important that you read this manual



Content

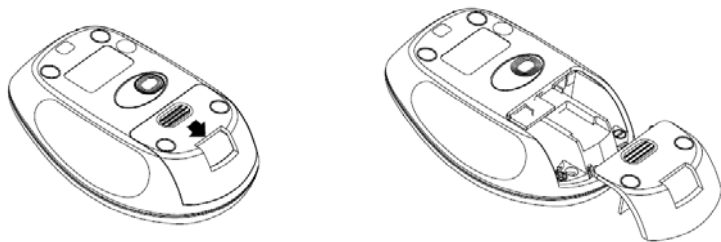
- | | |
|---------------------|---------|
| • Wireless keyboard | 1 piece |
| • Wireless mouse | 1 piece |
| • Wireless receiver | 1 piece |
| • User manual | 1 piece |

Features

- Wireless compact keyboard and mouse.
- Total Wireless freedom.
- 1 000 DPI optical resolution mouse.
- Operation distance up to 10 meters.

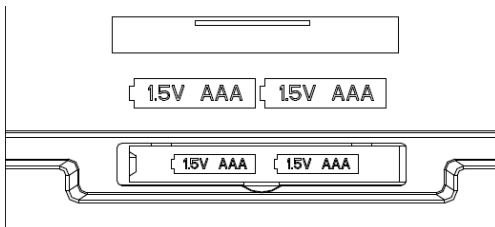
Connection

To install batteries in mouse remove the battery compartment cover, insert the batteries as shown (verify the battery polarity) inside the battery compartment and replace the cover.

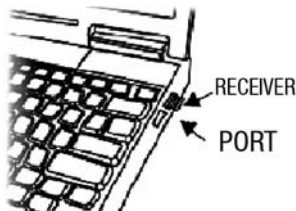


In the same way for keyboard, remove the battery compartment cover on the bottom of the keyboard by squeezing the cover in front the tab to release it.

Insert batteries as shown (verify the battery polarity) inside the battery compartment and replace the cover.



To synchronize the devices you have to take the receiver and insert it to USB port in your computer and wait until system recognize the drivers .



Compatibility

Windows® XP / Vista / 7 / Mac.

Power-Save function

- This mouse is equipped with Power-save function, the optical led of the mouse will be switch off automatically for the power-save purpose, but the pre-condition is that the receiver is disconnected from your computer
- If you don't do any click on the mouse or scroll moving after about 10 seconds, the mouse will come to standby state
- If the mouse is in standby about 30 minutes the optical led will switch off. To wake it up, you only have to click any button

Troubleshooting

The keyboard or mouse does not work

- Be sure that receiver is correctly plugged into USB port or change USB port.
- Change batteries for new ones.
- The work distance between keyboard or mouse with receiver has to be 10 m maximum on air line without walls that obstruct the signal.

Safety and Care Information

- Avoids to spill liquids or water in your equipment, can cause badly operation
- Handled carefully. Do not throw it or strike.
- Keep your devices away of earth and dust.
- Clean your equipment with a dry cloth.

Technical specifications

Keyboard:	
Power Source 3 VDC (1,5 Vcc x 2 AAA batteries):	
Operation current:	10 mA
Current in mode 1:	0,2 mA
Mouse:	
Power Source 3 VDC (1,5 Vcc x 2 AAA batteries):	
Operation current:	0 mA
Current in mode 1:	1,2 mA
Current in mode 2:	0,35 mA
Resolution:	1 000 DPI
Receiver:	
Power Source 5 VDC (1,5 Vcc x 2 AAA batteries):	
Operation current:	100 mA
Operation frequency:	2,4 GHz
Operation distance range:	10 m
Measures:	
Keyboard:	28,3 x 12,2 x 2,4 cm
Mouse:	5,9 x 8,9 x 3,6 cm
Receiver:	4 x 1,5 x 0,7 cm
The technical and electrical characteristics offered here correspond to typical units and could change without previous warning with the purpose of to provide better equipment.	
Regulatory Information	



Any changes or modifications not expressly approved by Master Choice could void the user’s author–
ity to operate this device.
No serviceable parts included.

This device complies with part 15 of the FCC Rules. Operation is subject to the following two conditions:

- 1 This device may not cause harmful interference.
- 2 This device must accept any interference received, including interference that may cause undesired operation.

Imported by: Master Choice S.A. de C.V.
José Guadalupe Gallo No 8 490
Col. Agua Blanca industrial Zip 45 235
Zapopan, Jalisco, México.
R.F.C. MCH-920810-FE6
Country of origin: China

FCC Statement

This device complies with Part 15 of the FCC Rules. Operation is subject to the following two conditions:

- (1) This device may not cause harmful interference, and
- (2) This device must accept any interference received, including interference that may cause undesired operation.

Note: The manufacturer is not responsible for ANY interference, for example RADIO or TV interference, caused by unauthorized modifications to this equipment. Such modifications could void the user's authority to operate the equipment.

Notas

WARRANTY POLICY



Master Choice, S.A. of C.V. warrants this product by the term of two years (24 months) in all parts and manpower against any defect of manufacture and operation as of the date of acquisition and becomes person in charge of the expenses of the transportation of the product that are derived from the fulfillment of the warranty.

CONDITIONS

1. - In order to make this warranty valued you have to provide all the information required in the part of DATA of this policy and going with the product to the establishment where it was acquired (Only within the term indicated by the establishment). At any time later and within the term of this warranty, you can call to our department of Technical Support: Guadalajara, Mexico and Monterrey 47 77 08 53 all other regions 01 800 PCHOICE (724-6423) soporte@perfectchoice.com.mx to indicate you the procedure to make this warranty valued.
2. - Master Choice, S.A. of C.V. is committed to repair or to replace that entire product that shows our brand Perfect Choice® without any charge for the consumer.
3. The response time will not be greater to 30 natural days as of the date of reception of the product in our department of Technical Support in the facilities of Master Choice, S.A. of C.V.

THIS WARRANTY IS NOT BEEN VALID IN THE FOLLOWING CASES

1. When the product has been used under conditions different from normal use.
2. When the product has not been operated according to instructive.
3. When the product has been altered or repaired by unauthorized people by Master Choice, S.A. of C.V.
4. When the product has suffered damages caused by external agents or natural disasters outside the control of Master Choice S.A. of C.V like voltage variations, electrical discharges, earthquakes floods, hurricanes either any other similar, as well as damages caused by accidental or intentional knocks, or is exposed to injurious elements for the product like the water, acids, fire or any other similar.
5. False cable contacts caused by tugs or excessive stretching

DATA For Product

Product: _____

Brand: _____ Model: _____

Date of acquisition: _____ Rubber stamp

For Dealer

Company name: _____

Address: _____

Residential development: _____ City: _____

State: _____ Zip code: _____

You can buy part, consumable and accessory components in the establishment where bought this product or with the distributors authorized. For more information consults to our department of Sales or Technical Support Technical support: 01 800 PCHOICE (724-6423) Sales: 01 800 148 48 48. Importer: Master Choice, S.A. de C.V. José Guadalupe Gallo # 8 490 Col. Agua Blanca Industrial zip code: 45 235 Zapopan, Jalisco, México Phone (33) 32 83 15 00; 01 800 PCHOICE (724-6423)