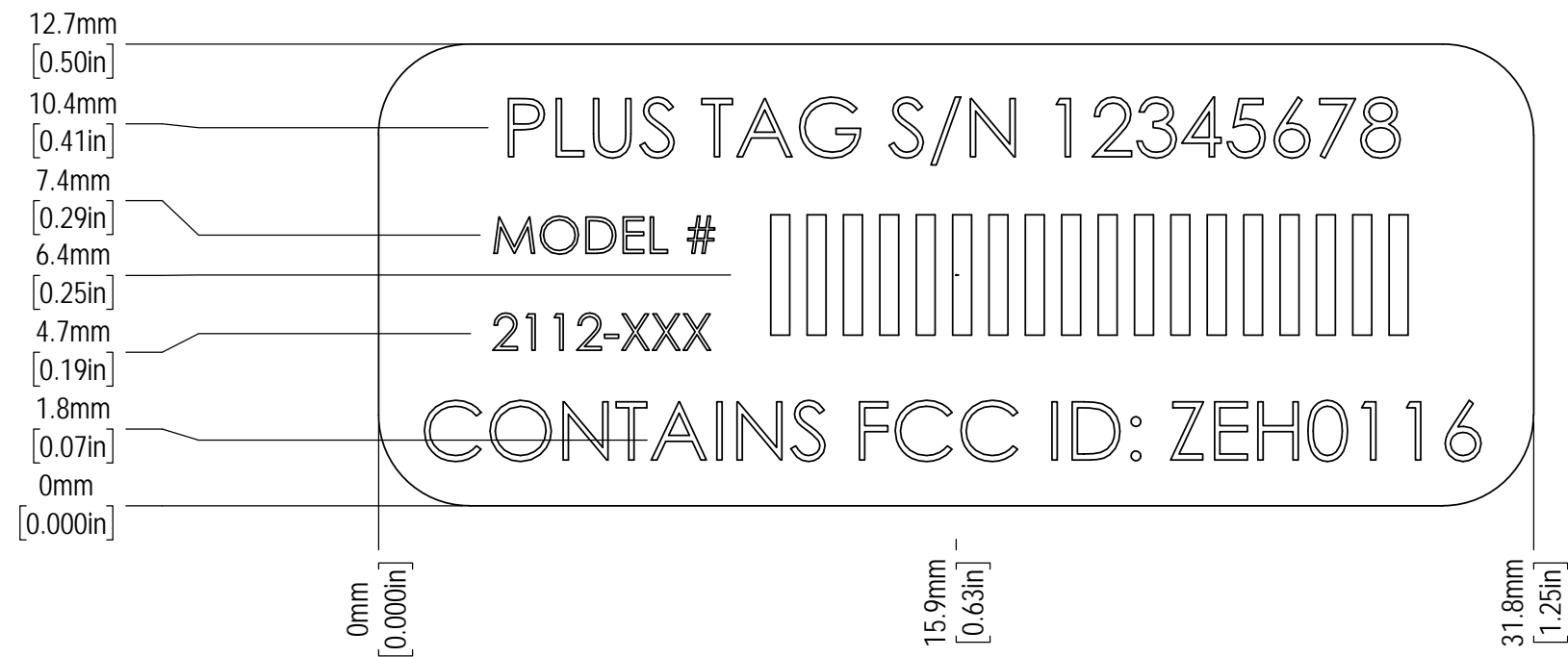
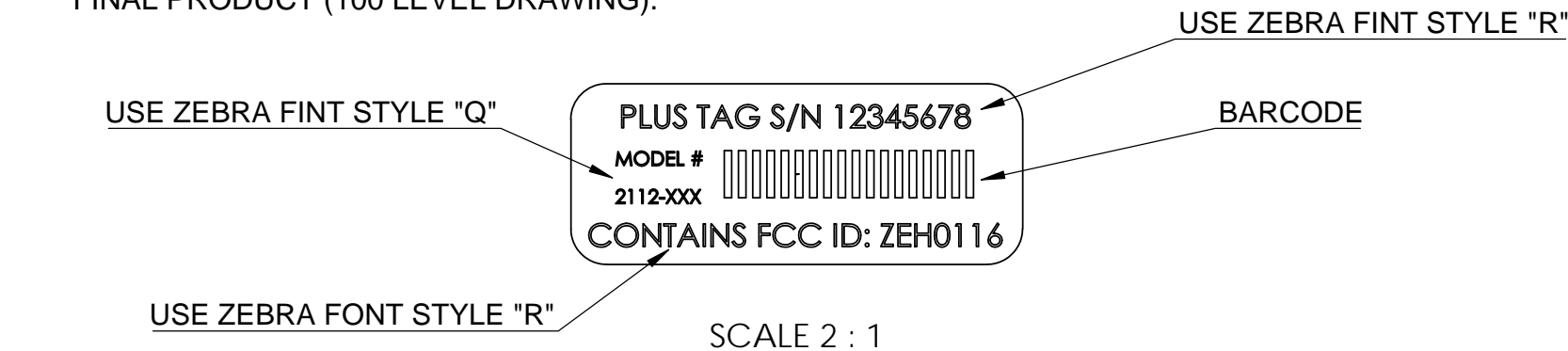


- NOTES:
- 1. DRAWING IS TO PROVIDE A TEMPLATE OF REQUIRED INFORMATION FOR FINAL TAG ASSEMBLIES THAT USE THE 2112 TAG MODULE CIRCUIT. IF THE FINAL TAG REQUIRES A DIFFERENT GRAPHICS OR OUTLINE FORMAT THE INFORMATION LISTED MUST BE INCLUDED.
  - 2. TO BE PRINTED ON A ZEBRA THERMAL TRANSFER PRINTER 105SL 300dpi VERSION (P/N 10500-3001-0000 OR EQUIVALENT). USE PLUS P/N 044-0017-9 FOR PRINTER RIBBON.
  - 3. BAR-CODE TO BE CODE 128A WITH A MINIMUM BAR HEIGHT OF 0.14 AND A BAR RATIO OF 3:1 OR A QR CODE FORMAT.
  - 4. DUE TO CONSTRAINTS RESULTING FROM THE PWA ASSEMBLY AND SERIALIZATION PROCESS THE TAG UNIT SERIALIZATION DOES NOT FOLLOW THE CONCEPT SPECIFIED IN PLUS DOCUMENT NUMBER 450-0005 "SERIALIZATION GUIDELINES" WHICH IS TYPICAL FOR PLUS LOCATION ASSEMBLIES. THE PWA IS PROGRAMMED WITH AN 8-DIGIT HEX CHARACTER STRING. THOSE EIGHT CHARACTERS ARE TO PRINTED ON THE SERIAL NUMBER LABEL IN BOTH BAR-CODE AND HUMAN READABLE FORM.
  - 5. PRINTED LABEL IS AN OUTPUT OF SOFTWARE P/N 150-0067 "Software, PLUS TAG Functional Test"
  - 6. SPECIFIC INFORMATION FOR MODEL NUMBER ARE LISTED ON THE UNIT ASSEMBLY DRAWING FOR THE FINAL PRODUCT (100 LEVEL DRAWING).





SCALE 5:1  
APPROXIMATE LOCATION  
OF TEXT.

REVISIONS				
ZONE	REV.	DESCRIPTION	DATE	APPROVED
~	A	INITIAL RELEASE	2016/2/22	JA



RoHS COMPLIANCE NOTE:

ALL MATERIALS, INKS, ADHESIVES, OVERLAMINATES AND PROCESSES USED TO PRODUCE THIS LABEL SHALL COMPLY WITH THE EU DIRECTIVE 2002/95/EC ON THE RESTRICTION OF THE USE OF CERTAIN HAZARDOUS SUBSTANCES IN ELECTRICAL AND ELECTRONIC EQUIPMENT (RoHS). SUPPLIER SHALL ALSO RETAIN DOCUMENTATION SUPPORTING RoHS COMPLIANCE ACCORDING TO THEIR STANDARD OPERATING PROCEDURES. ANY DEVIATIONS FROM THIS REQUIREMENT MUST BE OBTAINED IN WRITING FROM PLUS LOCATION SYSTEMS.

UNLESS OTHERWISE SPECIFIED		NAME	DATE	 6767 OLD MADISON PIKE NW SUITE 310 HUNTSVILLE, AL 35806 USA	
PRIMARY DIMENSIONS ARE IN MILLIMETERS TOLERANCES: ANGULAR: MACH $\pm 0.5^{\circ}$ BEND $\pm 1.0^{\circ}$ ONE PLACE DECIMAL $\pm 0.3$ TWO PLACE DECIMAL $\pm 0.15$ THREE PLACE DECIMAL $\pm 0.015$	SECONDARY DIMENSIONS ARE IN INCHES TOLERANCES: ANGULAR: $\pm 0.5^{\circ}$ TWO PLACE DECIMAL $\pm .01$ THREE PLACE DECIMAL $\pm .005$ FOUR PLACE DECIMAL $\pm .0005$	DESIGNED BY JOE ANDERSON	2/22/2016		
PROPRIETARY AND CONFIDENTIAL  THE INFORMATION CONTAINED IN THIS DRAWING IS THE SOLE PROPERTY OF PLUS LOCATION SYSTEMS. ANY REPRODUCTION IN PART OR AS A WHOLE WITHOUT THE WRITTEN PERMISSION OF PLUS LOCATION SYSTEMS IS PROHIBITED.	MATERIAL MAKE FROM P/N 044-0037-9	DRAWN BY JOE ANDERSON	2/22/2016	TITLE: Template PLUS 2111 TAG Module	
	FINISH	COMMENTS:		SIZE <b>B</b>	PART NUMBER <b>320-0315</b>
	DO NOT SCALE DRAWING 			REV <b>A</b>	
		SCALE: 5:1	A-01	SHEET 1 OF 1	