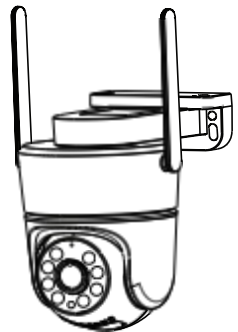


Quick Setup Guide

Wireless IP Camera



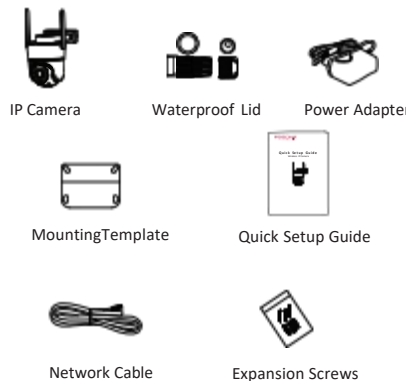
To view this guide in other languages (e.g. Nederlands, Deutsch, Français, Español), and for detailed manuals, tools, etc., please visit foscam.com/downloads.

V2.0
305503001043

Setting Up Your Foscam Security Camera

1 Getting Started

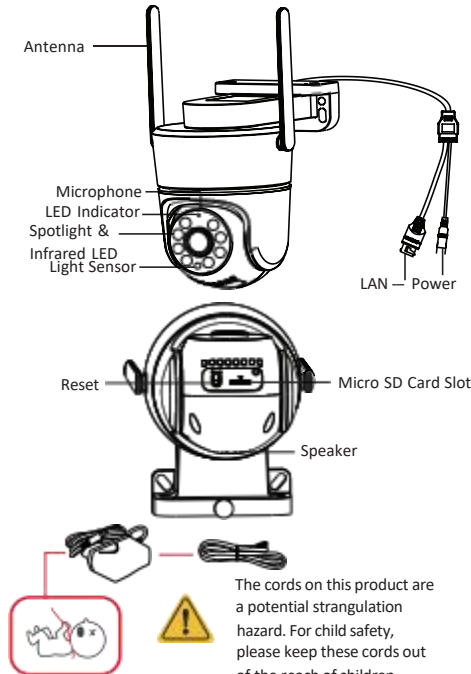
■ Package Contents



■ Security Tips

- Please change the camera's password regularly, using a combination of numbers, letters and special characters.
- We recommend that you regularly update your camera with the latest available software and firmware to ensure the best experience with your camera.
- Please ensure that the proper power supply is used before using the camera.
- Do not use the device where wireless devices are not allowed.
- Do not disassemble, repair or modify the product.
- Do not use the product if the casing has been broken. Danger of electric shock.
- Please install the camera securely using the screws provided.
- Change your default port to a greater range to help ensure the safety of your connection.
- To avoid the risk of fire or electric shock, please keep your camera connectors in a cool, dry place.
- Please keep the camera out of reach of small children.
- Operating Temperature: 0°C ~40°C (-4°F ~113°F).

2 Physical Description



3 Setting Up Your Camera: Connection via the Foscam App (Recommended)

■ Before You Get Started

Scan the QR code below to download and install the Foscam APP.



To ensure a smoother video experience on your smart phone, it is recommended that your smart phone meet the following specifications:

- iOS: version 11 or higher.
- Android: 5.0 or higher, using a device with a Graphics Processing Unit (GPU).

Note: For the best experience, please update the APP to the latest version!

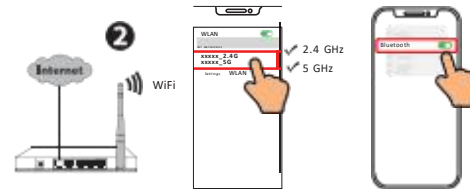
■ WiFi Connection

1. Plug the power adapter into the camera, and please wait for a few seconds until hearing the "Ready for WiFi configuration"



Tips: If you didn't hear the voice prompt, press and hold reset for about 3~5 seconds to reset the camera.

2. Make sure that your smartphone is connected to your WiFi router and turn on the system Bluetooth.

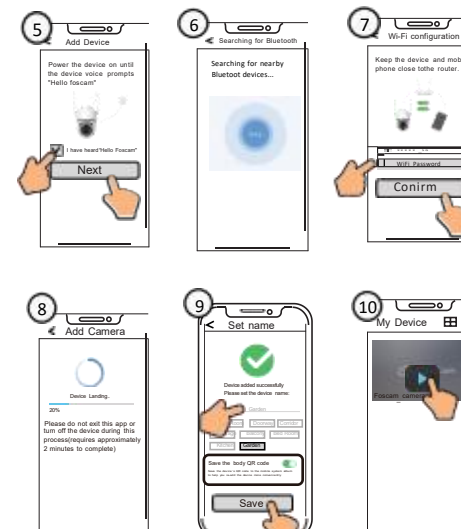
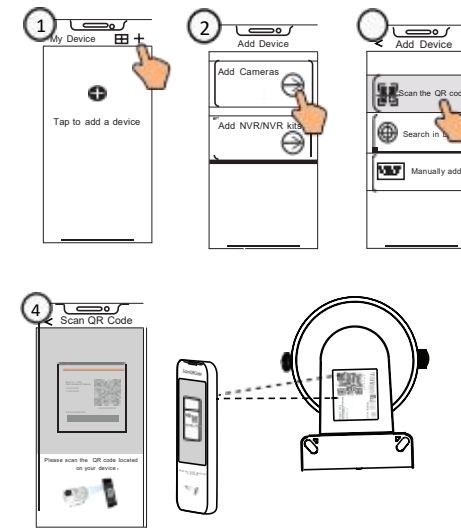


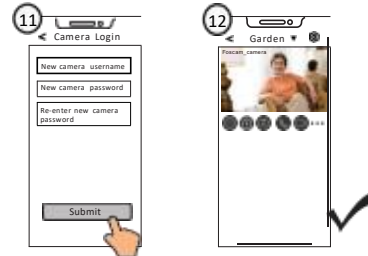
Note: Before connecting the camera via Bluetooth, ensure that the system's Bluetooth is turned on.

3. Open the Foscam APP and please register a Foscam account, or sign in if you have one already.



4. Follow the steps below:





Note: If the adding process fails, please reset your camera and try adding again according to the above method.

4 PC Access Your Camera

■ Foscam VMS

Foscam VMS is a new tool for PCs. It does not require plug-ins and is compatible with Windows & Mac, supporting all Foscam HD cameras and up to 36 cameras at the same time. If you would like to manage multiple cameras, we suggest you install Foscam VMS. You can download the "Foscam VMS" Windows version from foscam.com/vms, and can download the "Foscam VMS" Mac version from the APP store:

<https://apps.apple.com/cn/app/foscamvms/id1521202507?mt=12>

Note: For the best experience, please update Foscam VMS to the latest version!

Add the IP Camera

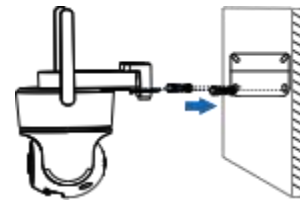
1. Run Foscam VMS, then create a local administrator account or a Foscam account and login.
2. Tap the "+" icon on the Foscam VMS and follow the setup wizard to add your camera.

Please visit foscam.com/downloads to view the user manual and for additional detailed steps.

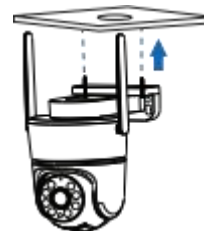


5 Hardware Installation

■ Method A: Wall mounted



■ Method B: Ceiling mounted



Point the camera at the desired location and use the screws provided to mount it.

Please Note:

Ensure that the rain or water will not reach the connector ports at the end of the pigtail wiring. These connectors are not weather-resistant.

6 Important Notice

■ Camera Username & Password

The camera username & password are used to access and manage your camera. Having a strong password can significantly improve the security of your camera.

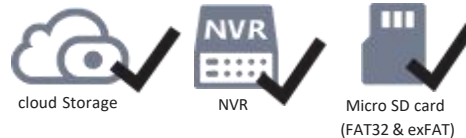
If you have forgotten either of them, please press the "Reset" button.



Press and hold the "Reset" button for 3-5 seconds until hearing "reset succeed".

■ Storage Media

Your camera supports cloud, NVR (Network Video Recorder), and Micro SD card (supports FAT32 and exFAT format) storage formats.



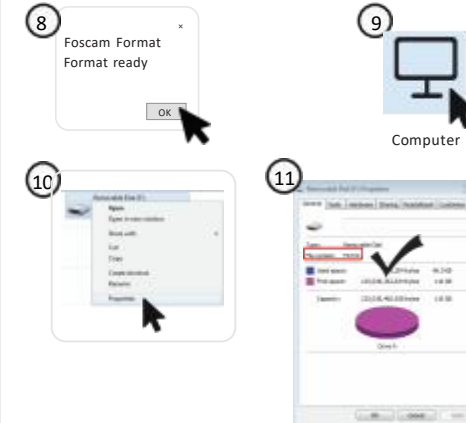
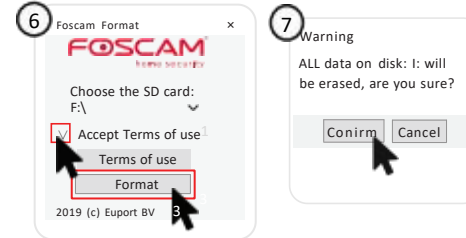
■ How to format MicroSD card, please follow the steps below:



4. Scan the QR code below to download the "FoscamFormat" Tool
5. Open the "FoscamFormat" Tool



foscam.com/downloads/app_software.html



7 Product Performance

WLAN frequency range: 2400MHz - 2483.5MHz and 5725MHz - 5850MHz
Maximum transmission power: < 18dBm
Wireless Standard: IEEE802.11b/g/n/ax (2.4GHz) IEEE802.11a/n/ac/ax (5GHz)
Power Supply: DC 12V 1.0A 12W

8 FCC Statement

To assure continued compliance, any changes or modifications not expressly approved by the party responsible for compliance could void the user's authority to operate this equipment.

This equipment complies with Part 15 of the FCC Rules. Operation is subject to the following two conditions:

- (1) This device may not cause harmful interference, and
- (2) This device must accept any interference received, including interference that may cause undesired operation.

NOTE: This equipment has been tested and found to comply with the limits for a Class B digital device, pursuant to part 15 of the FCC rules. These limits are designed to provide reasonable protection against harmful interference in a residential installation. This equipment generates, uses and can radiate radio frequency energy and, if not installed and used in accordance with the instructions, may cause harmful interference to radio communications.

However, there is no guarantee that interference will not occur in a particular installation. If this equipment does cause harmful interference to radio or television reception, which can be determined by turning the equipment off and on, the user is encouraged to try to correct the interference by one or more of the following measures:

- Reorient or relocate the receiving antenna.
- Increase the separation between the equipment and receiver.
- Connect the equipment into an outlet on a circuit different from that to which the receiver is connected.
- Consult the dealer or an experienced radio/TV technician for help.

FCC Radiation Exposure Statement:

The equipment complies with FCC Radiation exposure limits set forth for uncontrolled environment. This equipment should be installed and operated with minimum distance 20cm between the radiator and your body.

FOSCAM
home security



CE Certificate statement Website:
<https://www.foscam.com/company/ce-certificate.html>

Exporter and Importer Information Opened to Public:
<https://www.foscam.com/company/open-information.html>

Manufacturer: Shenzhen Foscam Intelligent Technology Co., Ltd
Addr: Room 902, Building 1B, Shenzhen International Innovation Valley, Xingke 1st Street, Nanshan District, Shenzhen, Guangdong, China, 518055



FAQS



Foscam APP



Facebook

www.foscam.com

Due to product upgrades and other reasons, this guide may be slow to update, resulting in slight inconsistencies with the official website information. Please take the official website information (www.foscam.com) as the current standard.