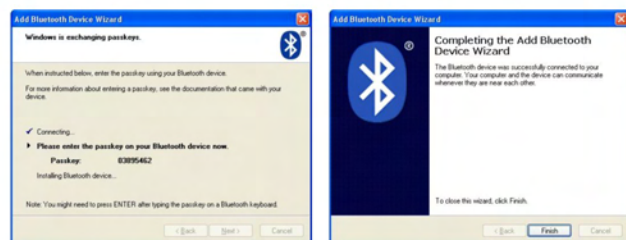
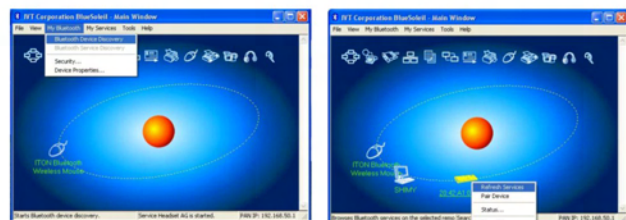


3. Select "Choose a pass key for me", click "Next".
4. Input the pass key (there is no hint when inputting the pass key, so please make sure it is input correctly) and press "Enter", click "Next", the system will finish the installation of the new facility automatically.



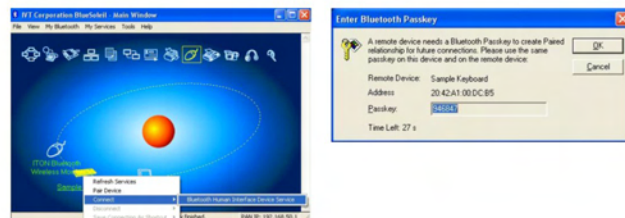
C. Match on IVT Software

1. Make sure that the Bluetooth function is active. Double click the Bluetooth icon, open the IVT Management window, select "Search for Bluetooth facilities" in the column of "my Bluetooth" or click the Round Ball in the middle of the window.



2. Click the Bluetooth Keyboard founded, click the right button for "Refresh Service".

2. Click the Bluetooth Keyboard founded, click the right button for "Refresh Service".
3. Select the Bluetooth Keyboard again, click the right button for "Connect-Bluetooth Input Service", input the stochastic pass key, the system will auto install the HID facility. After that you can use your Bluetooth Keyboard at ease.



FAQ:

- If unable to connect the Bluetooth Keyboard to the computer, or the Keyboard work unconventionally, please try the steps below:
1. Before you install your Bluetooth Keyboard, please make sure you have done the Bluetooth Dongle installation procedure, and the Bluetooth facility is turned on.
 2. Press and release the connect button on the bottom of Bluetooth Keyboard. The blue led light will change into a flashing mode.
 3. Make sure that the Computer is connected to the Bluetooth Keyboard. If they are matched to each other before, then under the Standby State, just need to click "Enter".
 4. Make sure that the keyboard is within the effective range---10M.
 5. Make sure that there's no change of the Bluetooth facility. If anything changed, please kindly rematch.
 6. If your Bluetooth facility is connected to other Bluetooth products, please kindly confirm that the speed of the Bluetooth facility is enough.
 7. Please kindly check the batteries. If they are short of power, please connect the keyboard to your computer for charging by the USB connector.

Specifications:

Size: 108-keys: 42.5cm*13.8cm*1.0cm
 87-keys: 34.5cm*13.8cm*1.0cm
 Materials: soft silicone gel material
 Operation Voltage: 3V DC
 Operation Current: <=14mA
 Standby Current: 2mA
 Transmit Range: 10 meters
 Storage Temperature: -30 ~ 80°C

Federal Communication Commission Interference Statement

This equipment has been tested and found to comply with the limits for a Class B digital device. Pursuant to Part 15 of the FCC Rules. These limits are designed to provide reasonable protection against harmful interference in a residential installation. This equipment generates uses and can radiate radio frequency energy and, if no installed and used in accordance with the instructions, may cause harmful interference to radio or television reception, which can be determined by turning the equipment off and on, the user is encouraged to try to correct the interference by one of the following measures:

- Reorient or relocate the receiving antenna
- Increase the separation between the equipment and receiver.
- Connect the equipment into an outlet on a circuit different from that to which the receiver is connected
- Consult the dealer or an experienced radio/TV technician for help.

This device complies with Part 15 of the FCC Rules. Operation is subject to the following two conditions (1) This device may not cause harmful interference, and (2) this device must accept any interference received, including interference that may cause undesired operation.



Wireless Bluetooth Flexible Keyboard User's Guide



Thanks for purchasing our wireless Bluetooth flexible keyboard; it's with 108 keys standard layout or 87 keys mini layout, including multimedia function keys and FN multimedia keys. This creative and easy-to-use Bluetooth Keyboard will bring you a whole new wireless life experience.

System Requirement

- It is compatible with standard Microsoft Mode.
- IBM compatible PCs running Windows Operating System which supports USB devices.
- If your computer doesn't have built-in Bluetooth function, please make sure that you have the Bluetooth dongle. Bluetooth dongle is not included in this product.

Support cellphone bluetooth system

- Support cell phones based on Mobile 6.0 operation system, such as the Dopod cell phone.
- Support cell phones based on Nokia S60 V3 operation system.
- Support PS3 1.82 version of software and all the higher version of PS3 gaming console. Sony indicates that you can use keyboard and mouse to play (Unreal Tournament 2007) FPS games.
- Support software which is based on Google Android operation system. Because this platform is free of charge, many cell phone manufacturers will adopt it.

Main Features

- Flexible, foldable, roll-up, made by silicone.
- Built-in Li battery chargeable by portable mini USB with charging management indication.
- Use Broadcom 2042 Chipset with wireless Bluetooth 2.0 interface.
- Features comfortable, ergonomic design.
- Use the Bluetooth industry leading software solutions, WIDCOMM BTW (Microsoft officially designated software) Bluetooth software.
- Built-in software solutions with Bluetooth human interface device and comply with the standard version of the Bluetooth SIG Bluetooth 2.0.
- Support SONY PS3.
- Support several cell phone Bluetooth keyboard input at the same time.
- Work with Windows 98, ME, 2000, XP
- Frequency range: 2.4 - 2.4835

- Receiving sensitivity: -75dbm (standard), up to 4dbm as maximum, good for your health with lowest radiates.
- Operation distance: 10m
- Workable environment: -30 ~ 80°C
- Humidity: 30%-90%

Keyboard battery

It is with built-in Li battery, so when it is short of power, please use the USB connector to connect the keyboard to your computer for charging. The "Power" LED light lighting means that it is in charging state, the "Power" LED light will not light when it finish charging.

Connecting the Keyboard to the Dongle.

Before you install your wireless Bluetooth flexible keyboard, please make sure you have done the Bluetooth Dongle installation procedure, such as Widcomm (recommend), IVT or the Microsoft built-in software (can not connect to the Headset).

1. Press the power button on the top corner of the control box, open the keyboard power
2. Press and release the Bluetooth picture button, if the LED light on the left-side control box change to flash mode, then it is in match state.

FN multimedia function

Press the "Fn" key and the red multimedia key at the same time, it can realize according multimedia function for each different multimedia keys.

Match procedure for cell phone bluetooth

Press the power button on the keyboard, it enter a stand by state. Then press the match button on the keyboard, the blue LED light on the keyboard will flash.

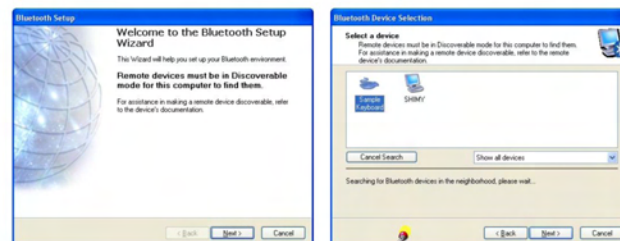
In the meantime, open the cell phone bluetooth function to search for bluetooth equipment. The new equipment "Bluetooth wireless keyboard" will appear, and then add it. Cell phone Input the password according to indication, also keyboard input the same password to match with the cell phone. Finally press the button "Enter" on the keyboard, Then it is successfully matched. The blue LED light will turn off.

Match Procedure for computer

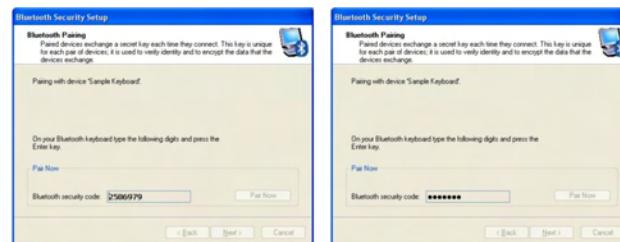
A: Match on Widcomm (recommended)

1. Double click the Icon again, "My Bluetooth Place" pops up; select

"Bluetooth ---Add Bluetooth facility". Click "Next" button In the Setup Guid window.



2. When the system finds the Keyboard, select it and click "Next".
3. Input the stochastic Match Code, and confirm.



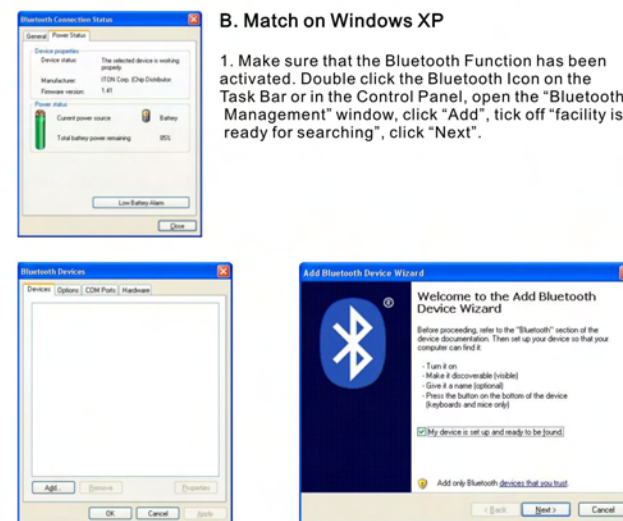
4. Now you can use your keyboard at ease.

Tips:

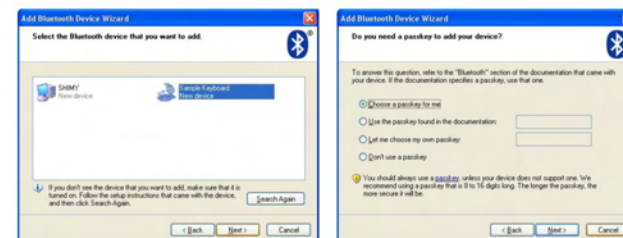
If you are using the Widcomm Bluetooth Software, select the keyboard icon and click the right button of the keyboard and select "Status", then you can check the power status of the batteries and setup alarm for shortage of battery.

B. Match on Windows XP

1. Make sure that the Bluetooth Function has been activated. Double click the Bluetooth icon on the Task Bar or in the Control Panel, open the "Bluetooth Management" window, click "Add", tick off "facility is ready for searching", click "Next".



2. Wait till the keyboard is found, select keyboard and click "Next".



FCC ID: ZDBBRK9200

WARNING:

Changes or modifications to this unit not expressly approved by the party responsible for compliance could void the user's authority to operate the equipment.