

phecdaTM

Manual

User Guide

User Guide.....	1
Foreword.....	4
1.1 About this guide.....	4
Safety Introduction.....	6
Using introduction.....	8
1 Turn on and turn off the computer.....	11
1.1 Turn on the computer.....	11
1.2 Turn off the computer.....	11
1.3 Restart the computer.....	12
1.4 Forced shutdown the computer.....	12
1.5 Using of Display Screen.....	12
2 Product view.....	12
2.1 Front view.....	13
2.2 Bottom view.....	14
2.3 Left side view.....	15
2.4 Right side view.....	15
2.5 Back side view.....	15
3 Power.....	16
3.1 Power adapter.....	16
3.2 Battery.....	16
3.2.1 Battery charging.....	17
3.2.2 Checking the battery charge.....	17
3.2.3 Low battery warning.....	18
3.2.4 Battery storage.....	18
3.3 Power management.....	18
3.3.1 Sleep mode.....	18
3.3.2 Nap mode.....	19
3.3.3 Saving battery power.....	20
3.3.4 Installation and removal of battery.....	20
4 Keyboard and touchpad.....	22
4.1 Using keyboard.....	22
4.2 Using touchpad.....	23
5 Network connections.....	25
5.1 Use of Lan.....	25
5.2 Use of wireless.....	27
5.2.1 Wireless connection.....	27

5.2.2 Knowing the network status.....	28
5.2.3 Bluetooth connection.....	28
6 Storage devices.....	31
6.1 Multi-function card reader.....	31
6.2 Hard drives disk.....	31
7 Daily maintenance.....	33
7.1 Lcd panel.....	33
7.2 Water leak into the notebook.....	33
7.3 Cleaning.....	33
7.4 Outdoor using.....	34
7.5 Data backup.....	34
8 OS and driver application setup.....	36
8.1 OS setup.....	36
8.2 Driver application setup.....	37
8.3 BIOS Management.....	37
8.3.1 Enter into BIOS.....	37
8.3.2 BIOS security.....	37
9 FAQ.....	39
10 Technical specification.....	41
11 Terms and Abbreviations.....	43
12 Hazardous substances in electronic products declaration.....	44

Foreword

Thanks for choosing our product. Please read the catalogue carefully before using the notebook. Please keep the user guide well after reading so that you can find out the solution when you have any questions.

Any questions, please feel free to contact the After Sales center.







OS support:

- Windows 7
- Windows Vista
- Windows XP
- Windows 2003
- Windows 2000
- Windows ME
- Windows 98

Any questions about the OS updating or other spare parts using and the applications, please read the guide or help file, and follow the solutions .

1.1 About this guide

To make sure that you perform certain tasks properly, take note of the following symbols used throughout the manual.

Symbol	Introduction
 Warning	Indicating cautions against high or medium risks
 Attention	Indicating that attention should be paid to light risks;
	Indicating that dangerous operation should be prohibited;
	Indicating that attention should be paid to safety or other contents;
 Tips	Indicating that the tips can solve some problems or you're your time.
 Instruction	Indicating that introduction is the additional Information, the emphasis or complement to the content

Graphical interface element reference definition

Form	Significance
""	The form with quotes"" indicating that all kinds of interface name and the data sheet. For example: click" sure".
>	Using the ">" to set off multi-level menu. For example: Choose "file> "new"> folder", means choosing the "new" 's submenu" folder", and the "new" is under the Menu "file"

Keyboard operating definition

Form	Significance
with""character	Indicating the key name. For example:"Enter"、"Tab"、"Backspace"、"a" etc.
<key1+key2>	Indicating pressing several keys at the same time. For example: <Ctrl+Alt+A>, means pressing the key"Ctrl"、"Alt"、"A"together.
<key1, key2>	Indicating pressing the key1 first, then key2. For example <Alt, F>, means pressing the key"Alt" first,, release and then press the key"F".

Mouse operating definition

Form	Significance
click	Clicking the button on the mouse quickly.
Double click	Double clicking the button on the mouse quickly.
Pull	Keeping Pressing the mouse left button, and moving the mouse at the same time.

Safety Introduction

Using in the safe and right way can avoid the damage or wealth lost to the user, so please read the safety introduction carefully before you using the machine. Please follow the introduction when you have any questions.



Warning



Please don't dismantle or change the machine and the accessories.

You might lose the maintenance right if the machine opened not by the pointed professions. If you want to upgrade the spare parts (for example the memory card, the hard disk etc), please contact the A/S center.



Don't expose the machine to direct sunlight or strong fluorescence.

Please use the machine in an environment where the temperature (0°C~35°C, 35~85% RH) .



Don't touch the machine when your hands are wet.



Don't use the machine in the wash room or other humid environment, avoid the machine to be wet or flushed.

Don't make any hitting, throwing or any other violent action to the machine.



If the product is accidentally dropped or otherwise damaged, immediately stop use and contact with the service center to conduct safety tests.



Please use the machine in the environment of good ventilation. Please be careful not to block the bottom or side vents when using the machine on the couch or soft mat.



Don't put any foreign objects stuffed the interstices between the product components.



Don't use this product, and comply with all the graphics or text instructions at the place of gas stations (service stations) or near flammable materials, chemicals.

Don't store or transport this product and its accessories with flammable liquids, gases or explosive materials in the same box.



Please immediately unplug the power when finding the product smoking or smelling abnormal.

Ask after-sales service centers for help when the smoke or odor disappeared.



Do not place any containers with liquid on the product or on the product side.

When the water is inside the product, please remove the plug immediately, and then ask the after-sales service centers for help.



Please unplug the power when thundering, to avoid the lightning or any other damage to the machine.

Only can use the original accessories, such as the battery, power adaptor etc.



Unauthorized accessories may not meet safety requirements, may lead to failure, and even explosions, fires and other serious accidents, and harm the user and others. Using any other accessories are in violation of the product warranty as well as state laws and regulations, and may also affect the performance of this product.

Don't use the machine while driving.



Don't place the machine on the air bag or the area the air bag can hit, otherwise when the balloon expansion, or rupture, the machine will be hit by strong external forces, and may cause serious harm to persons inside the vehicle.



Please be sure to comply with instructions in the expressly prohibit the use or prohibited areas like the plane, and hospitals.

Don't use the machine near the annex in high-precision electronic equipment for wireless communication; otherwise it may interfere with the operation of electronic equipment.



When using the machine by wireless communications, the radio waves generated by this product may cause interference with implanted medical devices or cause other problems, such as pacemakers, hearing aids, cochlear implants and so on. If You or family members are to use these or other personal medical device, please ask its manufacturer for help.



Attention



Please keep the machine, accessories and installation accessories plastic bags out of reach of children.



Guardian is essential to ensure that children use this product correctly.



Using the machine in the correct posture, or may cause physical discomfort, there arm, shoulder pain and other symptoms.

Feeling sick while using the machine, please stop using it immediately and ask doctor for help.



Due to the human body and physical conditions are different with each other, some one may feel allergic, skin itch, muscle pain or other symptoms.

Using introduction

Ignoring the marked content or misuse of this the machine may lead the machine could not play. Therefore, be sure to comply with the relevant requirements.



Attention



Don't put the machine into the wet bag or other container.



Don't use or store the machine in the environment of multi-gray, wet, dirty, or near magnetic fields, or it might lead to the circuit problem.



The products and the power adapter will be hot during use, if the temperature is acceptable by bare hands, then it is normal.



Only use the original or approved batteries, power cord and adapter.



If moving the machine, please waiting for 1 minute after disconnecting the link with the external power, unplugging all cables and turning off the power.



Don't place the machine to the place easily vibrated, tilt and other unstable base or in such situations to avoid prolonged use of this product.



Please separated the machine with other items when the machine carried with the power adapter, books etc.



Please shut ting off and removing the power adapter and internal battery before cleaning the machine. Don't use any chemical to clean liquid crystal display, please use special wipes to clean the LCD screen of your display.



Attention (Battery)



Do not dismantle or modify the battery to avoid battery leakage, overheating, fire or burst.



Don't short-circuit the battery.

Don't connect the metal conductors with the poles of the battery dock, or it might lead to the battery short circuited and the personal injured (e.g. burns).

Don't place the battery in extreme temperature environments.
Don't place the battery around heating equipment, such as microwave, oven or inside the radiator or upper. Batteries overheating may explode.



Saving the battery, the temperature should be maintained at $-20^{\circ}\text{C} \sim 60^{\circ}\text{C}$; when the battery is charging, setting the ambient temperature maintained at $0^{\circ}\text{C} \sim 35^{\circ}\text{C}$; Please use the machine in the ambient temperature of $0^{\circ}\text{C} \sim 35^{\circ}\text{C}$ when with the battery power. (The above temperature is recommended for your reference)



Don't place the battery in a fire, which may cause the battery fired and exploded.



Don't let the batteries have a strong impact, such as acupuncture, fall, hit, stepped on and so on.



Don't use wet cloth to wipe the metal parts of the battery.



Don't use metal objects touch the metal parts of the battery.



If the battery fluid leakage, it can not be used any more. Removing the battery from the product, and then ask the service center for help. Taking care not to make eye or skin touch leakage of liquid; If the battery liquid touches the skin or inside the eyes, immediately rinse with water, and go to the hospital for medical treatment.



Battery can't be treated as ordinary municipal refuse. Waste batteries, please comply with local laws and regulations when dealing with waste batteries and supporting recovery.



When installing batteries, make sure insert in the right direction. If you can not successfully insert, do not force installation.



Attention (Adapter)



Don't disassemble the power adapter without permission.



When using the adapter, make sure the power line, power socket and adapter in good condition.



When using the power extension board, make sure not to exceed the voltage and current capacity limitations..



If the power line is damaged, do not continue to use, in order to avoid electric shock or fire.



Do not touch power outlet, power adapter with wet hands.



Disconnecting the power line and outlet connection, Unplug the power.



Don't use the machine when the supply voltage beyond the definition voltage range.



Instruction

Power outlet and power lines may be different due to the country (region) electrical specification requirements varies, please use the local standard power cord.



Attention (Hard disk)

Hard drive is very fragile. The following situation may lead the hard disk damage or data loss:

- External shocks.
- Virus infection.
- When hard disk is running, the forced shutdown, power off, or power failure and restart.
- When hard disk is running, moving the product or hitting the product.

If the data lost due to the file system damaged, please restore the operating system, reinstall the operating system to make the machine run in normal operation. If the hard disk firmware is damaged, please contact the service center.

The company is not liable if the data lost and the hard disk damaged due to the user' negligence of the guide.

1 Turn on and turn off the computer

1.1 Turn on the computer



Attention

- To protect the LCD display, please use both hands to hold on to both sides of the border, or one-hand to hold on to the middle of the screen frame when open / close the display.
 - LCD display is very fragile, be careful and avoid the computer falling or crash.
 - Don't place anything on the backside of the display to avoid collision and extrusion to the LCD.
-

Step 1 Put the computer on a safe flat place.

Step 2 Connect the external equipment like the mouse with computer.

Step 3 Connect the adapter with the computer.

Step 4 Connect the adapter with the AC power slot.

Step 5 Open the LCD in a range of 90°.

Step 6 Press the button  till the led light on..

---Finish

1.2 Turn off the computer



Attention

When the hard disk is still working, please don't remove the power, otherwise the data may lose, even damage the hard disk.

Turn off the computer, there are two ways as follow:

- When the computer is at the situation on, press the key "power" for 4 seconds.
- When the computer is at the situation on, use the OS shut off function. The OS will prepare to shut off the computer to avoid the data lost or applications damaged.

1.3 Restart the computer



Attention

To protect the hard disk, please turn on the computer after the computer shut off 5 seconds.

After you install some programs, the system may pop up a dialog box and asks you to restart the laptop. If you want to manually restart, select "Restart".

1.4 Forced shutdown the computer

If the operating system can not shutdown or restart, you can press and hold the power button for more than 4 seconds to turn off laptop.



Attention

When the hard disk is still working, please don't forced shutdown the computer, otherwise the data may lose, even damage the hard disk.

1.5 Using of Display Screen

The computer can also connect an external display. Please refer to the following method in liquid crystal display and switch between external monitor, or adjust brightness of LCD display.

Key combination	Function
<Fn + F5>	Dim LCD screen brightness
<Fn + F6>	Bright LCD screen brightness
<Fn + F7>	LCD screen backlight light switch

2 Product view



Attention

Don't plug or unplug any parts of the computer when it is running.

2.1 Front view



Parts and keys

1 Cam

When the computer is on, press the camera control buttons (next to the power switch on the left, labeled as "9") on / off camera.

2 LCD panel

3 Keyboard

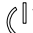
4  mic

5 Indicator light


6 Touch pad and left key, right key

7 Power button

Indicator light (From left to right)


1  Power indicator light

2  Battery charging indicator light

3  Hard disk write and read indicator light

4  English capital indicator light

5  Digital lock indicator light

6  Touch pad scroll lock indicator light

Instruction

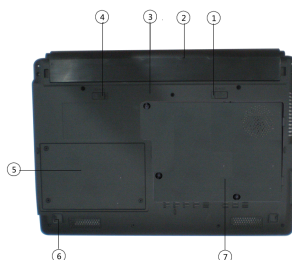
The keyboard may be different from different countries or regions.

2.2 Bottom view



Warning

- Don't use laptops on soft surfaces such as bed or sofa; otherwise it can not be normal laptop cooling.
- Don't use laptops on the legs or other parts of the body, in case of burning you at high temperatures.
- When the computer is switched on, do not remove the battery package, otherwise the data may lose.
- Please use the original battery and power adapter, or approved by the manufacturer or retailer, otherwise the computer may cause damage.



1 Battery lock--manual

2 Battery suit case

3 Notebook back cover

4 Battery lock---spring

5 Hard disk slot

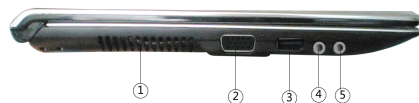
6 Feet button

7 CPU and RAM slot

Instruction

Due to different models, the bottom view may be different with the above view. The size of the battery pack will vary randomly oriented.

2.3 Left side view



1 Ventilation port

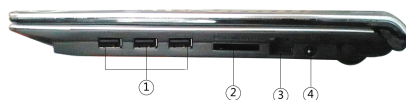
2 VGA

3 HDMI

4 MIC

5 Headphone

2.4 Right side view



1 USB

2 Multi-function card reader

3 RJ45

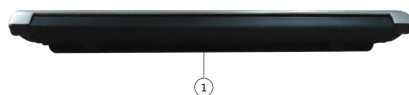
4 DC-in

2.5 Back side view



Attention

- Built-in modem digital telephone systems do not support the voltage. Do not connect the modem port with the digital telephone system to connect, or it may damage the computer.
- Security cable lock can only be as a precautionary measure.



1 Battery

3.1 Power adapter

Power adapter converts AC power into DC power required for notebook computers. The notebook is enclosed a set of universal AC to DC adapter. You can connect the power cord to any 100V-120V or 220V-240V outlet. Different countries may require different standard interface for connecting the supplied AC power cord.

If your power adapter has been connected to the AC power cord, plug the AC power cord into the outlet (preferably with surge protection), and connect the DC with the laptop power port. First connect the power adapter to an AC power outlet, you can first check the plug and the power adapter itself compatibility.



Warning

Power adapter may become hot during using. Please be careful not to put anything on the power adapter, do not let the power adapter close to your body.

3.2 Battery

This product is equipped with a high-capacity rechargeable battery. After the battery fully charged, the duration is based on power management options, user habits, CPU type, battery capacity and LCD display type. To save the battery power, we recommend that you connect the power adapter preferred using the computer, and use the power options under reasonable settings.

3.2.1 Battery charging



Attention

- If the battery is used for the first time, it is recommended that you fully charge and discharge.
 - Do not remove the battery and store separately for more than 3 months, at least every 3 months should charge and discharge the battery once (including spare battery).
-
- The battery life and the times for charging and discharging are limited (the times for repeated charge and discharge are about 300 times). When you find that the battery is fully charged, but duration dramatically reduced. The battery life passes out; please replace a new set of batteries.
 - If the temperature is too high or the battery voltage is too high, the battery will stop charging. BIOS provide intelligent battery charging function. If the battery approval process fails, stop charging and contact an authorized service center.
-
- When the battery is used for the first time, please check whether the battery is fully charged or not.
 - When you use the power adapter to supply the power, the battery is automatically recharged. Don't remove the battery, this battery is with charge control and protection circuit design, when the battery is full, it will automatically stop charging.
 - When the battery is in the charging process, the charging indicator light is blue; when the battery is fully charged, the charging light goes out.
-

3.2.2 Checking the battery charge

In the Window Vista environment, battery system is using "smart battery" standard, which can accurately report the battery charge remaining in battery power. A fully charged battery pack can provide laptop power work about two hours. But the actual working hours will be based on how you use power-saving features, your general habits, the central processor, memory size, and vary the size of the display. To check the remaining battery power, move the cursor to the power icon in the taskbar and can find the remaining charge. It will display the "cell" of the Power icon when using AC power, and display a "plug" on the power icon when using the AC power. To obtain more information and settings, you can right-click the icon and select "Power Options" button, or select "Start> Control Panel> Hardware and Sound (optional)> Power Options."



Attention

- When the battery power is low, there will come out a warning message. If you continue to ignore the low battery warning, laptop computers will eventually enter the suspend mode (Windows default STR "Suspend-to-RAM" mode).
-

When the battery is exhausted, STR (memory, wake-up) mode will not last long. Suspend-to-Disk (STD) mode is not equivalent to the shutdown. STD model

requires a small amount of power supply, and when the battery is completely empty, the model is suspended.

3.2.3 Low battery warning

In the "Power Options" window, click "choose to turn off the display of the time" (You can also click the "Change the computer's sleep time" or "adjust the display brightness"), enter the "Edit Plan Settings" window, then click "Change advanced power settings "in the" battery "options can be low-battery alarm and set related operations.

When the battery is less than 8%, the system will default to send a text message tips. When the battery is less than 4%, a text message tips will be sent, at the same time the computer automatically enters standby mode.

3.2.4 Battery storage

The best storage environment for the battery 10 °C ~ 35 °C dry environment. Above or below this temperature range will reduce battery life. If the battery life will do, replace a new battery.

In the storage process, the battery will automatically discharge capacity slowly decreased.



Attention

The battery contains some hazardous materials, do not arbitrarily discard. Please recycle the damaged or no longer used batteries according to proper recycling of waste management.

3.3 Power management

Sleep and Hibernate are power management mode. In the sleep and hibernation, the system is suspended to reduce power consumption, press the power button to restore your computer to a previous working state.



Instruction

If the system can not resume from standby to run, press and hold the power key for about 4 seconds to force shutdown. Then, restart the system.

3.3.1 Sleep mode

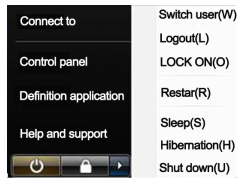
Select" Star > Shut down (U) > Sleep", the notebook goes to sleep.



Instruction

When selecting "Start Menu", the operation is different from different displayed. if you select the traditional "Start" menu, then follows the above operations; if you choose the system "Start" menu, then click "Start", click The small arrow

indicates the direction of march to the right icon, and then directly select "Sleep" button, as shown below. Select the menu displayed; you can right-click "Start" icon, select "Properties", and then "Start Menu" column to select.



In sleep mode, when the computer is not operating for some time, the system will automatically save the current working memory and peripheral devices to stop power supply, but power is still open.

If the system does not connect the power adapter and in a long period of sleep mode, the computer will consume all the electricity the battery, and the system will automatically shut down. Until the battery is charging or notebook computer to re-connect the power adapter, the system can be restarted.

If you want to set the device to exit "sleep" mode when prompted for a password, follow these steps:

- Step 1 Right-click the Power Meter in the notification area icon, and then click "Power Options." Or select "Start> Control Panel> Hardware and Sound (optional)> Power Options."
- Step 2 Click the "wake-up when a password is required" label.
- Step 3 Click "Change Settings is currently unavailable" if the pop-up "User Account Control" window, click "Continue" button.
- Step 4 In the "wake-up time of password-protected" section select "Require a password (recommended)" and click "Save Changes."

---Finished

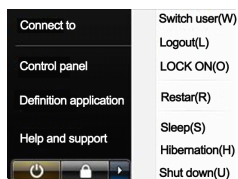
3.3.2 Nap mode

Select" Star > Shut down(U) > Nap", the notebook goes to nap。



Instruction

When selecting "Start Menu", the operation is different from different displayed. if you select the traditional "Start" menu, then follows the above operations; if you choose the system "Start" menu, then click "Start", click The small arrow indicates the direction of march to the right icon, and then directly select "Nap" button, as shown below. Select the menu displayed; you can right-click "Start" icon, select "Properties", and then "Start Menu" column to select.



Nap mode is the data stored in memory to the hard disk and the computer is turned off (power indicator goes out).

In this mode, RAM does not need regular updates; power consumption will be significantly reduced. However, a small amount of computer power needed to maintain certain components, such as LAN will need to maintain power. "Nap" mode saves more power than the "sleep" mode. Click the Start button and click the small arrow icon you can see the Hibernate option. Press the power button again to resume. (Note: In this mode, the power light will turn off).

3.3.3 Saving battery power

When use batteries, please use battery management to save battery power maximally.

- Use the power adapter as far as possible
- adjust LCD brightness

Lighter, LCD screen need more power consumption. To extend battery life, close the computer and turn off the screen if you temporarily do not use notebook.

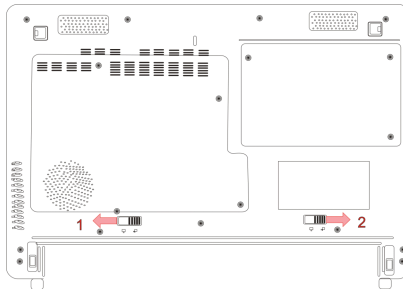
3.3.4 Installation and removal of battery

Installation of battery

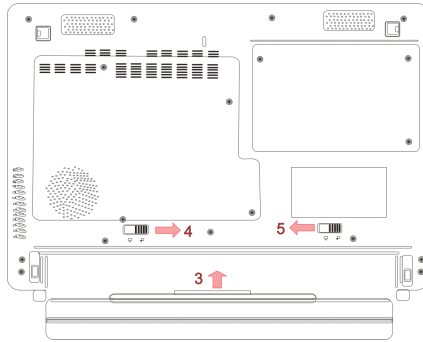
You can power the notebook in two ways: use the power adapter or rechargeable batteries. When you are at home or office, try to connect the power adapter; when you're out, connect the power is not convenient, you can use rechargeable batteries to power the computer.

When you open the product box, the battery is not installed in the computer mainframe, but placed in separate boxes. You can refer to the following operations to install the battery on the system.

Step 1 In accordance with the direction of arrows 1 and 2, Slide the battery lock to "unlock".



Step 2 In accordance with the direction of arrows 3, push the battery pack and make it connect with the hole of the notebook.



Step 3 Press the battery until a "clicking" sound.

Step 4 In accordance with the direction of the arrow 4 and 5, Slide the battery lock to the lock state, locking the battery. ----finished

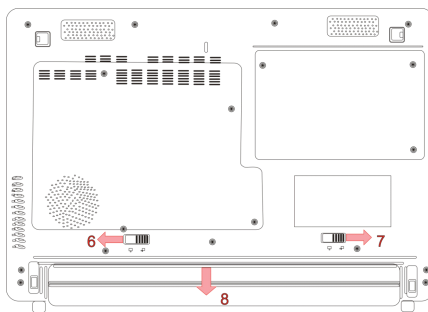
Removal of battery

To replace the use of another set of batteries, please refer to the following operation to remove the battery module.

Step 1 Turn off the notebook, and remove all the connecting lines.

Step 2 In accordance with the direction arrow 6 and 7, pushing the battery lock to state "unlock".

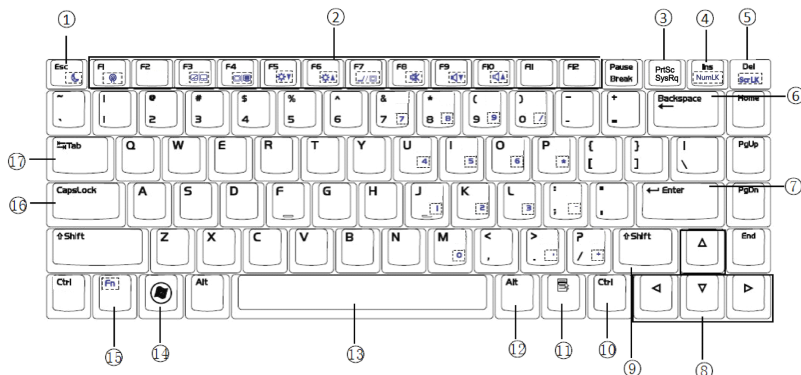
Step 3 In accordance with the direction arrow 8, pulling out of the battery.--finished





4 Keyboard and touchpad

4.1 Using keyboard

Function keys location on the keyboard may vary because of different models, but their function are the same. Please refer to the icons on the keyboard to use these function keys.



1 Esc	Exit the program
2 Fn	Determined by the different software functions
3 NumLK (ScrLK)	Open the numeric keypad
4 Insert (PrtSc)	Insert text (screenshots)
5 Delete(SysRq)	Delete key, while for the boot into the BIOS.
6 Backspace	Backspace
7 Enter	Confirm the operation
8 Arrow keys	To achieve the cursor in the text move, or move the screen image.
9 Shift	In most cases ,combined with other key
10 Ctrl	In most cases ,combined with other key
11 	Bring up the right mouse button menu
12 Alt	In most cases ,combined with other key
13 Space	Enter a space
14 	Pop-up "Start" menu
15 Fn	Determined by the different software functions

16 Caps Lock	Case conversion key letter
17 Tab	Determined by the different software functions

Combination key

<Fn + ESC>	Hibernation mode
<Fn + F1>	Wifi on/ off
<Fn + F3>	Touchpad on/off
<Fn + F4>	External converter HDMI、VGA
<Fn + F5>	Decreasing the brightness of LCD
<Fn + F6>	Increasing the brightness of LCD
<Fn + F7>	Display output device toggle witch
<Fn + F8>	Mute on/off
<Fn + F9>	Decreasing the volume of loudspeaker
<Fn + F10>	Increasing the volume of loudspeaker
Fn+Ins/NumLK	Numeric keypad on / off
Fn+↑:	Stop
Fn+↓:	Play/Suspended
Fn+ ←	Forward
Fn+ →	Next

4.2 Using touchpad

Light pressure with the tip of your finger is all that is required to operate the touchpad. Because the touchpad is electrostatic sensitive, heavy pressure does not make more sensitive.

Use of the touchpad

- Clicking / tapping

With the cursor over an item, press the left button or use your fingertip to touch the Touchpad lightly, keeping your finger on the touchpad until the item is selected.

- Double- Clicking /Touch-tapping

This is a common skill for launching a program directly from the corresponding icon you select. Move the cursor over the icon you wish to execute, press the left button or tap the Touchpad twice in rapid succession, and the system launches the corresponding program. If the interval between the clicks or taps is too long, the operation will not be executed. You can set the double-click speed using the Windows Control Panel" Mouse."

- Dragging

Dragging means to pick up an item and place it anywhere on the screen you wish. You can move the cursor over the item you select, and while keeping the left button depressed, moving the cursor to the desired location, then release the button. Or, you can simply double-tap on the item and hold while dragging the item with your fingertip.

Maintenance of touchpad

The touch pad is pressure sensitive panel. It is very easy to damage by improper maintenance. Please note the following precautions.

- Avoid contamination of dust, grease and liquids.
- Keep your fingers clean and dry when using.
- Do not place heavy objects on the touchpad and the top of the two buttons.
- Do not write on the touch pad with sharp objects so as to avoid damaging the surface.

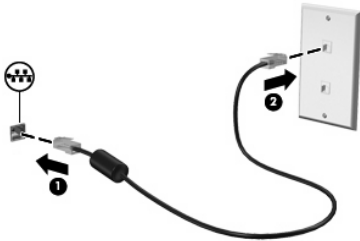
5 Network connections

5.1 Use of Lan

Use the RJ-45 network cable to connect the internet (sold separately).

According the following steps:

Step 1 Connect the network cable with the computer.

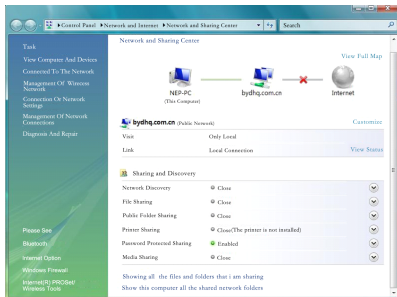


Instruction

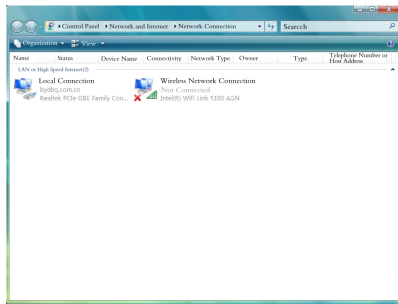
When the network cable is with a receiver(1) to prevent interference noise suppression circuitry from the TV and radio, please connect the cable end (2) with the notebook.



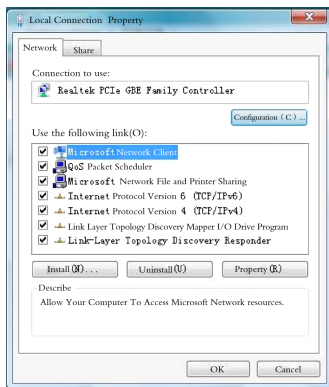
Step 2 Right-click "Network" icon, select "Properties" to open "Network and Sharing Center" window, or select "Control Panel> Network and Internet> Network and Sharing Center."



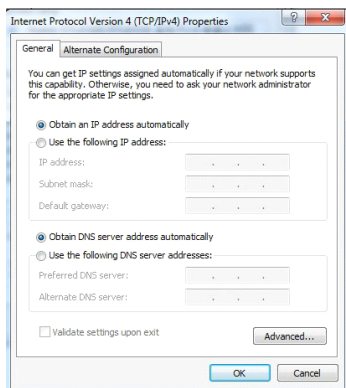
Step 3 Left-click the Task List "Manage network connections" and open "Network Connections" window.



Step 4 Right-click "Local Area Connection" icon and select "Properties", open the "Local Area Connection Properties" window.



Step 5 Left-click to select "Internet Protocol Version 4 (TCP/IPv4)", then click the "Properties", or simply double-click "Internet Protocol Version 4 (TCP/IPv4)", open the "Internet Protocol Version 4 (TCP / IPv4) Properties" window.



Step 6 Enter their IP and DNS server address.

If you use a DHCP connection, select the "Automatically obtain IP address" and "DNS server address automatically."


Instruction



About the IP and DNS server addresses and other information, contact your network operator.

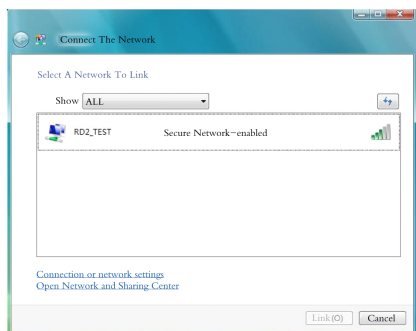
----Finished


5.2 Use of wireless

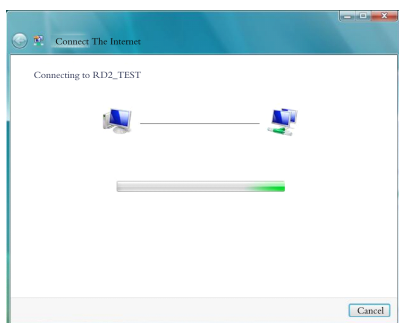
5.2.1 Wireless connection

The notebook is equipped with a built-WiFi wireless card, press the radio control buttons (the power switch on the left) to enable / disable wireless networking. When the wireless indicating light (💡) is in blue color, the wireless is on. And the network connection icon  will appear on the taskbar.

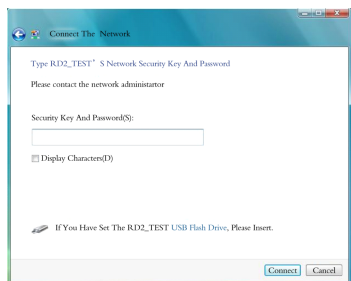
Right-click , choose "Connected to the network"; or left-click , Select "Connect to network", open the "Network Connection" window.



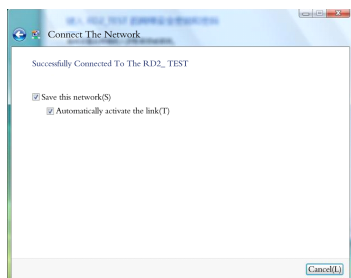
In the "Connect Network" window, click  refresh the list of wireless networks, the system will automatically search and display available networks. In the list, select your desired network name, the system will automatically display related network information.



Some network may need the password confirmation, please follow the system info.



Network connection is successful, click "Close", the user can use the wireless network.



5.2.2 Knowing the network status

Icon	Network status
	Wireless network connection is connected, indicating that one or more of the WLAN devices are connected to the network.
	Wireless Internet connection is down, indicating that one or more WLAN equipment has been disconnected from the network.
	Network status is connected, indicating that one or more LAN drivers are installed, and one or more LAN devices are connected to the network.
	Network status is disconnected, indicating that one or more LAN drivers are installed but no LAN device is connected to the network.


5.2.3 Bluetooth connection


The notebook is with Bluetooth card and no need the cable to connect Bluetooth devices. Notebook computers, desktop computers, mobile phones and PDA etc may be with Bluetooth function.

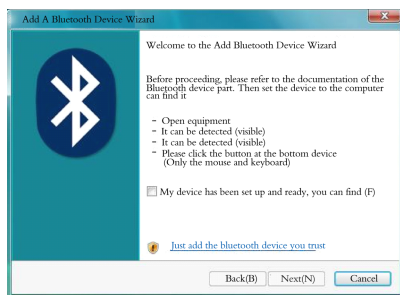
Instruction

If your laptop doesn't have the built-in Bluetooth card, you need to connect USB or Express Card with Bluetooth module to use the Bluetooth function

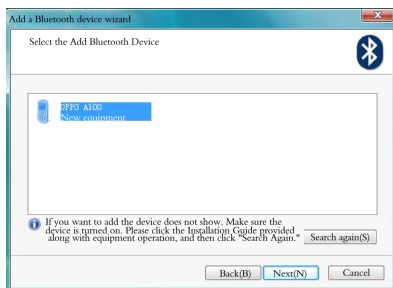
Using of the Bluetooth function, follow the steps:

Step 1 Pressing "Fn + F2" to open the Bluetooth function, the Bluetooth icon  will appear bottom right corner.

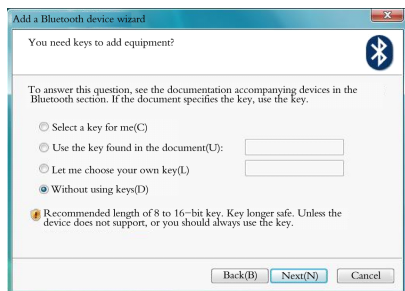
Step 2 Left-click or right-click , choose "add Bluetooth (A)", open "add Bluetooth device" window.



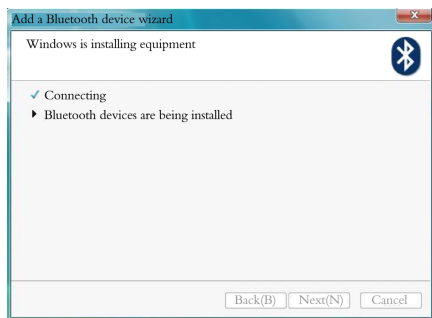
Step 3 Select "My settings have been set up and ready, you can find (F)", click "Next", the system automatically search and find out the Bluetooth device turned on.



Step 4 Select your desired Bluetooth device connected, click "Next" to open the key settings window, users can choose its own needs to use the private key or not.



Step 5 Select "Do not use the key", click "Next", the system automatically add a Bluetooth device.



Step 6 Completed, click"finished".



Instruction

After the Bluetooth device is completely added, the user can choose "Control Panel> Network and Internet> Bluetooth Device" to find the added property of Bluetooth devices, and users can continue to add other Bluetooth devices, just click "Add", the following Operating steps are same as described above.

6 Storage devices

With storage devices the notebook can read and write documents, and store photos and other files. The notebook computer includes the following storage devices:

- Flash memory card reader
- Hard disk

6.1 Multi-function card reader

Generally, you have to separately purchased memory card reader for digital cameras, MP3 players, cell phones, PDA and other devices's memory card. The notebook computer has a single built-in card reader, can read the following flash memory cards: SD Card, Multimedia Card (MMC) cards, Memory Stick (MS) and Memory Stick ProDuo memory rod (with MSPro adapter) and XD card. Memory Stick must be a standard Memory Stick or with MagicGate technology. This built-in card reader is not only convenient, but also the access speed is more quickly than most other forms of reader's, because it uses the laptop's internal high-bandwidth USB bus.



Attention

Don't take out the card when read, copy, format, or delete data on the memory card or after the completion of these actions immediately remove the memory card, which may cause data loss.



Warning

Before the removal of flash memory cards please use the "Safely Remove USB Mass Storage Device" function in the task bar to prevent data loss.

6.2 Hard drives disk

Hard drives disk has a higher capacity and its operating speed is much faster than the floppy drive and optical drive. The notebook is equipped with a removable hard drives disk (about wide 63.5mmX high 9.5mm). The current drives support SMART (Self-Testing and Reporting Technology), an error or failure can be automatically detected before use. Any questions about hard drive disk replacement or upgrade, please contact an authorized service center or retailer.

7 Daily maintenance

This product is the precision equipment; please pay special attention to the following maintenance priorities:

7.1 Lcd panel

- Don't forcibly closed the Lcd panel cover.
- Don't put anything between the keyboard and the panel when closing the cover.
- Don't touch the panel with your finger or sharp objects.
- Recommend special cleaning cloth to clean the LCD panel, while cleaning do not forcibly wipe the panel.
- Don't use any chemical detergent liquid crystal to clean the panel.

7.2 Water leak into the notebook

When the water leak into the notebook, don't turn on the notebook, or it may cause more damage to the notebook. Please follow the following steps and then ask the after-sales center for help.

- Step 1 Don't use the power key to turn off the notebook. Please remove the power cord and the battery (remove the external or removable parts of modules if any).
- Step 2 Pour out the water inside the notebook, and find damp paper towel or soft cloth to clean the notebook and avoid the worn surface.
- Step 3 Use a fan to dry the body and parts. Then, immediately send the notebook to the after service center.

---Finished



Attention

- Don't used the "hair dryer" in order to avoid structural deformation caused by high temperature.
 - If the notebook backpack has been soaked in water damage, do not use it to load the notebook which need to send to repair in order to avoid secondary damage.
-

7.3 Cleaning

Before cleaning and maintenance, be sure to follow these steps to maintain your computer and related peripherals.

- Step 1 Turn off the power and remove the external power supply, remove internal battery and all external devices connected line.
- Step 2 To suck the dust in the connector, keyboard and other parts by a small vacuum cleaner.
- Step 3 Gently wipe the cabinet surfaces with slightly damp cloth, please note that any cleaning liquid leaked into the notebook may cause a short circuit burned.
- Step 4 Please turn on the notebook after the notebook fully dried.

---Finished

7.4 Outdoor using

When you use the notebook outdoor, please follow the steps:

- Make sure all backup batteries are fully charged.
- Turn off your notebook.
- Disconnect the power adapter, the computer and power outlet
- Put the notebook and spare battery, power adapter, power cord and other accessories into the special backpacks.
- Don't forget your power-on password and hard drives disk password.
- Make sure that the voltage specifications in the target national or regional. The power adapter supplied with the notebook is internationally, but due to the different countries voltage, different design, the power plug may not match the power cord. You can buy power line in the local shop, or contact local hotels .



Attention

- If you drive a notebook when they go out, don't put the notebook on the sun drying surface in the car. Please put it in shady corner in the trunk. In summer travel, with particular attention not to place the laptop in a car.
 - Don't move the notebook when the hard drive disk is still running. Notebook must be shut down, standby or hibernate state before being moved.
 - The network connection is broken after the system is in hibernation.
-

7.5 Data backup

Your personal information may be lost or damaged for the following reasons. For example: accidentally deleted or overwritten files, hard drive corruption, computer viruses, sabotage, natural disasters, such as computer theft can lead to data loss. Recommend you manage the data and backup to avoid losses due to accidents.

Hard disk data problems can be divided into two situations: the first one is the hard drive disk's own fault; the second is that the notebook can not boot due to the damage caused by the operating system. You need to save data to another memory card to avoid data lost.

In order to improve the performance of the notebook, you can press C, D and other operating systems in different partitions to store files and other data, but we recommend you not store the important data in the C zone. You may also be chosen to use the hard disk partitioning software.

8 OS and driver application setup

The notebook comes with a CD-ROM provides BIOS, drivers and applications to enable hardware features, extend functionality, help you manage increasing some function that the other OS is not included.

If you need to upgrade or replace your CD-ROM, contact your dealer to download software drivers and applications. CD-ROM contains all the drivers, applications, and for general operating system software. But the CD does not include the operating system. Even if your notebook has made a pre-set, CD-ROM is also very necessary, it can provide some software the factory doesn't pre-installed.

Recovery CD-ROM includes the optional factory-installed operating system image file, and provides a comprehensive recovery program that allows notebook's operating system quickly restored to its original working state, so that your hard drives disk can maintain a good working condition. To purchase, please contact your dealer.

8.1 OS setup

The notebook supports Windows 98/ME/2000/XP/64 bit XP/2003/Vista/7 operating system. Please try to use the latest version of the operating system and timely upgrades to the hardware with the best efficiency.

There are many versions of the operating system; the manual only presents a brief introduction of the installation process. You can follow the operating system installation documentation or contact the manufacturer's technical support staff to obtain more detailed information.

Preparing for Installation

Following the steps:

- One USB 2.0 DVD drive (external drive)
- The CD for OS setup
- The CD for driver application setup

Change the system boot options

Follow the steps:

- Step 1 Boot, press enter **Setup Utility** to set interface.
- Step 2 Press left and right arrow keys to select "Boot" .
- Step 3 Press up and down arrow keys to select "Legacy", by <Enter>.
- Step 4 Press up and down arrow keys to select "Boot Type Order", by <Enter>.
- Step 5 Press up and down arrow keys to select Startup Items.
- Step 6 Press <F10> save the settings. In the dialog box, select "Yes", then press <Enter>

Step 7 Temporary change startup items, you can boot, press <ESC> into the boot menu.

---Finished

Setup process

Step 1 Connect the DVD drive to the computer USB Interface.

Step 2 Boot and put the installation CD into the external drive.

Step 3 Enter the boot menu by <F11>, the system will default the appropriate USB drive option.

Step 4 Enter into the operating system installation interface.

Step 5 Follow the screen prompts to complete the operating system installation.

---Finished



Attention

- Recommend that you try to use the "one-click restore" feature to restore the system.
 - When installing the operating system, please connect the power adapter, so that the installation process won't be interrupted due to the battery runs out and cause permanent damage to the file system.
 - When installing the operating system, formatted files on the system may result in "a key to restore" function failure.
-

8.2 Driver application setup

Step 1 Put the driver CD into the external drive.

Step 2 The system can automatically detect the hard equipment and display the available drivers.

Step 3 Install the driver to setup the corresponding hardware device.

---Finished

8.3 BIOS Management

8.3.1 Enter into BIOS

After the computer starts, enter into the BIOS settings by interface immediately. After the notebook power on, press <ESC> key, you can see the startup options; Press <ESC> you can choose the mode you want to start. .

8.3.2 BIOS security

Step 1 Power on the notebook, click key to enter the BIOS.

- Step 2 Select "Security> User Password", fill the password you want in the dialog box that pops up to set the password (entered twice).
- Step 3 Select "Save & Exit", save and exit.

---Finished



Attention

If follow the below table can not solve the problem, please contact your local service center for repairing.

Problem	Diagnosis and solve
Can't hot star after crash	Press the power button for 4 seconds to force shutdown. After a few minutes, restart the notebook.
Can't boot	<ol style="list-style-type: none"> 1、 Connect an external power supply if not. 2、 Make sure the power indicator can light and the power adapter can work. 3、 Remove the USB, SD card and other external devices.
Water lead into the notebook	Please refer to the "water lead into the notebook" in chapter "Daily Maintenance".
In the mode of Standby or Hibernation, can not restore the system	<ol style="list-style-type: none"> 1, Press the power button to resume normal operation. 2, If it is not the above reasons, please remove the upgrade installation after purchase part (memory, hard drives, WLAN, Bluetooth). 3, Please restore the operating system back to an earlier one.
Can't restore the OS	<p>Follow the steps:</p> <ol style="list-style-type: none"> 1, Remove external devices and their driver application. 2, Refresh BIOS. 3, Update the appropriate application. 4, Remove the inappropriate application. 5, Reinstall the OS. 6, Send the notebook to the factory for repair.
Black screen	<ol style="list-style-type: none"> 1, Test battery, if the power is not enough, use the AC adapter. 2, Test the electrical outlet by using other equipment (eg TV) to test the electrical outlet, make sure the power outlet is working. 3, Switch the video image, if the notebook is connected to an external monitor, press<Fn> + <F3> The video image to switch to external monitor.

Problem	Diagnosis and solve
Display a blue screen, highlight the text	<ol style="list-style-type: none"> 1, Remove the expansion memory. If you have installed extended memory after you purchased the notebook, turn off the power and remove the extended memory, and check the notebook whether it is normal or not. If the notebook is normal, the extended memory is not compatible. 2, Remove the software applications. You may have recently installed software is not compatible with the system; try to remove them in the Windows Safe mode. 3, Check the system whether virus infected. 4, In the Windows system or in DOS mode use the WINFLASH AFLASH upgrade the BIOS to the latest version. You can download the application and the BIOS file from the Internet.
Network problem	<ol style="list-style-type: none"> 1, Check the network cable connector, make sure the network cable is plugged into the right side of the LAN / Ethernet interface and good contact. 2, Check the WiFi indicator, ensure that wireless opened. 3, Check the network settings to ensure proper network connectivity.
Other software problem	Please check the software documentation or contact the software manufacturer to obtain troubleshooting information.
The fan is working, but the CPU temperature is hot	<ol style="list-style-type: none"> 1, Make sure when the CPU temperature is high, the fan is working, and ensure that the main outlet is with air flow. 2, If there are many programs running at the same time (see the task bar), close them to reduce the system load. 3, This problem may also be caused by a virus, use anti-virus software to detect.
The build-in webcam can't work	<ol style="list-style-type: none"> 1, Check the "Device Manager" to check any problem there. 2, Try to install the camera driver. 3, If the above steps can not resolve the problem, please upgrade to the latest BIOS version and try again .

10 Technical specification



Attention

Technology and specifications are subject to change without notice.

Specs	
CPU	Intel® Atom™ Processor D525 1.8GHz
Advanced Caching	1M Cache
DDR capacity(#)	2GB /4GB
DDR type	DDR2 800MHz/ DDR3 1066 MHz
Chipset	Mobile Express Chipset Intel ® NM10
Storage Performance	
HDD capacity(#)	250G
Panel	
Size	13.3 Inch
Type	TFT Lcd display
Resolution	1366x768 (WXGA)
Video/Audio	
Graphic	512MB
Audio	Stereo
Type	Realtek ALC662
Input device	
Mouse Control	Touch pad
Keyboard	86keys
Build-in webcam	
Pixels	1.3M

Environmental requirements	
Using temperature condition	5℃～35℃
Using humidity condition	35%～85%
Storage temperature	-20℃～55℃
Storage humidity	20%～93%
Adaptor and battery	
Adapter	AC 100V～240V; DC 19V
Output power	65W Max.
Battery	4/8cell
Battery voltage	19V
I/O	
W-LAN	10/100M, 802.11 N, 3G
Audio	Build-in speaker; mic; Support external headphone / speaker and microphone
USB	USB 2.0*3
Card-reader	Support SD/MMC/MS/XD
VGA	D-15 Output
HDMI	support
Basic	
Net weight	about 1.3 Kg (without battery) about 1.45 Kg (with 4cells battery) about 1.6 Kg (with 8cells battery)
Size	322 x 232 x 148~246mm



Instruction

With (#) options are optional. Design and specifications are subject to change without notice.

11 Terms and Abbreviations

BIOS	Basic Input/Output System
DHCP	Dynamic Host Configuration Protocol
DNS	Domain Name Service
IP	Internet Protocol
LAN	Local Area Network
MMC	Multimedia card
MS	Memory Stick
SD	Secure Digital Card
TCP	Transfer Control Protocol
TFT	Thin Film Transistor
USB	Universal Serial Bus
UIM	User Identity Module
VGA	Video Graphics Array
WiFi	Wireless Fidelity

12 Hazardous substances in electronic products declaration

Name	Name of toxic and hazardous substances or elements					
	Pb	Cd	Hg	Cr(VI)	PBB	PBDE
Structure-plastic	O	O	O	O	O	O
Structure-Hardware	X	O	O	O	O	O
Gasket	O	O	O	O	O	O
Cable	O	O	O	O	O	O
Brochures and stickers	O	O	O	O	O	O
Speaker	O	O	O	O	O	O
Touchpad	X	O	O	O	O	O
Mini keyboard	O	O	O	O	O	O
Lcd panel	X	O	O	O	O	O
PCB	X	O	O	O	O	O
CPU	X	O	O	O	O	O
Battery	X	O	O	O	O	O
Adapter	X	O	O	O	O	O
Camera module	X	O	O	O	O	O
HDD	X	O	O	O	O	O
DDR	X	O	O	O	O	O
Wireless card	O	O	O	O	O	O
Thermal Module	X	O	O	O	O	O

O: Indicating that the hazardous substance in all homogeneous materials for this part of the content SJ/T 11363-2006 are within the requirement of "Electronic Information Products limited requirements for hazardous substances,"

X: Indicating that at least one of the homogeneous materials for this part of the content is beyond the SJ / T 11363-2006 limit requirement, but it does not mean that harmful is harmful to human body.

Environmental Protection Period Description:



The environmentally friendly using period for the notebook is 10 years; mark is as shown on the left. Some parts which can be replaced will have a different use period (eg: battery cell module) attached. The environmental protection using period only applies to work under the conditions laid in the product manual.



N0018 P13

FCC STATEMENT

1. This device complies with Part 15 of the FCC Rules. Operation is subject to the following two conditions:

(1) This device may not cause harmful interference.

(2) This device must accept any interference received, including interference that may cause undesired operation.

2. Changes or modifications not expressly approved by the party responsible for compliance could void the user's authority to operate the equipment.

NOTE: This equipment has been tested and found to comply with the limits for a Class B digital device, pursuant to Part 15 of the FCC Rules. These limits are designed to provide reasonable protection against harmful interference in a residential installation.

This equipment generates uses and can radiate radio frequency energy and, if not installed and used in accordance with the instructions, may cause harmful interference to radio communications. However, there is no guarantee that interference will not occur in a particular installation. If this equipment does cause harmful interference to radio or television reception, which can be determined by turning the equipment off and on, the user is encouraged to try to correct the interference by one or more of the following measures:

- Reorient or relocate the receiving antenna.

- Increase the separation between the equipment and receiver.

- Connect the equipment into an outlet on a circuit different from that to which the receiver is connected.

- Consult the dealer or an experienced radio/TV technician for help.

RF warning statement:

The device has been evaluated to meet general RF exposure requirement. The device can be used in portable exposure condition without restriction.