

Please read this manual carefully before using your computer

User Manual

CM9702

Ver: 1.0

CONTENTS

CONTENTS.....	1
1. Important Safety Instructions	2
1.1 Selecting a place to work	2
1.2 Using your battery	3
1.3 Connecting to an AC power source	3
1.4 Using your computer	4
2. Getting to Know Your Computer	5
2.1 Getting to know your computer.....	5
2.1.1 Front View	6
2.1.2 Rear View.....	6
2.1.3 Top View.....	7
2.1.4 Left-side View.....	7
2.1.5 Right-side View	7
2.2 Getting to know your accessories	8
2.2.1 Adaptor.....	8
2.2.2 USB expansion device (optional)	8
3. Using Your Computer.....	9
3.1 Charging your battery.....	9
3.2 Storage space	9
3.3 Using your memory card	10
3.3.1 Installation of your memory card	10
3.3.2 Operating your memory card.....	11
3.4 Functions of buttons.....	11
3.4.1 Power button	11
3.4.2 HOME button.....	12
3.4.3 Volume - / Menu button	13
3.4.4 Volume + / Back button	13
3.4.5 Screen Rotation Lock button	14
3.4.6 Reset button	14
3.5 Screen rotation.....	14
3.6 Using your touch panel	15
3.6.1 Click operation.....	15
3.6.2 Long-press operation	16
3.6.3 Slide operation	16
3.6.4 Magnify operation.....	17
3.6.5 Shrink operation	17
3.7 Connecting to the Internet.....	17
4. Installation of Software and Upgrade of Operating System	18
4.1 Installation of software.....	18
4.1.1 Local installation / Installation from expansion cards.....	18
4.1.2 Installation from PC	20
4.1.3 Installation site of software	22
4.2 Upgrad of Operating System.....	23

1. Important Safety Instructions

Thanks for using our products and we are committed to offer you perfectly-created and strictly-tested products. Please read this manual carefully before using your computer.

1.1 Selecting a place to work

WARNING

- a. Do not operate your computer near water to avoid damages of your computer and risk of electric shock.
- b. Operate your computer within a temperature range of 50 to 95 degrees F (10-35 degrees C) and 20 to 80 percent of relative humidity.
- c. Do not expose your computer to the direct sunlight in a closed area such as in a car to avoid deformation or burning of your computer.
- d. Dispose of the packing material such as plastic bags in a safe and proper way.
- e. Keep your computer away from the children.

CAUTION

- a. Keep your computing environment clean and free of dust to avoid potential risk of damages.
- b. Keep your computer away from electromagnetic fields.
- c. Keep your computer away from other electric appliances such as audio devices.

The loudspeaker of the audio device may produce high-intensity magnetic fields which may lead to loss of data or damage of LCD screen.

1.2 Using your battery

WARNING

- a. Use only an adaptor recommended to avoid burning or damages of your battery.
- b. Keep your computer away from fire source to avoid burning or explosion of your battery.
- c. Do not expose your computer to environment with temperature above 140 degrees F (60 degrees C) to avoid burning or explosion of your battery.

1.3 Connecting to an AC power source

WARNING

- a. Do not use loose or damaged power plugs to avoid electric shock and burning of your computer.
- b. Use properly grounded outlet. Connecting your computer to an outlet without proper grounding may result in electric shock and damages to your computer.
- c. Do not touch the power plug with wet hands to avoid electric shock.
- d. Hold the plug body when removing the power cord from an outlet to avoid fire and electric shock.
- e. Use your computer at the proper voltage / current indicated to avoid fire or electric shock or damages of your computer.
- f. Unplug the power cord immediately after you hear some noise from the power cord or outlet, and contact the customer service for help.
- g. Make sure the power plug fits snugly into the electrical outlet. Loose fit may result in fire, etc.

- h. Do not bend or place a heavy object on top of the power cord. Keep the children and pets from damaging the power cord to avoid potential risk of fire and electric shock.
- i. Keep the power cord and plug clean and free of dust to avoid potential risk of fire.
- j. Remove the power cord, battery and any other cables from your computer immediately after an object or liquid enters into your computer or an adaptor, and then contact the customer service for help.
- k. Disconnect the power cord, battery, and any other cables from your computer before cleaning it to avoid electric shock or damages of your computer.

1.4 Using your computer

WARNING

- a. Unplug the power cord and the other cables before moving your computer to avoid your tripping over the loose cables.
- b. Follow the instruction by flight attendant while travelling on an airplane to avoid potential risk of an airline accident.
- c. Use mild detergent or computer cleaning products to clean your computer, and do not use your computer until it gets dried to avoid electric shock.
- d. Disconnect the power cord during a lightning storm to avoid potential risk of fire and electric shock.
- e. Do not place water, chemical reagent or any other liquid onto your computer because any liquid's entering into your computer will lead to fire, electric shock or damages to your computer.

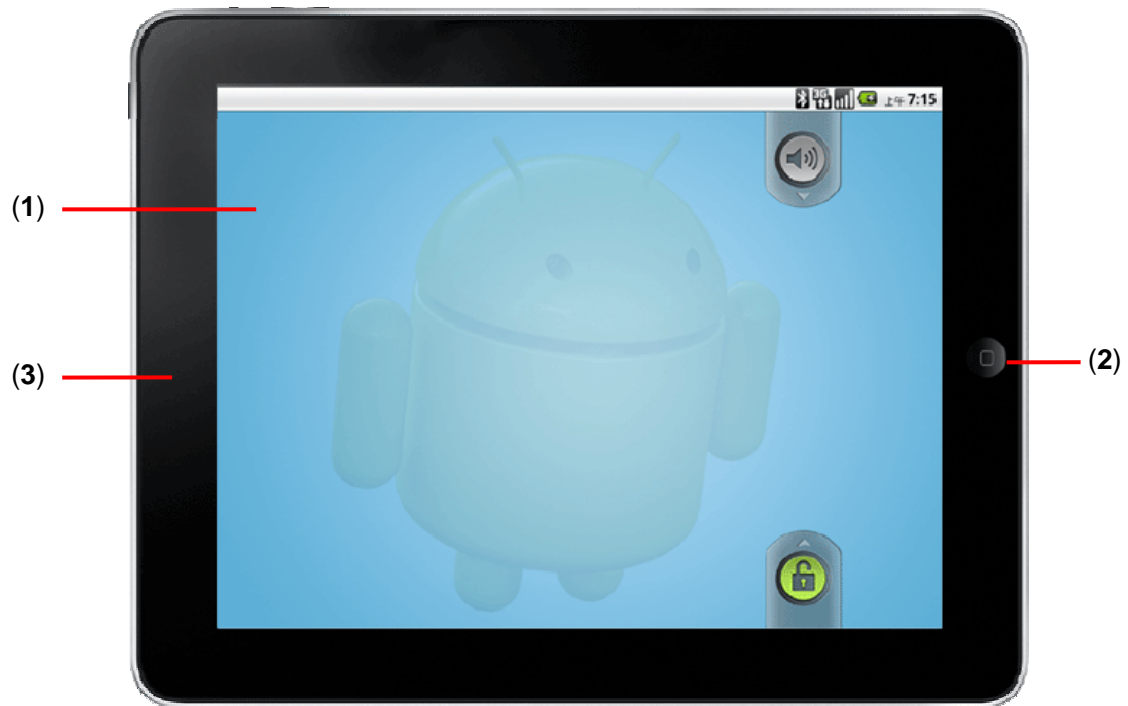
- f. Avoid direct contact with liquid from the broken LCD because the LCD monitor's fluorescent lamp includes hydrargyrum, and wash your eyes several times with clean water if hydrargyrum spills into your eyes or the other parts of your body. If you feel something different, contact a doctor or a health administrator immediately.
- g. Do not touch or scratch the LCD with sharp objects to avoid damages of LCD screen.
- h. Do not exert excessive pressure on the LCD because excessive force can break the touch panel and LCD screen.
- i. Do not disassemble your adaptor, or you may suffer electric shock.

2. Getting to Know Your Computer

2.1 Getting to know your computer

Introduce to you the components and functions of your computer.

2.1.1 Front View



- 1) Touch screen
- 2) HOME button
- 3) Camera

2.1.2 Rear View



- 1) Plastic case
- 6

2) TF card expansion slot (covered by plastic cover)

2.1.3 Top View



1) Power interface (DC in port)

2) Volume - / Menu button

3) Volume + / Back button

4) Screen Rotation Lock button

2.1.4 Left-side View

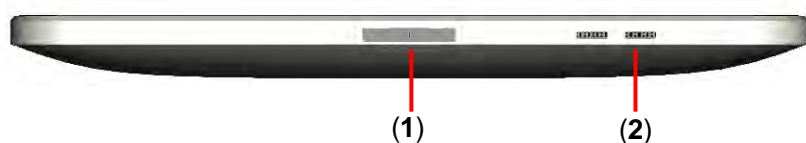


1) Headphone interface (2.5mm)

2) Microphone / Reset button

3) Power on / off button

2.1.5 Right-side View



1) 30 Pin expansion interface

2) Speaker

2.2 Getting to know your accessories

2.2.1 Adaptor

It is used to charge your battery.




2.2.2 USB expansion device (optional)

It supports to use 3 USB 2.0 ports.



3. Using Your Computer

3.1 Charging your battery

There is an internal rechargeable battery in your computer. When this icon  shows on your screen, or a WARNING reminding you to charge your battery pops up, it means your battery capacity is low and you need to charge your battery.



Ways to charge your battery:

- Connect your adaptor to both the power source and your computer.
- A moving signal can be seen if your battery is being charged.



- This icon will show if your battery is fully charged.



Note:

It takes more time to charge your battery while your computer is powered on.

3.2 Storage space

The storage space of your computer is made up of three: Local storage, Memory card storage and external device storage like USB flash disk.

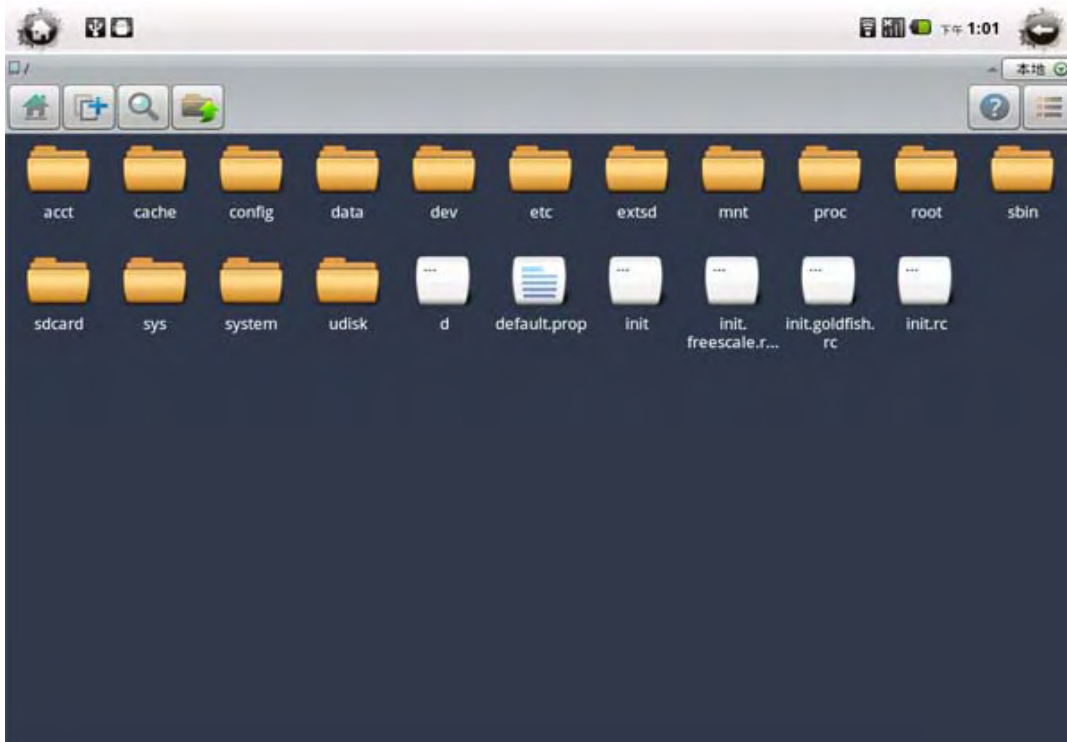
Open “ES File Browser”

“extsd” file corresponds to Local storage.

“sdcard” file corresponds to Memory card storage.

“udisk” file corresponds to external device storage like USB flash disk.

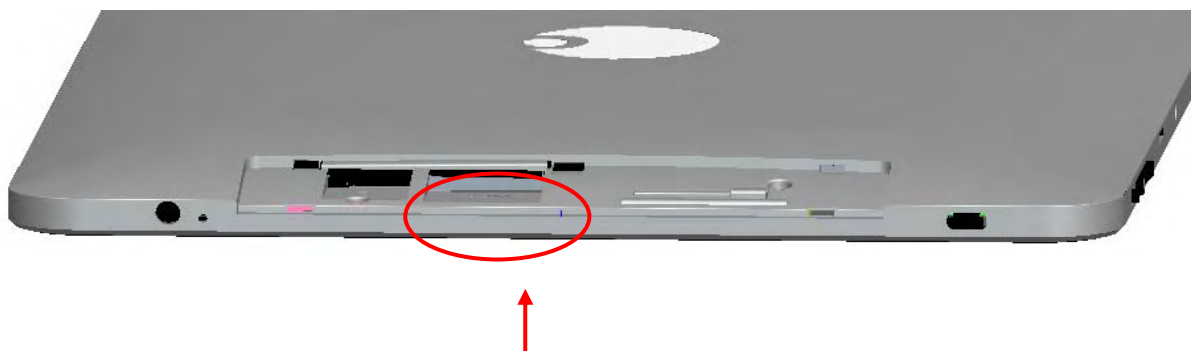
After opening these files, you can browse, copy, cut, paste, and delete, etc. the documents of relevant files.



3.3 Using your memory card

3.3.1 Installation of your memory card

Remove the plastic cover and you can see the TF card slot. Insert your TF card into this slot and click it into place.






(The side with words of TF card should go with the side with screen of your computer.)

Note: The position of the actual card slot may be a little different from that of this picture above.

3.3.2 Operating your memory card

These words  正在准备 SD 卡 will appear on the screen after you insert TF card into place, and you can operate your card after these words disappear.

Open “ES File Browser”, click “sdcard” file, and edit the document you want to.



3.4 Functions of buttons

3.4.1 Power button

While your computer is---

Powered off: Your computer will be turned on if you press it and hold for 3 seconds;

In running mode: Your computer will enter into standby mode if you give it a short press;

A selection menu will pop up for you to choose from Silent Mode, Flight

Mode, Shut Down if you press it and hold for 3 seconds.



In standby mode: Your computer will wake up if you give it a short press.

3.4.2 HOME button

While your computer is---

In running mode: Your computer will go back to Main Interface if you give it a short press;

A list of 8 application programs recently run will pop up for you to choose from if you press it and hold a little longer.



In standby mode: Your computer will wake up if you give it a short press

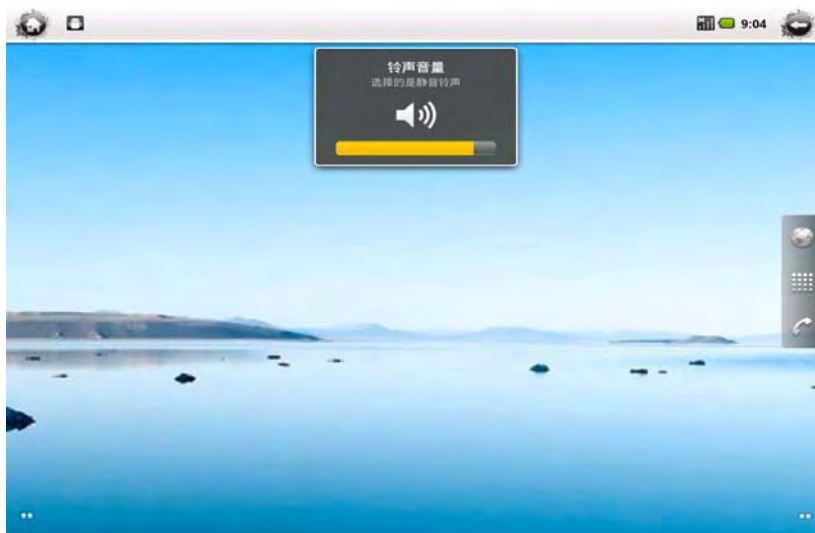
3.4.3 Volume - / Menu button

While your computer is---

In running mode: A setting menu will pop up at the bottom of the screen if you give it a short press;



A volume status pattern will pop up if you press it and hold a little longer, and then you can decrease the volume by pressing it.



3.4.4 Volume + / Back button

While your computer is---

In running mode: Your computer will go back to the previous menu if you give it a short press;

A volume status pattern will pop up if you press it and hold a little longer, and then you can increase the volume by pressing it.

3.4.5 Screen Rotation Lock button

While your computer is---

In running mode: The screen will be locked if you move it to Volume - / Menu button (G-sensor for playing games still works); Screen rotation can be realized if you move it away from Volume - / Menu button;

In standby mode: Your computer will wake up if you move it.

3.4.6 Reset button

If your computer crashes down or none of the buttons works, use a threadlike object such as a brooch to press it to turn down your computer.

Note: Press it repeatedly may cause the loss of data.

3.5 Screen rotation

Your computer supports rotation of 3 directions (X/Y/Z axis) and your computer will rotate with the direction you hold it.



Note: 1. If the screen has been locked by your pressing the Screen Rotation Lock, the screen will stay with the direction you held it.

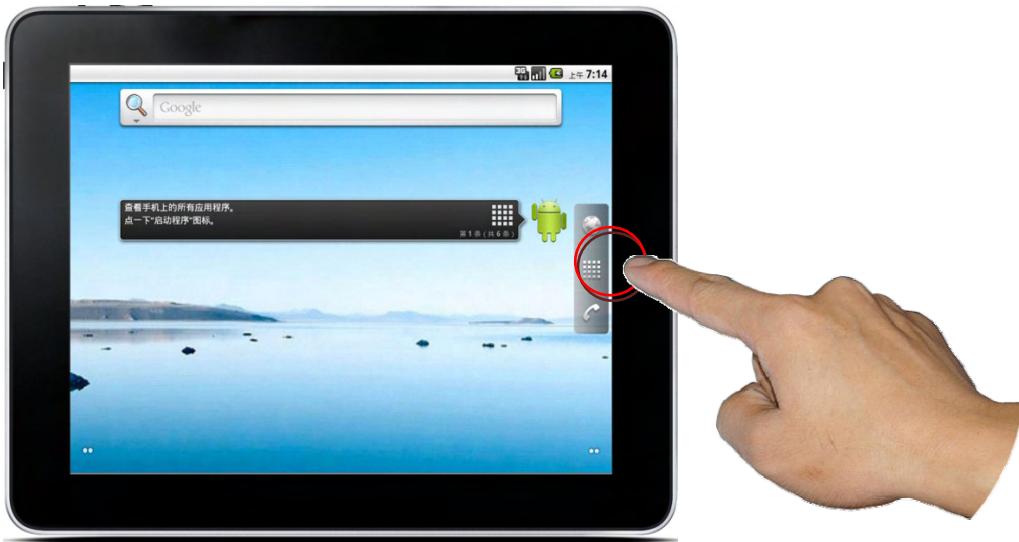
2. Some software may not support screen rotation.

3.6 Using your touch panel

Your computer is equipped with a touch panel, and all the operations can be done by your fingers' touching it.

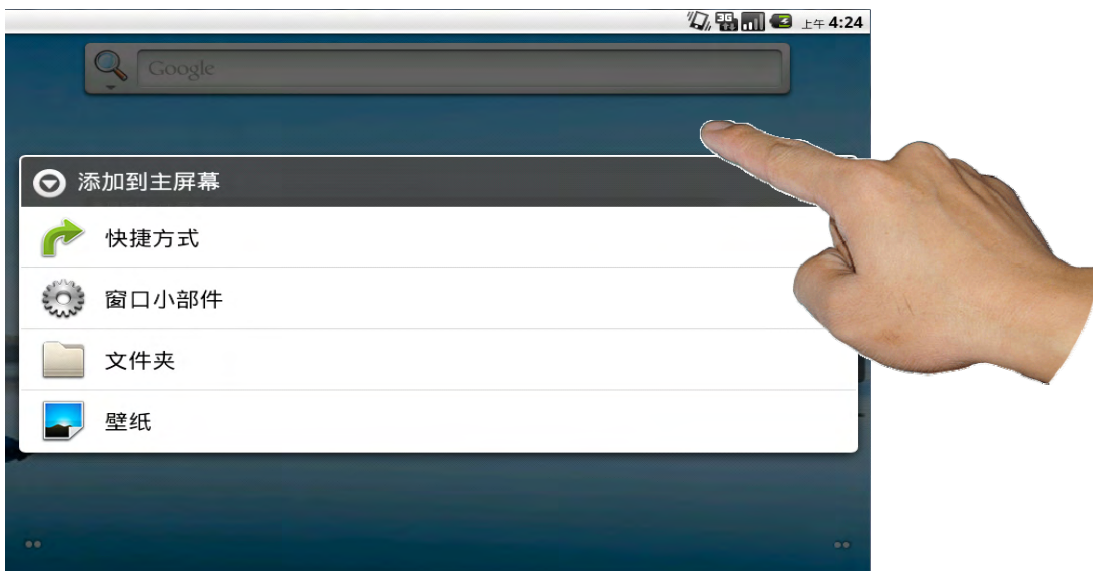
3.6.1 Click operation

Click lightly the icon you want to.



3.6.2 Long-press operation

Press a little long the pattern you want to operate till a menu pops up.



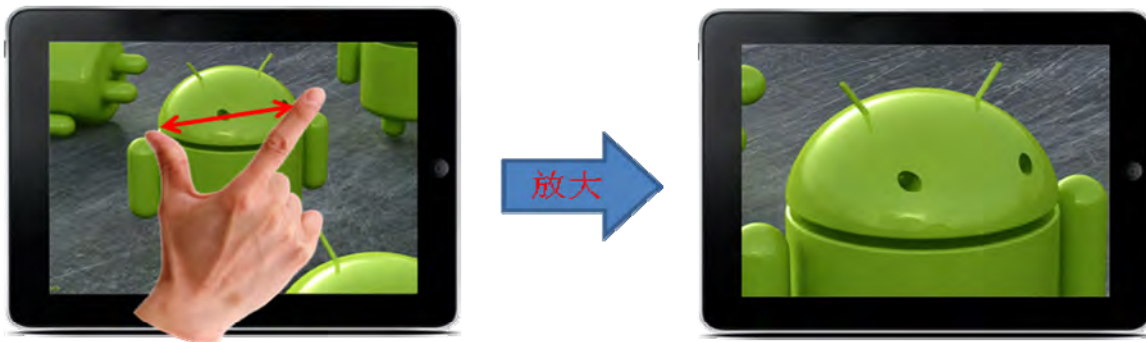
3.6.3 Slide operation

Touch the screen gently with one of your fingertip and slide it to the direction you want, then the pattern on the screen will move with your direction as you wish.



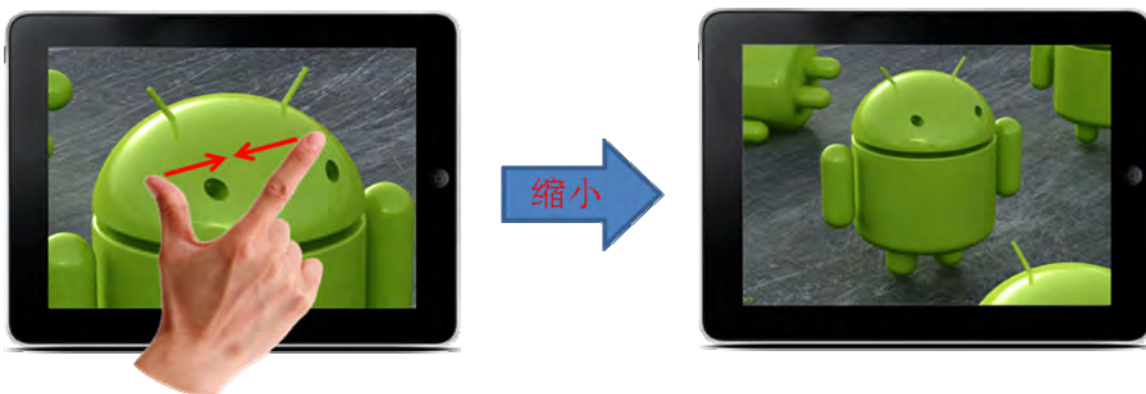
3.6.4 Magnify operation

Touch the screen gently with two of your fingertips and move them away from each other, then the pattern on the screen can be magnified.



3.6.5 Shrink operation

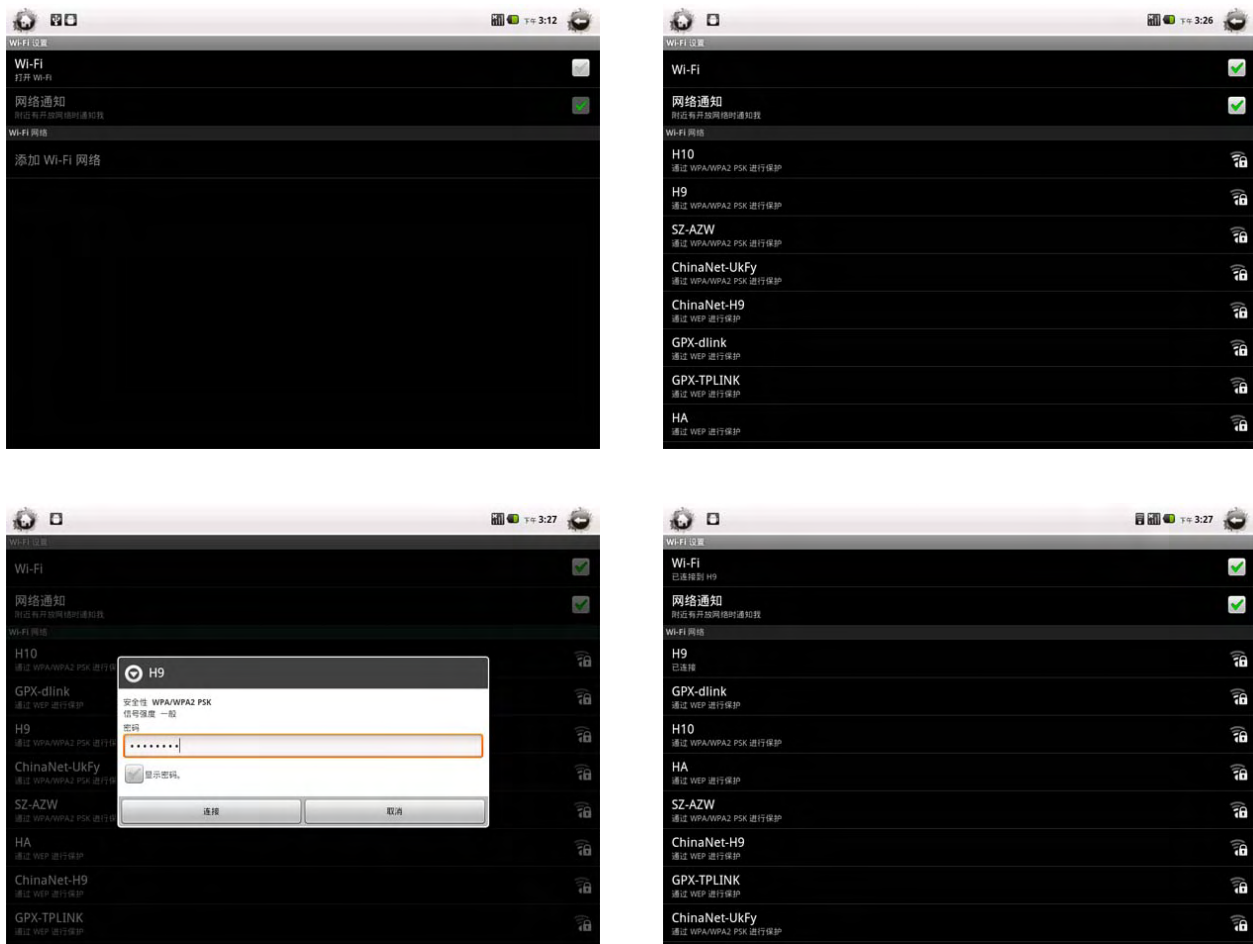
Touch the screen gently with two of your fingertips and close them to each other, then the pattern on the screen can be shrunk.



3.7 Connecting to the Internet

Your computer supports to use wireless network.

Click “Setting”→”Wirless and Network”→”WIFI Setting”, and tick ”WIFI” and ”Network Notification”. Now all the wireless networks which can be searched will appear on the screen. Choose the one you want to access and enter your password.



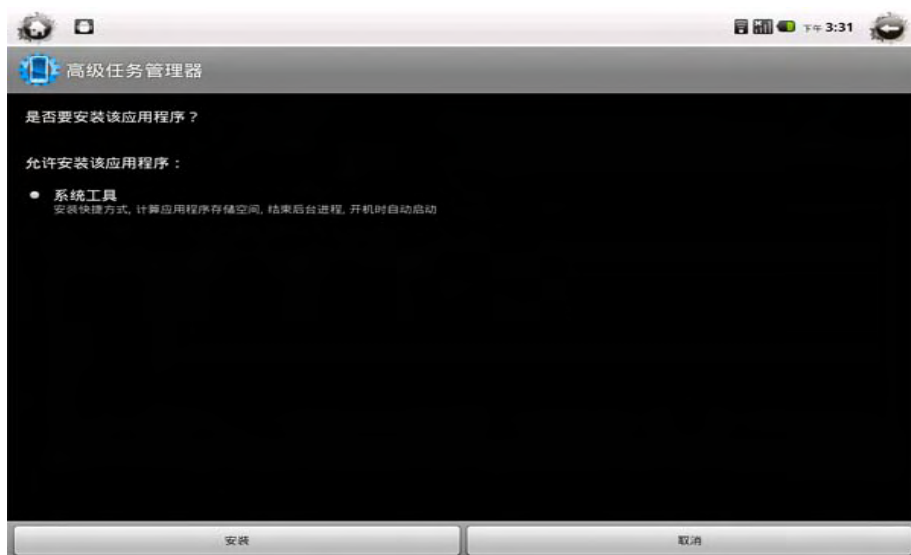
4. Installation of Software and Upgrade of Operating System

4.1 Installation of software

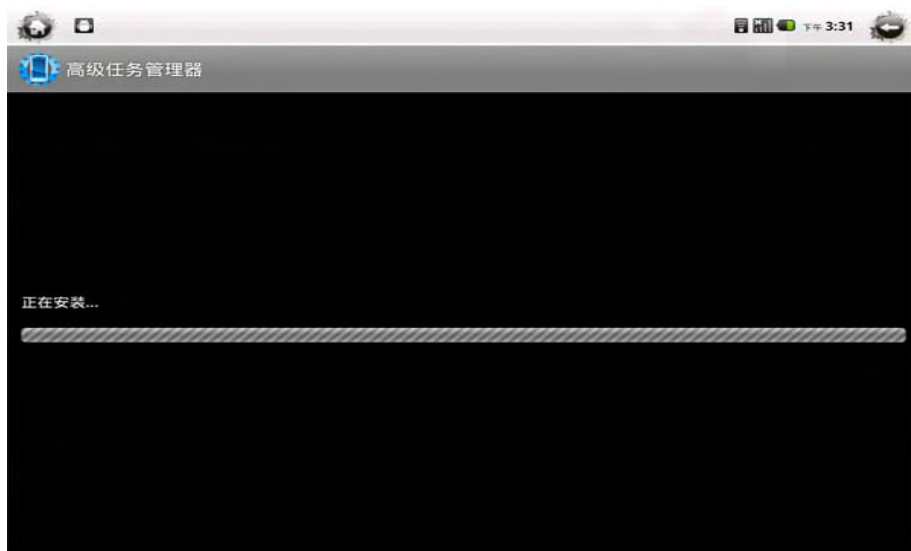
The extension of the software Android system supports is “*.apk”.

4.1.1 Local installation / Installation from expansion cards

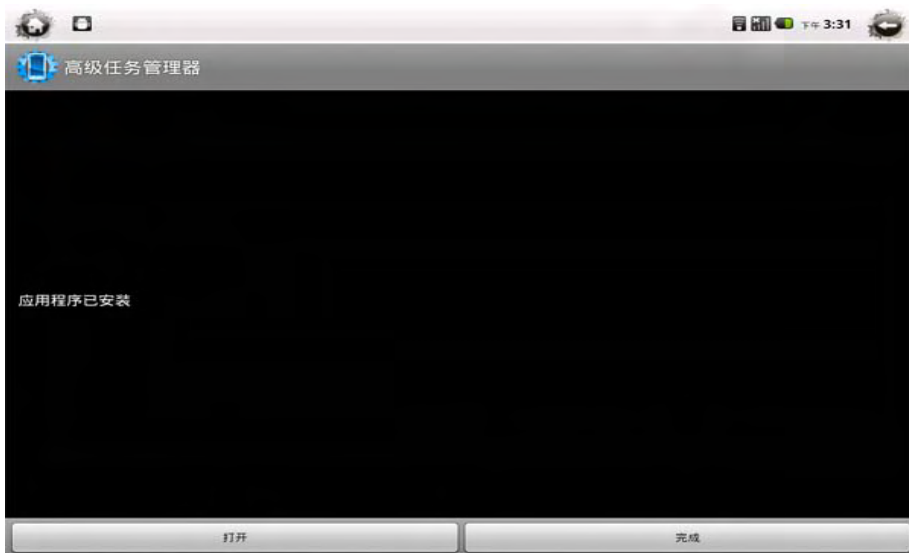
Find the software needed from a system disk or an expansion card by file browser, click the icon of relevant software, then “Install the software?” will pop up on the screen. Choose “Install”.



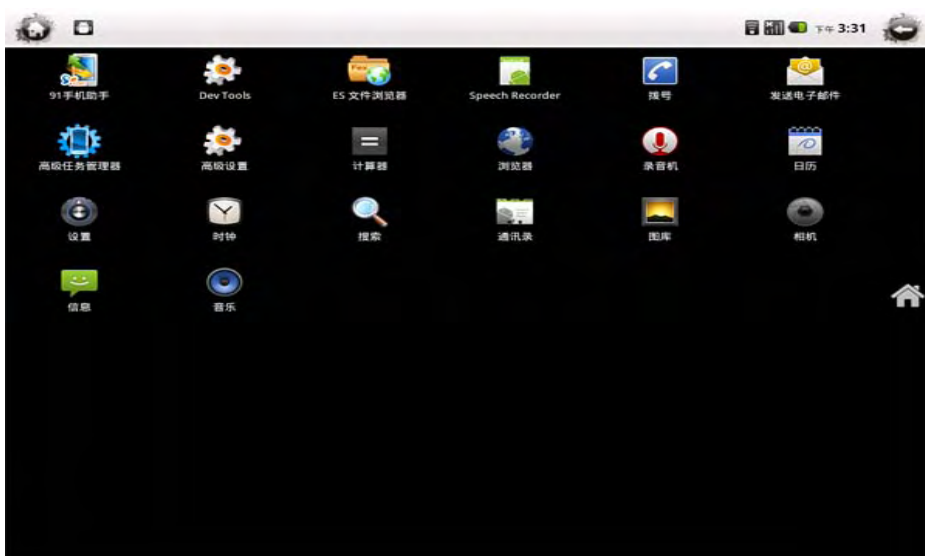
Progress bar of installation “Being installed” appears on the screen.



Click “Open” or “Finish” after the reminding words appear “Software has been installed”.



The software installed can be found in the main menu of the set-up procedure.



4.1.2 Installation from PC

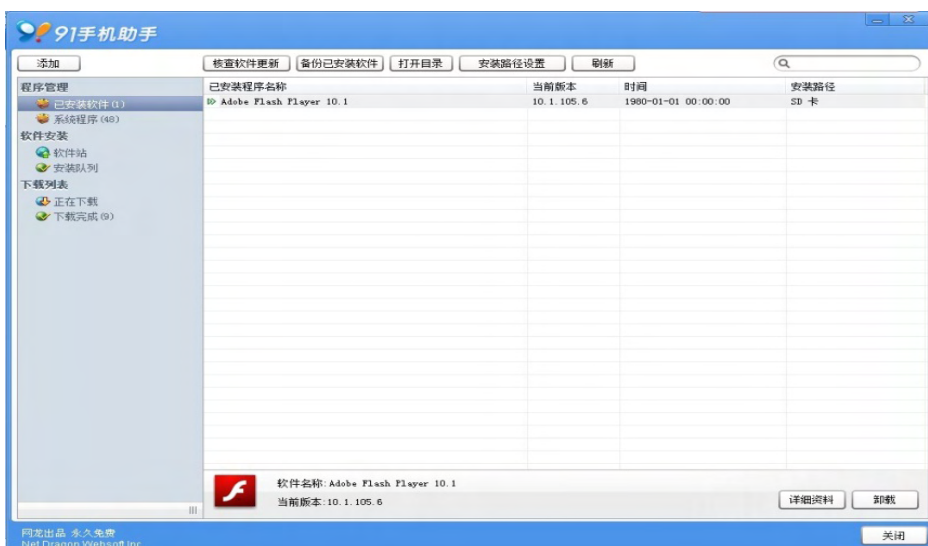
Open the software of “91 Assistant”, connect your computer to PC with USB cable.



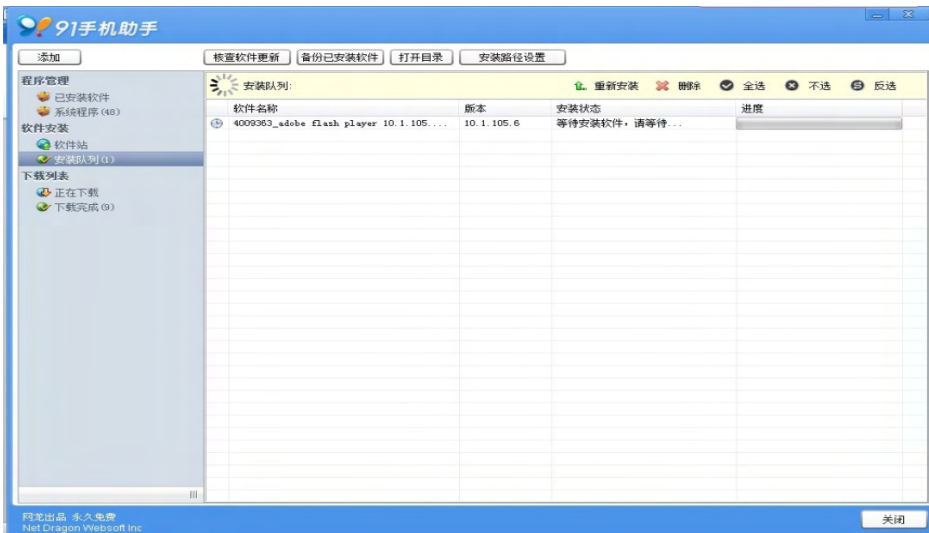
Click “Program Management” on the interface, and find the software needed through software stations.



Softwares already installed can be viewed by clicking “Software Installed”.



Click “Add” icon, find documents with the extension of “*.apk” from PC, then your can install the software needed.



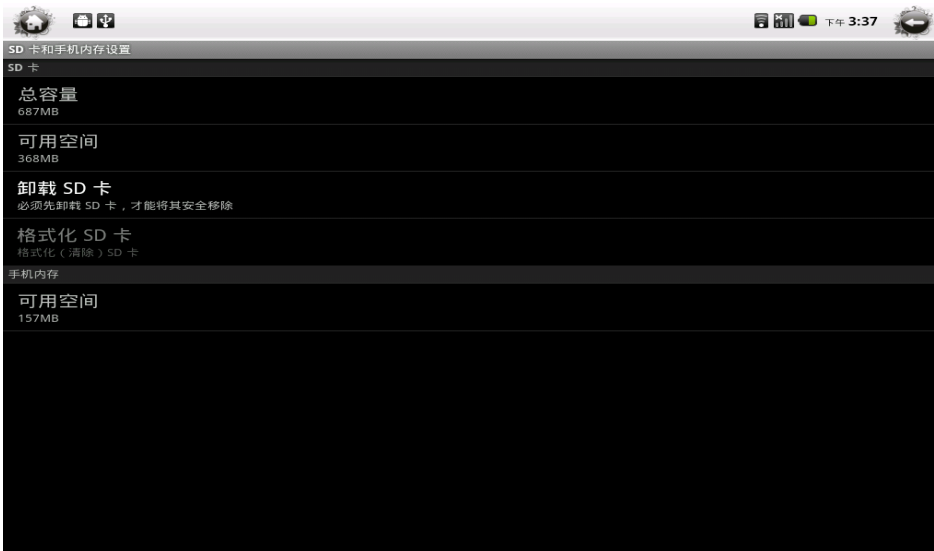
4.1.3 Installation site of software

The acquiescent installation site is The Local whether you install locally or from expansion cards.

You can choose the software needed by clicking “Setting” →”Application Program” →”Manage Applications”. Now an interface with application information will pop up, click “Move to SD card” to move the software needed to SD card.



Note: Before taking out the expansion card, please be sure to click “Uninstall SD card” through choosing “Setting” →”SD card and Device Memory”.



4.2 Upgrad of Operating System

Your computer allows the system to be upgraded.

4.2.1 Upgrading from TF cards

Get a TF card which can support to upgrade the system, shut down your computer and put this TF card into TF card slot, press power button and Volume + / Back button simultaneously for 3 seconds, (Your computer is operating and the system is upgrading at the same time. After upgrading, your computer will shut down automatically.), take out the TF card and turn on your computer. Right now, you are using an upgraded system.

NOTE: ask your supplier to offer you a TF card which can support to upgrade the system.

FCC STATEMENT

1. This device complies with Part 15 of the FCC Rules. Operation is subject to the following two conditions:
 - (1) This device may not cause harmful interference.
 - (2) This device must accept any interference received, including interference that may cause undesired operation.
2. Changes or modifications not expressly approved by the party responsible for compliance could void the user's authority to operate the equipment.

NOTE: This equipment has been tested and found to comply with the limits for a Class B digital device, pursuant to Part 15 of the FCC Rules. These limits are designed to provide reasonable protection against harmful interference in a residential installation.

This equipment generates uses and can radiate radio frequency energy and, if not installed and used in accordance with the instructions, may cause harmful interference to radio communications. However, there is no guarantee that interference will not occur in a particular installation. If this equipment does cause harmful interference to radio or television reception, which can be determined by turning the equipment off and on, the user is encouraged to try to correct the interference by one or more of the following measures:

- Reorient or relocate the receiving antenna.

- Increase the separation between the equipment and receiver.

- Connect the equipment into an outlet on a circuit different from that to which the receiver is connected.

- Consult the dealer or an experienced radio/TV technician for help.

RF warning statement:

The device has been evaluated to meet general RF exposure requirement. The device can be used in portable exposure condition without restriction.