

LightScape^{MC/TM}

Waterproof floating Cordless LED lamp

PLEASE READ THE INSTRUCTIONS BEFORE USE

This pack includes:

Two polyethylene light diffuser + Two rechargeable LED Lights
One **charger base**
One external AC adapter
One RF REMOTE CONTROLLER
Operating instructions

For you to make the most of your new lamp, please carefully read and observe these operating instructions.

Description

This rechargeable waterproof and cordless polyethylene lamp, was designed for both indoor and outdoor use (patio, balcony, garden...) or swimming pool. It floats, resists to light impacts ,UV and to the chlorinated water of swimming pools.

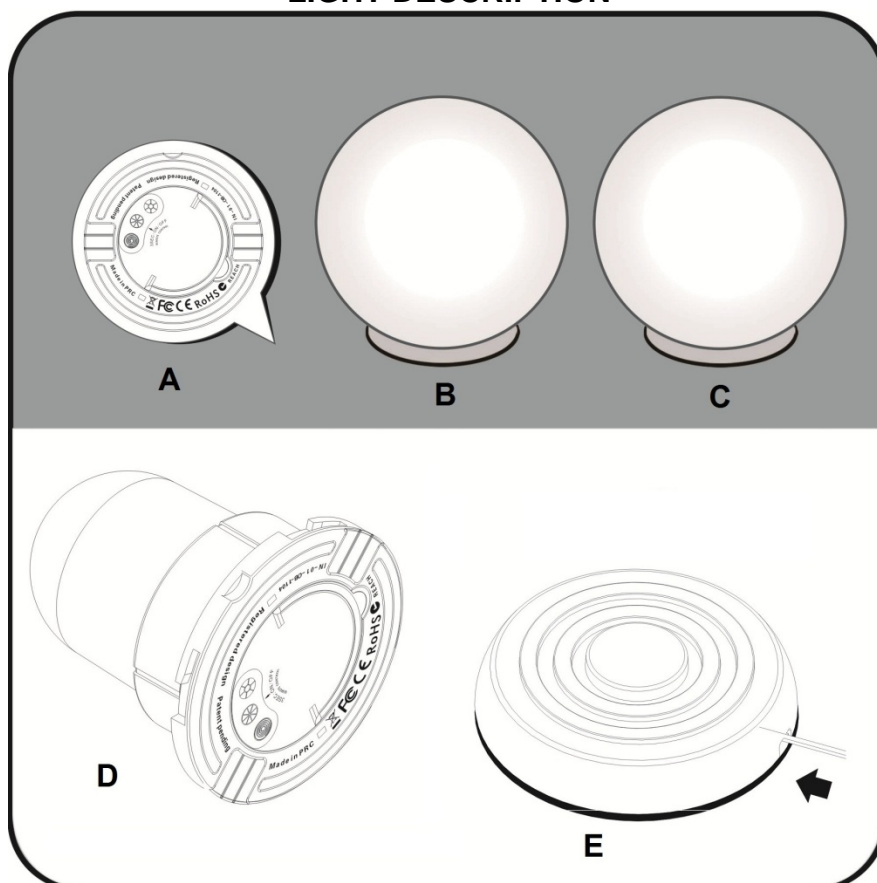
The induction charger allows the lion polymer battery to be safely recharged if you strictly follow the safety guidelines.

Technical specifications

- Module with 5 color RGB LED
- Waterproof LED module and Lamp
- Induction Charger : Input AC 100V-240V – Output DC 12V 500 mA
- Battery: lion polymer 800 mAh
- Polyethylene plastic, UV and chlorine resistant diffuser.
- 4.33-Ghz-radio-frequency remote controller powered with a 23A - MN21 alkaline battery

Standards and certifications: CE – ROHS – C'Tick – FCC - PSE – IC – MIC

LIGHT DESCRIPTION



A : lighting access buttons

B : ball shade 1 (polyethylene material)

C : ball shade 2 (polyethylene material)

D : LED lighting module

E : induction charging base

RF REMOTE CONTROLLER DESCRIPTION



K1 : Color Change + Color Memory

K2 : Fixed Color + Candle Effect

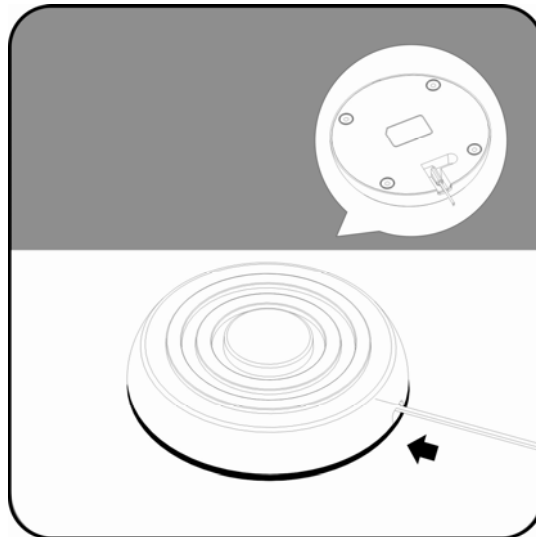
K3 : Light Intensity adjustment

Induction charging the lamp

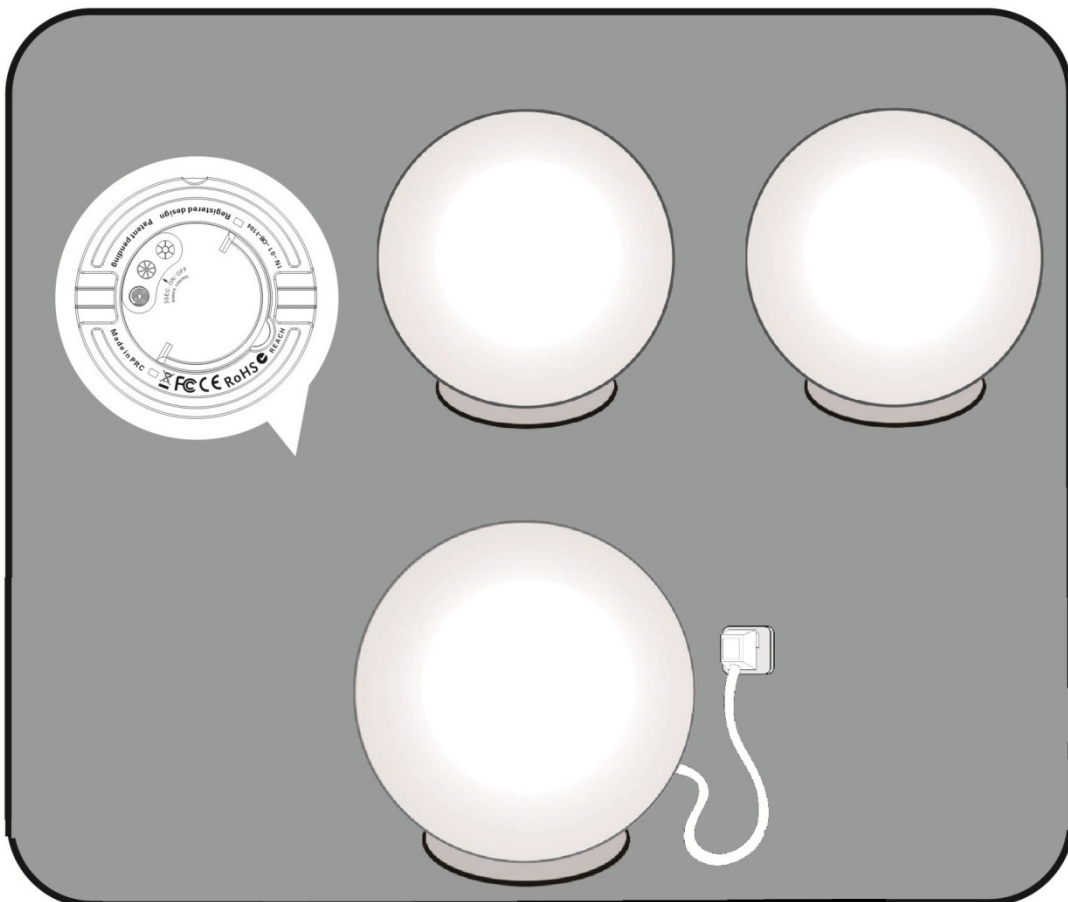
First use: fully charge the battery for at least 5 hours

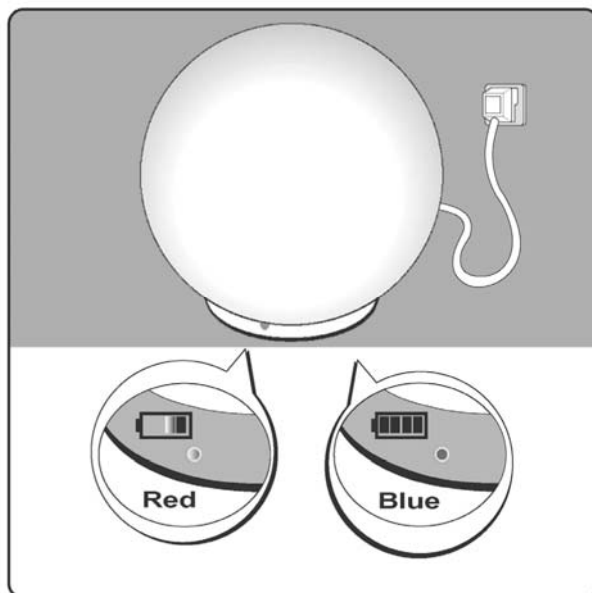
Connect the external AC adapter to an electrical outlet then connect the other end under the charger station.

The power indicator (blue diode) lights up.



Put your lamp gently over the induction charging station by taking care at first to verify that its base is perfectly clean and dry.





The red charge indicator appears then: charging begins.

The charge indicator will light up in blue when the battery is fully charged

Red indicator: charging Blue indicator: battery fully charged

When your battery is fully charged the charger will automatically cut off (note that the LED will remain blue).

It is strongly recommended to disconnect the AC adapter once the charge is completed.

When not charging, you can also use your lamp on its stand, as the charger powers the LED module while charging the battery. The charging time will then be longer than when the lamp is off.

It should be noted that to charge and use your lamp in a simultaneous manner may alter the life duration of your battery.

Charger's safety guidelines

It is essential, before any charge, to clean, if required, the base of your lamp.

Flush the lamp and its base with clear water after every use in swimming pool, then with a soft and dry cloth, dry it thoroughly before charging.

For your safety, the induction charger has an automatic feature to reduce the charge, which lowers the electric power fed to the battery when it is charged, at 85 % thus preventing any damage.

When not using your lamp on its charger base, it is highly recommended to disconnect the external AC adapter from the electrical plug.

The charger should not be used outdoors, and never be exposed to rain, humidity or other liquids.

Refrain from using the **charger near a heat source and keep it out of children's reach.**

This charger is specifically designed to operate with the lamp supplied in the pack, and it should not, under any circumstances, be used to charge any other product.

When charging, the Ac adapter and the battery and the charger 's base may heat slightly. This is normal. Let the LED module cool down before use.

Do not touch the charger's base or the charger when charging. Do not connect the lamp's base to any other device. Do not try to charge the lamp with any other charger than the one supplied in the pack.

Do not attempt to open the charger, or the AC adapter; for any problem, return it to your retailer.

Performance:

Indicative charging time: 3h30 hours.

Battery's autonomy (for information):

RGB colors (multicolor) 8-20 hours

Candle effect:) :9-18 hours

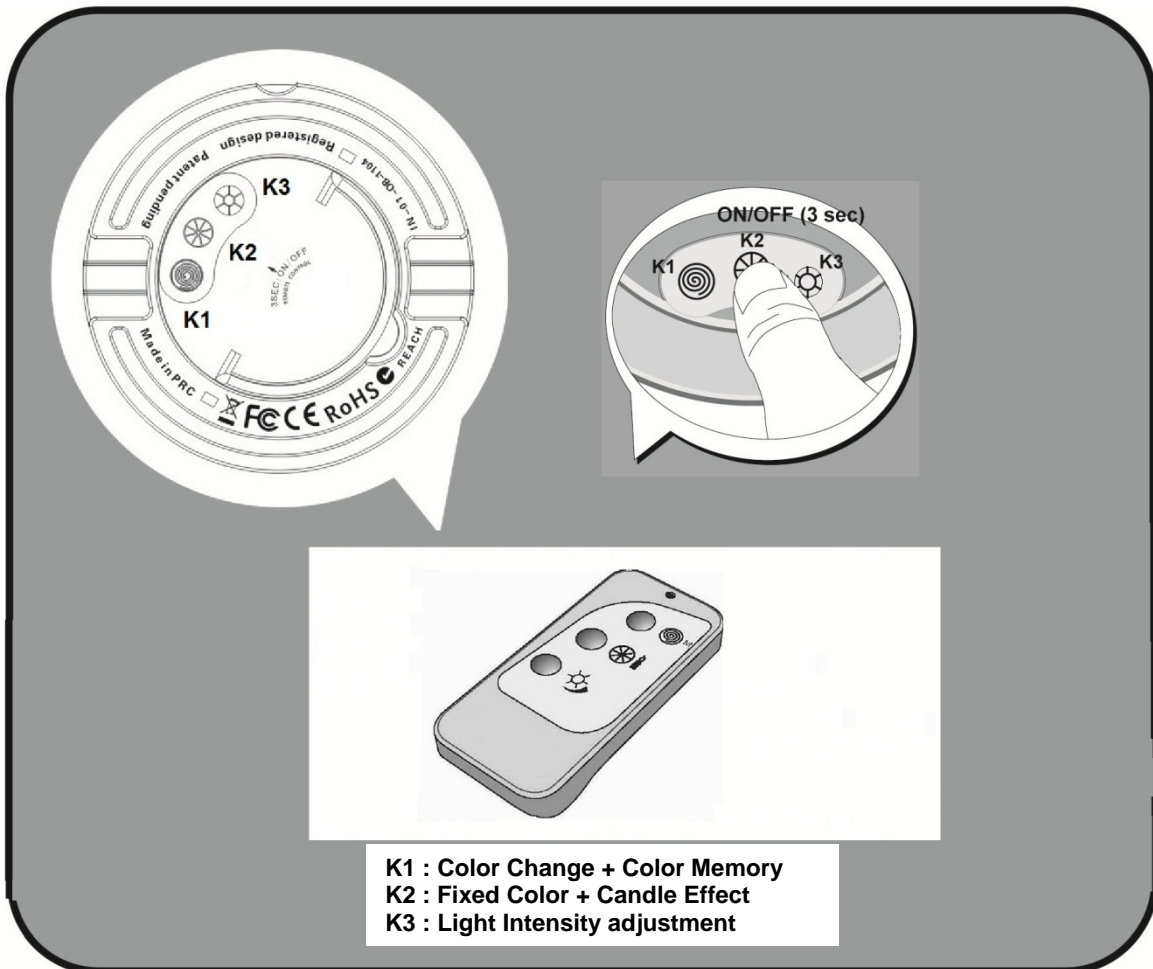
Designated temperature for product use: 14-35 degrees. Below 14°C, the battery's autonomy will be significantly reduced.

Update feature - Reset / Low battery:

When the battery has less than 20% of its charge, the lamp might not turn on.
Just place your lamp on the charger's base connected to an electrical outlet, then try again.

Turning the lamp on and its operation

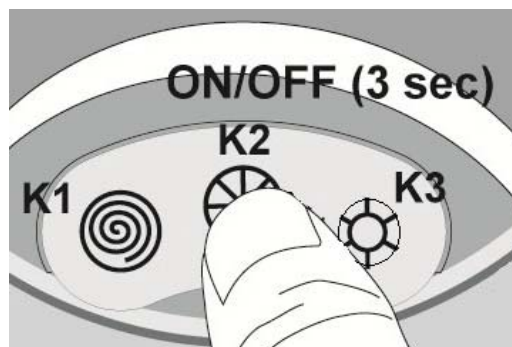
The 3 buttons located under your lamp (LED module) or on your remote controller allow you to access all features and settings.



Use with a wireless remote controller Please insert the battery supplied by observing the polarities (+ / -).

Make sure you change the battery (12V, type: 23A - MN21 battery) when required.

IMPORTANT : underneath LED module button K2 : ON/OFF remote controller access



You can switch ON and OFF the remote controller receiver inside the Led module pressing 3 seconds the button K2 underneath the LED module.

First use: press the K2 button, 3 seconds to switch ON and activate the remote controller access . Press again 3 second to disable the RF receiver.

Features / Color intensity options

“K1” button: Scrolling colours and memorising a colour

1st tap: Progressive colour scrolling

2nd tap: Displays your favourite colour previously memorized

Memorizing your favourite colour: By pressing the K1 button for 2 seconds when scrolling colours, your chosen tint will be memorized. This unique colour will remain memorized until you decide to replace it with another one

3rd tap: Turns your lamp off.

“K2” button: Fixed colours and candle effect

1st tap: white colour

2nd to 9th tap Choice of fixed colours (among one of 8 colours).

10th tap: candle effect

11th tap: Turns your lamp off

The K2 button allow as well to activate or disable the remote controller access (RF receiver disabled)

“K3” button: Setting the light intensity

Successively press the “K3” button to decrease the light intensity of your lamp

After pressing the button for the 4th time, you will get back to the maximum light intensity

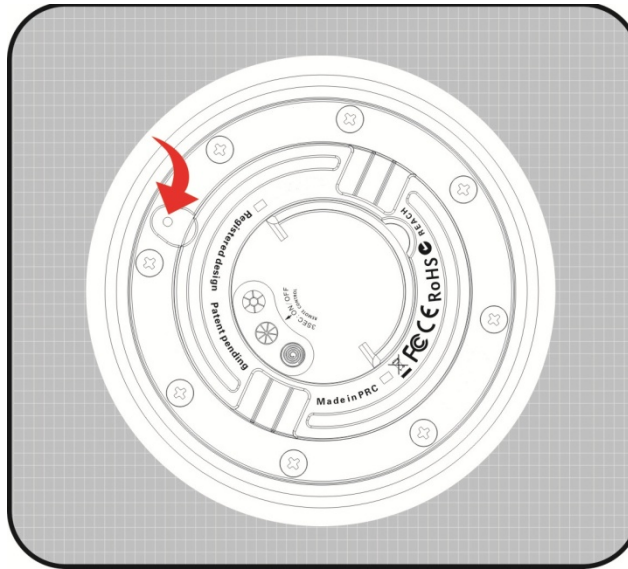
Note: You can switch from one feature to another without turning the lamp off.

MAINTENANCE & DISASSEMBLY OF THE LED MODULE

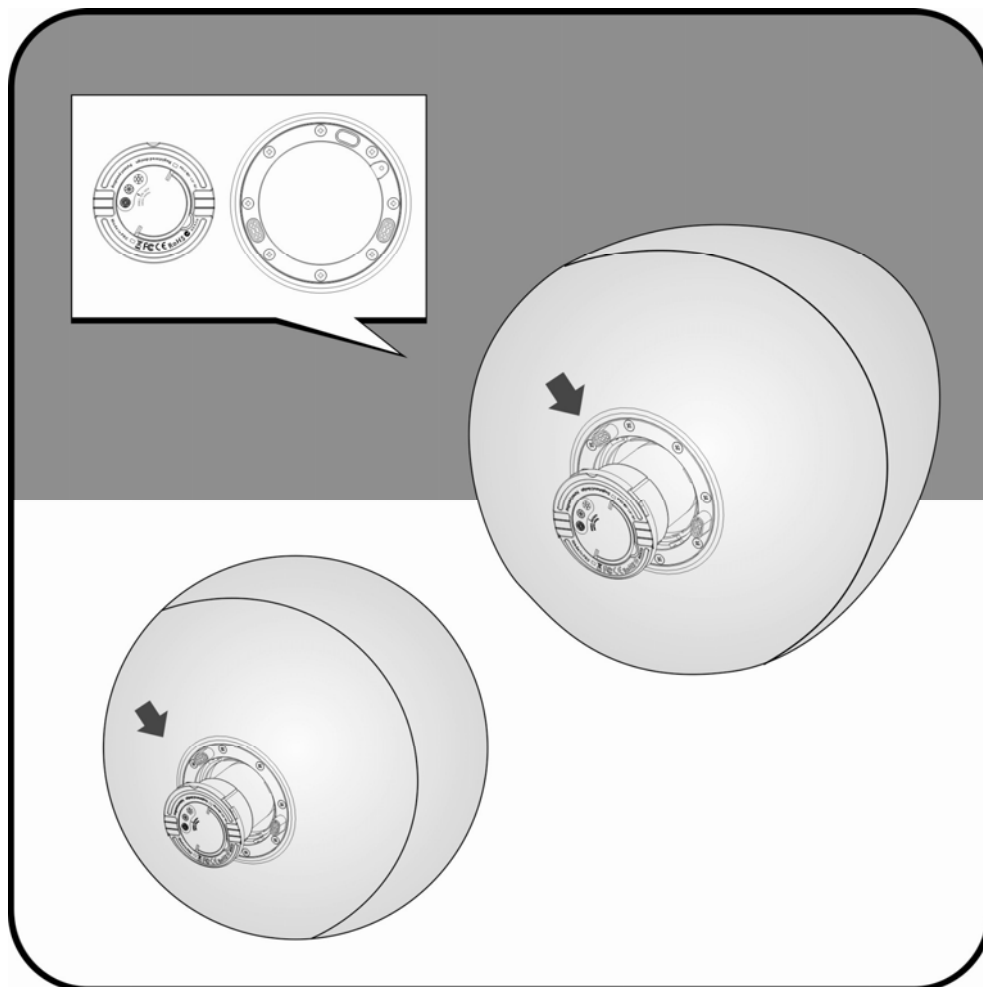
After an intensive outdoor and pool use, you might need to remove humidity or water from the polyethylene plastic ball

Process to the next step if only really necessary:

Step 1: remove the small screw and the plastic lock from the ring (see below)



Step 2: slowly twist the LED module from left to right (clockwise to unlock the led module). You can use the small metal hook underneath the led module to help you.

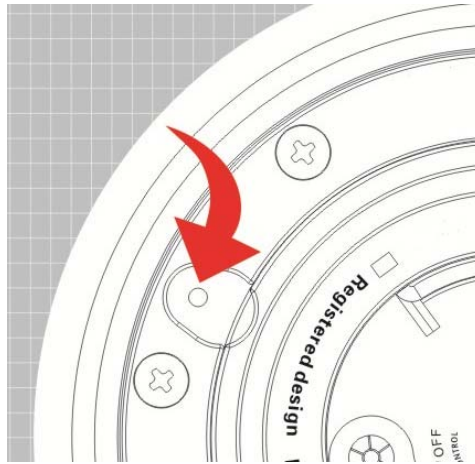


Once removed the LED module, do not try to open it : This will void the warranty

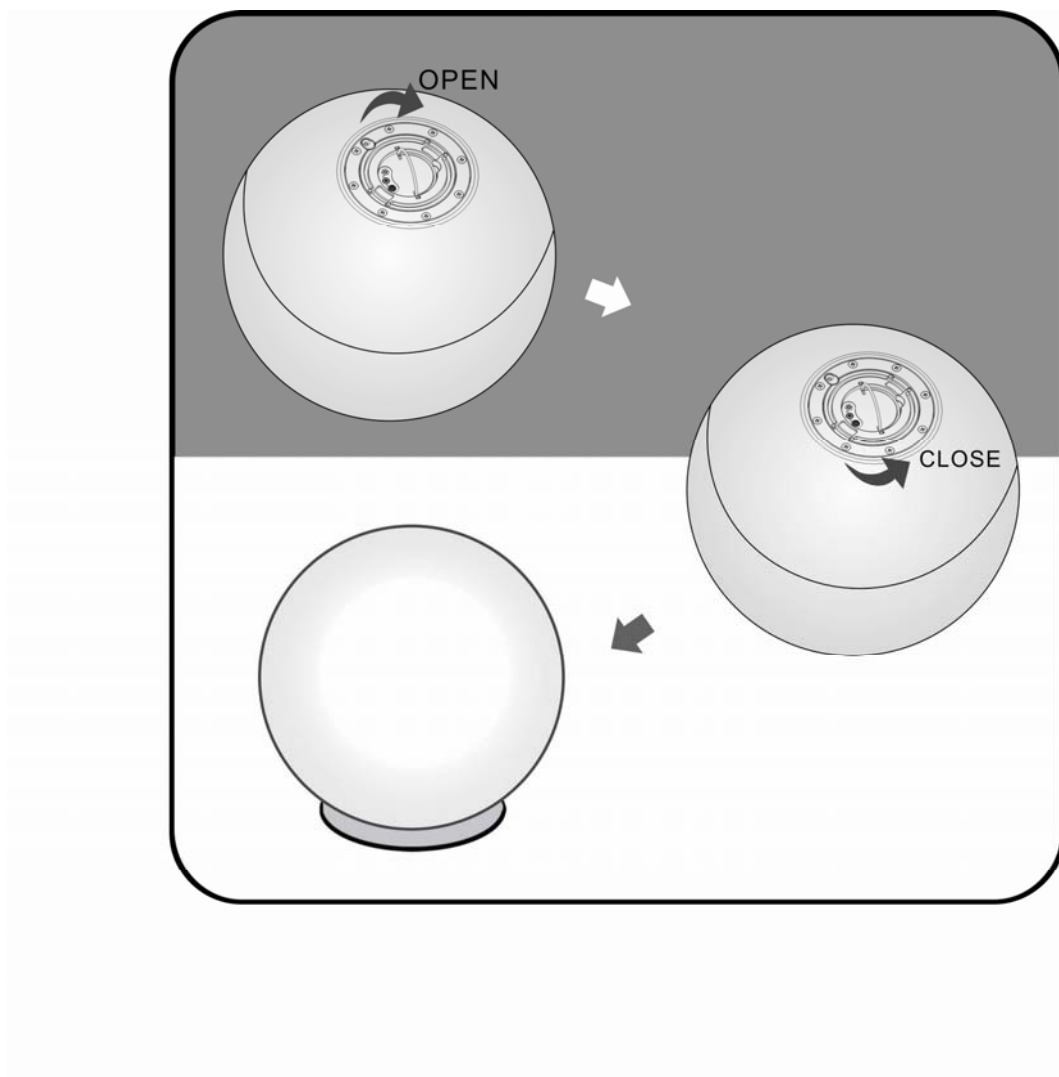
Remove the water and dry carefully the ball and the led module

Replace the module LED and this time anticlockwise to lock it

Screw the little lock plastic part (see below)



Remove the LED module from the ball only if it is strictly necessary, Doing so may damage the waterproof quality of the light.



Lamp's safety guidelines

After every use in swimming pool please wash and rinse the product with clear water and dry.

Never expose the lamp, the lighting module and its battery to fire, or any other strong heat source: Severe risk for your safety.

Do not try to dismount or open the DEL module or the charger. **Doing so may cause electrical hazard** and sealing loss; your warranty would be automatically cancelled.

Be careful when handling the product: although it is solid, mishandling it would damage it, cause scratches on the diffuser or indelible markings.

Avoid extended periods outdoors, in the cold (below 14°C), or in the sun: Avoiding this condition will keep your battery's life at optimal performance.

Product to be used as per the operating instructions, otherwise void of warranty may apply.

FCC Statement

This equipment has been tested and found to comply with the limits for a Class B digital device, pursuant to part 15 of the FCC rules. These limits are designed to provide reasonable protection against harmful interference in a residential installation. This equipment generates, uses and can radiate radio frequency energy and, if not installed and used in accordance with the instructions, may cause harmful interference to radio communications. However, there is no guarantee that interference will not occur in a particular installation. If this equipment does cause harmful interference to radio or television reception, which can be determined by turning the equipment off and on, the user is encouraged to try to correct the interference by one or more of the following measures:

- Reorient or relocate the receiving antenna.

- Increase the separation between the equipment and receiver.

- Connect the equipment into an outlet on a circuit different from that to which the receiver is connected.

- Consult the dealer or an experienced radio/TV technician for help.

To assure continued compliance, any changes or modifications not expressly approved by the party responsible for compliance could void the user's authority to operate this equipment. (Example- use only shielded interface cables when connecting to computer or peripheral devices).

This equipment complies with Part 15 of the FCC Rules. Operation is subject to the following two conditions:

(1) This device may not cause harmful interference, and

(2) This device must accept any interference received, including interference that may cause undesired operation.

Caution!

The manufacturer is not responsible for any radio or TV interference caused by unauthorized modifications to this equipment. Such modifications could void the user authority to operate the equipment.

Patented shape and model. All rights reserved.

Patent pending.

Made in China