

Trouble Shooting

(A) Unable to connect

- 1. Make sure the keyboard is within its effective working range---10M.
- 2. Make sure that the Bluetooth is still paired. If not, re-pair the units.
- 3. If the Bluetooth is connected to any other Bluetooth products, please cancel and turn off the keyboard and re-pair.
- 4. Please kindly check the batteries. If they are low on power,recharge the unit.

Federal Communication Commission Interference Statement

This equipment has been tested and found to comply with the limits for a Class B digital device. These limits are designed to provide reasonable protection against harmful interference in a residential installation. This equipment generates uses and can radiate radio frequency energy, and if not installed and used in accordance with the instructions, may cause harmful interference to radio or television reception, which can be determined by turning the equipment off and on, the user is encouraged to try to correct the interference by one of the following measures:

- Reorient or relocate the receiving antenna
- Increase the separation between the equipment and receiver.
- Connect the equipment into an outlet on a circuit different from that to which the receiver is connected
- Consult the dealer or an experienced radio/TV technician for help.

This device complies with Part 15 of the FCC Rules.Operation is subject to the following two conditions :

- (1)This device may not cause harmful interference.
- (2)This device must accept any interference received, including interference that may cause undesired operation.



Bluetooth Keyboard Case

Packing Contents:

- 1.PU leather case with keyboard
- 2.USB Charging Cable
- 3.Instruction manual

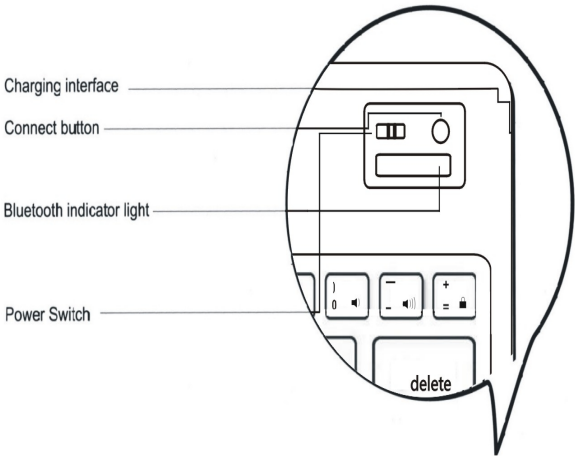


Product Features:

- 1. Bluetooth 3.0 interface with AIROHAAB1108 as main control chip.
- 2. WIDCOMM BTW Bluetooth technology which is officially approved by Microsoft.
- 3. Stylish protective PU leather case designed for iPad2 with display stand for easy viewing.
- 4. Light weight, quiet keystroke, dust proof and spill-proof.
- 5. Working temperature: -20℃~55℃ humidity:20%-50%.
- 6. Energy saving keyboard with sleep mode.

Specifications

- 1.Executive standard: Bluetooth V3.0
- 2.Working distance: 10 meters
- 3.Modulation system: FHSS 2.4G
- 4.Transmitting power: Class 2
- 5.Operating voltage:3.0-5.0
- 6.Working current: <4.0MA
- 7.Standby current: <1MA
- 8.Sleeping current:<200UA
- 9.Charging current: ≥ 100MA
- 10.Standby time: 60days
- 11.Uninterrupted working time: 30 hours
- 12.Charging time: 4-4.5 hours
- 13.Lithium polymer battery Capacity: 330MAH
- 14.Lithium polymer battery life: 3 years
- 15.Lithium polymer battery Specifications: 40*16*50MM
- 16.Key strength:80±10g
- 17.Key life:5 million
- 18.Operating temperature: -20℃~+55℃
- 19.Storage temperature: -40℃~+70℃
- 20.Humidity:20% - 50%

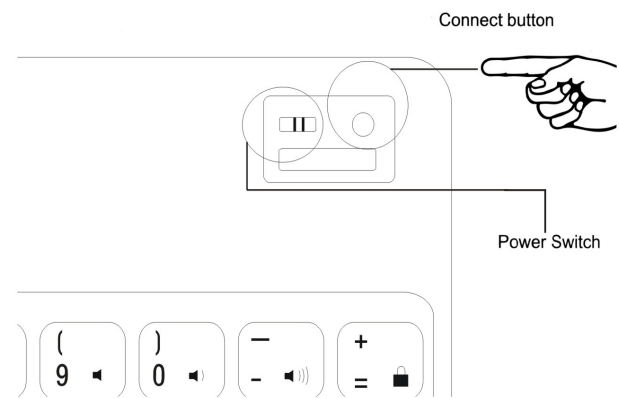


Bluetooth Keyboard

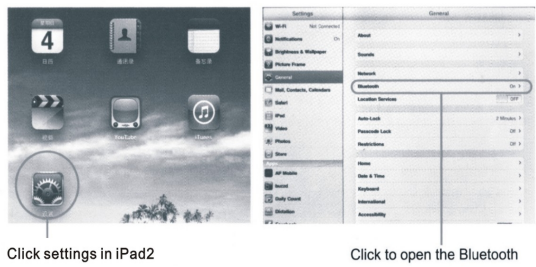
Bluetooth Keyboard Pairing

Step 1: Turn on the power switch. The Bluetooth blue light will be on for 3 seconds, then it will go off.

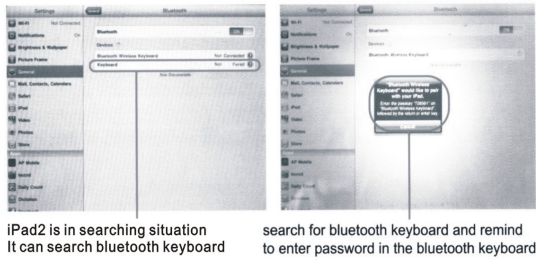
Step 2: Press the connect button, the Bluetooth blue light will start blinking. The keyboard is now ready to be connected to iPad mini.



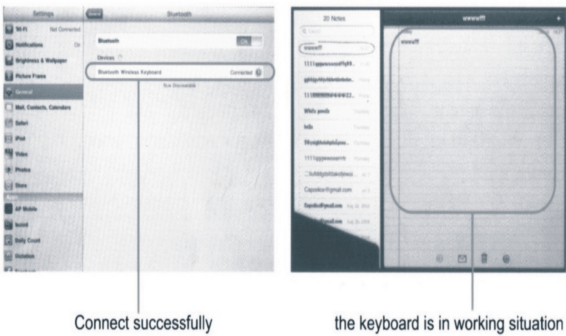
Step 3: Turn on and unlock iPad mini. In menu mode, press Settings--- General--- Bluetooth---Devices. Bluetooth keyboard found. Click on the device to pair with it.



Step 4: Enter the password code displayed on screen, then press enter key.



Step 5: Wireless Bluetooth keyboard connected successfully.



Charging

If the Bluetooth indicator light keeps flashing while you are working, the battery power is low and the device needs to be recharged.

- Step 1: Connect the USB power cable to the keyboard charging interface.
- Step 2: Connect the USB cable to the computer's USB interface or USB power adapter.
- Step 3: The Charge red indicator light will stay on when the keyboard is charging. Once charged, the red indicator light will turn off.

Notes:

- 1. After you have finished charging, carefully unplug the USB cable without damaging the USB interface.
- 2. Remember to turn off the keyboard's power to extend battery life after you have finished using your keyboard.
- 3. Never store the keyboard away for a long period of time if the battery is not charged as this will shorten the keyboard's internal lithium battery life. Rather fully charge the battery before storing the unit away.
- 4. Don't fold the cover of the keyboard while still in use.

Safety Cautions

- 1. Keep away from sharp objects.
- 2. Do not put any object on keyboard.
- 3. Do not microwave the item.
- 4. Do not twist or distort the keyboard.
- 5. Keep away from oils, chemicals or any other organic liquids.
- 6. Clean the silicone keyboard with water, alcohol, or alcohol based disinfectants.

Special application:

The Bluetooth keyboard can be connected to iPad, iPhone 3G, 3GS, 4G, 4GS and iPod Touch, but the system will have to update to iOS 4.0 or later. For other Bluetooth enabled devices, please verify the Bluetooth standard and compatibility before attempting to connect to the keyboard.

FCC Certification Requirements

Caution: Any changes or modifications in construction of this device which are not expressly approved by the party responsible for compliance could void the user's authority to operate the equipment.

This device complies with part 15 of the FCC Rules. Operation is subject to the following two conditions: (1) This device may not cause harmful interference, and

(2) This device must accept any interference received, including interference that may cause undesired operation.

The manufacturer is not responsible for any radio or TV interference caused by unauthorized modifications to this equipment. Such modifications could void the user's authority to operate the equipment.

This equipment has been tested and found to comply with the limits for a Class B digital device, pursuant to Part 15 of the FCC Rules. These limits are designed to provide reasonable protection against harmful interference in a residential installation. This equipment generates, uses and can radiate radio frequency energy and, if not installed and used in accordance with the instructions, may cause harmful interference to radio communications. However, there is no guarantee that interference will not occur in a particular installation. If this equipment does cause harmful interference to radio or television reception, which can be determined by turning the equipment off and on, the user is encouraged to try to correct the interference by one or more of the following measures:

- Reorient or relocate the receiving antenna.
- Increase the separation between the equipment and receiver.
- Connect the equipment into an outlet on a circuit different from that to which the receiver is connected.
- Consult the dealer or an experienced radio/TV technician for help.